

**SITE PLAN BLOCK A**

- TOP OF SLOPE SHOWN ON GRADING PLANS  
BID ITEM - SEE SPECIFICATIONS (DEDUCTIVE)
- PROJECT BOUNDARY
- 4'-0" HIGH CHAIN LINK FENCE UNLESS OTHERWISE NOTED - BID ITEM (DEDUCTIVE)
- 5'-0" HIGH WOOD FENCE - BID ITEM - SEE SPECIFICATIONS (DEDUCTIVE)  
SEE DETAILS SHEET #10.

GRAPHIC SCALE  
1 INCH = 40 FEET  
0 10 20 30 40 50 60

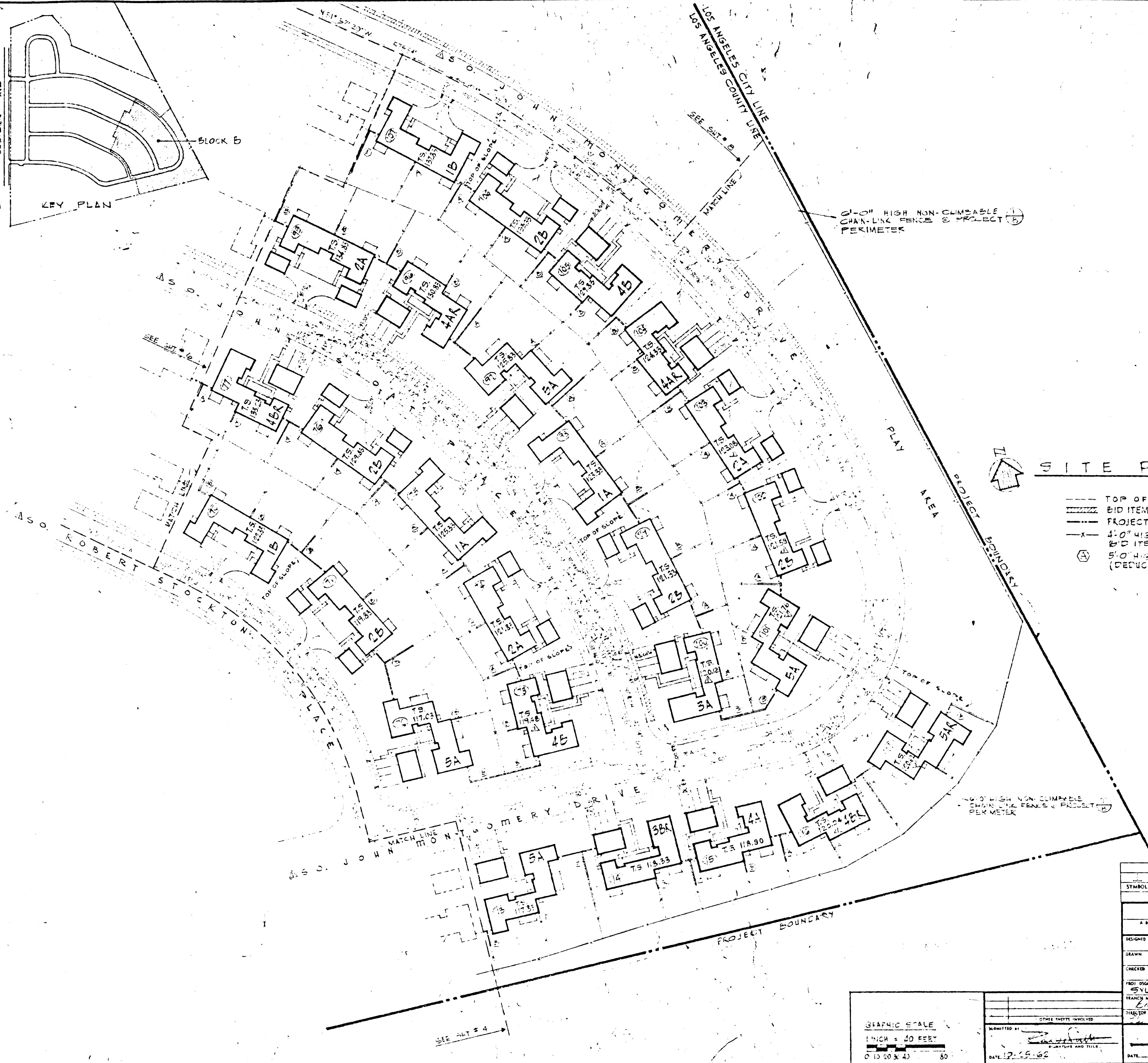
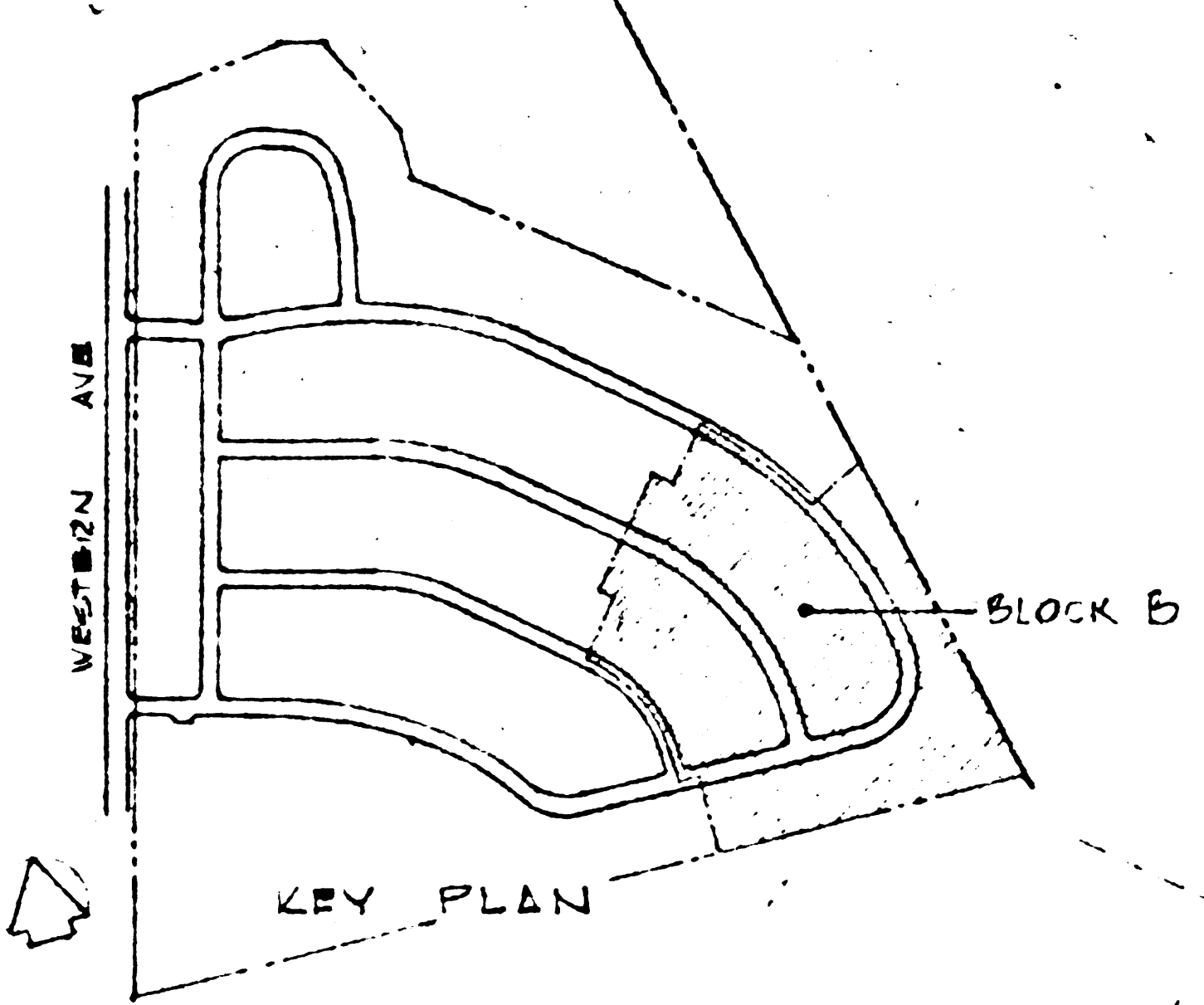
REVISIONS		DATE	APPROVAL

DESIGNED <b>SM</b>	U.S. NAVAL STATION LONG BEACH, CALIFORNIA
DRAWN <b>ELO</b>	<b>FAMILY HOUSING PROJECT FY-1963</b>
CHECKED <b>CEK</b>	
PROJECT ENGINEER <b>SYLVESTER</b>	<b>SAN PEDRO</b>
DATE <b>10/25/62</b>	<b>SITE PLAN - FENCE PLAN BLOCK A</b>
APPROVED <i>[Signature]</i>	DATE <b>10/25/62</b>
PROJECT NO. <b>121586-1</b>	SHEET <b>4</b> OF <b>92</b>
DATE <b>10/25/62</b>	BY <b>991246</b>

**F.M. 121586-1**





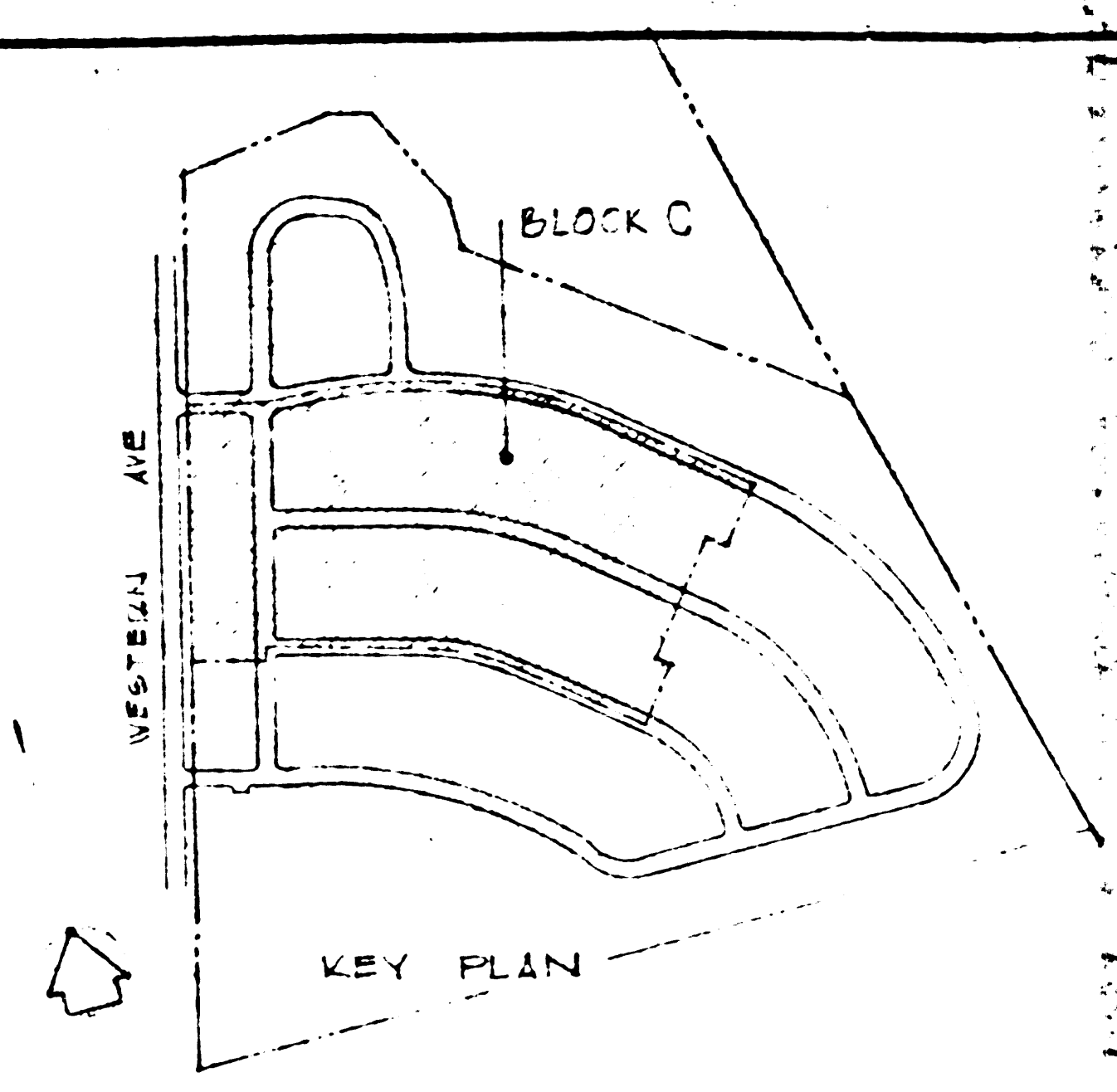
SITE PLAN - BLOCK B

- TOP OF SLOPES SHOWN ON GRADING PLANS
- BID ITEM - SEE SPECIFICATIONS (DEDUCTIVE)
- PROJECT BOUNDARY
- x- 4'-0" HIGH CHAIN LINK FENCE UNLESS OTHERWISE NOTED - BID ITEM (DEDUCTIVE)
- (A) 5'-0" HIGH WOOD FENCE - BID ITEM - SEE SPECIFICATIONS (DEDUCTIVE) - SEE DETAILS SHEET # 10.

SYMBOL	BY	DESCRIPTION	DATE	APPROVAL
REVISIONS				
DESIGNED: SMM DRAWN: ELO CHECKED: CEL PROJECT ENGINEER: SYLVESTER TRACER: Kaidman DIRECTOR: [Signature]				
U.S. NAVAL STATION LONG BEACH, CALIFORNIA FAMILY HOUSING PROJECT FY-1963				
SAN PEDRO		SITE PLAN - FENCE PLAN BLOCK B		
APPROVED: [Signature] DATE: [Blank]				
GRAPHIC SCALE 1 INCH = 40 FEET 0 10 20 40 60				
SUBMITTED BY: [Signature] DATE: 12-25-62				
SCALE: 1" = 40'		SHEET: 5 OF 22 NO. 4555A 1 & 2 DRAWING NO. 37,047		

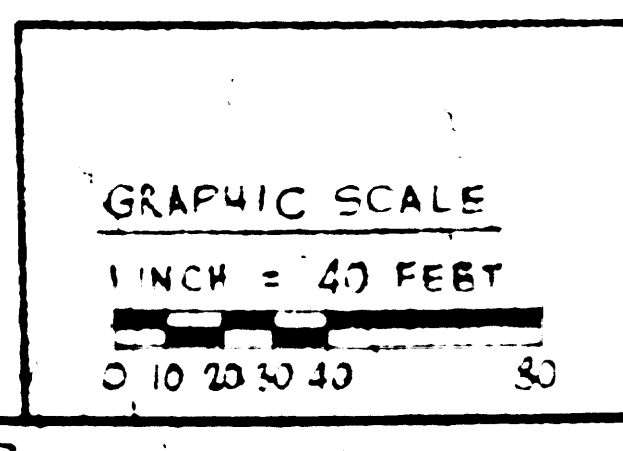
F.M. 21586-2





**SITE PLAN - BLOCK C**

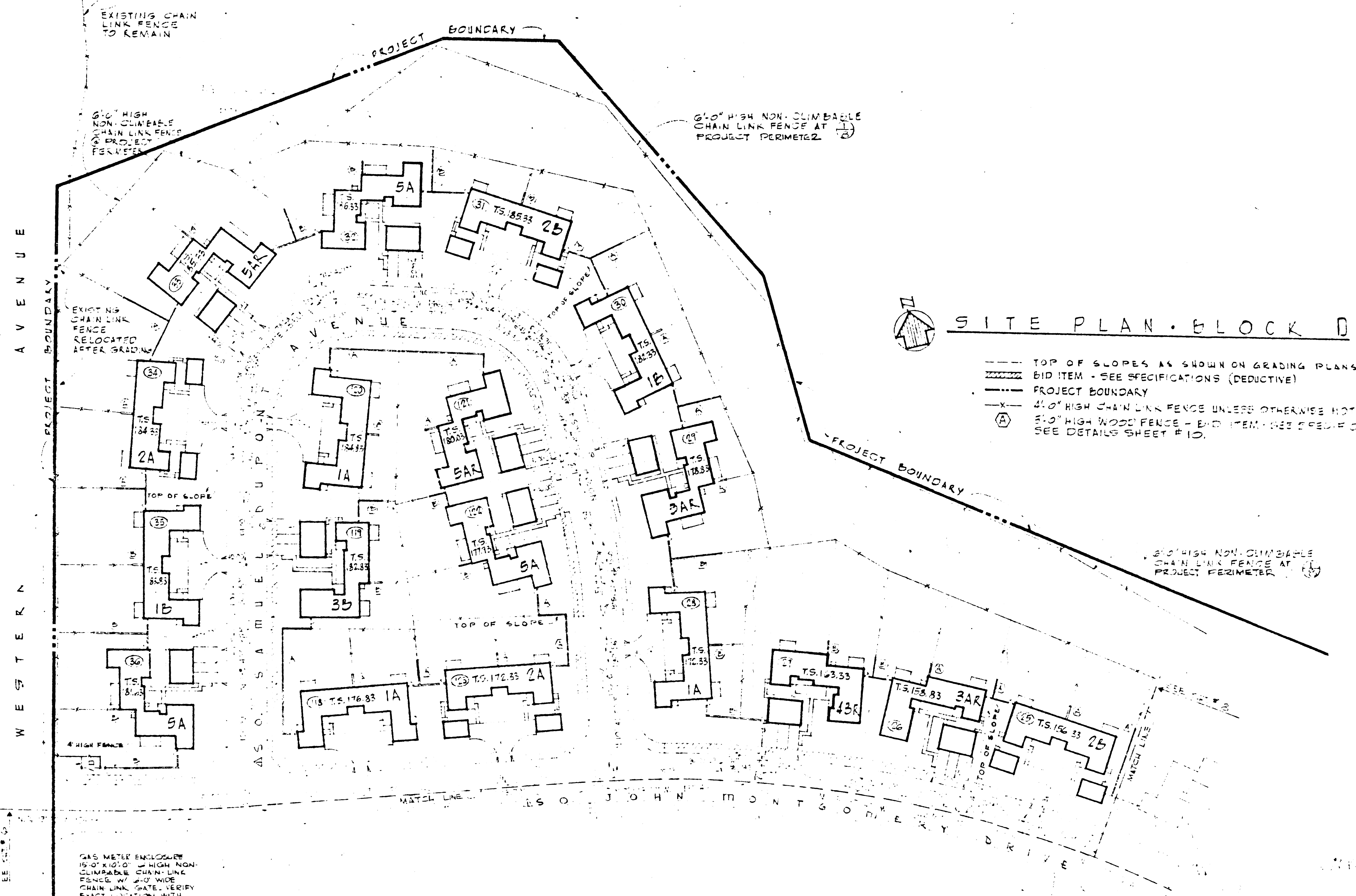
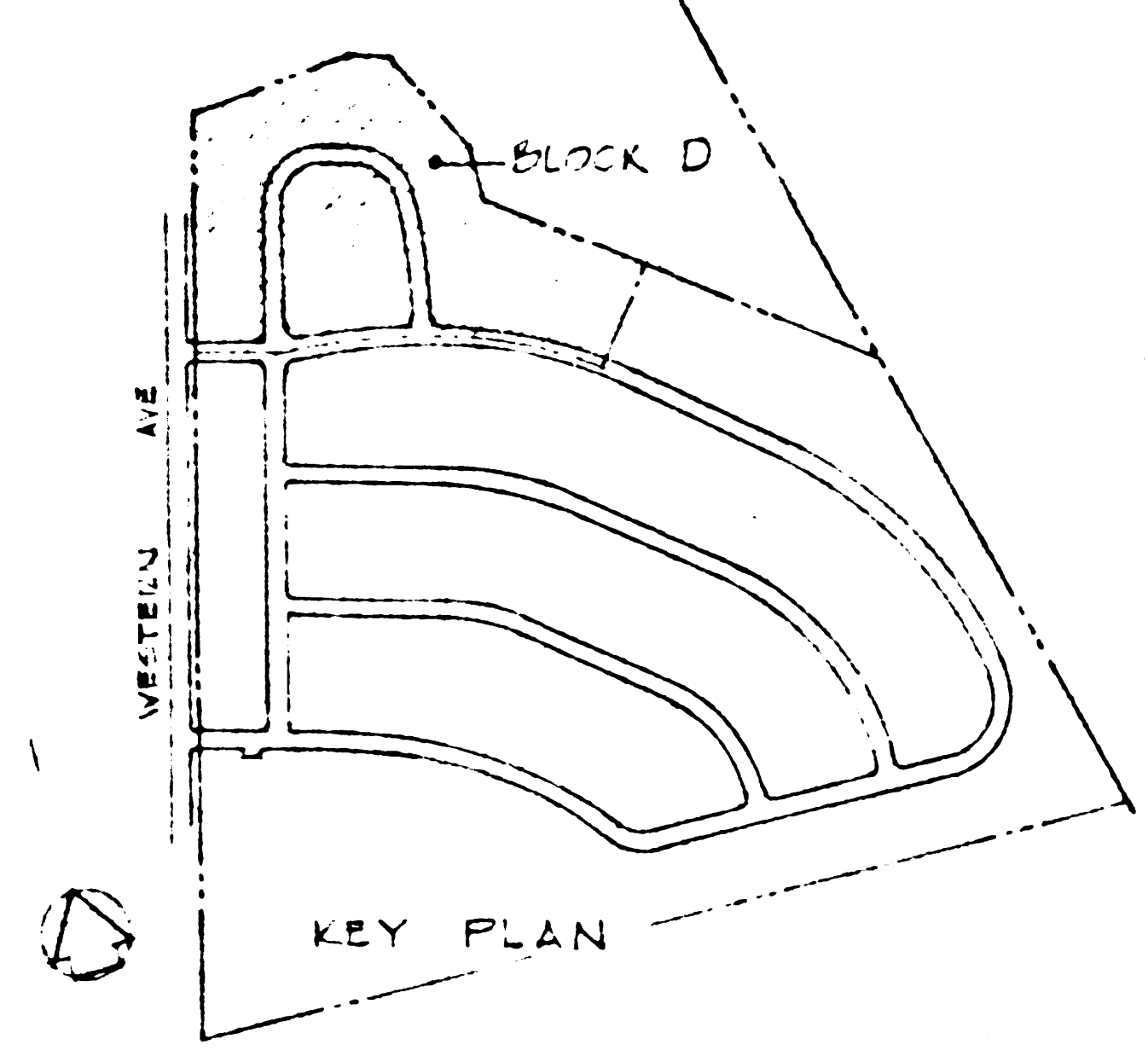
- TOP OF SLOPES SHOWN ON GRADING PLANS
- BID ITEM - SEE SPECIFICATIONS (DEDUCTIVE)
- PROJECT BOUNDARY
- 4'0" HIGH CHAIN LINK FENCE UNLESS OTHERWISE NOTED - BID ITEM (DEDUCTIVE)
- 5'0" HIGH WOOD FENCE - BID ITEM - SEE SPECIFICATIONS (DEDUCTIVE)
- SEE DETAIL SHEET F10.



SYMBOL	BY	DESCRIPTION	DATE	APPROVAL
REVISIONS				
DEPARTMENT OF THE NAVY SOUTHWEST DIVISION Edward H. Fickett & Associates, ARCHITECT 7421 Beverly Blvd., LOS ANGELES 36, CALIF.				
U.S. NAVAL STATION LONG BEACH, CALIFORNIA <b>FAMILY HOUSING PROJECT FY-1963</b>				
SAN PEDRO		SITE PLAN - FENCE PLAN BLOCK "C"		
APPROVED		DATE		
SUBMITTED BY		DATE		
DATE: 2-25-63		SCALE: 1" = 40'		
SHEET NO. 75		DATE: 2-25-63		

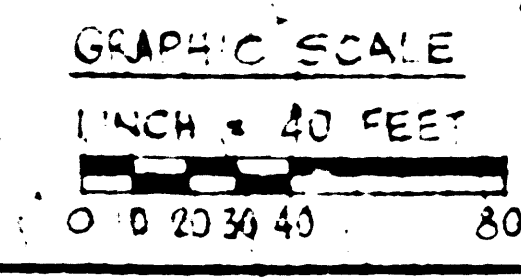
F.M. 21586-3





**SITE PLAN - BLOCK D**

- TOP OF SLOPES AS SHOWN ON GRADING PLANS
- BID ITEM - SEE SPECIFICATIONS (DEDUCTIVE)
- PROJECT BOUNDARY
- x- 6'-0" HIGH CHAIN LINK FENCE UNLESS OTHERWISE NOTED - BID ITEM (DEDUCTIVE)
- (A) 6'-0" HIGH WOOD FENCE - BID ITEM (SEE SPECIFICATIONS) (DEDUCTIVE) SEE DETAILS SHEET # 10.

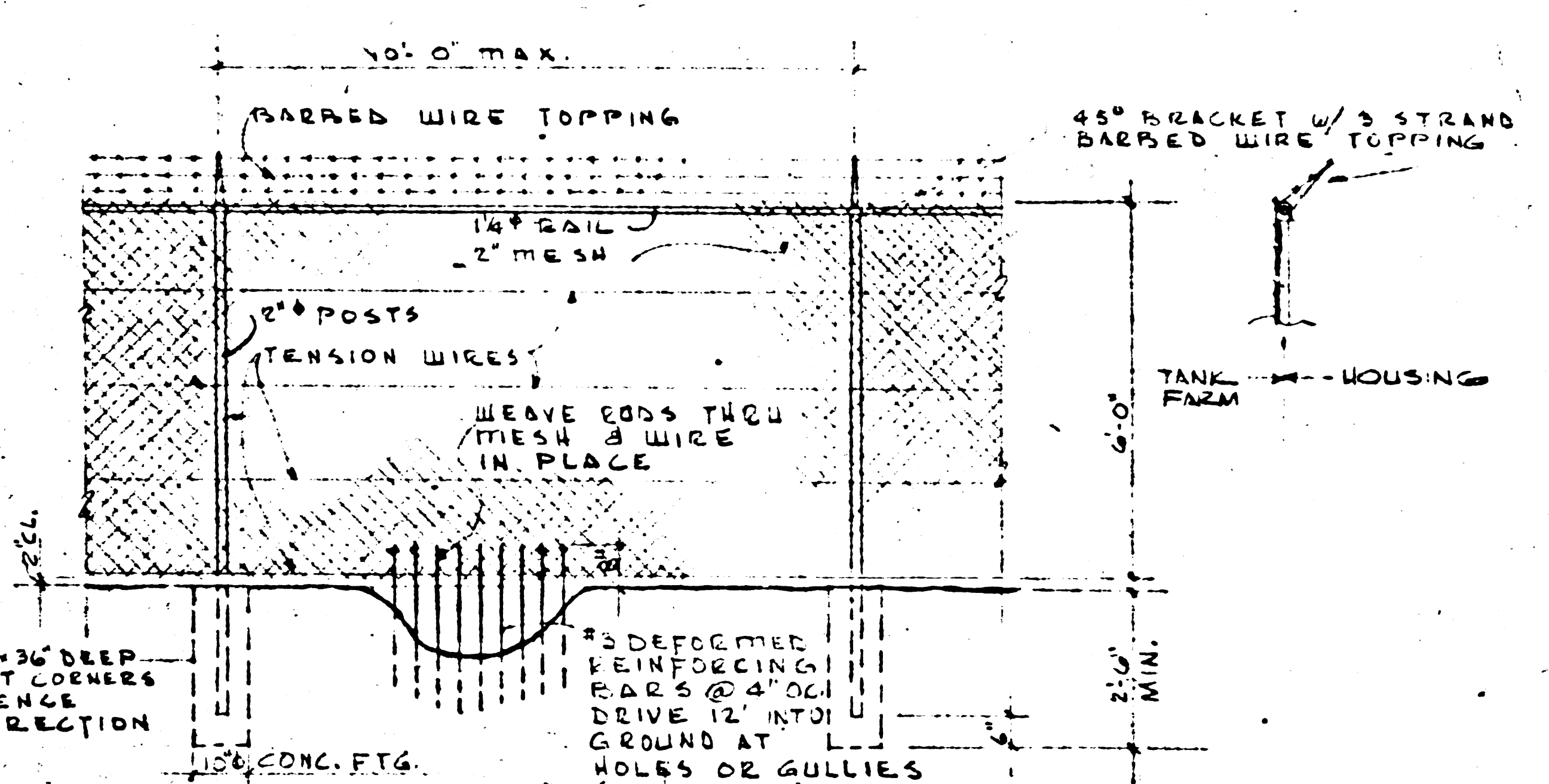
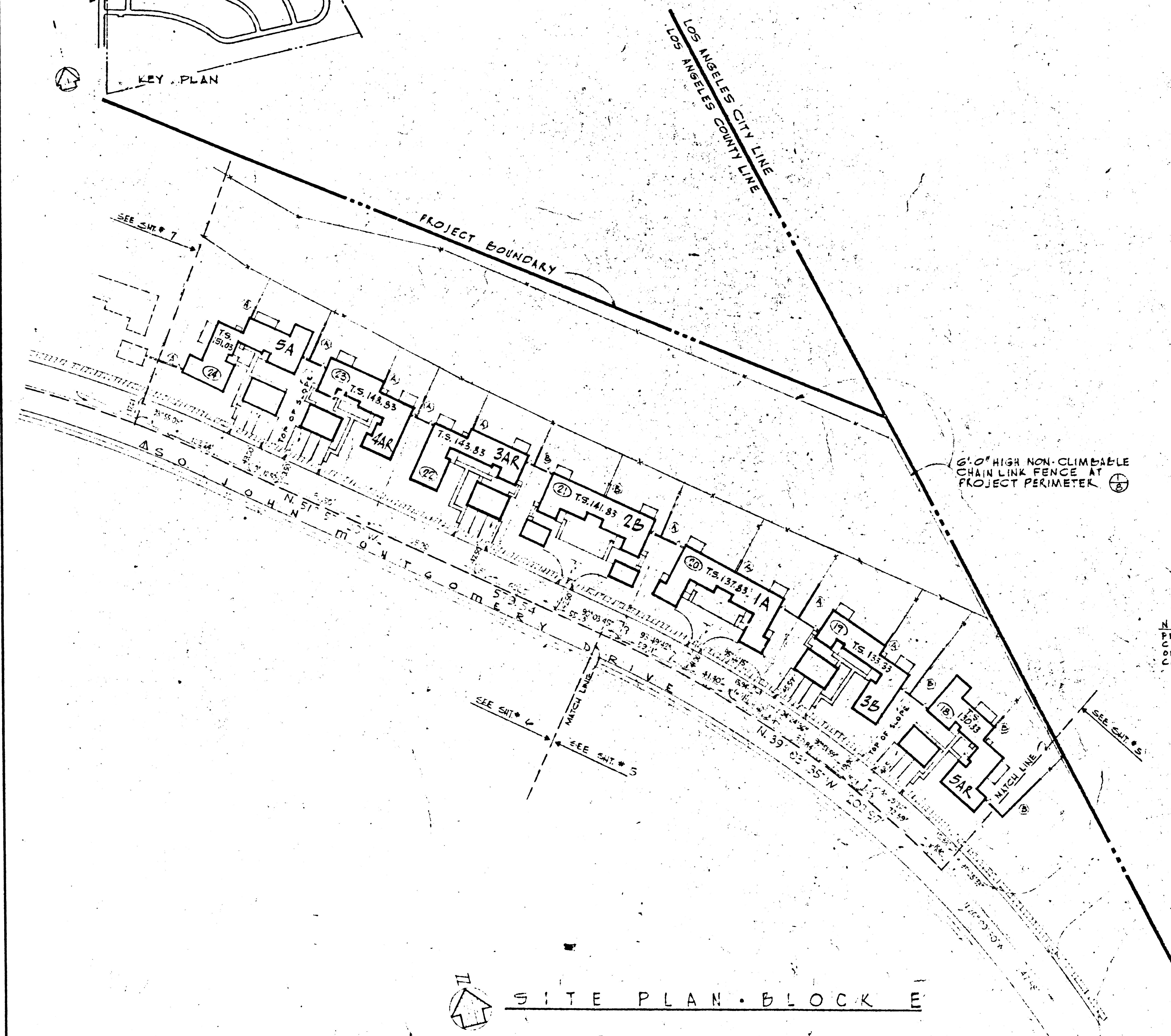
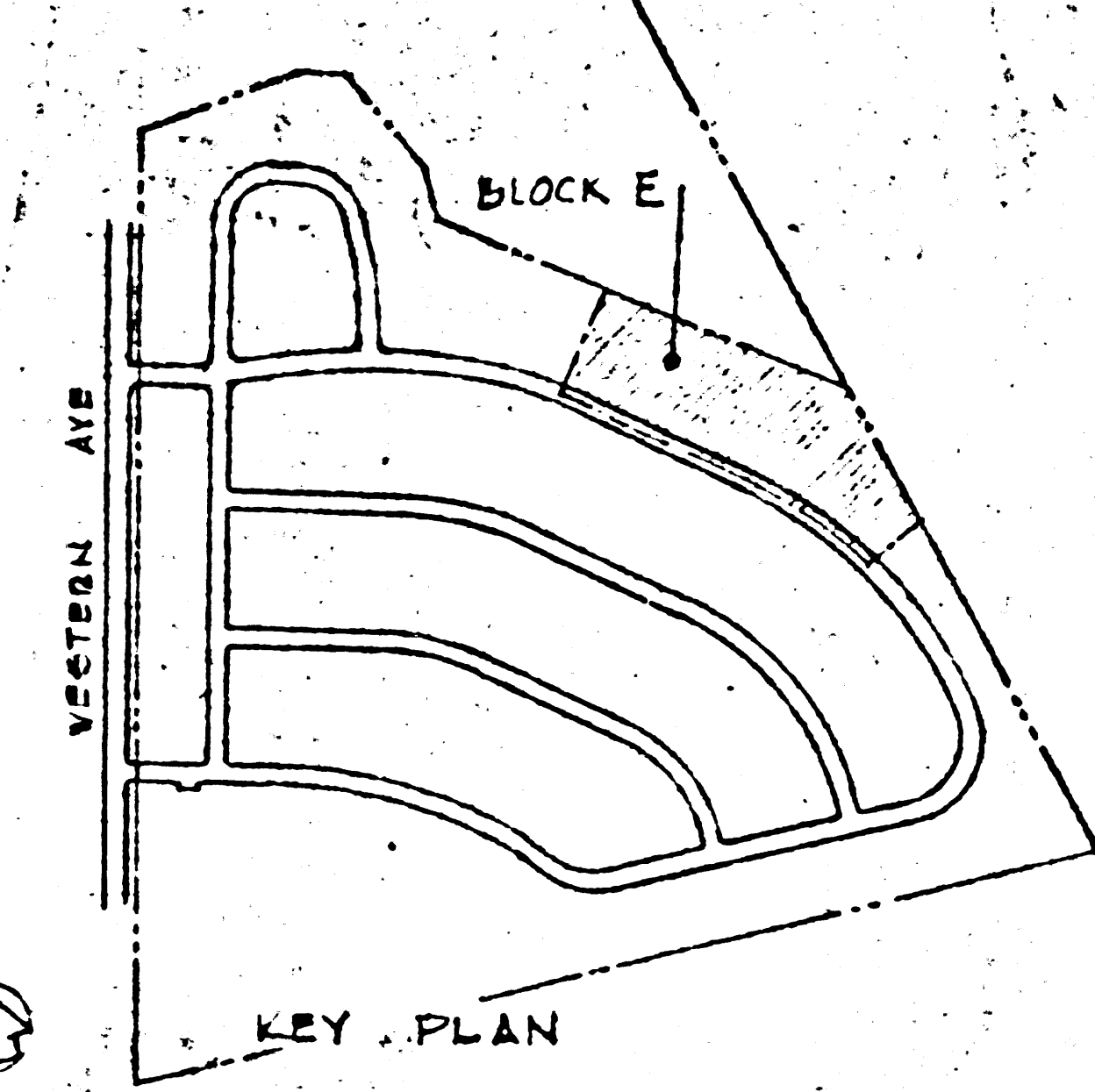


GAS METER ENCLOSURE IS 6'-0" HIGH NON-CRIMBABLE CHAIN LINK FENCE W/ 2'-0" WIDE CHAIN LINK GATE. VERIFY EXACT LOCATION WITH GAS COMPANY.

SYMBOL	BY	DESCRIPTION	DATE	APPROVAL
REVISIONS				
DRAWING NO.		DEPARTMENT OF THE NAVY SOUTHWEST DIVISION edward h. lickett a. i. a. architect 1211 Beverly Blvd.		
DESIGNED	RMM	U.S. NAVAL STATION LONG BEACH, CALIFORNIA		
DRAWN	ELD	FAMILY HOUSING PROJECT FY-1963		
CHECKED	GER	SAN PEBLO		
PROJ. ENG. IN CH.	SYLVESTER	SITE PLAN - FENCE PLAN BLOCK D		
BRANCH MGR.	W. J. ...	APPROVED _____ DATE _____		
DIRECTOR	...	APPROVED _____ DATE _____		
SUBMITTED BY		SCALE 1/2" = 20' (SEE SHEET 44583, 44584)		
DATE 10-05-62		SHEET 7 OF 32 (SEE 44583)		

F.M. 21586-4





NOTE: PROVIDE 12" x 36" DEEP CONC. FTG. AT CORNERS OR WHERE FENCE CHANGES DIRECTION.

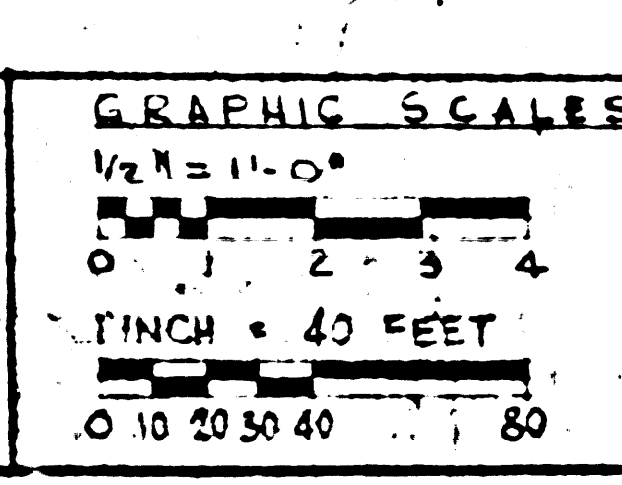
REINFORCING BARS @ 4" OC. DRIVE 12" INTO GROUND AT HOLES OR GULLIES (CALV. SOILS)

6'0" HIGH NON-CLIMBABLE CHAIN LINK FENCE AT PROJECT PERIMETER

⊕ TYP. NON-CLIMBABLE CHAIN LINK FENCING  
SCALE: 1/2" = 1'-0" (SEE SPECS. FOR ADDITIONAL INFORMATION)

SITE PLAN - BLOCK E

- TOP OF SLOPES AS SHOWN ON GRADING PLANS
- BID ITEM - SEE SPECIFICATIONS (DEDUCTIVE)
- PROJECT BOUNDARY
- 4'0" HIGH CHAIN LINK FENCE UNLESS OTHERWISE NOTED - BID ITEM (DEDUCTIVE)
- ⊕ 6'0" HIGH WOOD FENCE - BID ITEM - SEE SPECIFICATIONS (DEDUCTIVE) - SEE DETAIL SHEET # 10.



RECORD DRAWING

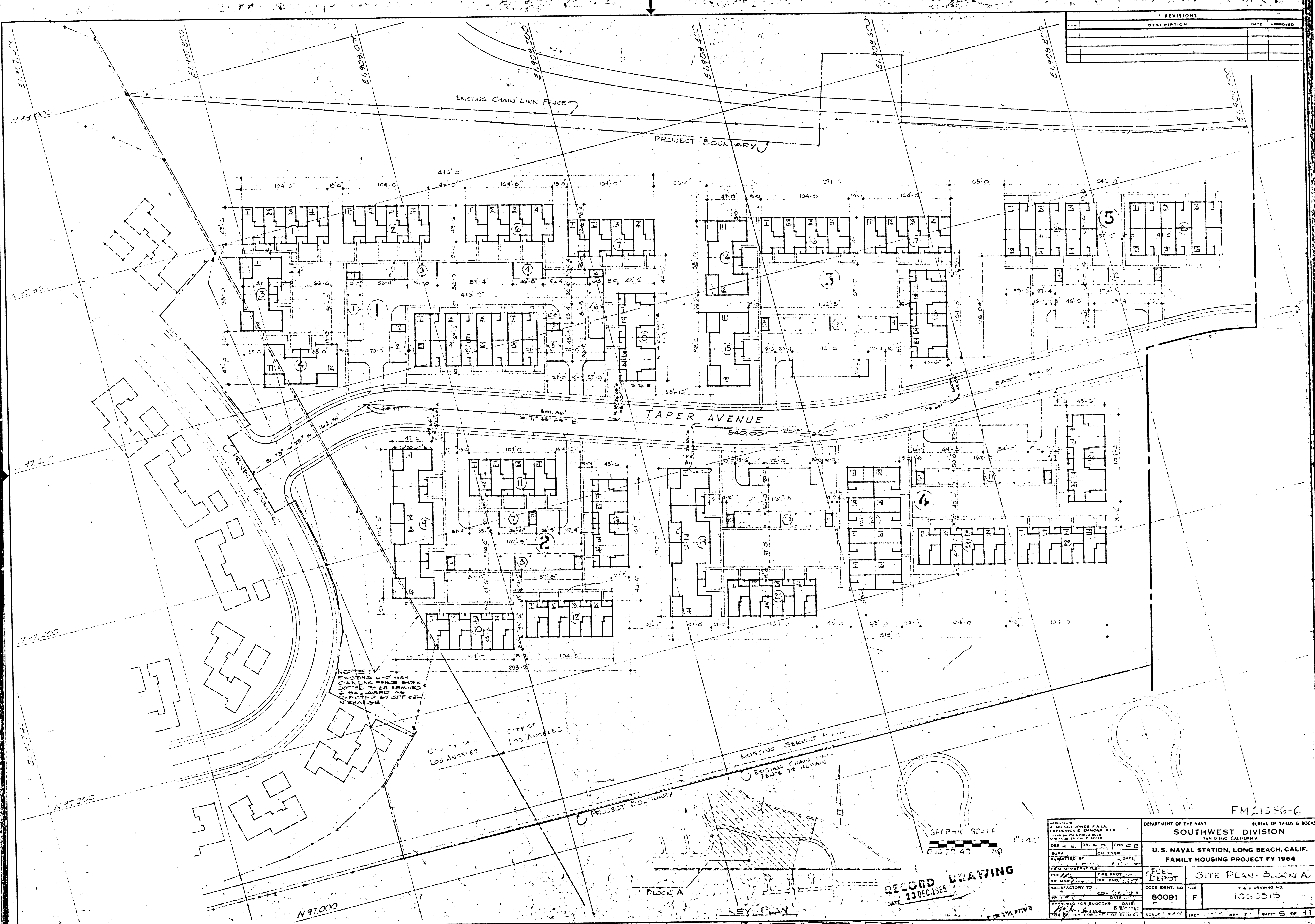
DATE: 10-28-65

FM 21586-5

NO.	DATE	DESCRIPTION	BY	APPROVAL
REVISIONS				
DEPARTMENT OF THE NAVY BUREAU OF YARDS AND DOCKS SAN DIEGO CALIFORNIA Edward H. Fickett, Chief Architect 3222 Beverly Blvd., Los Angeles 36, Calif.				
U. S. NAVAL STATION LONG BEACH, CALIFORNIA FAMILY HOUSING PROJECT FY-1963				
DESIGNED: RMM		SAN PEDRO		
DRAWN: ELO		SITE PLAN - FENCE PLAN		
CHECKED: CBL		BLOCK "E"		
PROJECT ENGINEER: SYLVESTER PROJECT MANAGER: [Signature]		SCALE: 1" = 40' SHEET: 8 OF 93 DATE: 10-28-65		

FM 21586-5





REVISIONS		
NO.	DESCRIPTION	DATE

NOTE:  
EXISTING 4' HIGH  
CHAIN LINK FENCE  
NOTED TO BE REMOVED  
AS ORDERED BY OFFICE  
MEMORANDUM

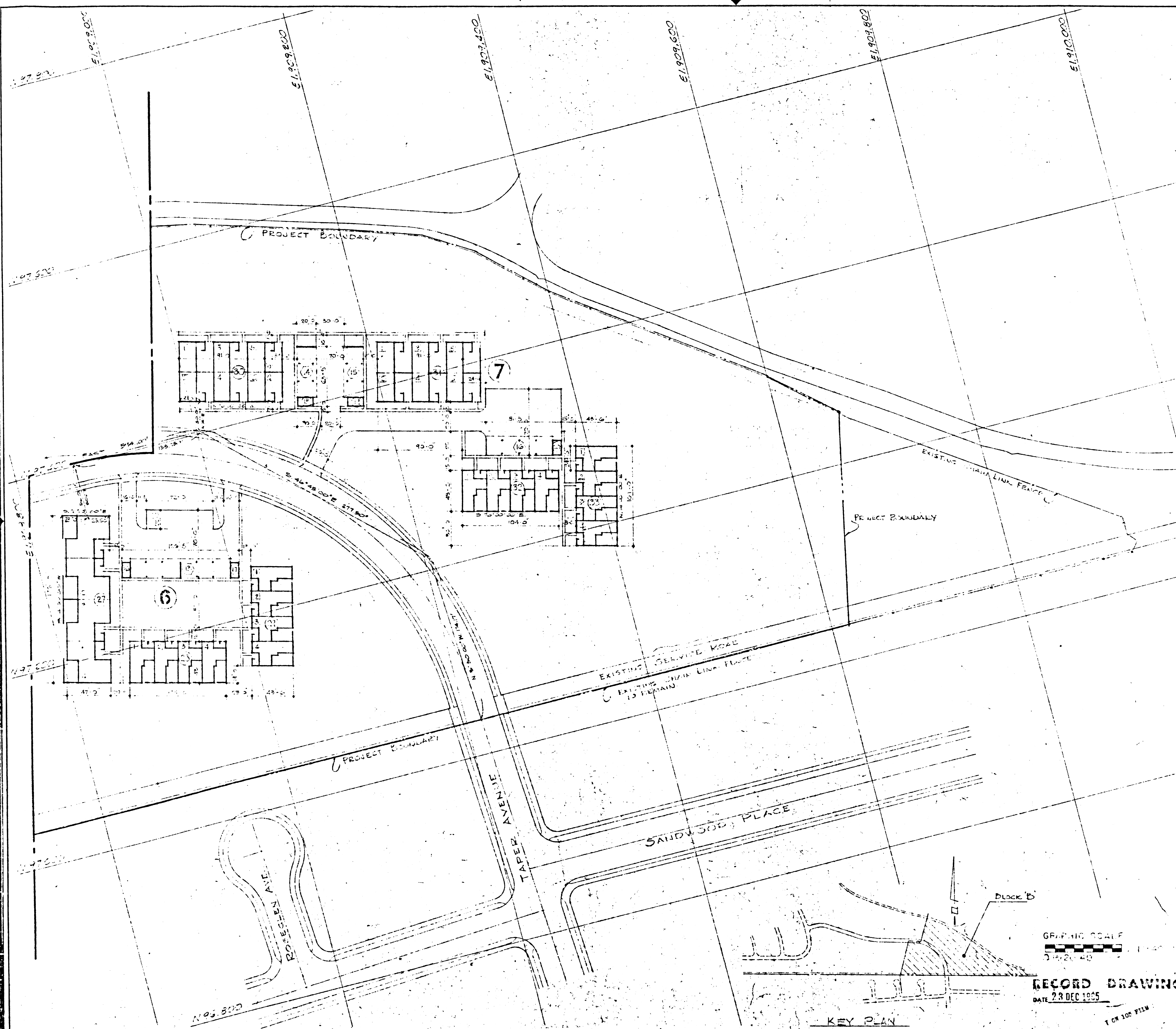
**RECORD DRAWING**  
DATE 23 DEC 1965

ARCHITECT: QUINCY JONES P.A.A. FREDERICK & SIMMONS A.T.A. 1244 AVENUE OF THE STARS WASHINGTON, D.C. 20004		DEPARTMENT OF THE NAVY BUREAU OF YARDS & DOCKS SOUTHWEST DIVISION SAN DIEGO, CALIFORNIA	
DESIGNED BY: CH ENGR DRAWN BY: CH ENGR CHECKED BY: CH ENGR DATE:		U.S. NAVAL STATION, LONG BEACH, CALIF. FAMILY HOUSING PROJECT FY 1964	
TITLE: FUEL DEPOT DRAWING NO.: 80091		SITE PLAN - BLOCK A Y & D DRAWING NO.: 1000513	
APPROVED FOR BIDDING: DATE 23 DEC 1965 FOR OFFICE USE ONLY:		SCALE: 1" = 40' SHEET 15 OF 41	

F.M. 21586-6



REVISIONS		
SYM	DESCRIPTION	DATE APPROVED



FM 21586-7

ARCHITECTS A. QUINCY JONES & P.A. A. FREDERICK S. BROWN & AIA 1244 SANTA MONICA BLVD. LOS ANGELES, CALIF. 90025		DEPARTMENT OF THE NAVY BUREAU OF YARDS & DOCKS SOUTHWEST DIVISION SAN DIEGO, CALIFORNIA	
DESIGNED BY: [Signature]		U.S. NAVAL STATION, LONG BEACH, CALIF. FAMILY HOUSING PROJECT FY 1964	
SUPERVISOR: [Signature]		FUEL DEPOSIT: [Signature]	
DATE: 11/1/64		CODE IDENT. NO. 80091	
SCHEDULE: [Signature]		SIZE: F	
DATE: 11/1/64		Y & D DRAWING NO. 1000210	
APPROVED FOR SUBMITTAL: [Signature]		SCALE: 1/8" = 1'-0"	
DATE: 11/1/64		SHEET NO. 2 OF 2	
BY: [Signature]		ROLL NO. [Blank]	

FM 21586-7