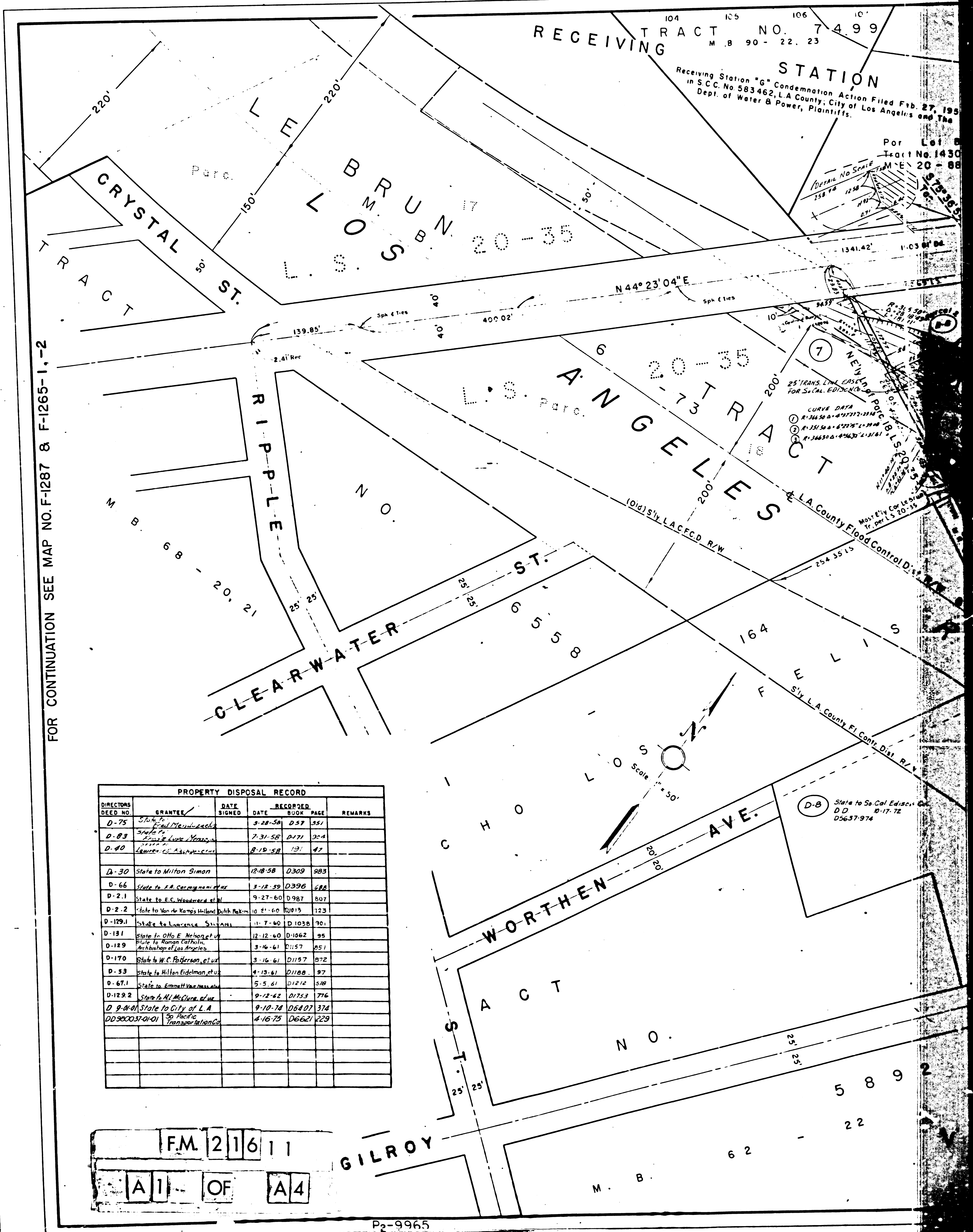


R/W ACQUISITION RECORD									
PARCEL NUMBER	GRANTOR	TYPE INSTRUMENT	DATE SIGNED	DATE RECORDED	BOOK PAGE	CONDEMNATION CASE	ADDITIONAL DOCUMENTS	REMARKS	
1	August V. Handorf	Fee	6-30-54	4491	106				
2	H. J. Harris Co.	Fee	7-9-54	42877	231				
D-2	State to War of Namps Inc.	DD	2-27-54	52999	164				
7	Caroline H. Burr	Fee	7-21-55	47246	302				
8	Wanda J. Jones et al.	Fee	6-19-54	43888	376				
D-8	State to SCE Co.	DD	8-24-72	10-1772	256,37	974			
9	Wm. J. Schmalz	Fee	11-2-54	44220	306				
10	Bell Brand Products	Fee	1-5-55	46559	106				
12	W. Co. Faison et al.	Fee	8-29-73	D8000	88				
13	F. J. Schmalz	Fee	6-15-54	44012	378				
14	Chas. K. Miller et al.	Fee	7-21-53	42262	340				
A	Seaman Light & Ice Co.	Q.C.	7-21-53	42262	335				
3	F. J. Co. Western DA	Q.C.	Unrecorded						
D	L.A. Trust & Safe Deposit Co.	FRTD	7-21-53	42262	313				
16	L. J. Egan et al.	Fee	5-17-55	47591	220				
A	Sec. Nat'l Bank of LA	FRTD	4-20-55	47590	48				
19	Geo. Boyles et al.	Fee	1-5-54	43522	174				
20	J. J. Heber et al.	Fee	1-24-54	41680	166				
C	Bank of America	FRTD	1-24-54	41676	212				
22	Manly S. Delgado et al.	Fee	1-15-54	41607	323				
A	Tithe Ins. & Trust Co.	FRTD	1-15-54	41607	344				
B	Tithe Ins. & Trust Co.	FRTD	1-15-54	41607	339				
23	Geo. Boyles et al.	Fee	12-25-53	43459	251				
24	George F. Longo et al.	Fee	9-15-53	42691	392				
D-24	Walter J. Geron	D.D.	12-1-53	43029	393				
B	Corporation of America	FRTD	9-15-53	42691	382				
25	C. G. Robinson et al.	Fee	7-24-53	42296	39				
26	Gust Bjorkland	Fee	1-18-54	43614	285				
27	Wanda J. Jones et al.	Fee	8-20-52	39721	392				
A	Bank of America	FRTD	8-20-52	39721	332				
28	C. J. Los Angeles	Fee	7-30-52	39494	4				
30	Stephan H. J. Jones	Fee	7-30-52	39494	4				
A	Tithe Ins. & Trust Co.	FRTD	7-30-52	39494	4				
3	Tithe Ins. & Trust Co.	FRTD	7-30-52	39494	22				
32	Terry A. Grant et al.	Fee	8-12-52	39596	16				
A	Corporation of America	FRTD	8-12-52	39596	18				
33	Ernest Wheeler et al.	Fee	8-25-53	42544	77				
34	Rena E. Hancock et al.	Fee	8-26-52	39704	88				
35	Orin D. Holt et al.	Fee	11-19-52	41335	352				
A	Bank of America	FRTD	11-19-52	41335	362				
36	Orin D. Holt et al.	Fee	8-17-53	42477	427				
37	N.W. Barwin et al.	Fee	4-8-54	44293	509				
A	Citizens Nat'l Bank	FRTD	4-8-54	44293	292				
38	B. Stevenson et al.	Fee	5-14-54	44214	304				
39	Southern Pacific RR Co.	Fee	1-7-50	56359	16	664204	248	City of Los Angeles et al.	
40	Gale M. Anderson et al.	Fee	8-8-52	49472	40				
42	Frieda Vign	Fee	8-6-51	42404	510				
41	Southern Pac. Co.	Fee	12-15-53	4693	362				
43	Leq. Harding et al.	Fee	5-5-52	39775	96				
C	Sec. Nat'l Bank of LA	FRTD	9-2-52	39775	125				
44	Timothy Mahone	Fee	8-5-53	42364	412				
A	N. American Realty Co.	FRTD	8-5-53	42377	226				
45	Walter B. Press	Fee	7-2-54	42999	151				
A	Corp. of America	FRTD	10-27-54	45949	262				
46	Allard A. Gore	Fee	1-26-54	43678	190				
A	Tithe Ins. & Trust Co.	FRTD	1-26-54	43678	507				
47	Raymond R. Williams et al.	Fee	5-26-52	39589	20				
A	Wm. J. Schmalz	Q.C.	5-28-52	39589	11				
48	Chas. D. Farney et al.	Fee	12-11-53	43772	409				
A	Tithe Ins. & Trust Co.	FRTD	12-11-53	43772	435				
49	Wm. J. Schmalz et al.	Fee	5-21-54	44654	123				
50	Wm. J. Schmalz	Fee	8-19-54	45367	242				
52	H. E. Feale	Fee	4-26-53	44422	340				
A	Tithe Ins. & Trust Co.	FRTD	4-26-54	44424	26				
53	Theodore Diaz	Fee	6-14-51	41535	181				
A	Corp. of America	FRTD	6-14-51	41533	172				
54	Lena Williams et al.	Fee	6-15-51	41534	404				
55	Winton M. Carl	Fee	7-16-51	41770	516				
A	Tithe Ins. & Trust Co.	FRTD	7-16-51	41769	305				
B	Pac. States Marine	FRTD	7-16-51	41769	371				
56	Miles C. Major	Fee	9-19-52	39888	712				
57	H. E. Feale et al.	Fee	3-4-54	44887	350				

R/W ACQUISITION RECORD									
PARCEL NUMBER	GRANTOR	TYPE INSTRUMENT	DATE SIGNED	DATE RECORDED	BOOK PAGE	CONDEMNATION CASE	ADDITIONAL DOCUMENTS	REMARKS	
58	Wm. J. Schmalz et al.	Fee	6-20-51	36500	166				
A	Bank of America	FRTD	6-20-51	36500	149				
59	Chas. K. Miller et al.	Fee	8-15-51	37005	62				
A	Bank of America	FRTD	8-15-51	36998	410				
60	M. M. Wenzel et al.	Fee	5-19-54	44428	300				
A	Bank of America	FRTD	5-19-54	44428	400				
62	L. S. Church	Fee	5-11-54	44549	74				
A	Corp. of America	FRTD	5-11-54	44548	412				
63	R. G. Bennett et al.	Fee	5-6-54	44515	130				
A	Tithe Ins. & Trust Co.	FRTD	5-6-54	44515	189				
64	P. A. LaCord	Fee	5-19-54	44615	200				
A	Bank of America	FRTD	5-19-54	44616	402				
66	E. H. Rosen et al.	Fee	6-14-51	36533	179				
67	Jay Cunningham et al.	Fee	8-28-51	37074	390				
A	Bank of America	FRTD	8-28-51	37074	289				
68	Albert Harris et al.	Fee	6-26-51	36621	526				
A	L. A. T. & Safe Deposit Co.	FRTD	6-26-51	36620	411				
69	Gladys Emma Ross	Fee	7-24-51	36878	376				
A	P. J. Lissosa et al.	Q.C.	Unrecorded						
70	Frank Rosch et al.	Fee	6-15-51	36524	422				
72	Martha A. Oiler	Fee	6-12-51	36513	161				
A	Southern Title & Trust Co.	FRTD	6-12-51	36514	144				
73	Walter B. Press	Fee	6-7-51	36481	245				
74	Charlita M. Bowman	Fee	6-2-54	44719	286				
A	Harry P. Lissosa et al.	Q.C.	Unrecorded						
75	G. J. Tibbs et al.	Fee	6-19-51	36567	392				
A	Tithe Ins. & Trust Co.	FRTD	6-19-51	36567	414				
76	Leo Wolfson Berger	Fee	7-10-51	36724	321				
D-76	State to Condemnation	D.D.	1-16-52	53379	913				
77	H. C. Ward et al.	Fee	6-13-51	36524	420				
78	H. L. Brodhead et al.	Fee	3-15-54	44071	459				
A	Tithe Ins. & Trust Co.	FRTD	3-15-54	44072	100				
79	Wm. C. Farling	Fee	7-20-51	36810	448				
A	Bank of America	FRTD	7-20-51	36810	410				
80	Conie R. McBride	Fee	11-18-54	44961	195				
A	Customs & Bonded	FRTD	2-18-55	46240	414				
81	M. V. Butler et al.	Fee	5-19-54	44615	296				
A	Citizens Nat'l Bank	FRTD	5-19-54	44616	404				
82	L. S. Church	Fee	4-26-54	44432	346				
A	Citizens Nat'l Bank	FRTD	4-26-54	44432	369				
83	A. G. Enson et al.	Fee	7-3-51	36670	294				
84	Alden McKnight et al.	Fee	9-28-52	39910	376				
D-84	State to D. E. Meelers	D.D.	1-16-52	53314	414				
85	C. G. Volpaco et al.	Fee	3-16-54	44349	217				
A	Corp. of America	FRTD	4-16-54	44349	213				
86	S. P. Company	FEE	1-6-55	3-17-55	47217	311			
87	John W. Rice et al.	Fee	8-30-51	37114	269				
88	Southern Pacific Co.	Fee	3-25-62	56553	368				
89	James J. Sharpe et al.	Fee	8-1-54	11-1-54	45994	42			
90	S. P. Company	FEE	1-6-55	46572	132				
91	Sanjour Company et al.	Fee	5-6-54	44515	140				
A	Bank of America	FRTD	5-6-54	44515	131				
92	S. P. Company	FEE	1-6-55	3-17-55	47217	311			
92	Times L. Lipp	Fee	2-9-56	47217	311				
102	Wm. J. Schmalz et al.	Fee	7-5-51	36690	251				
D-102	State to Fluor L. Lipp	D.D.	1-10-56	40007	24				
105	Chas. D. Farney et al.	Fee	8-29-51	36606	305				
A	Bank of America	FRTD	6-22-51	36601	26				

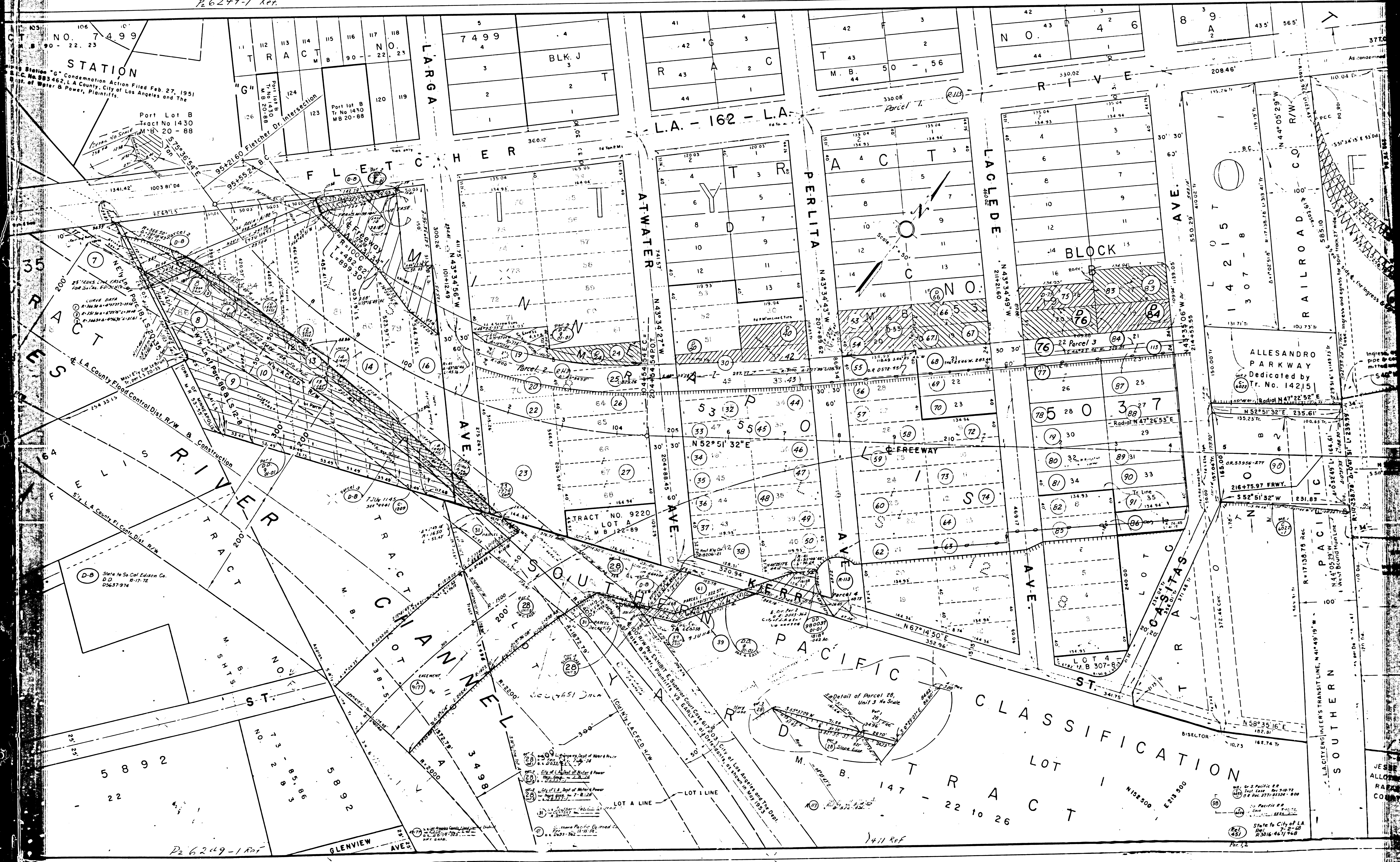
106	Royal Math et al.	Fee	4-22-51	36600	303				
107	Florence H. Hagg et al.	Fee	7-11-51	36726	57				
D-107	State to Fluor L. Lipp	D.D.	9-19-56	52342	270				
108	Sandra A. Nussbaum et al.	Fee	7-12-51	36746	355				
A	Bank of America	FRTD	7-12-51	36746	472				
109	C. E. J. Burton et al.	Fee	7-13-51	36760	179				
111	Esther Wilson	Fee	6-25-51	36609	198				
112	Geo. F. Cook et al.	Fee	6-26-51	36671	347				
113	Angie Rader	Fee	8-9-53	42773	356				
114	Louise Minetti	Fee	7-25-51	36843	173				
A	Bank of America	FRTD	7-25-51	36843	209				
117	Nicholas Petroski et al.	Fee	8-10-51	36948	365				
A	Corp. of America	FRTD	8-10-51	36949	376				
118	Honoria Guzman et al.	Fee	2-9-54	43792	374				
A	Bank of America	FRTD	2-9-54	43792	424				
B	Calif. Trust Co.	FRTD	2-9-54	43790	159				
119	Paul H. Sailer et al.	Fee	7-3-51	36670	292				
120	Wm. J. Schmalz et al.	Fee	8-9-51	36946	350				
A	Wm. J. Schmalz et al.	FRTD	8-9-51	36946	16				
C	Wm. J. Schmalz et al.	Q.C.	Unrecorded						
122	J. M. Sinclair	Fee	9-24-52	39952	347				
A	Se. Cal. Escrow Co.	FRTD	9-29-52	39952	270				
B	Tithe Ins. & Trust Co.	FRTD	9-29-52	39953	221				



PROPERTY DISPOSAL RECORD						
DIRECTOR DEED NO.	GRANTEE	DATE SIGNED	DATE RECORDED	BOOK PAGE	REMARKS	
D-75	State to Fluor L. Lipp	1-16-52	53314	414		
D-75	State to Fluor L. Lipp	1-16-52	53314	414		
D-83	State to Fluor L. Lipp	1-16-52	53314	414		
D-90	State to Fluor L. Lipp	1-16-52	53314	414		
D-30	State to Milton Simon	12-12-50	D309			

1411 Ref.

P26249-1 Ref.



STATION
 Port Lot B
 Tract No 1430
 M.B. 20-88

STATION
 Port Lot B
 Tract No 1430
 M.B. 20-88

STATION
 Port Lot B
 Tract No 1430
 M.B. 20-88

STATION
 Port Lot B
 Tract No 1430
 M.B. 20-88

STATION
 Port Lot B
 Tract No 1430
 M.B. 20-88

STATION
 Port Lot B
 Tract No 1430
 M.B. 20-88

STATION
 Port Lot B
 Tract No 1430
 M.B. 20-88

STATION
 Port Lot B
 Tract No 1430
 M.B. 20-88

STATION
 Port Lot B
 Tract No 1430
 M.B. 20-88

STATION
 Port Lot B
 Tract No 1430
 M.B. 20-88

TRACT NO. 7499
 BLOCK J

TRACT NO. 7499
 BLOCK J

TRACT NO. 7499
 BLOCK J

TRACT NO. 7499
 BLOCK J

TRACT NO. 7499
 BLOCK J

TRACT NO. 7499
 BLOCK J

TRACT NO. 7499
 BLOCK J

TRACT NO. 7499
 BLOCK J

TRACT NO. 7499
 BLOCK J

TRACT NO. 7499
 BLOCK J

TRACT NO. 7499
 BLOCK J

TRACT NO. 7499
 BLOCK J

TRACT NO. 7499
 BLOCK J

TRACT NO. 7499
 BLOCK J

TRACT NO. 7499
 BLOCK J

TRACT NO. 7499
 BLOCK J

TRACT NO. 7499
 BLOCK J

TRACT NO. 7499
 BLOCK J

TRACT NO. 7499
 BLOCK J

TRACT NO. 7499
 BLOCK J

TRACT NO. 7499
 BLOCK J

TRACT NO. 7499
 BLOCK J

TRACT NO. 7499
 BLOCK J

TRACT NO. 7499
 BLOCK J

TRACT NO. 7499
 BLOCK J

TRACT NO. 7499
 BLOCK J

TRACT NO. 7499
 BLOCK J

TRACT NO. 7499
 BLOCK J

TRACT NO. 7499
 BLOCK J

TRACT NO. 7499
 BLOCK J

TRACT NO. 7499
 BLOCK J

TRACT NO. 7499
 BLOCK J

TRACT NO. 7499
 BLOCK J

TRACT NO. 7499
 BLOCK J

TRACT NO. 7499
 BLOCK J

TRACT NO. 7499
 BLOCK J

TRACT NO. 7499
 BLOCK J

TRACT NO. 7499
 BLOCK J

TRACT NO. 7499
 BLOCK J

TRACT NO. 7499
 BLOCK J

TRACT NO. 7499
 BLOCK J

TRACT NO. 7499
 BLOCK J

TRACT NO. 7499
 BLOCK J

TRACT NO. 7499
 BLOCK J

TRACT NO. 7499
 BLOCK J

TRACT NO. 7499
 BLOCK J

TRACT NO. 7499
 BLOCK J

TRACT NO. 7499
 BLOCK J

TRACT NO. 7499
 BLOCK J

TRACT NO. 7499
 BLOCK J

TRACT NO. 7499
 BLOCK J

TRACT NO. 7499
 BLOCK J

TRACT NO. 7499
 BLOCK J

TRACT NO. 7499
 BLOCK J

TRACT NO. 7499
 BLOCK J

TRACT NO. 7499
 BLOCK J

TRACT NO. 7499
 BLOCK J

TRACT NO. 7499
 BLOCK J

TRACT NO. 7499
 BLOCK J

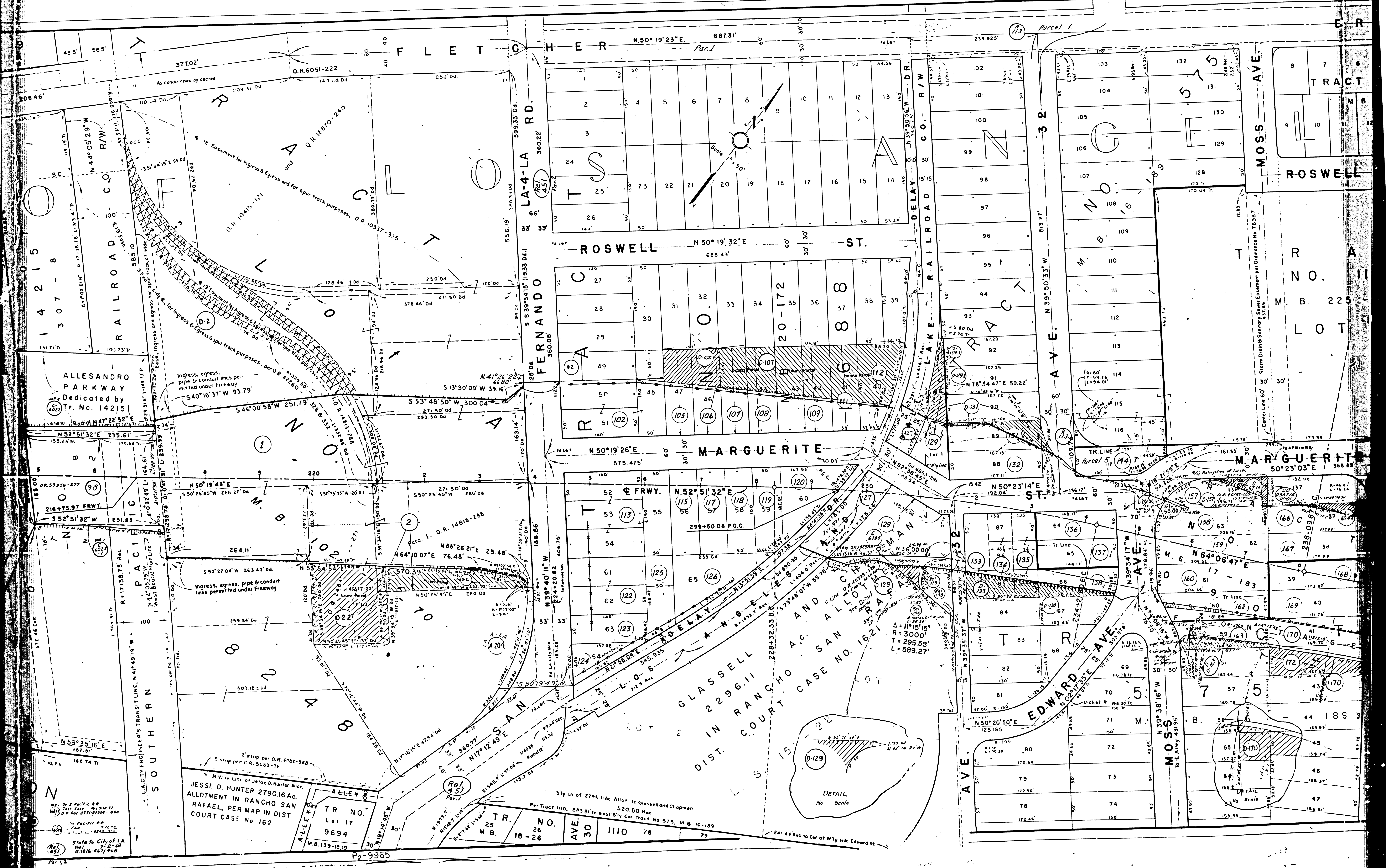
TRACT NO. 7499
 BLOCK J

P26249-1 Ref.

4790 Ref.

1411 Ref.

Page 2



ALLESANDRO
PARKWAY
Dedicated by
Tr. No. 14215

JESSE D. HUNTER 2790.16 AC.
ALLOTMENT IN RANCHO SAN
RAFAEL, PER MAP IN DIST
COURT CASE No 162

TR. NO. 9694
M.B. 139-1819

TR. NO. 1110 78
M.B. 18-26
AVE. 30

DETAIL
No Scale

State to City of LA
R3016-4671-648

P2-9965

