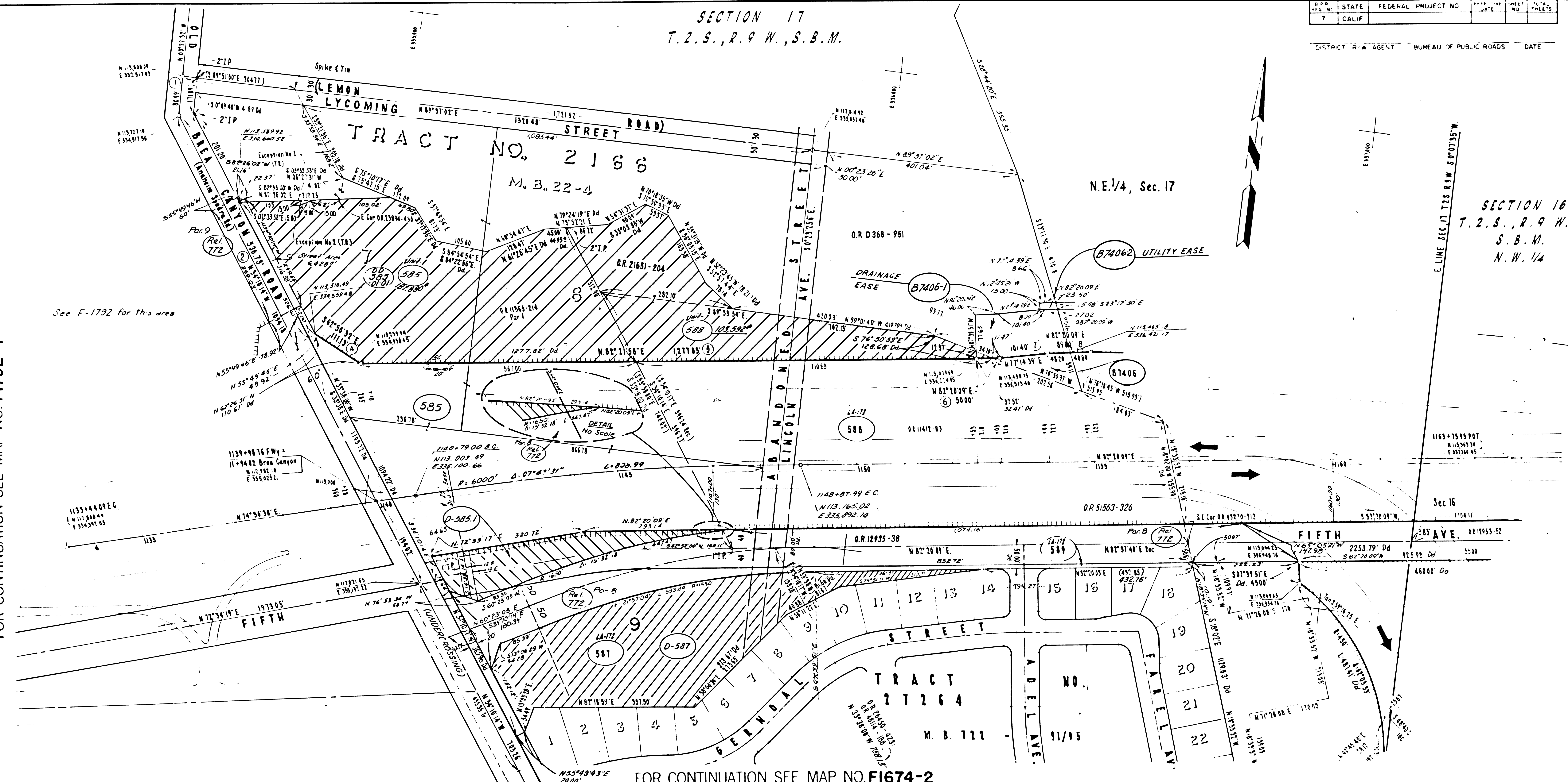


SECTION 17  
T. 2. S., R. 9 W., S. B. M.

STATE	FEDERAL PROJECT NO.	DATE	TOTAL SHEETS
CALIF			



FOR CONTINUATION SEE MAP NO. F1792-7

FOR CONTINUATION SEE MAP NO. F1675-2

PARCEL NO.	GRANTOR OR GRANTEE	AREA*		INST.	RECORDING DATA		PARCEL NO.	GRANTOR OR GRANTEE	AREA*		INST.	RECORDING DATA	
		TO BE ACQUIRED	EXCESS TOTAL		DATE	O. R.			TO BE ACQUIRED	EXCESS TOTAL		DATE	O. R.
585	T. E. & P. ST. CO.			1172	4-3-56	51574-42							
587	FRANK & McWILLIAM et ux			1172	7-28-56	50438-260							
588	FRANK & McWILLIAM et ux			1172	6-26-56	51563-316							
589	LOUIS L. COLEN			1172	4-10-56	50843-336							
585	LOUIS L. COLEN			1172	10-18-56	52574-50							
589	TITLE INS. & TRUST CO.			1172	4-10-56	50842-444							
B7406	W. D. ADAMS, et ux	6,990	407,050	Fee	6-2-67	D3667-3							
B7406-1	W. D. ADAMS, et ux	16,628	DRAINAGE EASE	Fee	7-1-67	D3667-3							
B7406-2	W. D. ADAMS, et ux	503	UTILITY EASE	Fee	7-1-67	D3756-655							
D-585.1	State to State Investment Corp.			DD	11-10-70	D4901-507							
D-587	State to State Investment Corp.			DD	4-24-70	D4815-592							
Rel-772	State to L.A. Co.			Rel	3-1-71	D3990-60185							
DD585	MARCELLIN			DD	6-4-75	D6677-87							

ISSUE DATE  
12-11-70  
5-21-75

STATE OF CALIFORNIA  
BUSINESS & TRANSPORTATION AGENCY  
DEPARTMENT OF TRANSPORTATION

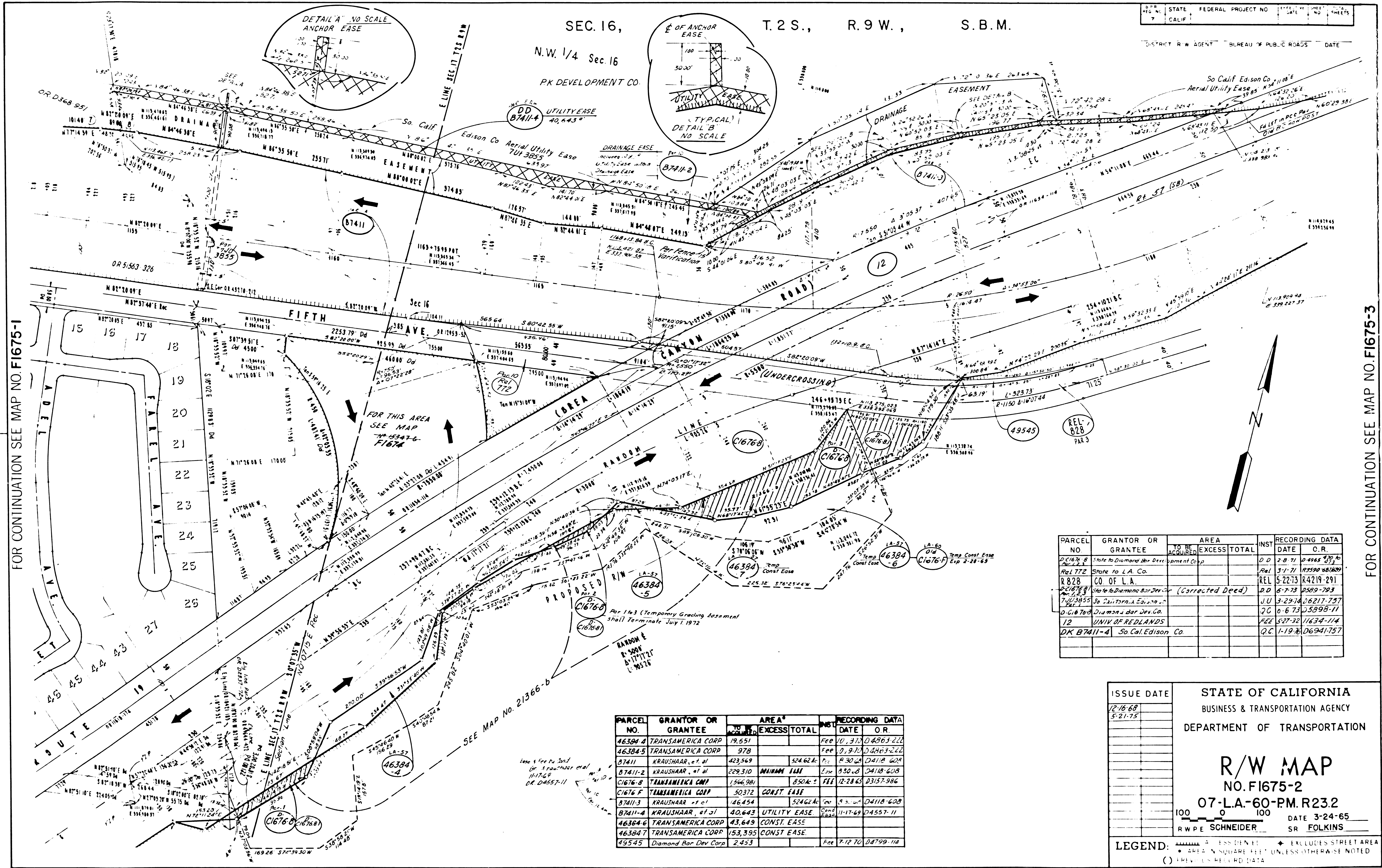
R/W MAP  
NO. F1675-1  
07-L.A.-60-PM.R23.2

100 0 100  
RWPE SCHNEIDER SR FOLKINS

DATE 3-24-65

LEGEND:  
 ( ) AREA IN SQUARE FEET UNLESS OTHERWISE NOTED  
 ( ) PREVIOUS RECORD DATA





FOR CONTINUATION SEE MAP NO F1675-1

FOR CONTINUATION SEE MAP NO F1675-3

STATE	FEDERAL PROJECT NO.	DATE	SHEET NO.	TOTAL SHEETS
CALIF.				

DISTRICT R/W AGENT: BUREAU OF PUBLIC ROADS DATE:

PARCEL NO.	GRANTOR OR GRANTEE	TO BE ACQUIRED	AREA EXCESS TOTAL	INST DATE	RECORDING DATA O.R.
C1676-B	State to Diamond Bar Development Corp.			D.D. 2-8-71	D4965-222
REL 772	State to L.A. Co.			REL 3-1-71	D5950-48769
R 828	CO. OF L.A.			REL 5-22-73	R4219-291
C1676-B	State to Diamond Bar Dev. Corp. (Corrected Deed)			D.D. 6-7-73	D580-793
7003855	State to California Edison Co.			J.U. 3-29-74	D6217-757
D-G-670-0	Diamond Bar Dev. Co.			J.C. 6-6-73	D5998-11
12	UNIV. OF REDLANDS			FEE 5-27-32	D1634-114
DK B7411-4	So. Cal. Edison Co.			J.C. 1-19-36	D6941-757

PARCEL NO.	GRANTOR OR GRANTEE	NO. ACQUIRED	AREA EXCESS TOTAL	INST DATE	RECORDING DATA O.R.
46384-4	TRANSAMERICA CORP	19,551		Fee 10-31-70	D4863-222
46384-5	TRANSAMERICA CORP	978		Fee 7-9-70	D4263-222
B7411	KRAUSHAAR, et al	423,549	524,624	Fee 8-30-68	D418-608
B7411-2	KRAUSHAAR, et al	229,310	MINIMUM EASE	Fee 8-30-68	D418-608
C1676-B	TRANSAMERICA CORP	1,566,981	8504-2	Fee 12-28-65	D3157-984
C1676-F	TRANSAMERICA CORP	50,372	CONST. EASE		
B7411-3	KRAUSHAAR, et al	46,454	524,624	Fee 9-3-68	D418-608
B7411-4	KRAUSHAAR, et al	40,643	UTILITY EASE	Const 11-17-69	D4557-11
46384-6	TRANSAMERICA CORP	43,649	CONST. EASE		
46384-7	TRANSAMERICA CORP	153,395	CONST. EASE		
49545	Diamond Bar Dev Corp	2,453		Fee 7-12-70	D4799-114

ISSUE DATE: 12-16-68

STATE OF CALIFORNIA  
BUSINESS & TRANSPORTATION AGENCY  
DEPARTMENT OF TRANSPORTATION

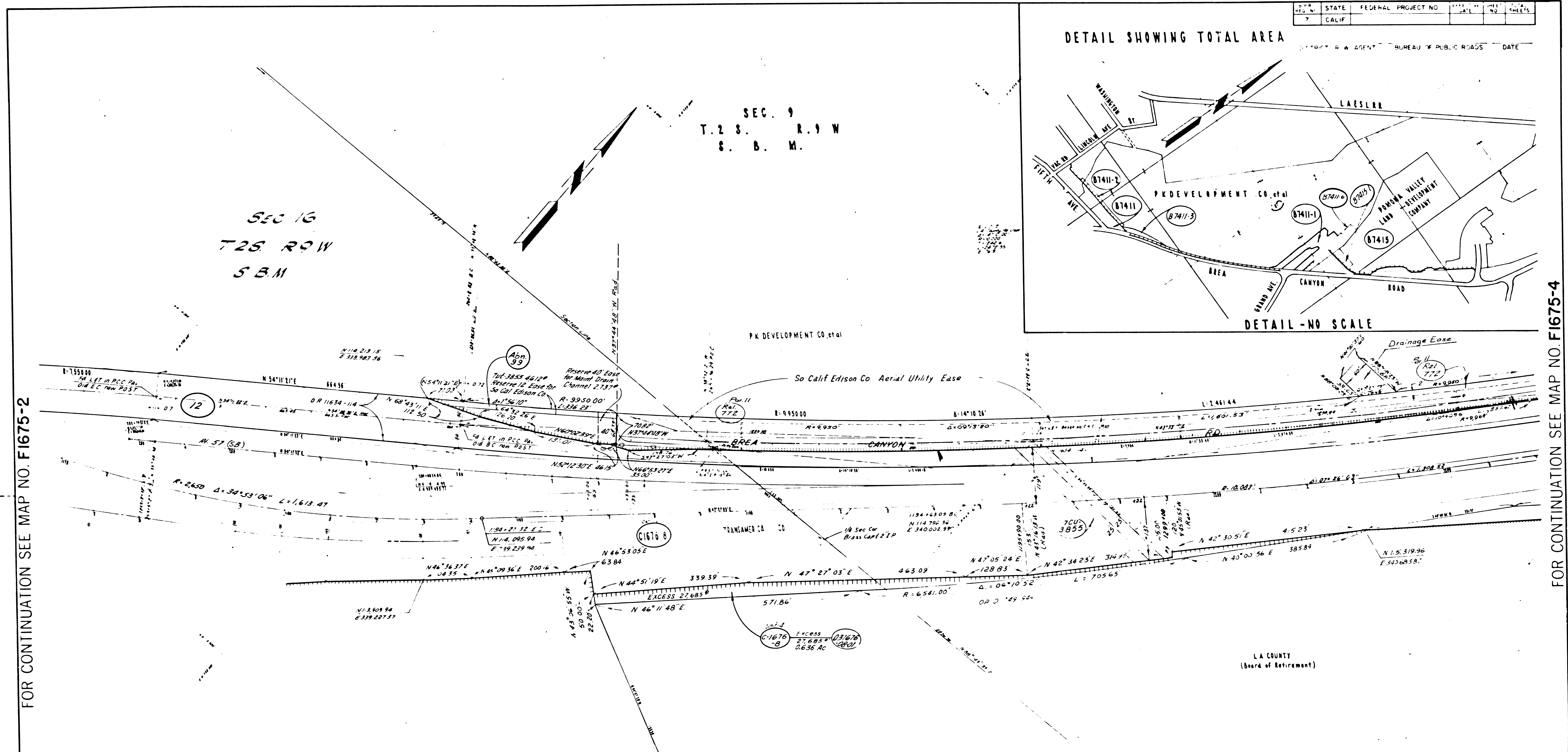
**R/W MAP**  
NO. F1675-2  
07-LA-60-PM.R23.2

100 0 100  
R/W PE SCHNEIDER SR FOLKINS

LEGEND:  
 - - - - - EXCESS DENIED  
 + EXCLUDES STREET AREA  
 \* AREA IN SQUARE FEET UNLESS OTHERWISE NOTED  
 ( ) PREVIOUS RECORD DATA

REPRINTED 10-11-74





FOR CONTINUATION SEE MAP NO. F1675-2

FOR CONTINUATION SEE MAP NO. F1675-4

PARCEL NO.	GRANTOR OR GRANTEE	AREA*		INST.	RECORDING DATA		PARCEL NO.	GRANTOR OR GRANTEE	AREA*		INST.	RECORDING DATA		PARCEL NO.	GRANTOR OR GRANTEE	AREA*		INST.	RECORDING DATA	
		TO BE ACQUIRED	EXCESS TOTAL		DATE	O. R.			TO BE ACQUIRED	EXCESS TOTAL		DATE	O. R.			TO BE ACQUIRED	EXCESS TOTAL		DATE	O. R.
12	UNIV. OF REDLANDS	See Map No. F 1675		-2																
68-B	UNIVERSITY CORP	See Map No. F1675			Fee	1228 65														
Rel 172	State to L.A. Co.				Rel	3-1-71														
7003855	So Calif Edison Co																			
Abn. 99	COUNTY OF L A				Abn	5-6-75														

ISSUE DATE  
6-22-72  
5-21-75

STATE OF CALIFORNIA  
BUSINESS & TRANSPORTATION AGENCY  
DEPARTMENT OF TRANSPORTATION

R/W MAP  
NO. F1675-3  
07-L.A.-60-PM.R237

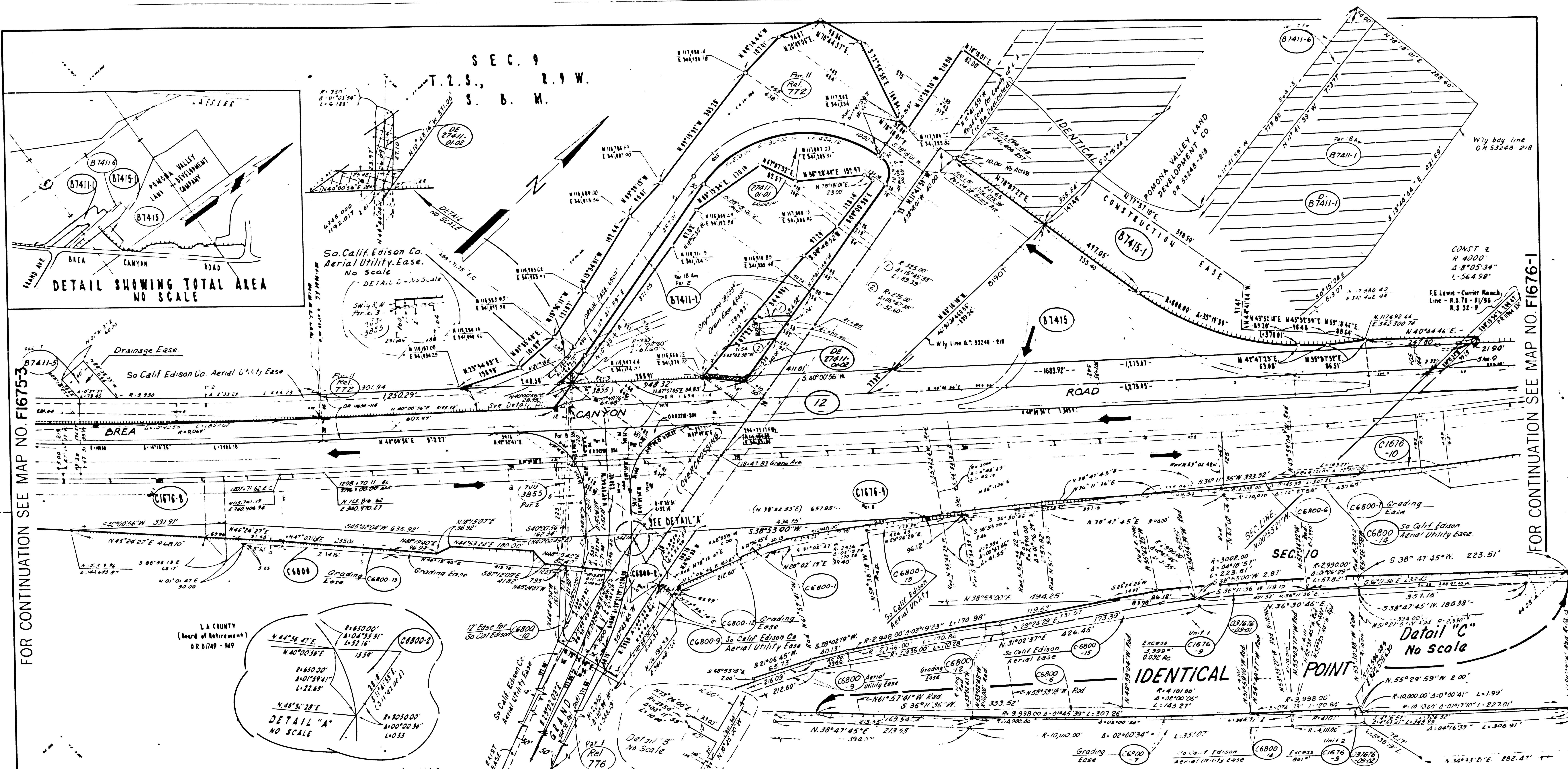
100 0 100  
R W P E SCHNEIDER SR FOLKINS

DATE 1-25-65

LEGEND:

REPRINTED 10-11-74





PARCEL NO.	GRANTOR OR GRANTEE	AREA*		INST.	RECORDING DATA	
		TO BE ACQUIRED	EXCESS TOTAL		DATE	O.R.
87411-1	VRAUSHAAR et al	609.241	56,021	Fee	9-30-70	04786-910
87415	POMONA VALLEY LAND DEVELOPMENT CO	12,280	98,541	Fee	7-30-70	04786-910
87415-1	POMONA VALLEY LAND DEVELOPMENT CO	8,932	CIVIL EASE	Fee	12-28-65	03157-986
C1676-8	TRANSAMERICA CO	See Map No. F1675-2		Fee	12-28-65	03157-986
C1676-9	TRANSAMERICA CO	474,172	52,389	Fee	12-28-65	03157-986
C1676-10	TRANSAMERICA CO	4006	178,178	Fee	12-28-65	03157-986
C6800	L.A. COUNTY	32,826	58.4	Fee		
C6800-1	L.A. COUNTY	28,789	111.4	Fee		
C6800-2	L.A. COUNTY	173	111.4	Fee		
12	UNIV. OF REDLANDS	See Map No. F1675-2		Fee		

PARCEL NO.	GRANTOR OR GRANTEE	AREA*		INST.	RECORDING DATA	
		TO BE ACQUIRED	EXCESS TOTAL		DATE	O.R.
C6800-12	L.A. County	18,524		Fee		
C6800-13	L.A. County	14,697		Fee		
C6800-14	See Map No. F1676-1	22,543		Fee		
C6800-15	L.A. County	3,878		Fee		
08701-1	Pomona Valley Land Devl Co			DD	7-30-70	04786-910
08701-2	SO CAL EDISON CO			DD	10-14-75	06832-238
87411-1	Kraushaar et al	91.8		Fee	1-7-69	2455-7-11
87411-6	VRAUSHAAR & PRICE	23,022	524,624	Cond	11-17-69	04557-11
87411-5	Kraushaar et al	91.8		Fee	1-7-69	2455-7-11
Rel 772	State to L.A. Co			Rel	3-1-71	03590-681609
Rel 775	So California Edison			JU	3-29-74	06217-757
Rel 776	State to County in Imp			Rel	7-31-74	06365-28163

PARCEL NO.	GRANTOR OR GRANTEE	AREA*		INST.	RECORDING DATA	
		TO BE ACQUIRED	EXCESS TOTAL		DATE	O.R.
C6800-16	L.A. County	1,100		Fee		
C6800-17	L.A. County	1,100		Fee		
C6800-18	L.A. County	1,100		Fee		
C6800-19	L.A. County	1,100		Fee		
C6800-20	L.A. County	1,100		Fee		
C6800-21	L.A. County	1,100		Fee		
C6800-22	L.A. County	1,100		Fee		
C6800-23	L.A. County	1,100		Fee		
C6800-24	L.A. County	1,100		Fee		
C6800-25	L.A. County	1,100		Fee		
C6800-26	L.A. County	1,100		Fee		
C6800-27	L.A. County	1,100		Fee		
C6800-28	L.A. County	1,100		Fee		
C6800-29	L.A. County	1,100		Fee		
C6800-30	L.A. County	1,100		Fee		
C6800-31	L.A. County	1,100		Fee		
C6800-32	L.A. County	1,100		Fee		
C6800-33	L.A. County	1,100		Fee		
C6800-34	L.A. County	1,100		Fee		
C6800-35	L.A. County	1,100		Fee		
C6800-36	L.A. County	1,100		Fee		
C6800-37	L.A. County	1,100		Fee		
C6800-38	L.A. County	1,100		Fee		
C6800-39	L.A. County	1,100		Fee		
C6800-40	L.A. County	1,100		Fee		
C6800-41	L.A. County	1,100		Fee		
C6800-42	L.A. County	1,100		Fee		
C6800-43	L.A. County	1,100		Fee		
C6800-44	L.A. County	1,100		Fee		
C6800-45	L.A. County	1,100		Fee		
C6800-46	L.A. County	1,100		Fee		
C6800-47	L.A. County	1,100		Fee		
C6800-48	L.A. County	1,100		Fee		
C6800-49	L.A. County	1,100		Fee		
C6800-50	L.A. County	1,100		Fee		
C6800-51	L.A. County	1,100		Fee		
C6800-52	L.A. County	1,100		Fee		
C6800-53	L.A. County	1,100		Fee		
C6800-54	L.A. County	1,100		Fee		
C6800-55	L.A. County	1,100		Fee		
C6800-56	L.A. County	1,100		Fee		
C6800-57	L.A. County	1,100		Fee		
C6800-58	L.A. County	1,100		Fee		
C6800-59	L.A. County	1,100		Fee		
C6800-60	L.A. County	1,100		Fee		
C6800-61	L.A. County	1,100		Fee		
C6800-62	L.A. County	1,100		Fee		
C6800-63	L.A. County	1,100		Fee		
C6800-64	L.A. County	1,100		Fee		
C6800-65	L.A. County	1,100		Fee		
C6800-66	L.A. County	1,100		Fee		
C6800-67	L.A. County	1,100		Fee		
C6800-68	L.A. County	1,100		Fee		
C6800-69	L.A. County	1,100		Fee		
C6800-70	L.A. County	1,100		Fee		
C6800-71	L.A. County	1,100		Fee		
C6800-72	L.A. County	1,100		Fee		
C6800-73	L.A. County	1,100		Fee		
C6800-74	L.A. County	1,100		Fee		
C6800-75	L.A. County	1,100		Fee		
C6800-76	L.A. County	1,100		Fee		
C6800-77	L.A. County	1,100		Fee		
C6800-78	L.A. County	1,100		Fee		
C6800-79	L.A. County	1,100		Fee		
C6800-80	L.A. County	1,100		Fee		

ISSUE DATE  
6-21-72  
5-21-75

STATE OF CALIFORNIA  
BUSINESS & TRANSPORTATION AGENCY  
DEPARTMENT OF TRANSPORTATION

R/W MAP  
NO. F1675-4  
07-L.A.-60-PM.R.24.4

100 0 100  
RW PE SCHNEIDER DATE 1-25-65  
SR FOLKINS

LEGEND:  
 [Symbol] EXCLUDES STREET AREA  
 [Symbol] AREA IN SQUARE FEET, UNLESS OTHERWISE NOTED  
 [Symbol] AREA IN SQUARE FEET, UNLESS OTHERWISE NOTED