

FOR CONTINUATION SEE MAP NO. F1675-4

FOR CONTINUATION SEE MAP NO. F1676-2

PARCEL NO.	GRANTOR OR GRANTEE	AREA*			INST.	RECORDING DATA		PARCEL NO.	GRANTOR OR GRANTEE	AREA*			INST.	RECORDING DATA		PARCEL NO.	GRANTOR OR GRANTEE	AREA*			INST.	RECORDING DATA	
		TO BE ACQ.	EXCESS	TOTAL		DATE	O.R.			TO BE ACQ.	EXCESS	TOTAL		DATE	O.R.			TO BE ACQ.	EXCESS	TOTAL		DATE	O.R.
87418	MONA VALLEY, INC.																						
6800-4	L.A. COUNTY	9.985		111.42	Fee																		
6800-4	R. A. Watt, Co., Inc.	4.028	Temp	37.40	Expires June 16, 1970																		
1	Lewis				Fee 6-17-32	1/638	222																
6876-7	TRANSAMERICA CO.	645.764		845.764	Fee 2-28-65	235	980																
6876-9	TRANSAMERICA CO.	See Map to F1675-4			Fee 2-28-65	235	980																
68800-7	L.A. COUNTY	21.568		117.40	Fee																		
68800-14	L.A. County				Fee																		
Rel 772	State to L.A. Co.				Rel 3-1-71	239000	100																
ABD-92	State to L.A. Co.				Rel 12-28-73	24377	100																

ISSUE DATE  
2-8-74  
5-23-75

STATE OF CALIFORNIA  
BUSINESS & TRANSPORTATION AGENCY  
DEPARTMENT OF TRANSPORTATION

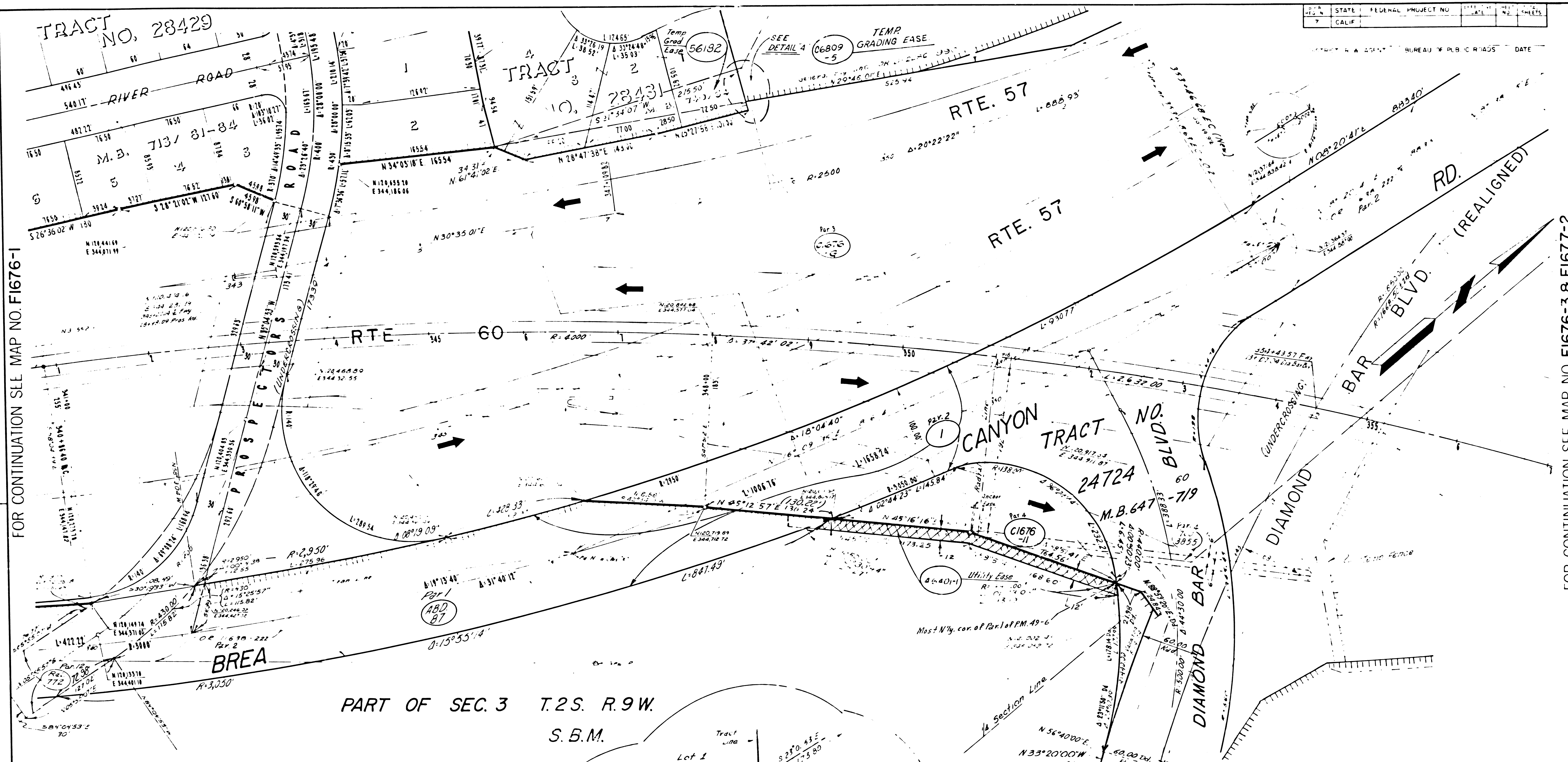
**R/W MAP**  
NO. F1676-1  
07-L.A.-60-PM. R249

100 0 100  
R.W.F.E. SCHNEIDER DATE 1-25-65  
SR FOLKINS

LEGEND:

REPRINTED 10-9-74

STATE	FEDERAL PROJECT NO.	DATE	SHEETS
CALIF.			

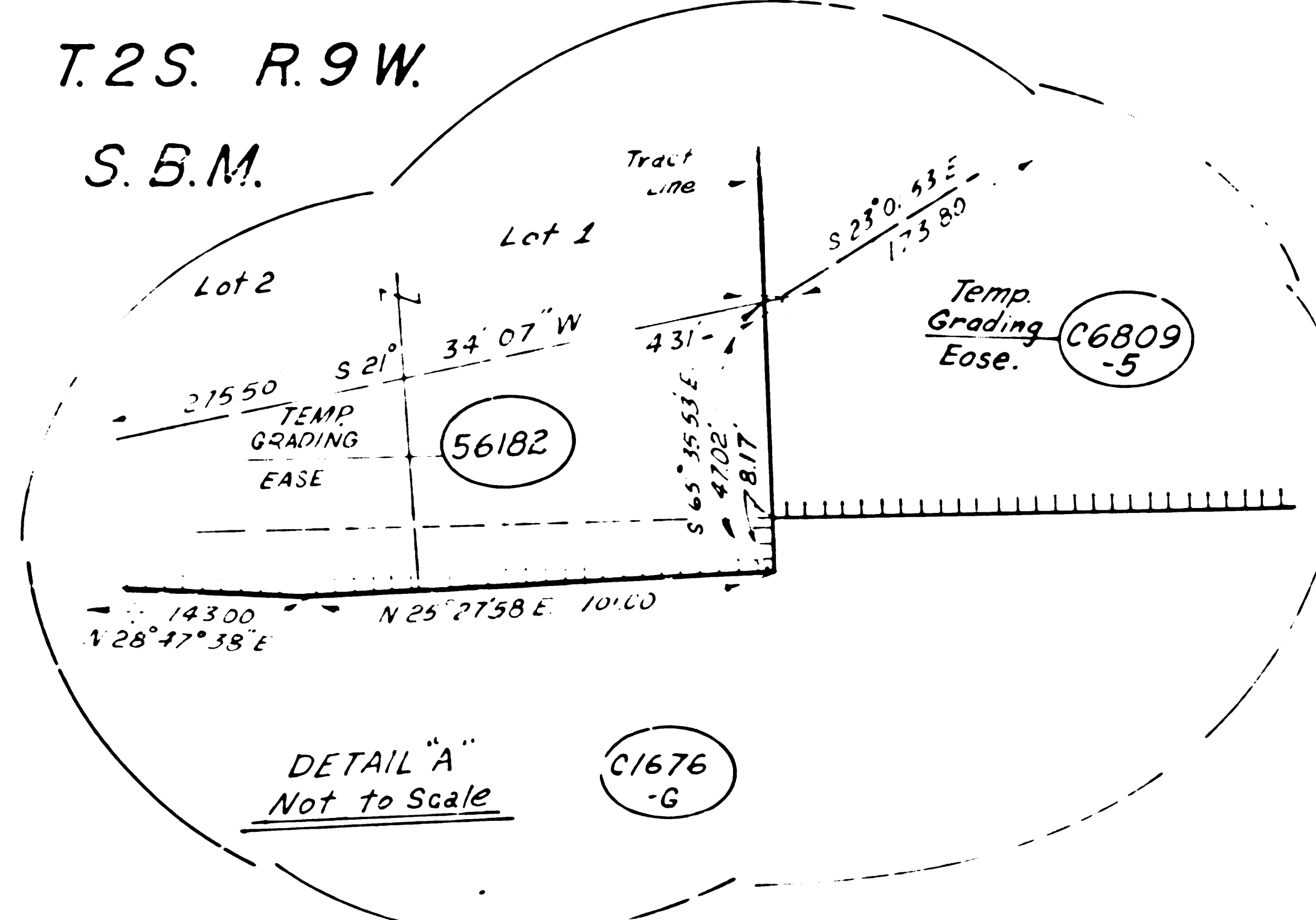


FOR CONTINUATION SEE MAP NO. F1676-1

FOR CONTINUATION SEE MAP NO. F1676-3 & F1677-2

PART OF SEC. 3 T.2S. R.9W.  
S.B.M.

PARCEL NO.	GRANTOR OR GRANTEE	TO BE ACQUIRED	AREA* EXCESS TOTAL	INST. DATE	RECORDING DATA O.R.
676-11	Trans Amer Develop			Fee	6/17/66 D3338-005
44401-1	So Cal Edison Co	3941	Utility EASE	12-4-67	D3847-588
56182	R Sebring Const Co	9,144	Temp Grading EASE		
44172	Shute to LA Co			Fee	3-1-71 D3990-687-069
44087	In Co of LA			Fee	5-30-72 D3476-222825
7621855	So. Calif. Edison			Fee	3-29-74 T.2S. R.9W. S.B.M.
1	Lewis				See Map F1676-1



ISSUE DATE	STATE OF CALIFORNIA
12/18/65	BUSINESS & TRANSPORTATION AGENCY
11-15-74	DEPARTMENT OF TRANSPORTATION
5-23-75	
	<b>R/W MAP</b>
	NO. F1676-2
	07-L.A.-60-P.M. R25.4
	DATE 12-1-65
	RW PE SCHNEIDER SR FOLKINS

LEGEND: ( ) FTE (FWY & TRANSPORT EASE)

F.M. 21621-2

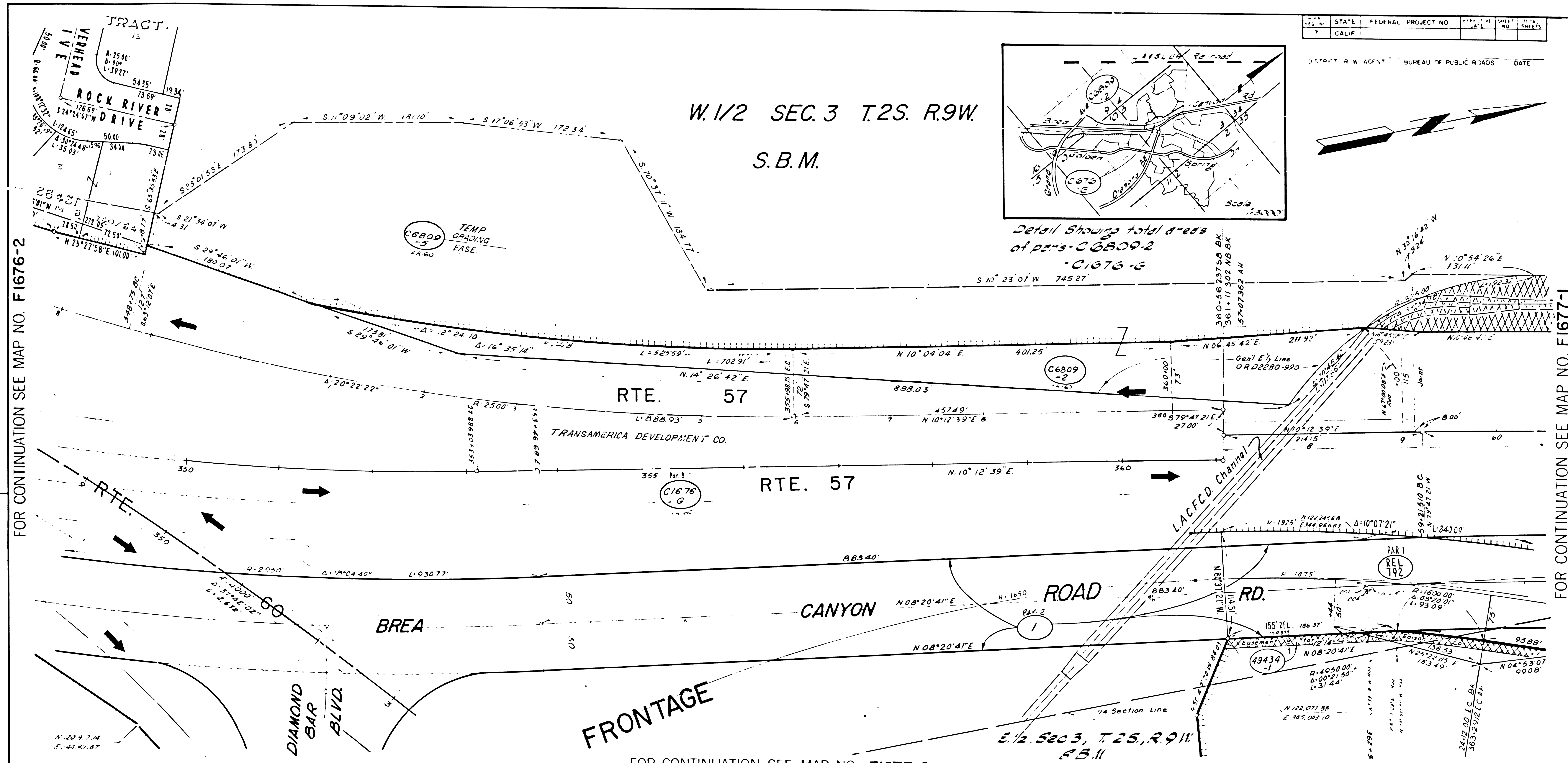
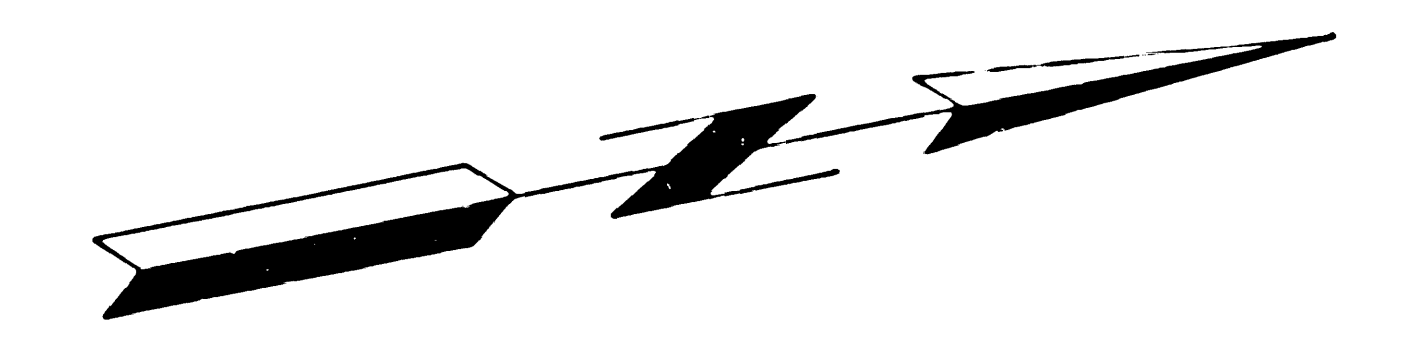
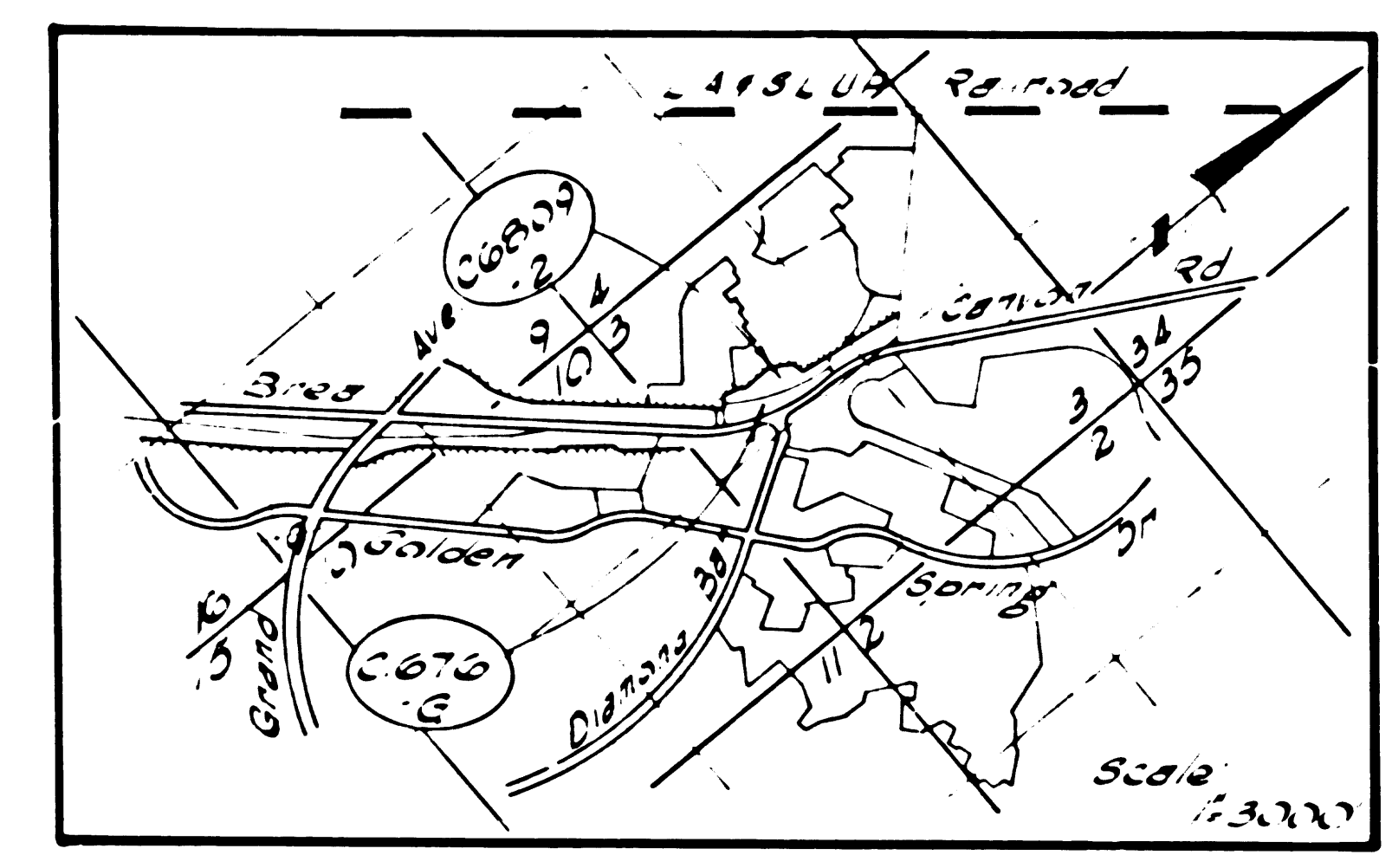
16682-C

REPRINTED 10-9-74

STATE	FEDERAL PROJECT NO.	SHEET NO.	TOTAL SHEETS
CALIF.		7	10

DISTRICT R/W AGENT BUREAU OF PUBLIC ROADS DATE

W. 1/2 SEC. 3 T. 2S. R. 9W.  
S.B.M.



FOR CONTINUATION SEE MAP NO. F1676-2

FOR CONTINUATION SEE MAP NO. F1677-1

FOR CONTINUATION SEE MAP NO. F1677-2

PARCEL NO.	GRANTOR OR GRANTEE	AREA*			INST.	RECORDING DATA		PARCEL NO.	GRANTOR OR GRANTEE	AREA*			INST.	RECORDING DATA		PARCEL NO.	GRANTOR OR GRANTEE	AREA*			INST.	RECORDING DATA	
		TO BE ACQUIRED	EXCESS	TOTAL		DATE	O.R.			TO BE ACQUIRED	EXCESS	TOTAL		DATE	O.R.			TO BE ACQUIRED	EXCESS	TOTAL		DATE	O.R.
C1676-1	Trans Amer. Develop				Fee	6-17-66	0-338-609																
C6809-5	R. J. Hill Co., Inc.	50	885	935	Grading Estm.	Expires June 1, 1970																	
1	Lewis																						
C6839	R. J. Hill Co., Inc.	49210		137Act	Fee	7-22-70	0-4779-171																
49434-1	See Map No. F1671-2																						
REL-792	COUNTY OF L.A.					REL	2-26-72	R4104-1															

ISSUE DATE  
12-18-68  
5-23-75

STATE OF CALIFORNIA  
BUSINESS & TRANSPORTATION AGENCY  
DEPARTMENT OF TRANSPORTATION

R/W MAP  
NO. F1676-3  
07-LA-60-PM. R 256

R/W P.E. SCHNEIDER  
SR. FOLKINS

DATE 12-1-65

LEGEND: ( ) F.T.E. (FWY B TRANSPORT EASE)

FM. 21621-3

REPRINTED 10-9-74