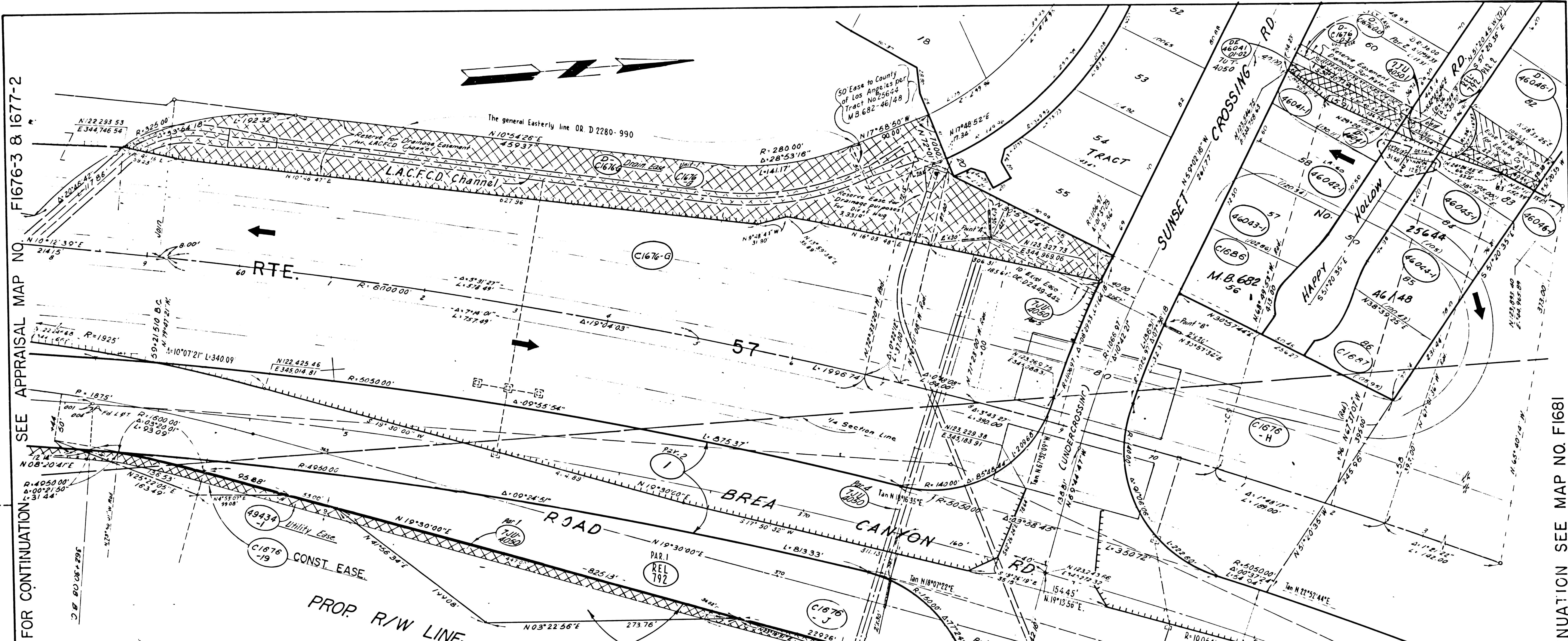
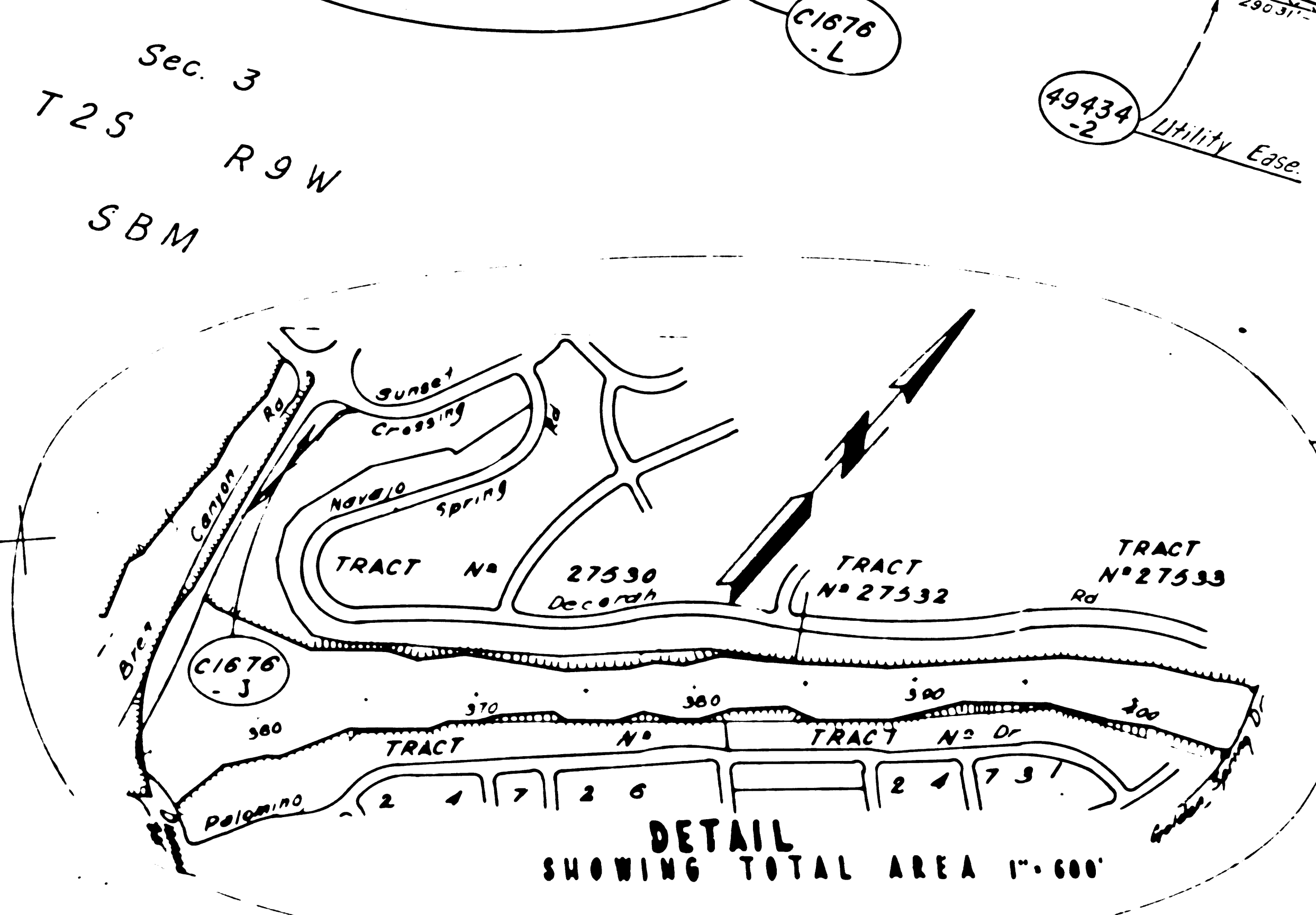


SEE APPRAISAL MAP NO. F1676-3 & 1677-2 FOR CONTINUATION



FOR CONTINUATION SEE MAP NO. F1681

PARCEL NO.	GRANTOR OR GRANTEE	ACRES	EXCESS	TOTAL	RECORDING DATA
C1676-B	TRANS AMER DEVELOP CO	795.471	66.716	795.471	Fee 6-17-66 D3338-605
C1676-M	TRANS AMER DEVELOP CO	54.731		795.471	
C1676-J	TRANS AMER DEVELOP CO	50.101		61,040 AC	
C1676-19	TRANS AMER DEVELOP CO	3,270	CONST	EASE	
C1676-L	TRANS AMER DEVELOP CO	16,986		61,040 AC	Fee 6-7-66 D3338-605
C1676-21	TRANS AMER DEVELOP CO	2,787	CONST	EASE	
C1686	J O SCARBOROUGH	6,080		6,080	Fee 5-14-66 D3785-733
C1687	F M JUSTICE	6,183		6,183	Fee 4-26-66 D3787-71
D-46046-1	GOEBEL				D.D. 9-14-73 D6019-264
46041-1	M I KLUMP, et ux	9,414	4,993	9,414	Fee 6-29-67 D3687-411
46042-1	GA PAGAN, et ux	9,178		9,178	Fee 6-28-67 D3687-794
46043-1	FED SAV LOAN ASSOC	8,032		8,032	Fee 6-6-67 D3643-3
46044-1	P M TAN, et ux	8,147		8,147	Fee 6-26-67 D3682-793
46045-1	P L MIGNOT, et ux	8,001		8,001	Fee 6-5-67 D3661-523
46046-1	J A SWEENEY, et ux	8,001	4,003	8,001	Fee 6-1-67 D3658-389
D-C1676	State to Diamond Bar Water Co				DD 5-4-68 D3900-294
D-C1676	State to Diamond Bar Water Co				DD 6-2-69 D4000-116
49434-1	So Calif Edison Co	4,415			Fee 6-17-72 D1638-222
49434-2	So Calif Edison Co	2,727			Ease 10-19-70 D4064-340
D-C1676	State to L.A.C.F.C.D.				DD 1-13-72 D5315-687
D-46047	Melnick				DD 3-7-72 D5558-504
DE46047-01-02	So. Cal. Edison Co				DD 3-14-75 D6586-895
REL-792	COUNTY OF L.A.				REL 12-26-72 R4104-11
77114000	So. Cal. Edison				JU 8-17-72 D5871-725
77114000	So. Cal. Edison				JU 11-2-72 M4198-353



DETAIL SHOWING TOTAL AREA 1"=600'

REVISION DATES		STATE OF CALIFORNIA	
BY	DATE	BY	DATE
Y.B.	12-1-55		
Y.B.	1-10-56		
-3 REV KS	12-19-66		
CYT	8-13-68		
CKW	4-4-72		
R.G.	5-23-75		

TRANSPORTATION AGENCY DEPARTMENT OF PUBLIC WORKS

DIVISION OF HIGHWAYS

07 LA 60-1253

R/W MAP

WEST OF SUNSET CROSSING ROAD

SCALE 1"=50'

DRAFT Y. BERSON

RWPE E. BURN (375)

FILE NO F1677-1

DATE 11-11-55

APPROVED E. BURN (375)

LEGEND: ACCESS DENIAL LINE TOP OF CUT TOE OF FILL

* UNLESS OTHERWISE NOTED ALL AREAS ARE IN SQUARE FEET

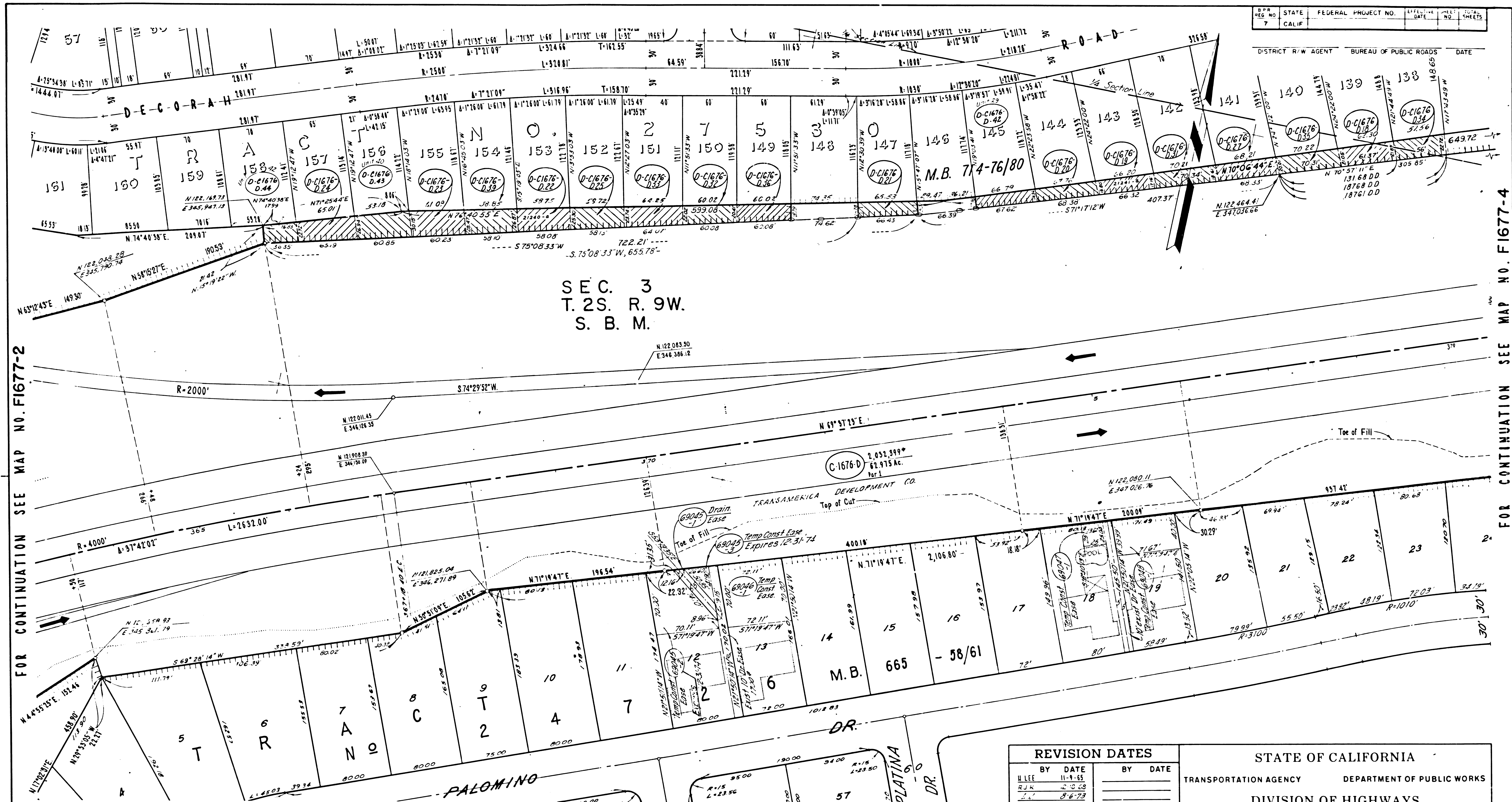
IF MORE THAN ONE BEARING AND DISTANCE ARE SHOWN FOR A LINE, THE ONE IN PARENTHESES IS PREVIOUS RECORD

Rw = DESIGN CHANGE

At = R/W CHANGE

F.M. 21622-1

F-1676-2 16654-C



FOR CONTINUATION SEE MAP NO. F1677-2

FOR CONTINUATION SEE MAP NO. F1677-4

PARCEL NO.	GRANTOR OR GRANTEE	TO ACQ. REG.	AREA EXCESS TOTAL	INST. DATE	RECORDING DATA DATE O.R.	PARCEL NO.	GRANTOR OR GRANTEE	TO ACQ. REG.	AREA EXCESS TOTAL	INST. DATE	RECORDING DATA DATE O.R.	PARCEL NO.	GRANTOR OR GRANTEE	TO ACQ. REG.	AREA EXCESS TOTAL	INST. DATE	RECORDING DATA DATE O.R.				
D-1676-024	St to V.J. Bowling Jr et ux			DD	4-9-70	04681-175,707	D-1676-019	St to J.B. Tilo Jr, et ux		DD	4-8-70	04680-202,234	69045-1	Sparr	624		13,779	Ex	9-27-74	06394-58	
D-1676-023	St to R.P. Mog			DD	4-9-70	04681-806,78	D-1676-021	St to L.S. Carpenter et ux		DD	4-9-70	04681-701,89	69045-2	"	3,719		"	"	"	"	
D-1676-022	St to A.D. Gerard et ux			DD	4-17-70	04688-806,78	D-1676-020	St to W.J. Jennings, et ux		DD	4-9-70	04681-701,23	69045-3	"	556		"	"	"	"	
D-1676-021	St to N. Sclar, et ux			DD	4-30-70	04700-390,12	D-1676-018	St to R.A. Schneider, et ux		DD	4-8-70	04680-211,25	69046-1	Steinmann	5,039		12,097	Ex	"	"	
D-1676-020	St to J.J. Jostan, et ux			DD	4-9-70	04681-718,300	D-1676-017	St to G.H. Jensen, et ux		DD	4-9-70	04681-701,89	69047-1	Thrasher	607		11,818	Ex	"	"	
D-1676-019	St to T.H. Standard et ux			DD	4-8-70	04680-208,10	D-1676-016	St to G.E. Camp, et ux		DD	4-17-70	04688-883,45	69048-1	Lloyd	2,858		10,290	Ex	"	"	
D-1676-018	St to F.G. Morton Jr et ux			DD	4-9-70	04680-205,7	C-1676-D	Transamerica Dev. Co		Ex	6-17-66	03338-605									
D-1676-017	St to W.F. Duncan et ux			DD	4-9-70	04681-700,12	D-1676-015	St to W. Medici, et ux		DD	11-3-70	04902-118,70									
D-1676-016	St to N. Vengraf et ux			DD	4-9-70	04681-803,45	D-1676-014	St to M.J. Katzen et ux		DD	11-30-70	04902-117									
D-1676-015	St to E. Perluss et ux			DD	4-9-70	04681-800,12	D-1676-013	St to A.C. Farmer et ux		DD	12-14-70	04915-917									

REVISION DATES	
BY	DATE
W. Lee	11-9-65
R.J.K.	2-10-68
L.L.	8-6-73
	8-20-73

STATE OF CALIFORNIA
 TRANSPORTATION AGENCY DEPARTMENT OF PUBLIC WORKS
 DIVISION OF HIGHWAYS
 07 LA-60-R25.8
APPRAISAL MAP
 EAST OF BREA CANYON ROAD

SCALE 1" = 50'
 DRAFT R.H. MacLean
 RWPE G. Lev

FILE NO. **F1677-3**
 DATE 8-6-75
 APPROVED C. Massey

LEGEND: ACCESS DENIAL LINE TOP OF CUT TOE OF FILL
 * UNLESS OTHERWISE NOTED ALL AREAS ARE IN SQUARE FEET
 IF MORE THAN ONE BEARING AND DISTANCE ARE SHOWN FOR A LINE,
 THE ONE IN PARENTHESES IS PREVIOUS RECORD
 Rev. = DESIGN CHANGE
 AII = R/W CHANGE

F.M. 21622-3 F1677-16291-C

