

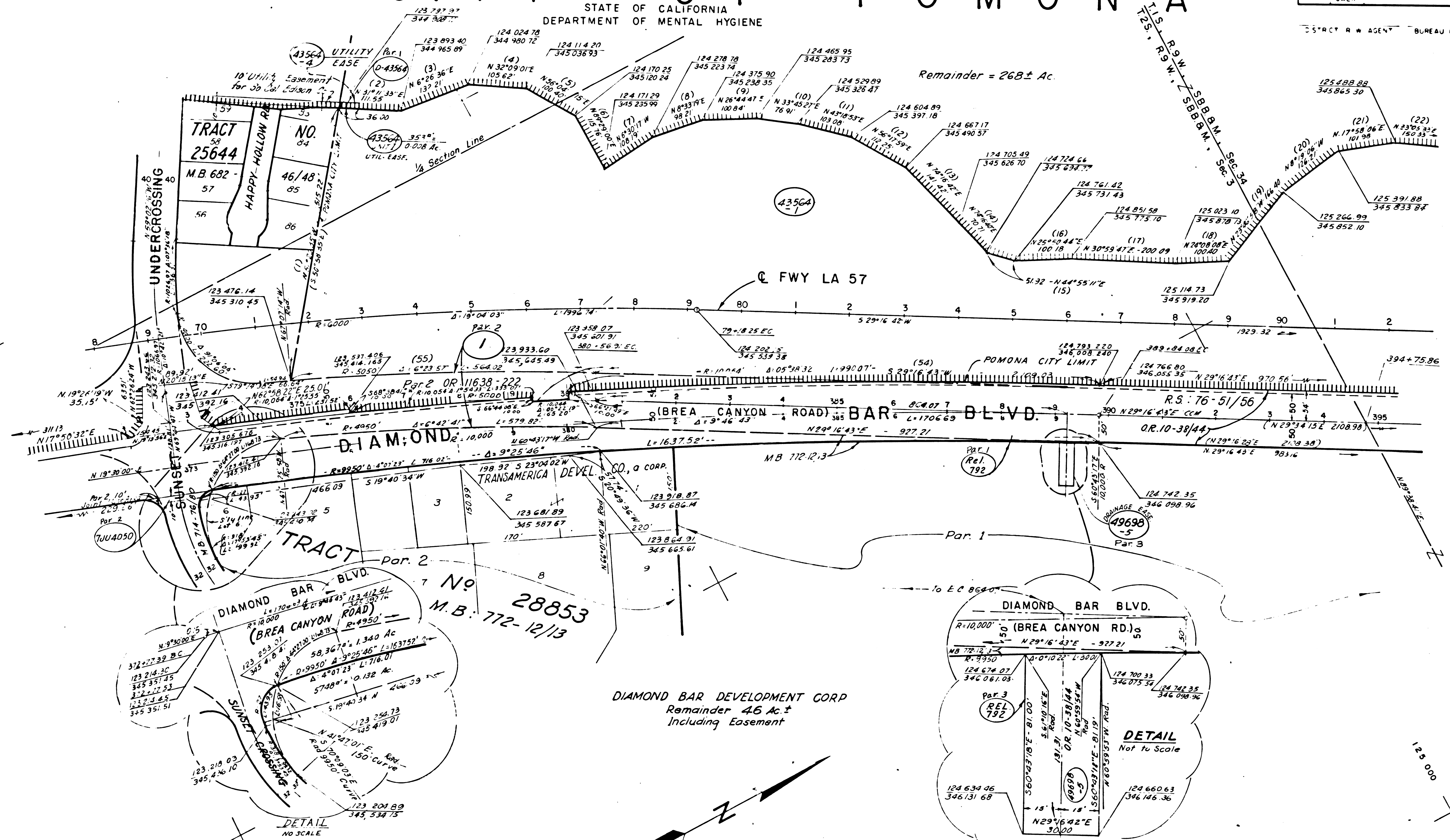
CITY OF POMONA

STATE OF CALIFORNIA
DEPARTMENT OF MENTAL HYGIENE

STATE	FEDERAL PROJECT NO.	DATE	SHEET
CALIF.			32

FOR CONTINUATION SEE MAP NO. F-1677-1

FOR CONTINUATION SEE MAP NO. F-1682-1

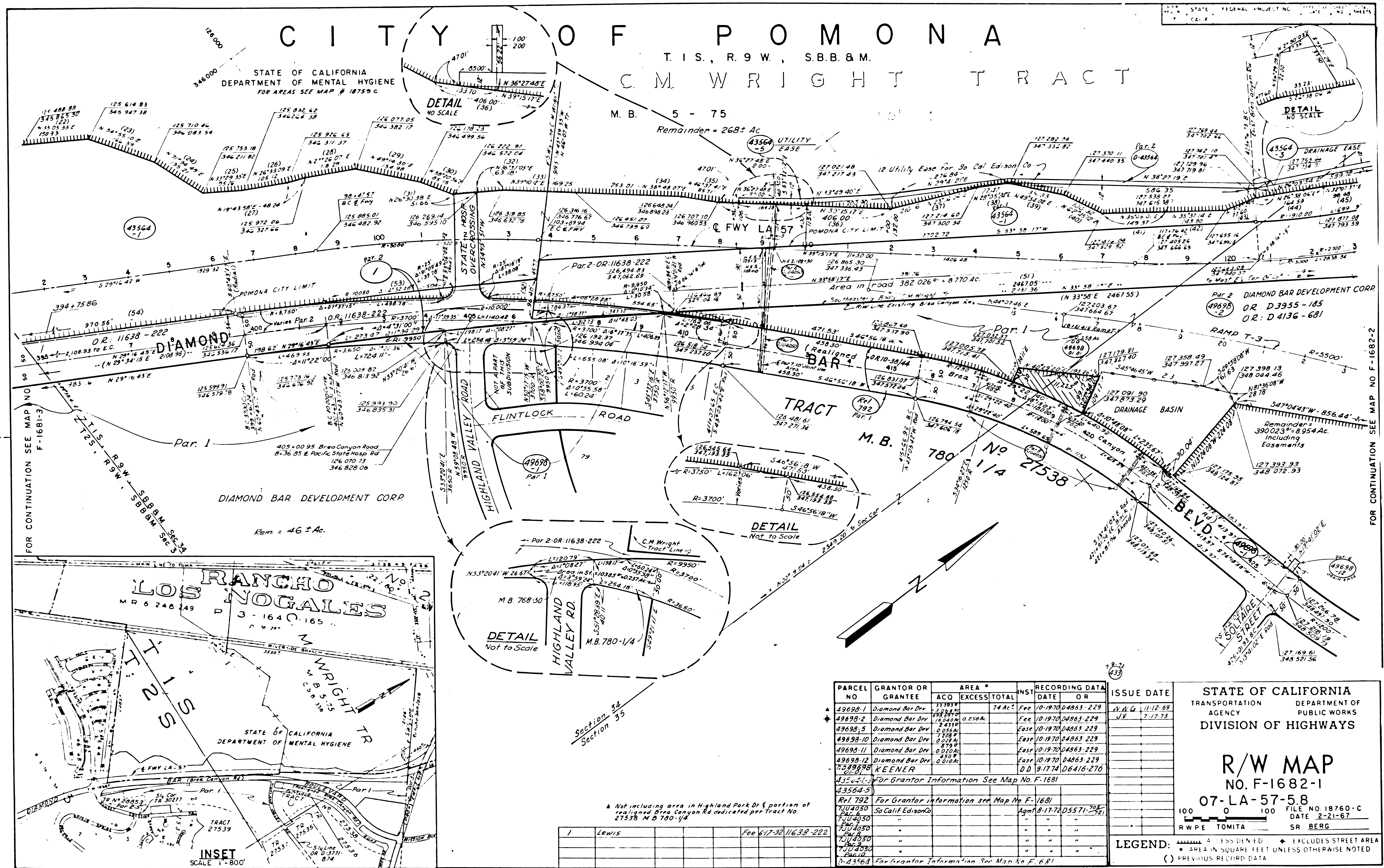


PARCEL NO.	GRANTOR OR GRANTEE	AREA		INS.	RECORDING DATA		
		ACO	EXCESS TOTAL		DATE	OR	
43564-1	Dept. of Mental Hygiene	0.1394	Ac	298	65	Ac	12-10-71 D5284-613
43564-3	Dept. of Mental Hygiene	0.019	Ac	East			12-10-71 D5284-613
43564-4	Dept. of Mental Hygiene	0.008	Ac	East			12-10-71 D5284-613
43564-5	Dept. of Mental Hygiene	0.502	Ac	East			12-10-71 D5284-613
D-43564	St. Jo. Co. Edison			120	0	Ac	5-18-73 D5877-99
49698	For Grantor information see Map No.						F-1682-1
TU4050	Parcels 12, 34, 53						For Grantor information see Map No. F1681-2
Reg. 792	Co. of Los Angeles						12-24-72 R4104-1112
Reg. 792	For Grantor information see Map No.						F-1681-2
1	Lewis						Fee 61730/11638-222

ISSUE DATE	STATE OF CALIFORNIA	
J.V. 2-22-73	TRANSPORTATION AGENCY	DEPARTMENT OF PUBLIC WORKS
R.S. 5-23-75	DIVISION OF HIGHWAYS	
R/W MAP		
NO. F-1681		
07-LA-57-5.3		
100	0	100
FILE NO. 18759-C		DATE 2-21-87
RWPE IOMITA		SR BERG

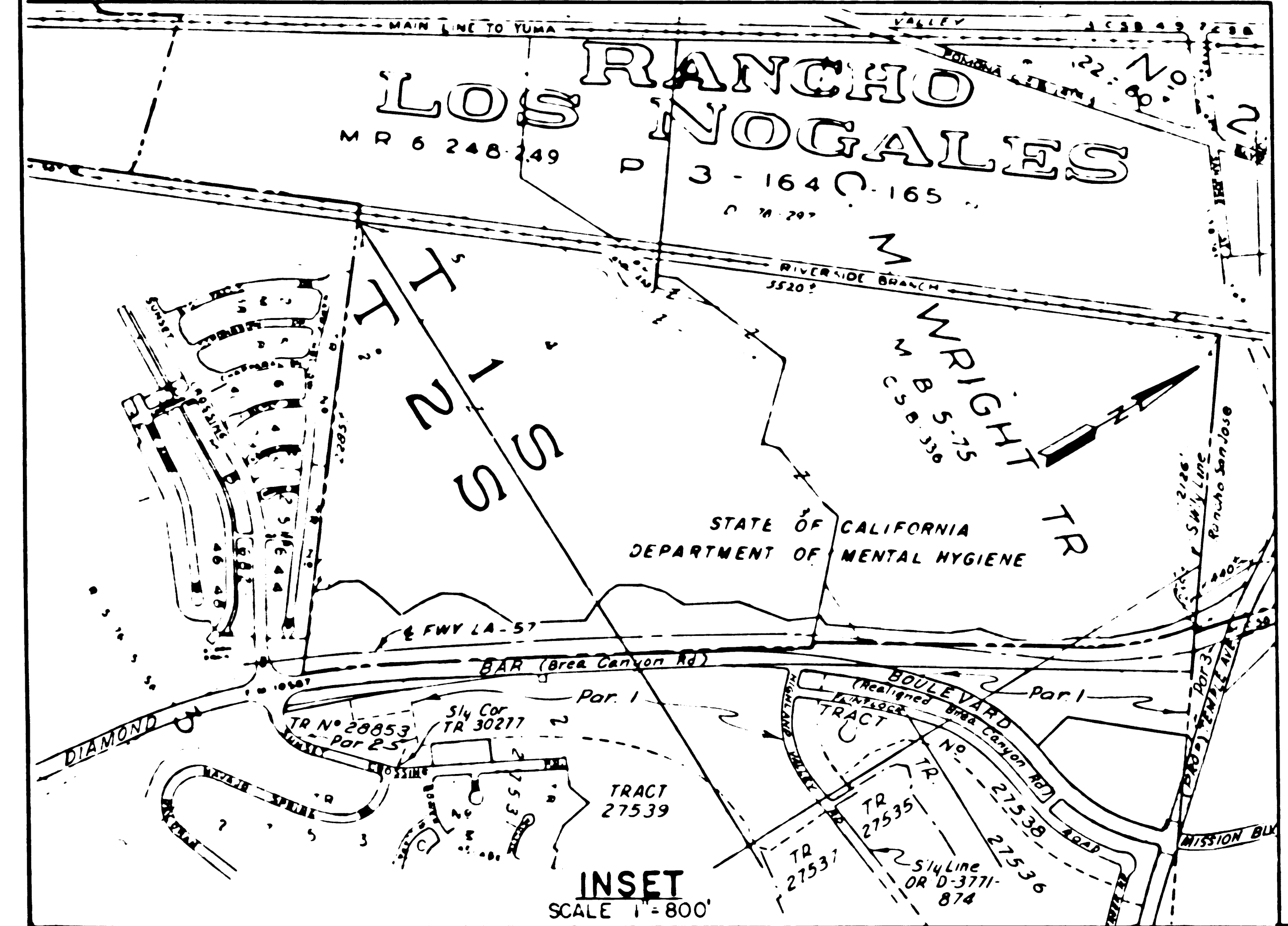
LEGEND: ACCESS DENIED EXCLUDES STREET AREA
 AREA IN SQUARE FEET UNLESS OTHERWISE NOTED
 PREVIOUS RECORD DATA

F.M. 21623-1



FOR CONTINUATION SEE MAP NO. F-1681-3

FOR CONTINUATION SEE MAP NO. F-1682-2



PARCEL NO.	GRANTOR OR GRANTEE	ACQ.	EXCESS	TOTAL	NSI	RECORDING DATA	ISSUE DATE
						DATE OR	
49698-1	Diamond Bar Dev	33993		74 Ac	Fee	10-19-70 04863-229	11-12-69
49698-2	Diamond Bar Dev	19889	0.258 Ac		Fee	10-19-70 04863-229	7-17-73
49698-5	Diamond Bar Dev	8439			Ease	10-19-70 04863-229	
49698-10	Diamond Bar Dev	1058			Ease	10-19-70 04863-229	
49698-11	Diamond Bar Dev	0258 Ac			Ease	10-19-70 04863-229	
49698-12	Diamond Bar Dev	0258 Ac			Ease	10-19-70 04863-229	
72-29998	KEENER	858			D D	9-17-74 06416-276	
43564-1	For Grantor Information See Map No. F-1681						
43564-5	For Grantor information see Map No. F-1681						
Rel 792	So Calif Edison Co	33993			Agmt	8-17-74 05571-792	
43564-3							
43564-4							
43564-6							
43564-7							
43564-8							
43564-9							
43564-10							
43564-11							
43564-12							
43564-13							
43564-14							
43564-15							
43564-16							
43564-17							
43564-18							
43564-19							
43564-20							
43564-21							
43564-22							
43564-23							
43564-24							
43564-25							
43564-26							
43564-27							
43564-28							
43564-29							
43564-30							
43564-31							
43564-32							
43564-33							
43564-34							
43564-35							
43564-36							
43564-37							
43564-38							
43564-39							
43564-40							
43564-41							
43564-42							
43564-43							
43564-44							
43564-45							
43564-46							
43564-47							
43564-48							
43564-49							
43564-50							
43564-51							
43564-52							
43564-53							
43564-54							
43564-55							
43564-56							
43564-57							
43564-58							
43564-59							
43564-60							
43564-61							
43564-62							
43564-63							
43564-64							
43564-65							
43564-66							
43564-67							
43564-68							
43564-69							
43564-70							
43564-71							
43564-72							
43564-73							
43564-74							
43564-75							
43564-76							
43564-77							
43564-78							
43564-79							
43564-80							
43564-81							
43564-82							
43564-83							
43564-84							
43564-85							
43564-86							
43564-87							
43564-88							
43564-89							
43564-90							
43564-91							
43564-92							
43564-93							
43564-94							
43564-95							
43564-96							
43564-97							
43564-98							
43564-99							
43564-100							

STATE OF CALIFORNIA
TRANSPORTATION DEPARTMENT OF
AGENCY PUBLIC WORKS
DIVISION OF HIGHWAYS

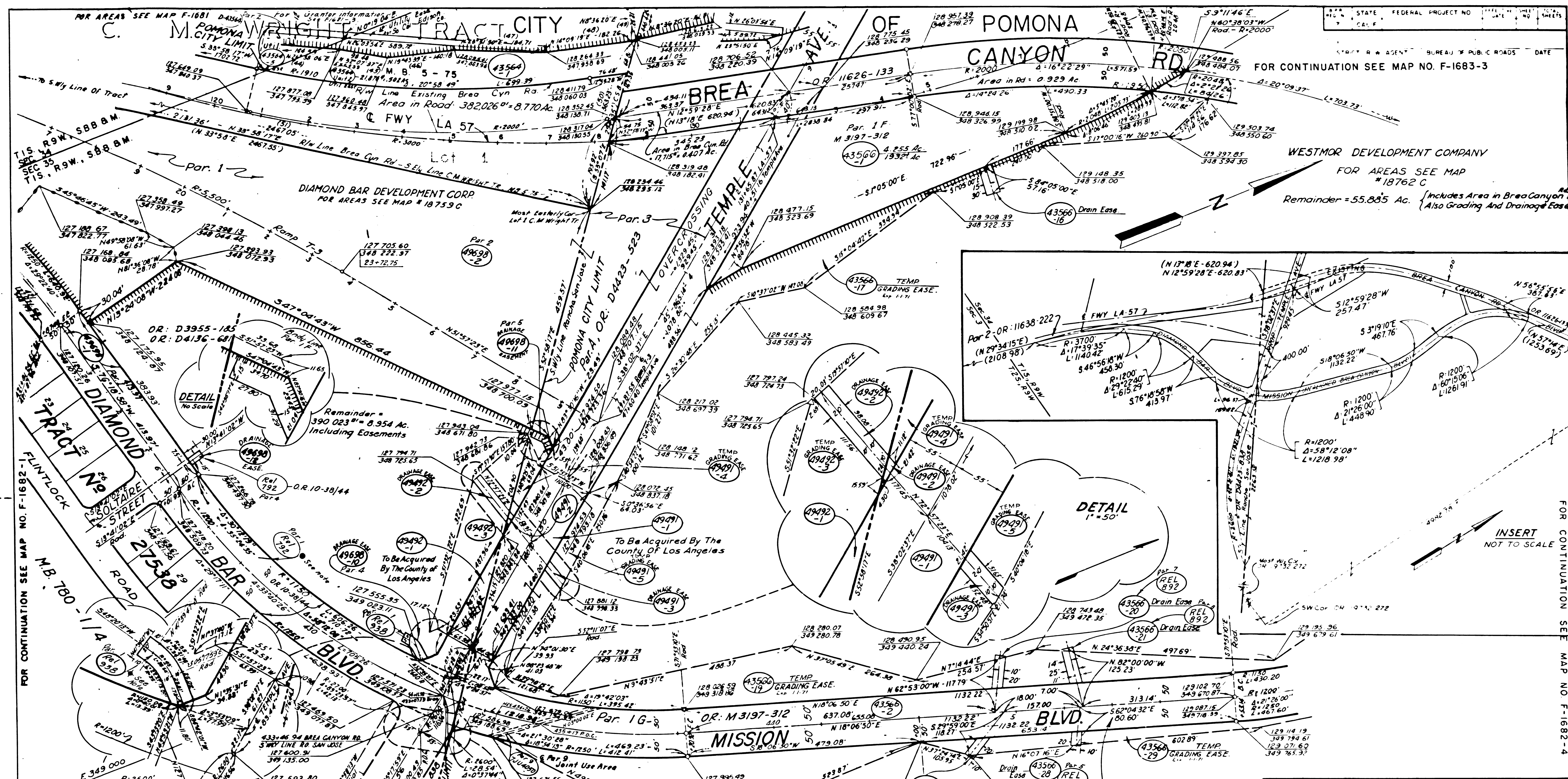
R/W MAP
NO. F-1682-1
07-LA-57-58

FILE NO. 18760-C
DATE 2-21-67
RWPE TOMITA SR BERG

LEGEND:

- ▲ AREA DENIED
- ◆ EXCLUDES STREET AREA
- AREA IN SQUARE FEET UNLESS OTHERWISE NOTED
- () PREVIOUS RECORD DATA

FM. 21623-2



PARCEL NO.	GRANTOR OR GRANTEE	TO ACQUIRE	EXCESS	TOTAL	INST.	RECORDING DATE	O. R.
49491-1	Westmor Dev. Co.	35,834		1975 Ac Fee			
49491-2	"	154		Drainage Easement			
49491-3	"	1,041					
49491-4	"	3,985		Grading Easement			
49491-5	"	19,092					
49492-1	Diamond Bar Dev. Co.	5,166		74 Ac Fee			
49492-2	"	2,097		Drainage Easement			
49492-3	"	29,182		Grading Easement			
61315	Westmor Dev. Co.	7,483		2000 Ac Fee			
43564	For Grantor information see Map No. F-1681 Parcels 1, 3, 4, 5						
49691	For Grantor information see Map No. F-1682 Parcels 1, 2, 5, 10, 11, 12						
43566	For Grantor information see Map No. F-1682-2						
43566	For Grantor information see Map No. F-1682-1						

RANCHO JOSE SAN

P. 2 - 292 / 293

PARCEL NO.	GRANTOR OR GRANTEE	ACQ.	AREA	EXCESS	TOTAL	INST.	RECORDING DATE	O. R.
REL 892	City of Pomona	Part 1	5,47.8			Rel.	7-1-75	R4750-51
REL 938	See F-1682-3							
REL 792	See F-1681-3							

ISSUE DATE

STATE OF CALIFORNIA
TRANSPORTATION DEPARTMENT OF
AGENCY PUBLIC WORKS
DIVISION OF HIGHWAYS

R/W MAP
NO. F-1682-2
07-LA-57-6.2

100 0 100 FILE NO. 18761-C
DATE 2-21-67

RWPE TOMITA SR BERG

LEGEND:

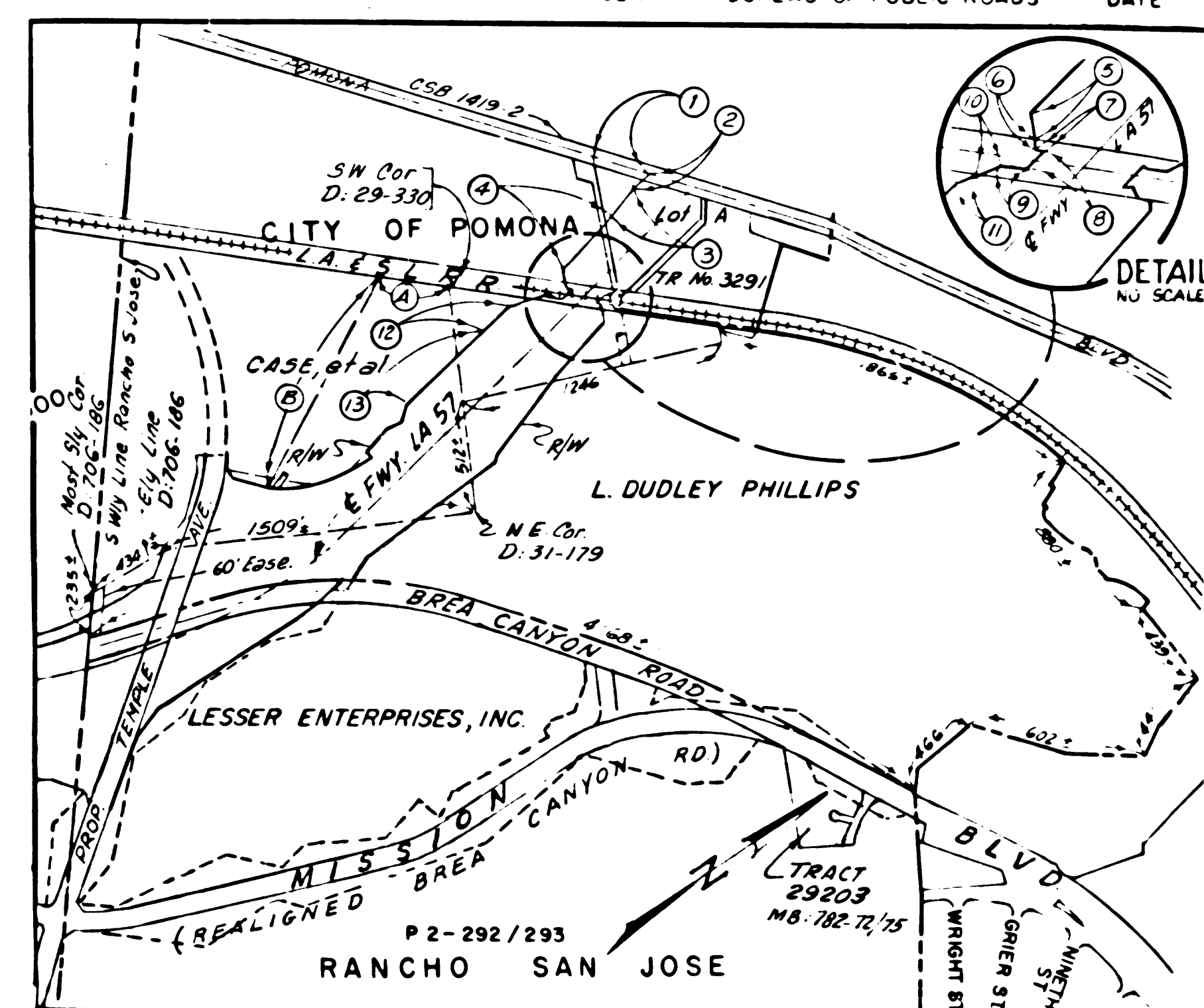
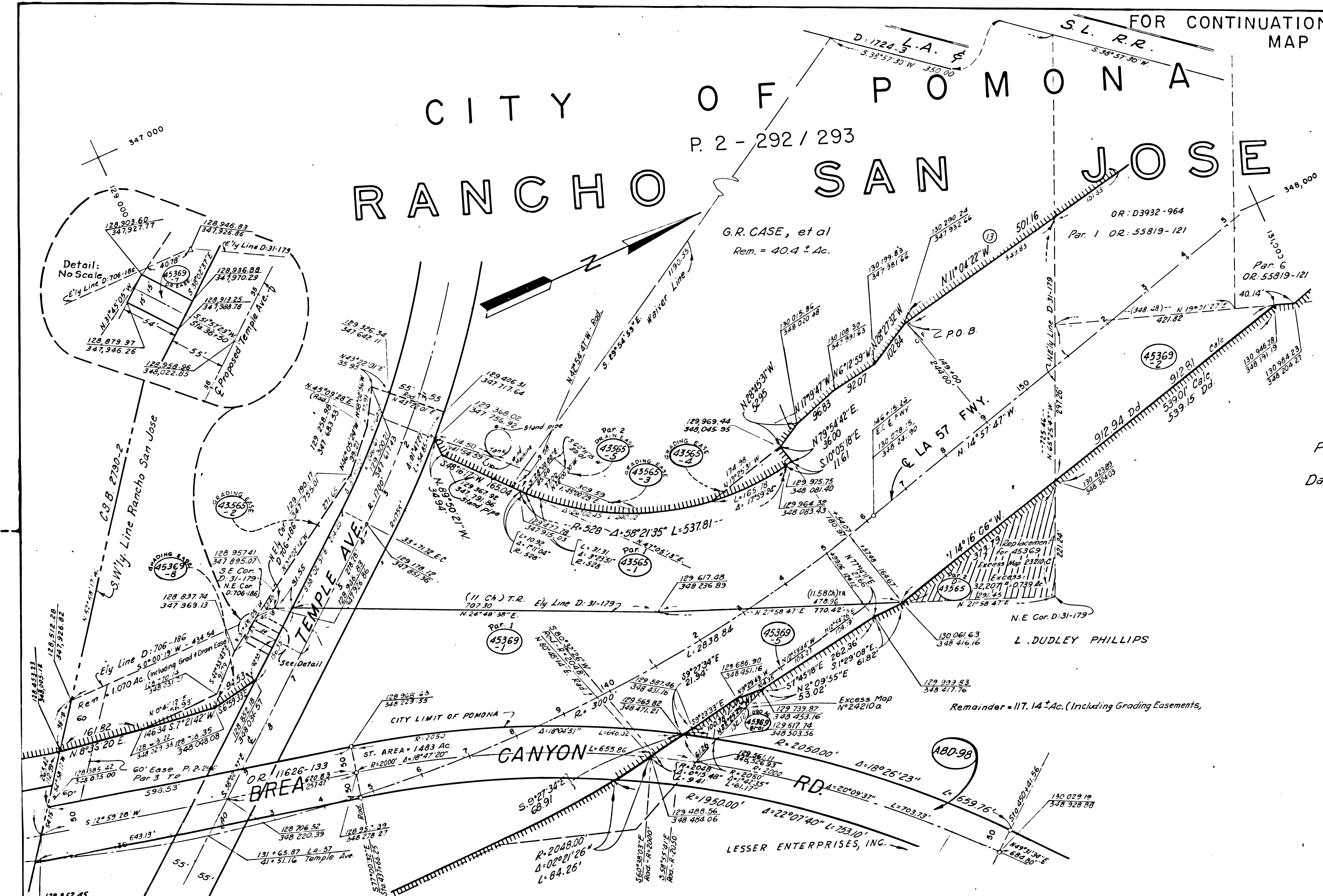
- ACCESS DENIED
- EXCLUDES STREET AREA
- AREA IN SQUARE FEET UNLESS OTHERWISE NOTED
- () PREVIOUS RECORD DATA

F.M. 21623-3

CITY OF POMONA RANCHO SAN JOSE

P. 2 - 292 / 293

FOR CONTINUATION SEE
MAP NO. 1683-1



INSET
SCALE: 1"=800'

1	N49°01'50"E	280.81
2	S11°04'42"E	111.87
3	S15°54'43"E	175.03
4	S13°19'47"E	396.69
5	S40°14'25"E	63.32
6	S82°44'36"E	27.94
7	N38°57'30"E	22.46
8	N38°57'47"E	62.15
9	S38°57'30"W	56.39
10	S18°41'17"W	56.24
11	S11°39'41"E	260.43
12	S11°04'22"E	501.16
13	S38°57'30"W	350.00
14	S29°54'53"E	1190.35

Por. Ro. San Jose
finally confirmed to
Dalton Palomares & Vejar
P. 2 - 286

FOR CONTINUATION SEE MAPS NO. 1682-2 & 1682-4

PARCEL NO.	GRANTOR OR GRANTEE	TO BE ACQUIRED	AREA*	EXCESS	TOTAL	INST. COND.	RECORDING DATE	O.R.	PARCEL NO.	GRANTOR OR GRANTEE	TO BE ACQUIRED	AREA*	EXCESS	TOTAL	INST. COND.	RECORDING DATE	O.R.
45369-1	L.D. PHILLIPS	6.673Ac	128.18		128.18	Fee	4-6-70	D4677-839	43365-1	CASE, G.R., et al	11.579Ac	32.07		32.07	Fee	8-13-69	D4464-960
45369-2	"	1.433Ac				Fee	"	"	43365-2	"	0.304Ac					"	"
45369-4	See F 1682-4								43365-3	"	0.296Ac						"
45369-5	L.D. PHILLIPS	0.202Ac	0.090Ac		0.112Ac		4-6-70	D4677-839	43365-4	"	0.092Ac						"
45369-6	See F 1682-4								43365-5	"	0.256Ac						"
45369-7	L.D. PHILLIPS	0.037Ac			0.037Ac		4-6-70	D4677-839	D-43365	St. to L.D. Phillips					D.D.	7-12-71	D5120-745
45369-8	"	0.272Ac			0.272Ac		"	"	ABD-98	in City of Pomona					Abd	6-26-73	D4248-885
45369-9	St. to D. PHILLIPS						D.D.	8-9-73	181938	State to County of L.A.					Ref	11-1-73	D4346-110

STATE OF CALIFORNIA
TRANSPORTATION AGENCY
DEPARTMENT OF PUBLIC WORKS
DIVISION OF HIGHWAYS

R/W MAP
NO. F1682-3
07-L.A.57-R.6.5

FILE NO. 18763-C
DATE 2-17-67

RWPE Tamita
DR Berg

LEGEND: ACCESS DENIED * EXCLUDES STREET AREA
* AREA IN SQUARE FEET UNLESS OTHERWISE NOTED
() PREVIOUS RECORD DATA

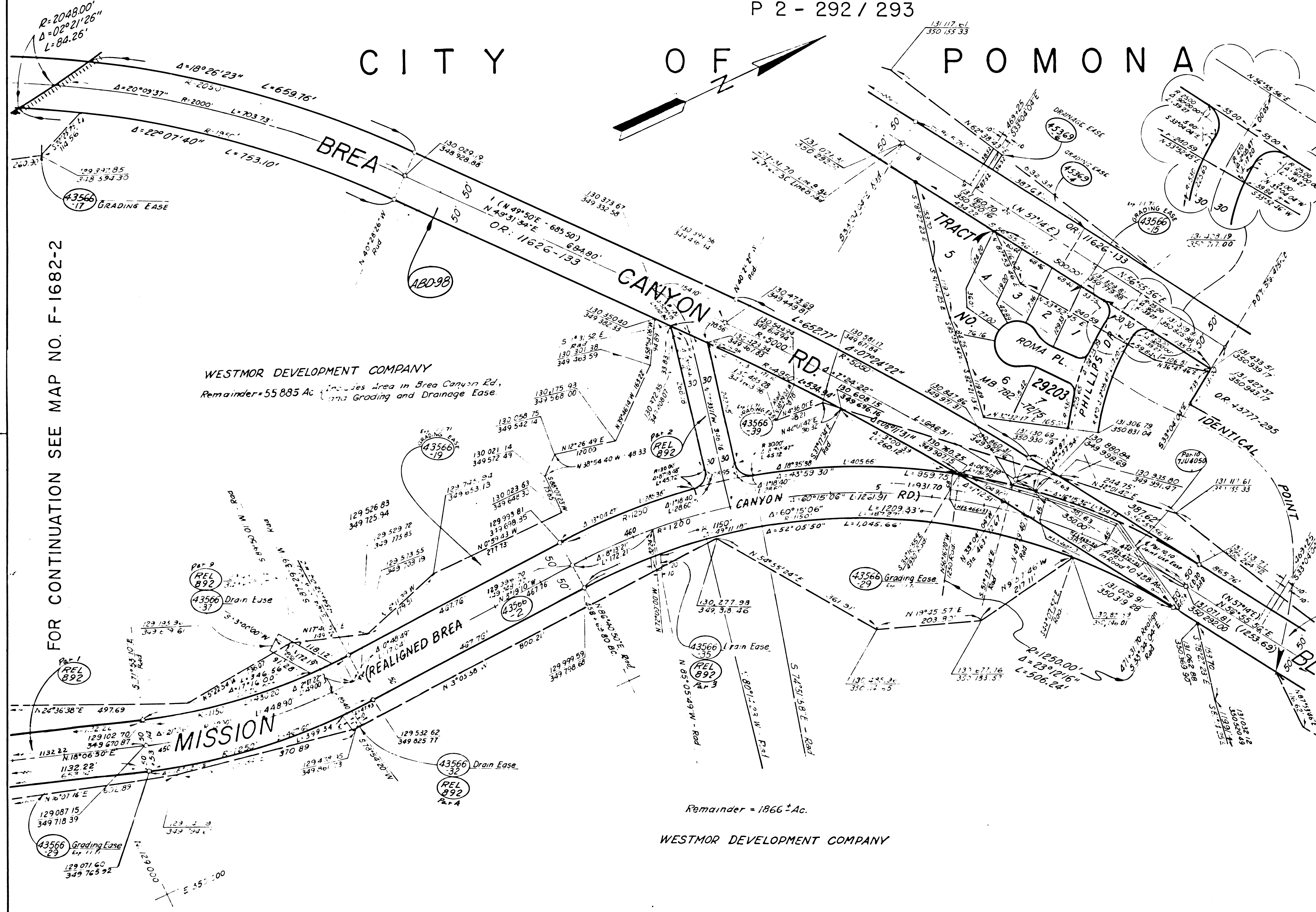
F.M. 21623-4

RANCHO SAN JOSE

FOR CONTINUATION SEE MAP NO. F-1682-3

P 2 - 292 / 293

CITY OF POMONA



FOR CONTINUATION SEE MAP NO. F-1682-2

WESTMOR DEVELOPMENT COMPANY
Remainder = 55,885 Ac. Includes Area in Brea Canyon Rd. and Grading and Drainage Easement.

Remainder = 1866 Ac.
WESTMOR DEVELOPMENT COMPANY

STATE FEDERAL PROJECT NO. DATE
CALIF. BUREAU OF PUBLIC WORKS

PARCEL NO	GRANTOR OR GRANTEE	ACQ	EXCESS	AREA TOTAL	INST	RECORDING DATE	OR
43566-1	Westmor Dev. Co.	4.255Ac		1932Ac	Contd	5-28-71	05073-471
43566-2	"	0.407Ac			Contd		
43566-15	"	0.486Ac			Contd		
43566-16	"	0.039Ac			Contd		
43566-17	"	1.488Ac			Contd		
43566-19	"	4.419Ac			Contd		
43566-20	"	0.011Ac			Contd	5-24-71	05073-471
43566-21	"	1.434Ac			Contd		
43566-23	"	1.630Ac			Contd		
43566-25	"	0.830Ac			Contd		
43566-28	"	0.818Ac			Contd		
43566-29	"	3.210Ac			Contd		
43566-32	"	0.011Ac			Contd		
43566-35	"	0.011Ac			Contd		
43566-37	"	0.011Ac			Contd		
43566-39	"	1.188Ac			Contd		

REL 892 For Grantor Info See Map No. F-1682-1
REL 893 In City of Pomona Add. 62673, 21243, 50

43569-6 LD PHILLIPS 0.17 Ac Drn Easement Add. 470, 046, 77, 81, 9
43569-4 " 0.26 Ac Grading Easement
REL 892 Par. 1, 2, 3, 4, 9, 10 See F-1682-2

▲ Excluding Underlying Fee in Brea Canyon Rd
● Including Drainage Easement

ISSUE DATE

STATE OF CALIFORNIA
TRANSPORTATION AGENCY DEPARTMENT OF PUBLIC WORKS
DIVISION OF HIGHWAYS

R/W MAP
NO. F-1682-4
07-LA-57-6.5

100 0 100 FILE NO 18762 C DATE 2-21-67
RWPE TOMITA SR BERG

LEGEND: ACCESS DENIED
AREA IN SQUARE FEET UNLESS OTHERWISE NOTED
PREVIOUS RECORD DATA

F.M. 21623-5