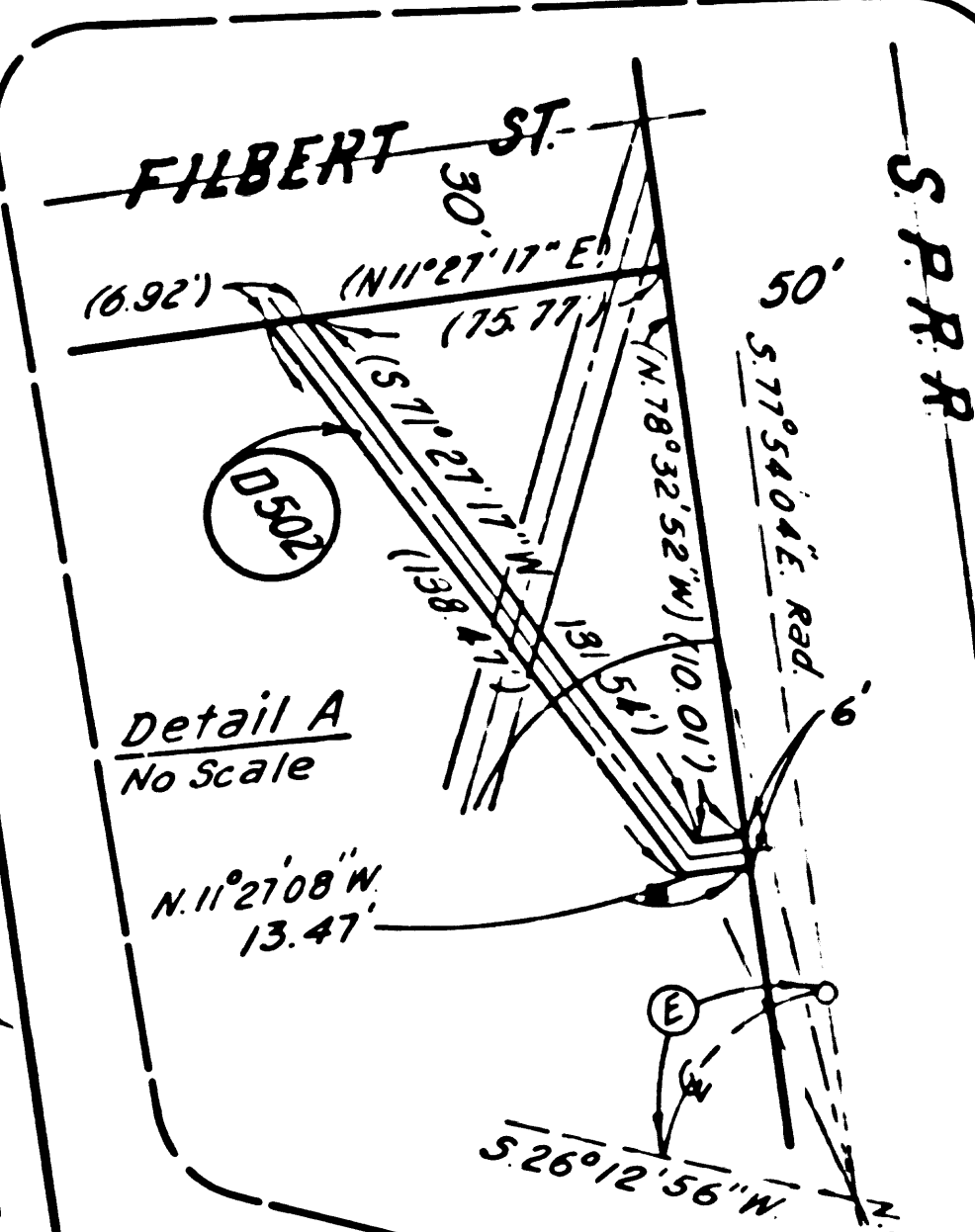
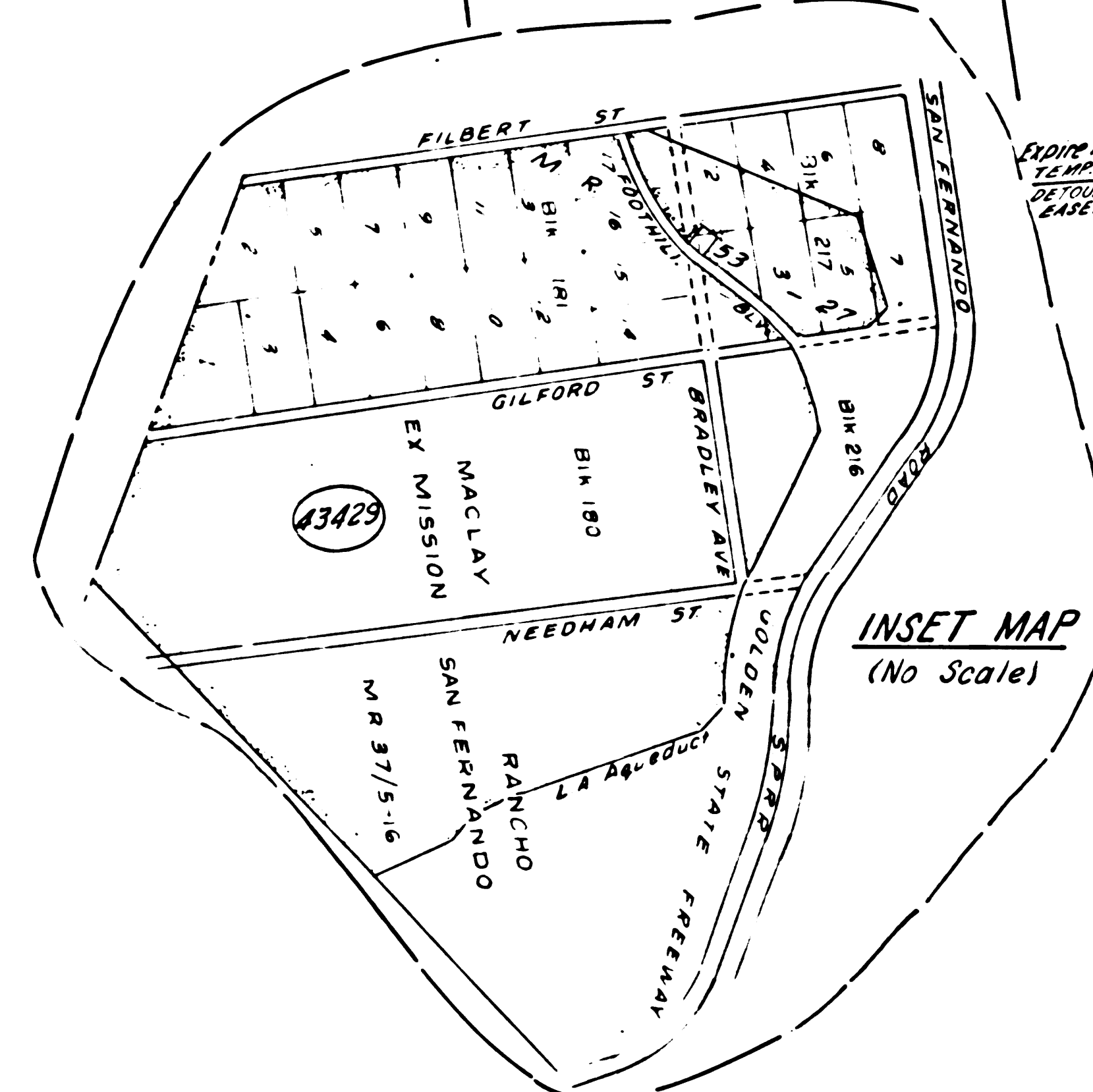
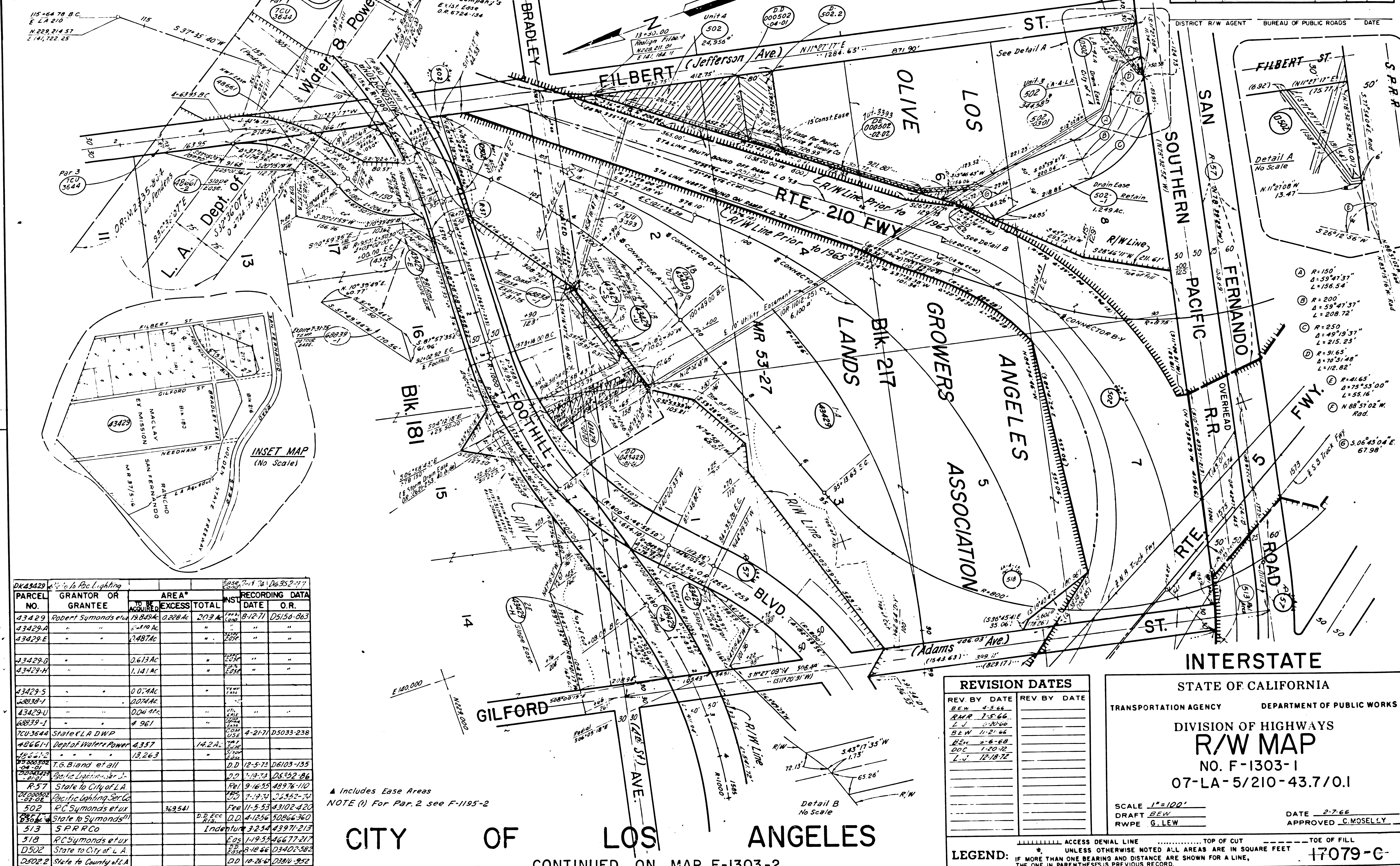


CONTINUED ON MAP NO. F-1195-1

CONTINUED ON MAP F-1195-2

DISTRICT	STATE	FEDERAL PROJECT NO.	EFFECTIVE DATE	SHEET NO.	TOTAL SHEETS
7	CALIF	7-005-3(91)760	5-3-65	3	16



- Ⓐ R=150'
Δ=59°47'37"
L=158.54'
- Ⓑ R=200'
Δ=59°47'37"
L=208.72'
- Ⓒ R=250'
Δ=49°19'37"
L=215.23'
- Ⓓ R=91.65'
Δ=70°31'48"
L=112.82'
- Ⓔ R=41.65'
Δ=75°53'00"
L=55.16'
- Ⓕ N 88°37'02" W
Rad.
- Ⓖ S 06°43'04" E
67.98'

PARCEL NO.	GRANTOR OR GRANTEE	AREA*	TOTAL	DATE	O. R.
43429	Robert Symonds et al	19.8454	203 A	8-12-71	D5156-863
43429-A	"	1.570 AC	"	"	"
43429-E	"	2.487 AC	"	"	"
43429-G	"	0.613 AC	"	"	"
43429-H	"	1.141 AC	"	"	"
43429-S	"	0.079 AC	"	"	"
43429-T	"	0.079 AC	"	"	"
43429-U	"	0.044 AC	"	"	"
7CU3644	State of LA DWP	4.961	"	4-21-71	D5033-238
42661	Dept of Water & Power	4.337	1A.2A.	"	"
19221-2	"	13.263	"	"	"
19221-3	"	"	"	"	"
19221-4	"	"	"	"	"
19221-5	"	"	"	"	"
19221-6	"	"	"	"	"
19221-7	"	"	"	"	"
19221-8	"	"	"	"	"
19221-9	"	"	"	"	"
19221-10	"	"	"	"	"
19221-11	"	"	"	"	"
19221-12	"	"	"	"	"
19221-13	"	"	"	"	"
19221-14	"	"	"	"	"
19221-15	"	"	"	"	"
19221-16	"	"	"	"	"
19221-17	"	"	"	"	"
19221-18	"	"	"	"	"
19221-19	"	"	"	"	"
19221-20	"	"	"	"	"
19221-21	"	"	"	"	"
19221-22	"	"	"	"	"
19221-23	"	"	"	"	"
19221-24	"	"	"	"	"
19221-25	"	"	"	"	"
19221-26	"	"	"	"	"
19221-27	"	"	"	"	"
19221-28	"	"	"	"	"
19221-29	"	"	"	"	"
19221-30	"	"	"	"	"
19221-31	"	"	"	"	"
19221-32	"	"	"	"	"
19221-33	"	"	"	"	"
19221-34	"	"	"	"	"
19221-35	"	"	"	"	"
19221-36	"	"	"	"	"
19221-37	"	"	"	"	"
19221-38	"	"	"	"	"
19221-39	"	"	"	"	"
19221-40	"	"	"	"	"
19221-41	"	"	"	"	"
19221-42	"	"	"	"	"
19221-43	"	"	"	"	"
19221-44	"	"	"	"	"
19221-45	"	"	"	"	"
19221-46	"	"	"	"	"
19221-47	"	"	"	"	"
19221-48	"	"	"	"	"
19221-49	"	"	"	"	"
19221-50	"	"	"	"	"

▲ Includes EASE AREAS
NOTE (1) For Par. 2 see F-1195-2

REV. BY	DATE	REV. BY	DATE
BEW	4-5-66		
RNR	7-5-66		
LJ	8-20-66		
BEW	11-21-66		
BEW	5-6-68		
DOC	1-20-72		
LJ	12-18-72		

STATE OF CALIFORNIA
TRANSPORTATION AGENCY DEPARTMENT OF PUBLIC WORKS
DIVISION OF HIGHWAYS
R/W MAP
NO. F-1303-1
07-LA-5/210-43.7/0.1

SCALE 1"=100'
DRAFT BEW
RWPE G.LEW

DATE 2-7-66
APPROVED C.MOSELLEY

LEGEND: ACCESS DENIAL LINE TOP OF CUT TOE OF FILL
UNLESS OTHERWISE NOTED ALL AREAS ARE IN SQUARE FEET
IF MORE THAN ONE BEARING AND DISTANCE ARE SHOWN FOR A LINE,
THE ONE IN PARENTHESES IS PREVIOUS RECORD.

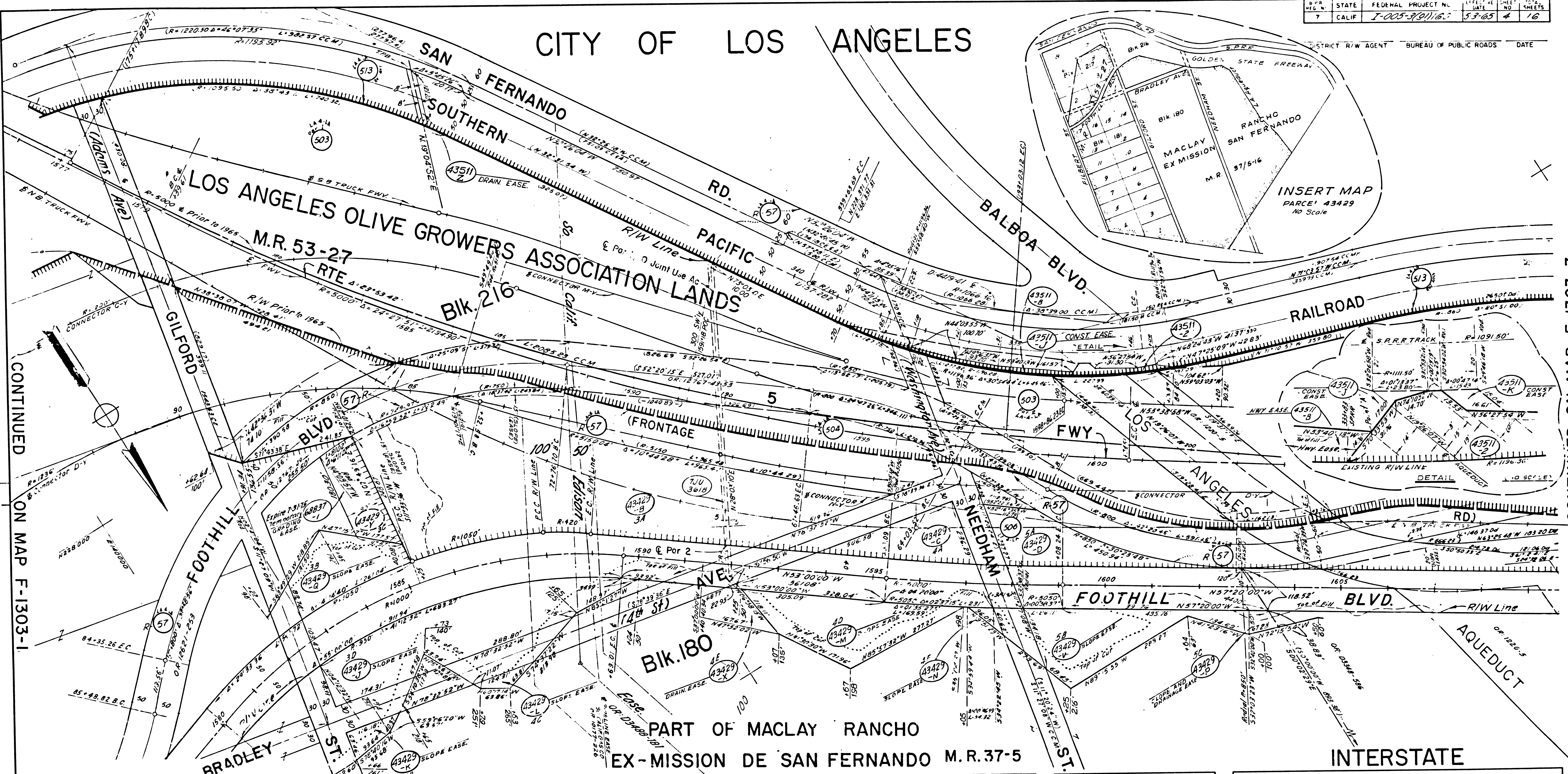
CITY OF LOS ANGELES

CONTINUED ON MAP F-1303-2

F.M. 21628-1

F-1303

CITY OF LOS ANGELES



CONTINUED ON MAP F-1303-1

CONTINUED ON MAP F-1303-3

PARCEL NO.	GRANTOR OR GRANTEE	AREA*			INST.	RECORDING DATA		PARCEL NO.	GRANTOR OR GRANTEE	AREA*			INST.	RECORDING DATA	
		TO BE ACQUIRED	EXCESS	TOTAL		DATE	O.R.			TO BE ACQUIRED	EXCESS	TOTAL		DATE	O.R.
43429-B	Robert Symonds et ux	6.669Ac		250.24Ac	Fee	8-12-71	05156-003	43511-B	S P R R CO.	4,260			Fee	9-16-70	48976-110
43429-C	"	1.399Ac		"	"	"	"	43511-C	"	10,514			Fee	2-4-74	43727-344
43429-D	"	1.752Ac		"	"	"	"	43511-D	"	144			Fee	2-18-74	43829-194
43429-J	"	1.617Ac		"	E08E	"	"	43511-E	"	1,940			Fee	2-19-74	43829-189
43429-K	"	0.099Ac		"	E07E	"	"	43511-F	So Calif Gas Co				Indefinite	3-23-74	43971-213
43429-L	"	0.046Ac		"	E03E	"	"								
43429-M	"	0.899Ac		"	E09E	"	"								
43429-N	"	0.035Ac		"	E05E	"	"								
43429-O	"	0.054Ac		"	E06E	"	"								
43429-P	"	0.849Ac		"	E08E	"	"								
43429-Q	"	0.196Ac		"	E09E	"	"								
43429-R	"	0.325Ac		"	E08E	"	"								
43429-S	"	0.395Ac		"	E08E	"	"								
43511-1	S P R R CO	3.448			Fee										

REVISION DATES	
REV. BY DATE	REV. BY DATE
BC-W 8-8-66	
" 11-21-66	
JTS 4-17-67	
ZJ 5-10-67	
SEK 3-2	
LJ 12-18-72	
LJ 6-13-73	

STATE OF CALIFORNIA
 TRANSPORTATION AGENCY DEPARTMENT OF PUBLIC WORKS
 DIVISION OF HIGHWAYS
R/W MAP
 NO. F-1303-2
 07-LA-5-43.9

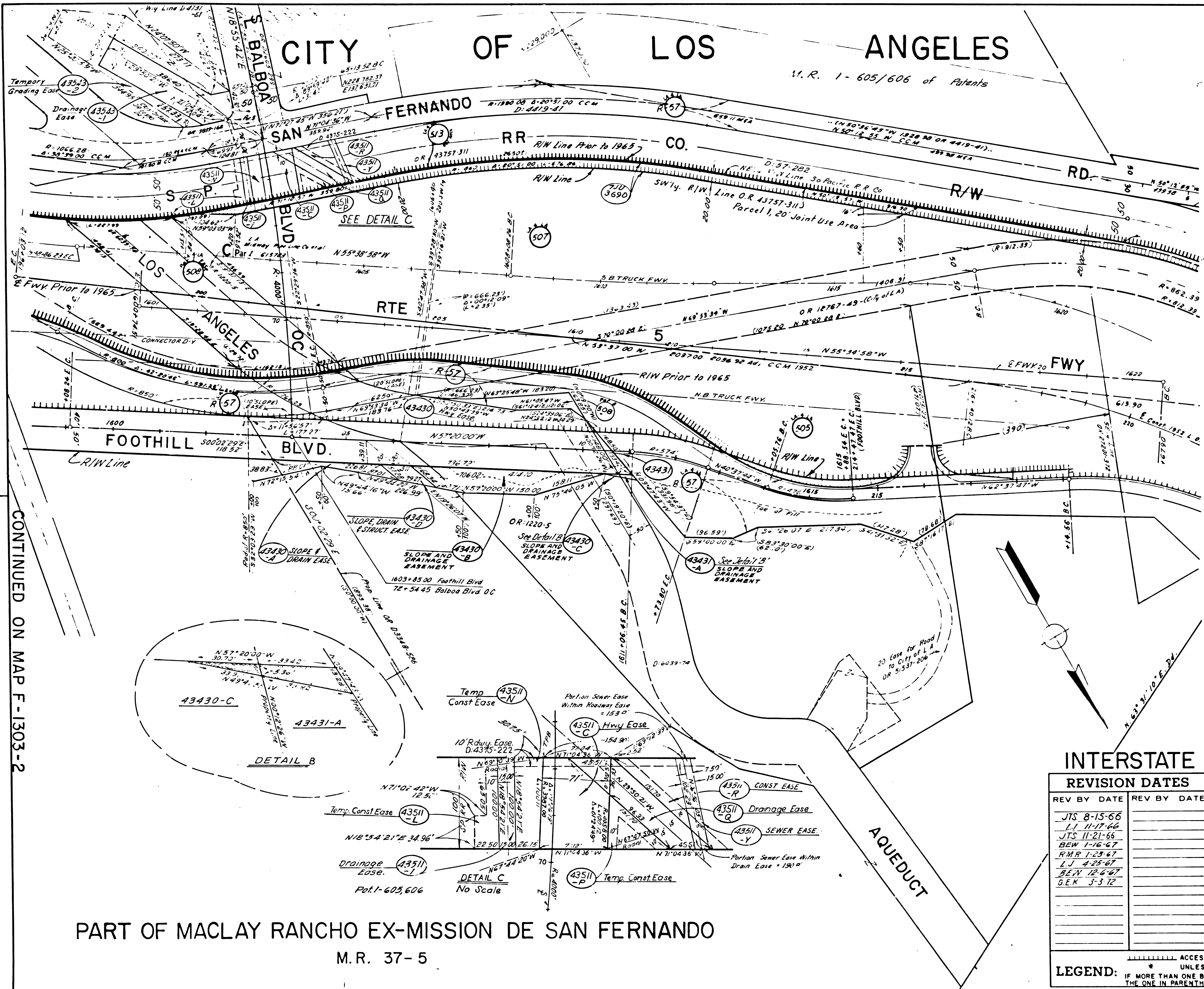
SCALE 1"=100'
 DRAFT BEW
 RWPF G LEW

DATE 2-7-66
 APPROVED C. MOSELEY

LEGEND: ACCESS DENIAL LINE TOP OF CUT TOE OF FILL
 * UNLESS OTHERWISE NOTED ALL AREAS ARE IN SQUARE FEET
 IF MORE THAN ONE BEARING AND DISTANCE ARE SHOWN FOR A LINE, THE ONE IN PARENTHESES IS PREVIOUS RECORD

F.M. 21628-2

F-1303-2



STATE	FEDERAL PROJECT NO	EFFECTIVE DATE	SHEET NO	TOTAL SHEETS
CALIF	1-725-201	5-3-63	5	16

DISTRICT R/W AGENT BUREAU OF PUBLIC ROADS DATE

PARCEL NO.	GRANTOR OR GRANTEE	AREA	EXCESS	TOTAL	RECORDING DATE	O.R.
43430	City of Los Angeles	98.098			1-6-70	D4599-528
43430A	"	4.806			"	"
43430B	"	15.144			"	"
43430C	"	69			"	"
43430D	"	2392			"	"
43431	RR Holland et al	207	5.134		10-24-67	D4807-225
43431A	"	245			"	"
43511-C	SP RR Co	7.107			"	"
43511-I	"	1507			"	"
43511-L	SP RR Co	1.237			"	"
43511-N	"	2863			"	"
43511-P	"	1331			"	"
43511-Q	"	3766			"	"
43511-R	"	1565			"	"
43511-Y	"	1533			"	"
43543A	Metropolitan	19.522	265A		3-23-70	D4666-693
43543B	"	26.652			"	"
R-57	State to City of LA				9-16-55	48976-110
505	RS Carnes et ux				7-1-55	48244-347
507	RC Symonds et ux				2-4-54	43757-311
508	LA Midway Pipeline				1-12-56	50026-416
513	S.P.R.R. Co.				Inactive	3-2-54
7103697	Mobil Oil Corp				JUL 8-22-69	3474-238

CONTINUED ON MAP F-1303-5 and -4

CONTINUED ON MAP F-1303-2

PART OF MACLAY RANCHO EX-MISSION DE SAN FERNANDO
M.R. 37-5

INTERSTATE

REVISION DATES	
REV BY	DATE
JTS	8-15-66
LJ	11-17-66
JTS	11-21-66
BEW	1-16-67
RMR	1-23-67
LJ	4-25-67
BEW	12-6-67
G EK	3-3-72

STATE OF CALIFORNIA
TRANSPORTATION AGENCY DEPARTMENT OF PUBLIC WORKS
DIVISION OF HIGHWAYS
R/W MAP
NO. F-1303-3
07-LA-5-44.1
SCALE 1" = 100'
DRAFT B.E.W.
RWPE G.LEW
DATE 2-11-66
APPROVED C.MOSELEY

LEGEND: ACCESS DENIAL LINE TOP OF CUT TOE OF FILL
UNLESS OTHERWISE NOTED ALL AREAS ARE IN SQUARE FEET
IF MORE THAN ONE BEARING AND DISTANCE ARE SHOWN FOR A LINE,
THE ONE IN PARENTHESES IS PREVIOUS RECORD.

F.M. 21628-3

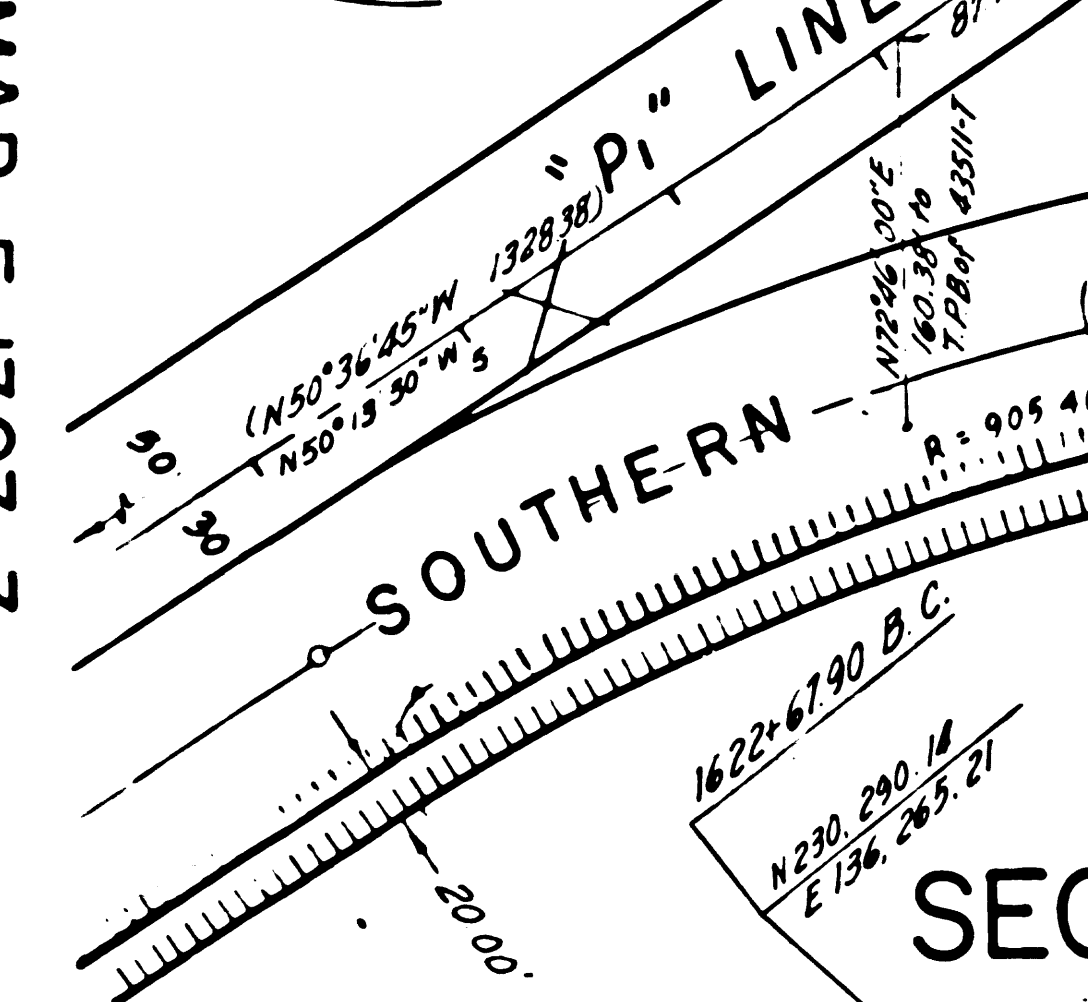
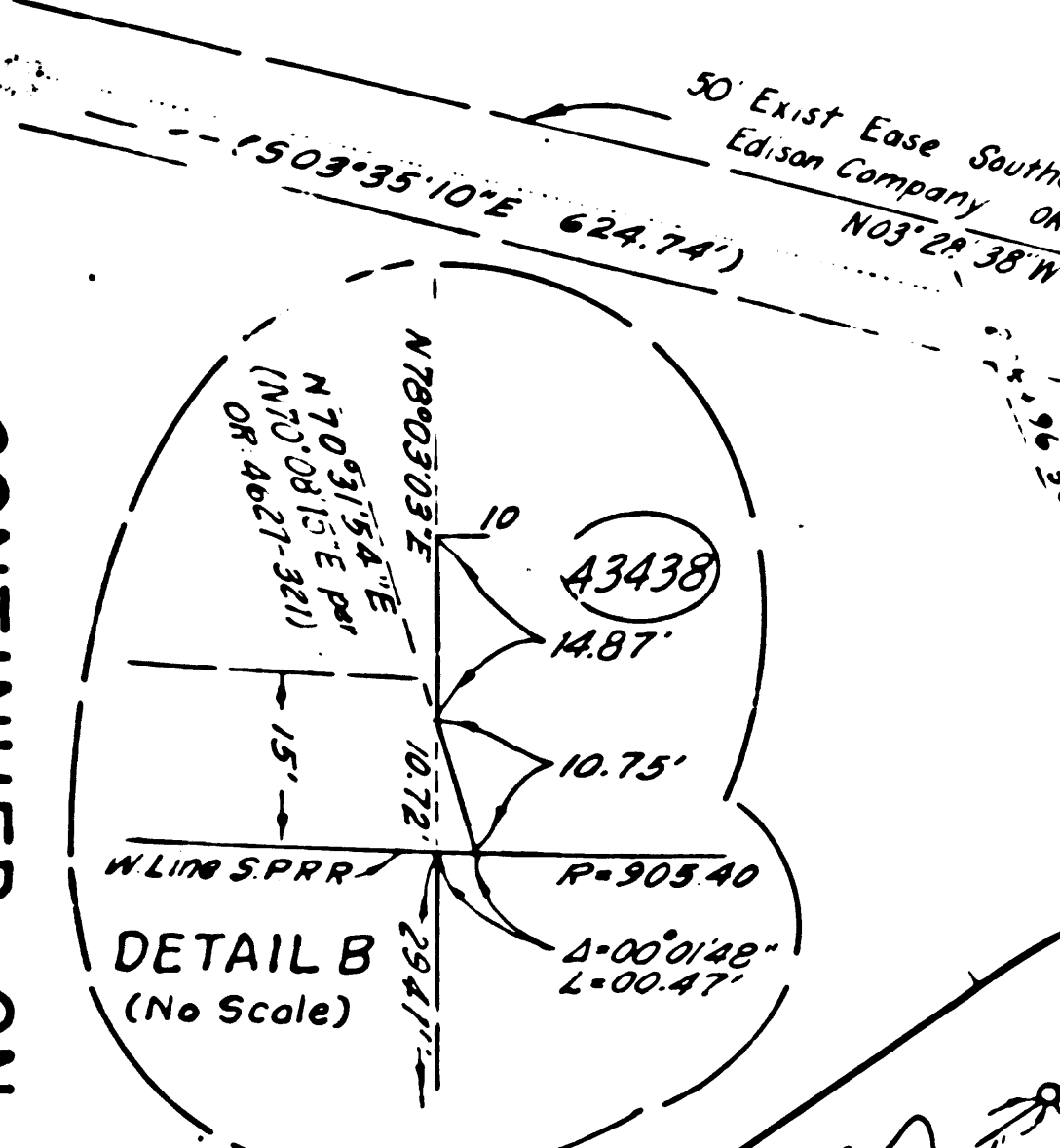
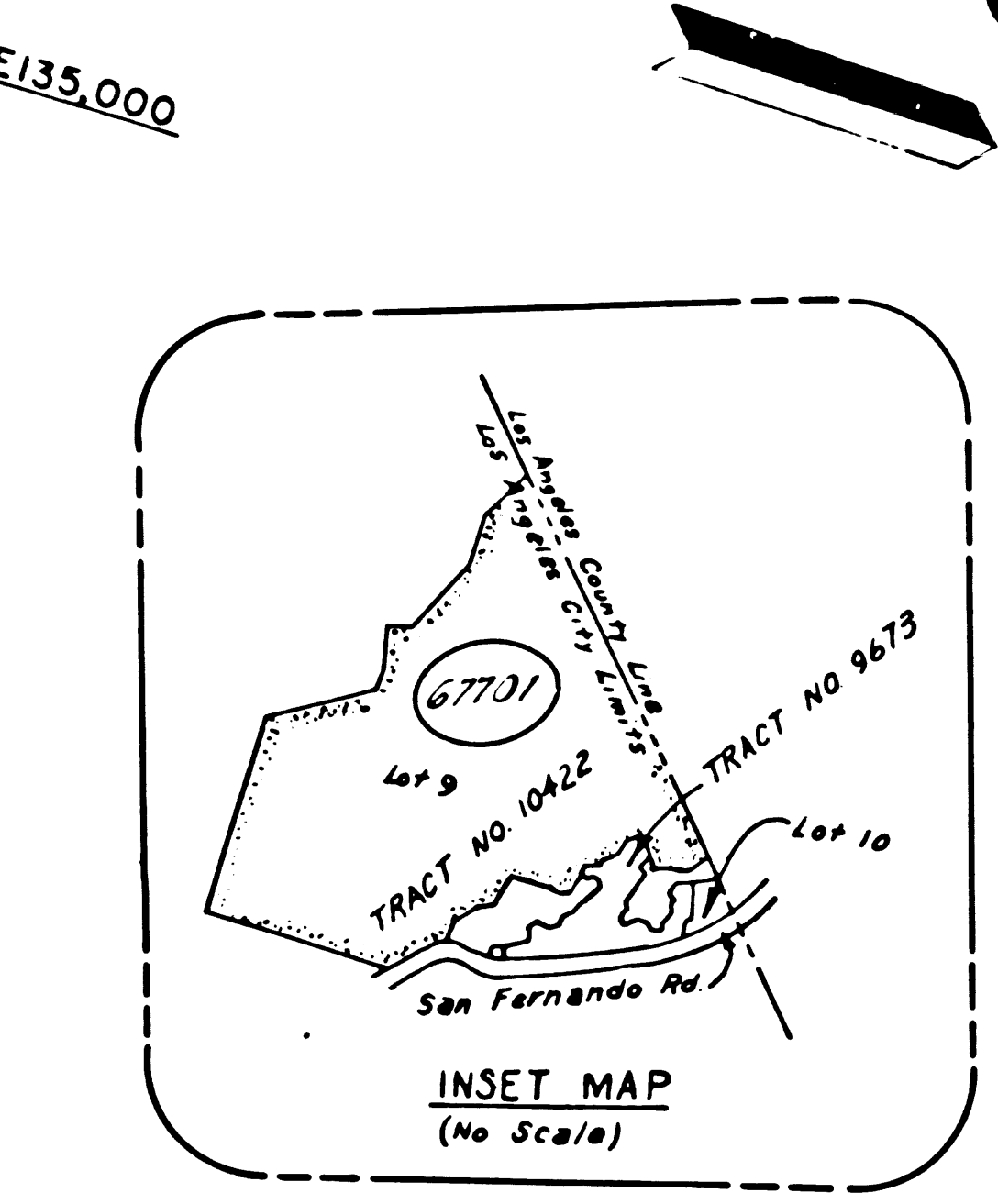
F-1303

CITY OF LOS ANGELES

TRACT NO. 10422

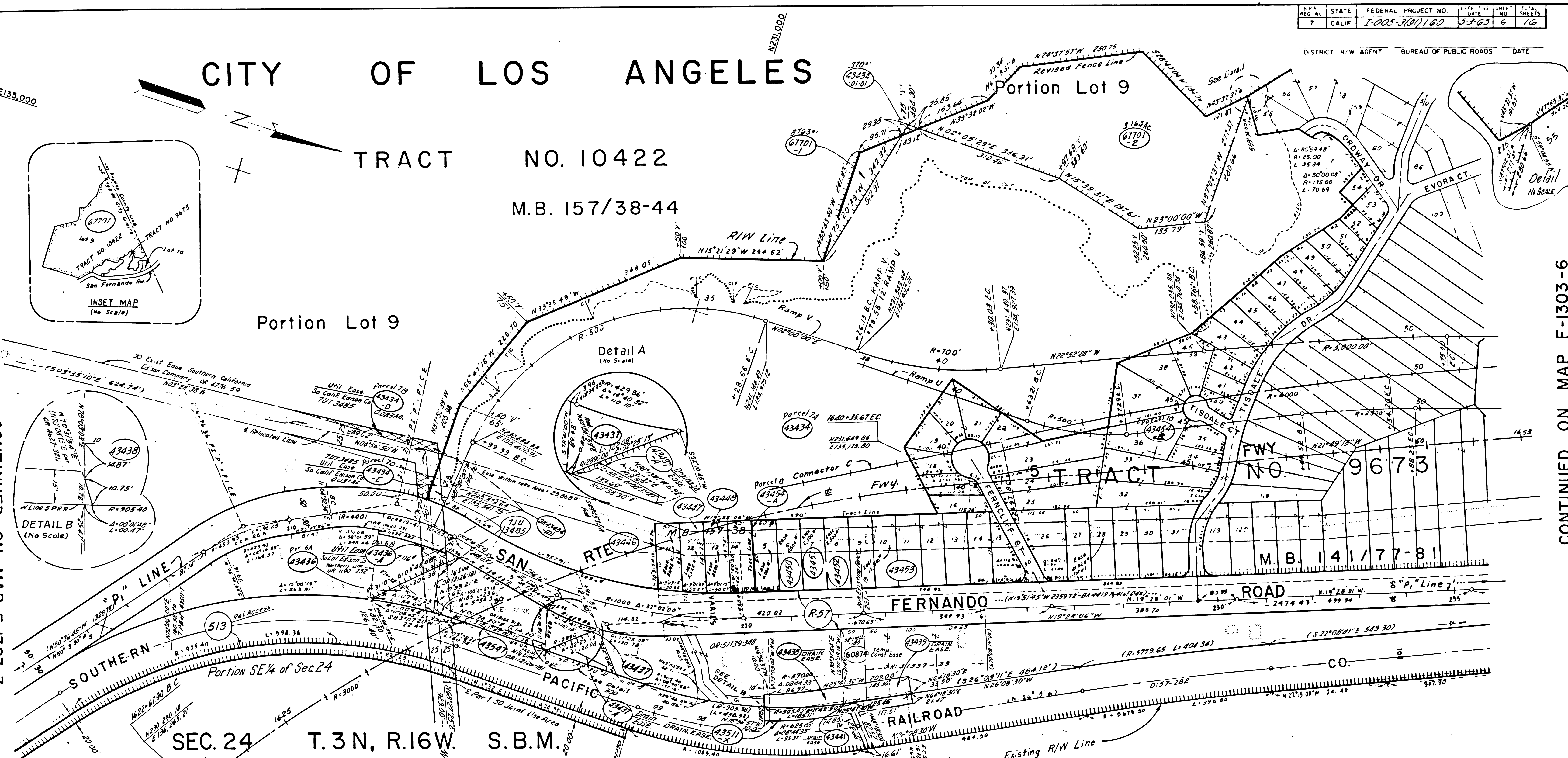
M.B. 157/38-44

Portion Lot 9



CONTINUED ON MAP F-1303-3

CONTINUED ON MAP F-1303-6



RANCHO EX-MISSION DE SAN FERNANDO PAT: I-605 CONT. ON MAP F-1303-5 INTERSTATE

PARCEL NO.	GRANTOR OR GRANTEE	TO BE ACQUIRED	AREA*	EXCESS	TOTAL	INST.	RECORDING DATE	O.R.
43434	Sunshine Canyon Inc	20.338Ac	370"	521.886Ac	541.224Ac	Fee	10-16-69	04526-607
43434-D	"	0.0831Ac	"	"	0.0831Ac	Fee	"	"
43434-E	"	0.031Ac	"	"	0.031Ac	Fee	"	"
43436	M.C. Blair	29.566	87.500	117.066	117.066	Fee	10-27-70	04971-714
43436-A	"	2.116	"	"	2.116	Fee	"	"
43437	E.A. Ulrey et ux	4.567	28.803	33.370	33.370	Fee	2-10-69	04274-936
43437-A	"	1.819	"	"	1.819	Fee	2-27-68	03923-93
43438	C.A. Sheldon	4.833	46.094	50.927	50.927	Fee	2-7-68	03907-231
43439	R.L. Provo et ux	3.289	34.555	37.844	37.844	Fee	8-3-67	03723-747
7103485	Collif Edison Co	"	"	"	"	D.D.	7-2-68	"
DK43434	Southern Calif Edison Co	"	"	"	"	D.D.	7-16-73	05948-63
43441	E. Murphy	1.735	7.675	9.410	9.410	Fee	7-11-67	03698-989
60374	"	5.940	7.675	13.615	13.615	Fee	"	"
43446	A.R. Schwartz	6.919	6.919	6.919	6.919	Fee	3-30-67	03598-67
43447	T.J. Guston	7.244	7.244	7.244	7.244	Fee	1-23-67	03538-327
43448	Publix Title Co	7.436	7.436	7.436	7.436	Fee	5-8-67	03635-809
43450	Universal Oil Corp	7.500	7.500	7.500	7.500	Fee	3-4-68	03429-154
43451	City of Los Angeles	7.500	7.500	7.500	7.500	Fee	2-27-68	03923-93
43452	Charlotte Jackson	7.500	7.500	7.500	7.500	Fee	12-9-66	03502-841
43453	H. Weikhaft et ux	37.500	37.500	37.500	37.500	Fee	10-31-66	03469-8
43454A	M.M. Rabins	0.344Ac	34.623Ac	35.067Ac	35.067Ac	Fee	10-15-69	04926-601
43454B	"	6.125Ac	"	6.125Ac	6.125Ac	Fee	"	"
43454X	S.P.R.R. Co.	8.520	"	8.520	8.520	Fee	3-1-72	06987-225
43457	City of Los Angeles	3.761	3.761	3.761	3.761	Fee	12-18-60	04227-369

PARCEL NO.	GRANTOR OR GRANTEE	TO BE ACQUIRED	AREA*	EXCESS	TOTAL	INST.	RECORDING DATE	O.R.
R-57	State to City of L.A.	"	"	"	"	Fee	9-16-55	02976-110
513	Southern Pacific RR Co	"	"	"	"	Fee	3-2-54	03977-219
677415	Sunshine Canyon Inc	0.763	500.246	501.009	501.009	Fee	"	"
67701-2	"	3.164Ac	"	"	3.164Ac	Fee	"	"

REVISION DATES	
REV. BY	DATE
REW	6-14-66
"	7-26-66
"	8-16-66
"	9-27-66
"	11-29-66
LJ	12-1-66
"	4-18-67
"	4-21-67
"	4-21-67
"	4-21-67
EA	2-17-72
LJ	9-24-73
"	11-4-75
DE	11-19-75
DE	12-11-75

STATE OF CALIFORNIA

TRANSPORTATION AGENCY DEPARTMENT OF PUBLIC WORKS

DIVISION HIGHWAYS

R/W MAP

NO. F-1303-4

07-LA-5-44.8

SCALE 1"=100'

DRAFT RMR

R/WPE G LEW

DATE Dec 21, 1965

APPROVED C MOSELEY

LEGEND:

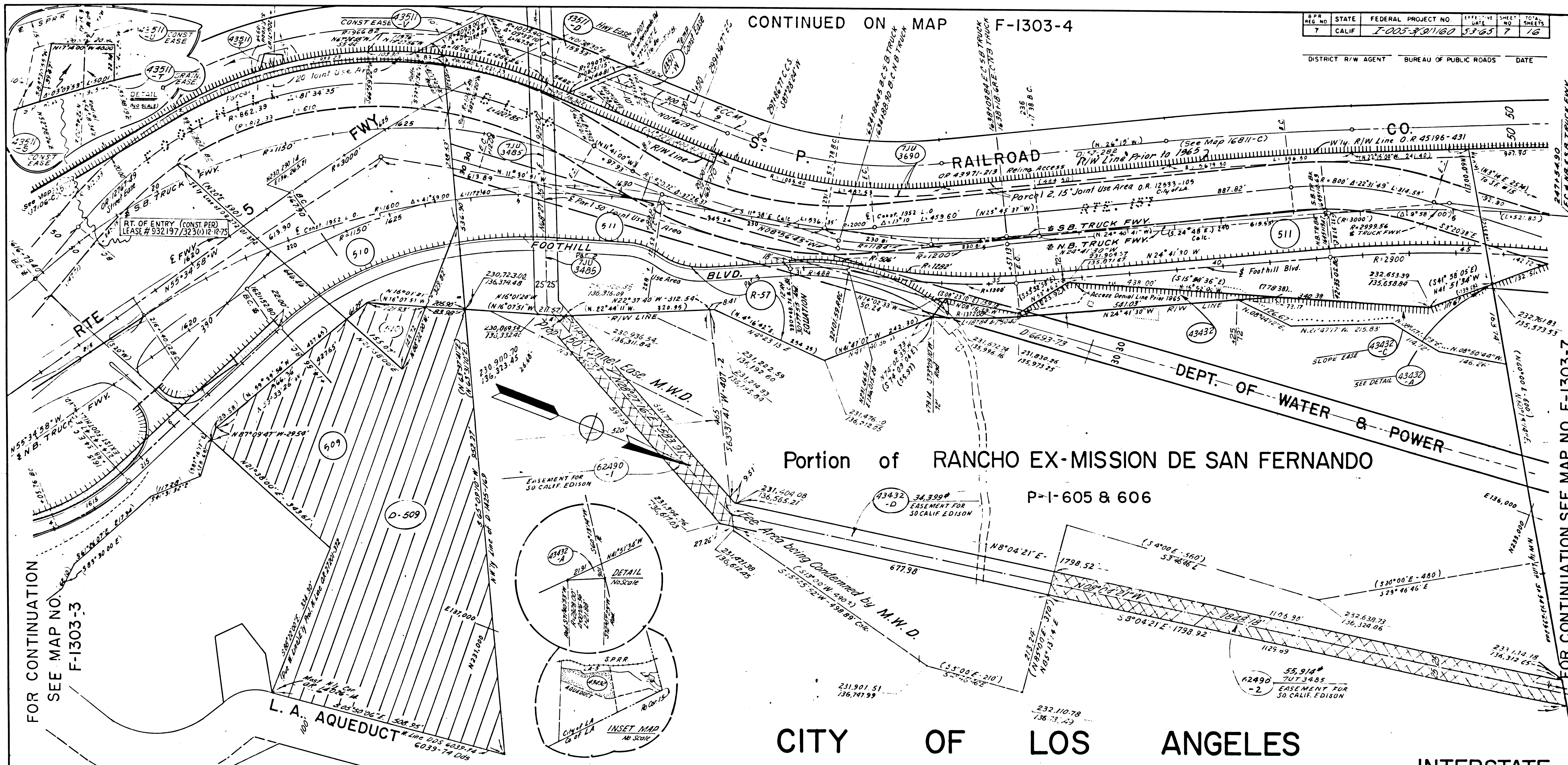
- ACCESS DENIAL LINE
- TOP OF CUT
- TOE OF FILL
- * UNLESS OTHERWISE NOTED ALL AREAS ARE IN SQUARE FEET
- IF MORE THAN ONE BEARING AND DISTANCE ARE SHOWN FOR A LINE, THE ONE IN PARENTHESES IS PREVIOUS RECORD
- SPECIAL USE AREA

F.M. 21628-641-C F-1303-4

CONTINUED ON MAP F-1303-4

STATE	FEDERAL PROJECT NO.	SHEET NO.	TOTAL SHEETS
7 CALIF	F-005-991160	53-65	7 16

DISTRICT R/W AGENT BUREAU OF PUBLIC ROADS DATE



PARCEL NO.	GRANTOR OR GRANTEE	AREA*		INST.	RECORDING DATA	
		TO BE ACQUIRED	EXCESS TOTAL		DATE	O.R.
43432	Metropolitan Water Dist	23,156	23.52 Ac	Fee		
43432-A	"	97	"	Fee		
43432-C	"	32,029	"	Ease		
43432-D	"	34,399	"	2007		
62490-1	Hercules to So. Cal. Ed. Co.	28,712	40.29 Ac	Inst.	7-18-75	D6731-395
62490-2	"	5,914	"	Inst.	7-18-75	D6731-398
7103493	See Map No 16811-C					

PARCEL NO.	GRANTOR OR GRANTEE	AREA*		INST.	RECORDING DATA	
		TO BE ACQUIRED	EXCESS TOTAL		DATE	O.R.
43511-D	S. P. R. R. Co.	33,197		Inst.	3-1-76	M5267-576
43511-V	"	3,790		Inst.		
43511-W	"	6,031		Inst.		
43511-S	"	396		Inst.		
43511-T	"	1,302		Inst.	3-1-76	M5267-576
43511-U	"	622		Inst.		

PARCEL NO.	GRANTOR OR GRANTEE	AREA*		INST.	RECORDING DATA	
		TO BE ACQUIRED	EXCESS TOTAL		DATE	O.R.
R-57	State to City of L.A.			Rel	9-16-55	48976-110
509	M.O. Nelson et ux	764,589		Fee	7-1-55	48244-341
510	Harry Reeves et al	13,043		Fee	3-22-54	44126-306
511	Hercules Powder Co.			Fee	7-30-54	45196-431
710364	At-til Oil Corp			Inst.	9-22-64	52475-414-338
D-509	Store to Bank of America			DD	3-1-72	D5373-403-194

REVISION DATES	
REV BY	DATE
BEW	7-26-64
BEW	10-14-64
LJ	11-28-64
RMR	12-16-64
RMR	4-17-67
LJ	12-8-67
NSG	4-18-70
JQ	8-26-70

STATE OF CALIFORNIA
TRANSPORTATION AGENCY DEPARTMENT OF PUBLIC WORKS
DIVISION OF HIGHWAYS
R/W MAP
NO. F-1303-5
07-LA-5-44.7

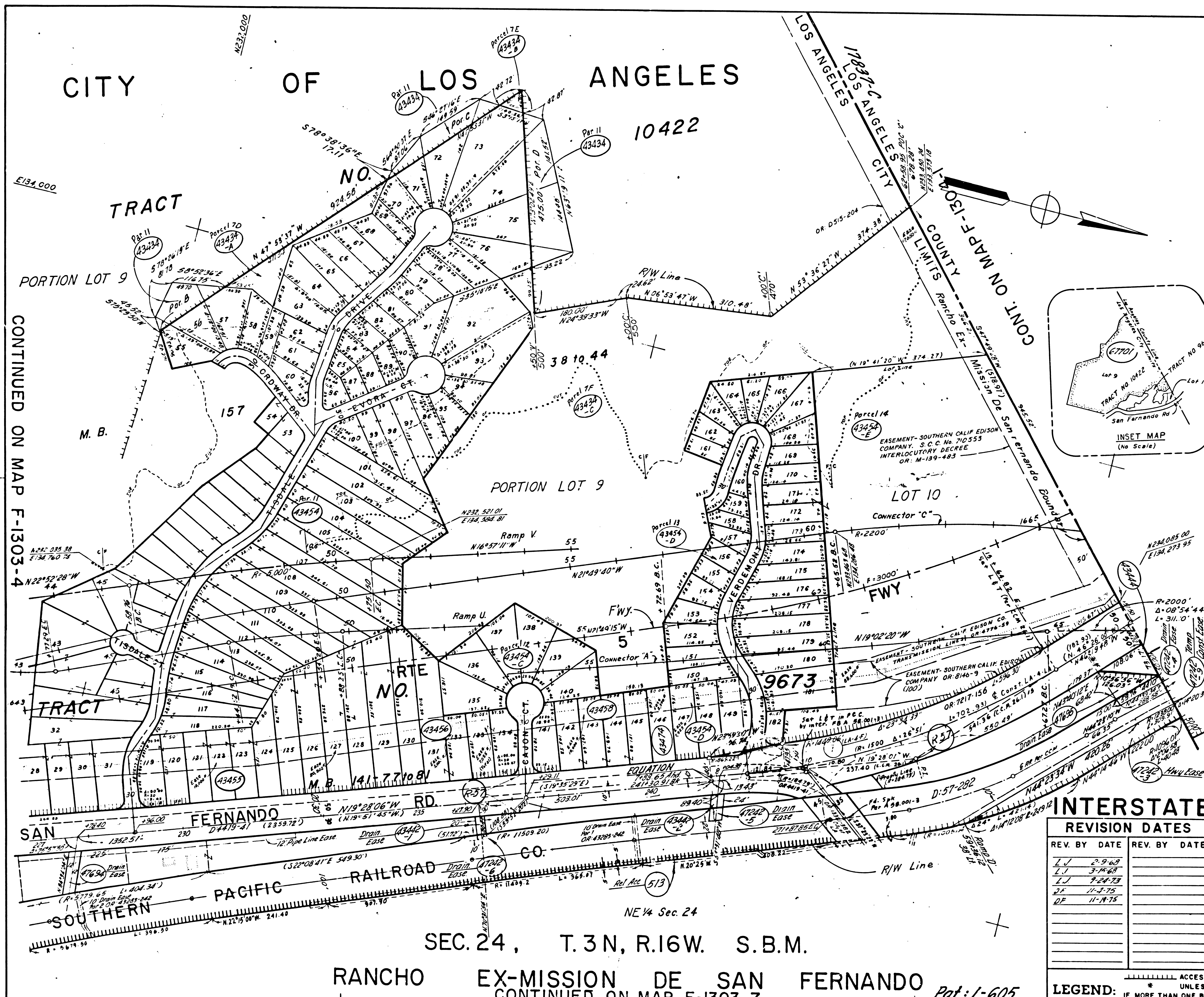
SCALE 1"=100'
DRAFT R.J.S.
RWPE G LEW

DATE 2-4-66
APPROVED C. MOSELEY

LEGEND:
----- ACCESS DENIAL LINE
----- TOP OF CUT
----- TOE OF FILL
* UNLESS OTHERWISE NOTED ALL AREAS ARE IN SQUARE FEET
IF MORE THAN ONE BEARING AND DISTANCE ARE SHOWN FOR A LINE, THE ONE IN PARENTHESES IS PREVIOUS RECORD
● SPECIAL USE AREA

F.M. 21625-5 4716-C F-1303-3

CITY OF LOS ANGELES



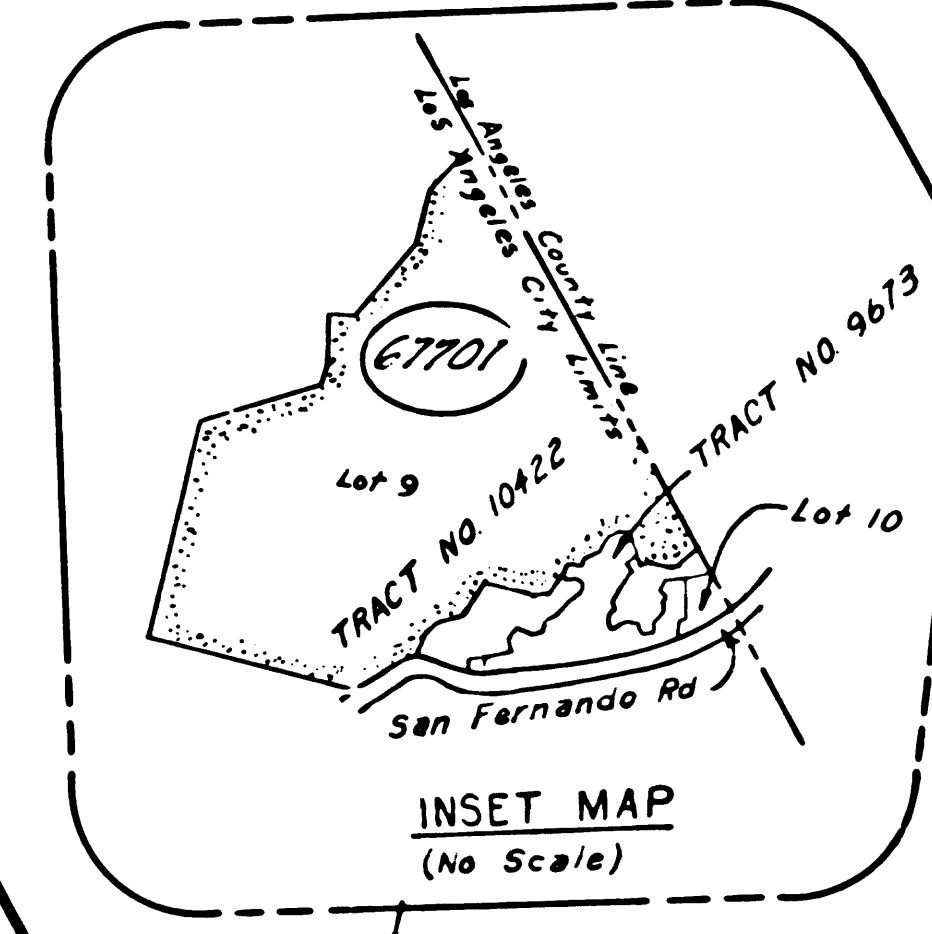
CONTINUED ON MAP F-1303-4

CONTINUED ON MAP F-1304-

B.P.R. REG. NO.	STATE	FEDERAL PROJECT NO.	EFFECTIVE DATE	SHEET NO.	TOTAL SHEETS
7	CALIF.	1-005-3(9)160	5-3-65	8	16

DISTRICT R/W AGENT BUREAU OF PUBLIC ROADS DATE

PARCEL NO.	GRANTOR OR GRANTEE	ACRES	AREA*	EXCESS	TOTAL	INST. DATE	RECORDING DATA
43434-A	Sunshine Canyon Inc.	0.280	Ac		521448	10-15-69	D4526-400
43434-B	"	0.030	Ac		"	"	"
43434-C	"	11.478	Ac		"	"	"
43444	H.A. Mathisen, et. ux.	3,943		33,500 ±	fee	6-20-67	D3677-9d
43454	M. Rabins	13,957	Ac		34,623	10-15-69	D4526-600
43454-C	"	1.684	Ac		"	"	"
43454-D	"	1.575	Ac		"	"	"
43454-E	"	10,938	Ac		"	"	"
43455	R. Lieberman	31,617			fee	12-15-66	D2507-623
43456	Publix Title Co.	20,876		20,876	fee	4-10-67	D3608-419
43458	"	29,953		29,953	fee	4-10-67	D3608-417
43474	R. Lieberman	7,753		7,753	fee	12-20-66	D3511-112
43442-1	J. Consolo et ux	817		1,484	fee	7-1-69	D4421-640
43442-2	"	752		"	"	"	"
47242-3	S.P.R.R. Co.	See Map No.		16,975	-C		
47242-4	"	"		"	"	"	"
47242-5	"	"		"	"	"	"
47242-6	"	6.92		"	"	"	"
47694	Grant Const. Co. Inc et al.	2,127		0,424	fee	7-17-59	D4438-251
47695	H.A. Mathisen et ux	3,485		29,857	fee	7-4-65	D4217-622
11A-47	Calif. Trust Co.					8-4-28	7217-196
R-57	State to City of L.A.					9-16-55	48976-110
513	S.P.R.R. Co.					3-2-54	43971-213



REVISION DATES	
REV. BY	DATE
LJ	2-9-68
LJ	3-16-68
LJ	7-24-73
DL	11-4-75
DL	11-11-75

STATE OF CALIFORNIA
TRANSPORTATION AGENCY DEPARTMENT OF PUBLIC WORKS
DIVISION OF HIGHWAYS
R/W MAP
NO. F-1303-6
07-LA-5-45.1

SCALE 1"=100'
DRAFT RMR
RWPE G LEW

DATE Dec. 29, 65
APPROVED C. MOSELEY

LEGEND: ----- ACCESS DENIAL LINE TOP OF CUT
* UNLESS OTHERWISE NOTED ALL AREAS ARE IN SQUARE FEET
IF MORE THAN ONE BEARING AND DISTANCE ARE SHOWN FOR A LINE, THE ONE IN PARENTHESES IS PREVIOUS RECORD.

----- TOE OF FILL
16860-C

SEC. 24, T. 3 N, R. 16 W. S. B. M.

RANCHO EX-MISSION DE SAN FERNANDO
CONTINUED ON MAP F-1303-7 Pat: 1-605

F.M. 21628-6

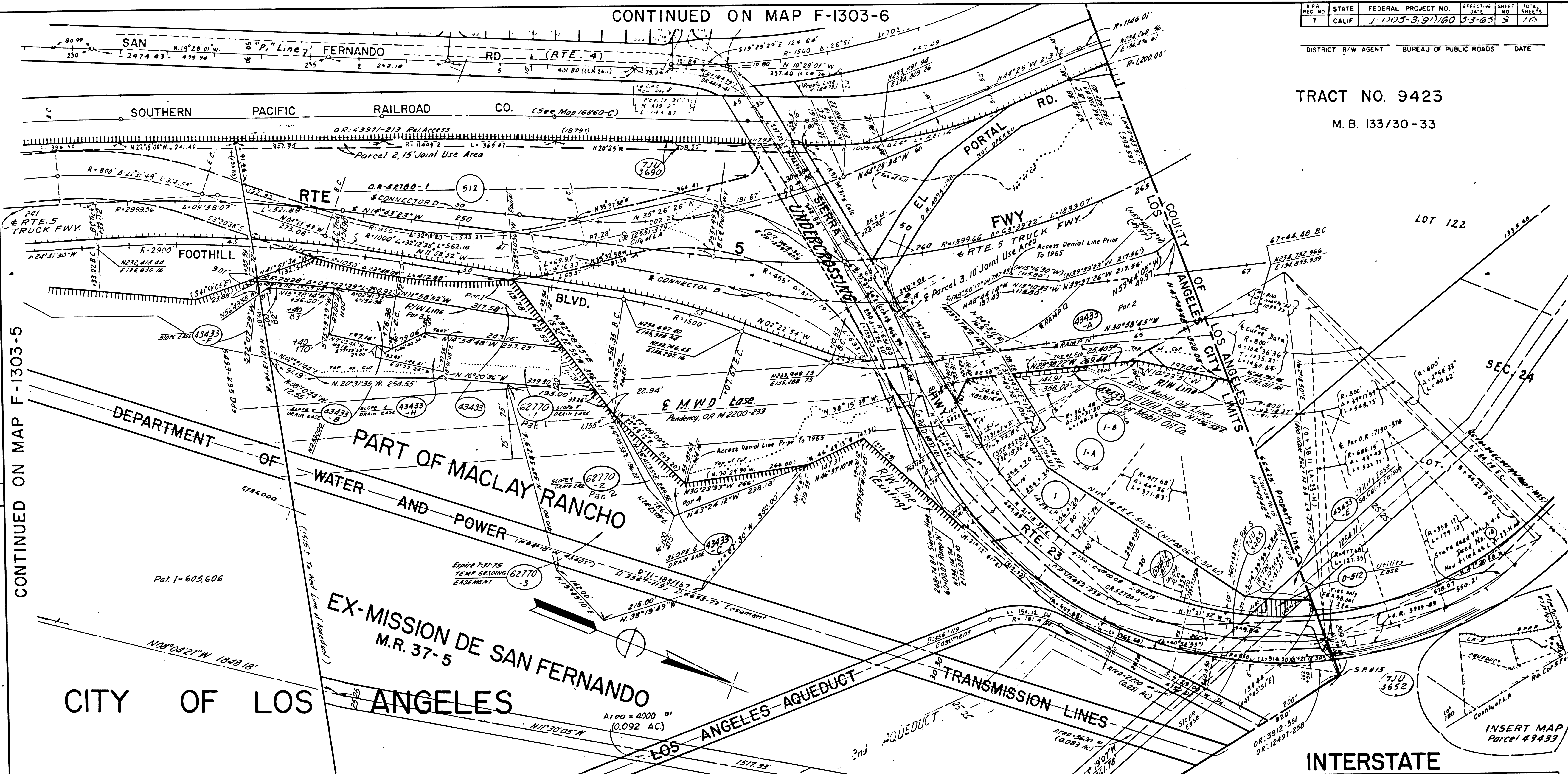
F-1303

CONTINUED ON MAP F-1303-6

STATE	FEDERAL PROJECT NO.	EFFECTIVE DATE	SHEET NO.	TOTAL SHEETS
CALIF	1-005-3,971/60	5-3-65	5	16

DISTRICT R/W AGENT BUREAU OF PUBLIC ROADS DATE

TRACT NO. 9423
M. B. 133/30-33



CONTINUED ON MAP F-1303-5

CITY OF LOS ANGELES

EX-MISSION DE SAN FERNANDO
M.R. 37-5
Area = 4000 sq ft (0.092 AC)

PARCEL NO.	GRANTOR OR GRANTEE	TO BE ACQUIRED	AREA*	EXCESS	TOTAL	INST.	RECORDING DATE	O.R.	PARCEL NO.	GRANTOR OR GRANTEE	TO BE ACQUIRED	AREA*	EXCESS	TOTAL	INST.	RECORDING DATE	O.R.
43433	Standard Oil of Calif	0.709 AC	0.709				7-16-70	04773-862	1	Standard Oil of Calif	Fee	12-9-37	15432-235				
43433-A	"	0.234 AC	0.234						1-A	Richfield Oil Corp.	Eas	12-24-37	15520-260				
43433-B	"	0.205 AC	0.205						1-B	Postal Tel Cable Co	Q.C.	8-21-42	19512-172				
43433-C	"	0.348 AC	0.348						512	Standard Oil of Calif	Fee	11-5-56	52780-1				
43433-D	Standard Oil of Calif to So. Cal. Edison Co.	2.366 AC	2.366						1326	General Petrol Corp	DD	9-8-38	not rec				
43433-E	"	0.083 AC	0.083						D-512	State to So. Calif. Edison Co	DD	6-27-72	03308-363				
43433-F	Standard Oil of Calif	0.042 AC	0.042				7-16-70	04773-858									
43433-G	Standard Oil of Calif to Richfield Oil Corp.	0.034 AC	0.034				7-16-70	04773-853									
43433-H	Standard Oil of Calif	0.178 AC	0.178				7-16-70	04773-859									
62770-1	Standard Oil of Calif	1.396 AC	1.396				8-9-73	05976-327									
62770-2	"	0.056 AC	0.056				"	"									
62770-3	"	3.228 AC	3.228				"	"									
7113695	See Map No 16902 C																
7113690	See Map No 17106 C																
7113652	See Map No 16902 C																

REVISION DATES	
REV. BY	DATE
BEW	7-26-66
BEW	11-29-66
LJ	8-11-67
LJ	12-8-67
C1	5-26-69
WQ	2-16-70
DOC	12-10-71

INTERSTATE
STATE OF CALIFORNIA
TRANSPORTATION AGENCY DEPARTMENT OF PUBLIC WORKS
DIVISION OF HIGHWAYS
R/W MAP
NO. F-1303-7
07-LA-5-45.2
SCALE 1"=100'
DATE 2-7-66
DRAFT G.L.W.
RWPE G.L.W.
APPROVED C. MOSELEY

LEGEND: ACCESS DENIAL LINE TOP OF CUT JOE OF FILL
UNLESS OTHERWISE NOTED ALL AREAS ARE IN SQUARE FEET
IF MORE THAN ONE BEARING AND DISTANCE ARE SHOWN FOR A LINE, THE ONE IN PARENTHESES IS PREVIOUS RECORD

F.M. 21628-7

F-1303 7