

B.P.A. REG. NO.	STATE	FEDERAL PROJECT NO.	EFFECTIVE DATE	SHEET NO.	TOTAL SHEETS
7	CALIF.	I-005-3791160	5-3-65	15	16

DISTRICT R/W AGENT. BUREAU OF PUBLIC ROADS DATE

PARCEL NO.	GRANTOR OR GRANTEE	TO BE ACQUIRED	AREA* EXCESS TOTAL	INST. DATE	RECORDING DATA O.R.
7UJ3628	So Calif Edison Co			7UJ 9-30-60	04148 714-116
C976	G. Walk et al	1583 Ac	2625Ac	Fee	10-12-72 U5633-156
C976-1	"	0.6284Ac	"	"	"
C976-2	"	.87	"	"	"
C976-3	"	7.35	"	"	"
D-C977	State to Mobil Oil Corp			D.D. 4-7-71	037819 331
D-C977.1	State to Atlantic Richfield Co			D.D. 4-7-71	017672 334
7UJ3485	Calif. Edison Co.			JU 7-2-68	"
7UJ3630	Mobil Oil Corp			JU 8-22-64	"
C977	N. Watson	11,106Ac	61,16Ac	Fee	3-18-69 L4310-315
C977-1	"	3,342Ac	"	"	"
68836-1	"	0.5784Ac	"	"	"
68836-1	"	0.6574Ac	"	"	"
C977-4	N. Watson to So Calif Edison	0.2674Ac	"	Fee	3-18-69 U5310-967
C977-5	"	1.024Ac	"	"	3-18-69 U4310-973
C977-6	Nola Watson	0.012Ac	"	"	3-18-69 L4310-315
C977-7	"	0.1694Ac	"	"	"
C977-8	N. Watson to So Calif Edison	0.1894Ac	"	"	3-18-69 U4310-970
C977-9	"	0.2034Ac	"	"	"
47242-1	S.P.R.R. Co	109,922	"	Ease	"
47242-7	"	17,052	"	"	"
47242-8	"	11,456	"	"	"
7UJ3652	Atlantic Richfield Co			7UJ 10-30-60	008 780
7UJ3652	Atlantic Richfield Co			7UJ 10-30-60	008 780

SEE MAP NO. 1303-7

SEE MAP NO. F-1304-6

SEE MAP NO. F-1055-4

PARCEL NO.	GRANTOR OR GRANTEE	AREA ACQ EXCESS TOTAL	INST. DATE	RECORDING DATA O.R.
DKC977.2	State to Calif Gas Co.		DK 3-21-74	06207-709
DKC976-1	State to Calif Edison Co.		DK 8-8-74	06375-296-7
47242-2	See Map F-1304-5			
47242-3	"			
47242-4	"			
47242-9	"			

REVISION DATES	
REV. BY	DATE
B.E.W.	2-7-66
R.W.R.	2-28-66
B.E.W.	7-28-66
"	12-1-66
"	3-14-67
"	6-20-67
L.J.	2-26-68
"	3-1-68
"	12-18-72

STATE OF CALIFORNIA
 TRANSPORTATION AGENCY DEPARTMENT OF PUBLIC WORKS
 DIVISION OF HIGHWAYS
 07-LA-5-RA5.4
APPRAISAL MAP
 Rte 5/14 Interchange to Sta. 23+00
 SCALE 1"=100' F-1055-1 FILE NO. 46902-G
 DRAFT L.J. DATE 1-10-66
 RWPE H.H. Hopkins APPROVED Weatherhalt

LEGEND: - - - - - ACCESS DENIAL LINE - - - - - TOP OF CUT - - - - - TOE OF FILL
 * UNLESS OTHERWISE NOTED ALL AREAS ARE IN SQUARE FEET
 IF MORE THAN ONE BEARING AND DISTANCE ARE SHOWN FOR A LINE, THE ONE IN PARENTHESES IS PREVIOUS RECORD.

F.M. 21630-1

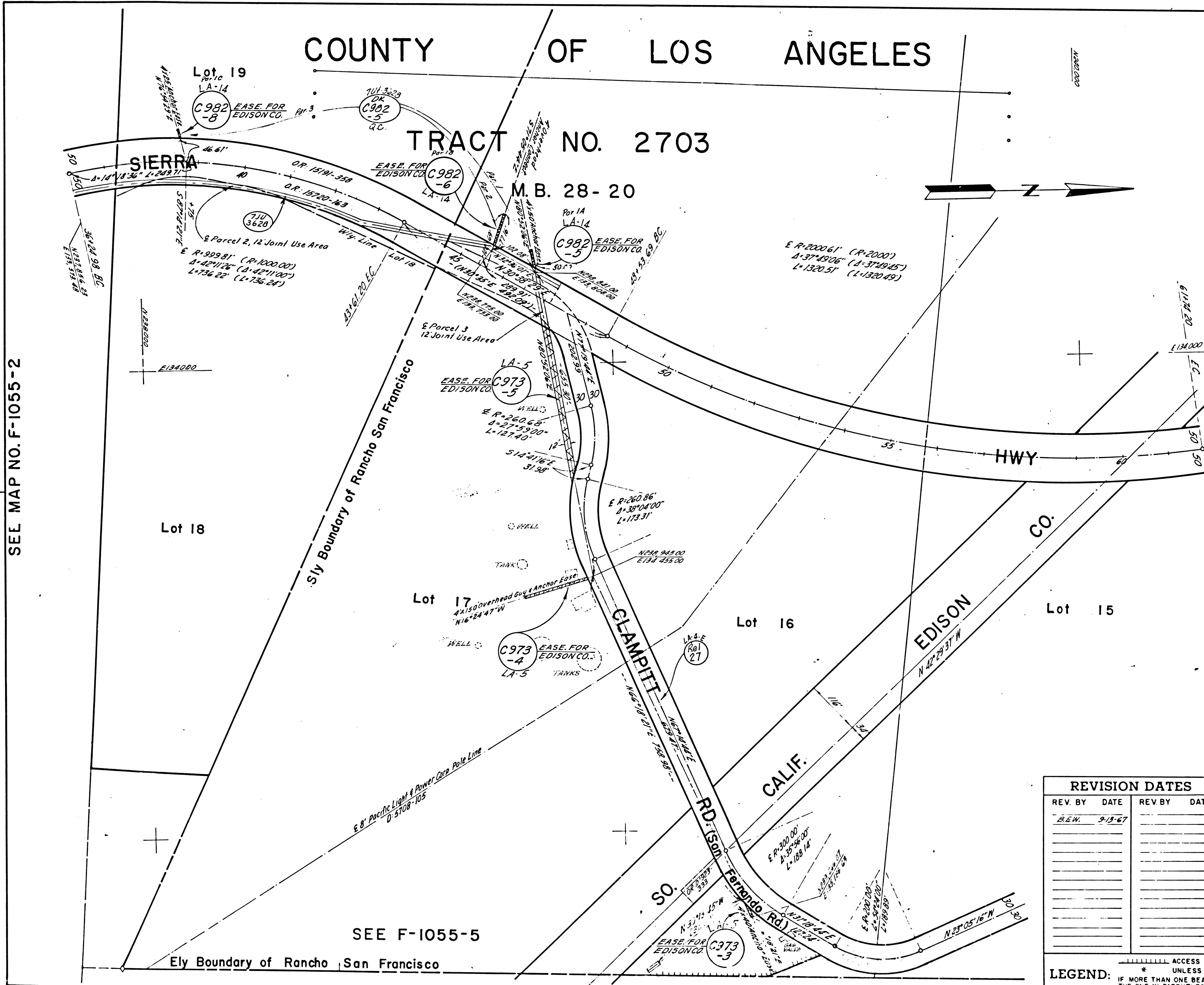
F-1055

COUNTY OF LOS ANGELES

TRACT NO. 2703

M.B. 28-20

SEE MAP NO. F-1055-2



SEE F-1055-5

Ely Boundary of Rancho San Francisco

REG. NO.	STATE	FEDERAL PROJECT NO.	EFFECTIVE DATE	SHEET NO.	TOTAL SHEETS
7	CALIF.	7-005-2-2163		4	4

PARCEL NO.	GRANTOR OR GRANTEE	TO BE ACQUIRED	AREA*		INST.	RECORDING DATA	
			EXCESS	TOTAL		DATE	O.R.
C973-3	Weatherall Refining Co.		107	408224	UPL	9-8-71	D5185-685
C973-4	"		351		UPL	9-8-71	D5185-685
C973-5	"		3799		UPL	9-8-71	D5185-685
C982-5	Gates, Kingsley & Gates		153	63,164	UPL	12-18-70	D4921-6
C982-6	"		286		"	"	"
C982-8	"		79		"	"	"
7103628	So. Calif. Edison Co.				710	5-12-68	D4147-336
DKC9825	So. Calif. Edison Co.				DK	12-19-75	7253-371
Rel 27	Co. of L. A.				Rel	3-23-31	D1089-227

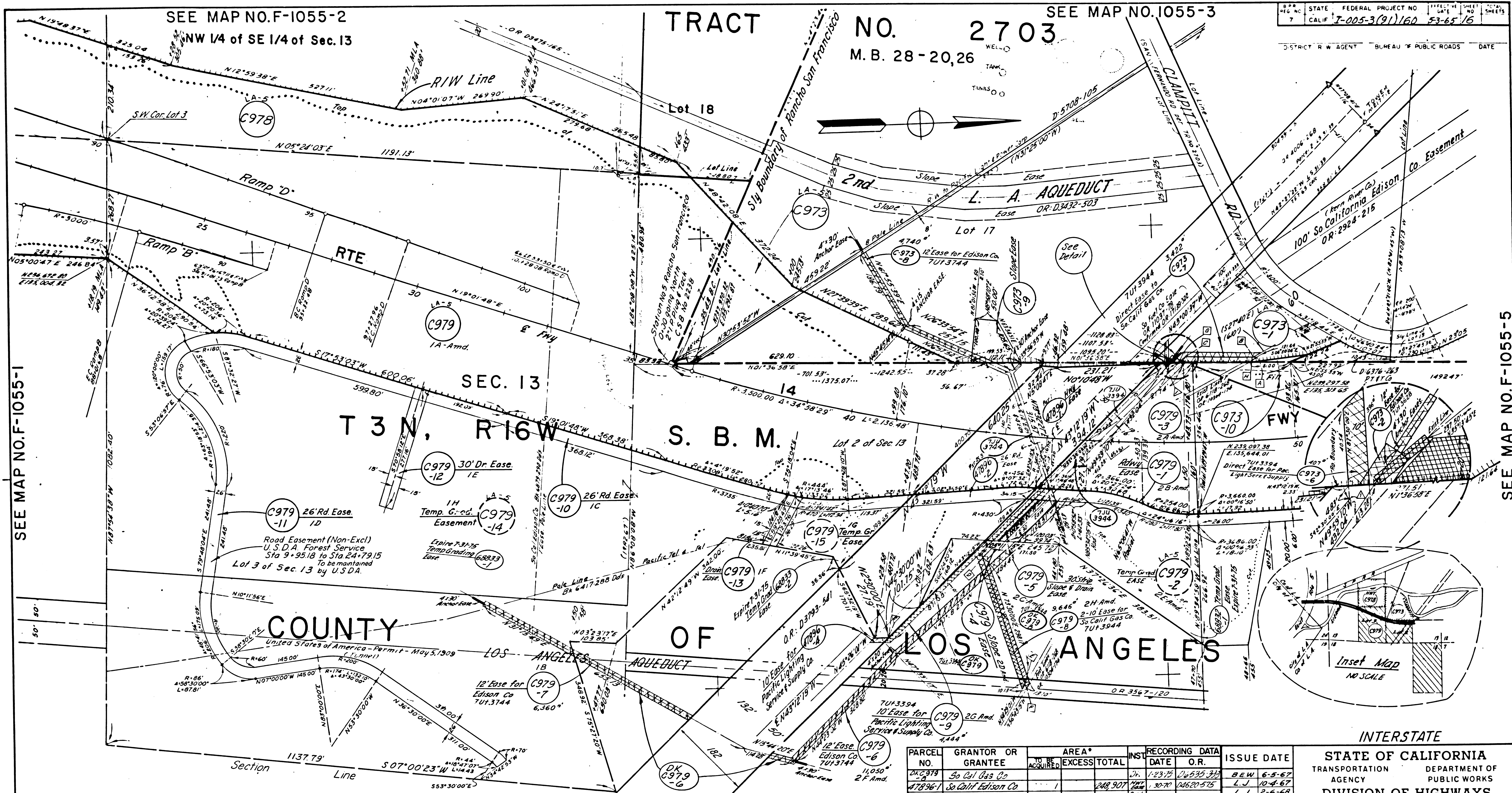
REVISION DATES			
REV. BY	DATE	REV. BY	DATE
B.E.W.	9-13-67		

INTERSTATE
 STATE OF CALIFORNIA
 TRANSPORTATION AGENCY DEPARTMENT OF PUBLIC WORKS
 DIVISION OF HIGHWAYS
 07-LA-5/14-RA5.4
APPRAISAL MAP
 Intersection of Sierra Hwy & Clampitt Rd
F-1055-3 FILE NO. 19420-6
 SCALE 1"=100' DATE 9-11-67
 DRAFT L.J. APPROVED Weatherholt
 RWPE H. Hoopkins

LEGEND:

- ACCESS DENIAL LINE
- TOP OF CUT
- TOE OF FILL
- UNLESS OTHERWISE NOTED ALL AREAS ARE IN SQUARE FEET
- IF MORE THAN ONE BEARING AND DISTANCE ARE SHOWN FOR A LINE, THE ONE IN PARENTHESES IS PREVIOUS RECORD

F.M. 21630-3



SEE MAP NO. F-1055-1

SEE MAP NO. 1055-3

STATE FEDERAL PROJECT NO. 7-005-3(91)160
 DISTRICT R.W. AGENT BUREAU OF PUBLIC ROADS DATE

SEE MAP NO. F-1055-5

10' Easement for Pacific Lighting Service and Supply Co.
 A to B 842°30'00"E 871.38'

2-10' Easement for So. Calif. Gas Co.

A to B	S 1° 36' 38" W	17.76'
B to C	S 1° 36' 38" W	18.78'
C to D	S 42° 30' 00" E	6.32 98"
D to E	N 73° 30' 00" E	2.98 17"
E to F	N 73° 30' 00" E	10.15'
F to G	N 42° 30' 00" W	18.36"

PARCEL NO.	GRANTOR OR GRANTEE	TO BE ACQUIRED	AREA* TOTAL	INST. DATE	RECORDING DATA	PARCEL NO.	GRANTOR OR GRANTEE	TO BE ACQUIRED	AREA* TOTAL	INST. DATE	RECORDING DATA
C979-6	So. Calif. Edison Co.		4.1,149'	10-12-72	D5633-156	C973-1	Newhall Refining Co.		3,478Ac	9-8-71	D5184-669
C979-10	L.C. Neely		37,893'			C973-2	Newhall Refining Co. to Pacific Lightng Service and Supply Co.		0,127Ac	9-8-71	D5184-669
C979-11	"		7,535'			C973-3	Newhall Refining Co. to Pacific Lightng Service and Supply Co.		396	9-8-71	D5185-684
C979-12	"		7,535'			C973-4	Newhall Refining Co. to Pacific Lightng Service and Supply Co.		407	9-8-71	D5185-688
C979-13	"		2,896'			C973-5	Newhall Refining Co. to Pacific Lightng Service and Supply Co.		3,422	9-8-71	D5185-688
68833-1	Letourneur		23,035Ac	3-25-74	D6210-642	C973-6	Newhall Refining Co. to Pacific Lightng Service and Supply Co.		4,740	9-8-71	D5185-688
68833-2	"		0,475Ac			C973-7	Newhall Refining Co. to Pacific Lightng Service and Supply Co.		0,178Ac	9-8-71	D5184-669
7113944	So. California Gas Co.			JUN 8-22-70		C973-8	Newhall Refining Co. to Pacific Lightng Service and Supply Co.		0,016Ac	9-8-71	D5184-669
7113744	So. California Edison Co.			JUN 8-2-68		C973-9	Tidewater Oil Co.		3,639Ac	11-7-67	D3822-301
7113394	Pacific Lighting Service Co.			JUN 7-14-81		C973-10	Letourneur		37,98Ac	3-25-74	D6210-642
C979-14	Letourneur			3-25-74	D6210-642	C979-15	Letourneur		4,444	10-12-72	D5633-156

PARCEL NO.	GRANTOR OR GRANTEE	TO BE ACQUIRED	AREA* TOTAL	INST. DATE	RECORDING DATA	ISSUE DATE
47896-1	So. Calif. Gas Co.		248,901'	1-30-70	D4620-575	L.J. 10-4-67
47896-2	"		7,041'	1-30-70	D4620-575	L.J. 2-6-69
47896-3	"			1-30-70	D4620-575	L.J. 2-7-69
47896-4	"			1-30-70	D4620-575	L.J. 3-28-69
47896-5	"			1-30-70	D4620-575	R.J.K. 10-28-68
47896-6	"			1-30-70	D4620-575	R.E.L. 2-13-69
47896-7	"			1-30-70	D4620-575	G.E.K. 1-7-71
47896-8	"			1-30-70	D4620-575	L.J. 12-18-72

INTERSTATE
 STATE OF CALIFORNIA
 TRANSPORTATION DEPARTMENT OF PUBLIC WORKS
 AGENCY DIVISION OF HIGHWAYS
 Rte. 5/14 Sta. 21+00
 to Sta. 53+00
F-1055-4
 NO. 16903-C
 07-LA 5 - 45.4
 SCALE 1"=100' DATE 12-30-65
 RWPE H. Hopkins SR Weatherholt

LEGEND:
 ACCESS DENIED EXCLUDES STREET AREA
 AREA IN SQUARE FEET UNLESS OTHERWISE NOTED
 PREVIOUS RECORD DATA INCLUDES EASEMENT AREA

F.M. 21630-4

F-1055

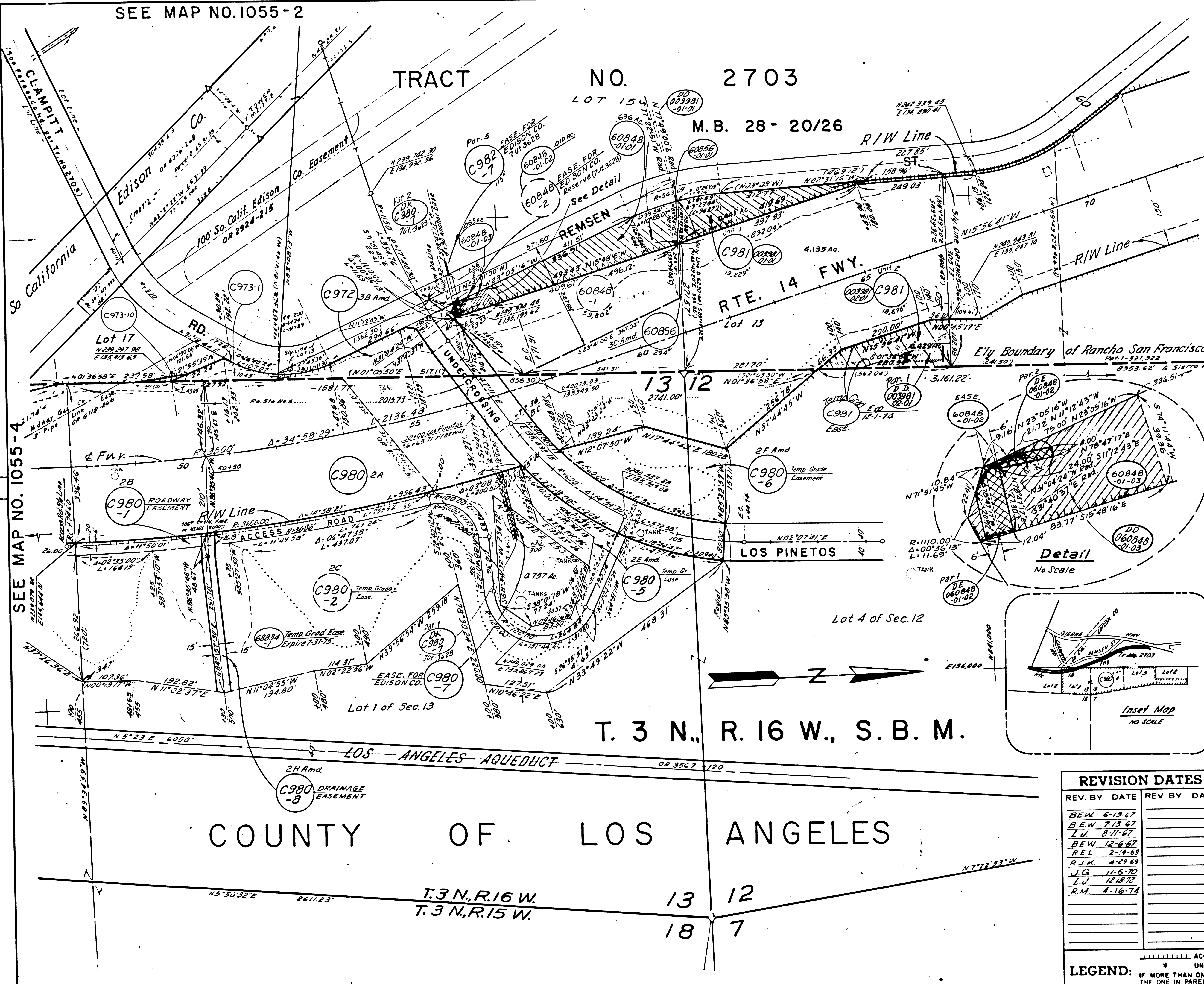
SEE MAP NO. 1055-2

STATE	FEDERAL PROJECT NO.	EFFECTIVE DATE	SHEET NO.	TOTAL SHEETS
CALIF.				

DISTRICT R/W AGENT BUREAU OF PUBLIC ROADS DATE

PARCEL NO.	GRANTOR OR GRANTEE	NO. AC.	EXCESS	TOTAL	INST.	RECORDING DATE	O. R.
C972	L. C. Neely	34.136		34.136	Fee	10-21-70	6381-325
60856	"	27.009	294	27.009	Fee	"	"
60848	I. D. Parton, et ux	90.335	30.533	90.335	Fee	2-3-70	D4623-504
C980	E. A. Clampitt et al	80.9 AC		101.90 AC	Fee	10-21-70	6381-325
C980-1	"	"	"	0.788 AC	Fee	"	"
C980-2	Letourneur	6.665 AC			Fee	3-25-74	D6210-642
C980-5	"	0.830 AC			Fee	10-21-70	6381-325
C980-6	"	1.041 AC			Fee	"	"
C980-7	"	0.039 AC			Fee	"	"
C980-8	"	0.233 AC			Fee	10-21-70	6381-325
C981	J. A. Bollinger et ux	5.005 AC	0.570 AC	5.005 AC	Fee	1-22-69	D4257-983
C982-7	Gates, Kingsley & Gates	115		29.8 AC	Fee	12-18-70	D4921-6
C982-1	Clampitt	6.665 AC			Fee	"	"
DE 6381-325	State to Edison Co				D.E.	6-21-74	D6318-926
DE 6381-325	U.S. Dept of Trans. F.A.A.				D.D.	2-6-75	D6350-719
DE 6381-325	Hawaii Refining Co				D.D.	3-20-75	D6392-944
DE 6381-325	So. Cal Edison Co				D.K.	6-19-75	D6394-420
DE 6381-325	MESSICK				D.D.	8-28-75	D6775-660

SEE MAP NO. F-1055-6



SEE MAP NO. 1055-4

REVISION DATES	
REV BY	DATE
BEW	6-13-67
BEW	7-13-67
L.J.	8-11-67
BEW	12-6-67
REL	2-4-69
R.J.K.	4-29-69
J.G.	11-6-70
L.J.	12-8-72
R.M.	4-16-74

STATE OF CALIFORNIA
TRANSPORTATION AGENCY DEPARTMENT OF PUBLIC WORKS
DIVISION OF HIGHWAYS
07-LA-14-R25.5
APPRAISAL MAP
Sta. 47+00 to Sta. 72+00
SCALE 1"=100' F-1055-5 FILE NO. 16833-C
DRAFT L.J. DATE 12-27-65
RWPE H.H. HOPKINS APPROVED Weatherholt

LEGEND: ----- ACCESS DENIAL LINE ----- TOP OF CUT ----- TOE OF FILL
* UNLESS OTHERWISE NOTED ALL AREAS ARE IN SQUARE FEET
IF MORE THAN ONE BEARING AND DISTANCE ARE SHOWN FOR A LINE, THE ONE IN PARENTHESES IS PREVIOUS RECORD. ▲ INCLUDES AREA OF EASE. (IF ANY)

F.M. 21630-5

F-1055-5