

FOR CONTINUATION SEE MAP NO. F-1076-2

FOR CONTINUATION SEE MAP NO. F-1077-2

STATE	FEDERAL PROJECT NO.	SHEET NO.	TOTAL SHEETS
CALIF.		55	

PARCEL NO.	GRANTOR OR GRANTEE	AREA*	EXCESS		RECORDING DATA
			NO. ACQUIRED	TOTAL	
C1486	R.H. Cooper, et al	1.170 Ac.	4.811 Ac.	Fee	10-14-66 03455-390
C1486-1	"	4.963 0	4.811 Ac.	Fee	10-14-66 03455-390
C1486-2	"	7.823 0	4.811 Ac.	Fee	
C1487	Anderson C. Simms, et al	4.810 Ac.	0.203 Ac.	Fee	1-21-66 03183-139
C1488	Jennie Dandulake, et al	3.201 Ac.	4.811 Ac.	Fee	2-4-66 03198-304
C1488-1	"	0.828 Ac.	4.811 Ac.	Fee	2-4-66 03198-304
C1489	Albert S. Madlinsgetal	0.501 Ac.	4.811 Ac.	Fee	5-27-70 04724-953
C1490	Frank G. Smith, et ux	2.801 Ac.	5.121 Ac.	Fee	3-10-67 03580-829
C1491	George Di Bella	2.558 Ac.	0.068 Ac.	2.565 Ac.	Fee 2-9-66 03202-258
C1492	Carl A. Read, et ux	2.558 Ac.	2.297 Ac.	2.561 Ac.	Fee 7-6-66 03356-923
C1492-1	Carl A. Read, et al	4.647 0	2.561 Ac.	Fee	
C1492-2	Carl A. Read, et al	9.222 0	2.561 Ac.	Fee	
47730	Jennie Dandulake, et al	1.579 Ac.	1.183 Ac.	1.579 Ac.	Fee 5-17-68 04004-730
P-C1487	State to Arno M. Johnson				D.D. 1-11-71 46999-49443
D-C1486-1	State to White Farms Water Co.				3-14-69 04308-202/104
D-C1488	State to Cochran				D.D. 5-27-70 024719-880

REVISION DATES	
REV. BY	DATE

STATE OF CALIFORNIA
 TRANSPORTATION DEPARTMENT
 AGENCY PUBLIC WORKS
 DIVISION OF HIGHWAYS

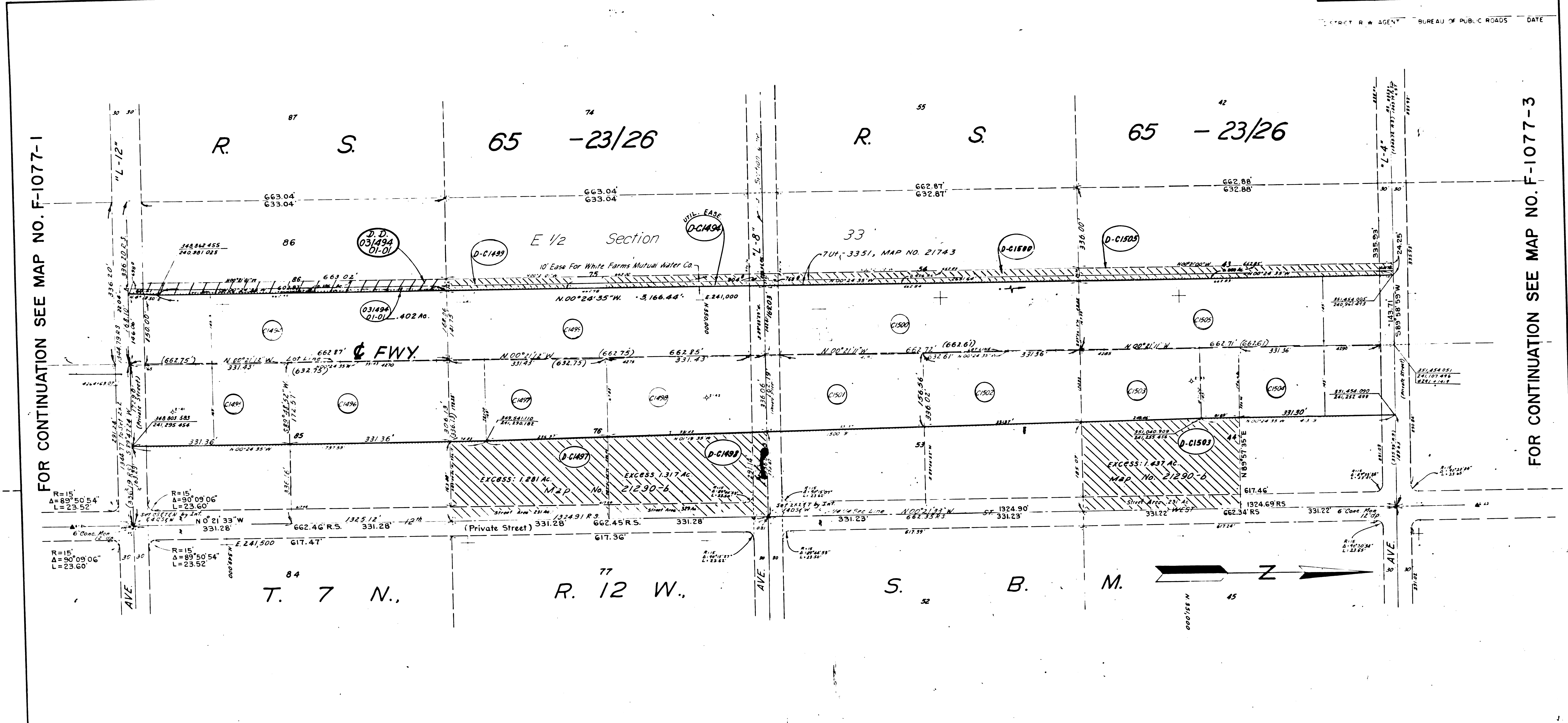
R/W MAP
 NO. F-1077-1
 07-LA-14-64.8

100 FILE NO. 15607-C
 DATE 4-7-65
 RWPE TOMITA SR BERG

LEGEND:

- ACCESS DENIED
- EXCLUDES STREET AREA
- * AREA IN SQUARE FEET UNLESS OTHERWISE NOTED
- () PREVIOUS RECORD DATA

FM 21648-1



FOR CONTINUATION SEE MAP NO. F-1077-1

FOR CONTINUATION SEE MAP NO. F-1077-3

See 12053 in File Room

PARCEL NO.	GRANTOR OR GRANTEE	AREA* (ACRES)			INST.	RECORDING DATA	
		TO BE ACQUIRED	EXCESS	TOTAL		DATE	O.R.
C-1494	William E. McBurney	2.558	0.402	2.558	Fee	4-4-66	D3259-603
C-1495	Blanca Benites	1.314		2.557	Fee	10-7-65	D3073-943
C-1496	Victor C. Foley, et ux	1.312		2.557	Fee	1-28-66	D3190-356
C-1497	George H. Brown, et ux	2.557	1.281	2.557	Fee	3-28-66	D3250-787
C-1498	Senell Murrell, et ux	2.556	1.317	2.556	Fee	2-25-66	D3218-323
C-1499	Edward H. Nagel, et ux	2.557	0.392	2.557	Fee	1-3-66	D3163-757
C-1500	Armando L. Acevedo, et ux	2.556	0.406	2.556	Fee	8-5-65	D3004-711
C-1501	Meridith L. Harville, et ux	1.212		2.556	Fee	10-28-65	D3096-433
C-1502	Stanley F. Piel, et ux	1.169		2.555	Fee	5-9-66	D3297-874
C-1503	Charles R. Daws, et ux	2.555	1.437	2.555	Fee	9-1-66	D3416-19
C-1504	Lillian Mitkinson	1.114		2.555	Fee	8-5-65	D3004-748
C-1505	Charles M. Adams, et ux	2.556	0.316	2.556	Fee	12-20-65	D3150-684
D-C1494	State to White Farms Mutual Water Co.				DD	6-17-69	D4404-318
D-C1505	State to J.E. Farm				DD	1-4-71	D4933-316
D-C1499	State to J.E. Farm				DD	4-2-71	D-9015-744
D-C1497	State to E.W. Atkins et ux				DD	3-10-71	D4992-1175

ISSUE DATE

STATE OF CALIFORNIA
 TRANSPORTATION DEPARTMENT OF
 AGENCY PUBLIC WORKS
 DIVISION OF HIGHWAYS

R/W MAP
 NO. F-1077-2
 07-LA-14-65.2
 FILE NO. 13622-C
 DATE 9-21-67

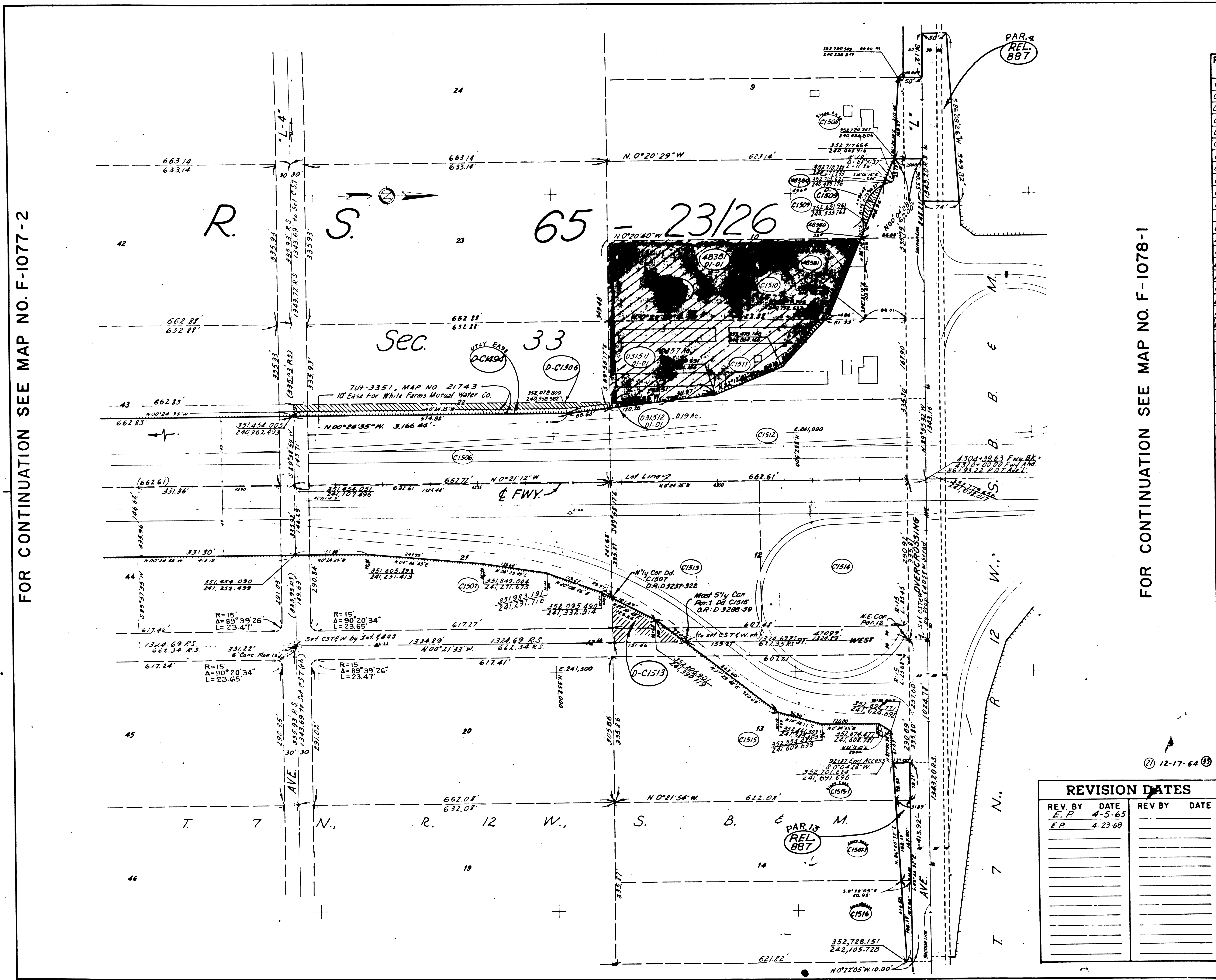
RWPE TOMITA SR BERG

LEGEND:

- ACCESS DENIED
- EXCLUDES STREET AREA
- AREA IN SQUARE FEET UNLESS OTHERWISE NOTED
- PREVIOUS RECORD DATA

FM 21648-2

FOR CONTINUATION SEE MAP NO. F-1077-2



STATE	FEDERAL PROJECT NO.	EFFECTIVE DATE	SHEET NO.	TOTAL SHEETS
CALIF.			7	

PARCEL NO.	GRANTOR OR GRANTEE	TO BE ACQUIRED	AREA	TOTAL	INST.	RECORDING DATA	
						DATE	O.R.
C1506	H.C. Warren, et ux	2.555Ac	15,409'	2.56Ac	Fee	3-21-66	D3243-347
C1507	A.B. Lewis, et ux	2.559Ac		5.11Ac	Fee	3-15-66	D3237-322
C1507-1	W.E. Hand, et ux	4.436Ac		2.40Ac	Este	5-13-66	D3303-733
C1508	W.H. Doster, et ux	2.525Ac		2.40Ac	Fee	4-7-66	D3263-648
C1509	D.P. Putnam, et ux	2.237Ac	1,392'	2.40Ac	Fee	3-15-66	D3237-289
C1510	R. Simonian, et al	1.491Ac		2.40Ac	Fee	4-25-66	D3281-662
C1511	S.G. Yanez, et ux	2.40Ac	1,357Ac	2.40Ac	Fee	2-17-66	D3210-571
C1512	H.J. Warnock, et ux	2.40Ac	813'	2.40Ac	Fee	11-22-65	D3122-150
C1513	D.M. Erickson, et ux	2.400Ac	0.180Ac	2.40Ac	Fee	8-18-66	D3401-680
C1514	B. Garrido, et ux	2.400Ac		2.40Ac	Fee	11-3-66	D3472-767
C1515	C.C. Carney, et ux	1.495Ac		4.80Ac	Fee	4-29-66	D3288-59
C1515-1	"	2.694Ac		4.80Ac	Este	4-29-66	D3288-59
C1516	Helfler-Medinsky Etlco	2.598Ac		2.40Ac	Este	8-17-66	D3400-530
48380	D.P. Putnam, et ux	529'		2.165Ac	Fee	4-21-69	D4344-618
48381	R. Simonian, et al	2,059Ac	1,906Ac	2.059Ac	Fee	4-21-69	D4344-275
D-C1504	State to White Fangs				AD	6-17-69	D4404-906
D-C1509	State to D. Putnam, et ux				D.D.	7-16-69	D4437-117
D-C1513	State to C. Carney, et ux				D.D.	11-10-70	D4884-388
D-C1506	State to M.H. Sheets				D.D.	11-1-71	D-3242-785
REL 887	City of L.A. Co.				Re	6-5-74	R4486-533
	Putnam				DD	11-8-74	D6469-720

FOR CONTINUATION SEE MAP NO. F-1078-1

REVISION DATES			
REV. BY	DATE	REV. BY	DATE
E.P.	4-5-65		
E.P.	4-23-68		

ISSUE DATE

STATE OF CALIFORNIA
TRANSPORTATION DEPARTMENT OF
AGENCY PUBLIC WORKS
DIVISION OF HIGHWAYS

R/W MAP
NO. F-1077-3
07-LA-14-65.6

100 FILE NO. 15605-C
DATE 3-4-65

RWPE TOMITA SR. BERG

LEGEND: ACCESS DENIED + EXCLUDES STREET AREA
* AREA IN SQUARE FEET UNLESS OTHERWISE NOTED
() PREVIOUS RECORD DATA

FM 21648-3