

NO.	NAME	DESCRIPTION	REFERENCE	REMARKS
1	VI-BR	FD CO ENGR TAG	SR 73-003-9	
2	COM C-4B	COM MON DESTROYED BY CONSTR	SR 73-003-21	N 4,066,085.93
3	BR PI-1	SET BT SPK & W AT INT	SR 73-189-51	E 4,203,593.98
4	WA-BR PI-2	FD SPK & W MKD LA CO RD DEPT	SR 73-189-51	
5	168-BR	FD BR TACK	SR 73-003-33	
6	GA-WA	FD L&N IN P.C.C.	SR 73-003-35	
7	COM C-3	FD MON IN WELL	SR 73-003-34	N 4,066,591.34
8	COM D-3	FD MON IN WELL SET 242 B TONS	SR 73-003-53	E 4,204,469.17
9	R/W COR	FD 242 B T	SR 76-006-6	N 4,067,092.11
10	BC FWY	SET BT SPK & W	SR 75-189-51	E 4,204,521.38
11	COM D-4C	FD MON IN WELL	SR 73-003-23	
12	MA-SFR	FD L&T	SR 75-189-6,23	
13	VI-MA	FD L&T WITH TAG	SR 73-003-9	
14	R/W COR	FD 242 B T	SR 76-006-6	
15	R/W COR	FD 242 B T	SR 76-006-7	
16	R/W COR	SET C.D.H. TAG IN L.D. IN P.C.C. FENCE POST BASE	SR 76-006-7	
17	BC ART.	FD SPK T & W	SR 75-189-6,23	
18	R/W COR	SET NL & C.D.H. TAG IN L.D. IN P.C.C. FENCE POST BASE	SR 76-006-7	
19	R/W COR	SET NL & C.D.H. TAG IN L.D. IN P.C.C. FENCE POST BASE	SR 76-006-8	
20	PI-VI	FD CO ENGR TAG	SR 73-003-9,10	
21	PI-1 ART	FD C-SPK & W O.3 DN	SR 75-189-6,23	
22	SFR-RP	SET BT SPK & W	SR 75-189-6,23	
23	POT SFR	SET BT SPK & W	SR 75-189-23	
24	R/W COR	SET 242, C.D.H. TAG & NL	SR 76-006-8	
25	R/W COR	SET BR CAP IN P.C.C.	SR 76-006-8	
26	R/W COR	SET CHIS "X" ON P.C.C. BASE OF FENCE POST	SR 76-006-8	
27	R/W COR	FD 242, RESET C.D.H. TAG & NL	SR 76-006-8	
28	R/W COR	SET NL IN P.C.C. BASE OF FENCE POST	SR 76-006-9	
29	R/W COR	SET C.D.H. TAG & NL IN P.C.C. FOR BLOCK WALL	SR 76-006-9	
30	R/W COR	FD 242, RESET C.D.H. TAG & NL	SR 76-006-9	
31	E.C. ART.	FD 242 B T	SR 75-189-6,23	
32	POT D'ART	FD CHIS "X" ON P.C.C. TRAFFIC ISL NOSE	SR 75-189-24	
33	SFR-RP	SET BT SPK & W	SR 75-189-6,23	
34	PI-1 SFR	SET BT SPK & W BY INT	SR 75-189-24	
35	POT E'ART	FD 12 B NL	SR 75-189-25	
36	R/W COR	SET CHIS "X" ON P.C.C. FENCE POST BASE	SR 76-006-9	
37	R/W COR	FD 242 B T	SR 76-006-9	
38	R/W COR	NOTHING SET	SR 76-006-10	
39	R/W COR	SET CHIS "X" ON P.C.C. BASE OF FENCE POST	SR 76-006-10	
40	POT E-1	FD PK NL	SR 75-189-6,25	
41	SFR-RP	SET BT SPK & W	SR 75-189-6,25	

TO OBTAIN GROUND LEVEL DISTANCES, MULTIPLY GRID DISTANCES SHOWN BY 1.00000180. GRID WAS ESTABLISHED FROM THE LOS ANGELES COUNTY SURVEY CONTROL STATIONS.

LEGEND

- △ SURVEY CONTROL POINTS
- POINTS OF SURVEY
- ANGLE POINTS
- SECTION CORNERS, RANCHO CORNERS
- R RECORDED VALUE AS ESTABLISHED PREVIOUSLY
- () VALUE ESTABLISHED BY DISTRICT 7 RIGHT OF WAY BRANCH

NOTE

- BEARINGS ARE BASED ON THE CALIFORNIA COORDINATE SYSTEM, DIVISION 8, SECTION 8809 OF THE 1953 PUBLIC RESOURCES CODE.
- DEPARTMENT OF TRANSPORTATION SURVEY INFORMATION IS AVAILABLE FROM THE SURVEY SECTION OF THE ENGINEERING SERVICES BRANCH, LOS ANGELES, CALIFORNIA.
- DEPARTMENT OF TRANSPORTATION RIGHT OF WAY INFORMATION IS AVAILABLE FROM THE RIGHT OF WAY BRANCH, LOS ANGELES, CALIFORNIA.
- STATIONING SHOWN ON THIS MAP IS FOR REFERENCE ONLY.

IN LOS ANGELES COUNTY

BLK. 0620 MOD. 65

IN THE CITIES OF CARSON AND COMPTON
ALONG FORMER ARTESIA BLVD.
FROM MAIN ST. TO ACACIA ST.

CONSTRUCTION CONTRACT NO. 07-040944 COMPLETION DATE: JAN. 1976.

ORIGINAL SCALE: 1" = 100'

100 200 300 400 500 FEET

LOS ANGELES COUNTY FILE NO.

STATE OF CALIFORNIA - DEPARTMENT OF TRANSPORTATION - SURVEYS			
DISTRICT	COUNTY	ROUTE	POST MILES - TOTAL PROJECT
07	LA	69-96	1
SHEET NO. 1 TOTAL SHEETS 5 CHART OF PARTY B. SPINDLER OFFICE SUPERVISOR DON EBERLY			
MONUMENTATION MAP MAP NO. LA 91 M-6.5 CHECKED BY J. KRAEZEWA PROJECT ENGINEER J. KRAEZEWA DRAWN BY J. KRAEZEWA DATE 2-2-1976			
CALIFORNIA COORDINATE SYSTEM - ZONE 7 DATA 2-2-1976			

FM 21655-1

RANCHO

SAN

PEDRO

PAT. 1 - 119 / 121

PARCEL MAP NO. 2505

P.M. 39 - 9 / 11

R. S. 82 - 31 / 32

RTE. L.A. - 91

FRONTAGE

FWY.

TRACT NO. 23924

M.B. 757 - 3 / 8

TRACT NO. 28669

M.B. 785 - 42 / 47

R. S. 82 - 31 / 32

TRACT NO. 3461

M.B. 38 - 87

CITY

OF

CARSON

VICTORIA

ST.

BITTERLAKE

TR. NO. 25491

M.B. 750 - 66 / 68

NO.	NAME	DESCRIPTION	REFERENCE	REMARKS
1	R/W COR.	FD 212 B.T.	SR76-006-10	
2	VI-AV	FD LA CO ENGR TAG	SR73-003-11	
3	POT AV	FD 242 B.T. UNDER TOWER NO. 1342	SR75-189-25,26	
4	PI-AV	FD SPK IN CONC. CYL. B.I.P.	SR75-189-26,27	
5	R/W COR.	FD 212 B.T. 2' ON BETW	SR76-006-10	
6	AR-AV	FD SPK B.W.	SR73-003-24	N 4,066,199.34
7	NFR-AV	BEGIN NFR	SR75-189-15,28,29	E 4,207,429.13
8	WA-AV	FD SPK B.W.	SR73-003-3,8,39	
9	AV I-2	FD SPK B.W.	SR73-003-37	
10	BC-1-WA	FD HEX. HD. BOLT B.T.	SR73-003-39	
11	GA-AV	FD STD. MON. IN WELL MKD	SR73-003-36	
12	POT-AT	FD SPK B.W. MKD. LA CO RD. DEPT.	SR73-003-12	
13	WA PI-1	FD PK NL	SR73-003-39	
14	NFR R.P.	SET BT. SPK B.W. - PO. ST.	SR75-189-15,29	
15	PI-1 NFR	SET BT. SPK B.W. BY INT.	SR75-189-15,29	
16	POT U-ART	FD SPK B.W.	SR75-189-29	
17	SFR R.P.	SET BT. SPK B.W.	SR75-189-29	
18	POT	FD SPK B.T.	SR73-003-12	
19	PI-2 SFR	SET BT. SPK B.W.	SR75-189-29	
20	EC-1-WA	FD HEX. HD. BOLT B.T.	SR73-003-39	
21	BC-2-WA	FD HEX. HD. BOLT B.T.	SR73-003-40	
22	INT	FD BT. SPK B.W. RCE 8332	SR73-003-40	
23	PI-2 NFR	SET BT. SPK B.W.	SR75-189-15	
24	PI-2 WA	SET SPK B.W.	SR73-003-40	
25	SFR-RAIN	SET BT. SPK B.W.	SR75-189-8	
26	BC-ART	FD I-2 B.T.	SR75-189-30	
27	EC-2 WA	FD BT. SPK B.T.	SR73-003-40	
28	NFR R.P.	SET C-NL AT E.P.	SR75-189-16,30	
29	PI-2 ART	FD BT. SPK B.W.	SR75-189-8,30	
30	SFR R.P.	SET BT. SPK B.W.	SR75-189-8,30	
31	EC-2 ART	FD 2x2 B.T.	SR75-189-30	
32	PI-3 SFR	SET BT. SPK B.W.	SR75-189-8,30	
33	NFR R.P.	SET C-NL AT E.P.	SR75-189-16,31	
34	POT-K-ART	FD 2x2 B.T.	SR75-189-8,16,31	
35	SFR R.P.	SET CALTRANS DISC.	SR75-189-9,31	
36	WA-MAR	FD SPK. T.B.W. 0.14 SOUTH	SR73-003-40	
37	VI-TA	FD SPK B.W. MKD	SR73-003-13	
38	NFR R.P.	SET C-NL ON LN. AT E.P.	SR75-189-16,32	
39	POT-K-ART	FD I-2 B.T.	SR75-189-9,16,32	DESTROYED IN CON.
40	SFR R.P.	SET CALTRANS TAG	SR75-189-9,32	

TO OBTAIN GROUND LEVEL DISTANCES MULTIPLY GRID DISTANCES SHOWN BY 1.00000180
GRID WAS ESTABLISHED FROM THE LOS ANGELES COUNTY SURVEY CONTROL STATIONS:
"COM D-3" N 4,067,092.11 E 4,204,521.98
"COM D-4" N 4,066,077.38 E 4,204,530.55

LEGEND
A SURVEY CONTROL POINTS
O POINTS OF SURVEY
ANGLE POINTS
SECTION CORNERS, RANDOM CORNERS
RECORDED VALUE AS ESTABLISHED PREVIOUSLY
() VALUE ESTABLISHED BY DISTRICT 7 RIGHT OF WAY BRANCH

NOTE
1. BEARINGS ARE BASED ON THE CALIFORNIA COORDINATE SYSTEM, DIVISION 8, SECTION 8809 OF THE 1983 PUBLIC RESOURCES CODE.
2. DEPARTMENT OF TRANSPORTATION SURVEY INFORMATION IS AVAILABLE FROM THE SURVEY SECTION OF THE ENGINEERING SERVICES BRANCH, LOS ANGELES, CALIFORNIA.
3. DEPARTMENT OF TRANSPORTATION RIGHT OF WAY INFORMATION IS AVAILABLE FROM THE RIGHT OF WAY BRANCH, LOS ANGELES, CALIFORNIA.
4. STATIONING SHOWN ON THIS MAP IS FOR REFERENCE ONLY.

IN LOS ANGELES COUNTY

BLK. 0620 MOD. 69

IN THE CITIES OF CARSON AND COMPTON

ALONG FORMER ARTESIA BLVD

FROM MAIN ST. TO ACACIA ST.

CONSTRUCTION CONTRACT NO. 07-040944 COMPLETION DATE: JAN. 1976

ORIGINAL SCALE: 1" = 100'

100 200 300 400 500 FEET

LOS ANGELES COUNTY FILE NO.

STATE OF CALIFORNIA	DEPARTMENT OF TRANSPORTATION	SURVEYS
DISTRICT COUNTY ROUTE POST MILES - TOTAL PROJECT	SHEET NO. TOTAL SHEETS	DATE
07 LA 91 6.9 - 9.6	2 5	

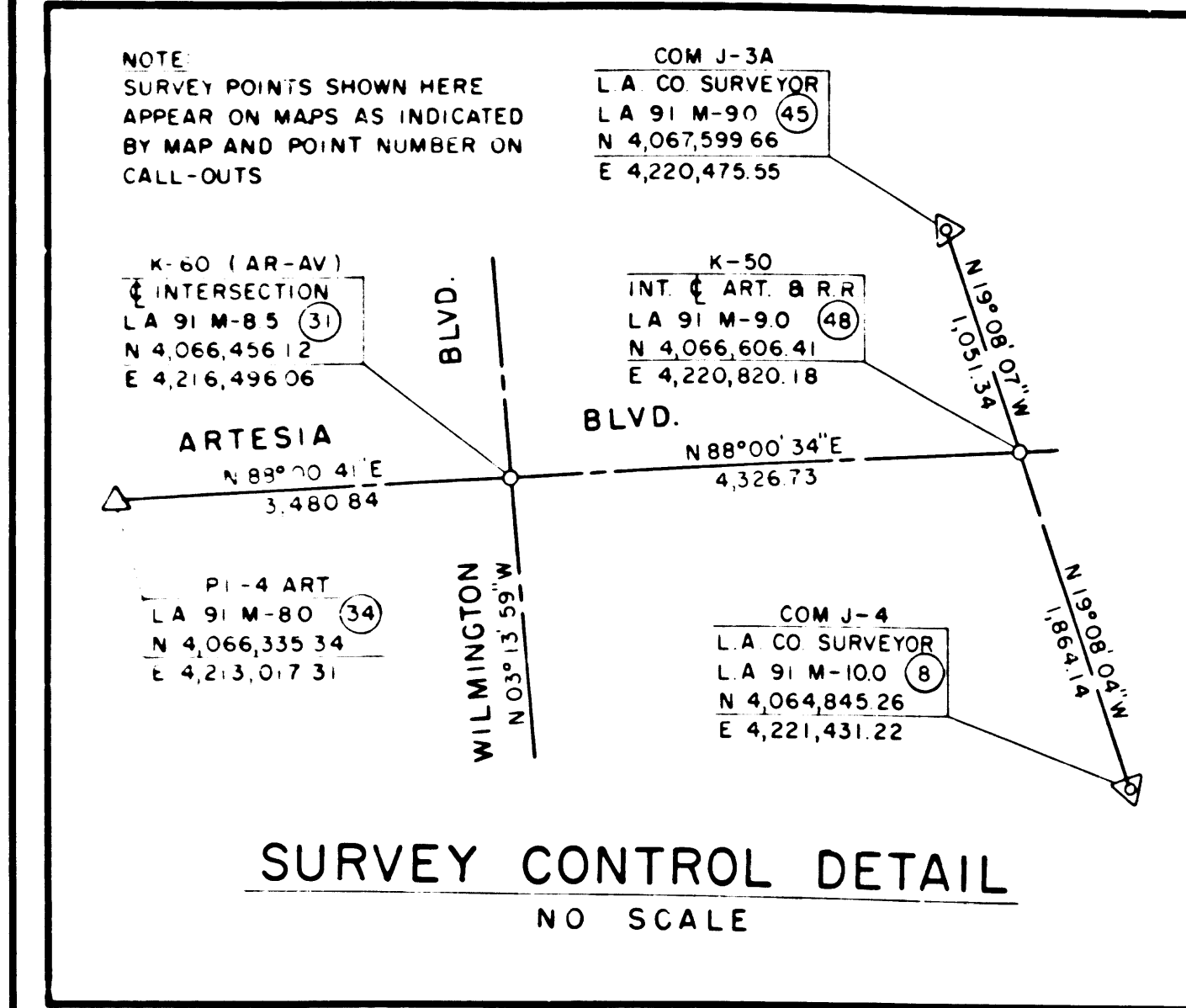
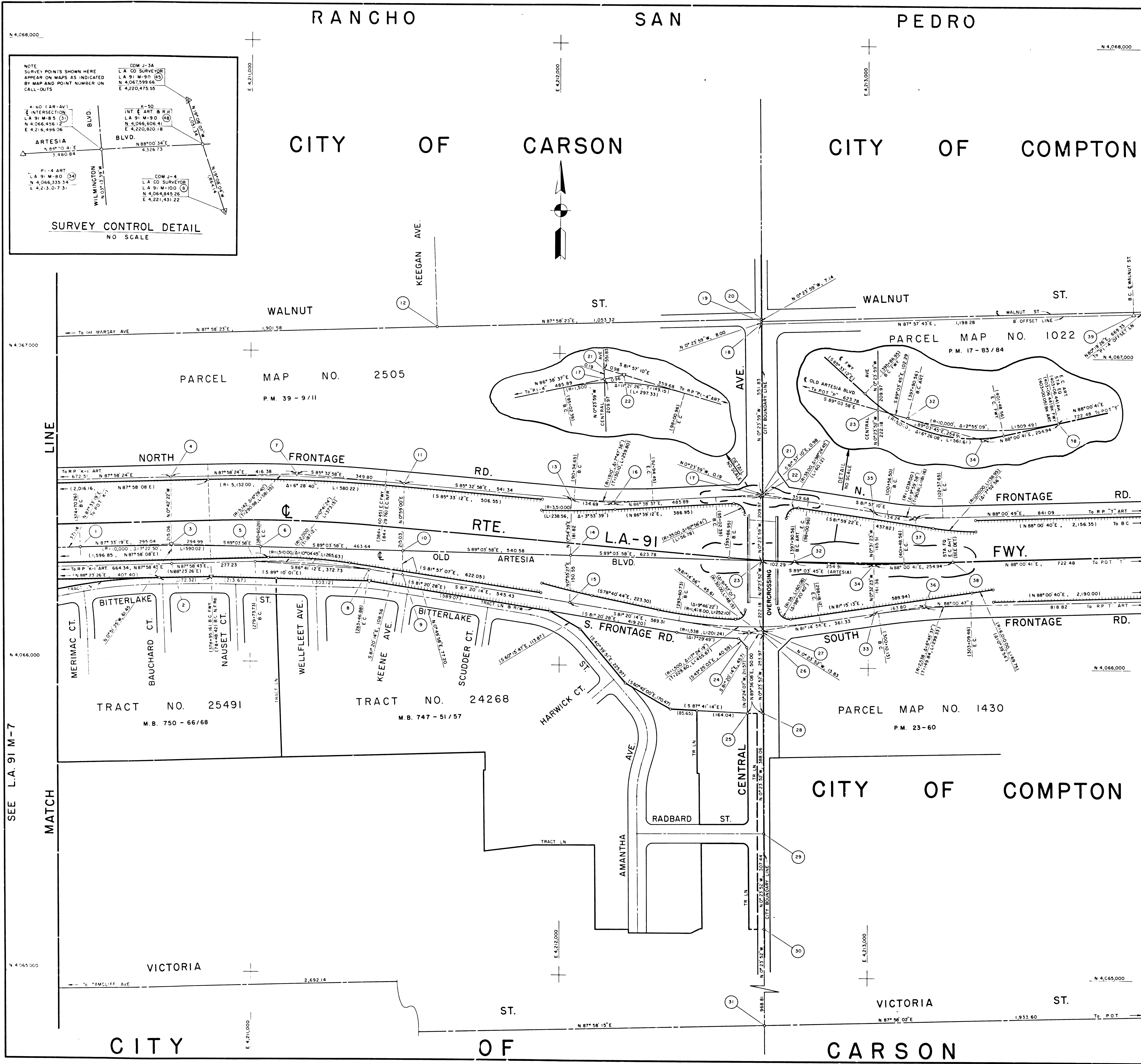
MONUMENTATION MAP

MAP NO. LA 91 M-70

CALIFORNIA COORDINATE SYSTEM - ZONE 7

Drawn By	Checked By	Project Engineer	Drawn By
Date			

F.M. 21655-2



NO	NAME	DESCRIPTION	REFERENCE	REMARKS
1	RT. 1	FD 1/2 B.T.	SR75-189-33	
2	SFR. RP	SET CALTRANS TAG	SR75-189-33	
3	PI-3 ART	FD SPK B.W	SR75-189-33	
4	NFR. RP	SET C-NL	SR75-189-33	
5	BC-SFR	SET CALTRANS DISC	SR75-189-9	
6	PI-3 ART	FD 1-2 B.T	SR75-189-33	
7	PI-3 NFR	SET BT SPK B.W	SR75-189-17	
8	EC-SFR	SET CALTRANS DISC	SR75-189-10	
9	SFR. RP	SET CALTRANS DISC AT E.P	SR75-189-10,34	
10	POT. 2 ART	SET 1/2 B.T	SR75-189-10,34	
11	NFR. RP	SET C-NL	SR75-189-17,34	
12	WA-KE	FD BT SPK T&W RCE 8332	SR73-003-40	
13	NFR. RP	SET C-NL AT E.P	SR75-189-17,35	
14	POT. 2 ART	FD NL IN MED	SR75-189-10,35	
15	SFR. RP	SET CALTRANS DISC	SR75-189-10,35	
16	PI-4 NFR	SET SPK B.W IN AC SHLDR	SR75-189-18	
17	ST-CE	SET BT SPK B.W	SR75-189-18,37	
18	WA-CE8	SET SW ON E CENTRAL	SR73-003-41,42	
19	WA-CE1	FD SPK	SR73-003-41,42	
20	WA-CE2	FD PK NL	SR73-003-41,42	
21	ST PROD	SET C-NL	SR75-189-18,37	
22	PI-5 NFR	SET BT SPK B.W	SR75-189-18,37	
23	AR-CE	FD MON IN WELL	SR73-003-26,41	
24	PI-5 SFR	SET BT SPK B.W	SR75-189-11	
25	TR. COR	FD 2 1/2 P. DN 2'	SR73-003-14	
26	ST PROD	SET C-NL	SR75-189-11	
27	POT. 2 ART	SET BT SPK B.W	SR75-189-11	
28	POT. C-2	DESTROYED	SR73-003-14	
29	RA-CE	FD SPK	SR73-003-14	
30	POT. C-1	FD ST&W RCE 9783	SR73-003-14	
31	VI-CE	FD 1/2 P. B CO RD DEPT TAG	SR73-003-14	
32	BC-4 ART	FD C.D.H. MON	SR73-003-27	
33	SFR. RP	SET BT SPK B.W	SR75-189-12,38	
34	PI-4 ART	FD SPK B.W	SR73-003-27	
35	NFR. RP	SET BT SPK B.W	SR75-189-18,38	
36	PI-6 SFR	SET BT SPK B.W	SR75-189-12	
37	PI-6 NFR	SET BT SPK B.W	SR75-189-18	
38	EC-4 ART	FD C.D.H. MON	SR73-003-27	
39	WA-PI-3	SET S&W	SR73-003-42	

TO OBTAIN GROUND LEVEL DISTANCES MULTIPLY GRID DISTANCES SHOWN BY 1.00000180
GRID WAS ESTABLISHED FROM THE LOS ANGELES COUNTY SURVEY CONTROL STATIONS.
COM J-3-A N 4,067,599.66 E 4,220,475.55
1942 1965
COM J-4 N 4,068,845.26 E 4,221,431.22
1942 1965

LEGEND
— SURVEY CONTROL POINTS
O POINTS OF SURVEY
△ ANGLE POINTS
◇ SECTION CORNERS, RANCHO CORNERS
— RECORDED VALUE AS ESTABLISHED PREVIOUSLY
() VALUE ESTABLISHED BY DISTRICT 7 RIGHT OF WAY BRANCH

NOTE
1. BEARINGS ARE BASED ON THE CALIFORNIA COORDINATE SYSTEM, DIVISION 8, SECTION 8B09 OF THE 1933 PUBLIC RESOURCES CODE.
2. DEPARTMENT OF TRANSPORTATION SURVEY INFORMATION IS AVAILABLE FROM THE SURVEY SECTION OF THE ENGINEERING SERVICES BRANCH, LOS ANGELES, CALIFORNIA.
3. DEPARTMENT OF TRANSPORTATION RIGHT OF WAY INFORMATION IS AVAILABLE FROM THE RIGHT OF WAY BRANCH, LOS ANGELES, CALIFORNIA.
4. STATIONING SHOWN ON THIS MAP IS FOR REFERENCE ONLY.

IN LOS ANGELES COUNTY
BLK. 0621 MOD. 62

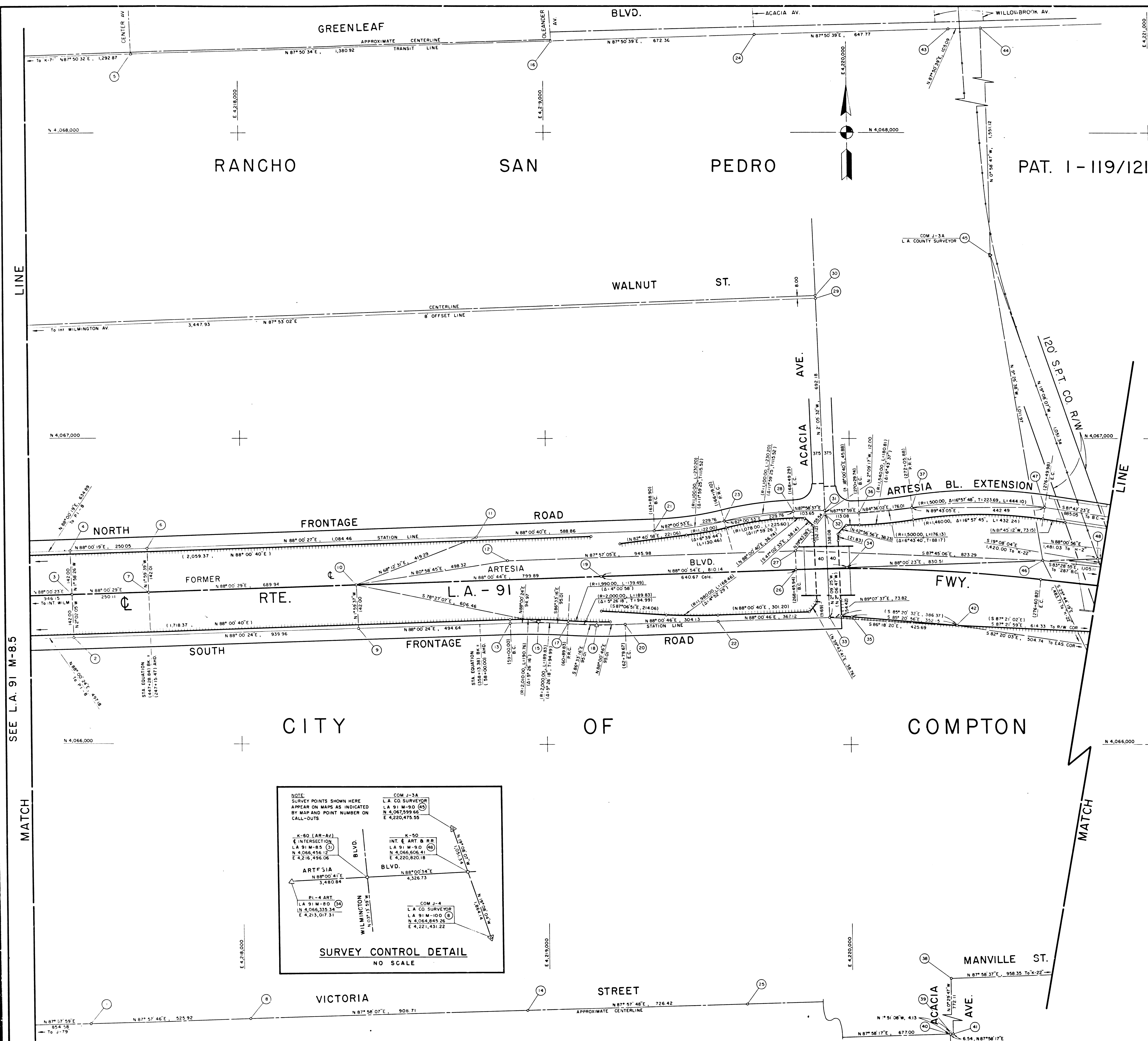
IN THE CITIES OF CARSON AND COMPTON
ALONG FORMER ARTESIA BLVD
FROM MAIN ST. TO ACACIA ST.

CONSTRUCTION CONTRACT NO. 07-040944 COMPLETION DATE JAN 1976
ORIGINAL SCALE: 1"=100'
100 200 300 400 500 FEET

LOS ANGELES COUNTY FILE NO.
STATE OF CALIFORNIA DEPARTMENT OF TRANSPORTATION - SURVEYS
DISTRICT COUNTY ROUTE POST MILES - TOTAL PROJECT SHEET NO. SHEETS
07 LA 91 69-96 3 5
Chief of Party B SPINDLER
Checked by J THOMAS
Project Engineer J THOMAS
Drawn by J THOMAS
California Coordinate System - Zone 7
Scale 1"=100'
Date 9-2-1976

MONUMENTATION MAP
MAP NO. LA 91 M-80

CALIFORNIA COORDINATE SYSTEM - ZONE 7
Scale 1"=100'
Date 9-2-1976



NO	NAME	DESCRIPTION	REFERENCE	REMARKS
1	J -80	FD BT SPK B W	ALA 047 C - 240	
2	SFR-RRP K-58	SET CALTRANS TAG AT E P	SR75-189-44	
3	K-58	FD C.D.H MON	SR75-189-20,21,44 S 47-007-3,8 ALA 047 C-118	
4	NFR-RRP K-58	SET BT SPK B W AT E P	SR75-189-20,44	
5	K-74	SET SPK B W	ALA 047 C -181	
6	NFR-RRP STA 50	SET BT SPK B W AT E P	SR75-189-20,21,45	
7	STA 60	SET NAIL	SR75-189-20,45	
8	J-70	FD BT SPK B W	ALA 047 C -163	
9	SFR-RRP K-58	SET CALTRANS DISC AT E P	SR75-189-14 46	
10	K-55	FD C.D.H MON	SR75-189-14,20,21 46,65 SR74-007-3,8	
11	NFR-RRP 108-00	FD C-NL	SR74-189-21 SR74-007-8	
12	299-46/LT	SET LBT X 6 / LEFT	SR74-007-3	
13	8C-9 SFR	SET SQ SPK & BATHEY CAP	SR74-007-20	
14	J -60	FD BT SPK T B W	ALA 047 C -162	
15	PI-9 SFR	SET CHIS "X" ON T.C.	SR74-007-4,20	
16	K-76	SET SPK B W	ALA 047 C -182	
17	PRC-SFR	SET SQ SPK & BATHEY CAP	SR74-007-20	
18	PI-10 SFR	SET SQ SPK & BATHEY CAP	SR74-007-20	
19	K-54	FD MON IN WELL	ALA 047 C -172 SR74-007-6	
20	EC-10SFR	SET SQ SPK & BATHEY CAP	SR74-007-20	
21	63- 8 C-NFR	SET SPK & BATHEY CAP	SR74-007-8,9	
22	55- NOT-SFR	SET SQ SPK & BATHEY CAP	SR74-007-20	
23	PRC-NFR	SET SPK & BATHEY CAP	SR74-007-9	
24	K-78	SET S B W	ALA 047 C -183	
25	J -40	FD BT SPK B W	ALA 047 C -159	
26	268+ 8 C-FWY	SET L B T TIES ONLY	SR74-007-5 SR75-189-67	
27	268+ X62 LT	SET L B T X62 LEFT	SR74-007-5 SR75-189-67	
28	168+ 8 C-NFR	SET SPK & BATHEY CAP	SR74-007-9,10	
29	AC-WA-8	SET PK NL & BATHEY GP W/WASH	SR74-007-10	
30	AC-WA-8	FD RD HD SPK	SR74-007-10	
31	AC-N-FR	SET SQ SPK & BATHEY CAP	SR74-007-9,10	
32	AR-EXT-AC	SET SQ SPK & BATHEY CAP	SR74-007-4,5,10	
33	AC-5 SFR	SET SQ SPK & BATHEY CAP	SR74-007-4,13,20	
34	K-52	FD MON. IN WELL	ALA 047 C -170,171	
35	POT. R/W	SET 2" P. B BR. CAP	SR74-007-13	
36	270+ 8C-AR-EXT	SET SPK & BATHEY CAP	SR74-007-10,11	
37	272+ PRC-AR-EX	SET SPK & BATHEY CAP	SR74-007-11	
38	K-20	FD C-NL AT INT	ALA 047 C -165	
39	LA047-J-4A	SURVEY CONTROL PT. FD BRASS CAP IN WELL	ALA 047 C -164	
40	K-17	FD SPK B C.H.C WASHER	ALA 047 C -164	
41	K-18	FD SPK B W	ALA 047 C -164	
42	R/W COR 273	SET 2" P. B BR. CAP	SR74-007-13,14	
43	K-84	SET SPK B W	ALA 047 C -184	
44	K-85	SET SPK & C.H.C. WASHER	ALA 047 C -185	
45	COM J-3A	SURVEY CONTROL PT. FD L A CO BR CAP MON ON S'	N 4,067,599.66 E 4,220,475.55 ALA 047 C -193,195 ALA 091 C -122	
46	276+ +62/LT	SET L B T +62 LT STA 276+62	SR74-007-7	
47	276+ +E.C-AR-EX	SET SQ SPK & DOW WASHER	SR74-007-11	
48	K-50	FD L B T	ALA 091 C -122 ALA 047 C -170	N 4,066,606.41 E 4,220,820.18

TO OBTAIN GROUND LEVEL DISTANCES MULTIPLY GRID DISTANCES SHOWN BY 1.00000180
GRID WAS ESTABLISHED FROM THE LOS ANGELES COUNTY SURVEY CONTROL STATIONS:

"COM J-3A"	N 4,067,599.66	"COM J-4"	N 4,064,845.26
1942	E 4,220,475.55	1965	E 4,221,431.22

LEGEND

△ ——— SURVEY CONTROL POINTS
O ——— POINTS OF SURVEY
△ ——— ANGLE POINTS
◇ ——— SECTION CORNERS, RANCHO CORNERS
R ——— RECORDED VALUE AS ESTABLISHED PREVIOUSLY
() ——— VALUE ESTABLISHED BY DISTRICT 7 RIGHT OF WAY BRANCH

NOTE

1. BEARINGS ARE BASED ON THE CALIFORNIA COORDINATE SYSTEM, DIVISION 8, SECTION 8809
2. THE 1953 PUBLIC RESOURCES CODE
3. DEPARTMENT OF TRANSPORTATION SURVEY INFORMATION IS AVAILABLE FROM THE SURVEY SECTION OF THE ENGINEERING SERVICES BRANCH, LOS ANGELES, CALIFORNIA
4. DEPARTMENT OF TRANSPORTATION RIGHT OF WAY INFORMATION IS AVAILABLE FROM THE RIGHT OF WAY BRANCH, LOS ANGELES, CALIFORNIA
5. STATIONING SHOWN ON THIS MAP IS FOR REFERENCE ONLY

IN LOS ANGELES COUNTY

BLK. 0622 MOD. 70

IN THE CITIES OF CARSON AND COMPTON
ALONG FORMER ARTESIA BLVD.
FROM MAIN ST. TO ACAÇIA ST.

CONSTRUCTION CONTRACT NO. 07-040944 COMPLETION DATE: JAN. 1976

ORIGINAL SCALE: 1" = 100'

LOS ANGELES COUNTY FILE NO.

STATE OF CALIFORNIA - DEPARTMENT OF TRANSPORTATION - SURVEYS

DISTRICT	COUNTY	ROUTE	POST MILES - TOTAL PROJECT	SHEET NO	TOTAL SHEETS	Chief of Party	Office Supervisor
07	LA	91	6.9 - 9.6	5	5	B SPINDLER	DOO EBERLY

MONUMENTATION MAP		Calc & Compiled by	Checked by
		W. H. HARRIS	W. H. HARRIS

Project Engineer	Designated By
------------------	---------------

MAP NO. <u>L.A. 91 M-9.0</u>	J. KASZEMSKI	K. STROPUS
	Police Service Engineer	

16906

CALIFORNIA COORDINATE SYSTEM - ZONE <u>7</u>					Date <u>9-2-1976</u>
Survey Area					

[illegible]

FBI 21655-5