

OF RANCHO SOLDIERS HOME, (VILLA FARMS) M.R. 70 - 54 et seq.

300 ACRES

COTNER AVE.

PONTIUS AVE.

CITY OF LOS ANGELES

SEPULVEDA BLVD.

BLVD.

POR.								
TRACT NO. 7514								
M.B. 80-81/82								
BLK. 7								

CITY OF LOS ANGELES COUNTY OF LOS ANGELES COUNTY SUBDIVISION

M. R. 26 - 19 / 25

M. R. 52 - 9 et seq.

BLOCK 13

LOT 2

RANCHO

State to County of Los Angeles  
 Title - S. 1/4  
 State to City of Los Angeles  
 Title - S. 1/4  
 Continuation on P-1931 & P-1930

EA 21682  
 A1 OF A4

FOR CONTINUATION SEE MAP NO. F-1931



MONICA

300 ACRES

POR. BLK. 230

PEPPER AVE. (Private Road)

(CONSTITUTION AVE.)

CITY OF LOS ANGELES

CITY OF LOS ANGELES

E

BUENOS

M. R. 26 - 19 / 25

BLOCK 22

LOT 5

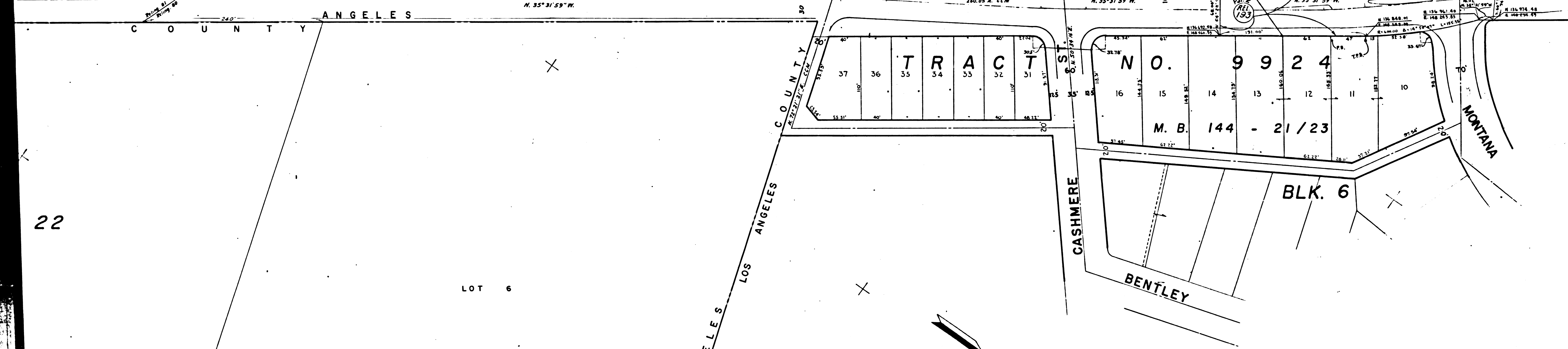
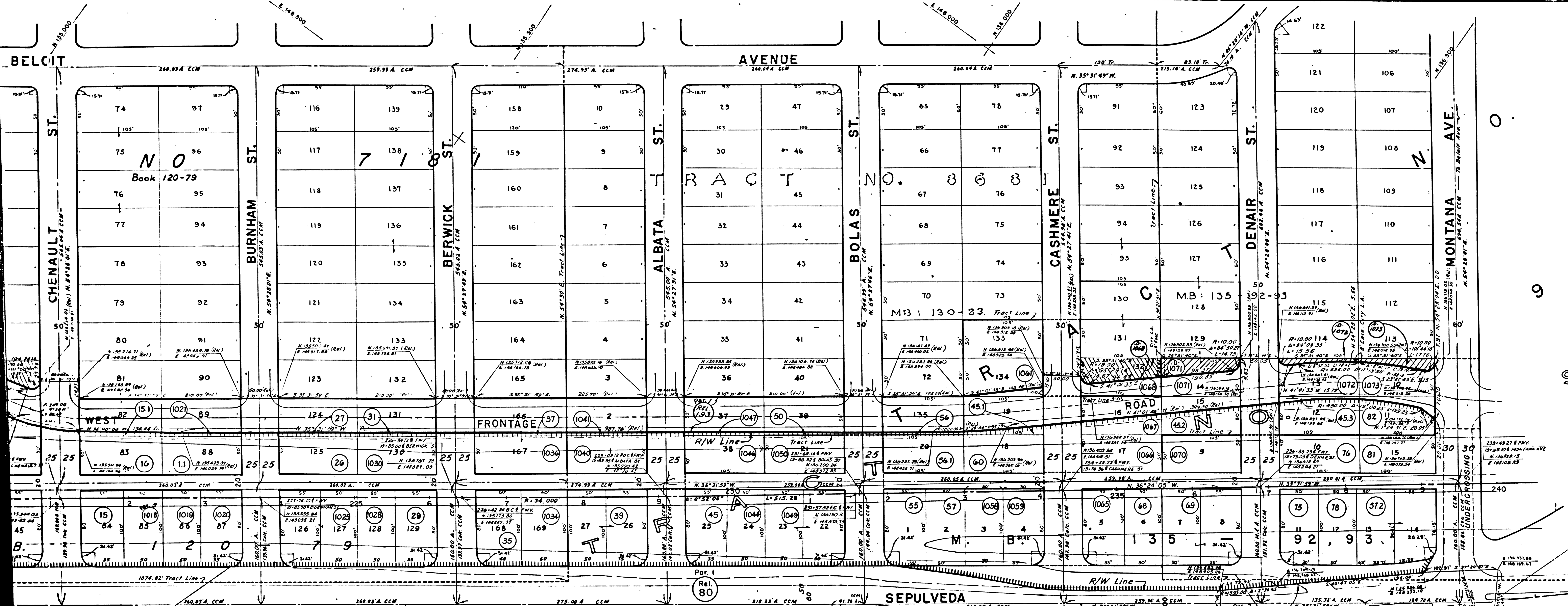
AYRES

LOT 6

CITY OF LOS ANGELES

- 1 - Albert A. White, et al
- 2 - Ernest A. Dellinger
- 3 - Walter T. Fisher, et al
- 4 - Albert Chiles
- 5 - Mrs. Teta, et al
- 6 - Mrs. B. Bell, et al
- 7 - Dorothy K. Adams
- 8 - Eleanor B. Clark, et al
- 9 - James A. Proctor, et al
- 10 - William A. White, et al
- 11 - Frances Olive Anderson, et al
- 12 - William A. White, et al
- 13 - James A. Proctor, et al
- 14 - William A. White, et al
- 15 - William A. White, et al
- 16 - George D. Day, et al
- 17 - Raymond J. Jennings, et al
- 18 - Frances Olive Anderson, et al
- 19 - Betty Murray
- 20 - Frances Olive Anderson, et al
- 21 - Frances Olive Anderson, et al
- 22 - Frances Olive Anderson, et al
- 23 - Frances Olive Anderson, et al
- 24 - Frances Olive Anderson, et al
- 25 - Frances Olive Anderson, et al
- 26 - Billie Caspary, Ord. of W.
- 27 - Peter A. Conroy, et al
- 28 - Harold A. Smith, et al
- 29 - James M. White, Ord. of W.
- 30 - John R. Pennington
- 31 - John R. Pennington
- 32 - John R. Pennington
- 33 - John R. Pennington
- 34 - John R. Pennington
- 35 - William A. Johnson, et al
- 36 - John Pennington
- 37 - John Pennington
- 38 - John Pennington
- 39 - John Pennington
- 40 - John Pennington
- 41 - John Pennington
- 42 - John Pennington
- 43 - John Pennington
- 44 - John Pennington
- 45 - John Pennington
- 46 - John Pennington
- 47 - John Pennington
- 48 - John Pennington
- 49 - John Pennington
- 50 - John Pennington

F.M. 21682  
A3 OF A4



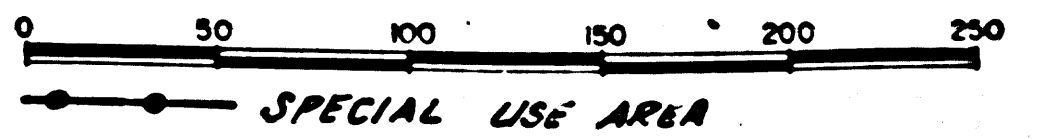
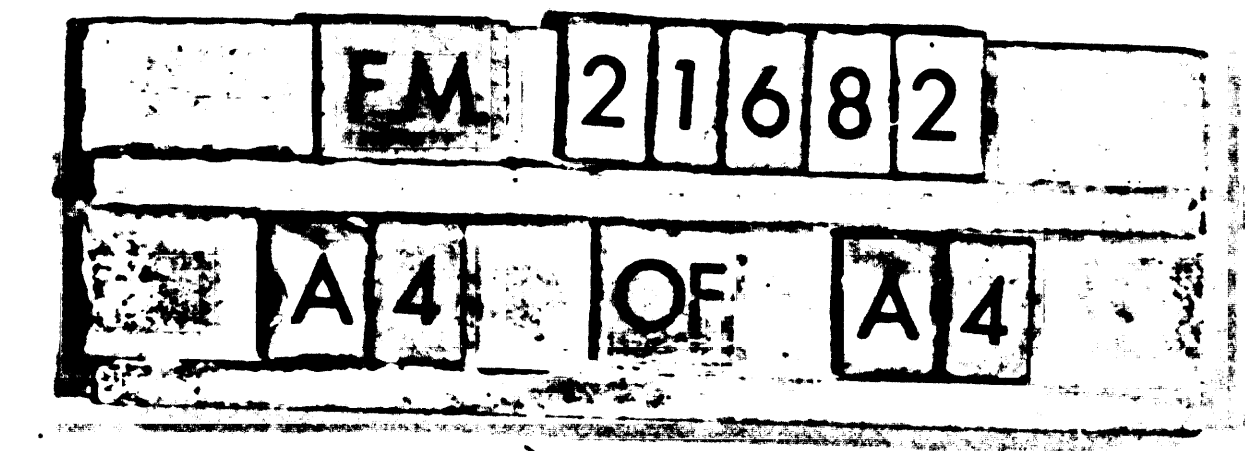
10	George D. Ray, et al.	26	Billie Cecender Ord, et al.	42	John Stamboli, et al.
11	Raymond J. University, et al.	27	Peter A. Conroy, et al.	43	John Stamboli, et al.
12	George D. Ray, et al.	28	John Stamboli, et al.	44	John Stamboli, et al.
13	George D. Ray, et al.	29	John Stamboli, et al.	45	John Stamboli, et al.
14	George D. Ray, et al.	30	John Stamboli, et al.	46	John Stamboli, et al.
15	George D. Ray, et al.	31	John Stamboli, et al.	47	John Stamboli, et al.
16	George D. Ray, et al.	32	John Stamboli, et al.	48	John Stamboli, et al.
17	George D. Ray, et al.	33	John Stamboli, et al.	49	John Stamboli, et al.
18	George D. Ray, et al.	34	John Stamboli, et al.	50	John Stamboli, et al.
19	George D. Ray, et al.	35	John Stamboli, et al.	51	John Stamboli, et al.
20	George D. Ray, et al.	36	John Stamboli, et al.	52	John Stamboli, et al.
21	George D. Ray, et al.	37	John Stamboli, et al.	53	John Stamboli, et al.
22	George D. Ray, et al.	38	John Stamboli, et al.	54	John Stamboli, et al.
23	George D. Ray, et al.	39	John Stamboli, et al.	55	John Stamboli, et al.
24	George D. Ray, et al.	40	John Stamboli, et al.	56	John Stamboli, et al.
25	George D. Ray, et al.	41	John Stamboli, et al.	57	John Stamboli, et al.
26	George D. Ray, et al.	42	John Stamboli, et al.	58	John Stamboli, et al.
27	George D. Ray, et al.	43	John Stamboli, et al.	59	John Stamboli, et al.
28	George D. Ray, et al.	44	John Stamboli, et al.	60	John Stamboli, et al.
29	George D. Ray, et al.	45	John Stamboli, et al.	61	John Stamboli, et al.
30	George D. Ray, et al.	46	John Stamboli, et al.	62	John Stamboli, et al.
31	George D. Ray, et al.	47	John Stamboli, et al.	63	John Stamboli, et al.
32	George D. Ray, et al.	48	John Stamboli, et al.	64	John Stamboli, et al.
33	George D. Ray, et al.	49	John Stamboli, et al.	65	John Stamboli, et al.
34	George D. Ray, et al.	50	John Stamboli, et al.	66	John Stamboli, et al.
35	George D. Ray, et al.	51	John Stamboli, et al.	67	John Stamboli, et al.
36	George D. Ray, et al.	52	John Stamboli, et al.	68	John Stamboli, et al.
37	George D. Ray, et al.	53	John Stamboli, et al.	69	John Stamboli, et al.
38	George D. Ray, et al.	54	John Stamboli, et al.	70	John Stamboli, et al.
39	George D. Ray, et al.	55	John Stamboli, et al.	71	John Stamboli, et al.
40	George D. Ray, et al.	56	John Stamboli, et al.	72	John Stamboli, et al.
41	George D. Ray, et al.	57	John Stamboli, et al.	73	John Stamboli, et al.
42	George D. Ray, et al.	58	John Stamboli, et al.	74	John Stamboli, et al.
43	George D. Ray, et al.	59	John Stamboli, et al.	75	John Stamboli, et al.
44	George D. Ray, et al.	60	John Stamboli, et al.	76	John Stamboli, et al.
45	George D. Ray, et al.	61	John Stamboli, et al.	77	John Stamboli, et al.
46	George D. Ray, et al.	62	John Stamboli, et al.	78	John Stamboli, et al.
47	George D. Ray, et al.	63	John Stamboli, et al.	79	John Stamboli, et al.
48	George D. Ray, et al.	64	John Stamboli, et al.	80	John Stamboli, et al.
49	George D. Ray, et al.	65	John Stamboli, et al.	81	John Stamboli, et al.
50	George D. Ray, et al.	66	John Stamboli, et al.	82	John Stamboli, et al.
51	George D. Ray, et al.	67	John Stamboli, et al.	83	John Stamboli, et al.
52	George D. Ray, et al.	68	John Stamboli, et al.	84	John Stamboli, et al.
53	George D. Ray, et al.	69	John Stamboli, et al.	85	John Stamboli, et al.
54	George D. Ray, et al.	70	John Stamboli, et al.	86	John Stamboli, et al.
55	George D. Ray, et al.	71	John Stamboli, et al.	87	John Stamboli, et al.
56	George D. Ray, et al.	72	John Stamboli, et al.	88	John Stamboli, et al.
57	George D. Ray, et al.	73	John Stamboli, et al.	89	John Stamboli, et al.
58	George D. Ray, et al.	74	John Stamboli, et al.	90	John Stamboli, et al.
59	George D. Ray, et al.	75	John Stamboli, et al.	91	John Stamboli, et al.
60	George D. Ray, et al.	76	John Stamboli, et al.	92	John Stamboli, et al.
61	George D. Ray, et al.	77	John Stamboli, et al.	93	John Stamboli, et al.
62	George D. Ray, et al.	78	John Stamboli, et al.	94	John Stamboli, et al.
63	George D. Ray, et al.	79	John Stamboli, et al.	95	John Stamboli, et al.
64	George D. Ray, et al.	80	John Stamboli, et al.	96	John Stamboli, et al.
65	George D. Ray, et al.	81	John Stamboli, et al.	97	John Stamboli, et al.
66	George D. Ray, et al.	82	John Stamboli, et al.	98	John Stamboli, et al.
67	George D. Ray, et al.	83	John Stamboli, et al.	99	John Stamboli, et al.
68	George D. Ray, et al.	84	John Stamboli, et al.	100	John Stamboli, et al.
69	George D. Ray, et al.	85	John Stamboli, et al.	101	John Stamboli, et al.
70	George D. Ray, et al.	86	John Stamboli, et al.	102	John Stamboli, et al.
71	George D. Ray, et al.	87	John Stamboli, et al.	103	John Stamboli, et al.
72	George D. Ray, et al.	88	John Stamboli, et al.	104	John Stamboli, et al.
73	George D. Ray, et al.	89	John Stamboli, et al.	105	John Stamboli, et al.
74	George D. Ray, et al.	90	John Stamboli, et al.	106	John Stamboli, et al.
75	George D. Ray, et al.	91	John Stamboli, et al.	107	John Stamboli, et al.
76	George D. Ray, et al.	92	John Stamboli, et al.	108	John Stamboli, et al.
77	George D. Ray, et al.	93	John Stamboli, et al.	109	John Stamboli, et al.
78	George D. Ray, et al.	94	John Stamboli, et al.	110	John Stamboli, et al.
79	George D. Ray, et al.	95	John Stamboli, et al.	111	John Stamboli, et al.
80	George D. Ray, et al.	96	John Stamboli, et al.	112	John Stamboli, et al.
81	George D. Ray, et al.	97	John Stamboli, et al.	113	John Stamboli, et al.
82	George D. Ray, et al.	98	John Stamboli, et al.	114	John Stamboli, et al.
83	George D. Ray, et al.	99	John Stamboli, et al.	115	John Stamboli, et al.
84	George D. Ray, et al.	100	John Stamboli, et al.	116	John Stamboli, et al.
85	George D. Ray, et al.	101	John Stamboli, et al.	117	John Stamboli, et al.
86	George D. Ray, et al.	102	John Stamboli, et al.	118	John Stamboli, et al.
87	George D. Ray, et al.	103	John Stamboli, et al.	119	John Stamboli, et al.
88	George D. Ray, et al.	104	John Stamboli, et al.	120	John Stamboli, et al.
89	George D. Ray, et al.	105	John Stamboli, et al.	121	John Stamboli, et al.
90	George D. Ray, et al.	106	John Stamboli, et al.	122	John Stamboli, et al.

**INTERSTATE**  
**NOT TO BE TAKEN**  
**FROM DISTRICT OFFICE**  
 COORDINATES SHOWN ARE FOR INTERNAL  
 USE OF THE DIVISION OF HIGHWAYS AND  
 ARE TO BE USED FOR REFERENCE ONLY

STATE OF CALIFORNIA  
 TRANSPORTATION AGENCY  
 DEPARTMENT OF PUBLIC WORKS  
 DIVISION OF HIGHWAYS  
 ROAD: 7-LA-405  
 (Old 7-LA-158-LA)

**RIGHT OF WAY RECORD MAP**

OHIO AVE. (PM 31.05)  
 TO MONTANA AVE. (PM 32.50)



FOR CONTINUATION SEE MAP NO. F-1933-1