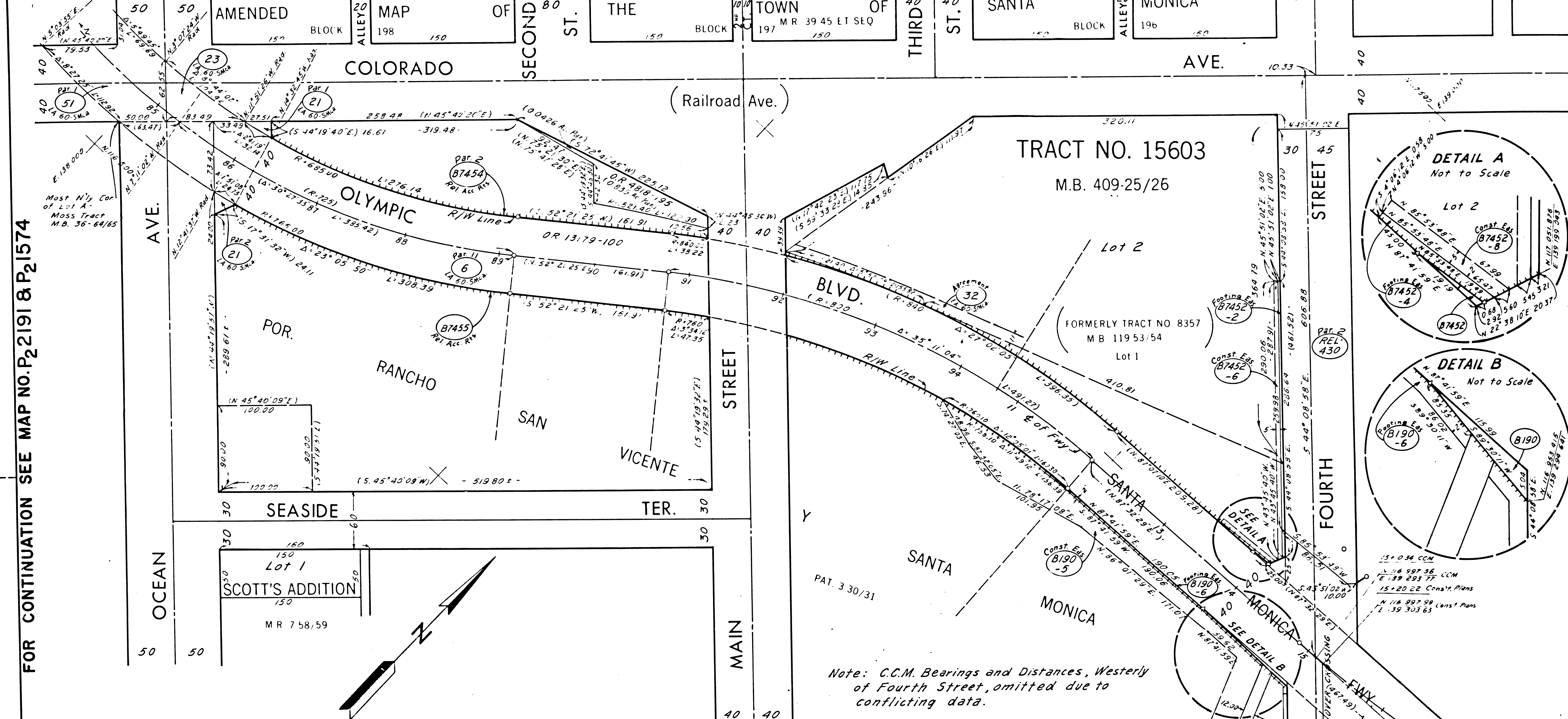


FOR CONTINUATION SEE P₂733 AMENDED MAP OF THE TOWN OF SANTA MONICA



FOR CONTINUATION SEE MAP NO. P₂2191 & P₂1574

FOR CONTINUATION SEE MAP NO. F 2061-3

FOR CONTINUATION SEE MAP NO. F 2061-2 INTERSTATE

PARCEL NO.	GRANTOR OR GRANTEE	INST.	RECORDING DATE	OR
6 Par 11	Title Guaranty and Trust Co. et al	Fee/Ord	12-14-34	13179-100
21 Par 1 & 2	So Pac. RR Co. et al	Q.C.	4-30-35	13410-143
23	R A Huber	Q.C.	10-24-34	12892-309
32	Patten-Blinn Lumber Co	Agree		
Rel 430	for 2 State to City of Santa Monica	Rel	12-22-66	R2676-439
For par 3 thru 9 see map F-2062				
For par 12 thru 15 and 17 thru 19 see map F-2363				
For par 20 thru 24 see map F-2364. For par 25 thru 33 & 51 see map F-2065				

PARCEL NO.	GRANTOR OR GRANTEE	INST.	RECORDING DATE	OR
51 Par 1	G.S. Jones, et al	Fee/Ord	11-1-38	16197-74
35	R.L. Poindexter, et al	Q.C.	6-27-35	13440-341
39	A.M. Free, et ux	Q.C.	8-2-35	13513-269
40	A.H. Calkins, et al	Q.C.	8-2-35	13557-192
41	J.D. Fredericks, et al	Q.C.	8-9-35	13632-1
42	A. Carrillo	Q.C.	10-1-35	13650-240
43	E. Dowling, et al	Q.C.	4-6-36	14092-48
44	L.G. Coutts	Q.C.	10-15-36	14415-285
45	J.F. Coutts, Jr	Q.C.	10-15-36	14458-189
46	K.B. Carrillo	Q.C.	10-16-36	14501-142
47	G.Q. Peabody	Q.C.	11-24-36	14507-368
48	A. MacMonnies, et al	Q.C.	7-29-37	15084-202
49	R. Hill	Q.C.	3-23-38	15701-71
50	E.J. Carrillo, et al	Q.C.	5-2-38	15689-370
52	J.M. Danziger, et ux	Q.C.	12-1-38	16117-310

PARCEL NO.	GRANTOR OR GRANTEE	INST.	RECORDING DATE	OR
B190	City of Santa Monica	Fee	7-1-65	D2961-503
B190-5	City of Santa Monica	Consent		
B190-6	City of Santa Monica	Fee	7-1-65	D2961-503
B7452	Western Steel and Metals Corp	Fee	5-12-65	D2901-286
B7452-2	Western Steel and Metals Corp	Fee	5-12-65	D2901-286
B7452-4	Western Steel and Metals Corp	Fee	5-12-65	D2901-286
B7452-6	Sears, Roebuck and Co	Consent		
B7452-8	Sears, Roebuck and Co	Consent		
B7454 Par 2	Holiday Inns of Amer, Inc. et al	Rel Acc	12-16-64	D2735-1
B7455	The Rand Corp	Rel Acc	4/2/64	D2441-183

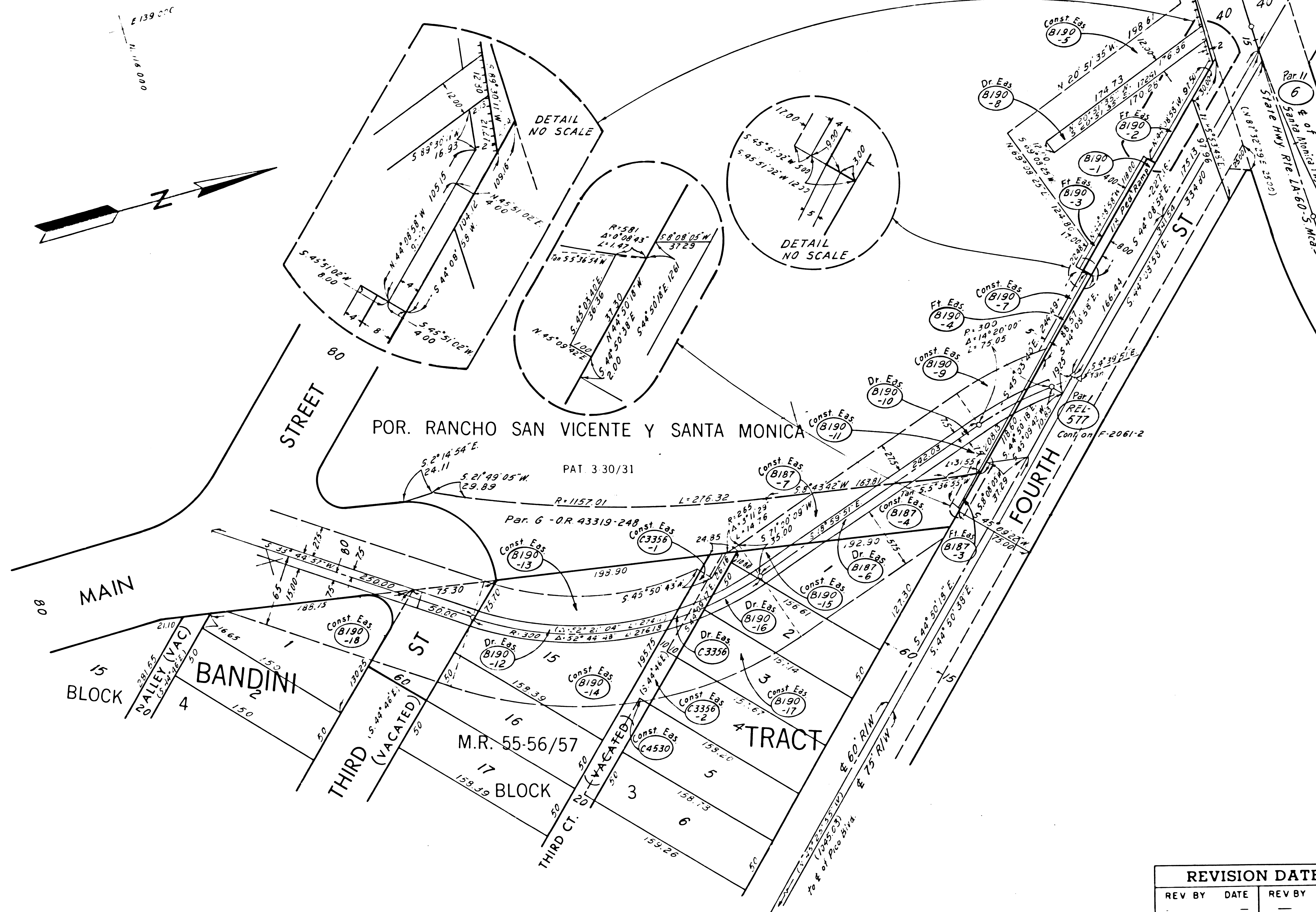
REVISION DATES			
REV BY	DATE	REV BY	DATE

STATE OF CALIFORNIA
TRANSPORTATION AGENCY DEPARTMENT OF PUBLIC WORKS
DIVISION OF HIGHWAYS
7-LA-1(10) PM 35.1
RIGHT OF WAY RECORD MAP
OCEAN AVE. TO FOURTH ST.
SCALE 1"=50'
DRAFT H. Berry

LEGEND: ACCESS DENIAL LINE TOP OF CUT TOE OF FILL
IF MORE THAN ONE BEARING AND DISTANCE IS SHOWN FOR A LINE, THE ONE IN PARENTHESES IS PREVIOUS RECORD. FILE NO. F 2061-1

FM 21686-1

Date:



FOR CONTINUATION SEE MAP NO. F 2061-2

PARCEL NO.	GRANTOR OR GRANTEE	INST.	RECORDING DATA DATE	O.R.
6 Par 11	Title Guarantee & Trust Co. et al	Fee/Con	12-14-34	13179-100
B187-3	City of Santa Monica	Ft Eas		
B187-4	City of Santa Monica	Consent		
B187-6	City of Santa Monica	Dr Eas	3-9-70	D4651-554
B187-7	City of Santa Monica	Consent		
B190-1	City of Santa Monica	Fee	7-1-65	D2961-503
B190-2	City of Santa Monica	Ft Eas	7-1-65	D2961-503
B190-3	City of Santa Monica	Ft Eas	7-1-65	D2961-503
B190-4	City of Santa Monica	Ft Eas	7-1-65	D2961-503
B190-5	City of Santa Monica	Consent		
B190-7	City of Santa Monica	Consent		
B190-8	City of Santa Monica	Dr Eas	7-1-65	D2961-503
B190-9	City of Santa Monica	Consent		
B190-10	City of Santa Monica	Dr Eas	7-1-65	D2961-503
B190-11	City of Santa Monica	Consent		
B190-12	City of Santa Monica	Dr Eas	7-1-65	D2961-503
B190-13	City of Santa Monica	Consent		
B190-14	City of Santa Monica	Consent		
B190-15	City of Santa Monica	Consent		
B190-16	City of Santa Monica	Dr Eas	7-1-65	D2961-503
B190-17	City of Santa Monica	Consent		
B190-18	City of Santa Monica	Consent		
C3356	City of Santa Monica	Dr Eas	7-1-65	D2961-509
C3356-1	City of Santa Monica	Consent		
C3356-2	City of Santa Monica	Consent		
C4530	City of Santa Monica	Consent		
REL-577 Par 1	State to City of Santa Monica	Rel	6-29-67	R2777-823

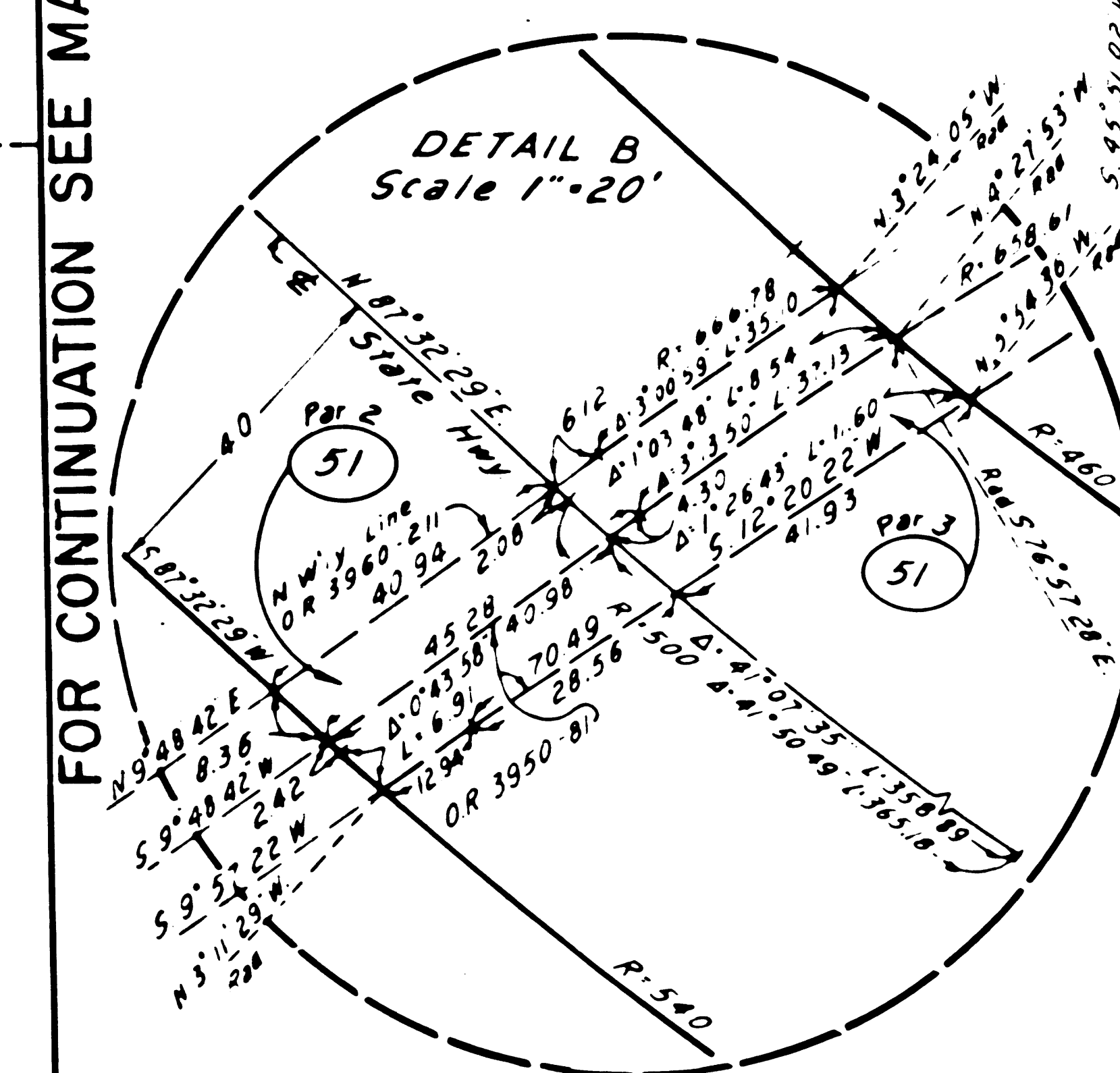
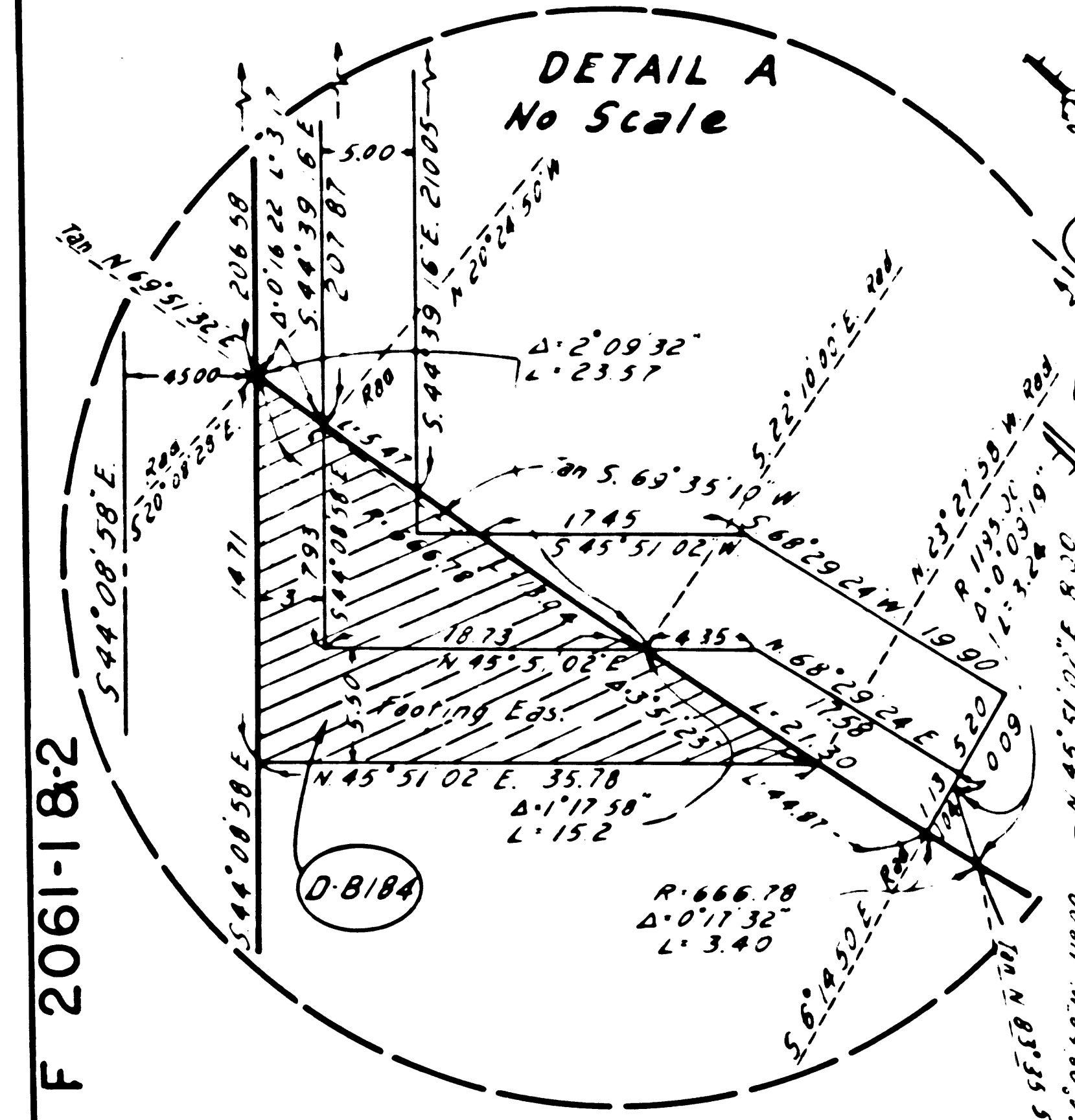
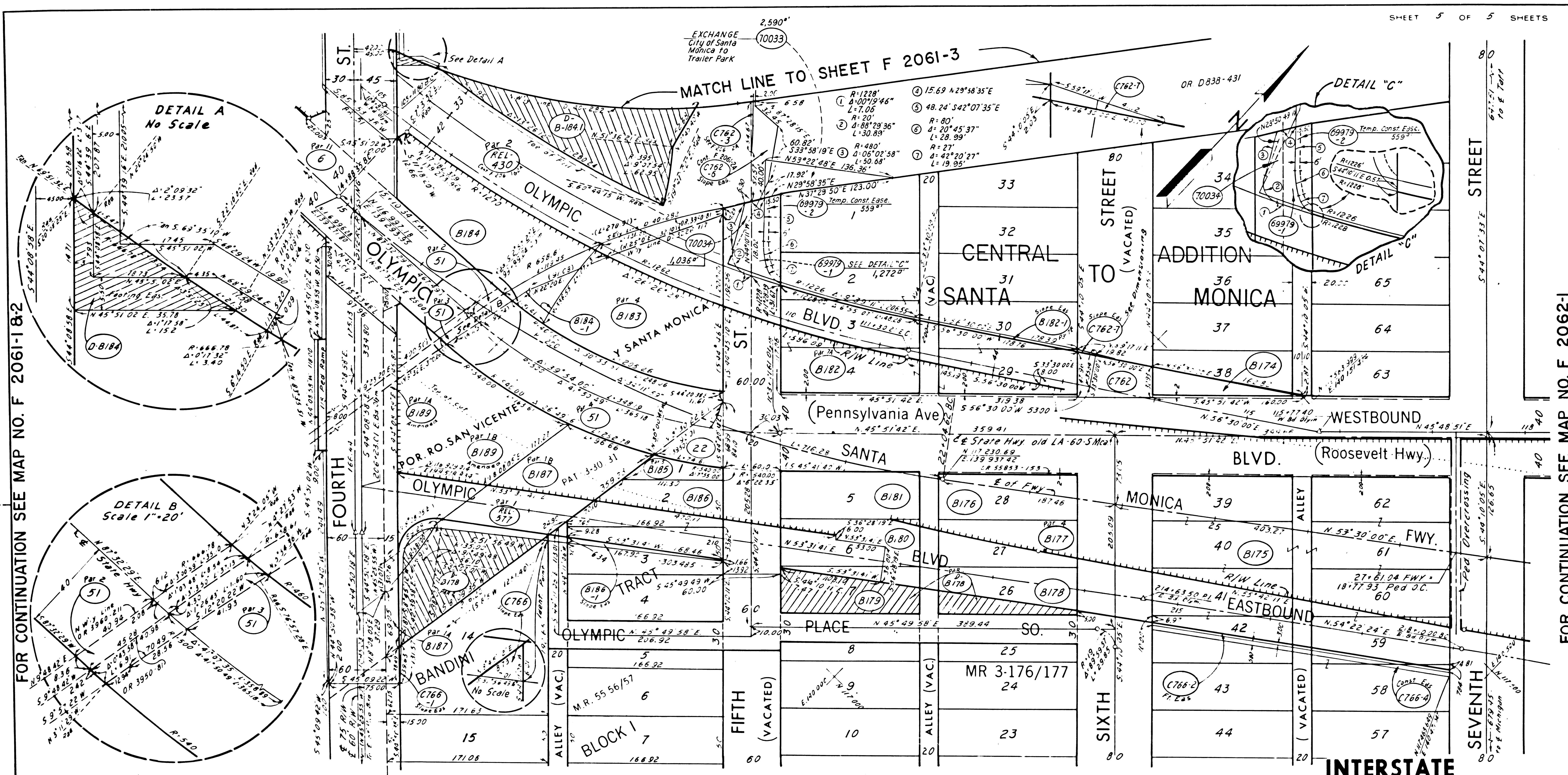
INTERSTATE

REVISION DATES		STATE OF CALIFORNIA	
REV BY	DATE	TRANSPORTATION AGENCY	DEPARTMENT OF PUBLIC WORKS
		DIVISION OF HIGHWAYS	
		07-LA-1(10) PM 35.1	
RIGHT OF WAY RECORD MAP			
MAIN ST. to FOURTH ST.			
SCALE 1" = 50'			
DRAFT HA Berry			

LEGEND: ACCESS DENIAL LINE TOP OF CUT TOE OF FILL
 IF MORE THAN ONE BEARING AND DISTANCE IS SHOWN FOR A LINE, THE ONE IN PARENTHESES IS PREVIOUS RECORD
 FILE NO. E 2061-2

FM 21686-2

Date:



FOR CONTINUATION SEE MAP NO. F 2061-1&2

FOR CONTINUATION SEE MAP NO. F 2062-1

PARCEL NO	GRANTOR OR GRANTEE	INST	RECORDING DATE	OR
6	Par 11 Title Guarantee & Trust Co. et al	Fee/Cond	12-14-34	13179-100
22	P. Becerra, et ux	Fee	9-22-34	12987-207
51	Par 234 G. S. Jones, et al	Fee/Cond	11-1-38	16197-74
B174	R. Pilone	Fee	5-6-63	D2017-341
B175	Santa Monica City School Dist.	Fee	2-17-60	D752-350
B176	F. A. Gandy, et al	Fee	9-20-60	D980-63
B177	Par 4 General Components, et al	Fee/Cond	12-17-63	D2292-578
B178	M. Dupuy	Fee	10-25-62	D1801-685
B179	R. L. Riddle, et ux	Fee	5-29-63	D2046-72
B180	A. E. Maxwell	Fee	10-22-62	D1797-13
B181	E. I. Tabor, et ux	Fee	3-4-63	D1940-84
B182	L. Reynoso, et al	Fee/Cond	6-5-64	D2499-469
B182-1	L. Reynoso, et al	Fee/Cond	6-5-64	D2499-469

PARCEL NO	GRANTOR OR GRANTEE	INST	RECORDING DATE	OR
B183	Par 4 Bandini, Dear, et al	Fee/Cond	8-11-63	D3012-607
B184	Pacific Electric Railway Co.	Fee	8-11-65	T4520-239
B184-1	Pacific Electric Railway Co.	Fee	8-11-65	T4520-239
D-B184	St. to Western Steel & Metals Corp.	DD	1-7-66	D3169-937
D-B184-1	State to B. & L. Herson	DD	6-20-69	D4410-116
B185	L. Reynoso, et al	Fee/Cond	5-1-64	D2457-266
B186	G. L. Shukuroff, et al	Fee	9-6-63	D2173-182
B186-1	G. L. Shukuroff, et al	Fee	9-6-63	D2173-182
B187	Par 118 A. MacMonnies, et al	Fee/Cond	7-20-65	D2983-848
B189	Par 118 City of Santa Monica, et al	Fee/Cond	8-2-65	D2999-841
D-B189	City of Santa Monica	DD	1-30-71	D4952-733
69979-1	Temp. Const. Easement	Fee		
69979-2	"	Fee		
70033	"	Fee		
70034	"	Fee		

PARCEL NO	GRANTOR OR GRANTEE	INST	RECORDING DATE	OR
C762	City of Santa Monica	Fee	5-28-63	D2044-481
C762-6	City of Santa Monica	Fee	5-28-63	D2044-481
C762-7	City of Santa Monica	Fee	5-28-63	D2044-481
C766	Santa Monica Unified Sch. Dist.	Fee	10-8-64	D2656-626
C766-1	Santa Monica Unified Sch. Dist.	Fee	10-8-64	D2656-626
C766-2	Santa Monica Unified Sch. Dist.	Fee	10-8-64	D2656-626
C766-4	Santa Monica Unified Sch. Dist. Temp. Eas.			
Rel 430	Par 2 State to City of Santa Monica	Rel	12-22-66	R2676-439
D-B189	City of Santa Monica	DD		
69979-1	Temp. Const. Easement	Fee		
69979-2	"	Fee		
70033	"	Fee		
70034	"	Fee		

REVISION DATES	
REV BY	DATE
V.J.R.	8-19-75

STATE OF CALIFORNIA
 TRANSPORTATION AGENCY DEPARTMENT OF PUBLIC WORKS
 DIVISION OF HIGHWAYS
 07-LA-1(10) PM 34.8
RIGHT OF WAY RECORD MAP
 FOURTH ST. TO SEVENTH ST.

SCALE 1"=50'
 DRAFT H. Berry

LEGEND: ACCESS DENIAL LINE TOP OF CUT ----- TOE OF FILL
 IF MORE THAN ONE BEARING AND DISTANCE IS SHOWN FOR A LINE, THE ONE IN PARENTHESES IS PREVIOUS RECORD.

FILE NO. F 2061-4

Date: _____

FM 21686-4