

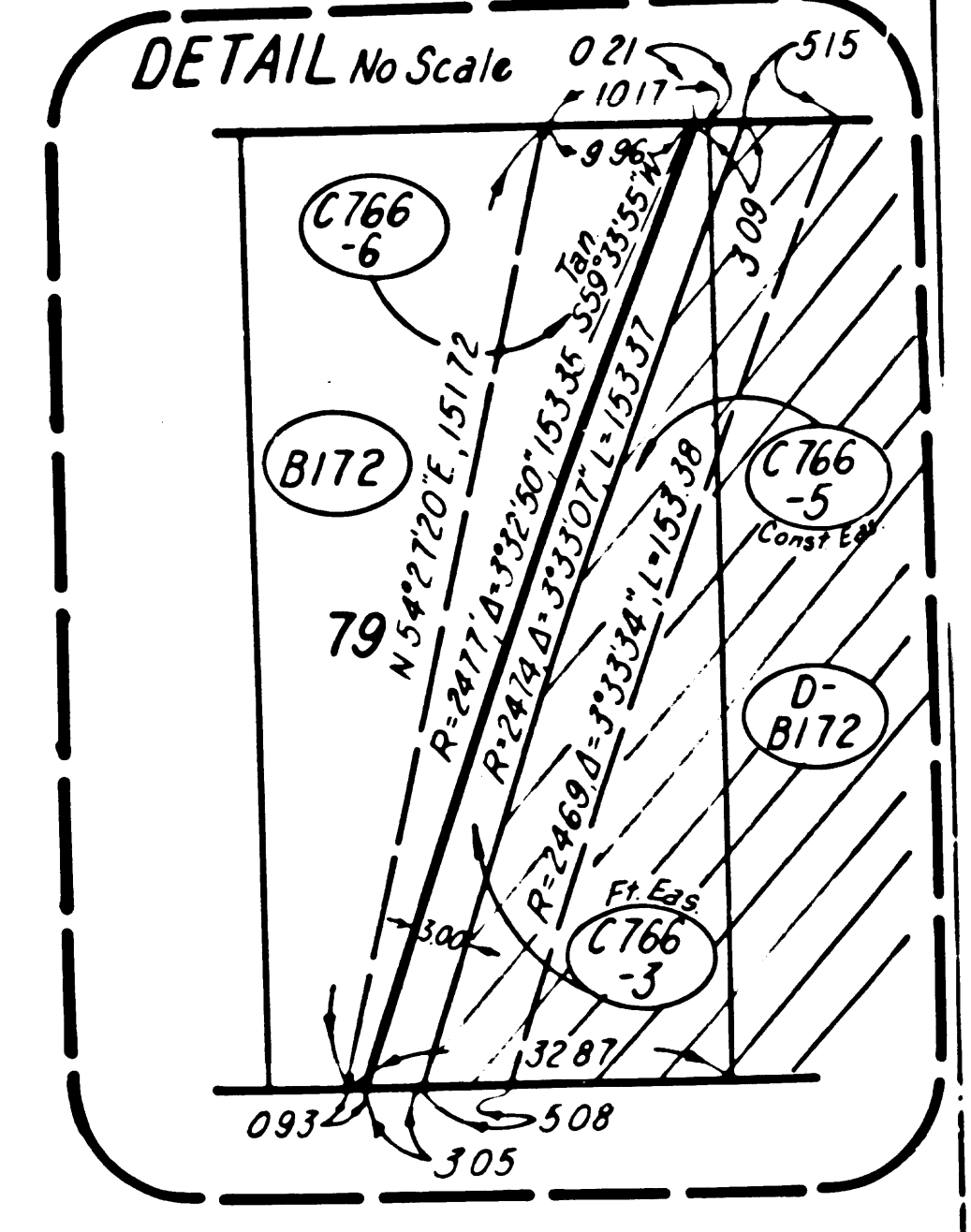
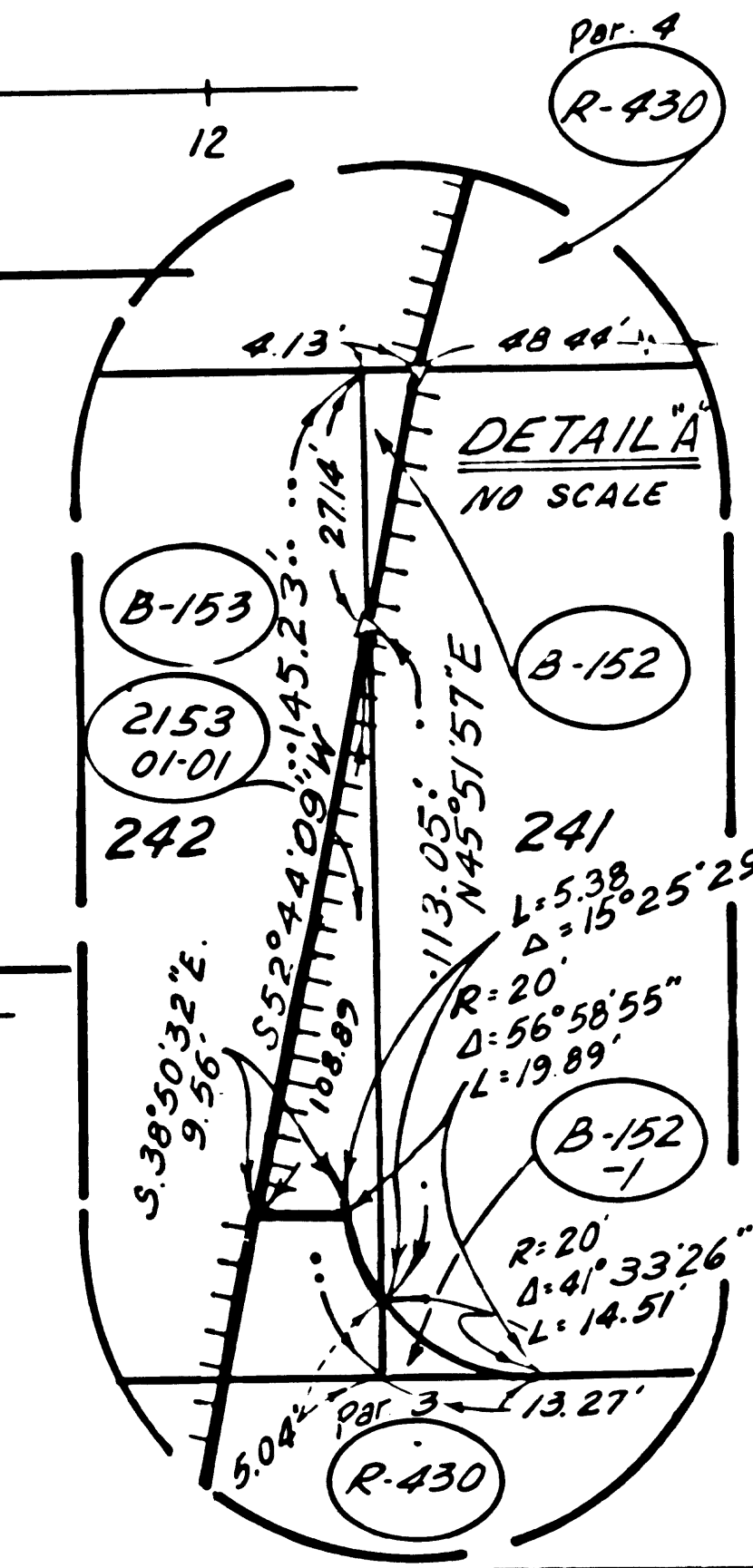
FOR CONTINUATION SEE MAP NO F 2062-2

FOR CONTINUATION SEE MAP NO. F 2061-2

MAP NO. P27318

CONTINUATION SEE

FOR



PARCEL NO	GRANTOR OR GRANTEE	INST	RECORDING DATE	OR
1	M W Wilkinson et al	Fee	4-9-46	23076-38
2	S Levy et al	Fee	10-17-46	23833-288
3	W L Strickler	Fee	3-1-46	22862-206
4	M Gerrard	Fee	2-27-43	19719-400
31	A C Harris et ux	Ease	2-11-35	13280-108
100	W L Strickler	Fee	11-13-33	43161-256
101	E L Huyck et vir	Fee	12-5-51	37782-249
102	J G Bonds	Fee	6-12-52	39149-429
103	R J Gagnon et ux	Fee	12-20-51	37898-200
104	E Teal et vir	Fee	12-18-51	37877-149
106	M M Parmenter et ux	Fee	1-8-52	38000-204
107	J S Yeatts	Fee	8-14-52	39618-152
126	Std Oil Co of Calif	Fee	9-19-52	39888-314
129	A Harris et ux	Fee	12-18-51	37877-162
132	A J Clark	Fee	1-4-52	37980-43
133	C Castro	Fee	1-4-52	37973-223
134	G P Williams	Fee	1-8-52	37996-368
135	A C Vandiver et al	Fee	1-3-52	37971-80
B 153	H Hunt Jr et ux	Fee	6-29-62	D1667-878
B 154	G Claussen	Fee	5-31-61	D1631-899
B 155	L Kazliner	Fee	5-29-62	D1630-254
B 156	I Perno et al	Fee	3-4-64	D2382-854
B 157	E Salter et ux	Fee	5-29-62	D1630-251
B 158	R A Barcus	Fee	11-13-63	D2253-323
B 159	W L Strickler	Fee	8-9-63	D2139-93
B 160	Estate of C M Huyck	Fee	1-11-63	D1882-332
B 161	A M Oldfield et al	Fee	12-17-63	D2192-602
B 162	R J Gagnon et ux	Fee	9-3-63	D2162-736
B 163	H P Stone et ux	Fee	8-28-63	D2161-766
B 164	H P Stone et ux	Fee	10-25-63	D2233-40
B 166	Guarino Enterprises Inc	Fee	9-28-64	D2642-439
B 167	A Broderick et al	Fee	8-13-64	D2588-192
B 168	A Harris	Fee	7-22-63	D2112-408
B 169	Standard Oil Company	Fee	10-7-63	D2208-640
B 170	PG Collins et al	Fee	6-15-64	D2510-128
B 171	Z Moss et al	Fee	10-27-61	D1401-485
B 172	L Rosen	Fee	7-8-60	D304-284
D-B172	State to City of Santa Monica	DD	5-4-64	D2458-789
B1884	E Donatoni	Fee	2-4-60	D740-82
B1885	M C Hooker et ux	Fee	2-15-60	D748-681
B1886	E Cunningham et al	Fee	12-21-59	D698-772
B1887	R D Stapleton et al	Fee	3-21-60	D787-112
B1888	G E Moore et ux	Fee	3-24-60	D791-667
B1889	W E Thompson et al	Fee	1-21-60	D726-685
Rel 430	State to City of Santa Monica	Rel	12-22-66	R2676-439
B 152	R P Botsford et ux	Fee	10-11-62	D1786-235
B 152-1	R P Botsford et ux	Fee	10-11-62	D1786-235
D-B 161	State to Jules C Gristone et al	DD	6-29-71	D5105-743
For Part 2 of Rel 430, See F-2061-2 & F-2061-2A				
C766-3	Santa Monica Uni Sch Dist	Fl Eas	10-8-64	D2656-626
C766-6	Santa Monica Uni Sch Dist	Fee	10-8-64	D2656-626

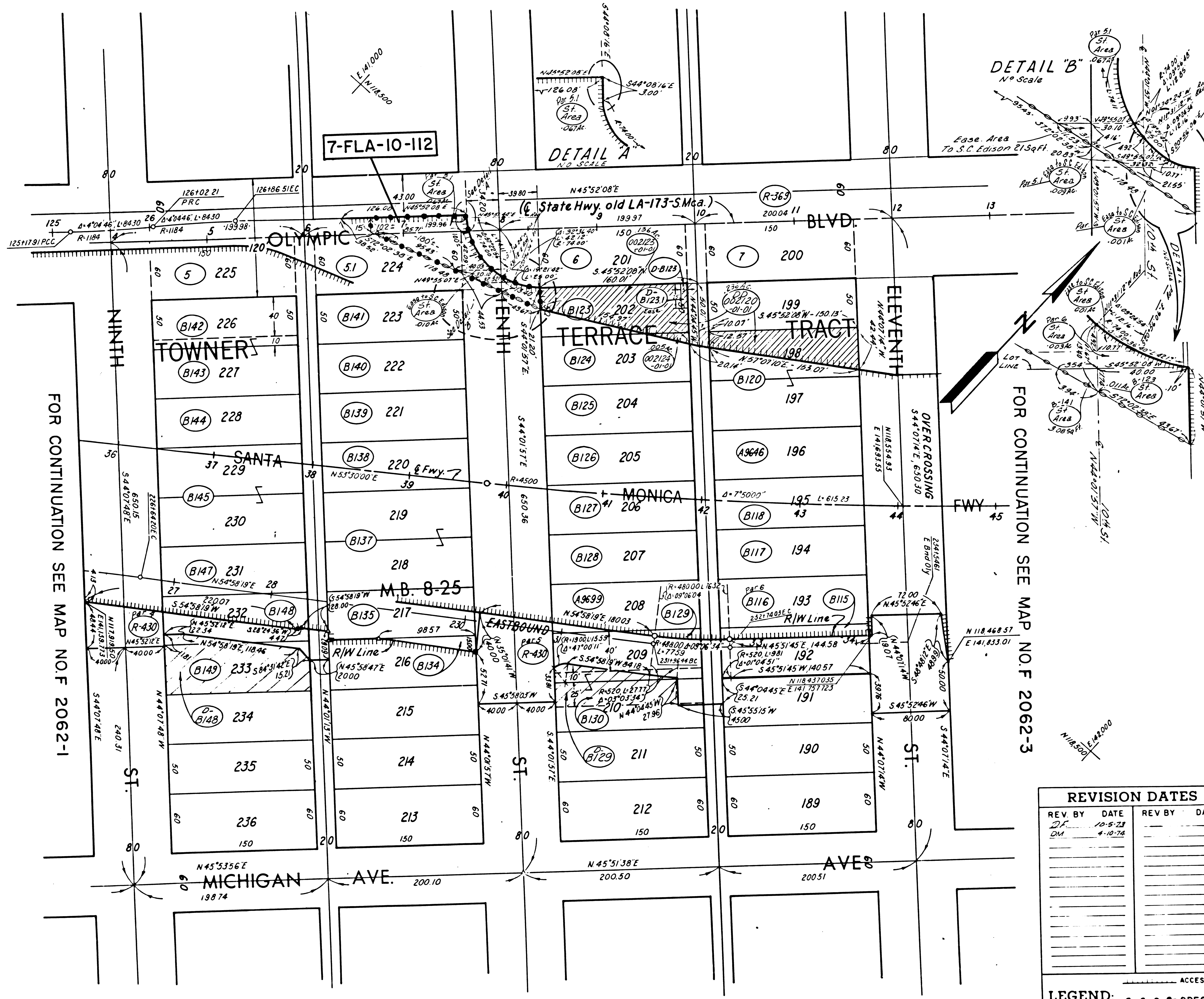
REV BY	DATE	REV BY	DATE
RK	11-7-73		

STATE OF CALIFORNIA
 TRANSPORTATION AGENCY DEPARTMENT OF PUBLIC WORKS
 DIVISION OF HIGHWAYS
 7-LA-10 PM2.16
RIGHT OF WAY RECORD MAP
 SEVENTH ST. to NINTH ST.
 SCALE 1"=50'
 DRAFT G.E. Kinney
INTERSTATE

LEGEND: ACCESS DENIAL LINE TOP OF CUT TOE OF FILL
 IF MORE THAN ONE BEARING AND DISTANCE IS SHOWN FOR A LINE, THE ONE IN PARENTHESES IS PREVIOUS RECORD
 FILE NO. F 2062-1

FM 21687-1

Date: 3-10-71



DETAIL "B"
No Scale

DETAIL A
No Scale

PARCEL NO.	GRANTOR OR GRANTEE	INST	RECORDING DATA	
			DATE	OR
5	F Teal	Fee	4-25-46	23135-72
5.1	F Teal	Fee	4-25-46	23135-82
6	AC Harris, et ux	Fee	10-29-42	19651-174
7	WM Barnard	Fee	6-27-42	19410-212
B115	L D Frankforter, et ux	Fee	7-19-62	D1690-75
B116	I Piperno, et al	Cond	2-25-64	D2371-603
B117	LE McDonough	Fee	10-18-60	D1009-155
B118	CJ Vallely, et ux	Fee	7-26-62	D1698-221
B120	OM Hayden, et al	Fee	3-5-63	D1941-831
B123	FD Dorman	Fee	8-10-62	D1717-996
B124	Estate of WJ Gunn	Fee	11-8-62	D1816-504
B125	RE Tieman, et ux	Fee	6-20-62	D1656-40
B126	CO Schmitt, et ux	Fee	3-22-60	D788-558
B127	DC Johnson	Fee	7-19-62	D1690-98
B129	Estate of H Lewin	Fee	2-16-62	D1515-14
B130	J Quintana, et ux	Fee	5-11-63	D1948-115
B134	AC Alverson	Fee	5-10-63	D2024-129
B135	HE Davis, et al	Fee	7-30-62	D1701-816
B137	ALiabman, et ux	Fee	3-7-63	D1944-971
B138	NC Weight, et ux	Fee	6-22-62	D1659-510
B140	GA Buckhoy, et vir	Fee	10-3-62	D1776-803
B141	BK Stark, et al	Fee	9-21-62	D1764-227
B142	E Higgins	Fee	3-15-63	D1954-971
B143	Estate of F Higgins, dec	Fee	5-17-63	D2032-794
B144	FM Tremblay	Fee	11-15-62	D1823-442
B145	O Ziffer, et ux	Fee	7-19-62	D1690-72
B147	AM Oldfield, et ux	Fee	1-17-63	D1888-977
B148	AA Madrid, et ux	Fee	7-6-62	D1615-643
B149	FL J Chappelle	Fee	6-14-62	D1648-694
A9699	M Kramer, et al	Fee	8-17-59	D513-257
A9646	LL Harris, et ux	Fee	9-17-59	D605-292
R-4302	State to City of Santa Monica	Rel.	12-22-66	R2676-439/441
R-369	State to City of Santa Monica	Rel.	3-28-66	R2323-769
B128	G Aronowitz, et ux	Fee	12-8-61	D1444-972
B139	RL Riddle, et ux	Fee	5-16-60	D846-742
D-B129	State to P Maschler	D.D	7-25-69	D4446-792,791
D-B148	State to P Maschler	D.D	7-25-69	D4446-792,793
D-B123	State to So. Cal. Edison Co.	D.D	7-9-70	D4767-914
D-B123.1	State to General Tel. Co. of Cal.	D.D	8-24-70	D4791-192,159
002220-001	State to Taura	D.D	8-7-73	D5273-427

FOR CONTINUATION SEE MAP NO F 2062-1

FOR CONTINUATION SEE MAP NO F 2062-3

REVISION DATES			
REV. BY	DATE	REV. BY	DATE
DF	10-5-73		
DM	4-10-74		

STATE OF CALIFORNIA
 TRANSPORTATION AGENCY DEPARTMENT OF PUBLIC WORKS
 DIVISION OF HIGHWAYS
 7-LA-10 PM2.31
RIGHT OF WAY RECORD MAP
 NINTH ST. to ELEVENTH ST.
 SCALE 1"=50'
 DRAFT G.E. Kinney

LEGEND: ——— ACCESS DENIAL LINE ——— TOP OF CUT ——— TOE OF FILL
 ●●●●● SPECIAL USE AREA

FM 21687-2

INTERSTATE

FILE NO. 2062-2

Date:

3-10-71



FOR CONTINUATION SEE MAP NO. F 2062-2

FOR CONTINUATION SEE MAP NO. F 2062-4

PARCEL NO	GRANTOR OR GRANTEE	INST	RECORDING DATE	OR DATE
87*	M.W. Wilkinson et al	Cond	11-19-46	23856-430
9	C.J. Burnett, et ux	Fee	11-9-42	19700-71
10	A.C. Harris, et ux	Fee	10-29-42	19634-6
11*	M.W. Wilkinson, et al	Cond	11-19-46	23856-430
B79	G. Oosting, et ux	Fee	6-21-62	D1637-182
B80	C.B. Ewing, et ux	Fee	5-28-62	D1628-646
B81	R. Badel, et ux	Fee	4-25-62	D1591-726
B82	R.M. Brixen	Fee	10-26-62	D1803-385
B83	F. Stuart, et ux	Fee	4-25-62	D1591-721
B84	V.C. Perry	Fee	7-20-62	D1631-628
B87	A.M. Cannon	Fee	11-6-64	D2690-617
B88	V.P. Barrozo	Fee	5-25-62	D1627-52
B89	S. Herman, et ux	Fee	9-15-59	D602-65
B90	D.C. Parker, et al	Fee	5-22-62	D1622-325
B91	E.O. Hanlon, et ux	Fee	6-22-62	D1659-521
B92	W.F. Johnson, et ux	Fee	10-23-62	D1798-551
B96	J.B. Maxwell, et ux	Fee	10-16-62	D1790-8
B97	E. Thompson	Fee	5-16-62	D1616-269
B98	M.E. Wharton, et ux	Fee	6-27-62	D1664-251
B100	G. Deliman, et ux	Fee	5-7-62	D1598-537
B101	D.J. Nonemaker, et vir	Fee	5-8-62	D1606-900
B99	J.H. Matheny, et ux	Fee	6-15-62	D1650-710
B106	S. Hara	Fee	6-15-62	D1650-730
B107	F.A. Porter, et ux	Fee	6-20-62	D1656-37
B108	F.A. Teutimez, et ux	Fee	6-15-62	D1650-144
B109	H.E. Behling, et ux	Fee	6-14-62	D1648-687
B110	H.E. Howsley, et ux	Fee	6-20-62	D1667-844
B111	W. McCarter, et al	Fee	8-30-62	D1740-655
R-369	State to City of Santa Monica	Rel	3-28-66	R-2523-769
R-430 687	State to City of Santa Monica	Rel	12-22-66	R-2676-439/441
D-B84	State to C.W. Collins, et ux	D.D.	5-7-69	D4362-775
D-B87	State to City of Santa Monica	D.D. Exec	5-15-69	D4371-69
D-B96	State to C.A. Preston, Jr., et ux	D.D.	9-16-69	D4498-389/391
D-B111	State to P.I. Tabares, et ux	D.D.	9-16-69	D4498-392/394

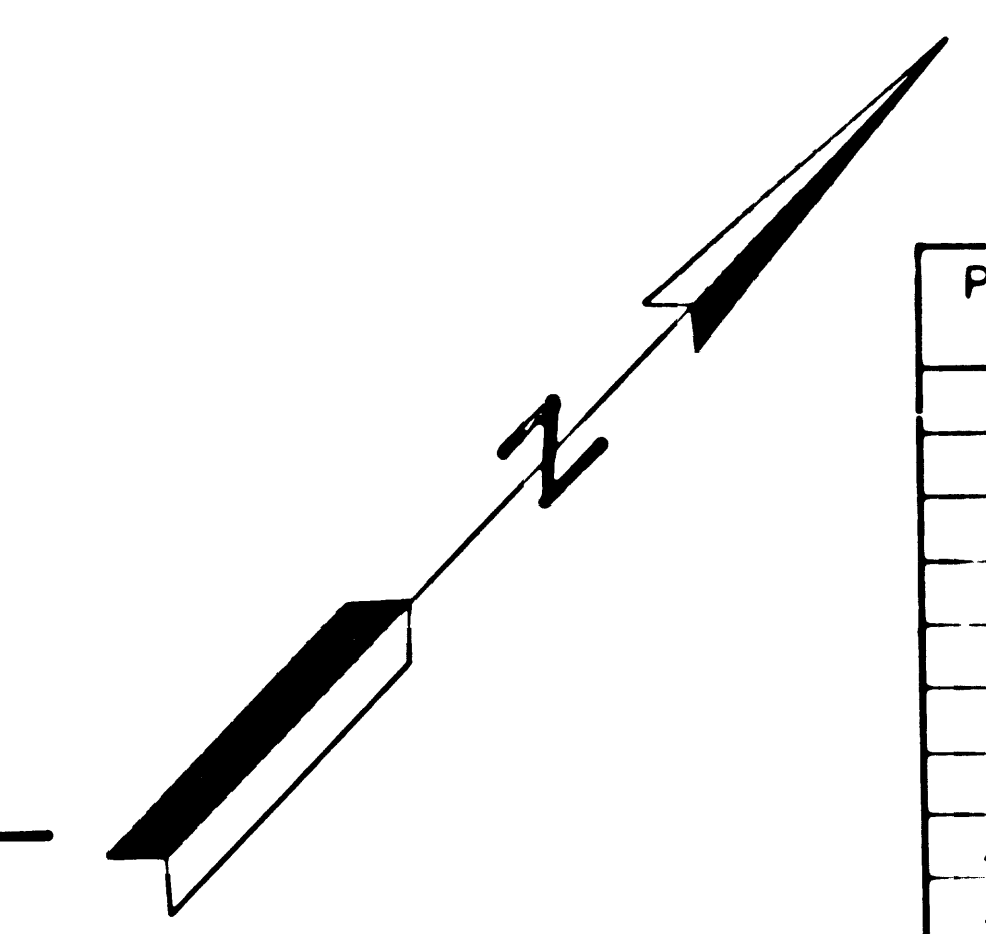
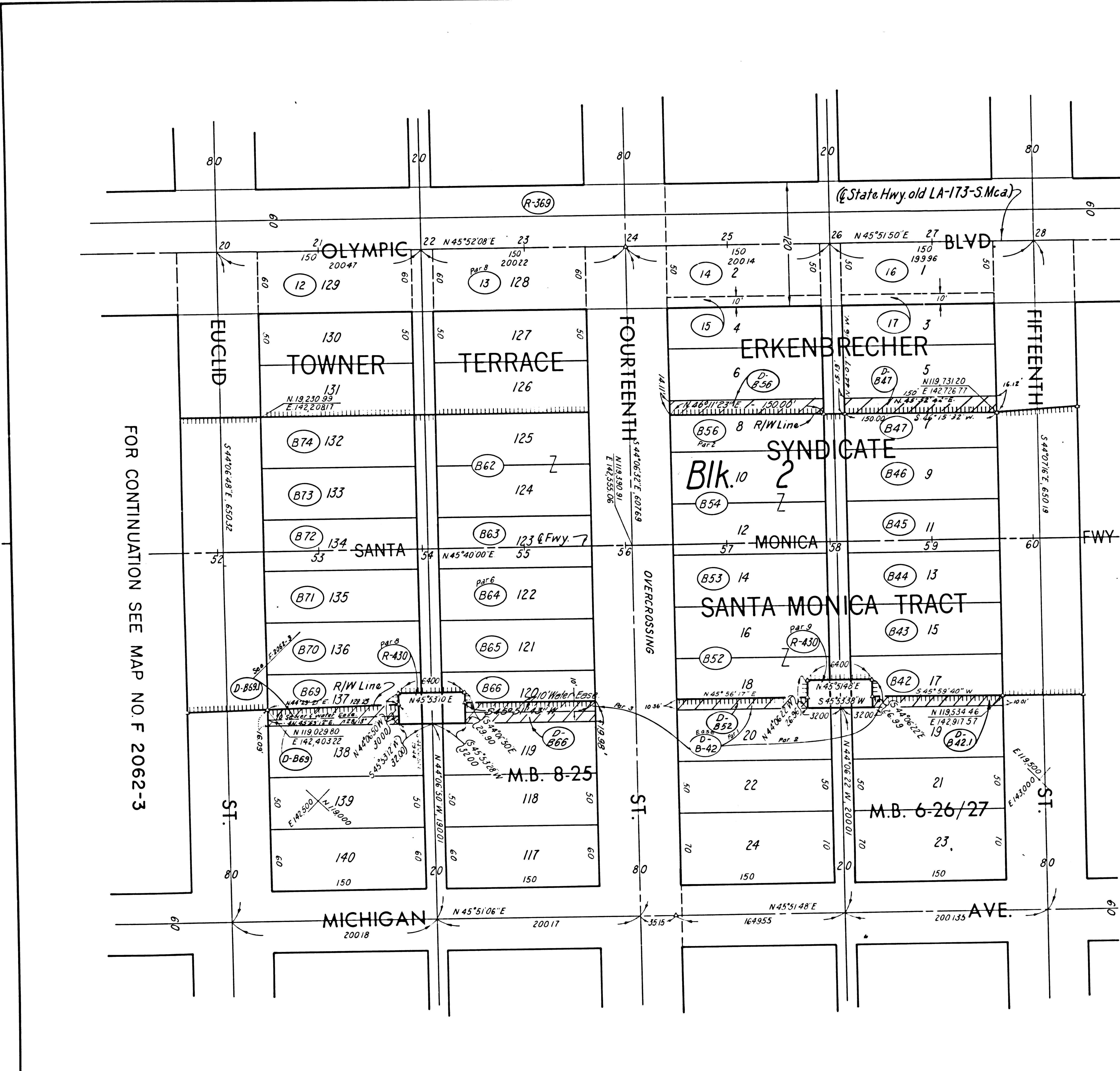
REVISION DATES			
REV BY	DATE	REV BY	DATE

STATE OF CALIFORNIA
 TRANSPORTATION AGENCY DEPARTMENT OF PUBLIC WORKS
 DIVISION OF HIGHWAYS
 7-LA-10 PM246
 RIGHT OF WAY RECORD MAP
 ELEVENTH ST. to EUCLID ST.
 SCALE 1"=50'
 DRAFT G.E. Kinney
 INTERSTATE
 FILE NO. F 2062-3

LEGEND: _____ ACCESS DENIAL LINE _____ TOP OF CUT _____ TOE OF FILL

FM 21687-3

Date: _____



PARCEL NO	GRANTOR OR GRANTEE	INST	RECORDING DATE	OR
12	S. Alpart, et ux	Fee	6-27-42	19437-66
13 ^{PAR 8}	MW Wilkinson, et al	Cond	11-19-46	23856-430
14	HL Pray	Fee	6-12-42	19416-62
15	RH Bird	Fee	12-18-42	19768-109
16	E Teal et vir	Fee	4-25-46	23081-291
17	J Harrison	Fee	6-8-45	22023-216
B 42	M Bishop, et ux	Fee	7-19-62	D1690-65
B 43	GL Griffin	Fee	4-18-62	D1586-43
B 44	JL Bustamante	Fee	3-15-62	D1544-896
B 45	M S Smith	Fee	5-25-62	D1621-112
B 46	F Smith, et ux	Fee	10-15-62	D1787-860
B 47	J Santana Jr, et ux	Fee	9-7-62	D1748-947
B 52	AC Woolard	Fee	8-29-62	D1739-118
B 53	WS Spafford	Fee	10-23-62	D1798-538
B 54	J Gallegos, et al	Fee	12-27-62	D1866-182
B 56 ^{PAR 2}	G Sundby, et al	Cond	10-26-61	D1400-721
B 62	G T Barada	Fee	9-26-62	D1768-774
B 69	FM Judson, et ux	Fee	7-19-62	D1630-77
B 70	B Castillo, et ux	Fee	1-25-63	D1898-534
B 71	EM Schaubert, et vir	Fee	2-15-60	D748-666
B 72	AW Adams, et ux	Fee	4-19-62	D1586-89
B 73	FM Ogawa, et ux	Fee	11-20-62	D1828-287
B 74	EC Shaw	Fee	7-12-62	D1682-2
B 63	CP Monroe, et ux	Fee	10-10-60	D1000-992
B 64 ^{PAR 2}	G Wiederhorn, et al	Cond	7-30-63	D2123-619
B 65	M Velasquez, et ux	Fee	9-11-62	D1750-639
B 66	GM Sunby	Fee	7-20-61	D1293-63
Rel 430 ^{PAR 869}	State to City of Santa Monica	Rel	12-22-62	R2676-439/441
For Continuation of Rel. 430, See F-2063				
D-B 66	State to A. Franco, et ux	D.D.	8-7-68	D-4093-3123/4
Rel. 369	State to City of Santa Monica	Rel	3-28-66	R2523-769
D-B 69	State to Teresa Gomez, et ux	D.D.	12-30-68	D4236-708-710
D-B 56	State to Pete Perry, et ux	D.D.	2-6-69	D4272-277-279
D-B 42	State to City of Santa Monica	P.O. Case	4-1-69	D4324-659/664
D-B 42.1	State to Lessie Revare	D.D.	10-2-69	D4515-338/339
D-B 52	State to Anna L. Brister	D.D.	4-7-70	D4478-264, 257
D-B 69.1	State to City of Santa Monica	D.D.	10-1-69	D4513-995
D-B 47	St. to M.S. Katow, et al	D.D.	11-8-71	D5250-78

FOR CONTINUATION SEE MAP NO. F 2062-3

FOR CONTINUATION SEE MAP NO. F 2063-1

REVISION DATES			
REV. BY	DATE	REV. BY	DATE

STATE OF CALIFORNIA
 TRANSPORTATION AGENCY DEPARTMENT OF PUBLIC WORKS
 DIVISION OF HIGHWAYS
 7-LA-10 PM2.61
RIGHT OF WAY RECORD MAP
 EUCLID ST. to FIFTEENTH ST.
 SCALE 1"=50'
 DRAFT G.E. Kinney

LEGEND: ACCESS DENIAL LINE TOP OF CUT TOE OF FILL
 INTERSTATE
 FILE NO. F 2062-4
 Date: _____

FM 21687-4