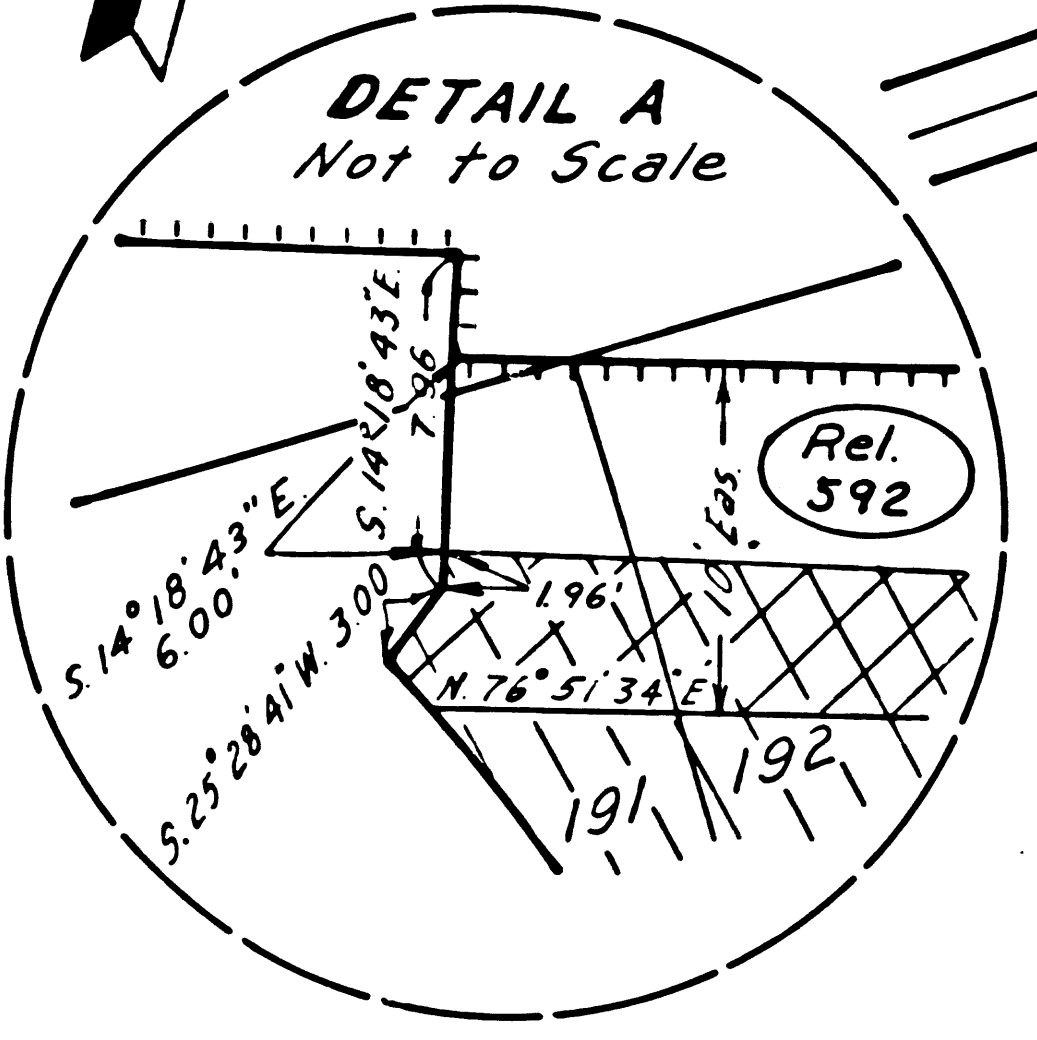




FOR CONTINUATION SEE MAP NO. F 2064-3

FOR CONTINUATION SEE MAP NO. F 2065-2

PARCEL NO.	GRANTOR OR GRANTEE	INST.	RECORDING DATA	
			DATE	OR
A9739	W M Miller, et ux	Fee	4-11-62	D1576-56
A9740	M J Pollard, et ux	Fee	4-16-62	D1581-137
A9741	T Miyake, et al	Fee	5-31-62	D1631-891
A9742	E F Bremer, et ux	Fee	4-27-62	D1595-15
A9743	N Kyriannis, et ux	Fee	5-9-62	D1608-326
A9744	E Parenicha	Fee	7-25-62	D1696-314
A9747	W G Jones, et ux	Fee	9-19-60	D978-724
A9748 Part	K Ige, et al	Fee/Cons	6-21-63	D2075-440
A9749	H Endo, et ux	Fee	5-4-62	D1603-512
A9750	Z Kinoshita, et ux	Fee	5-16-62	D1616-241
A9751	F J Wedberg, et ux	Fee	1-10-62	D1474-518
A9752	G E Reiff	Fee	1-26-62	D1492-974
D-A9752 Part	State to E Baird, et al	DD	10-9-67	D3793-217
D-A9752	State to E Baird, et al	QC	10-9-67	D3793-217
A9753	V R Lancaster, et al	Fee	5-3-62	D1601-814
A9754	R R Albrecht, et ux	Fee	3-28-62	D1558-951
A9755	J P Whiffen, et ux	Fee	5-10-62	D1509-906
A9756	H Ishii, et ux	Fee	4-25-62	D1591-717
A9757	H J Tsurutani, et ux	Fee	8-15-63	D2146-227
A9758	L J Grilikhes, et al	Fee	4-19-62	D1586-77
A9759	E Alderette, et ux	Fee	4-6-62	D1571-134
A9760	Y Kondo	Fee	4-19-62	D1586-69
A9761	T Endow, et ux	Fee	5-2-62	D1600-131
A9762	S Marquez, et ux	Fee	3-26-63	D1966-583
A9763	J S Ushijima, et ux	Fee	6-4-62	D1635-665
A9764	F T Miyata, et ux	Fee	5-2-62	D1600-175
D-A9739.1	State to City of Santa Monica	DD	3-13-68	D3933-562
Rel 430 Part	State to City of Santa Monica	Rel	12-22-66	R2676-439
For par 2 see map F 2061				
For par 3 thru 9 see map F 2062				
For par 10 thru 15 and 17 thru 19 see map F 2063				
For par 20 thru 24 see map F 2064				
Rel 592	State to City of Santa Monica	Rel	10-1-68	R3072-240
D-A9741	State to S D Jones, et ux	DD	12-10-68	D4220-239-241
D-9739	State to Donna Dev Corp	DD	2-6-69	D4272-285-289
D-9742	State to Donna Dev Corp	DD	2-6-69	D-4272-285-289



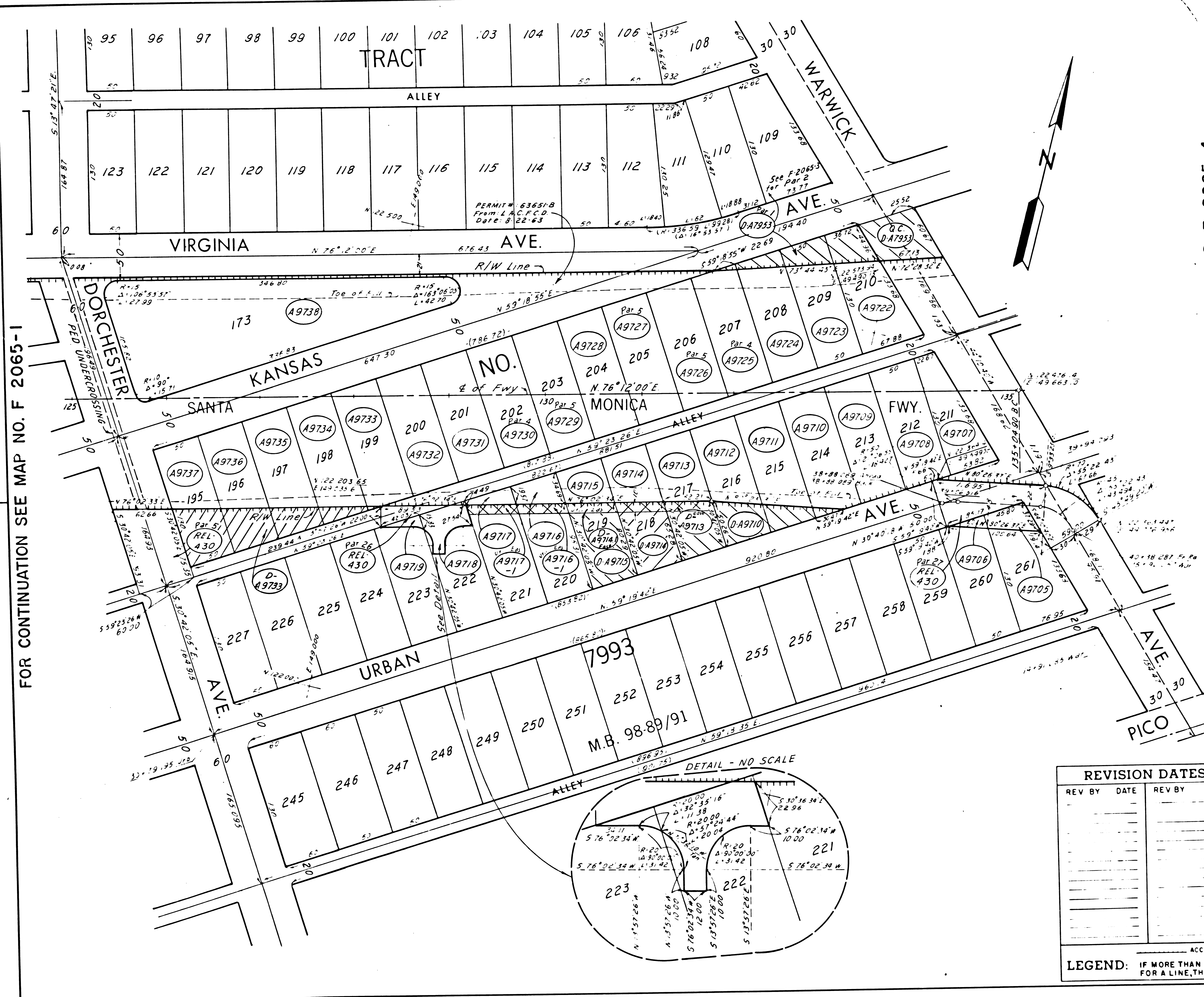
REVISION DATES			
REV BY	DATE	REV BY	DATE

INTERSTATE
 STATE OF CALIFORNIA
 TRANSPORTATION AGENCY DEPARTMENT OF PUBLIC WORKS
 DIVISION OF HIGHWAYS
 07-LA-10 PM 3.8
RIGHT OF WAY RECORD MAP
 YORKSHIRE AVE. to DORCHESTER AVE.
 SCALE 1"=50'
 DRAFT H.Berry

LEGEND: ACCESS DENIAL LINE TOP OF CUT TOE OF FILL
 IF MORE THAN ONE BEARING AND DISTANCE IS SHOWN FOR A LINE, THE ONE IN PARENTHESES IS PREVIOUS RECORD FILE NO. F 2065-1

FM 21690-1

Date:



FOR CONTINUATION SEE MAP NO. F 2065-1

FOR CONTINUATION SEE MAPS NO. F 2065-3 & F 2065-4

PARCEL NO.	GRANTOR OR GRANTEE	INST.	RECORDING DATA	
			DATE	OR.
D-A7953	State to Laurel Finance Co, Inc	DD	11-7-67	D3823-162
D-A7953	State to Laurel Finance Co, Inc	QC	11-7-67	D3823-162
A9705	G M Wilkerson	Fee	12-9-63	D2281-635
A9706	G Martindale	Fee	5-8-62	D1606-894
A9707	W M Moorman	Fee	1-19-62	D1485-299
A9708	F R Griffin	Fee	6-4-62	D1640-856
A9709	R V Enriquez, et ux	Fee	6-1-62	D1633-777
A9710	C A Flintzer, et ux	Fee	6-22-62	D1659-519
D-A9710	State to RE Scheffrin, et ux	DD	5-26-67	D3654-652
A9711	V N Tinnes, et ux	Fee	5-29-62	D1630-279
A9712	D Garduque, et ux	Fee	8-1-62	D1705-380
A9713	K Ogawa, et vir	Fee	6-19-62	D1654-229
A9714	J W Roberts, et ux	Fee	6-18-62	D1652-623
D-A9714	State to RE Scheffrin, et ux	DD	7-7-67	D3696-332
A9715	Est. of V Brinnender	Fee	4-15-63	D1991-420
D-A9715	State to S D Jones, et ux	DD	5-1-67	D3629-609
A9716	T Ige, et ux	Fee	11-27-62	D1834-746
A9716-1	T Ige, et ux	Eas	11-27-62	D1834-746
A9717	M F Fukuda, et ux	Fee	12-4-62	D1843-38
A9717-1	M F Fukuda, et ux	Eas	12-4-62	D1843-38
A9718	D E Javier, et al	Fee	10-23-62	D1798-554
A9719	M McGarey, et ux	Fee	10-16-62	D1789-991
A9722	F Cole, et ux	Fee	8-17-62	D1726-631
A9723	S D Newnes, et ux	Fee	8-24-62	D1734-364
A9724	W L Chance, et ux	Fee	6-14-62	D1648-660
A9725	A L Tsurutani, et al	Fee/Cond	6-3-63	D2050-713
A9726	Cloverfield Biltmore, et al	Fee/Cond	1-30-63	D2342-75
A9727	Z Kinoshita, et al	Fee/Cond	6-14-63	D2066-943
A9728	T Mayeda	Fee	4-12-62	D1577-709
A9729	K Ige, et al	Fee/Cond	6-21-63	D2075-444
A9730	K Ige, et al	Fee/Cond	6-26-63	D2080-545
A9731	H H Mu	Fee	6-7-62	D1639-700
A9732	U Mendoza, et ux	Fee	5-14-62	D1612-963
A9733	M E McCowen	Fee	5-14-62	D1613-4
D-A9733	State to Carl E. Rose, et ux	DD	6-11-69	D4398-489/490
A9734	P Shiro, et ux	Fee	3-29-62	D1560-438
A9735	S T Mason, et ux	Fee	3-29-62	D1560-457
A9736	Est of V Walls	Fee	1-6-65	D2754-595
A9737	G E Miessner, Jr, et ux	Fee	7-17-62	D1686-938
A9738	City of Santa Monica	Fee	7-18-62	D1688-491
D-A9714	State to So. Counties Gas Co.	Rel.	9-4-70	D4824-672/673
Rel 430	State to City of Santa Monica	Rel.	12-22-66	R2676-439
For par 2 see map F-2061				
For par 3 thru 9 see map F-2062				
For par 10 thru 15 and 17 thru 19 see map F-2063				
For par 20 thru 24 see map F-2064				
D-A9713	State to General Telephone	DD	3-15-71	D 4996-425

REVISION DATES			
REV BY	DATE	REV BY	DATE

INTERSTATE

STATE OF CALIFORNIA

TRANSPORTATION AGENCY DEPARTMENT OF PUBLIC WORKS

DIVISION OF HIGHWAYS

07-LA-10 PM 4.0

RIGHT OF WAY RECORD MAP

DORCHESTER AVE. to WARWICK AVE.

SCALE 1"=50'

DRAFT H. Berry

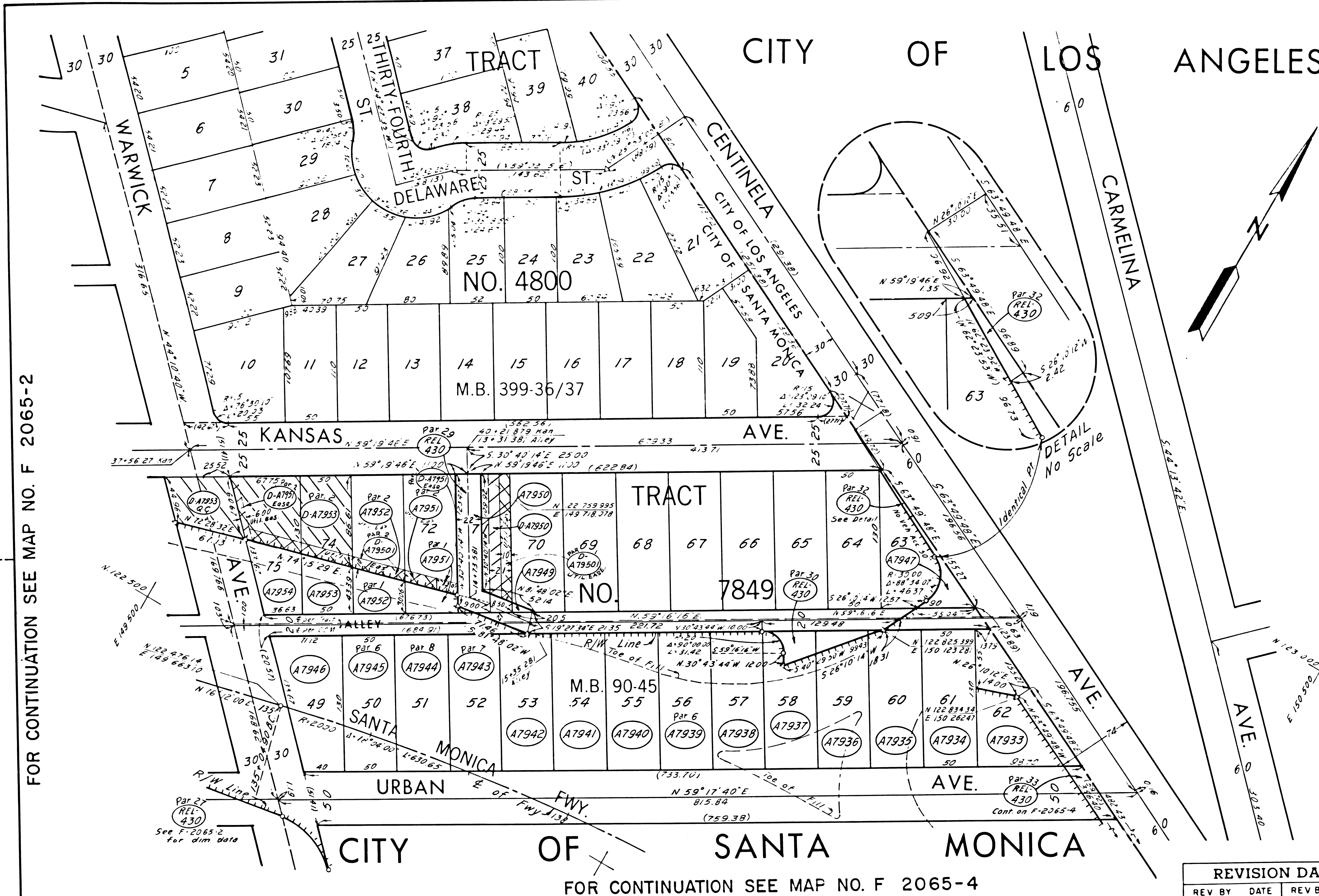
LEGEND: ACCESS DENIAL LINE TOP OF CUT TOE OF FILL

IF MORE THAN ONE BEARING AND DISTANCE IS SHOWN FOR A LINE, THE ONE IN PARENTHESES IS PREVIOUS RECORD.

FILE NO. F 2065-2

Date: _____

FM 21690-2



FOR CONTINUATION SEE MAP NO. F 2065-2

FOR CONTINUATION SEE MAP NO. F 2065-4

PARCEL NO.	GRANTOR OR GRANTEE	INST.	RECORDING DATA	
			DATE	OR.
A7933	F Pagni, et ux	Fee	2-20-62	D1517-769
A7934	D O Mueller	Fee	1-17-62	D1482-358
A7935	F Escobedo, et ux	Fee	2-5-62	D1502-216
A7936	R C Mitchell, et ux	Fee	3-29-62	D1560-485
A7937	D H Williamson, et ux	Fee	2-6-62	D1503-826
A7938	M A Thompson	Fee	1-12-62	D1477-588
A7939	V Casillas, et al	Fee/Cond	5-29-63	D2046-960
A7940	A Lopez, et ux	Fee	4-2-62	D1564-285
A7941	M W Blount, et al	Fee	5-28-63	D2044-490
A7942	A M Hiroshima, et ux	Fee	5-11-62	D1611-452
A7943	K Ige, et al	Fee/Cond	6-14-63	D2066-939
A7944	Z Kinoshita, et al	Fee/Cond	6-3-63	D2050-708
A7945	Z Kinoshita, et al	Fee/Cond	6-3-63	D2050-717
A7946	A Bell, et ux	Fee	1-9-62	D1472-874
A7947	R P Johnson, et ux	Fee	7-19-62	D1690-90
A7949	V Morey, et ux	Fee	9-6-62	D1747-209
A7950	E O Locker, Jr, et ux	Fee	4-4-63	D1979-828
D-A7950	State to V Morey, et ux	DD	11-25-66	D3491-531
A7951	E O Locker, et ux	Fee/Eas	4-1-63	D1974-206
A7952	Dept of Vet Affairs, et al	Fee/Eas	5-28-62	D1628-620
A7953	M Barajas, et ux	Fee	2-28-62	D1526-318
D-A7953	State to Laurel Finance Co, Inc	DD	11-7-67	D3823-162
D-A7953	State to Laurel Finance Co, Inc	DC	11-7-67	D3823-162
A7954	A Koplof, et vir	Fee	5-24-63	D2041-211
Rel-430	State to City of Santa Monica	Rel	12-22-66	R2676-439
For par 2 see map F 2061				
For par 3 thru 9 see map F 2062				
For par 10 thru 15 and 17 thru 19 see map F 2063				
For par 20 thru 24 see map F 2064				
D-A7950.1	State to So Counties Gas Co	DD	11-13-68	D4193-243244-245
D-A7951	State to So. Cal. Edison Co	Ease	2-17-65	D4281-189-192

REVISION DATES			
REV BY	DATE	REV BY	DATE

STATE OF CALIFORNIA
TRANSPORTATION AGENCY DEPARTMENT OF PUBLIC WORKS
DIVISION OF HIGHWAYS
07-LA-10 PM 4.1
RIGHT OF WAY RECORD MAP
WARWICK AVE. to URBAN AVE.
SCALE 1" = 50'
DRAFT H Betty

LEGEND: ACCESS DENIAL LINE TOP OF CUT TOE OF FILL
IF MORE THAN ONE BEARING AND DISTANCE IS SHOWN FOR A LINE, THE ONE IN PARENTHESES IS PREVIOUS RECORD. FILE NO. F 2065-3

FM 21690-3

Date: _____



FOR PARCELS 36, 37 AND 39 THRU 50 SEE F-2066

PARCEL NO.	GRANTOR OR GRANTEE	INST.	RECORDING DATE	OR
A7857	H C Lauder, et al	Fee	7-9-62	D1677-186
A7858	C R Hedding	Fee	1-12-62	D1477-693
D-A7858	State to B L Kramer	DD	7-28-67	D3717-800
A7859	D R Phillips, et ux	Fee	2-5-62	D1502-249
A7860	E Moorshead	Fee	12-20-61	D1456-138
A7861	C R Fielder, et ux	Fee	3-2-60	D1767-57
A7862	W Rimple, et ux	Fee	12-20-61	D1456-151
A7863	E B Gandy, et ux	Fee	2-5-62	D1502-261
A7864	V Scrivo	Fee	4-21-61	D1196-444
A7865	A Theise	Fee	4-20-61	D1194-925
A7866	M Neff, et ux	Fee	6-23-61	D1283-920
A7867	E Di Grazia	Fee	5-18-60	D849-914
A7868	F W Snook, et ux	Fee	12-28-61	D1462-376
D-A7868	State to A K Zwart, et ux	DD	5-29-67	D3656-442
D-A7868.1	State to City of Los Angeles	DD	8-11-67	D3733-356
A7869	L S Powell	Fee	1-25-62	D1491-183
A7870	O Bangarter, et ux	Fee	10-10-61	D1382-463
A7871	L J Pectol, et ux	Fee	2-7-62	D1505-48
A7872	T E Gonzalez, et ux	Fee	7-17-62	D1686-934
A7873	E D Musgrove, et ux	Fee	1-5-62	D1470-8
A7874	A S Perry, et ux	Fee	5-4-61	D1210-489
A7875	J W Phillips, Jr, et ux	Fee	4-13-61	D1187-450
A7876	E F Spangler, et al	Fee	3-30-62	D1562-413
A7877	H McCarry, et ux	Fee	3-11-63	D1948-161
A7877-1	H McCarry, et ux	Eas	3-11-63	D1948-161
A7878	L Kroloff, et ux	Fee	7-24-62	D1694-808
A7878-1	L Kroloff, et ux	Eas	7-24-62	D1694-808
A7879	W J Wurke, et al	Fee	11-2-62	D1811-446
D-A7879	State to L E Savitt, et al	DD	10-3-67	D3787-268
A7880	E S Bleecher, et al	Fee	2-7-63	D1912-853
A7881	A B Droke, et ux	Fee	7-14-61	D1286-517
A7882	A M McKinney, et ux	Fee	5-11-61	D1218-255
A7883	D B Cusworth, et ux	Fee	6-7-61	D1245-28
A7884	C J Erickson, et al	Fee	2-16-62	D1514-864
A7885	I A Podrat, et ux	Fee	5-31-62	D1631-864
A7886	J J Hasty, et ux	Fee	1-19-61	D1097-197
A7887	J R Dailey, et ux	Fee	2-27-62	D1524-679
A7888	I L Rice	Fee	10-9-61	D1380-941
A7889	J F Knapke	Fee	1-22-62	D1486-825
D-A7889	State to A Weingarten, et ux	DD	11-25-66	D3491-519
A7890	A Weingarten, et ux	Fee	3-15-62	D1544-933
A7891	C K Vine, et ux	Rel	11-14-62	R1132-334
A7892	R L M Melick	Fee	3-26-62	D1555-831
D-A7892	J Ricke	DD	2-5-70	D4626-698
A7893	E Sargeant	Fee	5-2-62	D1600-133
A7894	G M Sinclair, et ux	Fee	7-12-62	D1682-6
A7896	R J Begley, et ux	Fee	2-9-62	D1508-1
D-A7871-1	State to City of LA	Rel	11-17-71	D5260-310
Rel-432	State to City of Los Angeles	Rel	12-22-66	R2676-442
DE017879-01-02	ST TO GENERAL TEL CO	DE	1-5-76	D6926-738
D-A7890	A Weingarten	D	1-24-73	D1139-266
D-A7871	K R Krecmer, et ux	DD	3-26-73	D5490-987
D-A7868.2	A K Zwart, et ux	DD	3-1-72	D5372-861
D-A7868	A K Zwart, et ux	DD	3-1-72	D5372-861
DD017896-01-01	State to J.K.S. Inc.	DD	10-16-73	D6052-362
DE017879-01-03	CITY OF LOS ANGELES	DE	11-17-75	D6972-67
D-K-017879-01-04		D-K	8-2-76	D7187-620

FOR CONTINUATION SEE MAP NO. F 2066-1

FOR CONTINUATION SEE MAP NO. F 2065-4

INTERSTATE

STATE OF CALIFORNIA

TRANSPORTATION AGENCY DEPARTMENT OF PUBLIC WORKS

DIVISION OF HIGHWAYS

07-LA-10 PM 4.4

RIGHT OF WAY RECORD MAP

CENTINELA AVE. to AMHERST AVE.

SCALE 1" = 50'

DRAFT H.Berry

REVISION DATES

REV BY	DATE	REV BY	DATE

LEGEND: IF MORE THAN ONE BEARING AND DISTANCE IS SHOWN FOR A LINE, THE ONE IN PARENTHESES IS PREVIOUS RECORD

FILE NO. F 2065-5

Date:

FM 21690-5