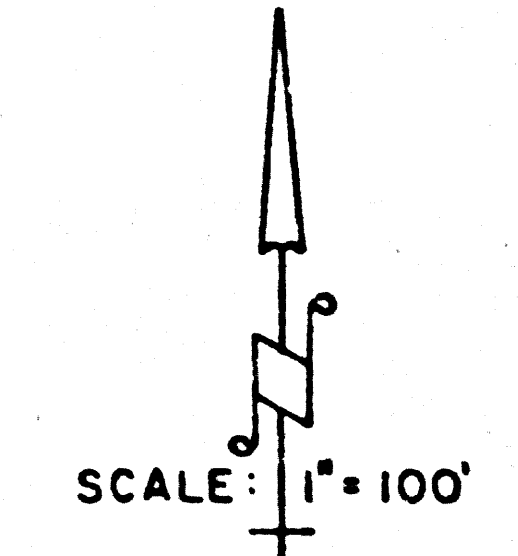
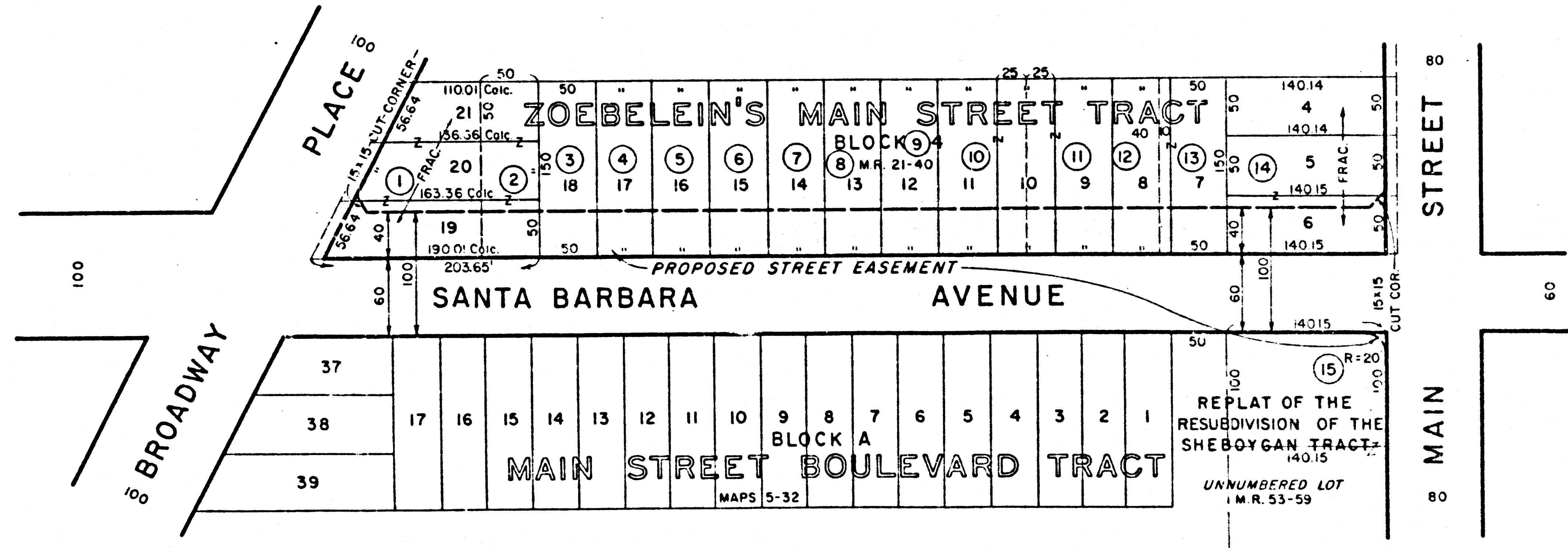


I hereby certify that this is a true and accurate copy of the official city record described here, made in accordance with Section 43a of the Charter of the City of Los Angeles and Section 34090.5 of the Government Code.
 Date 5-5-66
 By [Signature] City Clerk
 H.E. [Signature] Deputy

CERTIFICATE

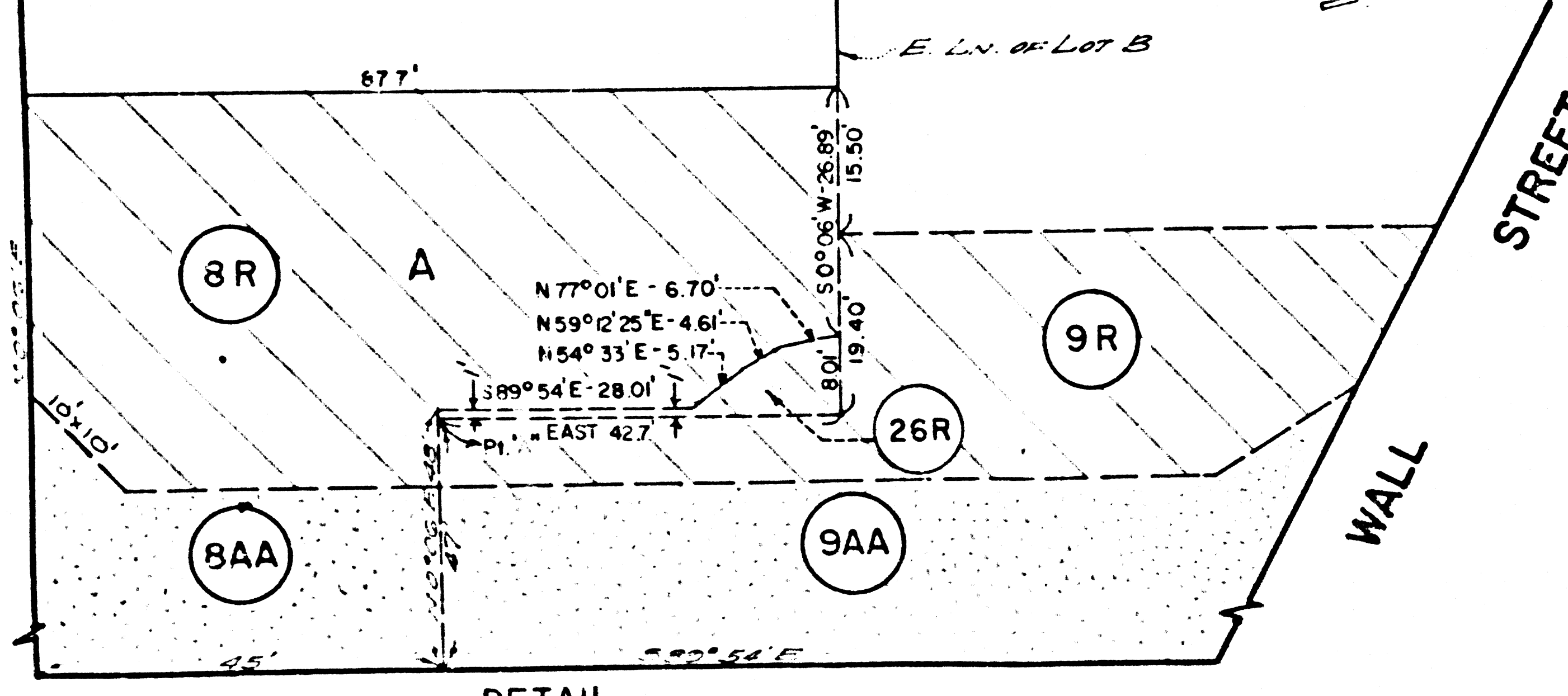
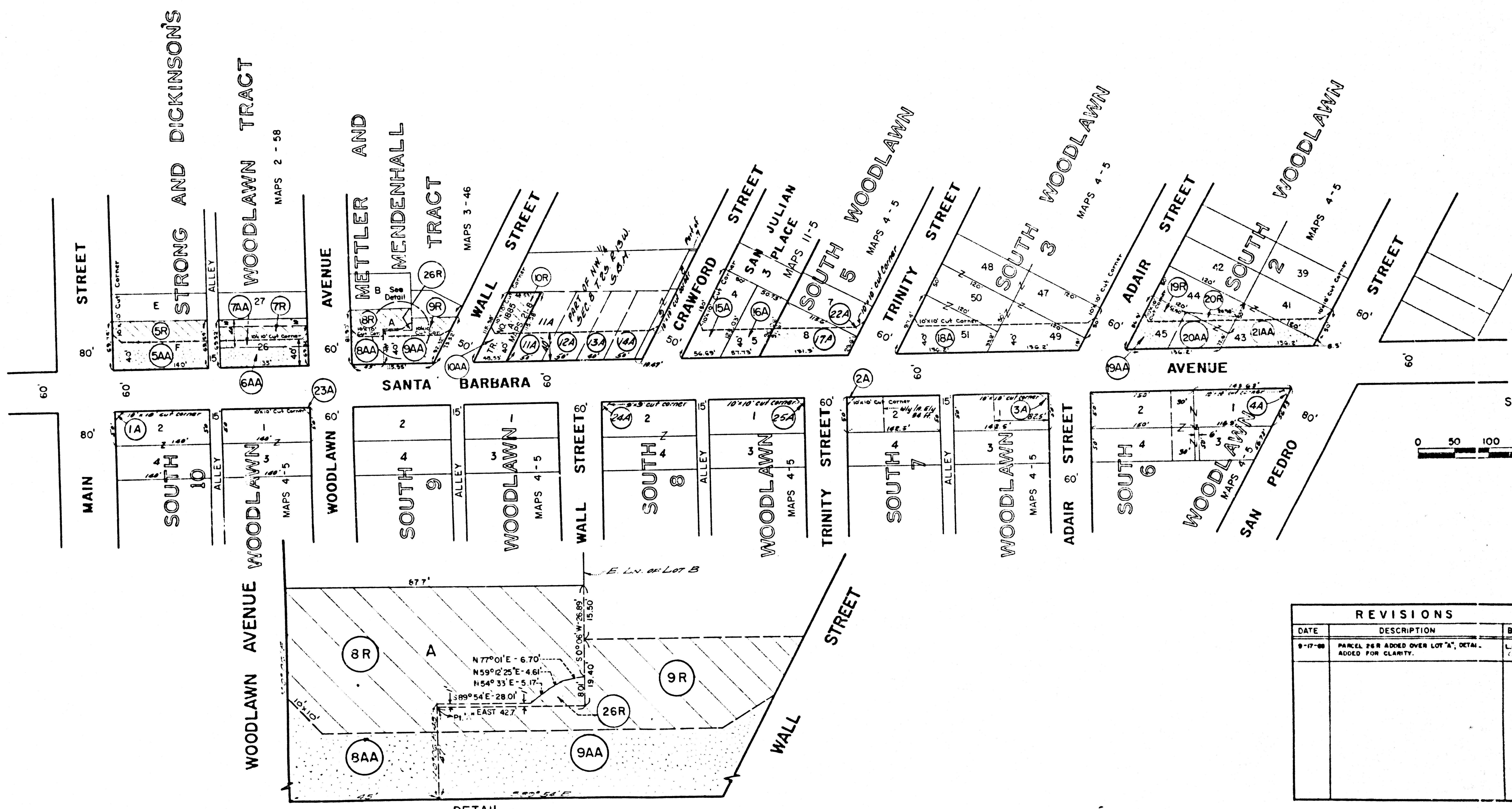


REVISIONS			APPROVALS		
DATE	DESCRIPTION	BY CHK	DIVISION ENGR	CITY ENGINEER	DATE
4-11-67	ST EASE. REVISED IN PARCEL 15	[Signature]	[Signature]	[Signature]	4/12/67

Title SANTA BARBARA AVENUE BETWEEN MAIN STREET AND BROADWAY PLACE Right of Way No. 27782
 Order No. 61559 Dist Map 114-B-201 Div. Index 171
 Clerk's File _____ Council Dist. 9 Engr. Dist. CENTRAL
 Plans & Profiles P-24965 Design Div. PLANNING
 Office Work MAYHEW Ckd. C. Backus Supervised by [Signature]
 Submitted 4-18 1966 Div. Engineer [Signature]
 Approved 4-19 1966 City Engineer [Signature]

R/W27782

FM 21706-1



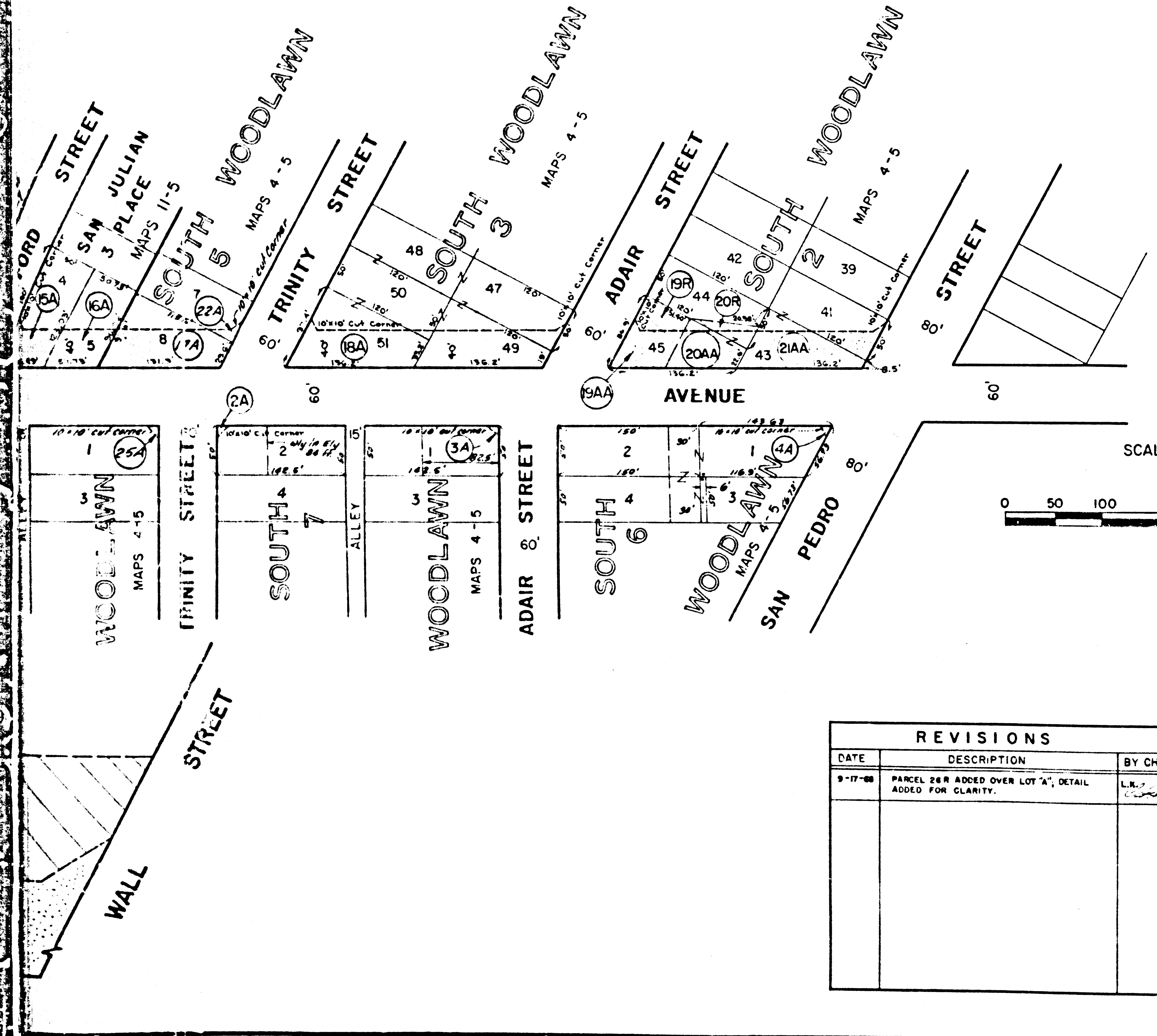
DETAIL
NO SCALE

REVISIONS			
DATE	DESCRIPTION	BY CHK	DIVISION
9-17-88	PARCEL 26R ADDED OVER LOT 'A', DETAIL ADDED FOR CLARITY.	LL	Planning

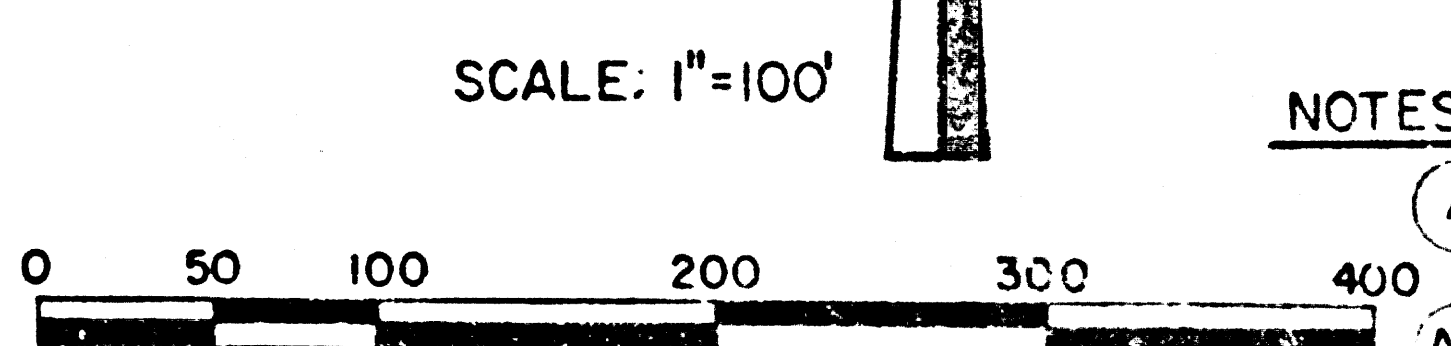
2

WARRANTY
I warrant hereby that this is a true and accurate copy of the original city record described herein, made in accordance with Section 100 of the Charter of the City of Los Angeles, and Section 1490.5 of the Government Code.

FM 21706-2



MAP
 SHOWING CERTAIN REAL PROPERTIES OVER WHICH
 STREET EASEMENTS AND OTHER RIGHTS ARE REQUIRED FOR
SANTA BARBARA AVENUE
 BETWEEN
SAN PEDRO STREET
 AND
MAIN STREET
 IN THE CITY OF LOS ANGELES, CALIFORNIA
 LYALL A. PARDEE, CITY ENGINEER



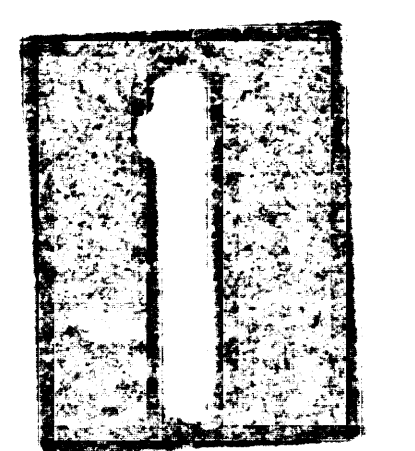
- NOTES:**
- (A) Properties over which easements are to be acquired for Public Street purposes are shown thus:
 - (AA) Properties to be acquired in fee simple for Public Street purposes are shown thus:
 - (R) Properties to be acquired for the establishment and maintenance of Reservations are shown thus:

THIS MAP SUPERSEDES MAP DATED OCT. 7, 1964,
 AS AMENDED AUG. 10, 1966

REVISIONS		APPROVALS			
DATE	DESCRIPTION	BY CHK.	DIVISION ENGR	CITY ENGINEER	DATE
9-17-66	PANEL 2&R ADDED OVER LOT 'A', DETAIL ADDED FOR CLARITY.	L.R.	<i>Alourey</i>	<i>Lyall A. Pardee</i>	

Title SANTA BARBARA AVENUE BET. SAN PEDRO STREET AND MAIN STREET Right of Way No. 27070
 Order No. 91864 Dist. Map 5286 Div. Index 163
 Clerk's File _____ Council Dist. 9 Engr. Dist. CENTRAL
 Plans & Profiles P-23750 Design Div. CENTRAL
 Office Work L. Pardee Ckd. L.A. Supervised by L. Pardee
 Submitted 8-11 1966 Div. Engineer Lyall A. Pardee
 Approved 8-11 1966 City Engineer Lyall A. Pardee

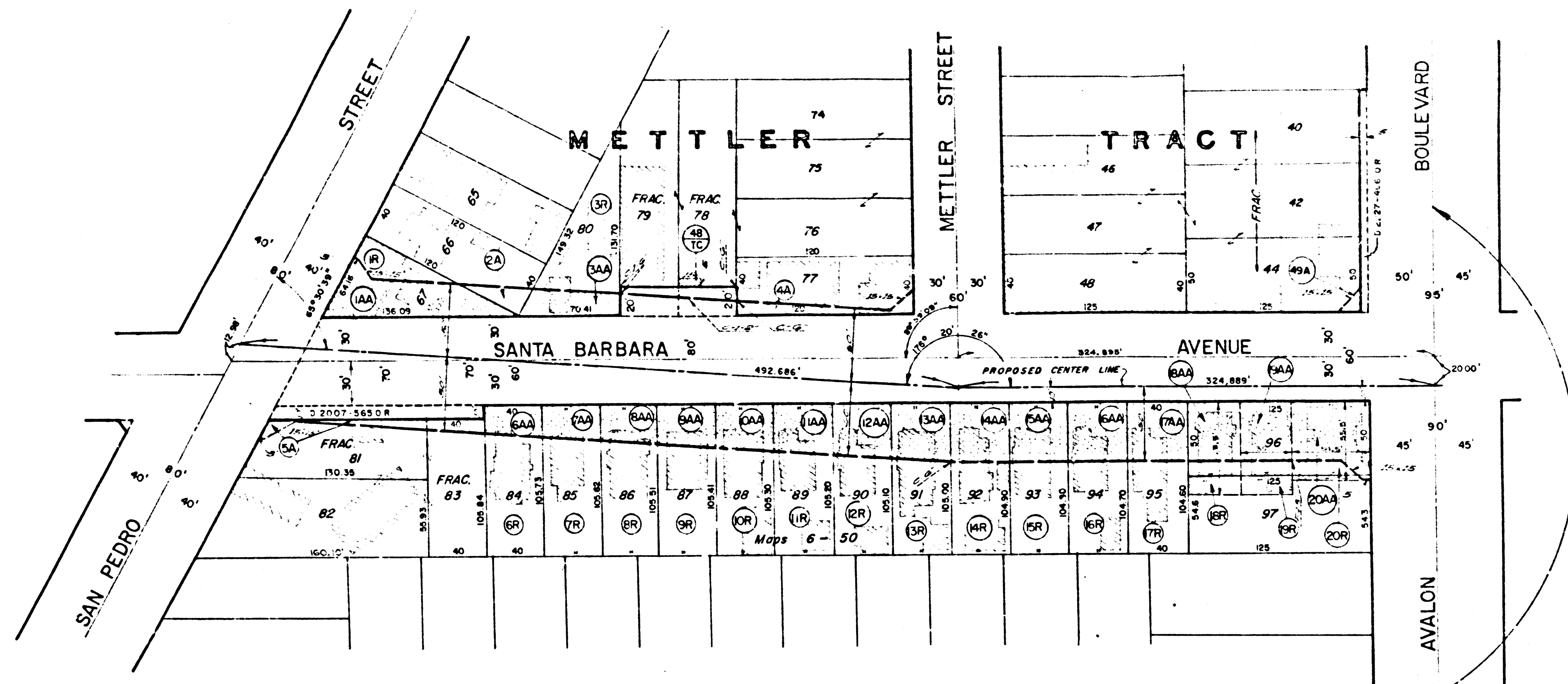
R/W27070



I hereby certify that this is a true and accurate copy of the official city record document hereby made in accordance with section 40 of the Charter of the City of Los Angeles, and Section 2490.5 of the Government Code.
 Date _____

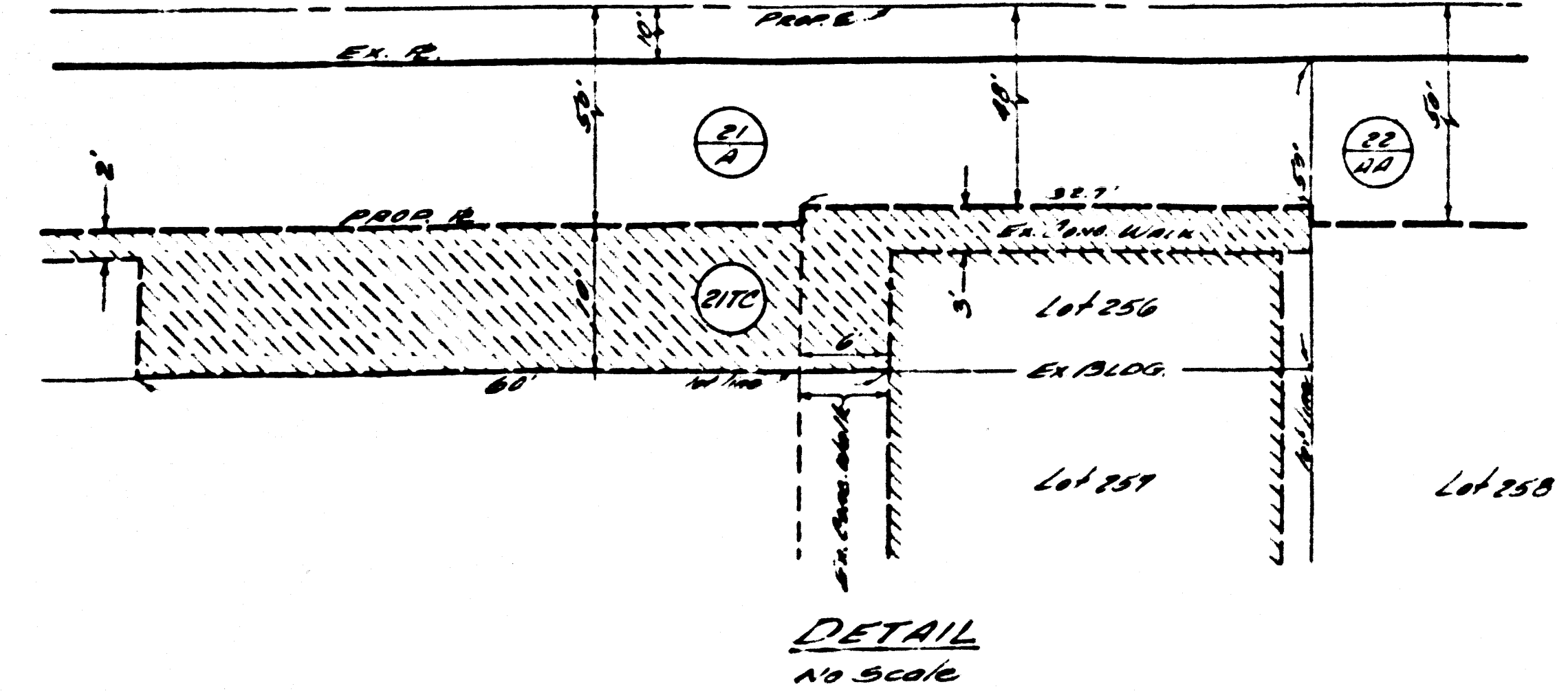
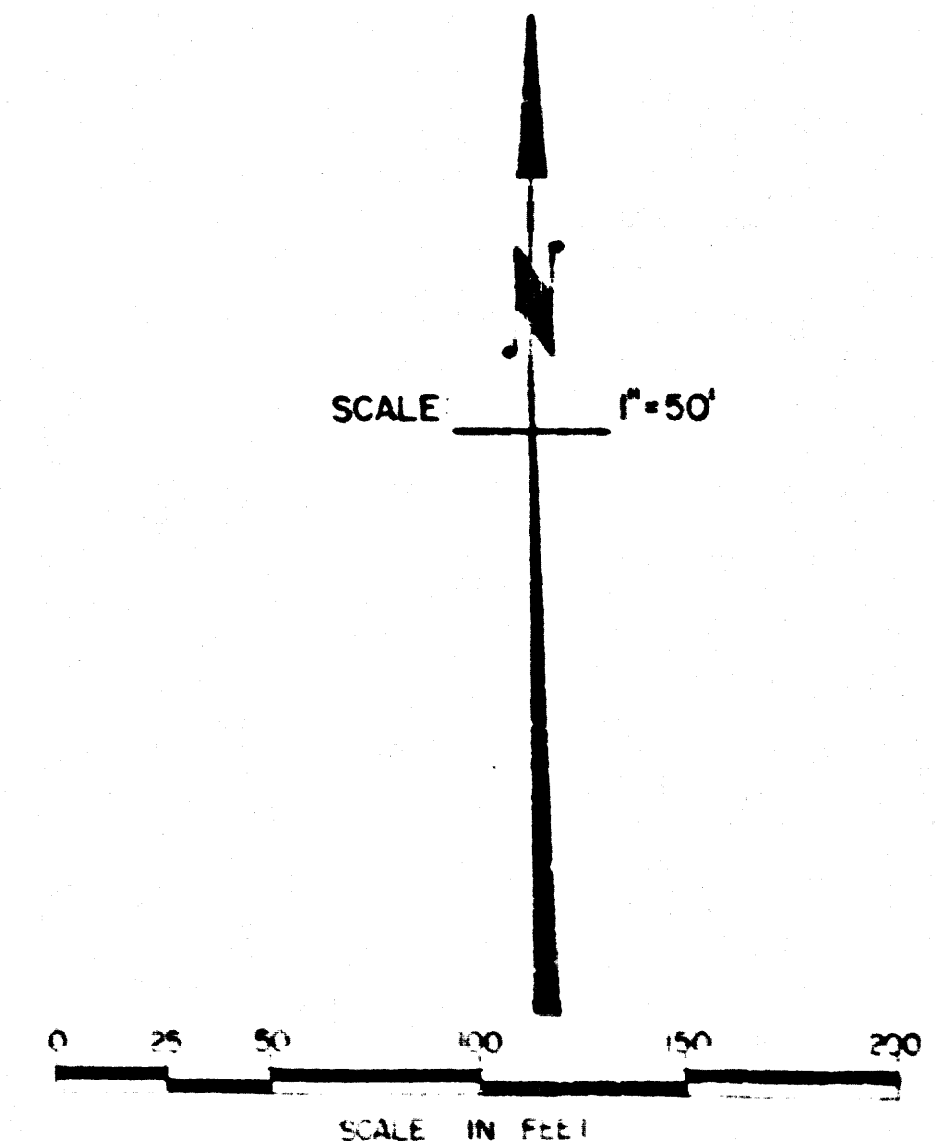
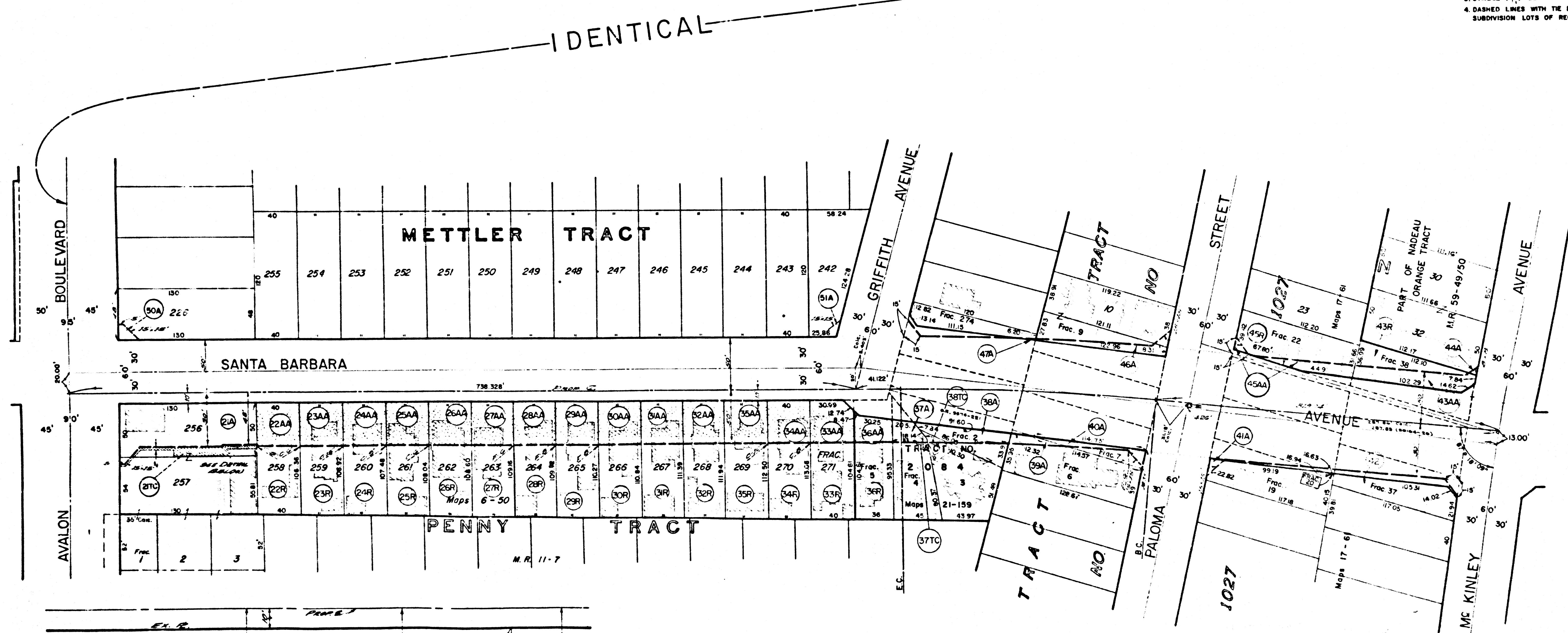
 Deputy

FM 21706-3



- LEGEND**
- (A) Properties over which easements are to be acquired for Public Street Purposes are shown thus: [Symbol]
 - (AA) Properties to be acquired in Fee Simple for Street purposes are shown thus: [Symbol]
 - (R) Properties to be acquired in Fee Simple for Reservation purposes are shown thus: [Symbol]
 - (TC) Properties over which temporary rights are to be acquired for construction purposes are shown thus: [Symbol]

- NOTES:**
1. NUMBER IN CIRCLE IS THE PARCEL NUMBER PER TITLE SEARCH INDICATING EXTENT OF PROPERTY OWNERSHIP.
 2. LETTERS IN CIRCLE INDICATE RIGHTS TO BE ACQUIRED AND ARE KEYS TO LEGEND.
 3. SYMBOL (1) DENOTES LAND UNDER SAME OWNERSHIP.
 4. DASHED LINES WITH THE DIMENSIONS INDICATE PROPERTY HOLDINGS DIFFERING FROM SUBDIVISION LOTS OF RECORD.



CURVE DATA
 A = 5° 26' 24"
 R = 2500'
 L = 238.817'
 T = 119.500'

REVISIONS	APPROVAL

MAP

SHOWING REAL PROPERTIES OVER WHICH EASEMENTS AND/OR OTHER RIGHTS ARE TO BE ACQUIRED IN AND FOR THE CITY OF LOS ANGELES, CALIFORNIA

LYALL A. PARDEE, CITY ENGINEER

TITLE SANTA BARBARA AVENUE BETWEEN McKINLEY AVENUE AND SAN PEDRO STREET Right of Way No. 22257

Order No. 71217 Dist. Map 3284-5366 Dw. Index 163, 164

Clerk's File Council Dist. 9 Engr. Dist. STB F.W.Y.

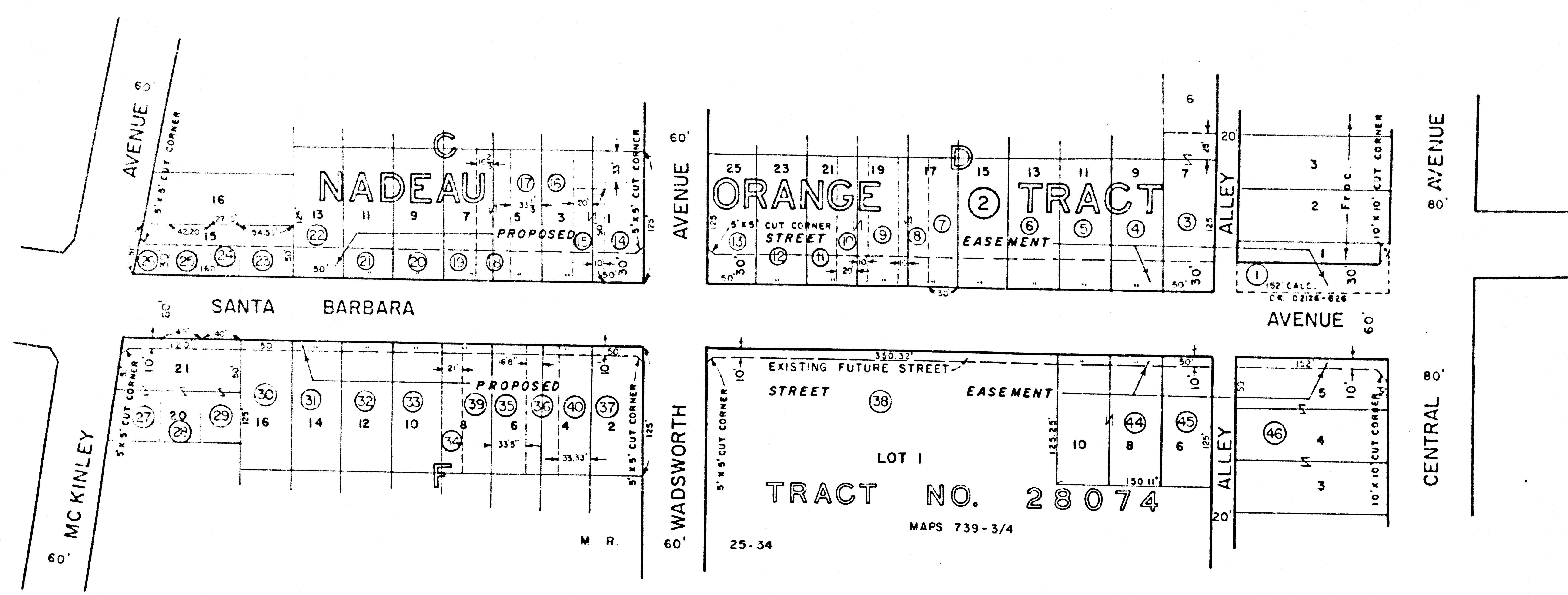
Plan & Profiles P-25725 Design Div. STREET & F.W.Y.

Office Work BROADWAY Cld. 2/27/68 Supervised By [Signature]

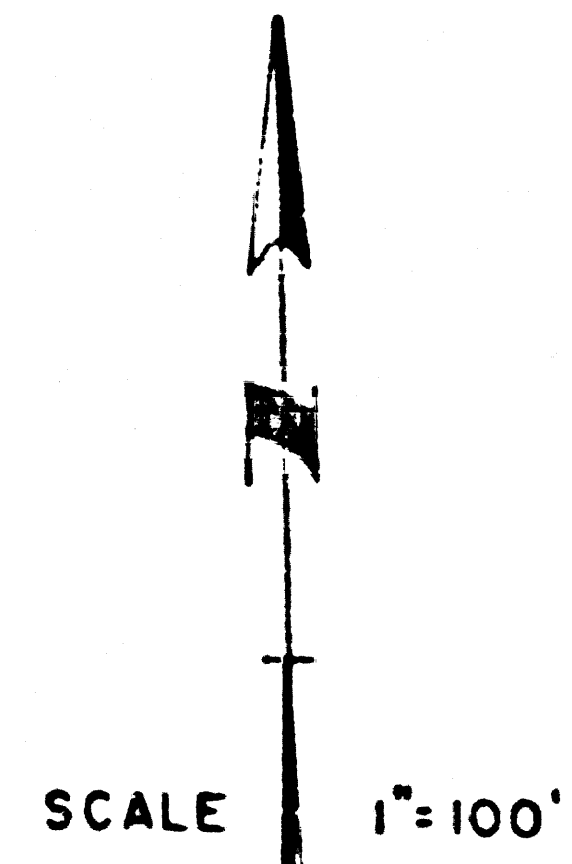
Submitted OCT. 10, 1968 Div. Engineer [Signature]

Approved OCT. 10, 1968 City Engineer [Signature]

FM 21706-4



REVISIONS			APPROVALS		
DATE	DESCRIPTION	BY CHK.	DIVISION ENGR.	CITY ENGINEER	DATE
1-10-65	R/W NO. CHANGED FROM 26417 TO 26175	J.W. C/13	J. J. McLaughlin	J. J. McLaughlin	1-10-65
12-1-65	CHANGED PUBLIC STREET EASEMENT IN PARCEL 38 TO EXISTING FUTURE STREET PER TRACT NO. 28074	J.W. C/13	J. J. McLaughlin	J. J. McLaughlin	12-1-65



R/W 26175

Title: SANTA BARBARA AVE. BETWEEN CENTRAL AVE. AND MCKINLEY AVE. Right of Way No. 26175
 Order No. 81861 Dist. Map 114-B-209 Div. Index 164
 Clerk's File Council Dist. 9 Engr. Dist. CENTRAL
 Plans or Profiles P-23249 Design Div. SAME
 Office Work McMullin Ckd. Kasser Supervised By J. J. McLaughlin
 Submitted Jan 8 1963 Div. Engineer J. J. McLaughlin
 Approved Jan 8 1963 City Engineer J. J. McLaughlin

FM 21706-5