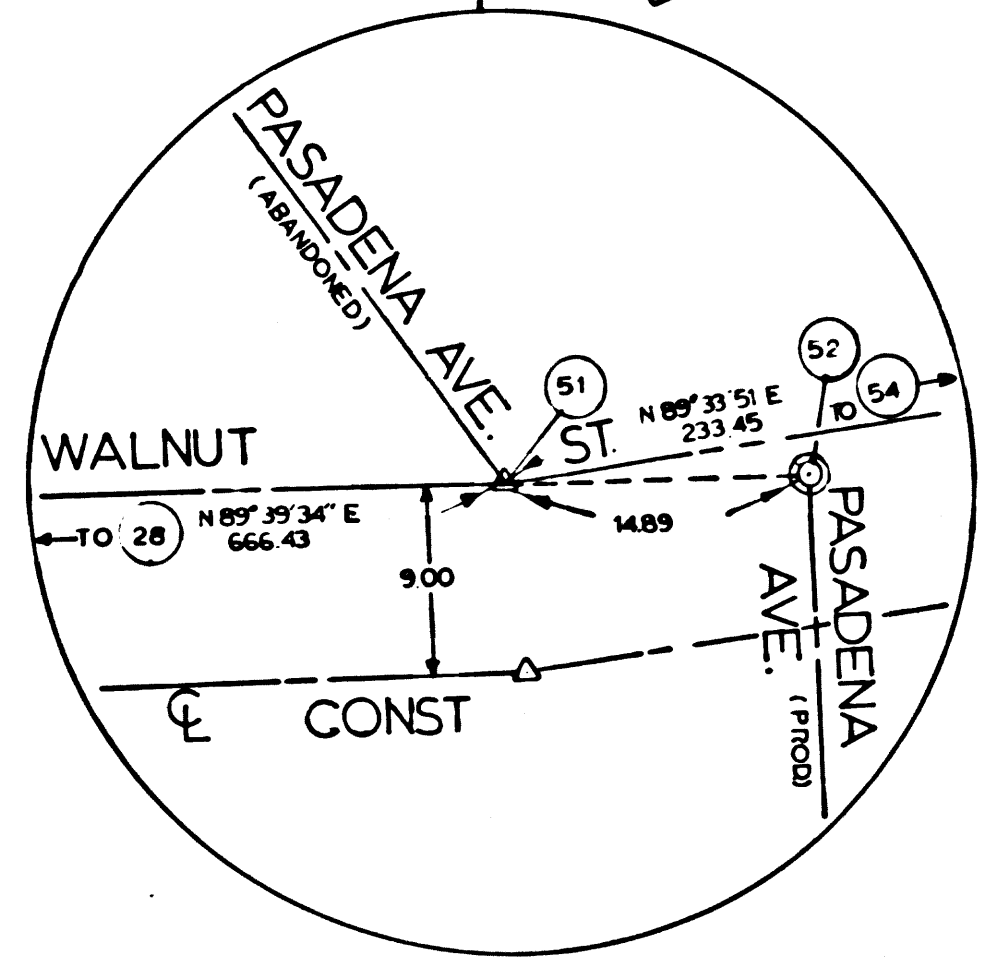
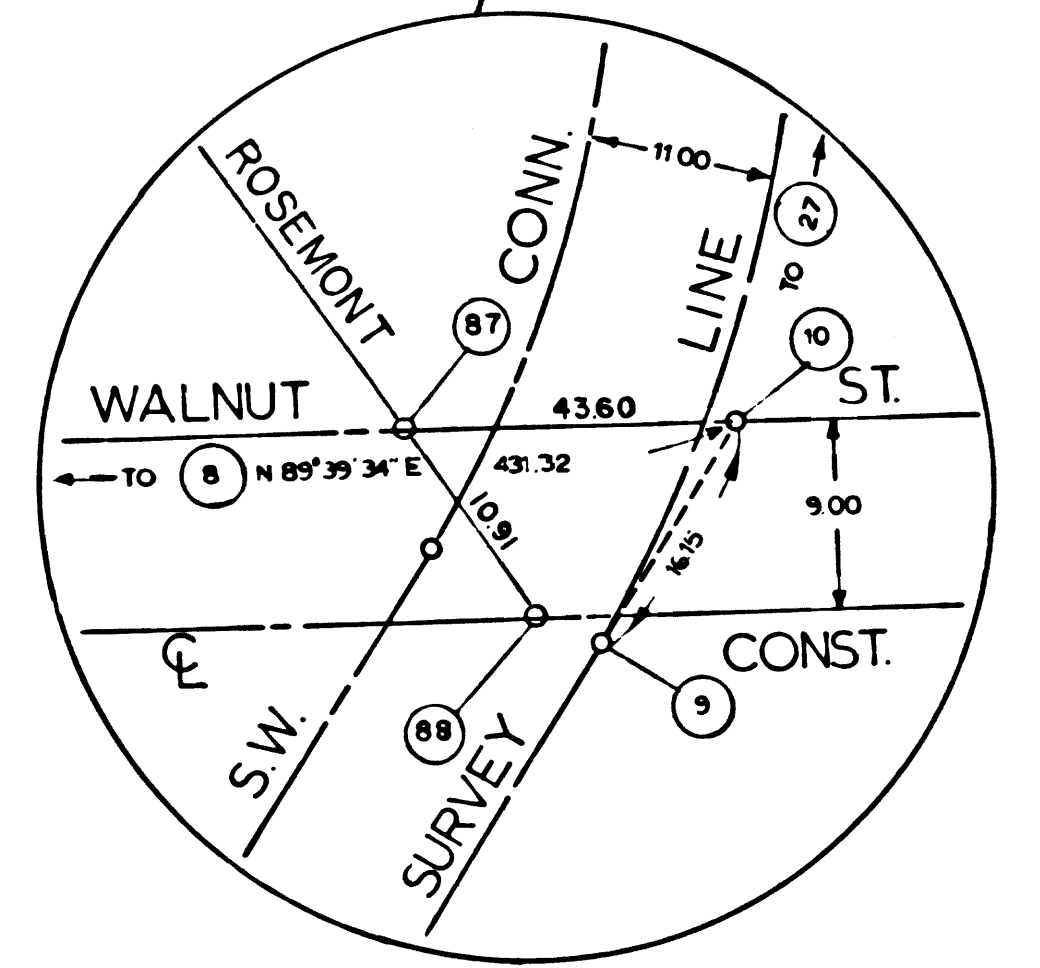
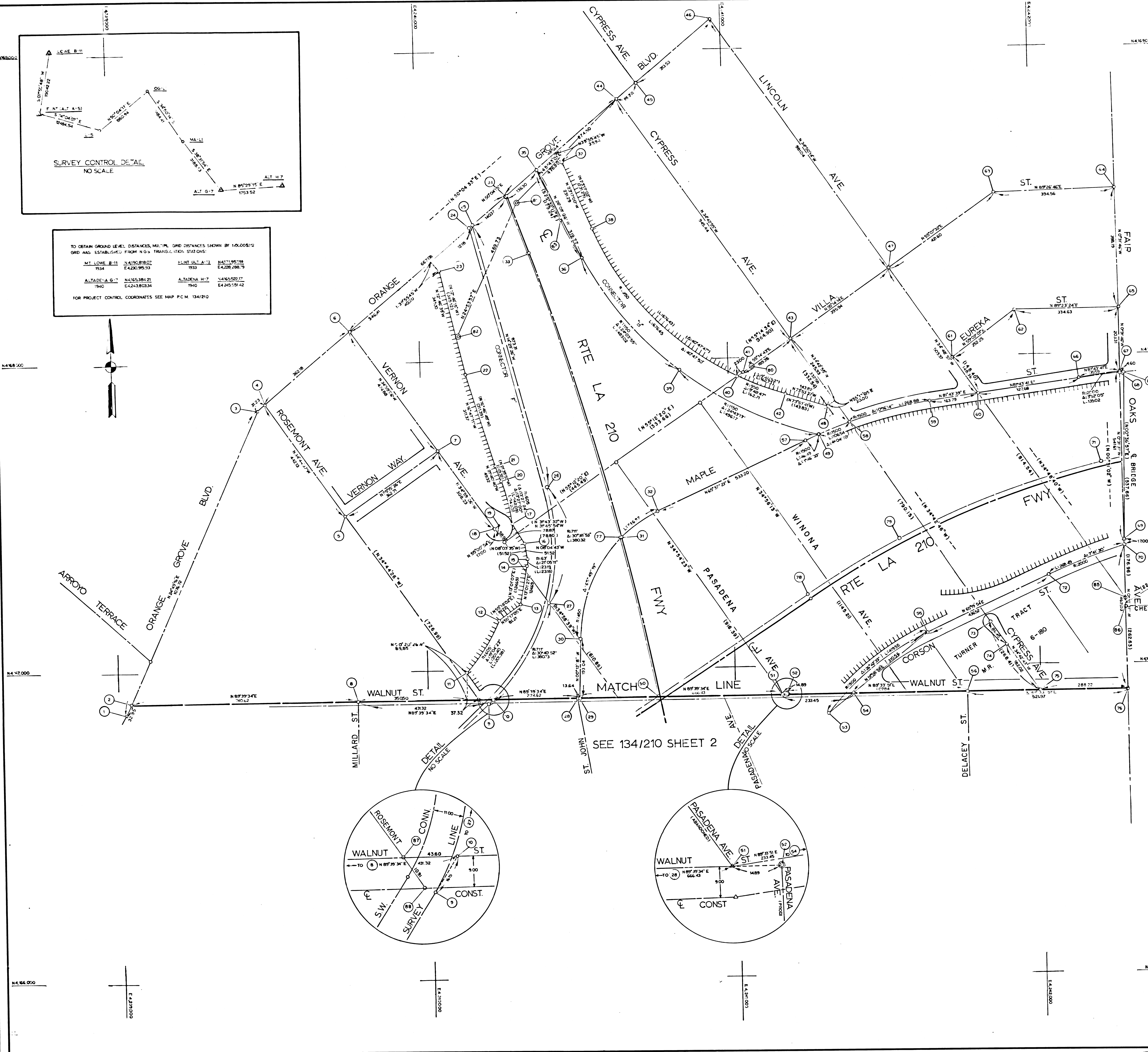
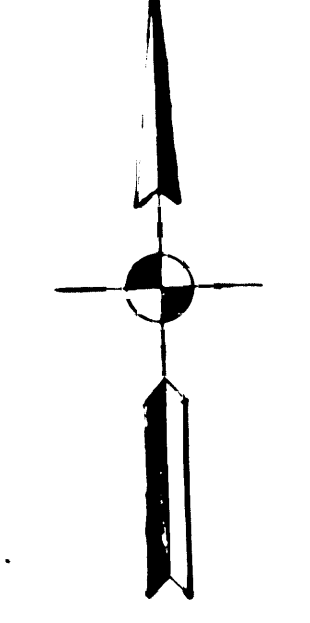


TO OBTAIN GROUND LEVEL DISTANCES, MULTIPLY GRID DISTANCES SHOWN BY 1.0000512
 GRID HAS ESTABLISHED FROM NGS TRANSFORMATION STATIONS:

MT. LOWE B-11	N 4130.818 02	E 4230.955 93	1934
ALTADEA G-7	N 4165.384 21	E 4243.803 34	1940
LAKE LA B-3	N 4171.957 38	E 4228.486 79	1933
ALTADEA M-7	N 4165.592 17	E 4245.151 42	1940

FOR PROJECT CONTROL COORDINATES SEE MAP P.C.M. 134/210



NO	NAME	DESCRIPTION	REFERENCE	REMARKS
1	00P-3	IND SPK & TIN	ALA 0072 0211	PASADENA CITY TIES 18 UZE
2	00P-4	IND SPK & TAG	ALA 0072 0213	PASADENA CITY 18 UZE
3	00P-5	IND SPK & TIN	ALA 0072 0213	PASADENA CITY 18 UZE
4	00P-6	IND SPK & TAG	ALA 0072 0213	PASADENA CITY 18 UZE
5	00P-7	IND SPK & TAG	ALA 0072 0213	PASADENA CITY 18 UZE
6	00P-8	IND SPK & TAG	ALA 0072 0213	PASADENA CITY 18 UZE
7	00P-9	IND SPK & TAG	ALA 0072 0213	PASADENA CITY 18 UZE
8	00P-10	IND SPK & TAG	ALA 0072 0213	PASADENA CITY 18 UZE
9	00P-11	IND SPK & TAG	ALA 0072 0213	PASADENA CITY 18 UZE
10	00P-12	IND SPK & TAG	ALA 0072 0213	PASADENA CITY 18 UZE
11	00P-13	IND SPK & TAG	ALA 0072 0213	PASADENA CITY 18 UZE
12	00P-14	IND SPK & TAG	ALA 0072 0213	PASADENA CITY 18 UZE
13	00P-15	IND SPK & TAG	ALA 0072 0213	PASADENA CITY 18 UZE
14	00P-16	IND SPK & TAG	ALA 0072 0213	PASADENA CITY 18 UZE
15	00P-17	IND SPK & TAG	ALA 0072 0213	PASADENA CITY 18 UZE
16	00P-18	IND SPK & TAG	ALA 0072 0213	PASADENA CITY 18 UZE
17	00P-19	IND SPK & TAG	ALA 0072 0213	PASADENA CITY 18 UZE
18	00P-20	IND SPK & TAG	ALA 0072 0213	PASADENA CITY 18 UZE
19	00P-21	IND SPK & TAG	ALA 0072 0213	PASADENA CITY 18 UZE
20	00P-22	IND SPK & TAG	ALA 0072 0213	PASADENA CITY 18 UZE
21	00P-23	IND SPK & TAG	ALA 0072 0213	PASADENA CITY 18 UZE
22	00P-24	IND SPK & TAG	ALA 0072 0213	PASADENA CITY 18 UZE
23	00P-25	IND SPK & TAG	ALA 0072 0213	PASADENA CITY 18 UZE
24	00P-26	IND SPK & TAG	ALA 0072 0213	PASADENA CITY 18 UZE
25	00P-27	IND SPK & TAG	ALA 0072 0213	PASADENA CITY 18 UZE
26	00P-28	IND SPK & TAG	ALA 0072 0213	PASADENA CITY 18 UZE
27	00P-29	IND SPK & TAG	ALA 0072 0213	PASADENA CITY 18 UZE
28	00P-30	IND SPK & TAG	ALA 0072 0213	PASADENA CITY 18 UZE
29	00P-31	IND SPK & TAG	ALA 0072 0213	PASADENA CITY 18 UZE
30	00P-32	IND SPK & TAG	ALA 0072 0213	PASADENA CITY 18 UZE
31	00P-33	IND SPK & TAG	ALA 0072 0213	PASADENA CITY 18 UZE
32	00P-34	IND SPK & TAG	ALA 0072 0213	PASADENA CITY 18 UZE
33	00P-35	IND SPK & TAG	ALA 0072 0213	PASADENA CITY 18 UZE
34	00P-36	IND SPK & TAG	ALA 0072 0213	PASADENA CITY 18 UZE
35	00P-37	IND SPK & TAG	ALA 0072 0213	PASADENA CITY 18 UZE
36	00P-38	IND SPK & TAG	ALA 0072 0213	PASADENA CITY 18 UZE
37	00P-39	IND SPK & TAG	ALA 0072 0213	PASADENA CITY 18 UZE
38	00P-40	IND SPK & TAG	ALA 0072 0213	PASADENA CITY 18 UZE
39	00P-41	IND SPK & TAG	ALA 0072 0213	PASADENA CITY 18 UZE
40	00P-42	IND SPK & TAG	ALA 0072 0213	PASADENA CITY 18 UZE
41	00P-43	IND SPK & TAG	ALA 0072 0213	PASADENA CITY 18 UZE
42	00P-44	IND SPK & TAG	ALA 0072 0213	PASADENA CITY 18 UZE
43	00P-45	IND SPK & TAG	ALA 0072 0213	PASADENA CITY 18 UZE
44	00P-46	IND SPK & TAG	ALA 0072 0213	PASADENA CITY 18 UZE
45	00P-47	IND SPK & TAG	ALA 0072 0213	PASADENA CITY 18 UZE
46	00P-48	IND SPK & TAG	ALA 0072 0213	PASADENA CITY 18 UZE
47	00P-49	IND SPK & TAG	ALA 0072 0213	PASADENA CITY 18 UZE
48	00P-50	IND SPK & TAG	ALA 0072 0213	PASADENA CITY 18 UZE
49	00P-51	IND SPK & TAG	ALA 0072 0213	PASADENA CITY 18 UZE
50	00P-52	IND SPK & TAG	ALA 0072 0213	PASADENA CITY 18 UZE
51	00P-53	IND SPK & TAG	ALA 0072 0213	PASADENA CITY 18 UZE
52	00P-54	IND SPK & TAG	ALA 0072 0213	PASADENA CITY 18 UZE
53	00P-55	IND SPK & TAG	ALA 0072 0213	PASADENA CITY 18 UZE
54	00P-56	IND SPK & TAG	ALA 0072 0213	PASADENA CITY 18 UZE
55	00P-57	IND SPK & TAG	ALA 0072 0213	PASADENA CITY 18 UZE
56	00P-58	IND SPK & TAG	ALA 0072 0213	PASADENA CITY 18 UZE
57	00P-59	IND SPK & TAG	ALA 0072 0213	PASADENA CITY 18 UZE
58	00P-60	IND SPK & TAG	ALA 0072 0213	PASADENA CITY 18 UZE
59	00P-61	IND SPK & TAG	ALA 0072 0213	PASADENA CITY 18 UZE
60	00P-62	IND SPK & TAG	ALA 0072 0213	PASADENA CITY 18 UZE
61	00P-63	IND SPK & TAG	ALA 0072 0213	PASADENA CITY 18 UZE
62	00P-64	IND SPK & TAG	ALA 0072 0213	PASADENA CITY 18 UZE
63	00P-65	IND SPK & TAG	ALA 0072 0213	PASADENA CITY 18 UZE
64	00P-66	IND SPK & TAG	ALA 0072 0213	PASADENA CITY 18 UZE
65	00P-67	IND SPK & TAG	ALA 0072 0213	PASADENA CITY 18 UZE
66	00P-68	IND SPK & TAG	ALA 0072 0213	PASADENA CITY 18 UZE
67	00P-69	IND SPK & TAG	ALA 0072 0213	PASADENA CITY 18 UZE
68	00P-70	IND SPK & TAG	ALA 0072 0213	PASADENA CITY 18 UZE
69	00P-71	IND SPK & TAG	ALA 0072 0213	PASADENA CITY 18 UZE
70	00P-72	IND SPK & TAG	ALA 0072 0213	PASADENA CITY 18 UZE
71	00P-73	IND SPK & TAG	ALA 0072 0213	PASADENA CITY 18 UZE
72	00P-74	IND SPK & TAG	ALA 0072 0213	PASADENA CITY 18 UZE
73	00P-75	IND SPK & TAG	ALA 0072 0213	PASADENA CITY 18 UZE
74	00P-76	IND SPK & TAG	ALA 0072 0213	PASADENA CITY 18 UZE
75	00P-77	IND SPK & TAG	ALA 0072 0213	PASADENA CITY 18 UZE
76	00P-78	IND SPK & TAG	ALA 0072 0213	PASADENA CITY 18 UZE
77	00P-79	IND SPK & TAG	ALA 0072 0213	PASADENA CITY 18 UZE
78	00P-80	IND SPK & TAG	ALA 0072 0213	PASADENA CITY 18 UZE
79	00P-81	IND SPK & TAG	ALA 0072 0213	PASADENA CITY 18 UZE
80	00P-82	IND SPK & TAG	ALA 0072 0213	PASADENA CITY 18 UZE
81	00P-83	IND SPK & TAG	ALA 0072 0213	PASADENA CITY 18 UZE
82	00P-84	IND SPK & TAG	ALA 0072 0213	PASADENA CITY 18 UZE
83	00P-85	IND SPK & TAG	ALA 0072 0213	PASADENA CITY 18 UZE
84	00P-86	IND SPK & TAG	ALA 0072 0213	PASADENA CITY 18 UZE
85	00P-87	IND SPK & TAG	ALA 0072 0213	PASADENA CITY 18 UZE
86	00P-88	IND SPK & TAG	ALA 0072 0213	PASADENA CITY 18 UZE
87	00P-89	IND SPK & TAG	ALA 0072 0213	PASADENA CITY 18 UZE
88	00P-90	IND SPK & TAG	ALA 0072 0213	PASADENA CITY 18 UZE

LEGEND
 (C) SURVEY CONTROL POINTS
 (O) MONUMENTS SET OR FOUND, ALSO B.C.'S AND E.C.'S
 (X) ANGLE POINTS
 (S) SECTION CORNERS, RANCHO CORNERS
 (M) MEASURED GROUND DISTANCE
 (V) VALUE ESTABLISHED BY DISTRICT OFFICE OF RIGHT OF WAY BRANCH
 (C) CALCULATED VALUE
 (R) RECORDED VALUE AS ESTABLISHED PREVIOUSLY

NOTE:
 1. BEARINGS ARE BASED ON THE CALIFORNIA COORDINATE SYSTEM, DIVISION 8, SECTION 8B09 OF THE 1953 PUBLIC RESOURCES CODE.
 2. DEPARTMENT OF TRANSPORTATION SURVEY INFORMATION IS AVAILABLE FROM THE SURVEY SECTION OF THE ENGINEERING SERVICES BRANCH, LOS ANGELES, CALIFORNIA.
 3. DEPARTMENT OF TRANSPORTATION RIGHT OF WAY INFORMATION IS AVAILABLE FROM THE RIGHT OF WAY BRANCH, LOS ANGELES, CALIFORNIA.
 4. STATIONING SHOWN ON THIS MAP IS FOR REFERENCE ONLY.

IN LOS ANGELES COUNTY
 BLK. 1823 MOD. 88, 89, 78, 89
 606, 62, 72, 73, 74, 80, 81, 82, 90, 91
 IN PASADENA ON ROUTE 210 FROM ORANGE GROVE BLVD TO FAIR OAKS AVE
 ON ROUTE 134 FROM ORANGE GROVE BLVD TO ROUTE 210
 AND ON ROUTE 7 FROM COLORADO BLVD TO ROUTE 210

CONSTRUCTION CONTRACT NO. 07-15014 COMPLETION DATE: FEB 24, 1975
 SCALE: 1"=100'
 100 200 300 400 500 FEET

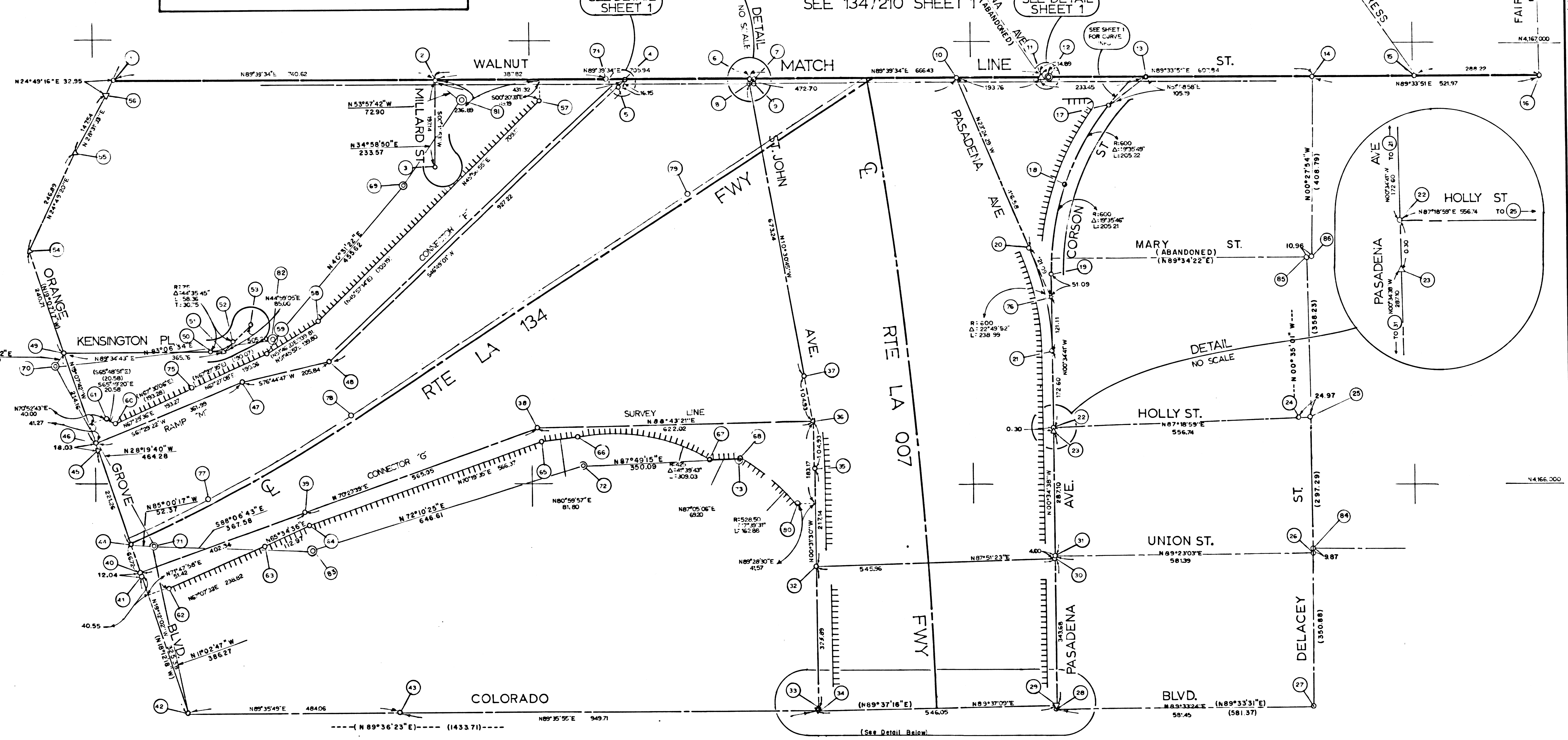
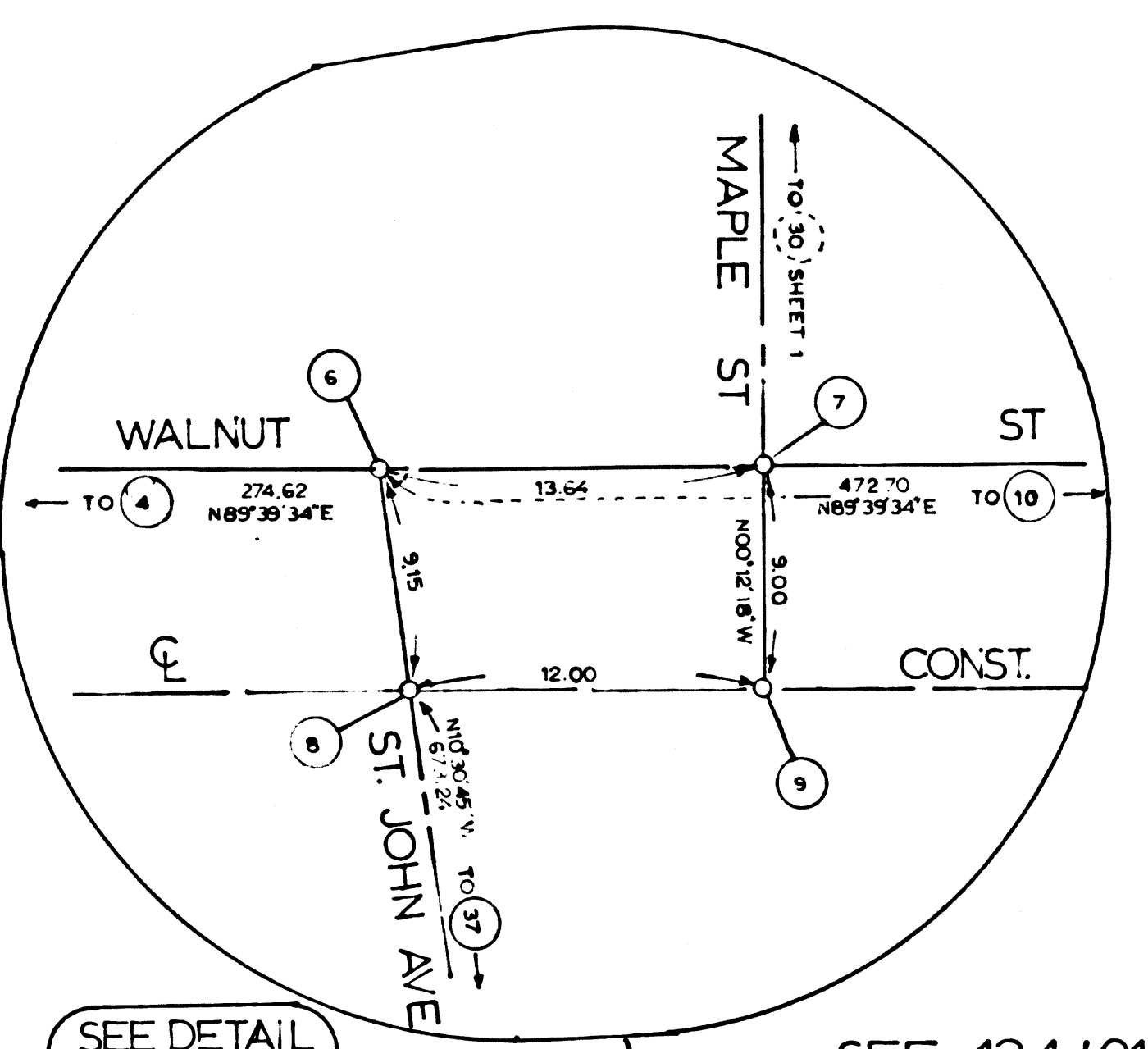
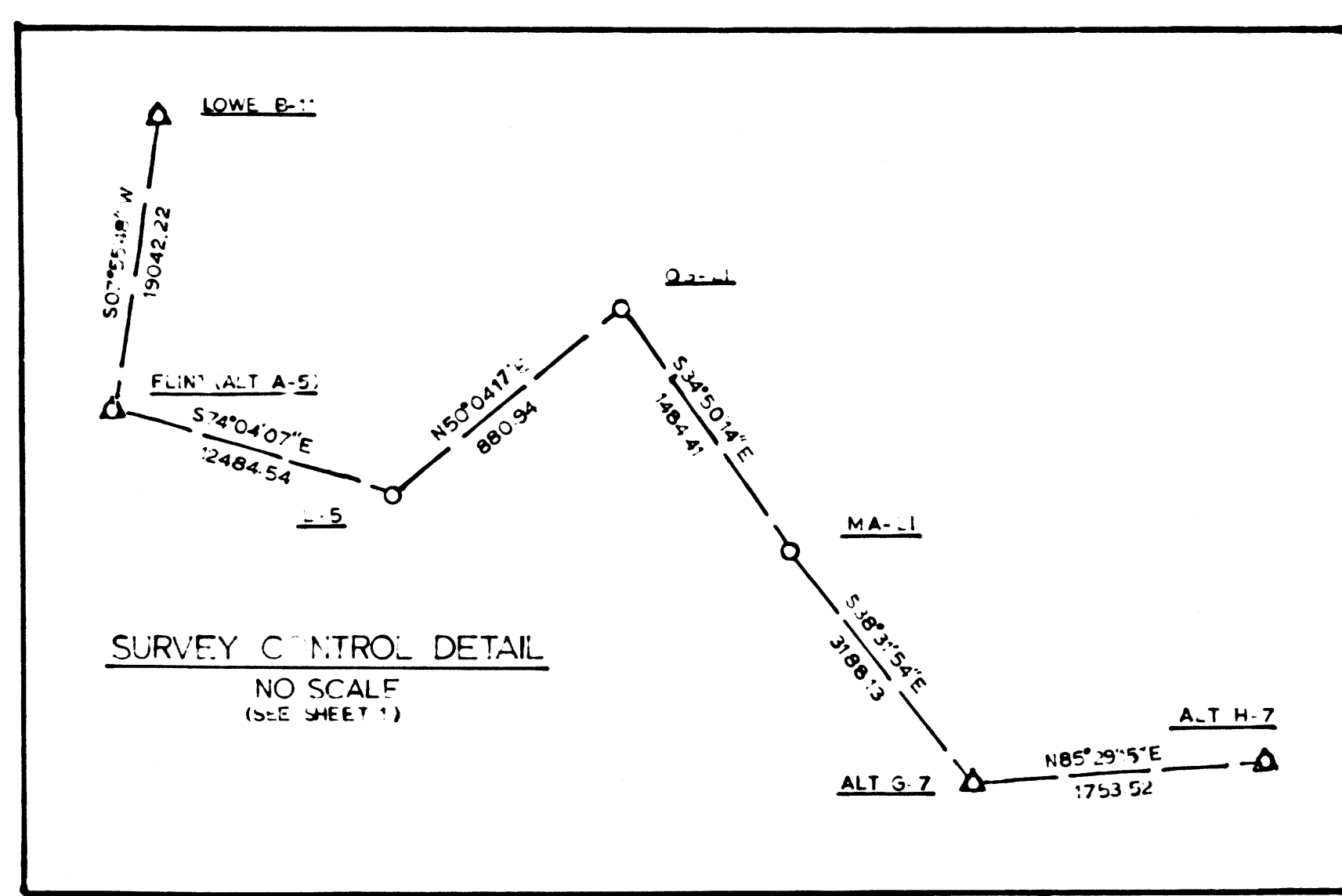
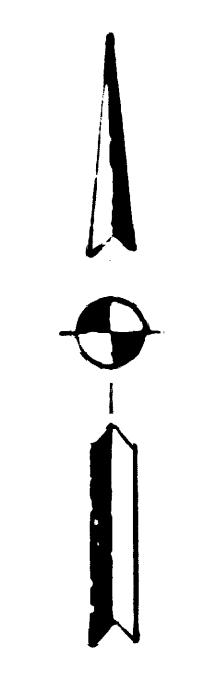
LOS ANGELES COUNTY FILE NO.

STATE OF CALIFORNIA - DEPARTMENT OF TRANSPORTATION - SURVEYS	
DISTRICT COUNTY	ROUTE POST MILES - TOTAL PROJECT
07 LA	134/210 134.210 134.210
DATE	DATE
7/21/77	7/21/77

MONUMENTATION MAP
 MAP NO. 134/210/007 (1)
 Initial Survey Requested: 7/21/77
 Completion Date: 7/21/77

Checked by: J. KRASZEWSKI
 Project Engineer: J. KRASZEWSKI
 Date: 7-21-77

F.M. 211727-1



NO	NAME	DESCRIPTION	REFERENCE	REMARKS
1	00-14	FD 'C' NAIL	ALA 007-J-001	
2	00-15	FD 'C' NAIL	ALA 007-J-002	
3	00-16	SET BT SPK & W	SR 76-002-003	
4	00-17	SET L & T	SR 76-002-004	71100 RT
5	00-18	SET L & T	SR 76-002-005	X1100 RT 5/L
6	00-19	SET L & T	SR 76-002-006	
7	00-20	SET L & T	SR 76-002-007	
8	00-21	SET L & T	SR 76-002-008	CHET LINE WALNUT
9	00-22	SET L & T	SR 76-002-009	CHET LINE WALNUT
10	00-23	SET L & T	SR 76-002-010	
11	00-24	SET L & T	SR 76-002-011	
12	00-25	SET SHURSET NAIL	SR 76-002-012	CH. RD.
13	00-26	SET L & T	SR 76-002-013	
14	00-27	SET L & T	SR 76-002-014	
15	00-28	SET L & T	SR 76-002-015	
16	00-29	SET SHURSET NAIL	SR 76-002-016	PCD
17	00-30	SET SHURSET NAIL	SR 76-002-017	PCD
18	00-31	SET SHURSET NAIL	SR 76-002-018	PCD
19	00-32	SET SHURSET NAIL	SR 76-002-019	PCD
20	00-33	SET SHURSET NAIL	SR 76-002-020	PCD
21	00-34	SET SHURSET NAIL	SR 76-002-021	PCD
22	00-35	SET SHURSET NAIL	SR 76-002-022	PCD
23	00-36	SET SHURSET NAIL	SR 76-002-023	PCD
24	00-37	SET SHURSET NAIL	SR 76-002-024	PCD
25	00-38	SET SHURSET NAIL	SR 76-002-025	PCD
26	00-39	SET SHURSET NAIL	SR 76-002-026	PCD
27	00-40	SET SHURSET NAIL	SR 76-002-027	PCD
28	00-41	SET SHURSET NAIL	SR 76-002-028	PCD
29	00-42	SET SHURSET NAIL	SR 76-002-029	PCD
30	00-43	SET SHURSET NAIL	SR 76-002-030	PCD
31	00-44	SET SHURSET NAIL	SR 76-002-031	PCD
32	00-45	SET SHURSET NAIL	SR 76-002-032	PCD
33	00-46	SET SHURSET NAIL	SR 76-002-033	PCD
34	00-47	SET SHURSET NAIL	SR 76-002-034	PCD
35	00-48	SET SHURSET NAIL	SR 76-002-035	PCD
36	00-49	SET SHURSET NAIL	SR 76-002-036	PCD
37	00-50	SET SHURSET NAIL	SR 76-002-037	PCD
38	00-51	SET SHURSET NAIL	SR 76-002-038	PCD
39	00-52	SET SHURSET NAIL	SR 76-002-039	PCD
40	00-53	SET SHURSET NAIL	SR 76-002-040	PCD
41	00-54	SET SHURSET NAIL	SR 76-002-041	PCD
42	00-55	SET SHURSET NAIL	SR 76-002-042	PCD
43	00-56	SET SHURSET NAIL	SR 76-002-043	PCD
44	00-57	SET SHURSET NAIL	SR 76-002-044	PCD
45	00-58	SET SHURSET NAIL	SR 76-002-045	PCD
46	00-59	SET SHURSET NAIL	SR 76-002-046	PCD
47	00-60	SET SHURSET NAIL	SR 76-002-047	PCD
48	00-61	SET SHURSET NAIL	SR 76-002-048	PCD
49	00-62	SET SHURSET NAIL	SR 76-002-049	PCD
50	00-63	SET SHURSET NAIL	SR 76-002-050	PCD
51	00-64	SET SHURSET NAIL	SR 76-002-051	PCD
52	00-65	SET SHURSET NAIL	SR 76-002-052	PCD
53	00-66	SET SHURSET NAIL	SR 76-002-053	PCD
54	00-67	SET SHURSET NAIL	SR 76-002-054	PCD
55	00-68	SET SHURSET NAIL	SR 76-002-055	PCD
56	00-69	SET SHURSET NAIL	SR 76-002-056	PCD
57	00-70	SET SHURSET NAIL	SR 76-002-057	PCD
58	00-71	SET SHURSET NAIL	SR 76-002-058	PCD
59	00-72	SET SHURSET NAIL	SR 76-002-059	PCD
60	00-73	SET SHURSET NAIL	SR 76-002-060	PCD
61	00-74	SET SHURSET NAIL	SR 76-002-061	PCD
62	00-75	SET SHURSET NAIL	SR 76-002-062	PCD
63	00-76	SET SHURSET NAIL	SR 76-002-063	PCD
64	00-77	SET SHURSET NAIL	SR 76-002-064	PCD
65	00-78	SET SHURSET NAIL	SR 76-002-065	PCD
66	00-79	SET SHURSET NAIL	SR 76-002-066	PCD
67	00-80	SET SHURSET NAIL	SR 76-002-067	PCD
68	00-81	SET SHURSET NAIL	SR 76-002-068	PCD
69	00-82	SET SHURSET NAIL	SR 76-002-069	PCD
70	00-83	SET SHURSET NAIL	SR 76-002-070	PCD
71	00-84	SET SHURSET NAIL	SR 76-002-071	PCD
72	00-85	SET SHURSET NAIL	SR 76-002-072	PCD
73	00-86	SET SHURSET NAIL	SR 76-002-073	PCD
74	00-87	SET SHURSET NAIL	SR 76-002-074	PCD
75	00-88	SET SHURSET NAIL	SR 76-002-075	PCD
76	00-89	SET SHURSET NAIL	SR 76-002-076	PCD
77	00-90	SET SHURSET NAIL	SR 76-002-077	PCD
78	00-91	SET SHURSET NAIL	SR 76-002-078	PCD
79	00-92	SET SHURSET NAIL	SR 76-002-079	PCD
80	00-93	SET SHURSET NAIL	SR 76-002-080	PCD
81	00-94	SET SHURSET NAIL	SR 76-002-081	PCD
82	00-95	SET SHURSET NAIL	SR 76-002-082	PCD
83	00-96	SET SHURSET NAIL	SR 76-002-083	PCD
84	00-97	SET SHURSET NAIL	SR 76-002-084	PCD
85	00-98	SET SHURSET NAIL	SR 76-002-085	PCD
86	00-99	SET SHURSET NAIL	SR 76-002-086	PCD
87	00-100	SET SHURSET NAIL	SR 76-002-087	PCD
88	00-101	SET SHURSET NAIL	SR 76-002-088	PCD
89	00-102	SET SHURSET NAIL	SR 76-002-089	PCD
90	00-103	SET SHURSET NAIL	SR 76-002-090	PCD
91	00-104	SET SHURSET NAIL	SR 76-002-091	PCD
92	00-105	SET SHURSET NAIL	SR 76-002-092	PCD
93	00-106	SET SHURSET NAIL	SR 76-002-093	PCD
94	00-107	SET SHURSET NAIL	SR 76-002-094	PCD
95	00-108	SET SHURSET NAIL	SR 76-002-095	PCD
96	00-109	SET SHURSET NAIL	SR 76-002-096	PCD
97	00-110	SET SHURSET NAIL	SR 76-002-097	PCD
98	00-111	SET SHURSET NAIL	SR 76-002-098	PCD
99	00-112	SET SHURSET NAIL	SR 76-002-099	PCD
100	00-113	SET SHURSET NAIL	SR 76-002-100	PCD

LEGEND

- SURVEY CONTROL POINTS
- MONUMENTS SET OR FOUND, ALSO B'S AND E'S
- ANGLE POINTS
- SECTION CORNERS, RANCHO CORNERS
- MEASURED GROUND DISTANCE
- () VALUE ESTABLISHED BY DISTRICT OF RIGHT OF WAY BRANCH
- CALCULATED VALUE
- RECORDED VALUE AS ESTABLISHED PREVIOUSLY

NOTE

- BEARINGS ARE BASED ON THE CALIFORNIA COORDINATE SYSTEM, DIVISION 8, SECTION 8809 OF THE 1983 PUBLIC RESOURCES CODE.
- DEPARTMENT OF TRANSPORTATION SURVEY INFORMATION IS AVAILABLE FROM THE SURVEY SECTION OF THE ENGINEERING SERVICES BRANCH, LOS ANGELES, CALIFORNIA.
- DEPARTMENT OF TRANSPORTATION RIGHT OF WAY INFORMATION IS AVAILABLE FROM THE RIGHT OF WAY BRANCH, LOS ANGELES, CALIFORNIA.
- STATIONING SHOWN ON THIS MAP IS FOR REFERENCE ONLY.

IN LOS ANGELES COUNTY

BLK. 1623 MOD. 59,68,69
BLK. 1624 MOD. 50,51,50,51,70,71

IN PASADENA ON ROUTE 210 FROM ORANGE GROVE BLVD TO FAIR OAKS AVE.
ON ROUTE 134 FROM ORANGE GROVE BLVD TO ROUTE 210,
AND ON ROUTE 7 FROM COLORADO BLVD TO ROUTE 210

CONSTRUCTION CONTRACT NO. 07-155014 COMPLETION DATE: FEB. 24, 1975

SCALE: 1" = 100'
100 200 300 400 500 FEET

LOS ANGELES COUNTY FILE NO.

STATE OF CALIFORNIA - DEPARTMENT OF TRANSPORTATION - SURVEYS

PROJECT: ROUTE 134 FROM ORANGE GROVE BLVD TO ROUTE 210, PASADENA, CALIFORNIA

MONUMENTATION MAP

MAP NO. 134/210/007(2)

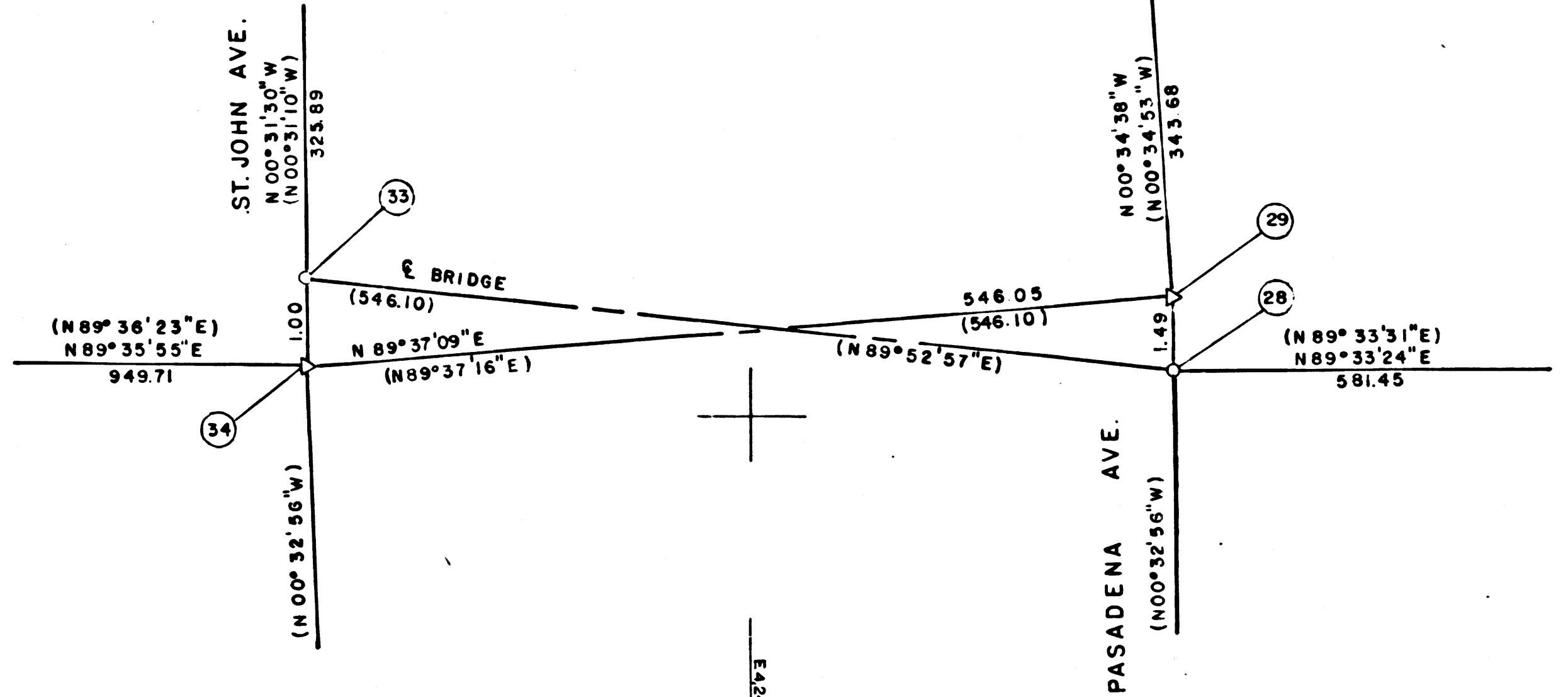
Project Engineer: J. KRASZEWski
Checked by: J. KRASZEWski

Project Engineer: J. KRASZEWski
Checked by: J. KRASZEWski

Initial Survey Request: _____ Completion Date: _____

CALIFORNIA COORDINATE SYSTEM - ZONE 7

DATE: 7-22-77



F.M. 21727-2