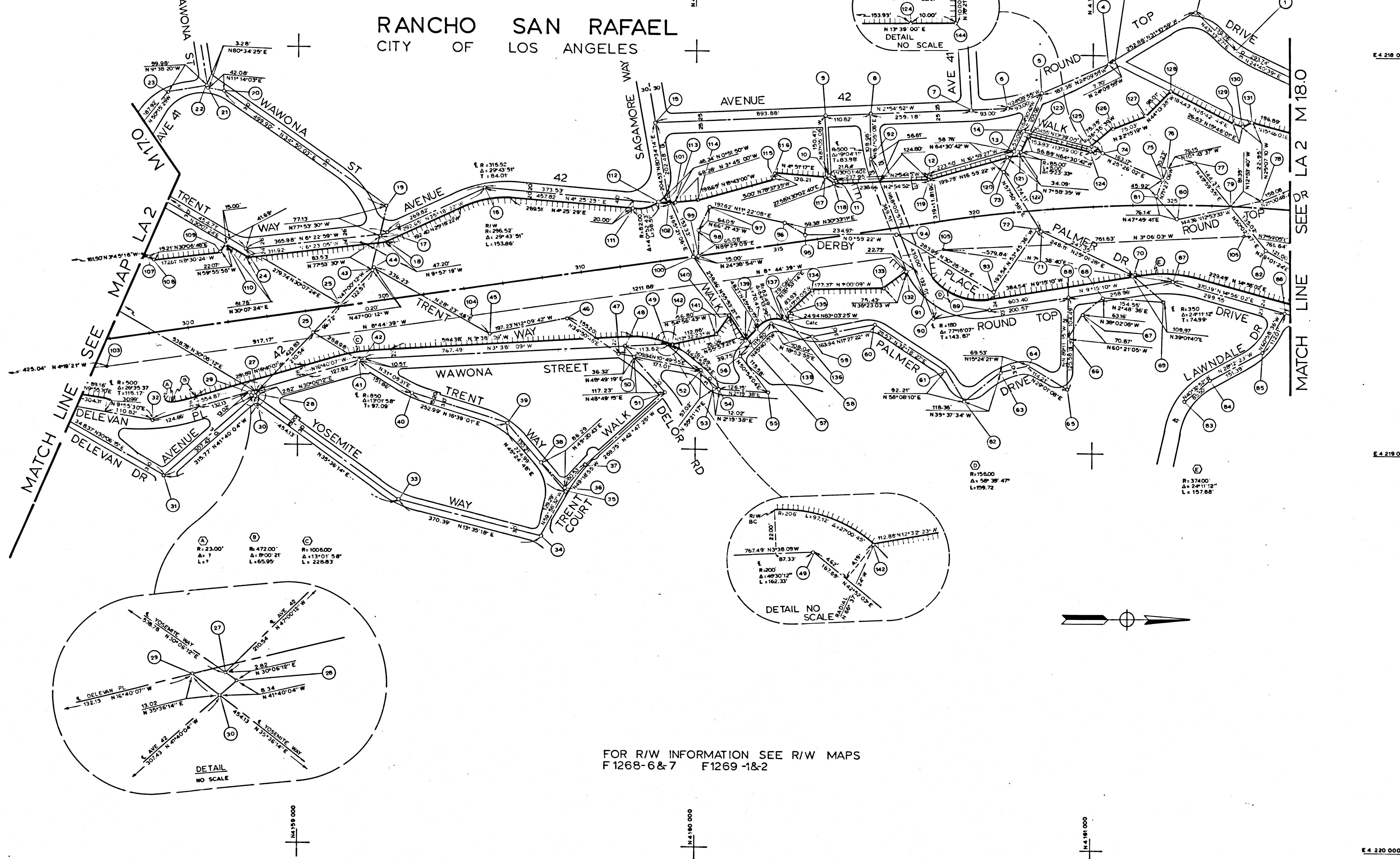


NO	NAME	DESCRIPTION	REFERENCE	COORDINATES	NO	NAME	DESCRIPTION	REFERENCE	COORDINATES	NO	NAME	DESCRIPTION	REFERENCE	COORDINATES
83	SET 2 IP	SET 2 IP	SR 76 200 12,13	N 4,161,234.99 E 4,219,958.53	83	SET S&T	SET S&T	TR N 23950	N 4,160,137.83 E 4,218,737.28	1	SET CHIS X	SET CHIS X	SR 76 043 18	N 4,161,361.91 E 4,217,987.90
84	NOTHING SET	NOTHING SET	SR 76 200 13	N 4,161,330.96 E 4,218,813.05	84	---	---	---	N 4,160,191.04 E 4,218,862.80	2	SET NAIL	SET NAIL	SR 76 043 15	N 4,161,160.07 E 4,217,982.18
85	SET 2 IP	SET 2 IP	---	---	85	FD S&T	FD S&T	SR 76 043 18	N 4,161,433.37 E 4,218,741.50	3	FD SPK	FD SPK	---	N 4,161,050.75 E 4,218,019.78
86	NOTHING SET	NOTHING SET	SR 76 200 14	N 4,161,487.71 E 4,218,643.56	86	SET SPK	SET SPK	---	N 4,160,532.76 E 4,218,969.23	4	FD L&T	FD L&T	---	N 4,161,043.73 E 4,218,023.13
87	SET 2 IP	SET 2 IP	SR 76 200 14,15	N 4,161,588.28 E 4,218,586.35	87	SET 4 PMS ON MH RIM	SET 4 PMS ON MH RIM	---	N 4,160,827.80 E 4,218,786.29	5	FD CHIS X	FD CHIS X	---	N 4,160,722.79 E 4,218,029.83
88	NOTHING SET	NOTHING SET	SR 76 200 15	N 4,160,842.69 E 4,218,608.00	88	SET SPK	SET SPK	SR 76 043 19	N 4,160,881.40 E 4,218,916.60	6	FD SPK	FD SPK	SR 76 043 13	N 4,160,787.94 E 4,218,137.90
89	SET 2 IP	SET 2 IP	---	---	89	---	---	---	N 4,160,772.58 E 4,218,801.11	7	NOTHING FD	NOTHING FD	ALA 002F 9	N 4,160,899.08 E 4,218,142.63
90	NOTHING SET	NOTHING SET	SR 76 200 35	N 4,160,402.73 E 4,218,653.38	90	NOTHING SET	NOTHING SET	---	N 4,160,339.59 E 4,218,782.64	8	FD 4 PMS ON MH RIM	FD 4 PMS ON MH RIM	SR 76 043 20	N 4,160,436.22 E 4,218,155.81
91	SET 2 IP	SET 2 IP	SR 76 200 34,35	N 4,160,380.09 E 4,218,607.29	91	SET L&T	SET L&T	---	N 4,160,939.47 E 4,218,838.05	9	SET 4 PMS ON MH RIM	SET 4 PMS ON MH RIM	SR 76 043 13	N 4,160,325.54 E 4,218,161.44
92	NOTHING SET	NOTHING SET	SR 76 200 34	N 4,160,441.76 E 4,218,264.85	92	SET S&W	SET S&W	SR 76 043 20	N 4,160,841.22 E 4,218,712.48	10	SET NAIL	SET NAIL	SR 76 043 14	N 4,160,333.19 E 4,218,311.85
93	SET CHIS X	SET CHIS X	---	---	93	2X2 DESTROYED	2X2 DESTROYED	CEFB12931 31	N 4,160,755.73 E 4,218,651.13	11	---	---	---	N 4,160,352.10 E 4,218,322.51
94	NOTHING SET	NOTHING SET	---	---	94	SPK DESTROYED	SPK DESTROYED	CEFB12931 32	N 4,160,510.89 E 4,218,457.54	12	---	---	---	N 4,160,389.74 E 4,218,310.52
95	SET 1 1/2 IP	SET 1 1/2 IP	---	---	95	---	---	---	N 4,161,026.03 E 4,218,611.97	13	---	---	---	N 4,160,303.48 E 4,218,245.21
96	NOTHING SET	NOTHING SET	SR 76 200 33	N 4,160,224.81 E 4,218,431.41	96	---	---	---	N 4,161,180.39 E 4,218,619.55	14	SET CHIS X	SET CHIS X	---	N 4,160,303.48 E 4,218,245.21
97	2X2 DESTROYED	2X2 DESTROYED	CEFB12931 33	N 4,160,031.07 E 4,218,392.46	97	---	---	---	N 4,161,094.96 E 4,218,550.37	15	FD L&T	FD L&T	SR 76 043 13	N 4,160,827.19 E 4,218,195.48
98	L&T DESTROYED	L&T DESTROYED	---	---	98	---	---	---	N 4,160,870.84 E 4,218,445.67	16	FD 4 PMS ON MH RIM	FD 4 PMS ON MH RIM	---	N 4,159,892.23 E 4,218,183.35
99	---	---	---	---	99	---	---	---	N 4,160,870.14 E 4,218,445.67	17	FD SPK	FD SPK	SR 76 043 9	N 4,159,472.26 E 4,218,349.75
100	PMS ON MH RIM DESTROYED	PMS ON MH RIM DESTROYED	---	---	100	---	---	---	N 4,160,005.97 E 4,218,216.20	18	SET CHIS X	SET CHIS X	---	N 4,159,228.35 E 4,218,450.13
101	SPK DESTROYED	SPK DESTROYED	CEFB12931 20	N 4,159,928.40 E 4,218,383.09	101	---	---	---	N 4,159,928.40 E 4,218,383.09	19	NOTHING FD NOTHING SET	NOTHING FD NOTHING SET	CCM 115.2	N 4,159,207.71 E 4,218,474.88
102	L&T DESTROYED	L&T DESTROYED	---	---	102	---	---	---	N 4,161,173.31 E 4,218,313.42	20	---	---	---	N 4,158,772.29 E 4,218,105.74
103	SET L&T	SET L&T	SR 76 199 7	N 4,160,919.24 E 4,218,812.30	103	---	---	---	N 4,161,026.03 E 4,218,611.97	21	---	---	---	N 4,158,772.29 E 4,218,105.74
104	---	---	---	---	104	---	---	---	N 4,161,425.80 E 4,218,073.46	22	---	---	---	N 4,158,772.29 E 4,218,105.74
105	---	---	---	---	105	---	---	---	N 4,160,823.58 E 4,218,489.23	23	---	---	---	N 4,158,772.29 E 4,218,105.74
106	---	---	---	---	106	---	---	---	N 4,160,823.58 E 4,218,489.23	24	---	---	---	N 4,158,772.29 E 4,218,105.74
107	SET 2 IP	SET 2 IP	SR 76 200 10,11	N 4,160,823.58 E 4,218,489.23	107	---	---	---	N 4,161,208.82 E 4,218,397.36	25	FD L&T DESTROYED	FD L&T DESTROYED	CEFB12934 32	N 4,159,106.60 E 4,218,645.21
111	FD CHIS X	FD CHIS X	SR 76 200 12	N 4,160,823.58 E 4,218,489.23	111	---	---	---	N 4,161,150.70 E 4,218,397.36	26	---	---	---	N 4,159,046.84 E 4,218,716.95



27	---	---	---	N 4,158,997.06 E 4,218,870.94	27	---	---	---	N 4,161,094.96 E 4,218,550.37	15	FD 4 PMS ON MH RIM	FD 4 PMS ON MH RIM	---	N 4,159,892.23 E 4,218,183.35
28	---	---	---	N 4,158,997.06 E 4,218,870.94	28	---	---	---	N 4,160,870.84 E 4,218,445.67	16	FD SPK	FD SPK	SR 76 043 9	N 4,159,472.26 E 4,218,349.75
29	SET SPK	SET SPK	SR 76 043 26	N 4,158,892.23 E 4,218,870.94	29	---	---	---	N 4,160,870.14 E 4,218,445.67	17	SET CHIS X	SET CHIS X	---	N 4,159,228.35 E 4,218,450.13
30	SET 4 PMS ON MH RIM	SET 4 PMS ON MH RIM	---	N 4,158,892.23 E 4,218,870.94	30	---	---	---	N 4,160,778.19 E 4,218,286.27	18	SET L&T	SET L&T	---	N 4,158,207.71 E 4,218,474.88
31	---	---	---	N 4,158,892.23 E 4,218,870.94	31	---	---	---	N 4,160,778.19 E 4,218,286.27	19	NOTHING FD NOTHING SET	NOTHING FD NOTHING SET	CCM 115.2	N 4,159,207.71 E 4,218,474.88
32	SET SPK	SET SPK	SR 76 043 25	N 4,158,892.23 E 4,218,870.94	32	---	---	---	N 4,160,778.19 E 4,218,286.27	20	---	---	---	N 4,158,772.29 E 4,218,105.74
33	FD L&T	FD L&T	SR 76 043 25	N 4,158,892.23 E 4,218,870.94	33	---	---	---	N 4,161,026.03 E 4,218,611.97	21	---	---	---	N 4,158,772.29 E 4,218,105.74
34	2X2	2X2	CEFB12934 19	N 4,158,892.23 E 4,218,870.94	34	---	---	---	N 4,161,180.39 E 4,218,619.55	22	---	---	---	N 4,158,772.29 E 4,218,105.74
35	NOTHING FD NOTHING SET	NOTHING FD NOTHING SET	---	N 4,158,892.23 E 4,218,870.94	35	---	---	---	N 4,161,425.80 E 4,218,073.46	23	---	---	---	N 4,158,772.29 E 4,218,105.74
36	FD L&T	FD L&T	A115 001 5	N 4,158,892.23 E 4,218,870.94	36	---	---	---	N 4,160,823.58 E 4,218,489.23	24	---	---	---	N 4,158,772.29 E 4,218,105.74
37	SET 2X2	SET 2X2	CEFB12934 19	N 4,158,892.23 E 4,218,870.94	37	---	---	---	N 4,160,823.58 E 4,218,489.23	25	---	---	---	N 4,158,772.29 E 4,218,105.74
38	FD L&T	FD L&T	---	N 4,158,892.23 E 4,218,870.94	38	---	---	---	N 4,161,173.31 E 4,218,313.42	26	---	---	---	N 4,158,772.29 E 4,218,105.74
39	---	---	---	N 4,158,892.23 E 4,218,870.94	39	---	---	---	N 4,161,173.31 E 4,218,313.42	27	---	---	---	N 4,158,772.29 E 4,218,105.74
40	---	---	---	N 4,158,892.23 E 4,218,870.94	40	---	---	---	N 4,161,173.31 E 4,218,313.42	28	---	---	---	N 4,158,772.29 E 4,218,105.74
41	SET CONC N	SET CONC N	SR 76 043 27	N 4,158,892.23 E 4,218,870.94	41	---	---	---	N 4,161,173.31 E 4,218,313.42	29	---	---	---	N 4,158,772.29 E 4,218,105.74
42	SET SPK	SET SPK	---	N 4,158,892.23 E 4,218,870.94	42	---	---	---	N 4,161,173.31 E 4,218,313.42	30	---	---	---	N 4,158,772.29 E 4,218,105.74
43	FD 4 PMS ON MH RIM DESTROYED	FD 4 PMS ON MH RIM DESTROYED	A 115 001 4	N 4,158,892.23 E 4,218,870.94	43	---	---	---	N 4,161,173.31 E 4,218,313.42	31	---	---	---	N 4,158,772.29 E 4,218,105.74
44	NOTHING FD	NOTHING FD	CCM 115.2	N 4,158,892.23 E 4,218,870.94	44	---	---	---	N 4,161,173.31 E 4,218,313.42	32	---	---	---	N 4,158,772.29 E 4,218,105.74
45	FD 2X2 DESTROYED	FD 2X2 DESTROYED	---	N 4,158,892.23 E 4,218,870.94	45	---	---	---	N 4,161,173.31 E 4,218,313.42	33	---	---	---	N 4,158,772.29 E 4,218,105.74
46	FD L&T DESTROYED	FD L&T DESTROYED	A 115 001 5	N 4,158,892.23 E 4,218,870.94	46	---	---	---	N 4,161,173.31 E 4,218,313.42	34	---	---	---	N 4,158,772.29 E 4,218,105.74
47	FD ST&W DESTROYED	FD ST&W DESTROYED	---	N 4,158,892.23 E 4,218,870.94	47	---	---	---	N 4,161,173.31 E 4,218,313.42	35	---	---	---	N 4,158,772.29 E 4,218,105.74
48	SET SPK	SET SPK	SR 76 043 28	N 4,158,892.23 E 4,218,870.94	48	---	---	---	N 4,161,173.31 E 4,218,313.42	36	---	---	---	N 4,158,772.29 E 4,218,105.74
49	SET L&T	SET L&T	---	N 4,158,892.23 E 4,218,870.94	49	---	---	---	N 4,161,173.31 E 4,218,313.42	37	---	---	---	N 4,158,772.29 E 4,218,105.74
50	FD STD SURV MON DESTROYED	FD STD SURV MON DESTROYED	A 115 001 5	N 4,158,892.23 E 4,218,870.94	50	---	---	---	N 4,161,173.31 E 4,218,313.42	38	---	---	---	N 4,158,772.29 E 4,218,105.74
51	FD ST&W	FD ST&W	---	N 4,158,892.23 E 4,218,870.94	51	---	---	---	N 4,161,173.31 E 4,218,313.42	39	---	---	---	N 4,158,772.29 E 4,218,105.74
52	FD STD SURV MON DESTROYED	FD STD SURV MON DESTROYED	A 115 001 10	N 4,158,892.23 E 4,218,870.94	52	---	---	---	N 4,161,173.31 E 4,218,313.42	40	---	---	---	N 4,158,772.29 E 4,218,105.74
53	FD L&T	FD L&T	SR 76 043 29	N 4,158,892.23 E 4,218,870.94	53	---	---	---	N 4,161,173.31 E 4,218,313.42	41	---	---	---	N 4,158,772.29 E 4,218,105.74
54	FD CONC N	FD CONC N	---	N 4,158,892.23 E 4,218,870.94	54	---	---	---	N 4,161,173.31 E 4,218,313.42	42	---	---	---	N 4,158,772.29 E 4,218,105.74
55	FD S&W	FD S&W	---	N 4,158,892.23 E 4,218,870.94	55	---	---	---	N 4,161,173.31 E 4,218,313.42	43	---	---	---	N 4,158,772.29 E 4,218,105.74
56	FD STD SURV MON	FD STD SURV MON	A115 001 10	N 4,158,892.23 E 4,218,870.94	56	---	---	---	N 4,161,173.31 E 4,218,313.42	44	---	---	---	N 4,158,772.29 E 4,218,105.74

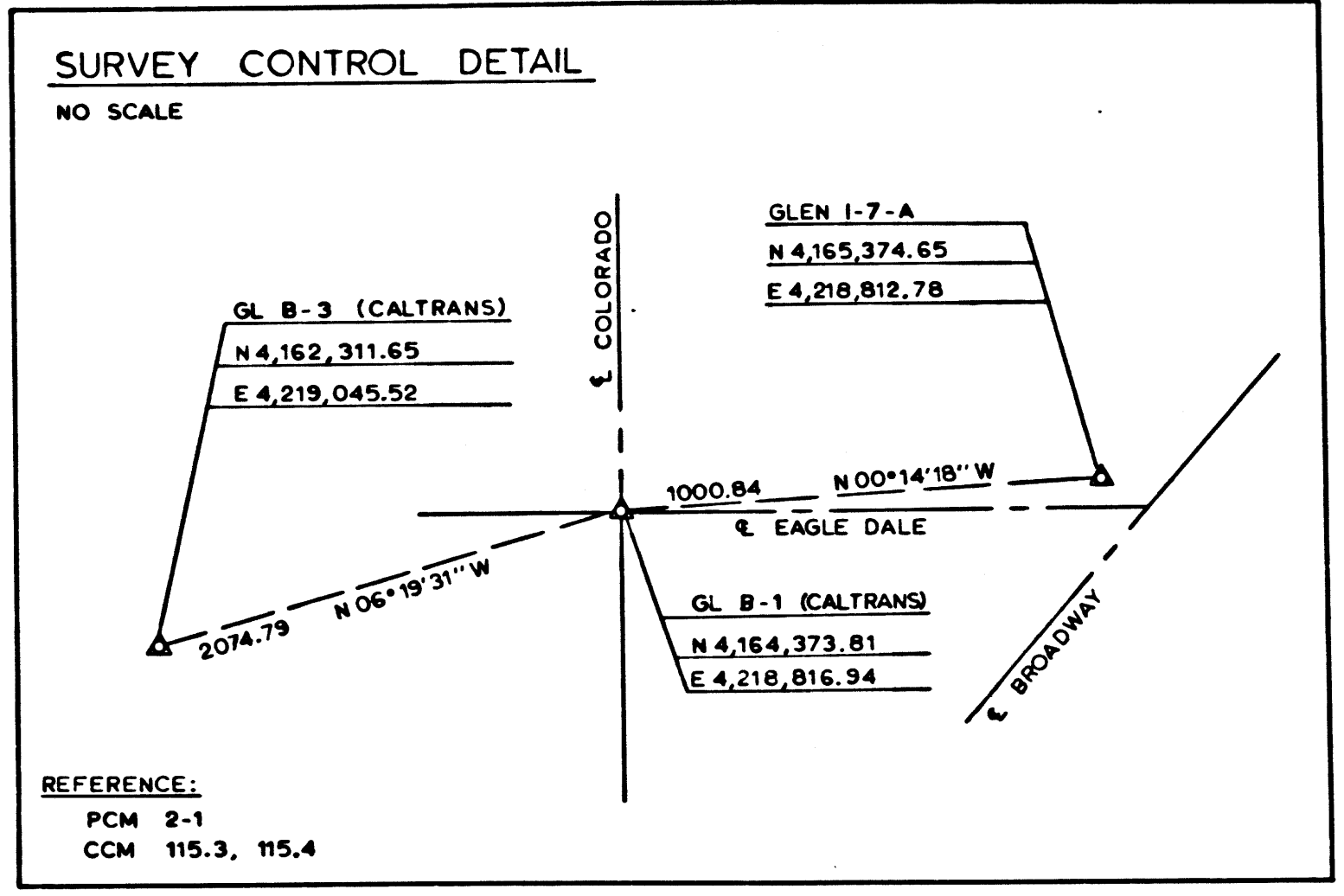
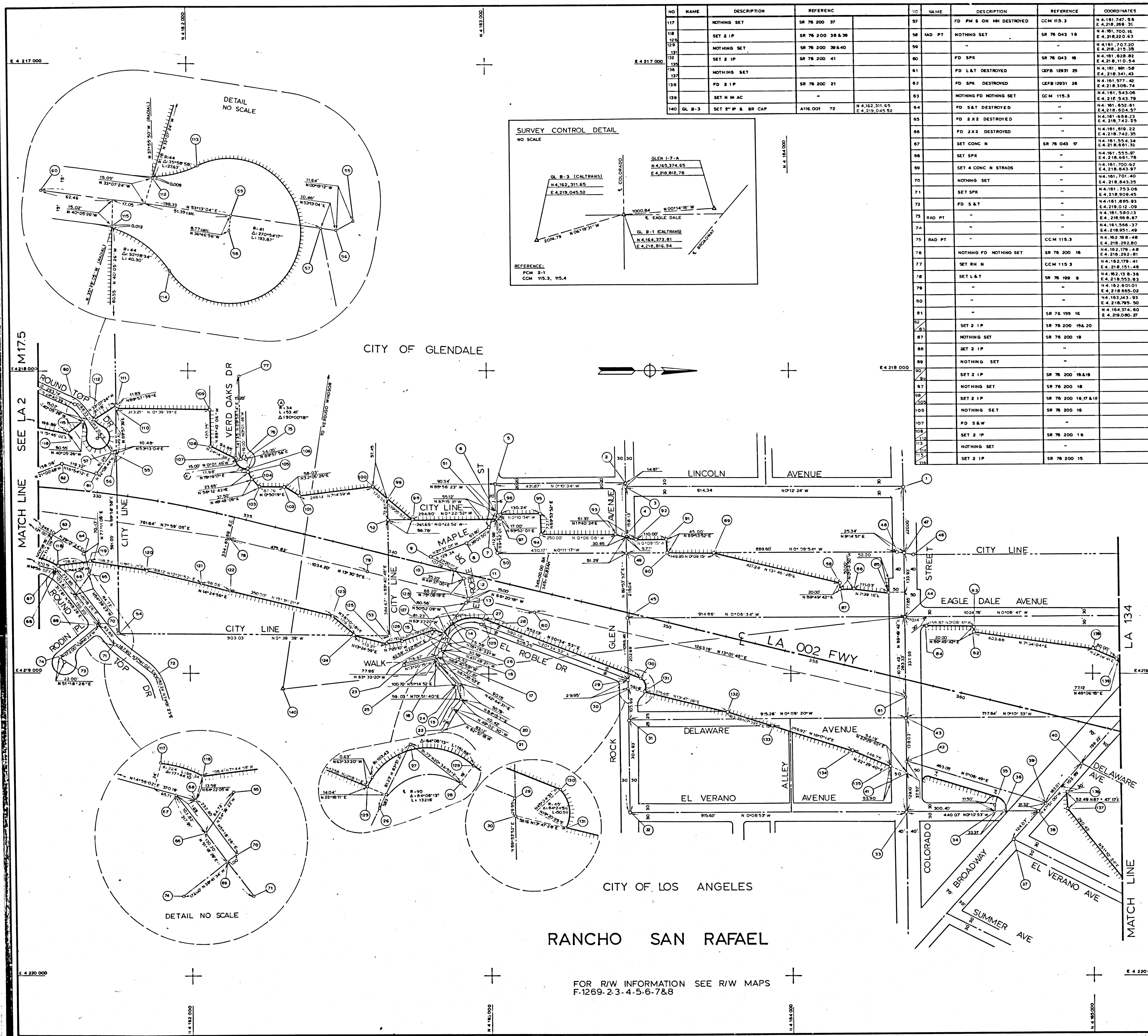
**LEGEND**

- △ SURVEY CONTROL POINTS
- POINTS OF SURVEY
- ANGLE POINTS
- SECTION CORNERS, RANCHO CORNERS
- RECORDED VALUE AS ESTABLISHED PREVIOUSLY
- ( ) VALUE ESTABLISHED BY DISTRICT 7 RIGHT OF WAY BRANCH

**NOTE**

- BEARINGS ARE BASED ON THE CALIFORNIA COORDINATE SYSTEM, DIVISION 8, SECTION 8809 OF THE 1953 PUBLIC RESOURCES CODE.
- DEPARTMENT OF TRANSPORTATION SURVEY INFORMATION IS AVAILABLE FROM THE SURVEY SECTION OF THE ENGINEERING SERVICES BRANCH, LOS ANGELES, CALIFORNIA.
- DEPARTMENT OF TRANSPORTATION RIGHT OF WAY INFORMATION IS AVAILABLE FROM THE RIGHT OF WAY BRANCH, LOS ANGELES, CALIFORNIA.
- STATIONING SHOWN ON THIS MAP IS FOR REFERENCE ONLY.

**IN LOS ANGELES COUNTY**  
 BLK.



NO	NAME	DESCRIPTION	REFERENCE	COORDINATES	NO	NAME	DESCRIPTION	REFERENCE	REMARKS
117		NOTHING SET	SR 76 200 37	N 4,161,747.89 E 4,218,269.35	57	FD PM 5 ON MH DESTROYED	CCM 115.3		N 4,164,272.52 E 4,218,395.16
118		SET 2 IP	SR 76 200 38 & 39	N 4,161,700.16 E 4,218,262.65	1	FD S&W			N 4,163,458.16 E 4,218,273.48
119		NOTHING SET	SR 76 200 38 & 40	N 4,161,707.30 E 4,218,215.38	2				N 4,163,459.19 E 4,218,288.46
120		SET 2 IP	SR 76 200 41	N 4,161,628.82 E 4,218,110.94	3	SET LAT			N 4,162,958.47 E 4,218,546.59
121		NOTHING SET		N 4,161,891.59 E 4,218,341.43	4	FD CONC N	SR 73 050 133		N 4,163,028.29 E 4,218,375.82
122		NOTHING SET		N 4,161,977.42 E 4,218,306.74	5	NOTHING FD NOTHING SET			N 4,163,028.29 E 4,218,495.16
123		FD 2 IP	SR 76 200 21	N 4,161,543.06 E 4,218,543.78	6				N 4,163,028.29 E 4,218,500.88
124		SET N W AC		N 4,161,543.06 E 4,218,543.78	7				N 4,163,028.29 E 4,218,515.99
125		SET 2 IP & BR CAP	A116.001 72	N 4,162,311.65 E 4,219,045.52	8				N 4,162,928.03 E 4,218,571.17
126				N 4,161,977.42 E 4,218,306.74	9				N 4,162,928.07 E 4,218,586.57
127				N 4,161,977.42 E 4,218,306.74	10				N 4,162,928.07 E 4,218,592.59
128				N 4,161,543.06 E 4,218,543.78	11				N 4,162,928.07 E 4,218,607.81
129				N 4,161,543.06 E 4,218,543.78	12				N 4,162,928.07 E 4,218,622.83
130				N 4,161,543.06 E 4,218,543.78	13	FD SPR DESTROYED	SR 73 050 156		N 4,162,928.07 E 4,218,637.85
131				N 4,161,543.06 E 4,218,543.78	14				N 4,162,928.07 E 4,218,652.87
132				N 4,161,543.06 E 4,218,543.78	15				N 4,162,928.07 E 4,218,667.89
133				N 4,161,543.06 E 4,218,543.78	16				N 4,162,928.07 E 4,218,682.91
134				N 4,161,543.06 E 4,218,543.78	17				N 4,162,928.07 E 4,218,697.93
135				N 4,161,543.06 E 4,218,543.78	18				N 4,162,928.07 E 4,218,712.95
136				N 4,161,543.06 E 4,218,543.78	19				N 4,162,928.07 E 4,218,727.97
137				N 4,161,543.06 E 4,218,543.78	20				N 4,162,928.07 E 4,218,742.99
138				N 4,161,543.06 E 4,218,543.78	21				N 4,162,928.07 E 4,218,757.01
139				N 4,161,543.06 E 4,218,543.78	22				N 4,162,928.07 E 4,218,772.03
140				N 4,161,543.06 E 4,218,543.78	23				N 4,162,928.07 E 4,218,787.05
141				N 4,161,543.06 E 4,218,543.78	24				N 4,162,928.07 E 4,218,802.07
142				N 4,161,543.06 E 4,218,543.78	25				N 4,162,928.07 E 4,218,817.09
143				N 4,161,543.06 E 4,218,543.78	26				N 4,162,928.07 E 4,218,832.11
144				N 4,161,543.06 E 4,218,543.78	27				N 4,162,928.07 E 4,218,847.13
145				N 4,161,543.06 E 4,218,543.78	28				N 4,162,928.07 E 4,218,862.15
146				N 4,161,543.06 E 4,218,543.78	29				N 4,162,928.07 E 4,218,877.17
147				N 4,161,543.06 E 4,218,543.78	30				N 4,162,928.07 E 4,218,892.19
148				N 4,161,543.06 E 4,218,543.78	31				N 4,162,928.07 E 4,218,907.21
149				N 4,161,543.06 E 4,218,543.78	32				N 4,162,928.07 E 4,218,922.23
150				N 4,161,543.06 E 4,218,543.78	33				N 4,162,928.07 E 4,218,937.25
151				N 4,161,543.06 E 4,218,543.78	34				N 4,162,928.07 E 4,218,952.27
152				N 4,161,543.06 E 4,218,543.78	35				N 4,162,928.07 E 4,218,967.29
153				N 4,161,543.06 E 4,218,543.78	36				N 4,162,928.07 E 4,218,982.31
154				N 4,161,543.06 E 4,218,543.78	37				N 4,162,928.07 E 4,218,997.33
155				N 4,161,543.06 E 4,218,543.78	38				N 4,162,928.07 E 4,219,012.35
156				N 4,161,543.06 E 4,218,543.78	39				N 4,162,928.07 E 4,219,027.37
157				N 4,161,543.06 E 4,218,543.78	40				N 4,162,928.07 E 4,219,042.39
158				N 4,161,543.06 E 4,218,543.78	41				N 4,162,928.07 E 4,219,057.41
159				N 4,161,543.06 E 4,218,543.78	42				N 4,162,928.07 E 4,219,072.43
160				N 4,161,543.06 E 4,218,543.78	43				N 4,162,928.07 E 4,219,087.45
161				N 4,161,543.06 E 4,218,543.78	44				N 4,162,928.07 E 4,219,102.47
162				N 4,161,543.06 E 4,218,543.78	45				N 4,162,928.07 E 4,219,117.49
163				N 4,161,543.06 E 4,218,543.78	46				N 4,162,928.07 E 4,219,132.51
164				N 4,161,543.06 E 4,218,543.78	47				N 4,162,928.07 E 4,219,147.53
165				N 4,161,543.06 E 4,218,543.78	48				N 4,162,928.07 E 4,219,162.55
166				N 4,161,543.06 E 4,218,543.78	49				N 4,162,928.07 E 4,219,177.57
167				N 4,161,543.06 E 4,218,543.78	50				N 4,162,928.07 E 4,219,192.59
168				N 4,161,543.06 E 4,218,543.78	51				N 4,162,928.07 E 4,219,207.61
169				N 4,161,543.06 E 4,218,543.78	52				N 4,162,928.07 E 4,219,222.63
170				N 4,161,543.06 E 4,218,543.78	53				N 4,162,928.07 E 4,219,237.65
171				N 4,161,543.06 E 4,218,543.78	54				N 4,162,928.07 E 4,219,252.67
172				N 4,161,543.06 E 4,218,543.78	55				N 4,162,928.07 E 4,219,267.69
173				N 4,161,543.06 E 4,218,543.78	56				N 4,162,928.07 E 4,219,282.71
174				N 4,161,543.06 E 4,218,543.78	57				N 4,162,928.07 E 4,219,297.73
175				N 4,161,543.06 E 4,218,543.78	58				N 4,162,928.07 E 4,219,312.75
176				N 4,161,543.06 E 4,218,543.78	59				N 4,162,928.07 E 4,219,327.77
177				N 4,161,543.06 E 4,218,543.78	60				N 4,162,928.07 E 4,219,342.79
178				N 4,161,543.06 E 4,218,543.78	61				N 4,162,928.07 E 4,219,357.81
179				N 4,161,543.06 E 4,218,543.78	62				N 4,162,928.07 E 4,219,372.83
180				N 4,161,543.06 E 4,218,543.78	63				N 4,162,928.07 E 4,219,387.85
181				N 4,161,543.06 E 4,218,543.78	64				N 4,162,928.07 E 4,219,402.87
182				N 4,161,543.06 E 4,218,543.78	65				N 4,162,928.07 E 4,219,417.89
183				N 4,161,543.06 E 4,218,543.78	66				N 4,162,928.07 E 4,219,432.91
184				N 4,161,543.06 E 4,218,543.78	67				N 4,162,928.07 E 4,219,447.93
185				N 4,161,543.06 E 4,218,543.78	68				N 4,162,928.07 E 4,219,462.95
186				N 4,161,543.06 E 4,218,543.78	69				N 4,162,928.07 E 4,219,477.97
187				N 4,161,543.06 E 4,218,543.78	70				N 4,162,928.07 E 4,219,492.99
188				N 4,161,543.06 E 4,218,543.78	71				N 4,162,928.07 E 4,219,507.01
189				N 4,161,543.06 E 4,218,543.78	72				N 4,162,928.07 E 4,219,522.03
190				N 4,161,543.06 E 4,218,543.78	73				N 4,162,928.07 E 4,219,537.05
191				N 4,161,543.06 E 4,218,543.78	74				N 4,162,928.07 E 4,219,552.07
192				N 4,161,543.06 E 4,218,543.78	75				N 4,162,928.07 E 4,219,567.09
193				N 4,161,543.06 E 4,218,543.78	76				N 4,162,928.07 E 4,219,582.11
194				N 4,161,543.06 E 4,218,543.78	77				N 4,162,928.07 E 4,219,597.13
195				N 4,161,543.06 E 4,218,543.78	78				N 4,162,928.07 E 4,219,612.15
196				N 4,161,543.06 E 4,218,543.78	79				N 4,162,928.07 E 4,219,627.17
197				N 4,161,543.06 E 4,218,543.78	80				N 4,162,928.07 E 4,219,642.19
198				N 4,161,543.06 E 4,218,543.78	81				N 4,162,928.07 E 4,219,657.21
199				N 4,161,543.06 E 4,218,543.78	82				N 4,162,928.07 E 4,219,672.23
200				N 4,161,543.06 E 4,218,543.78	83				N 4,162,928.07 E 4,219,687.25
201				N 4,161,543.06 E 4,218,543.78	84				N 4,162,928.07 E 4,219,702.27
202				N 4,161,543.06 E 4,218,543.78	85				N 4,162,928.07 E 4,219,717.29
203				N 4,161,543.06 E 4,218,543.78	86				N 4,162,928.07 E 4,219,732.31
204				N 4,161,543.06 E 4,218,543.78	87				N 4,162,928.07 E 4,219,747.33
205				N 4,161,543.06 E 4,218,543.78	88				N 4,162,928.07 E 4,219,762.35
206				N 4,161,543.06 E 4,218,543.78	89				N 4,162,928.07 E 4,219,777.37
207				N 4,161,543.06 E 4,218,543.78	90				N 4,162,928.07 E 4,219,792.39
208				N 4,161,543.06 E 4,218,543.78	91				N 4,162,928.07 E 4,219,807.41
209				N 4,161,543.06 E 4,218,543.78	92				N 4,162,928.07 E 4,219,822.43
210				N 4,161,543.06 E 4,218,543.78	93				N 4,162,928.07 E 4,219,837.45
211				N 4,161,543.06 E 4,218,543.78	94				