

NO.	NAME	DESCRIPTION	REFERENCE	REMARKS	NO.	NAME	DESCRIPTION	REFERENCE	REMARKS
65		SET SPK & T	PER TRACT MAP NO. 28187-3	N 4, 211, 439.44 E 4, 121, 569.27	70		SET SPK & T	PER TRACT MAP NO. 24887-3	N 4, 211, 143.24 E 4, 119, 815.06
66		" " " "	" " " "	N 4, 211, 637.49 E 4, 121, 609.02	71		" " " "	" " " "	N 4, 211, 236.35 E 4, 120, 001.86
67		SET SPK & T	" " " "	N 4, 211, 641.04 E 4, 121, 591.37	72		" " " "	" " " "	N 4, 211, 187.67 E 4, 120, 018.16
68		" " " "	" " " "	N 4, 211, 383.15 E 4, 121, 849.67	73		" " " "	" " " "	N 4, 211, 137.49 E 4, 120, 080.81
69		" " " "	" " " "	N 4, 211, 727.29 E 4, 121, 918.75	74		" " " "	" " " "	N 4, 211, 104.25 E 4, 120, 246.42
90		" " " "	" " " "	N 4, 211, 730.83 E 4, 121, 901.11	75		" " " "	" " " "	N 4, 211, 236.61 E 4, 120, 272.99
91		" " " "	" " " "	N 4, 211, 326.87 E 4, 122, 130.08	76		" " " "	" " " "	N 4, 211, 090.52 E 4, 120, 514.08
92		" " " "	" " " "	N 4, 211, 808.44 E 4, 122, 226.73	77		SET 4 PM'S ON S.M.H.	" " " "	N 4, 211, 053.46 E 4, 120, 514.67
93		" " " "	" " " "	N 4, 211, 804.93 E 4, 122, 244.40	78		SET SPK & T	" " " "	N 4, 211, 258.04 E 4, 120, 555.74
94		" " " "	" " " "	N 4, 211, 270.18 E 4, 122, 412.48	79		" " " "	" " " "	N 4, 211, 316.65 E 4, 120, 646.77
95		" " " "	" " " "	N 4, 211, 587.14 E 4, 122, 476.07	80		SET 4 PM'S ON S.M.H.	PER TRACT MAP NO. 24887-2	N 4, 211, 276.79 E 4, 120, 855.29
96		" " " "	" " " "	N 4, 211, 702.48 E 4, 122, 535.94	81		SET SPK & T	" " " "	N 4, 211, 403.26 E 4, 120, 880.68
97		" " " "	" " " "	N 4, 211, 749.61 E 4, 122, 580.68	82		FD SPK & T	" " " "	N 4, 210, 936.74 E 4, 121, 096.07
98		" " " "	" " " "	N 4, 211, 599.70 E 4, 122, 719.40	83		FD 4 PM'S ON S.M.H.	" " " "	N 4, 211, 217.10 E 4, 121, 152.36
99		" " " "	" " " "	N 4, 211, 760.41 E 4, 122, 990.93	84		FD SPK & T	" " " "	N 4, 211, 511.28 E 4, 121, 211.40

NO.	NAME	DESCRIPTION	REFERENCE	REMARKS
1	CH 19	FD L & T	SR 75 125 31 & 37	N 4, 211, 870.84 E 4, 122, 398.84
2	CH 20	" " " "	SR 75 125 37	N 4, 211, 880.47 E 4, 122, 292.46
3	CH 20AK	SET L & T	" " " "	N 4, 212, 776.53 E 4, 122, 355.33
4	CH 29	" " " "	SR 75 125 36	N 4, 212, 648.27 E 4, 121, 320.12
5	CH 27	" " " "	" " " "	N 4, 212, 551.68 E 4, 120, 574.80
6	CH 27	FD 4 PM'S ON MH RIM	SR 75 125 90	N 4, 212, 455.93 E 4, 119, 534.26
7	PI 66	SET RR SPK	SR 75 125 35 & 40	N 4, 211, 961.17 E 4, 119, 558.94
8	CH 26	SET L & T	SR 75 125 35	N 4, 210, 977.30 E 4, 119, 884.75
9	PI	FD STD SURV MON	SR 75 125 107	N 4, 210, 863.18 E 4, 119, 338.80
10	PI	FD STAW	SR 75 125 90	N 4, 211, 600.26 E 4, 119, 418.00
11	PI 65	FD 2" IP & CAP	" " " "	N 4, 211, 871.54 E 4, 119, 749.28
12	PI 64	SET 1" IP W/ PLASTIC CAP	SR 75 125 89	N 4, 211, 743.15 E 4, 120, 014.84
13	PI 63	FD L & T	" " " "	N 4, 211, 728.80 E 4, 120, 163.84
14	PI 62	SET 1" IP W/ PLASTIC CAP	" " " "	N 4, 211, 793.21 E 4, 120, 648.74
15	PI 61	" " " "	" " " "	N 4, 211, 990.03 E 4, 120, 814.15
16	PI 60	SET 2" X 2" & T	" " " "	N 4, 212, 095.03 E 4, 120, 846.79
17	PI 59	FD L & T	" " " "	N 4, 212, 332.98 E 4, 121, 397.78
18	PI 58	SET 1" IP W/ PLASTIC CAP	SR 75 125 88	N 4, 212, 312.78 E 4, 121, 692.71
19	PI 57	SET 6" SPK	" " " "	N 4, 212, 415.40 E 4, 121, 852.78
20	PI 56	SET 2" X 2" & T	" " " "	N 4, 212, 414.86 E 4, 121, 961.17
21	PI 55	SET 1" IP W/ PLASTIC CAP	SR 75 125 87	N 4, 212, 337.19 E 4, 122, 274.77
22		SET 5" & T	" " " "	N 4, 212, 475.46 E 4, 122, 387.83
23	PI 54	SET 2" X 2" & T	" " " "	N 4, 212, 531.83 E 4, 122, 456.30
24		FD STD SURV MON	SR 75 125 109	N 4, 211, 957.70 E 4, 122, 646.39
25		FD STAW	" " " "	N 4, 212, 124.43 E 4, 122, 492.71
26	PI	FD L & T	SR 75 125 31	N 4, 212, 612.65 E 4, 122, 368.04
27	PI	FD STD SURV MON	SR 75 125 16	N 4, 212, 724.66 E 4, 122, 342.81
28		" " " "	" " " "	N 4, 212, 932.40 E 4, 121, 963.40
29	PI	FD 5" & T	SR 75 125 17	N 4, 212, 774.43 E 4, 121, 910.88
30	PI	" " " "	SR 75 125 130	N 4, 212, 636.43 E 4, 120, 910.88
31		FD 4 PM'S ON MH RIM	" " " "	N 4, 212, 571.49 E 4, 120, 418.36
32		FD 50 SPK W/ LACE TAG	" " " "	N 4, 212, 339.67 E 4, 119, 367.39
33		FD STAW	SR 75 125 90	" " " "
34	DW & P	FD STD FC MON	SR 75 125 135	" " " "
35	"	" " " "	" " " "	" " " "
36	"	FD 1" X 2" & T	" " " "	" " " "
37	"	FD L & T	" " " "	" " " "
38	R/W	SET 1" IP W/ PLASTIC CAP	" " " "	" " " "
39	DW & P	FD STD FC MON	" " " "	" " " "
40	R/W	SET 1" IP W/ PLASTIC CAP	SR 75 125 136	" " " "
41	R/W	TO BE SET AFTER CONST.	" " " "	" " " "
42	R/W	TO BE SET AFTER CONST.	" " " "	" " " "
43	R/W	FD 2" IP W/ RICE TAG N 59513	SR 75 125 108 & 103	" " " "
44	"	" " " "	" " " "	" " " "
45	"	TO BE SET AFTER CONST.	" " " "	" " " "
46	R/W	" " " "	" " " "	" " " "
47	R/W	SET 1" IP W/ PLASTIC PLUG	SR 77 159 2 & 3	" " " "
48	R/W	SET 1" IP W/ PLASTIC PLUG	SR 77 159 2	" " " "
49	R/W	SET 1" IP W/ PLASTIC PLUG	SR 77 159 2	" " " "
50	R/W	TO BE SET AFTER CONST.	" " " "	" " " "
51	R/W	" " " "	" " " "	" " " "
52	R/W	SET 1" IP W/ PLASTIC PLUG	SR 77 159 2	" " " "
53	R/W	SET 1" IP W/ PLASTIC PLUG	SR 77 159 2	" " " "
54	R/W	SET 1" IP W/ PLASTIC PLUG	SR 77 159 2	" " " "
55	R/W	SET 1" IP W/ PLASTIC PLUG	SR 77 159 2	" " " "
56	R/W	SET 1" IP W/ PLASTIC PLUG	SR 77 159 2	" " " "
57	R/W	SET 1" IP W/ PLASTIC PLUG	SR 77 159 2	" " " "
58	R/W	SET 1" IP W/ PLASTIC PLUG	SR 77 159 2	" " " "
59	R/W	SET 1" IP W/ PLASTIC PLUG	SR 77 159 2	" " " "
60	R/W	SET 1" IP W/ PLASTIC PLUG	SR 77 159 2	" " " "
61	R/W	SET 1" IP W/ PLASTIC PLUG	SR 77 159 2	" " " "
62	R/W	SET 1" IP W/ PLASTIC PLUG	SR 77 159 2	" " " "
63	R/W	SET 1" IP W/ PLASTIC PLUG	SR 77 159 2	" " " "
64	R/W	SET 1" IP W/ PLASTIC PLUG	SR 77 159 2	" " " "
65	R/W	SET 1" IP W/ PLASTIC PLUG	SR 77 159 2	" " " "
66	R/W	SET 1" IP W/ PLASTIC PLUG	SR 77 159 2	" " " "
67	R/W	SET 1" IP W/ PLASTIC PLUG	SR 77 159 2	" " " "
68	R/W	SET 1" IP W/ PLASTIC PLUG	SR 77 159 2	" " " "
69	R/W	SET 1" IP W/ PLASTIC PLUG	SR 77 159 2	" " " "

**LEGEND**

- △ SURVEY CONTROL POINTS
- POINTS OF SURVEY
- ◇ ANGLE POINTS
- SECTION CORNERS, RANCHO CORNERS
- RECORDED VALUE AS ESTABLISHED PREVIOUSLY
- ( ) VALUE ESTABLISHED BY DISTRICT 7 RIGHT OF WAY BRANCH

**NOTE:**

- BEARINGS ARE BASED ON THE CALIFORNIA COORDINATE SYSTEM, DIVISION 8, SECTION 8809 OF THE 1923 PUBLIC RESOURCES CODE.
- DEPARTMENT OF TRANSPORTATION SURVEY INFORMATION IS AVAILABLE FROM THE SURVEY SECTION OF THE ENGINEERING SERVICES BRANCH, LOS ANGELES, CALIFORNIA.
- DEPARTMENT OF TRANSPORTATION RIGHT OF WAY INFORMATION IS AVAILABLE FROM THE RIGHT OF WAY BRANCH, LOS ANGELES, CALIFORNIA.
- STATIONING SHOWN ON THIS MAP IS FOR REFERENCE ONLY.

**IN LOS ANGELES COUNTY**  
BLK. 2112 MOD. 21

TO OBTAIN GROUND LEVEL DISTANCES DIVIDE GRID DISTANCES SHOWN BY 899945747  
GRID WAS ESTABLISHED FROM LOS ANGELES COUNTY CONTROL POINTS  
ZEL N 2 E 4, 124, 286.80 ZEL C 2 E 4, 112, 920.40

CONSTRUCTION CONTRACT NO. \_\_\_\_\_ COMPLETION DATE: \_\_\_\_\_

ORIGINAL SCALE: 1" = 100'  
100 200 300 400 500 FEET

**LOS ANGELES COUNTY FILE NO.**

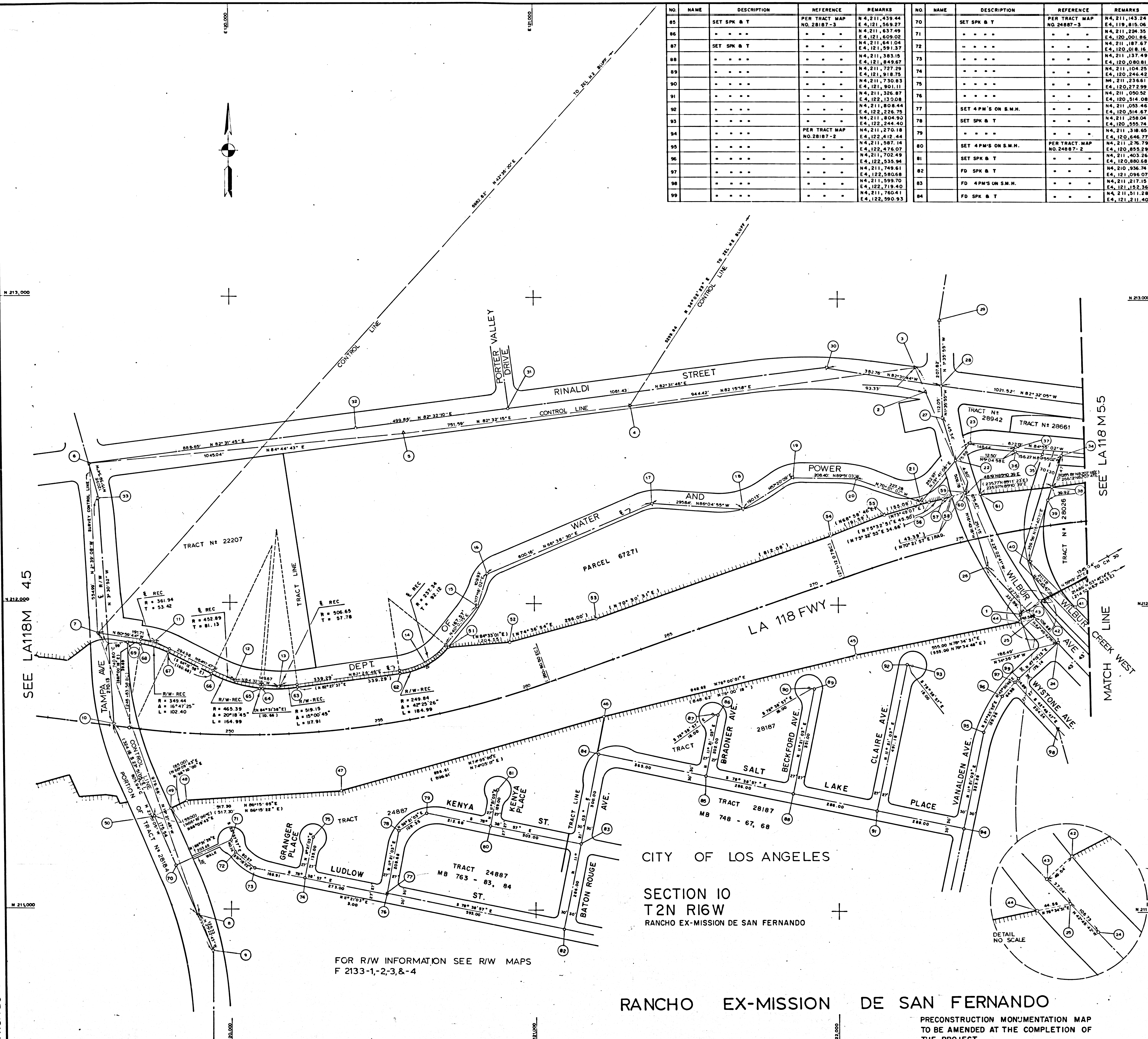
STATE OF CALIFORNIA - DEPARTMENT OF TRANSPORTATION - SURVEYS

DISTRICT	COUNTY	ROUTE	POST MILES - TOTAL PROJECT	SHEET	TOTAL SHEETS	Chief of Party	Office Supervisor
07	LA	118	4.7 - 7.3	3	15	E. RAYE	L. ZEHFUS

**MONUMENTATION MAP**  
MAP NO. LA 118 M-50

CALIFORNIA COORDINATE SYSTEM - ZONE 7

DATE: 10-18-77



CITY OF LOS ANGELES

SECTION 10  
T2N R16W  
RANCHO EX-MISSION DE SAN FERNANDO

RANCHO EX-MISSION DE SAN FERNANDO

PRECONSTRUCTION MONUMENTATION MAP  
TO BE AMENDED AT THE COMPLETION OF  
THE PROJECT.

FOR R/W INFORMATION SEE R/W MAPS  
F 2133-1,-2,3,&-4

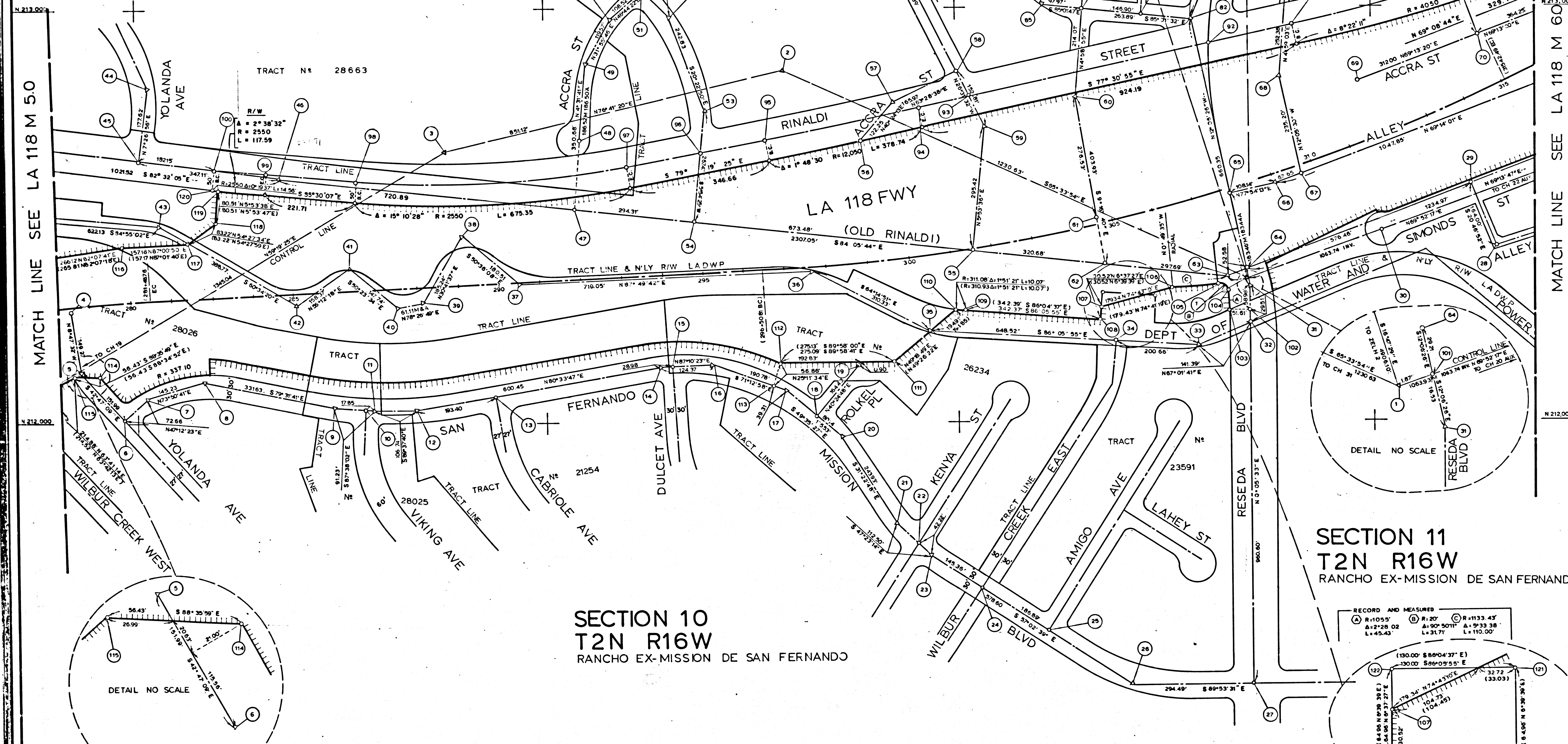
F.M. 21745-1

NO	NAME	DESCRIPTION	REFERENCE	REMARKS	NO	NAME	DESCRIPTION	REFERENCE	REMARKS
16	PI	FD S&T	FB-50631-18	N 4,212,681.60 E 4,124,769.83	86		FD 4 PMS ON MH RIM	PE-3F-859	N 4,213,424.14 E 4,124,974.65
17	PI			N 4,212,774.70 E 4,124,849.07	87			FB-50631-17	N 4,213,009.89 E 4,124,977.36
18	PI	FD 4 PMS ON MH RIM	SR-75125-25	N 4,212,648.81 E 4,124,997.37	88			FB-50631-16	N 4,213,158.73 E 4,124,842.84
19	PI	FD S&T	SR-75125-18	N 4,212,712.09 E 4,125,065.82	89		TO BE SET AFTER CONST		
20	PI			N 4,212,783.89 E 4,125,289.34	90				
21	PI			N 4,212,910.98 E 4,125,333.92	91				
22	PI	FD STD SURV MON	SR-75125-16	N 4,212,354.62 E 4,125,354.46	92				
23	PI			N 4,212,354.62 E 4,125,354.46	93				
24	PI	FD S&T	SR-75125-15	N 4,212,373.26 E 4,125,699.74	94				
25	PI			N 4,212,552.62 E 4,125,861.26	95				
26	PI			N 4,212,552.62 E 4,125,861.26	96				
27	PI	FD L&T	SR-75125-21	N 4,212,590.27 E 4,125,830.26	97				
28	PI	FD S&T	SR-75125-22	N 4,212,829.23 E 4,125,780.99	98				
29	PI	FD 4 PMS ON MH RIM	SR-75125-21	N 4,212,822.20 E 4,125,967.28	99				
30	PI	FD 4 PMS ON MH RIM	SR-75125-21	N 4,212,932.88 E 4,126,258.59	100				
31	PI			N 4,213,188.96 E 4,126,161.80	101		SET CONC N	SR-75125-105	N 4,212,344.70 E 4,125,705.86
32	PI	FD S&T	SR-75125-22	N 4,213,321.24 E 4,126,111.60	102		TO BE SET AFTER CONST		
33	PI			N 4,213,446.13 E 4,126,113.03	103		FD 2"IP W/WOOD CONTROL TAG	SR-75125-139	
34	PI	FD 4 PMS ON MH RIM		N 4,213,548.58 E 4,126,154.63	104		SET 1"IP W/PLASTIC CAP		
35	PI	FD S&T	SR-75125-23	N 4,213,811.33 E 4,126,261.06	105		FD 2"IP W/WOOD PLUG	SR-75125-198	
36	PI	FD S&T		N 4,213,840.80 E 4,126,280.86	106		SET 1"IP W/PLASTIC CAP	SR-75125-137	
37	PI	FD S&T		N 4,213,875.28 E 4,126,286.98	107		SET CONC N		
38	PI			N 4,213,605.14 E 4,126,015.58	108		SET CHIS X	SR-75125-132	
39	PI	FD L&T		N 4,213,197.53 E 4,125,937.93	109		SET 1"IP W/PLASTIC CAP	SR-75125-133&134	
40	PI	FD S&T		N 4,213,802.91 E 4,125,802.91	110		FD STD FC MON	SR-75125130	
41	PI	FD STD SURV MON	SR-75125-24	N 4,213,610.87 E 4,125,853.44	111				
42	PI	FD S&T	SR-75125-15	N 4,212,974.20 E 4,125,570.83	112				
43	PI			N 4,212,984.18 E 4,125,454.28	113				
44	PI	FD 4 PMS ON MH RIM	SR-75125-25	N 4,212,997.09 E 4,125,307.93	114				
45	PI	FD S&T	PE-3F-875	N 4,213,005.57 E 4,125,210.33	115				

SECTION 3  
T2N R16W  
RANCHO EX-MISSION DE SAN FERNANDO

SECTION 2  
T2N R16W  
RANCHO EX-MISSION DE SAN FERNANDO

NO	NAME	DESCRIPTION	REFERENCE	REMARKS
1	PORTER 7	FD STD SURV MON	SR 75 125-38	N 4,212,344.06 E 4,124,974.10
2	CH 31	SET 1"IP W/BR CAP		N 4,212,853.12 E 4,124,983.71
3	CH 30	SET L&T	SR 75 125-37	N 4,212,857.77 E 4,125,159.46
4		FD S&T	SR 75 125-30	N 4,212,573.03 E 4,124,974.10
5	PI	FD STD SURV MON		N 4,212,627.11 E 4,125,023.67
6				N 4,212,013.27 E 4,125,101.38
7		FD S&T		N 4,212,042.63 E 4,125,023.67
8				N 4,212,103.04 E 4,124,983.16
9	PI		SR 75 125-29	N 4,212,042.77 E 4,125,023.67
10				N 4,212,038.74 E 4,125,042.98
11	PI			N 4,212,039.00 E 4,125,039.31
12	PI	FD STD SURV MON	SR 75 125-28	N 4,212,039.31 E 4,125,039.31
13		FD 4 PMS ON MH RIM		N 4,212,070.02 E 4,125,039.31
14		FD S&T		N 4,212,136.76 E 4,124,978.48
15		FD 4 PMS ON MH RIM		N 4,212,136.76 E 4,125,039.31
16		FD S&T		N 4,212,144.81 E 4,125,039.31
17		FD SQ SPR	SR 75 125-27	N 4,212,081.46 E 4,124,984.32
18		FD 4 PMS ON MH RIM		N 4,212,019.42 E 4,125,039.31
19		FD S&T		N 4,212,144.81 E 4,125,039.31
20		FD RR SPR		N 4,211,987.87 E 4,125,039.31
21	PI			N 4,211,987.87 E 4,125,039.31
22		FD 4 PMS ON MH RIM		N 4,212,144.81 E 4,125,039.31
23		FD S&T		N 4,211,987.87 E 4,125,039.31
24		FD SPR W/LACE W	SR 75 125-26	N 4,211,804.18 E 4,125,039.31
25		FD STD SURV MON		N 4,211,804.18 E 4,125,039.31
26	PI			N 4,211,368.50 E 4,125,039.31
27				N 4,211,987.87 E 4,125,039.31
28		FD S&T	SR 75 125-15	N 4,212,454.35 E 4,125,039.31
29		FD S&T		N 4,212,377.68 E 4,125,039.31
30		TO BE SET AFTER CONST		
31	PI	FD STD SURV MON	SR 75 125-15	N 4,212,388.54 E 4,125,039.31
32			SR 75 127-83	N 4,212,240.04 E 4,125,039.31
33	PI 45	FD 2"IP W/LACFC TAG		N 4,212,194.87 E 4,125,039.31
34		FD L&T	SR 75 125-84	N 4,212,198.82 E 4,125,378.61
35	PI 46	SET 1"IP W/STEEL PLUG	SR 75 125-83	N 4,212,228.99 E 4,125,039.31
36	PI 47	SET 1"IP W/PLASTIC CAP	SR 75 125-85	N 4,212,363.83 E 4,124,982.48
37	PI 48	SET 2X2 & T		N 4,212,363.83 E 4,125,039.31
38	PI 49			N 4,212,363.83 E 4,125,039.31
39		FD 2"IP W/PLUG		N 4,212,363.83 E 4,125,039.31
40		SET 1X2 & T		N 4,212,363.83 E 4,125,039.31
41	PI 51	SET 2X2 & T		N 4,212,363.83 E 4,125,039.31
42	PI 52	FD 2"IP W/PLUG	SR 75 125-86	N 4,212,363.83 E 4,125,039.31
43	PI 53	FD 2X2 & T		N 4,212,363.83 E 4,125,039.31
44	PI	FD S&T	SR 75 125-17	N 4,212,812.10 E 4,125,039.31
45		FD S&T	SR 75 125-18	N 4,212,837.04 E 4,125,039.31
46	PI	FD STD SURV MON		N 4,212,591.94 E 4,125,355.77
47		FD STD SURV MON	FB 50631-24	N 4,212,571.78 E 4,124,978.48
48		FD S&T		N 4,212,812.10 E 4,125,039.31
49	PI		FB 50631-23	N 4,212,812.10 E 4,125,039.31
50	PI		FB 50631-22	N 4,212,948.84 E 4,125,159.46
51		FD STD SURV MON	FB 50631-21	N 4,212,948.84 E 4,125,159.46
52	PI	FD STD SURV MON	FB 50631-20	N 4,212,948.84 E 4,125,159.46
53	PI		SR 75 125-16	N 4,212,753.56 E 4,124,987.81
54		FD S&T		N 4,212,753.56 E 4,124,987.81
55		FD STD SURV MON	SR 75 125-25	N 4,212,418.23 E 4,125,039.31



SECTION 10  
T2N R16W  
RANCHO EX-MISSION DE SAN FERNANDO

SECTION 11  
T2N R16W  
RANCHO EX-MISSION DE SAN FERNANDO

RANCHO EX-MISSION DE SAN FERNANDO

FOR R/W INFORMATION SEE R/W MAPS  
F 2133-4,-5,-6,-7,-8, & F 2134-1  
PRECONSTRUCTION MONUMENTATION MAP  
TO BE AMENDED AT THE COMPLETION OF  
THE PROJECT.

**LEGEND**

- △ SURVEY CONTROL POINTS
- POINTS OF SURVEY
- ∠ ANGLE POINTS
- SECTION CORNERS, RANCHO CORNERS
- RECORDED VALUE AS ESTABLISHED PREVIOUSLY
- ( ) VALUE ESTABLISHED BY DISTRICT 7 RIGHT OF WAY BRANCH

**NOTE:**

- BEARINGS ARE BASED ON THE CALIFORNIA COORDINATE SYSTEM, DIVISION 8, SECTION 8809 OF THE 1953 PUBLIC RESOURCES CODE.
- DEPARTMENT OF TRANSPORTATION SURVEY INFORMATION IS AVAILABLE FROM THE SURVEY SECTION OF THE ENGINEERING SERVICES BRANCH, LOS ANGELES, CALIFORNIA.
- DEPARTMENT OF TRANSPORTATION RIGHT OF WAY INFORMATION IS AVAILABLE FROM THE RIGHT OF WAY BRANCH, LOS ANGELES, CALIFORNIA.
- STATIONING SHOWN ON THIS MAP IS FOR REFERENCE ONLY.

**IN LOS ANGELES COUNTY**  
BLK. 2112 MOD. 24

TO OBTAIN GROUND LEVEL DISTANCES, DIVIDE GRID DISTANCES SHOWN BY 0.9998427.  
GRID WAS ESTABLISHED FROM LOS ANGELES COUNTY CONTROL POINTS:  
PEL M 2 N 4,217,040.29 E 4,124,285.80  
ZEL C 2 N 4,217,343.26 E 4,124,920.40

CONSTRUCTION CONTRACT NO. \_\_\_\_\_ COMPLETION DATE: \_\_\_\_\_

ORIGINAL SCALE: 1" = 100'  
100 8 4 2 0 100 200 300 400 500 FEET

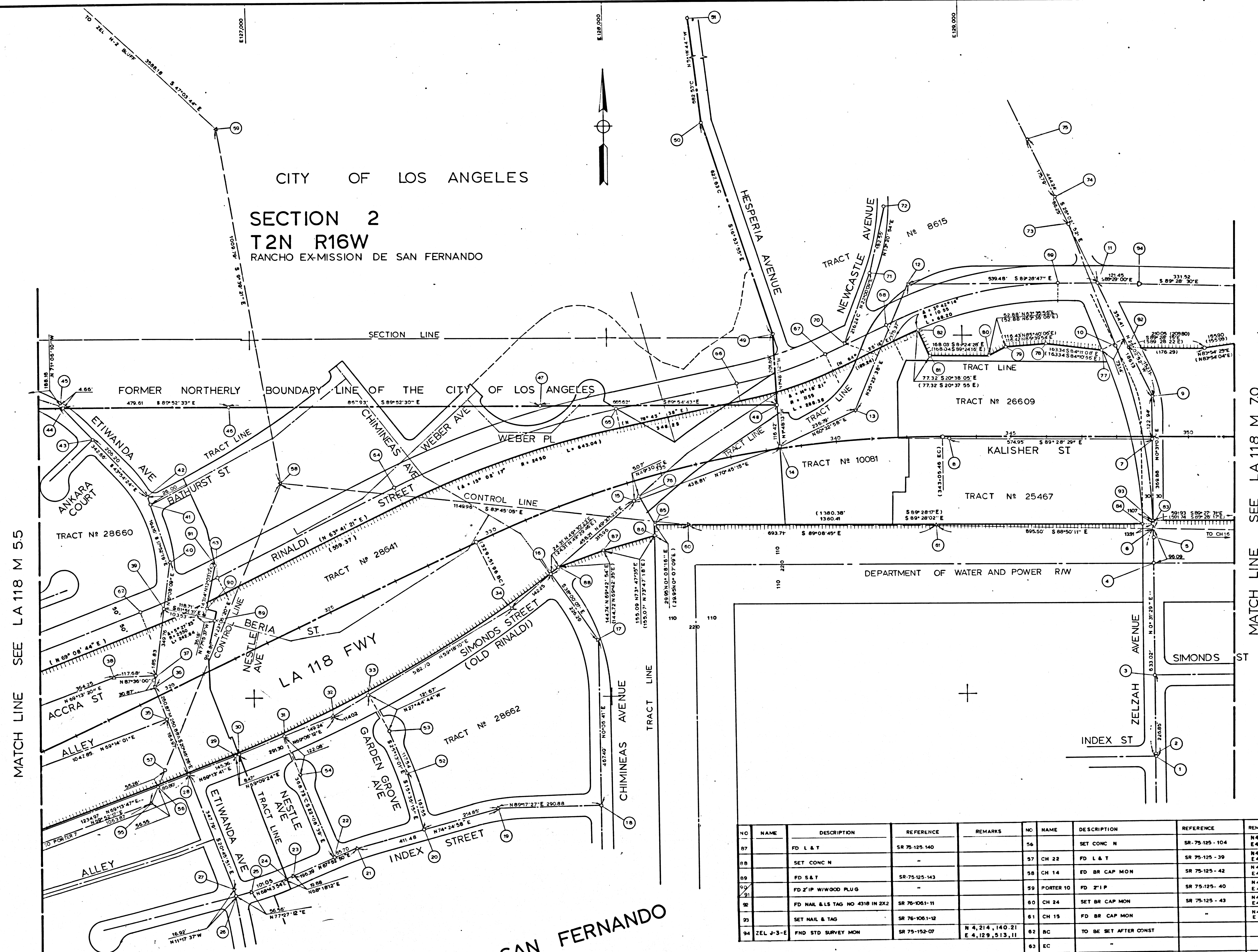
**LOS ANGELES COUNTY FILE NO.**

STATE OF CALIFORNIA - DEPARTMENT OF TRANSPORTATION - SURVEYS			
DISTRICT	COUNTY	ROUTE	POST MILES - TOTAL PROJECT
07	LA	118	4.7 - 7.3
Chief of Party P. NELSON			
Office Supervisor L. NELSON			
<b>MONUMENTATION MAP</b>		Calc. & Compiled by A. LUDWIG	Checked by A. BRADSHAW
MAP NO. LA 118 M-55		Project Engineer A. LUDWIG	Drawn by A. LUDWIG
CALIFORNIA COORDINATE SYSTEM - ZONE 7			
Scale 10 - 18 - 77			

F.M. 21745-2

CITY OF LOS ANGELES

SECTION 2  
T2N R16W  
RANCHO EX-MISSION DE SAN FERNANDO



MATCH LINE SEE LA 118 M 55

MATCH LINE SEE LA 118 M 70

RANCHO EX-MISSION DE SAN FERNANDO  
SECTION 11  
T2N R16W  
RANCHO EX-MISSION DE SAN FERNANDO

FOR R/W INFORMATION SEE R/W MAPS  
F 2134-1,-2,-3,-4  
PRECONSTRUCTION MONUMENTATION MAP  
TO BE AMENDED AT THE COMPLETION OF  
THE PROJECT.

NO	NAME	DESCRIPTION	REFERENCE	REMARKS	NO	NAME	DESCRIPTION	REFERENCE	REMARKS
87		FD L & T	SR 75-125-140		54		SET CONC N	SR 75-125-104	N 4,212,762.13 E 4,126,725.06
88		SET CONC N			57	CH 22	FD L & T		N 4,212,812.98 E 4,126,745.76
89		FD S & T	SR 75-125-143		58	CH 14	FD BR CAP MON	SR 75-125-42	N 4,213,601.22 E 4,127,083.05
90		FD 2" IP W/WOOD PLUG			59	PORTER 10	FD 2" IP	SR 75-125-40	N 4,214,900.70 E 4,126,913.68
91		FD NAIL & L&S TAG NO 4318 IN 2X2	SR 75-1061-11		60	CH 24	SET BR CAP MON	SR 75-125-43	N 4,213,476.05 E 4,128,225.18
92		SET NAIL & TAG	SR 75-1061-12		61	CH 15	FD BR CAP MON		N 4,213,455.71 E 4,128,919.82
93	ZEL 2-S-E	FD STD SURV MON	SR 75-152-07	N 4,214,140.21 E 4,129,313.11	62	BC	TO BE SET AFTER CONST		
63	EC				63	EC			
64	BC				64	BC			
65	EC				65	EC			
66	BC				66	BC			
67	EC				67	EC			
68	BC				68	BC			
69	EC				69	EC			
70		FD 2X2 & T	SR 75-125-11	N 4,213,985.72 E 4,126,822.13	70		FD 2" IP		N 4,214,186.21 E 4,128,743.14
71		FD 2" IP			71		FD STD SURV MON		N 4,214,365.82 E 4,128,783.38
72		FD STD SURV MON			72		SET CONC N	SR 75-125-4	N 4,214,305.00 E 4,126,311.65
73		SET CONC N			73		FD SO S & T		N 4,214,387.49 E 4,129,273.78
74		FD SO S & T			74		FD STD SURV MON		N 4,214,540.43 E 4,129,194.59
75		FD STD SURV MON			75		SET 1" IP W/PLASTIC CAP	SR 75-125-140	N 4,213,549.33 E 4,128,074.62
76		FD S & T			76		FD 2" IP TAGGED RCE 11288		
77		SET 1" IP W/PLASTIC CAP			77		FD 2" IP TAGGED RCE 11467		
78		FD PK N			78		SET 1" IP W/PLASTIC CAP	SR 75-125-140	
79		FD 2" IP TAGGED RCE 11467			79				
80		SET 1" IP W/PLASTIC CAP			80				
81					81				
82					82				
83					83				
84					84				
85					85				
86					86				
87					87				
88					88				

NO	NAME	DESCRIPTION	REFERENCE	REMARKS
1		FD STD SURV MON	SR 75 125 2	N 4,212,820.04 E 4,129,338.15
2				
3		FD SO S & T		N 4,213,046.88 E 4,129,540.23
4		FD RR SPK		N 4,213,356.84 E 4,129,543.07
5	BC	TO BE SET AFTER CONST		
6		FD SO S & T	SR 75 125 3	N 4,213,453.03 E 4,129,543.93
7		FD SO S & T		N 4,213,699.26 E 4,129,546.18
8		FD SO S & T		N 4,213,703.23 E 4,129,547.29
9	PI	FD STD SURV MON		N 4,213,822.90 E 4,129,547.29
10	EC	TO BE SET AFTER CONST		
11		FD STD SURV MON	SR 75 125 4	N 4,214,141.31 E 4,129,391.66
12	PI	FD 2" IP	SR 75 125 5	N 4,214,146.21 E 4,128,852.20
13		FD CONC N		N 4,213,807.10 E 4,126,931.23
14		SET 2X2 & T	SR 75 125 6	N 4,213,693.68 E 4,128,485.04
15		FD S & T	SR 75 125 12	N 4,213,546.04 E 4,128,074.78
16				N 4,213,340.87 E 4,127,830.48
17	PI	FD L & T		N 4,213,163.35 E 4,127,969.80
18		FD 4 PMS ON MH RIM	SR 75 125 18	N 4,212,695.16 E 4,127,969.89
19	PI			N 4,212,681.56 E 4,127,678.03
20			SR 75 125 19	N 4,212,633.84 E 4,127,431.09
21	PI	FD S & T		N 4,212,581.01 E 4,127,281.68
22		FD 4 PMS ON MH RIM	SR 75 125 20	N 4,212,556.27 E 4,127,250.82
23	PI	FD S & T		N 4,212,507.06 E 4,127,099.75
24		FD S & T		N 4,212,499.7 E 4,127,081.28
25	PI	FD S & T	PE 3F 224	N 4,212,463.06 E 4,126,950.11
26			503030.7	N 4,212,467.36 E 4,126,931.89
27		FD STD SURV MON	SR 75 125 15	N 4,212,792.56 E 4,126,805.28
28				N 4,212,414.11 E 4,126,641.19
29		FD S & T	SR 75 125 14	N 4,212,847.13 E 4,126,949.11
30				N 4,212,897.80 E 4,127,081.83
31				N 4,212,951.03 E 4,127,081.83
32				N 4,213,009.24 E 4,127,319.30
33				N 4,213,248.50 E 4,127,322.10
34				N 4,212,946.81 E 4,126,712.76
35	PI	FD S & T		N 4,213,067.02 E 4,126,717.13
36	PI	FD 4 PMS ON MH RIM		N 4,213,062.09 E 4,126,599.55
37				N 4,213,250.98 E 4,126,743.43
38	PI	FD S & T		N 4,213,382.70 E 4,126,662.26
39		FD 4 PMS ON MH RIM		N 4,213,542.74 E 4,126,710.60
40	PI	FD S & T	SR 75 125 23	N 4,213,567.48 E 4,126,702.82
41		FD S & W		N 4,213,716.04 E 4,126,559.62
42	PI	FD STD SURV MON		N 4,213,811.00 E 4,126,458.17
43		FD 4 PMS ON MH RIM	PE 3F 214	N 4,213,811.00 E 4,126,458.17
44		FD SPK & CITY ENGR W	SR 75 125 23	N 4,213,811.00 E 4,126,458.17
45	PI	FD STD SURV MON		N 4,213,811.00 E 4,126,458.17
46		SET 1" IP W/PLASTIC CAP	SR 75 125 7	N 4,213,809.96 E 4,126,347.83
47		FD 3/4" IP		N 4,213,808.07 E 4,127,015.76
48		FD 4" BR CAP MON		N 4,213,807.05 E 4,128,481.38
49		FD 2" IP		N 4,214,008.84 E 4,128,475.03
50			SR 75 125 8	N 4,214,509.18 E 4,128,292.59
51			SR 75 125 9	N 4,215,288.77 E 4,128,229.40
52	PI	FD S & T	PE 3F 192	N 4,212,795.22 E 4,127,428.03
53		FD 4 PMS ON MH RIM	SR 75 125 13	N 4,212,901.56 E 4,127,575.84
54		FD SO S & T	SR 75 125 14	N 4,212,944.72 E 4,127,575.84
55	CH 22AUX	SET L & T	SR 75 125 30	N 4,212,710.12 E 4,126,702.87

**LEGEND**

- SURVEY CONTROL POINTS
- POINTS OF SURVEY
- △ ANGLE POINTS
- SECTION CORNERS, RANCHO CORNERS
- ◇ RECORDED VALUE AS ESTABLISHED PREVIOUSLY
- ( ) VALUE ESTABLISHED BY DISTRICT RIGHT OF WAY BRANCH

**NOTE**

- BEARINGS ARE BASED ON THE CALIFORNIA COORDINATE SYSTEM, DIVISION 8, SECTION 8909 OF THE 1933 PUBLIC RESOURCES CODE.
- DEPARTMENT OF TRANSPORTATION SURVEY INFORMATION IS AVAILABLE FROM THE SURVEY SECTION OF THE ENGINEERING SERVICES BRANCH, LOS ANGELES, CALIFORNIA.
- DEPARTMENT OF TRANSPORTATION RIGHT OF WAY INFORMATION IS AVAILABLE FROM THE RIGHT OF WAY BRANCH, LOS ANGELES, CALIFORNIA.
- STATIONING SHOWN ON THIS MAP IS FOR REFERENCE ONLY.

**IN LOS ANGELES COUNTY**  
BLK. 2112 MOD. 37

TO OBTAIN GROUND LEVEL DISTANCES DIVIDE GRID DISTANCES SHOWN BY 0.999458719  
GRID WAS ESTABLISHED FROM LOS ANGELES COUNTY CONTROL POINTS:  
ZEL N 4,212,040.88 ZEL C 2 A 5,812,243.28  
E 4,124,286.50 ZEL C 2 B 5,812,243.28 E 4,112,020.40

CONSTRUCTION CONTRACT NO. \_\_\_\_\_ COMPLETION DATE: \_\_\_\_\_

ORIGINAL SCALE: 1" = 100'  
100 200 300 400 500 FEET

**LOS ANGELES COUNTY FILE NO.**

STATE OF CALIFORNIA - DEPARTMENT OF TRANSPORTATION - SURVEYS

DISTRICT	COUNTY	ROUTE	POST MILES - TOTAL PROJECT	PROJECT MILE	DATE	Chief of Party	Office Supervisor
07	LA	118	4.7 - 7.3	3	5	P. NELSON	L. ZEMPHUS

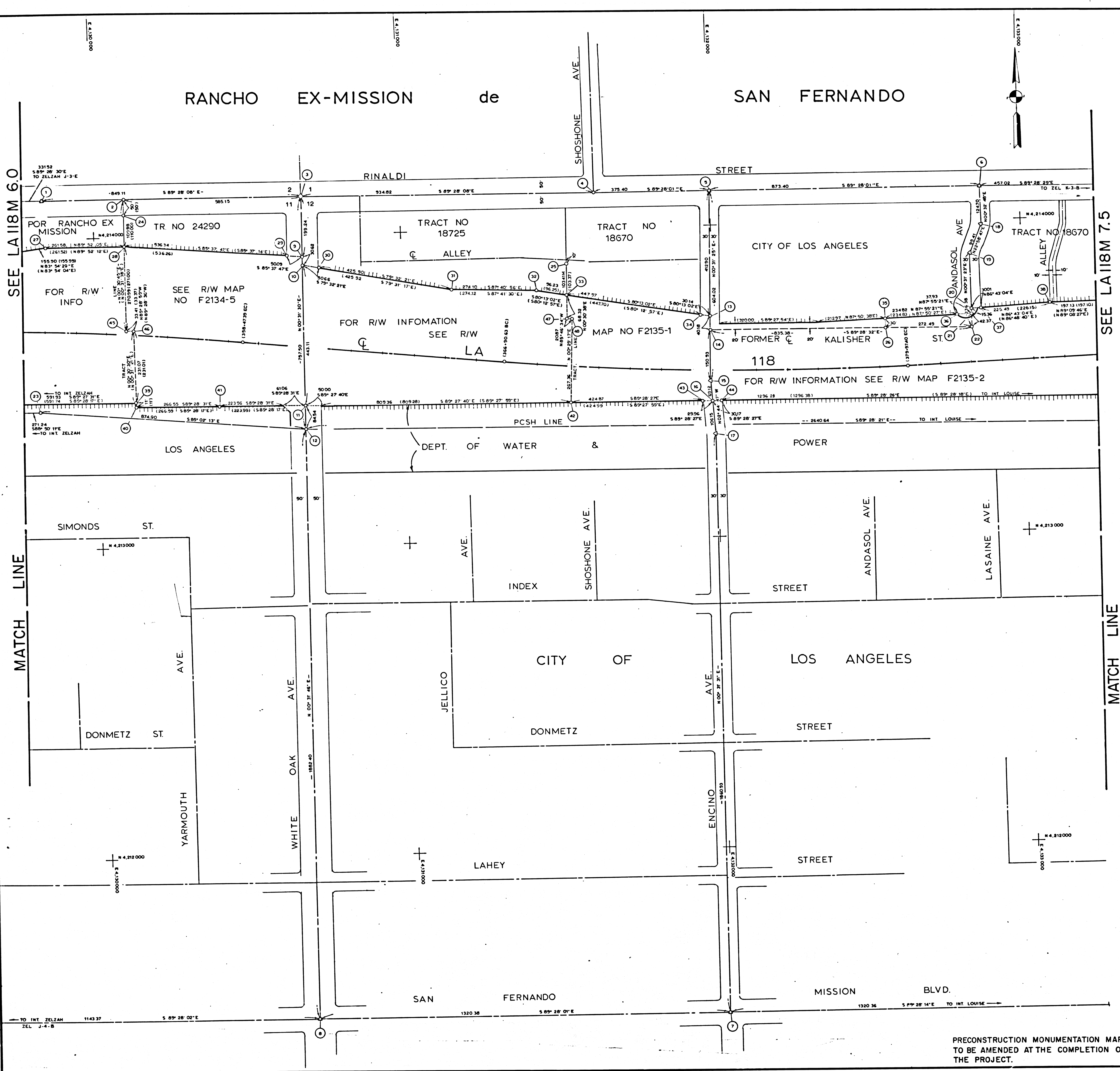
**MONUMENTATION MAP**  
MAP NO. LA 118 M-60

CALIFORNIA COORDINATE SYSTEM - ZONE 7

Surveyed by: J. LUDWIG  
Checked by: J. DUNCAN  
Project Engineer: J. LUDWIG  
Drawn by: J. LUDWIG  
Date: 10-18-77

F.M. 21745-3

RANCHO EX-MISSION de SAN FERNANDO



NO	NAME	DESCRIPTION	REFERENCE	REMARKS
1	ZEL J-3-D	FND 55M	SR 75-152-07	N4,214,137.17 E4,129,844.82
2		SET C-MAIL & TAG	SR 76-1061-09	N4,214,134.72 E4,130,108.28
3		FND 55M	SR 76-152-07	N4,211,477.23 E4,131,989.88
4		FND 4 PMS ON SHH RIM	SR 76-152-07	N4,211,488.51 E4,130,849.35
5		FND SPK & TIN	SR 76-1061-09	N4,215,830.07 E4,130,691.87
6		SET C-MAIL & TAG	SR 76-1061-09	N4,215,830.07 E4,130,691.87
7		SET C-MAIL & TAG	SR 76-1061-09	N4,215,830.07 E4,130,691.87
8		FND PK-MAIL	SR 76-1061-10	N4,215,458.56 E4,130,687.58
9		FND 50 SPK & BTY CAP	SR 76-1061-10	N4,215,371.83 E4,130,696.75
10		SET C-MAIL & TAG	SR 76-1061-05	N4,215,704.83 E4,132,000.09
11		FND C-MAIL	SR 76-1061-05	N4,215,664.08 E4,131,999.72
12		FND 55M	SR 76-1061-05	N4,215,515.15 E4,131,999.34
13		SET C-MAIL & TAG	SR 76-1061-06	N4,215,444.12 E4,132,006.74
14		FND 55M	SR 75-152-07	N4,215,338.09 E4,132,006.74
15		FND SPK & TIN	SR 74-318-03	N4,215,984.33 E4,132,876.03
16		FND SPK & TIN	SR 74-318-03	N4,215,984.33 E4,132,876.03
17		FND C-MAIL	SR 76-1061-04	N4,215,714.17 E4,132,835.62
18		SET C-MAIL & TAG	SR 76-1061-04	N4,215,688.81 E4,132,835.62
19		FND 2X2 & TACK	SR 76-1061-04	N4,215,656.43 E4,132,835.62
20		CH-16	SR 75-125-45	N4,215,447.22 E4,129,815.13
21		FND 2" IP	SR 76-1061-09	
22		FND MAIL & TAG RCE 8781	SR 76-1061-07	
23		SET C-MAIL & TAG	SR 76-1061-05	N4,215,658.93 E4,132,562.81
24		FND 2" IP W/WOOD PLUG	SR 76-1061-11	
25		SET 1" IP W/PLASTIC PLUG	SR 76-1061-09	
26			SR 76-1061-08	
27			SR 76-1061-07	
28			SR 76-1061-05	
29		SET 1" IP W/PLASTIC PLUG	SR 76-1061-04.05	
30			SR 76-1061-10	
31			SR 76-1061-07	
32			SR 76-1061-06	
33			SR 76-1061-09	
34		FND SPK & TIN	SR 76-1061-09	
35		FND 2" IP	SR 76-1061-07	

**LEGEND**

- ▲ SURVEY CONTROL POINTS
- POINTS OF SURVEY
- △ ANGLE POINTS
- ◇ SECTION CORNERS, RANCHO CORNERS
- ◊ RECORDED VALUE AS ESTABLISHED PREVIOUSLY
- ( ) VALUE ESTABLISHED BY DISTRICT 7 RIGHT OF WAY BRANCH

**NOTE**

- BEARINGS ARE BASED ON THE CALIFORNIA COORDINATE SYSTEM, DIVISION 8, SECTION 8809 OF THE 1953 PUBLIC RESOURCES CODE.
- DEPARTMENT OF TRANSPORTATION SURVEY INFORMATION IS AVAILABLE FROM THE SURVEY SECTION OF THE ENGINEERING SERVICES BRANCH, LOS ANGELES, CALIFORNIA.
- DEPARTMENT OF TRANSPORTATION RIGHT OF WAY INFORMATION IS AVAILABLE FROM THE RIGHT OF WAY BRANCH, LOS ANGELES, CALIFORNIA.
- STATIONING SHOWN ON THIS MAP IS FOR REFERENCE ONLY.

**IN LOS ANGELES COUNTY**  
BLK. 2113 MOD. 31

TO OBTAIN GROUND LEVEL DISTANCES, DIVIDE GRID DISTANCES SHOWN BY 333345880.

ZEL J-3-B N4,21410482 LOW & SF N4,2146503  
E4,13333422 E4,13330598

CONSTRUCTION CONTRACT NO. \_\_\_\_\_ COMPLETION DATE: \_\_\_\_\_

ORIGINAL SCALE: 1" = 100'  
100 200 300 400 500 FEET

**LOS ANGELES COUNTY FILE NO.**

STATE OF CALIFORNIA - DEPARTMENT OF TRANSPORTATION - SURVEYS

DISTRICT	COUNTY	ROUTE	POST MILES - TOTAL PROJECT	TRUCK MILES	NO. MILES	Chief of Party	Office Supervisor
07	LA	118	4.7 - 7.3	4	5	E.G. NELSON	L. ZEMMUS

**MONUMENTATION MAP**

MAP NO. LA118M-70

CHECKED BY: J. BIRD  
PROJECT ENGINEER: C. WESS  
DATE: 10-18-77

CALIFORNIA COORDINATE SYSTEM - ZONE 7

DATE: \_\_\_\_\_

PRECONSTRUCTION MONUMENTATION MAP TO BE AMENDED AT THE COMPLETION OF THE PROJECT.

F.M. 21745-4

