

NO	NAME	DESCRIPTION	REFERENCE	REMARKS
1		SO SPK. T&W	A 270.001-117	
2		4 PMS MH RIM	RIA 134A-6	
3		L&T	CE 14305-84	
4		SPK	CE 14305-84 A 173.001-154	
5		STD SURV. MON	18603-70	
6		RR SPK	NO REF	
7		L&T	A 173.003-14	
8				
9				
10				
11				
12		4 PMS MH RIM		
13		SPK	CE 14305-84 A 173.001-152	
14		SO SPK	A 270.001-117	
15		SPK T&W	NO REF	
16		CH K	A 270.001-117	
17		STD SURV MON	CCM 168.1	
18		4 PMS MH RIM	CCM 173.9	
19			CE 12946-2	
20		STD SURV MON	CE 12946-1	
21			CE 14305-84	
22		L&T	CE 14309-56	
23		2x2	9521-93	
24		STD SURV MON	18603-71	
25		SPK T&W	NO REF	
26		2x2		
27		C NL		
28		2x2	FB 14309-16	
29		L&T	NO REF	
30		4 PMS MH RIM	R 270.001-72	
31		2x2 DM 6"	FB 143.09-17A38	
32		L&T	NO REF	
33				
34				
35		SPK		
36			CE 14309-54	
37		2"IP	CE 14309-56	

MATCH LINE SEE MAP LA 134 M.O.S

- LEGEND**
- ▲ SURVEY CONTROL POINTS
 - POINTS OF SURVEY
 - △ ANGLE POINTS
 - SECTION CORNERS, RANCHO CORNERS
 - R RECORDED VALUE AS ESTABLISHED PREVIOUSLY
 - () VALUE ESTABLISHED BY DISTRICT 7 RIGHT OF WAY BRANCH

NOTE

- BEARINGS ARE BASED ON THE CALIFORNIA COORDINATE SYSTEM, DIVISION 8, SECTION 8009 OF THE 1953 PUBLIC RESOURCES CODE
- DEPARTMENT OF TRANSPORTATION SURVEY INFORMATION IS AVAILABLE FROM THE SURVEY SECTION OF THE ENGINEERING SERVICES BRANCH, LOS ANGELES, CALIFORNIA
- DEPARTMENT OF TRANSPORTATION RIGHT OF WAY INFORMATION IS AVAILABLE FROM THE RIGHT OF WAY BRANCH, LOS ANGELES, CALIFORNIA
- STATIONING SHOWN ON THIS MAP IS FOR REFERENCE ONLY

IN LOS ANGELES COUNTY
BLK. 1617 MOD. 83,84,95,86

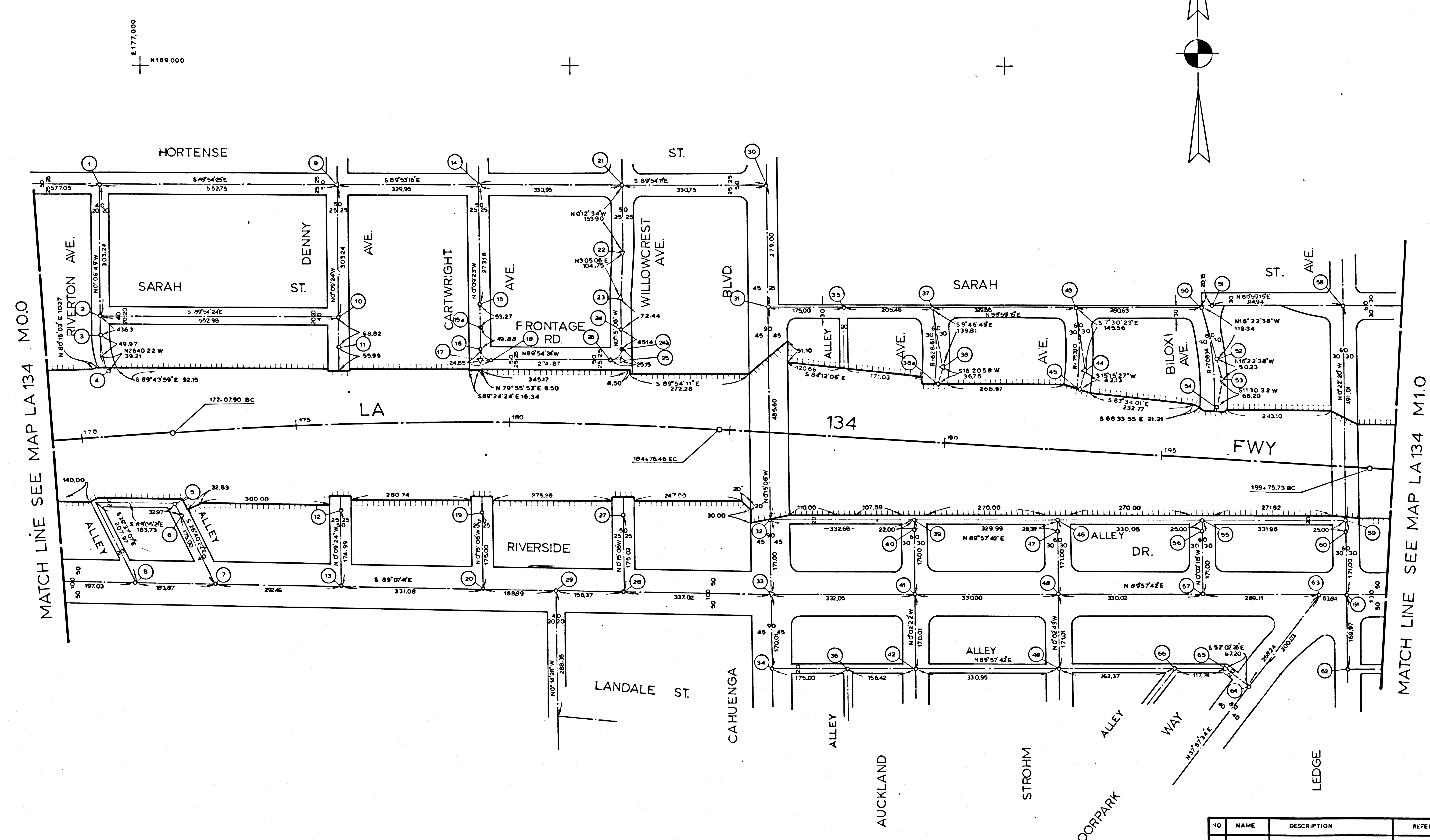
CONSTRUCTION CONTRACT NO. _____ COMPLETION DATE: _____

ORIGINAL SCALE: 1" = 100'

100 200 300 400 500 FEET

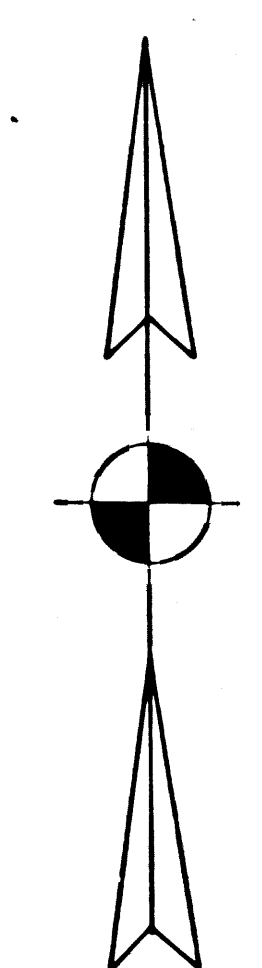
LOS ANGELES COUNTY FILE NO.

STATE OF CALIFORNIA DEPARTMENT OF TRANSPORTATION - SURVEYS	
DISTRICT COUNTY ROUTE POST MILES - TOTAL PROJECT SHEET NO. TOTAL SHEETS	Chief of Party Office Supervisor
DT LA 134 00 - 15 1 3	
MONUMENTATION MAP	
MAP NO. LA 134 M.O.S.	Checked by: O. FOLKLAUER
8-23-77	Checked by: [Signature]
Completion Date	Checked by: [Signature]
CALIFORNIA COORDINATE SYSTEM - ZONE 7	
Surf. Plan	
Rev. by	
Date	



MATCH LINE SEE MAP LA 134 M0.0

MATCH LINE SEE MAP LA 134 M1.0



E 117.000
N 169.000

E 116.000
N 169.000

E 117.000
N 167.000

E 119.000
N 167.000

NO	NAME	DESCRIPTION	REFERENCE	REMARKS
54		L & T	A 173.003-26	
55		S & W	CE 19810-21	
56		"	A 173.003-22	
57		L & T	A 173.003-22 CE 19810-11	
58		S & T	CE 19810-25	
59		"	" -22	
60		S & W	NO. REV.	
61		SPK	CE 19810-12	
62		S & W	" -13	
63		L & T	" -12	
64		"	"	
65		"	"	
66		"	" -10	

NO	NAME	DESCRIPTION	REFERENCE	REMARKS
1		2x2 B NL	LACE FB 14305-9	
2		S & W	A 173.003-15	
3		"	"	
4		L & T, HD WALL	A 173.003-15	
5		S & W	A 173.003-15	
6		"	"	
7		"	A 173.001-52	
8		L & T	LACE FB 9521-20	
9		S & W	A 173.001-52	
10		"	A 173.003-16	
11		"	"	
12		"	"	
13		L & T	LACE 9521-3 A 173.003-16	
14		4 PMS MH RIM	A 173.001-52	
15		"	A 173.003-16	
15A		S & W	"	
16		"	"	
17		4 PMS MH RIM	"	
18		S & W	"	
19		"	A 173.003-17	
20		L & T	LACE FB 9521-20	
21		4 PMS MH RIM	A 173.001-52	
22		S & T	"	
23		"	"	
24		"	A 173.003-16	
24A		S & W	A 173.003-16	
25		4 PMS MH RIM	"	
26		S & W	" -16	
27		S & W	" -18	
28		"	A 173.001-52	
29		"	LACE FB 9521-20	
30		"	A 173.001-52	
31		"	CE 19810-22	
32		L & T	CE 19810-19	
33		"	CE 19810-8	
34		L & T	"	
35		NOT SET	"	
36		2 IP	CE 19810-8	
37		S & W	CE 19810-23	
38		"	CE 19810-23 A 173.003-20	
38A		L & T	A 173.003-20	
39		"	"	
40		S & W	"	
41		SPK & LEAD	"	
42		S & T	CE 19810-9	
43		"	" -23	
44		SPK	" -23	
45		L & T	A 173.003-21	
46		S & W	"	
47		"	"	
48		SPK	CE 19810-11	
49		S & T	" -10	
50		"	A 173.003-22 CE 19810-22	
51		4 PMS MH RIM	CE 19810-24	
52		S & W	A 173.003-22	
53		2' IP DN 6"	"	

LEGEND
 △ SURVEY CONTROL POINTS
 ○ POINTS OF SURVEY
 ◊ ANGLE POINTS
 □ SECTION CORNERS, RANCHO CORNERS
 * RECORDED VALUE AS ESTABLISHED PREVIOUSLY
 () VALUE ESTABLISHED BY DISTRICT 7 RIGHT OF WAY BRANCH

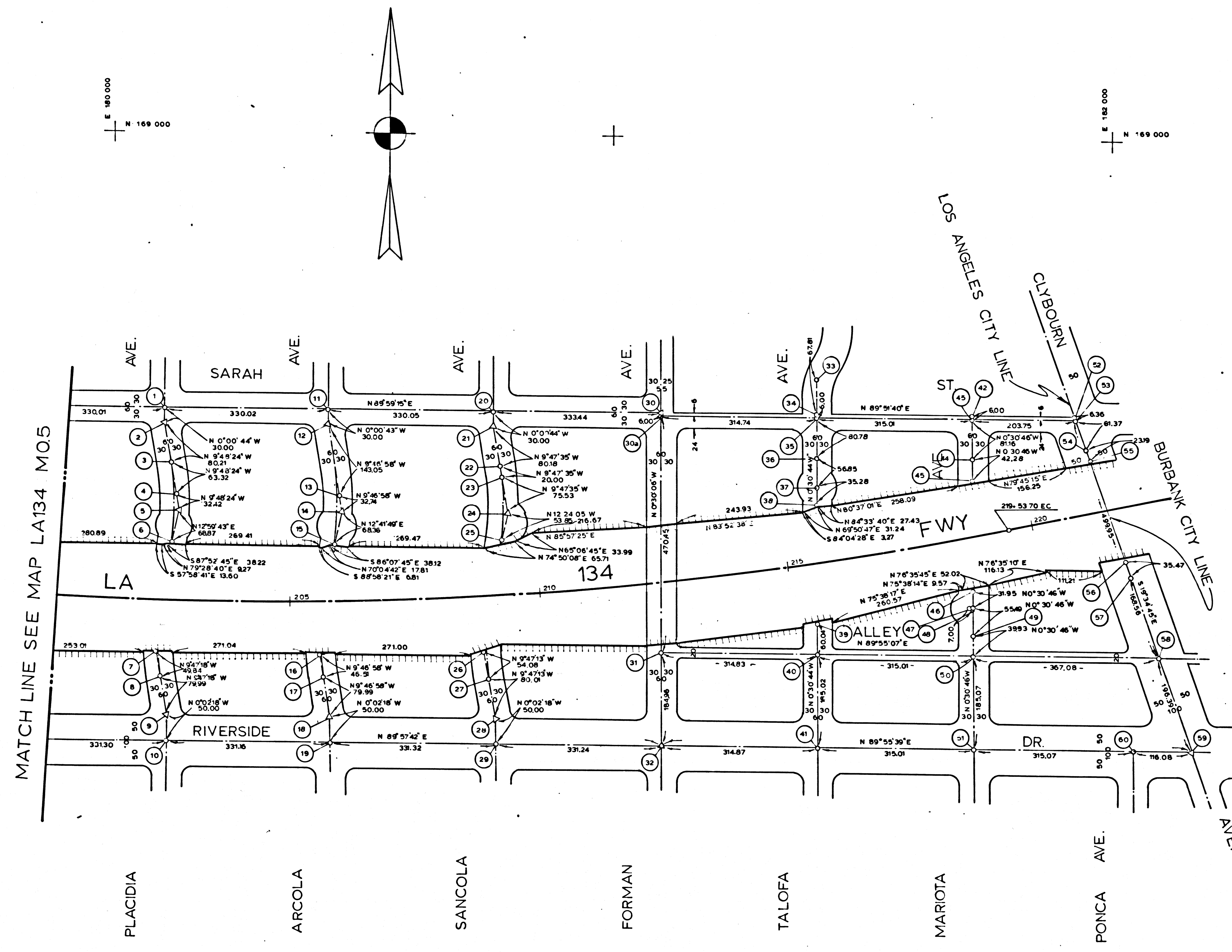
NOTE
 1. BEARINGS ARE BASED ON THE CALIFORNIA COORDINATE SYSTEM, DIVISION 8, SECTION 8809 OF THE 1953 PUBLIC RESOURCES CODE.
 2. DEPARTMENT OF TRANSPORTATION SURVEY INFORMATION IS AVAILABLE FROM THE SURVEY SECTION OF THE ENGINEERING SERVICES BRANCH, LOS ANGELES, CALIFORNIA.
 3. DEPARTMENT OF TRANSPORTATION RIGHT OF WAY INFORMATION IS AVAILABLE FROM THE RIGHT OF WAY BRANCH, LOS ANGELES, CALIFORNIA.
 4. STATIONING SHOWN ON THIS MAP IS FOR REFERENCE ONLY.

IN LOS ANGELES COUNTY
 BLK. 1617 MOD. 8788,89

CONSTRUCTION CONTRACT NO. _____ COMPLETION DATE: _____
 ORIGINAL SCALE: 1" = 100'
 100 200 300 400 500 FEET

LOS ANGELES COUNTY FILE NO. _____

STATE OF CALIFORNIA - DEPARTMENT OF TRANSPORTATION - SURVEYS			
DISTRICT	COUNTY	ROUTE	POST MILES - TOTAL PROJECT
07	LA	134	00 - 15
SHEET NO.		TOTAL SHEETS	DATE OF PARTY
00 - 15		2	Office Subst. - var
MONUMENTATION MAP		Calc. & Computed by	Checked by
MAP NO. LA134 M0.5		Project Engineer	Checked by
6-23-77		Date	Date
CALIFORNIA COORDINATE SYSTEM - ZONE 7		Date	Date



MATCH LINE SEE MAP LA134 M0.5

NO	NAME	DESCRIPTION	REFERENCE	REMARKS
56		L&T	A 173.003-28	
57		S&W		
58		2" IP ON 12" SET STAW	FB 19810-13 A 173.003-28	
59		L&T	FB 19810-71	
60		*		

NO	NAME	DESCRIPTION	REFERENCE	REMARKS
1		4 PMS MH RIM	FB 19810-26 A 173.003-23	
2		RR SPK	FB 19810-26	
3		S&T	A 173.003-23	
4		S&W	*	
5		*		
6		L&T	*	
7		*		
8		2x2	FB 19810-14,26	
9		S&W	A 173.003-23	
10		L&T	FB 19810-14 A 173.003-23	
11		4 PMS MH RIM	A 173.003-24	
12		2x2	FB 19810-26	
13		S&T	A 173.003-24	
14		S&W	*	
15		L&T	*	
16		*		
17		*		
18		S&W	FB 19810-15	
19		*	NO REF	
20		4 PMS MH RIM	FB 19810-27 A 173.003-25	
21		2x2	FB 19810-27	
22		2x2	FB 19810-30	
23		S&W	A 173.003-25	
24		*	FB 19810-30 A 173.003-25	
25		L&T	A 173.003-25	
26		*		
27		S&T	*	
28		NAIL	A 173.003-25	
29		SPK IN LEAD	NO REF	
30		S&T	A 173.002-46	
31		RR SPK	FB 19810-68	
32		STD SUR MON	FB 19810-7	
33		RR SPK	A 173.002-46 FB 19810-78	
34		S&W	A 173.003-26	
35		*	A 173.003-26	
36		*	A 173.003-26	
37		SPK	*	
38		L&T	*	
39		*		
40		SPK	*	
41		*	A 173.003-26 FB 19810-70	
42		S&W	A 173.002-46	
43		4 PMS MH RIM	A 173.003-27	
44		S&W	A 173.003-27	
45		L&T	A 173.003-27	
46		*	*	
47		S&W	*	
48		*	*	
49		*	*	
50		*	FB 19810-99	
51		L&T ON 1"	A 173.003-27 FB 19810-70	
52		2" IP	A 173.002-46	
53		RR SPK	A 173.002-46 A 173.003-28	
54		C HL	A 173.003-26	
55		L&T	A 173.003-28	

LEGEND

- ▲ SURVEY CONTROL POINTS
- POINTS OF SURVEY
- △ ANGLE POINTS
- ◇ SECTION CORNERS, RANCHO CORNERS
- R RECORDED VALUE AS ESTABLISHED PREVIOUSLY
- () VALUE ESTABLISHED BY DISTRICT 7 RIGHT OF WAY BRANCH

NOTE

- BEARINGS ARE BASED ON THE CALIFORNIA COORDINATE SYSTEM, DIVISION 8, SECTION 8809 OF THE 1953 PUBLIC RESOURCES CODE
- DEPARTMENT OF TRANSPORTATION SURVEY INFORMATION IS AVAILABLE FROM THE SURVEY SECTION OF THE ENGINEERING SERVICES BRANCH, LOS ANGELES, CALIFORNIA
- DEPARTMENT OF TRANSPORTATION RIGHT OF WAY INFORMATION IS AVAILABLE FROM THE RIGHT OF WAY BRANCH, LOS ANGELES, CALIFORNIA
- STATIONING SHOWN ON THIS MAP IS FOR REFERENCE ONLY

IN LOS ANGELES COUNTY
BLK. 1618 MOD. 8081

CONSTRUCTION CONTRACT NO. _____ COMPLETION DATE: _____

ORIGINAL SCALE: 1" = 100'
100 200 300 400 500 FEET

LOS ANGELES COUNTY FILE NO.

STATE OF CALIFORNIA - DEPARTMENT OF TRANSPORTATION - SURVEYS			
DISTRICT	COUNTY	ROUTE	POST MILES - TOTAL PROJECT
07	LA	134	0.0 - 1.5
Sheet	Sheet	Sheet	Sheet
3	3	3	3
Chair of Party	Office Supervisor		

MONUMENTATION MAP

MAP NO. LA 134 M1.0

6-23-77
Computation Date

CALIFORNIA COORDINATE SYSTEM - ZONE 7

Checked by: _____
Property Engineer: _____
D. FAULKNER

Date: _____