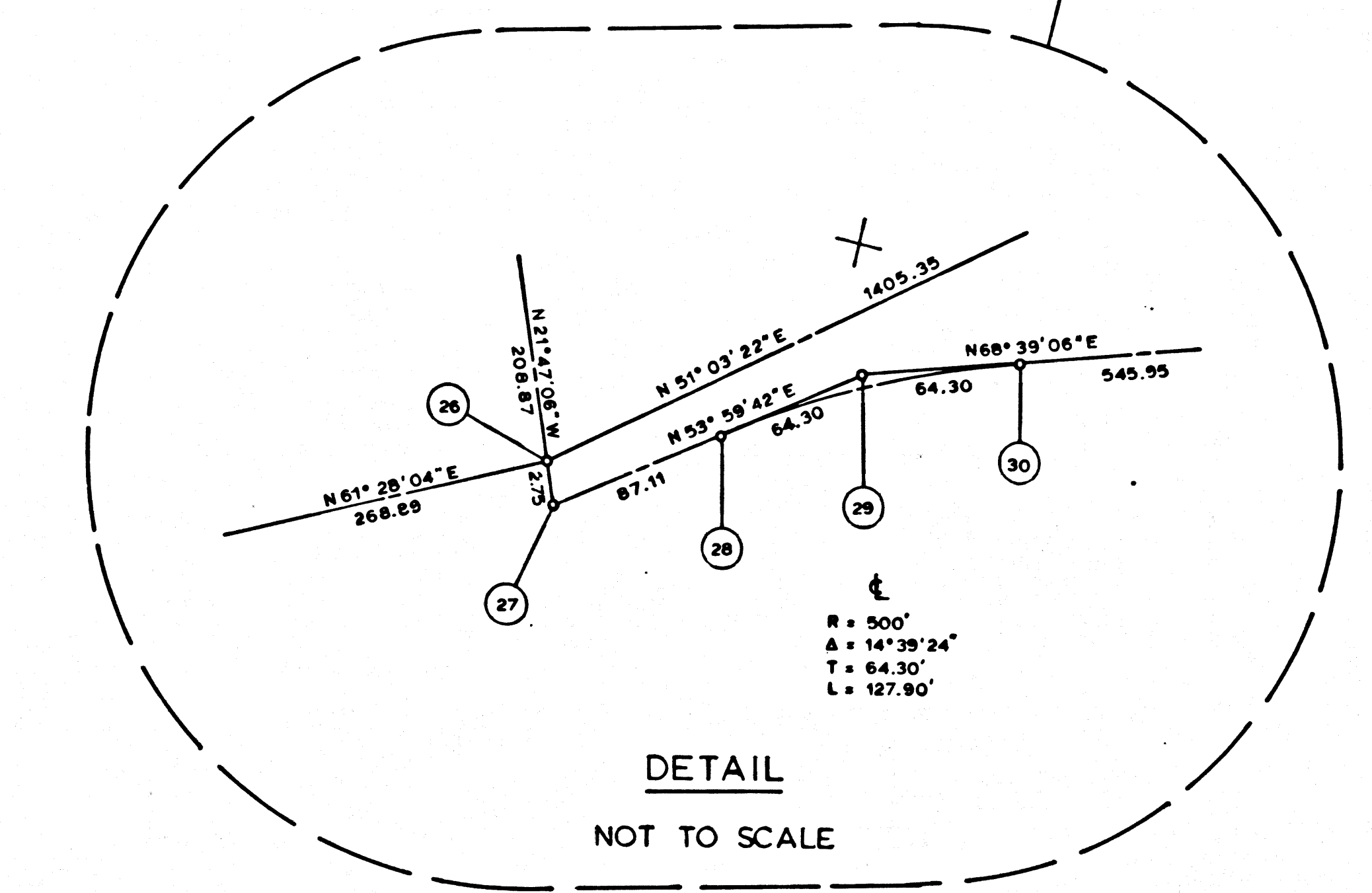
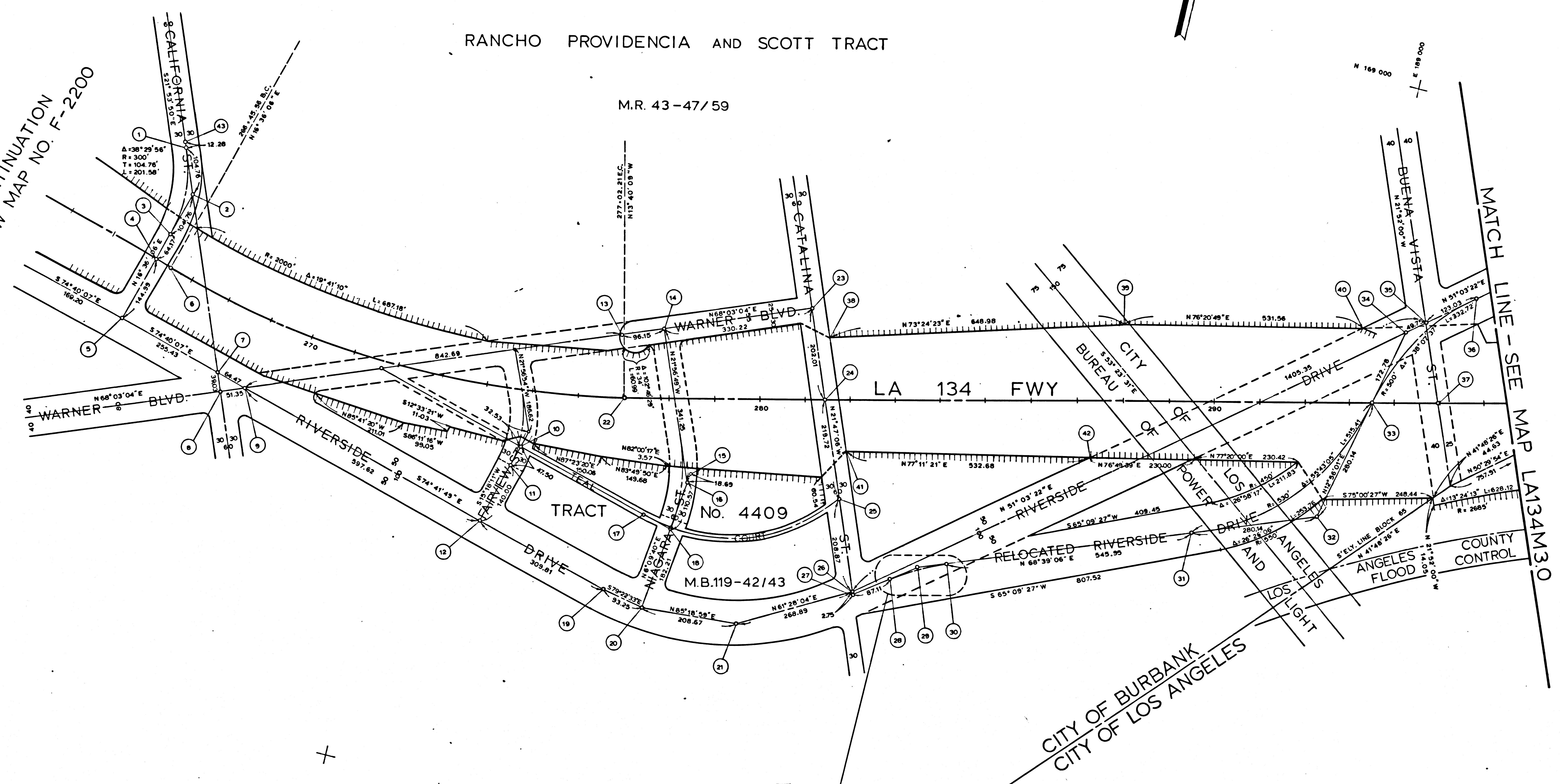


FOR CONTINUATION
SEE R/W MAP NO. F-2200



FOR R/W INFORMATION
SEE R/W MAP NO. F-2200

NO.	NAME	DESCRIPTION	REFERENCE	REMARKS
1	E.C.	NOTHING SET	A171.001-71	TIES PER REF.
2	P.I.	SET SPK & W.	A171.001-71	" " "
3	B.C.	SET L & T	A171.001-71	" " "
4	E INT.	SET L & T	A171.001-71	" " "
5	E INT.	SET SPK & T & W.	A171.001-71	" " "
6	B.C. & FWY			N 4,167,914.45 E 4,180,411.52
7	E INT.	SET SPK & T	A171.001-8	
8	E INT.	FD. SPK. & W.	A171.001-20	
9	E INT.	FD. SPK & W.	A171.001-20	
10	E INT.	FD. CONC. HAL SET SPK & W.	RLA134A-0039 A171.001-20	TIES PER REF.
11	B.C.	SET SPK. T. & W.	A171.001-72	
12	E INT.	FD. SPK. & T.	A171.001-11 A171.001-72	
13	E PROD.	SET L & T IN CURB	A171.001-74	
14	E INT.	FD. 4 P.M'S IN M.H.RIM	A171.001-11, -74	
15	E PROD.	SET L & T IN CURB	A171.001-73	
16	E ANG. PT.	NOTHING SET	A171.001-73	
17	B.C.	SET SPK & T	A171.001-20	
18	PO.S.T.	SET SPK. & W.	A171.001-20	
19	E ANG. PT.	SET SPK. & T.	A171.001-11	
20	E INT.	FD. SPK. & T.	A171.001-11	
21	E INT.	FD. SPK. & T.	A171.001-11	
22	E.C. & FWY			N 4,167,917.76 E 4,181,455.68
23	E INT.	FD. LACFD L & T	A171.001-11, -74	
24	POT. & FWY	SET 4 L & T STRADS.	A173.002-81	N 4,168,022.18 E 4,187,889.03
25	E INT.	SET SPK & W.	A171.001-20	
26	E INT.	FD. SPK & T	A171.001-11, -46	
27	E INT.	SET SPK. T. & W.	A171.001-46	TIES PER REF.
28	B.C.	SET SPK. T. & W.	A171.001-46	" " "
29	E P.I.	SET SPK. T. & W.	A171.001-46	" " "
30	E.C.	SET SPK. T. & W.	A171.001-46	" " "
31	B.C.	SET SPK. T. & W.	A171.001-47	" " "
32	E P.I.	SET 2x2 & T.	A171.001-47	" " "
33	POT. & FWY	SET SPK. T. & W.	A171.001-47	N 4,169,307.88 E 4,189,059.75
34	E P.I.	SET SPK. T. & W.	A171.001-48	TIES PER REF.
35	E INT.	FD. SPK.	CITY OF BURBANK P.B. 45-3	ADD'L REFERENCE A171.001-48
36	E.C.	SET SPK. T. & W.	A171.001-48	TIES PER REF.
37	POT. & FWY			N 4,168,342.76 E 4,189,253.23
38	R/W COR.	SET 2x2 & T.	R173.001-29	
39	R/W COR.	SET 2x2 & T.	R173.001-29	
40	R/W COR.	SET 2x2 & T.	R173.001-29	
41	R/W COR.	SET 2x2 & T.	R173.001-29	
42	R/W COR.	SET 2x2 & T.	R173.001-29	
43	E P.O.T.	SET SPK. T. & W.	A171.001-71	
44				
45				
46				
47				
48				
49				
50				
51				
52				
53				
54				
55				

LEGEND

- △ SURVEY CONTROL POINTS
- POINTS OF SURVEY
- △ ANGLE POINTS
- ◇ SECTION CORNERS, RANCHO CORNERS
- RECORDED VALUE AS ESTABLISHED PREVIOUSLY
- () VALUE ESTABLISHED BY DISTRICT 7 RIGHT OF WAY BRANCH

NOTE

- BEARINGS ARE BASED ON THE CALIFORNIA COORDINATE SYSTEM, DIVISION 8, SECTION 8809 OF THE 1953 PUBLIC RESOURCES CODE.
- DEPARTMENT OF TRANSPORTATION SURVEY INFORMATION IS AVAILABLE FROM THE SURVEY SECTION OF THE ENGINEERING SERVICES BRANCH, LOS ANGELES, CALIFORNIA.
- DEPARTMENT OF TRANSPORTATION RIGHT OF WAY INFORMATION IS AVAILABLE FROM THE RIGHT OF WAY BRANCH, LOS ANGELES, CALIFORNIA.
- STATIONING SHOWN ON THIS MAP IS FOR REFERENCE ONLY.

IN LOS ANGELES COUNTY
BLK. 1618 MOD. 67, 76, 77, 78, 86, 87, 88, 89

CONSTRUCTION CONTRACT NO. 61-7V13C38 COMPLETION DATE: JULY 1962

ORIGINAL SCALE: 1" = 100'
100 0 4 2 0 100 200 300 400 500 FEET

LOS ANGELES COUNTY FILE NO.

STATE OF CALIFORNIA		DEPARTMENT OF TRANSPORTATION - SURVEYS	
DISTRICT	COUNTY	ROUTE	POST MILES - TOTAL PROJECT
07	LA	134	2.7 / 5.1
SHEET	TOTAL SHEETS	CHIEF OF PARTY	OFFICE SUPERVISOR
1	5		

MONUMENTATION MAP

MAP NO. LA134 M25

JUNE 10, 1977
Completion Date

CALIFORNIA COORDINATE SYSTEM - ZONE 7

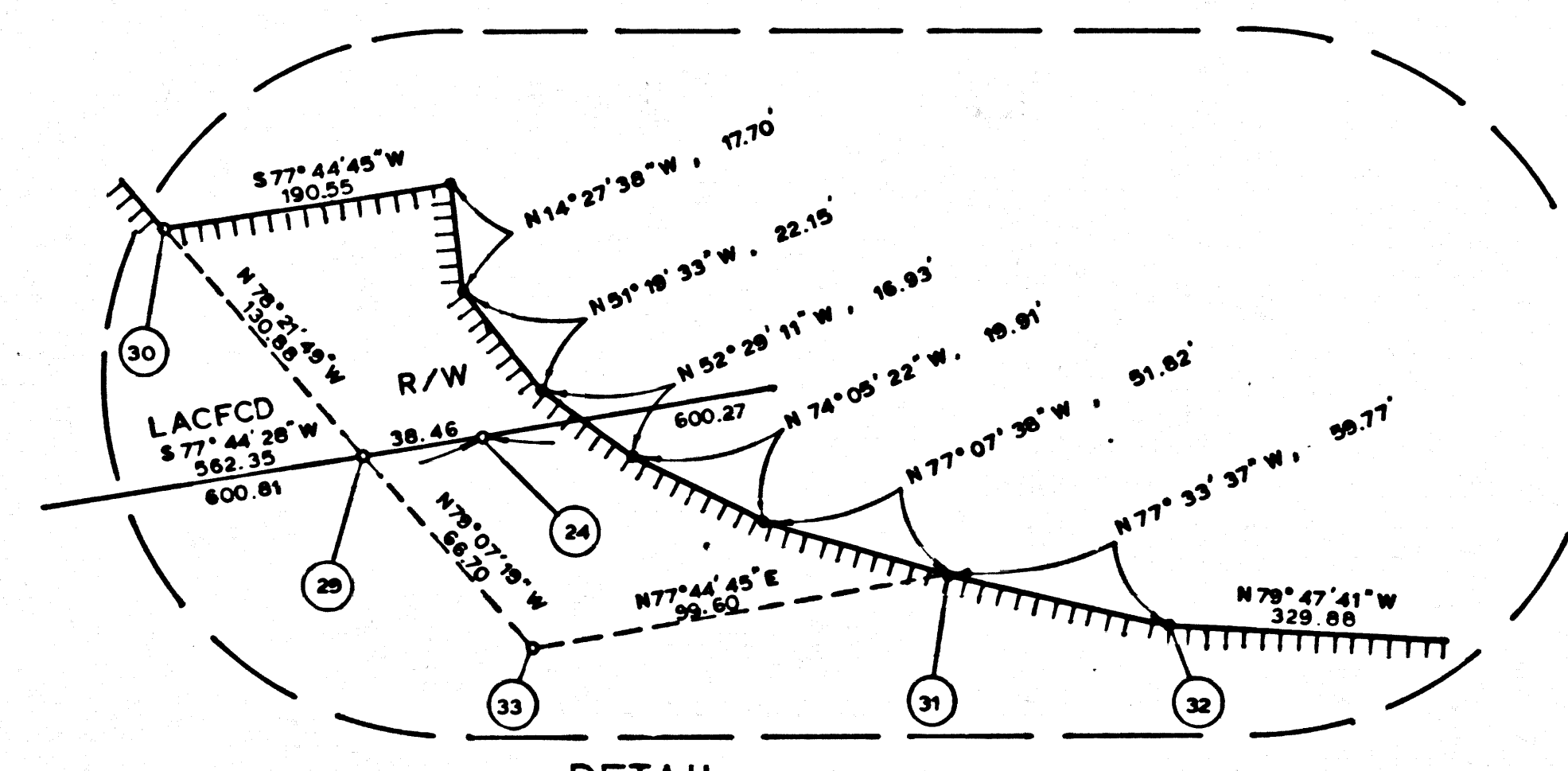
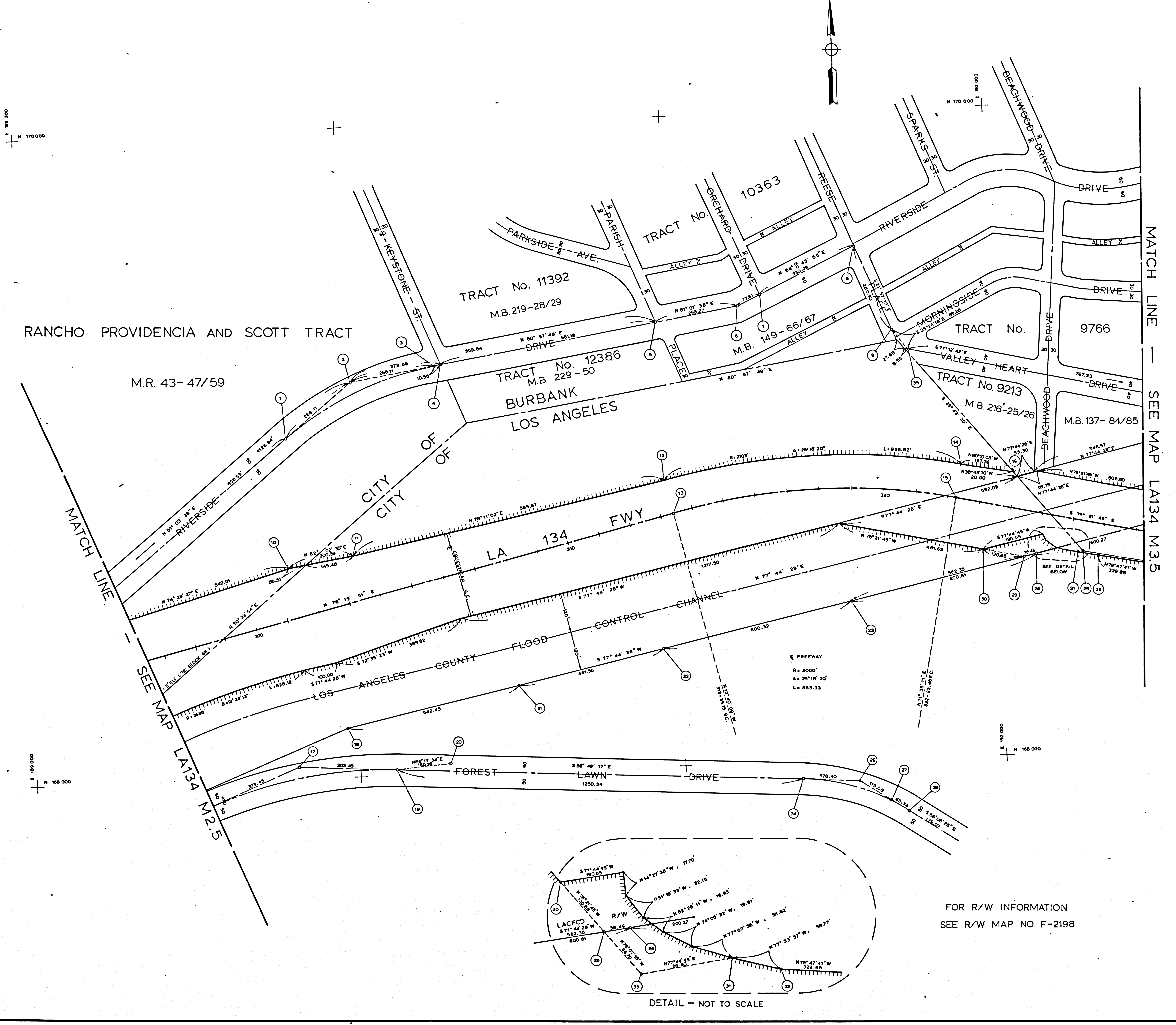
Checked by: [Signature]
Project Engineer: [Signature]
Checked by: [Signature]
Project Engineer: [Signature]

FM 21743-1

N 170 000

N 168 000

RANCHO PROVIDENCIA AND SCOTT TRACT
M.R. 43-47/59



DETAIL - NOT TO SCALE

FOR R/W INFORMATION
SEE R/W MAP NO. F-2198

MATCH LINE - SEE MAP LA134 M3.5

NO	NAME	DESCRIPTION	REFERENCE	REMARKS
1	B.C. E	FD. SQ. NO. SPK.	A171.001-48	
2	PL. E	FD. 2x2 & T.	A171.001-12, -16	
3	E.C. E	NOTHING FD. OR SET		
4	E INT.	FD. SPK. & T.	A171.001-12	
5	E INT.	FD. SPK. & T.	A171.001-12	
6	E ANG. PT.	FD. SPK. & T.	A171.001-12	
7	E INT.	FD. SPK. & T.	A171.001-12	
8	E INT.	FD. SPK. & T.	A171.001-12	
9	E P.O.T.	FD. SPK. & T.	A171.001-13	
10	R/W COR.	SET 2x2 & T.	R173.001-30	
11	R/W COR.	SET 2x2 & T.	R173.001-30	
12	R/W B.C.	SET 2\"/>		

LEGEND

- ▲ SURVEY CONTROL POINTS
- POINTS OF SURVEY
- △ ANGLE POINTS
- ◇ SECTION CORNERS, RANCHO CORNERS
- RECORDED VALUE AS ESTABLISHED PREVIOUSLY
- () VALUE ESTABLISHED BY DISTRICT 7 RIGHT OF WAY BRANCH

NOTE

- BEARINGS ARE BASED ON THE CALIFORNIA COORDINATE SYSTEM, DIVISION 8, SECTION 8809 OF THE 1953 PUBLIC RESOURCES CODE
- DEPARTMENT OF TRANSPORTATION SURVEY INFORMATION IS AVAILABLE FROM THE SURVEY SECTION OF THE ENGINEERING SERVICES BRANCH, LOS ANGELES, CALIFORNIA
- DEPARTMENT OF TRANSPORTATION RIGHT OF WAY INFORMATION IS AVAILABLE FROM THE RIGHT OF WAY BRANCH, LOS ANGELES, CALIFORNIA
- STATIONING SHOWN ON THIS MAP IS FOR REFERENCE ONLY

IN LOS ANGELES COUNTY
BLK. 1618 MOD. 89
1619 80, 81, 82, 83

CONSTRUCTION CONTRACT NO. 61-7V13C38 COMPLETION DATE: JULY 1982

ORIGINAL SCALE: 1" = 100'
100 0 50 2 0 100 200 300 400 500 FEET

LOS ANGELES COUNTY FILE NO.

STATE OF CALIFORNIA - DEPARTMENT OF TRANSPORTATION - SURVEYS

DISTRICT	COUNTY	ROUTE	POST MILES - TOTAL PROJECT	SHEET NO.	TOTAL SHEETS	Chief of Party	Office Supervisor
07	LA	134	3.7 - 5.1	3	5		

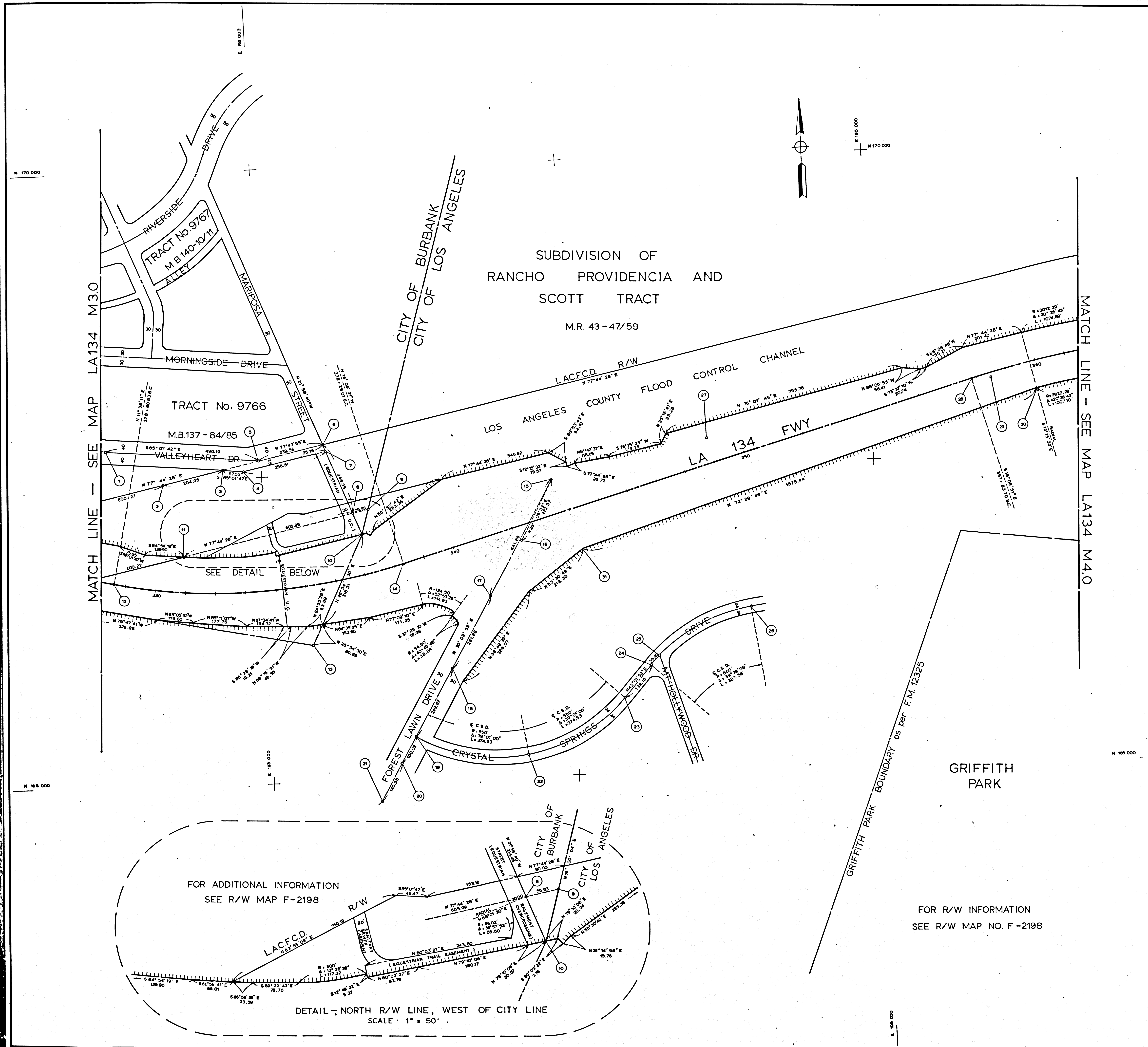
MONUMENTATION MAP

MAP NO. LA134 M3.0

JUNE 7, 1972
Completion Date

CALIFORNIA COORDINATE SYSTEM - ZONE 7

FM 21748-2



NO	NAME	DESCRIPTION	REFERENCE	REMARKS
1	ANG. PT.	FD. SPK. & T.	A171.001-13	
2	P.O.T.	FD. LACFCD BR. CAP. MON.	CCM 173.8	LACFCD NOTES FC. 1392-156
3	P.O.T.	" " " "	" " "	FC. 1392-157
4	ANG. PT.	" " " "	" " "	FC. 1392-158
5	ANG. PT.	FD. SPK. & T.	A171.001-13	
6	INT.	FD. SPK. & T.	A171.001-13	
7	P.O.T.	FD. LACFCD BR. CAP. MON.	CCM 173.8	
8	P.O.T.	" " " "	" " "	
9	INT. FC. RW	" " " "	" " "	LACFCD NOTES FC. 1392-157
10	ANG. PT.	" " " "	" " "	" " "
11	P.O.T.	" " " "	" " "	" " "
12	BC. & FWY	" " " "	" " "	N4.188.664.95 E4.182.484.18
13	ANG. PT.	SET 2x2 & T	R173.001-31	
14	EC & FWY	" " " "	" " "	N4.188.702.37 E4.183.452.48
15	PI.	FD. BT. SPK.	CEFB 17706-35	DESTROYED DURING CONSTRUCTION
16	BURBANK R-6-A	LACE STD. SURVEY MON.	CEFB 17706-35	DESTROYED DURING CONSTRUCTION
17	BC.	FD. BT. SPK.	CCM 173.8	" " "
18	ROT.	FD. SPK. & T.	CEFB 17706-35	" " "
19	INT.	SET SPK. T. & W.	A173.003-32	
20	EC.	FD. SPK. & T.	A173.003-32	
21	PI.	SET SPK. & W.	A173.003-32	
22	M.P.C.	SET SPK. & W.	A173.003-33	
23	EC.	" " " "	" " "	
24	INT. (P.O.C.)	" " " "	" " "	
25	EC.	" " " "	" " "	
26	EC.	FD. SPK. & T.	" " "	
27	BURBANK L-6-A	LACE STD. TRAV. MON.	CEFB 10653-152	DESTROYED DURING CONSTRUCTION
28	BC. & FWY	" " " "	" " "	N4.188.244.72 E4.185.332.43
29	BURBANK L-6-B	LACE STD. TRAV. MON.	CEFB 10653-152	DESTROYED DURING CONSTRUCTION
30	R/W COR	SET 2x2 & T	R173.001-13	
31	R/W COR	SET 2x2 & T.	R173.001-13	
32				
33				
34				
35				
36				
37				
38				
39				
40				
41				
42				
43				
44				
45				
46				
47				
48				
49				
50				
51				
52				
53				
54				
55				

LEGEND

- ▲ SURVEY CONTROL POINTS
- POINTS OF SURVEY
- △ ANGLE POINTS
- ◇ SECTION CORNERS, RANCHO CORNERS
- RECORDED VALUE AS ESTABLISHED PREVIOUSLY
- () VALUE ESTABLISHED BY DISTRICT 7 RIGHT OF WAY BRANCH

NOTE

- BEARINGS ARE BASED ON THE CALIFORNIA COORDINATE SYSTEM, DIVISION 8, SECTION 8809 OF THE 1953 PUBLIC RESOURCES CODE
- DEPARTMENT OF TRANSPORTATION SURVEY INFORMATION IS AVAILABLE FROM THE SURVEY SECTION OF THE ENGINEERING SERVICES BRANCH, LOS ANGELES, CALIFORNIA
- DEPARTMENT OF TRANSPORTATION RIGHT OF WAY INFORMATION IS AVAILABLE FROM THE RIGHT OF WAY BRANCH, LOS ANGELES, CALIFORNIA
- STATIONING SHOWN ON THIS MAP IS FOR REFERENCE ONLY

IN LOS ANGELES COUNTY
BLK. 1619 MOD. 72, 73, 82, 83, 93

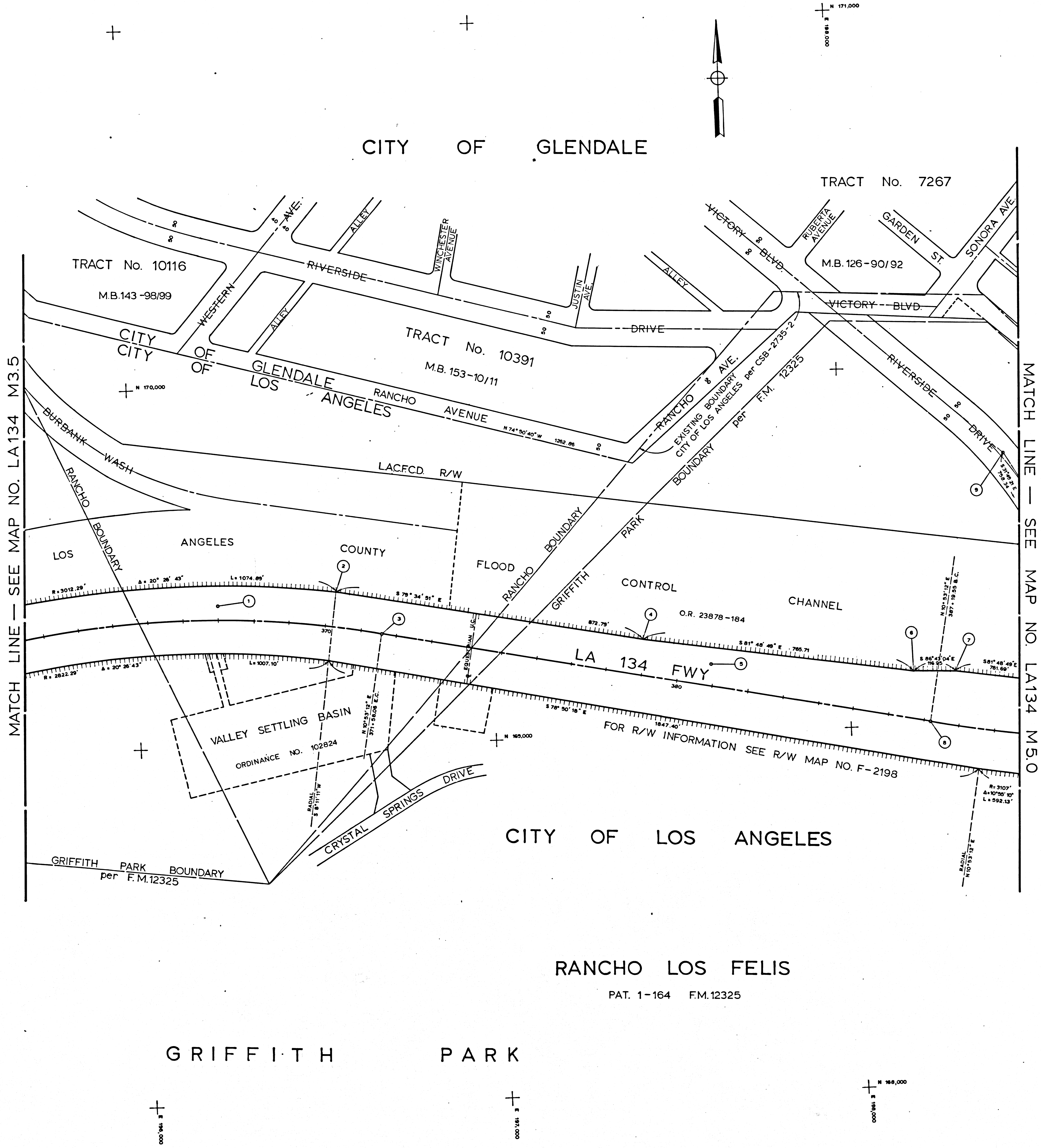
CONSTRUCTION CONTRACT NO. 61-7V13C39 COMPLETION DATE: JULY 1962

ORIGINAL SCALE: 1" = 100'
100 200 300 400 500 FEET

LOS ANGELES COUNTY FILE NO.

STATE OF CALIFORNIA DEPARTMENT OF TRANSPORTATION - SURVEYS			
DISTRICT	COUNTY	ROUTE	POST MILES - TOTAL PROJECT
07	LA	134	2.7 - 5.1
Sheet	Project	Sheet	Sheet
3	5		
Chief of Party	Office Supervisor		
MONUMENTATION MAP			
MAP NO. LA134 M3.5			
JUNE 15, 1977 Comparison Date			
CALIFORNIA COORDINATE SYSTEM - ZONE 7			
Surv. Map	Drawn by	Checked by	Date
		C. MATHEWS	

FM 21743-3



NO	NAME	DESCRIPTION	REFERENCE	REMARKS
1	BURBANK L.C.S.C.	L.A.C.E. STD. TRAV. MON.	CEFB 10653-151	DESTROYED DURING CONSTRUCTION
2	R/W COR	SET 2 X 2 & T.	A 173.002-53	
3	E.C. FWT			N 4, 195, 308.75 E 4, 195, 692.70
4	R/W COR	FD. LACFCD BR. CAP MON.	LACFCD FC 1982-124 A 173.002-53	COMMON R/W PT.
5	GLENDALE A-B	L.A.C.E. STD. TRAV. MON.	CEFB 10653-148	DESTROYED DURING CONSTRUCTION
6	R/W COR	FD. LACFCD BR. CAP MON.	LACFCD FC 1982-123 A 173.002-52	COMMON R/W PT.
7	R/W COR	SET CHS. X	A 173.002-52	
8	B.C. FWT			N 4, 195, 071.84 E 4, 195, 224.08
9	RI E	FD. SPK.	A 173.002-76	
10				
11				
12				
13				
14				
15				
16				
17				
18				
19				
20				
21				
22				
23				
24				
25				
26				
27				
28				
29				
30				
31				
32				
33				
34				
35				
36				
37				
38				
39				
40				
41				
42				
43				
44				
45				
46				
47				
48				
49				
50				
51				
52				
53				
54				
55				

LEGEND

- △ SURVEY CONTROL POINTS
- POINTS OF SURVEY
- ◇ ANGLE POINTS
- ◇ SECTION CORNERS, RANCHO CORNERS
- ⊕ RECORDED VALUE AS ESTABLISHED PREVIOUSLY
- () VALUE ESTABLISHED BY DISTRICT RIGHT OF WAY BRANCH

NOTE

- BEARINGS ARE BASED ON THE CALIFORNIA COORDINATE SYSTEM, DIVISION 8, SECTION 8809 OF THE 1953 PUBLIC RESOURCES CODE.
- DEPARTMENT OF TRANSPORTATION SURVEY INFORMATION IS AVAILABLE FROM THE SURVEY SECTION OF THE ENGINEERING SERVICES BRANCH, LOS ANGELES, CALIFORNIA.
- DEPARTMENT OF TRANSPORTATION RIGHT OF WAY INFORMATION IS AVAILABLE FROM THE RIGHT OF WAY BRANCH, LOS ANGELES, CALIFORNIA.
- STATIONING SHOWN ON THIS MAP IS FOR REFERENCE ONLY.

IN LOS ANGELES COUNTY
BLK. 1619 MOD. 96.97.98

CONSTRUCTION CONTRACT NO. 61-7V13C38 COMPLETION DATE: JULY 1962

ORIGINAL SCALE: 1" = 100'

100 200 300 400 500 FEET

LOS ANGELES COUNTY FILE NO.

STATE OF CALIFORNIA DEPARTMENT OF TRANSPORTATION - SURVEYS				
DISTRICT	COUNTY	ROUTE	POST MILES - TOTAL PROJECT	SHEET NO. / TOTAL SHEETS
07	L.A.	134	27-5.1	4 / 5

MONUMENTATION MAP

MAP NO. LA134 M45

JUNE 21, 1977
Completion Date

CALIFORNIA COORDINATE SYSTEM - ZONE 7

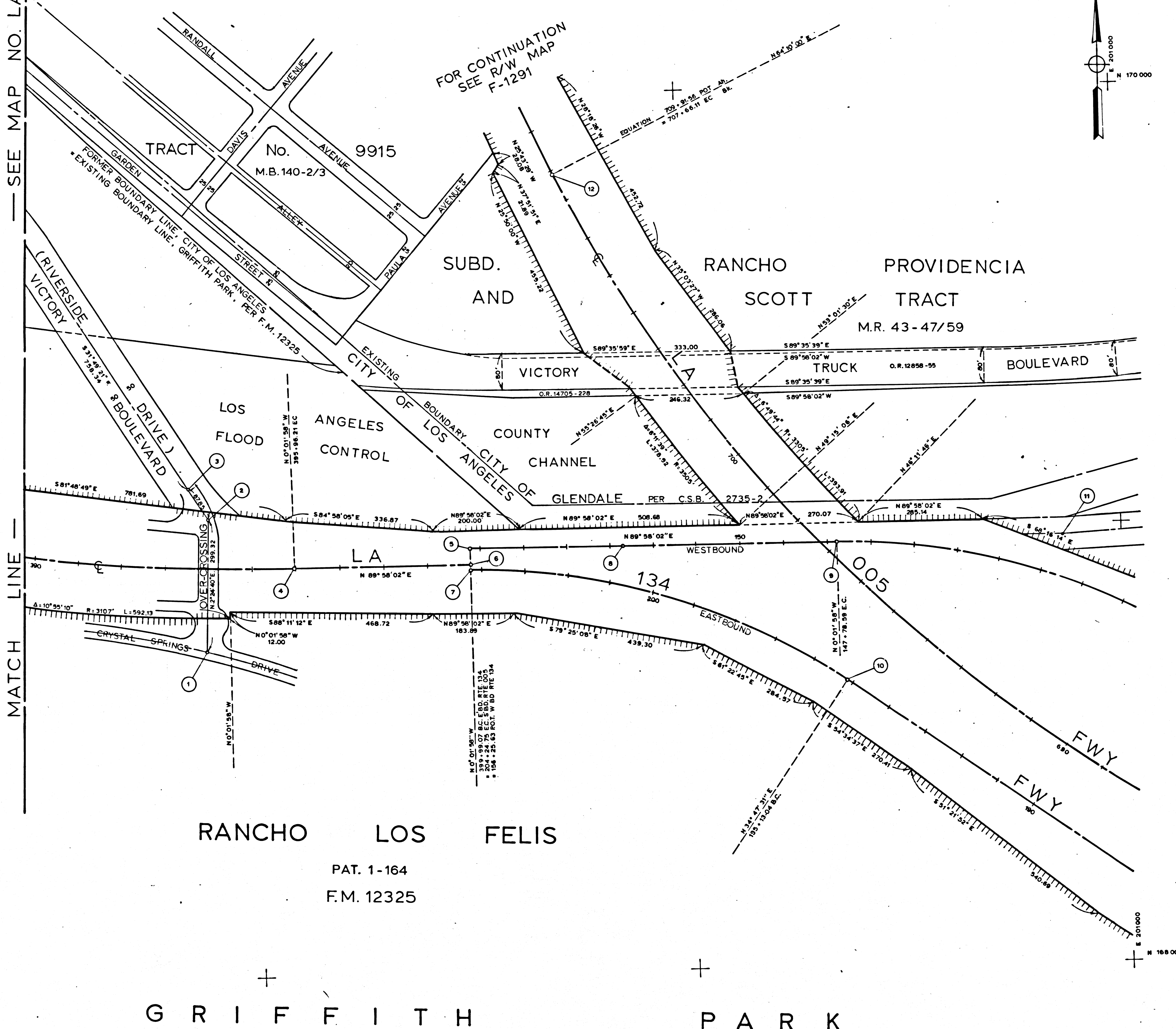
Checked by: C. MATHEWS
Project Engineer: C. MATHEWS
Checked by: [Signature]
Project Engineer: [Signature]

FM 21748-4

SEE MAP NO. LA134 M4.5

E 188 000
N 170 000

E 188 000
N 168 000



FOR CONTINUATION
SEE R/W MAP
F-1291

FOR CONTINUATION SEE R/W MAP F-1290

RANCHO LOS FELIS
PAT. 1-164
F.M. 12325

G R I F F I T H P A R K

FOR R/W INFORMATION
SEE R/W MAP NO. F-2198

NO	NAME	DESCRIPTION	REFERENCE	REMARKS
1	INT	SET SPK. T. & W.	A173.002-76	
2	P.I.	SET SPK. T. & W.	A173.002-76	
3	B.C.	SET SPK. T. & W.	A173.002-76	
4	E.C. F.W.	NOTHING SET	TIES PER A173.002-76	N4,168,829.00 E4,199,009.20
5	POZ. W.B.	" "	" "	N4,168,864.38 E4,199,498.09
6	POZ. F.W.	" "	" "	N4,168,809.38 E4,199,406.71
7	E.C. E.B.	" "	" "	N4,168,918.33 E4,199,498.72
8	POZ. W.B.	" "	" "	" "
9	E.C. W.B.	FD. DIV. OF HWYS. MON.	" "	" "
10	B.C. E.B.	NOTHING SET	A 22 003-19	N4,168,650.18 E4,200,355.47
11	POZ. E.	FD. SPK.	CEFB 12308-24	" "
12	E.C. F.W.	FD. SPK.	" "	" "
13				
14				
15				
16				
17				
18				
19				
20				
21				
22				
23				
24				
25				
26				
27				
28				
29				
30				
31				
32				
33				
34				
35				
36				
37				
38				
39				
40				
41				
42				
43				
44				
45				
46				
47				
48				
49				
50				
51				
52				
53				
54				
55				

LEGEND

- ▲ SURVEY CONTROL POINTS
- POINTS OF SURVEY
- △ ANGLE POINTS
- SECTION CORNERS, RANCHO CORNERS
- ◇ RECORDED VALUE AS ESTABLISHED PREVIOUSLY
- () VALUE ESTABLISHED BY DISTRICT 7 RIGHT OF WAY BRANCH

NOTE

- BEARINGS ARE BASED ON THE CALIFORNIA COORDINATE SYSTEM, DIVISION 8, SECTION 8809 OF THE 1953 PUBLIC RESOURCES CODE.
- DEPARTMENT OF TRANSPORTATION SURVEY INFORMATION IS AVAILABLE FROM THE SURVEY SECTION OF THE ENGINEERING SERVICES BRANCH, LOS ANGELES, CALIFORNIA.
- DEPARTMENT OF TRANSPORTATION RIGHT OF WAY INFORMATION IS AVAILABLE FROM THE RIGHT OF WAY BRANCH, LOS ANGELES, CALIFORNIA.
- STATIONING SHOWN ON THIS MAP IS FOR REFERENCE ONLY.

IN LOS ANGELES COUNTY

BLK. 1619 MOD. 89,98,99
1620 80,90

CONSTRUCTION CONTRACT NO. 61-7V13C38 COMPLETION DATE: JULY 1962

ORIGINAL SCALE: 1" = 100'

100 200 300 400 500 FEET

LOS ANGELES COUNTY FILE NO.

STATE OF CALIFORNIA - DEPARTMENT OF TRANSPORTATION - SURVEYS

DISTRICT	COUNTY	ROUTE	POST MILES - TOTAL PROJECT	SHEET	TOTAL SHEETS	Chart of Party	Office Supervisor
07	LA	134	27-51	5	5		

MONUMENTATION MAP

MAP NO. LA134 M5.0

JUNE 23, 1977
Completion Date

CALIFORNIA COORDINATE SYSTEM - ZONE 7

Project Engineer: C. MATHEWS
Checked by: [Signature]

F.M. 21743-5