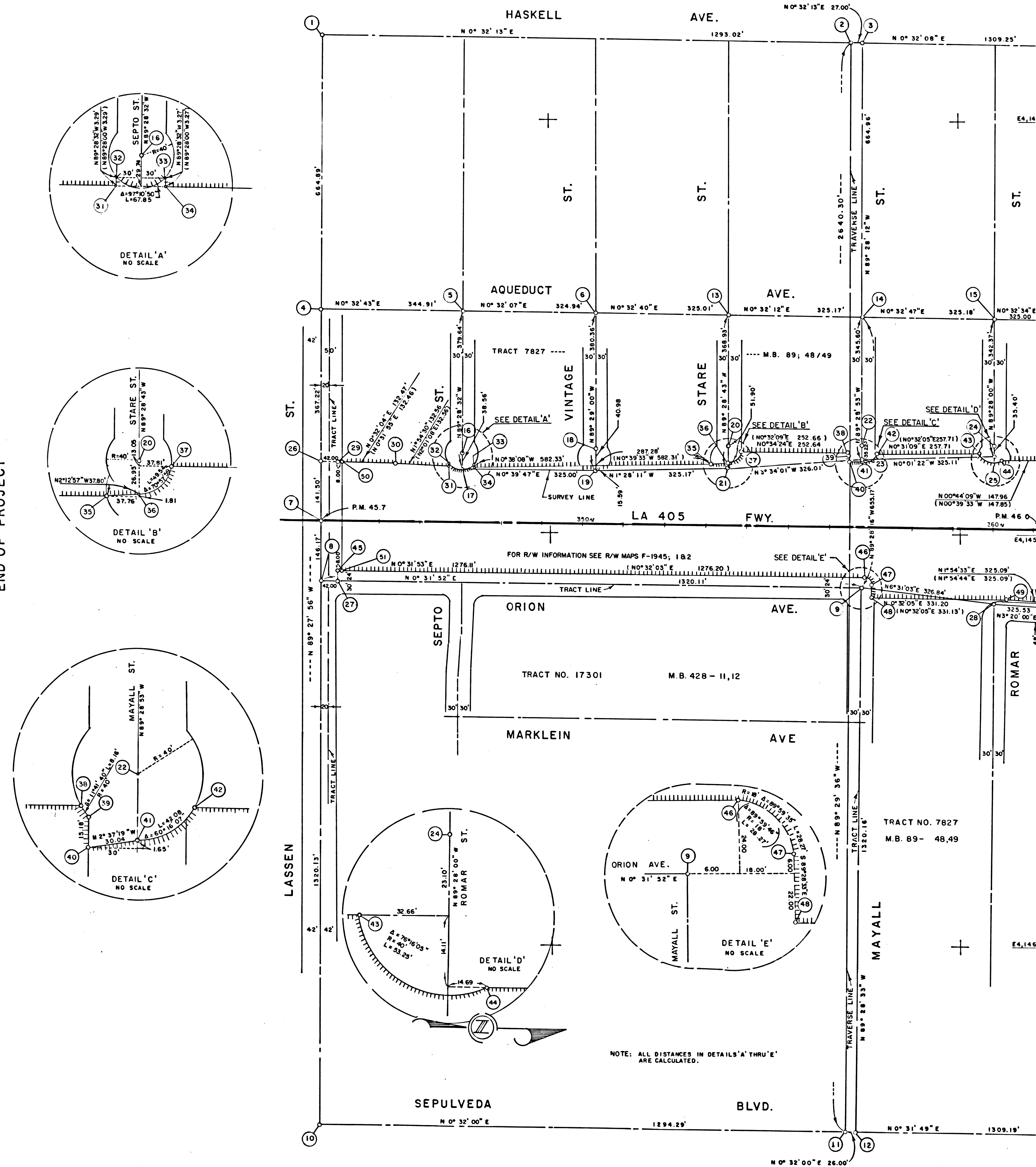


LA 402 M-42-2 (WORK)

LA 402 M-42-2 (WORK)

FOR ADDITIONAL INFORMATION SEE CCM 16750
(COORDINATE VALUES PRIOR TO THE 1971 EARTHQUAKE)

END OF PROJECT



VALUES IN PARENTHESIS WERE ESTABLISHED PRIOR TO THE 1971 EARTHQUAKE. ALL OTHER VALUES ARE BASED ON LOS ANGELES GEODETIC CONTROL.

NO.	NAME	DESCRIPTION	REFERENCE	REMARKS
1		FD SPK.	ALA405K-22	N4,203,447.77 E4,143,728.33
2	GRID PT. 13	FD SPK. T. & W.	" -37	N4,204,740.74 E4,143,810.45
3		FD SPK. & T.	GLA405K-3	N4,204,747.73 E4,143,810.72
4	AQUE-LASS	FD SPK. IN LEAD.	ALA405K-22	N4,203,441.33 E4,144,438.18
5		FD. 4 PM ON MHR.	SR74-081-12	N4,203,786.50 E4,144,466.46
6		" " " "	" " "	N4,204,111.43 E4,144,469.50
7		FD. L. & T.	" " 15	N4,203,436.78 E4,144,472.59
8	ORION-LASS	FD SPK. & L.	" " "	N4,203,430.48 E4,145,118.54
9	ORION-MAY	FD. 4 PM ON MHR.	" " 14	N4,204,755.53 E4,145,130.78
10	GRID PT. 11	FD. S. T. W.	ALA405K-20	N4,203,423.15 E4,146,438.61
11	GRID PT. 10	FD SPK. T. & W.	" " 23	N4,204,717.39 E4,146,450.64
12		FD SPK. & T.	GLA405K-3	N4,204,743.39 E4,146,450.88
13		FD. 6 PM ON MHR.	SR74-081-12	N4,204,436.24 E4,144,472.59
14		FD. 4 PM ON MHR.	" " "	N4,204,761.58 E4,144,475.53
15		SET BT. SPK. & W.	" " "	N4,205,086.74 E4,144,478.73
16		SET SPK. & W.	" " "	N4,204,763.58 E4,144,807.53
17		SET L. & T. IN S.W.	" " "	" " "
18		SET SPK. & W.	" " "	N4,204,108.51 E4,144,793.28
19		SET L. & T. ON H.W.	" " "	" " "
20		SET SPK. & W.	" " "	N4,204,433.54 E4,144,785.61
21		SET L. & T. ON W.W.	" " "	" " "
22		SET SPK. & T.	" " 9	N4,204,758.77 E4,144,785.00
23		SET L. & T. ON T.C.	" " "	" " "
24		SET SPK. & W.	" " "	N4,203,083.88 E4,144,785.69
25		SET L. & T. ON T.C.	" " "	" " "
26	R/W TIE	SET SPK. IN LEAD.	SR77-178-21	" " "
27	"	SET SPK. & W.	" " "	" " "
28	R/W TIE	SET L. & T. ON T.C.	SR76-158-9	N4,205,080.26 E4,105,167.88
29	R/W TIE	SET RAMSET NAIL & BRASS TAG	SR77-178, 21	" " "
30	"	SET I.P.R. & PLASTIC PLUG.	" " 22	" " "
31	"	SET RAMSET NAIL & BRASS TAG	" " "	" " "
32	"	SET I.P.R. & PLASTIC PLUG	" " "	" " "
33	"	SET RAMSET NAIL & BRASS TAG	" " "	" " "
34	"	SET I.P.R. & PLASTIC PLUG	" " "	" " "
35	"	" " " "	" " 23	" " "
36	"	SET RAMSET NAIL & BRASS TAG	" " "	" " "
37	"	SET I.P.R. & PLASTIC PLUG	" " "	" " "
38	"	SET I.P.R. & PLASTIC PLUG	" " 24	" " "
39	"	SET RAMSET NAIL & BRASS TAG	" " "	" " "
40	"	SET I.P.R. & PLASTIC PLUG	" " "	" " "
41	"	SET RAMSET NAIL & BRASS TAG	" " "	" " "
42	"	SET I.P.R. & PLASTIC PLUG	" " "	" " "
43	"	SET RAMSET NAIL & BRASS TAG	" " 9	" " "
44	"	" " " "	" " "	" " "
45	R/W TIE	" " " "	" " 21	" " "
46	R/W COR.	" " " "	" " 25	" " "
47	"	SET I.P.R. & PLASTIC PLUG	" " "	" " "
48	"	" " " "	" " "	" " "
49	"	NOTHING SET	" " "	" " "

LEGEND

- ▲ SURVEY CONTROL POINTS
- POINTS OF SURVEY
- ANGLE POINTS
- SECTION CORNERS, RANCHO CORNERS
- RECORDED VALUE AS ESTABLISHED PREVIOUSLY
- () VALUE ESTABLISHED BY DISTRICT 7 RIGHT OF WAY BRANCH

NOTE

- BEARINGS ARE BASED ON THE CALIFORNIA COORDINATE SYSTEM, DIVISION 8 SECTION 8809 OF THE 1953 PUBLIC RESOURCES CODE.
- DEPARTMENT OF TRANSPORTATION SURVEY INFORMATION IS AVAILABLE FROM THE SURVEY SECTION OF THE ENGINEERING SERVICES BRANCH, LOS ANGELES, CALIFORNIA.
- DEPARTMENT OF TRANSPORTATION RIGHT OF WAY INFORMATION IS AVAILABLE FROM THE RIGHT OF WAY BRANCH, LOS ANGELES, CALIFORNIA.
- STATIONING SHOWN ON THIS MAP IS FOR REFERENCE ONLY.

IN LOS ANGELES COUNTY
BLK. 2014 MOD. 45

GRID WAS ESTABLISHED FROM LOS ANGELES GEODETIC CONTROL AND PCN LA405/508
TO OBTAIN GROUND LEVEL DISTANCES, DIVIDE GRID DISTANCES SHOWN BY 0.999946006

CONSTRUCTION CONTRACT NO. 07-022824 COMPLETION DATE DEC. 1977

ORIGINAL SCALE 1" = 100'
100 200 300 400 500 FEET

LOS ANGELES COUNTY FILE NO.

STATE OF CALIFORNIA DEPARTMENT OF TRANSPORTATION - SURVEYS

DISTRICT	COUNTY	ROUTE	MILE	TOTAL PROJECT	SHEET NO.	TOTAL SHEETS	DATE OF PLY	OFFICE SUPERVISOR
7	LA	405	45.5	47.2	1	4	E THOMPSON	L ZENFUSS

MONUMENTATION MAP

MAP NO LA 405 M-45.5

CALIFORNIA COORDINATE SYSTEM - ZONE 7

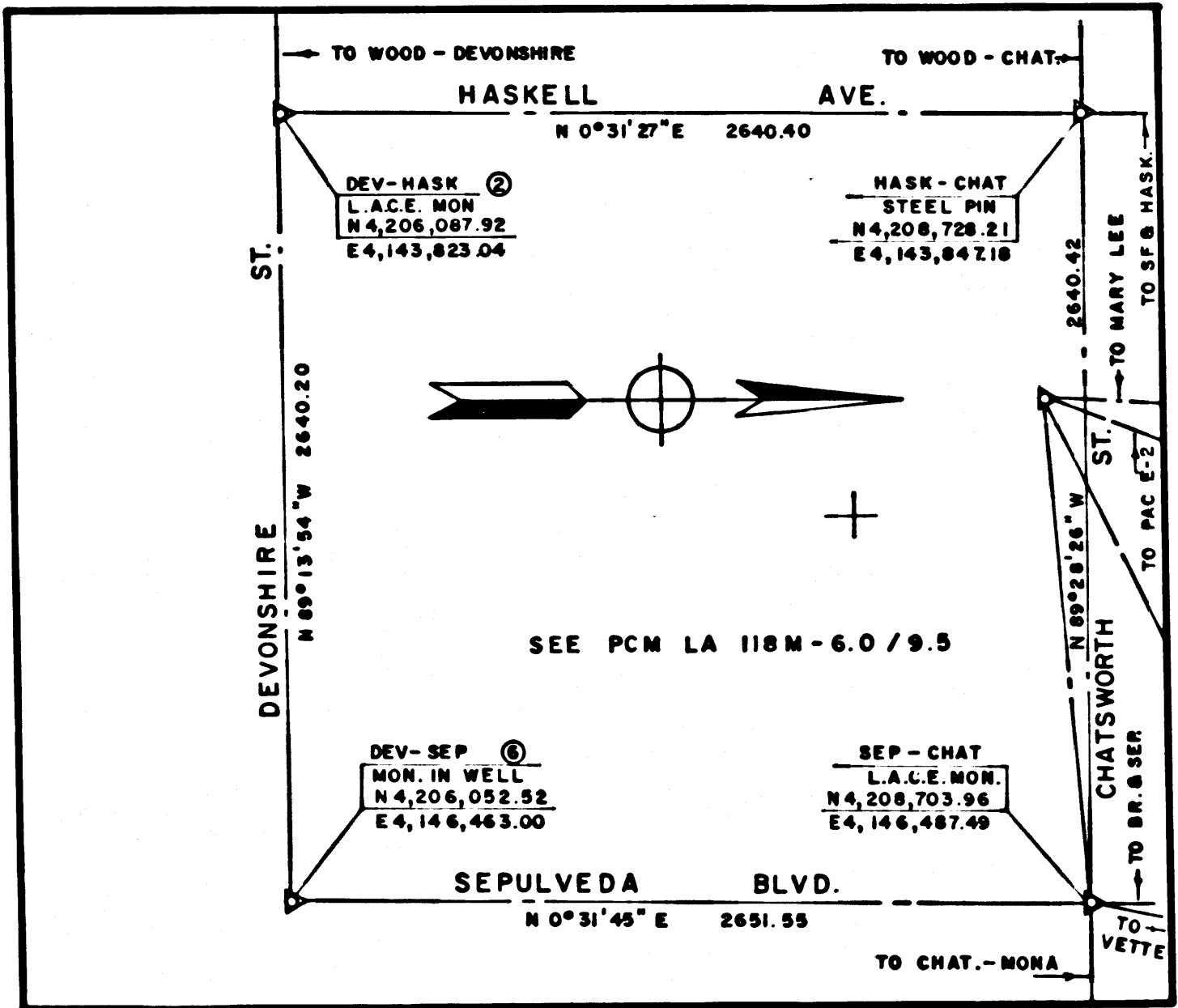
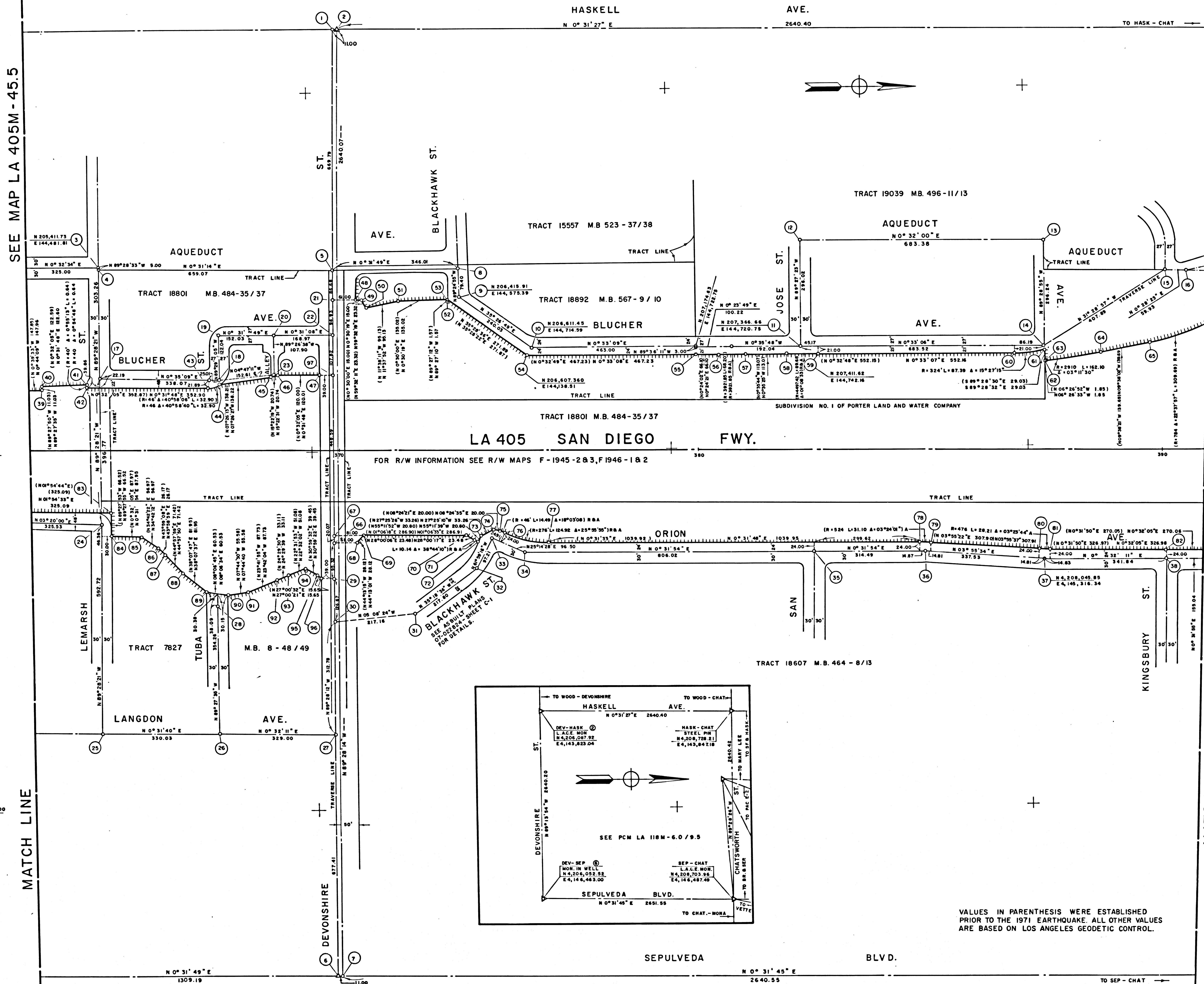
Cur. Map
Rev. by
Date

FM 21701-1

(WORK) 2-24-M 2014 J

(WORK) 2-24-M 2014 J

CITY OF LOS ANGELES



VALUES IN PARENTHESIS WERE ESTABLISHED PRIOR TO THE 1971 EARTHQUAKE. ALL OTHER VALUES ARE BASED ON LOS ANGELES GEODETIC CONTROL.

NO	NAME	DESCRIPTION	REFERENCE	COORDINATES
1	FD LACE MON IN WELL	ALA405K - 0029	N 4,206,076.92 E 4,143,823.04	
2	DEV - MASH	GLA405K - 0003	N 4,206,087.97 E 4,143,823.14	
3	FD BT SPK & W	74 - 081 - 0013	N 4,205,411.61 E 4,144,488.68	
4	FD 2 X 2 & NAIL	" "	N 4,206,070.72 E 4,144,492.80	
5	DEV - SEP	ALA405K - 0028	N 4,206,055.52 E 4,144,483.00	
6	" "	GLA405K - 0003	N 4,206,416.32 E 4,144,495.98	
7	FD BT SPK & W	76 - 158 - 0006	N 4,207,369.47 E 4,144,431.09	
8	FD 4 PMS ON MHR	" "	N 4,208,052.82 E 4,144,431.09	
9	FD 'C' NAIL	ALA405K - 0047	N 4,208,050.14 E 4,144,431.09	
10	FD 2 X 2 & T	" "	N 4,208,397.99 E 4,144,431.09	
11	FD PK NAIL	" "	N 4,208,397.99 E 4,144,431.09	
12	FD PK NAIL & TAG	" "	N 4,205,746.96 E 4,144,431.09	
13	FD BT SPK & W	74 - 081 - 0013	N 4,205,746.96 E 4,144,431.09	
14	FD L & T	" "	N 4,205,746.96 E 4,144,431.09	
15	FD SPK & W	" "	N 4,205,746.96 E 4,144,431.09	
16	R/W TIE	SET SPK & W	77 - 178 - 0006	N 4,206,069.92 E 4,144,431.09
17	FD 'C' NAIL	74 - 081 - 0013	N 4,206,069.92 E 4,144,431.09	
18	FD L & T	" "	N 4,205,999.04 E 4,144,431.09	
19	FD BT SPK & W	" "	N 4,205,999.04 E 4,144,431.09	
20	FD SPK & T	" "	N 4,205,999.04 E 4,144,431.09	
21	FD SPK IN LEAD	" "	N 4,205,729.79 E 4,145,179.50	
22	FD 'C' NAIL	" "	N 4,205,729.79 E 4,145,179.50	
23	FD C NAIL	ALA405K - 0027	N 4,205,729.79 E 4,145,179.50	
24	SET SPK & W	77 - 178 - 0006	N 4,206,062.84 E 4,145,179.50	
25	FD 2 X 2 & T IN WELL	ALA405K - 0028	N 4,206,062.84 E 4,145,179.50	
26	FD 'C' NAIL	ALA405K - 0041	N 4,206,062.84 E 4,145,179.50	
27	" "	76 - 158 - 0007	N 4,206,455.70 E 4,145,179.50	
28	FD SPK & W	" "	N 4,206,455.70 E 4,145,179.50	
29	FD SPK & T	" "	N 4,207,394.63 E 4,145,179.50	
30	" "	ALA 405K - 0042	N 4,207,394.63 E 4,145,179.50	
31	" "	ALA405K - 0043	N 4,208,397.99 E 4,145,179.50	
32	R/W COR	SET 'I' P & PLASTIC PLUG	77 - 178 - 0009	N 4,205,746.96 E 4,144,431.09
33	" "	" "	77 - 178 - 0010	N 4,205,746.96 E 4,144,431.09
34	" "	SET RAMSET NAIL & BR TAG	" "	N 4,206,029.06 E 4,144,431.09
35	" "	SET 'I' P & PLASTIC PLUG	77 - 178 - 0012	N 4,206,130.97 E 4,144,431.09
36	" "	SET RAMSET NAIL & BR TAG	" "	N 4,206,130.97 E 4,144,431.09
37	" "	SET 'I' P & PLASTIC PLUG	77 - 178 - 0011	N 4,206,130.97 E 4,144,431.09
38	" "	SET RAMSET NAIL & BR TAG	" "	N 4,206,130.97 E 4,144,431.09
39	" "	SET 'I' P & PLASTIC PLUG	77 - 178 - 0013	N 4,206,130.97 E 4,144,431.09
40	" "	SET RAMSET NAIL & BR TAG	" "	N 4,206,130.97 E 4,144,431.09
41	" "	SET 'I' P & PLASTIC PLUG	77 - 178 - 0014	N 4,206,130.97 E 4,144,431.09
42	" "	SET RAMSET NAIL & BR TAG	" "	N 4,206,130.97 E 4,144,431.09
43	R/W TIE	SET SPK & W	77 - 178 - 0006	N 4,206,130.97 E 4,144,431.09
44	R/W COR	SET 'I' P & PLASTIC PLUG	" "	N 4,206,130.97 E 4,144,431.09
45	" "	SET RAMSET NAIL & BR TAG	" "	N 4,206,130.97 E 4,144,431.09
46	" "	SET 'I' P & PLASTIC PLUG	77 - 178 - 0007	N 4,206,130.97 E 4,144,431.09
47	" "	SET RAMSET NAIL & BR TAG	" "	N 4,206,130.97 E 4,144,431.09
48	" "	" "	77 - 178 - 0008	N 4,206,130.97 E 4,144,431.09
49	" "	SET 'I' P & PLASTIC PLUG	77 - 178 - 0002	N 4,205,435.42 E 4,145,166.92
50	" "	" "	77 - 178 - 0003	N 4,205,435.42 E 4,145,166.92
51	" "	SET RH NAIL TOP 4" X 4" POST	77 - 178 - 0004	N 4,206,023.82 E 4,145,345.82
52	" "	SET RAMSET NAIL & BR TAG	77 - 178 - 0004	N 4,206,023.82 E 4,145,345.82
53	" "	SET 'I' P & PLASTIC PLUG	77 - 178 - 0005	N 4,206,023.82 E 4,145,345.82
54	" "	SET RAMSET NAIL & BR TAG	" "	N 4,206,023.82 E 4,145,345.82
55	R/W TIE	SET SPK & W	77 - 178 - 0006	N 4,206,023.82 E 4,145,345.82

LEGEND
 ▲ SURVEY CONTROL POINTS
 ○ POINTS OF SURVEY
 △ ANGLE POINTS
 ◇ SECTION CORNERS, RANCHO CORNERS
 * RECORDED VALUE AS ESTABLISHED PREVIOUSLY
 () VALUE ESTABLISHED BY DISTRICT 7 RIGHT OF WAY BRANCH

NOTE
 1. BEARINGS ARE BASED ON THE CALIFORNIA COORDINATE SYSTEM, DIVISION 8, SECTION 8809 OF THE 1953 PUBLIC RESOURCES CODE.
 2. DEPARTMENT OF TRANSPORTATION SURVEY INFORMATION IS AVAILABLE FROM THE SURVEY SECTION OF THE ENGINEERING SERVICES BRANCH, LOS ANGELES, CALIFORNIA.
 3. DEPARTMENT OF TRANSPORTATION RIGHT OF WAY INFORMATION IS AVAILABLE FROM THE RIGHT OF WAY BRANCH, LOS ANGELES, CALIFORNIA.
 4. STATIONING SHOWN ON THIS MAP IS FOR REFERENCE ONLY.

IN LOS ANGELES COUNTY
 BLK. 2014 MOD. 64

GRID WAS ESTABLISHED FROM LOS ANGELES GEODETIC CONTROL AND PCM LA 118 M-6.0 / 9.5
 TO OBTAIN GROUND LEVEL DISTANCES, DIVIDE GRID DISTANCES SHOWN BY 0.999946006

CONSTRUCTION CONTRACT NO. 07-022824 COMPLETION DATE DEC. 1977

ORIGINAL SCALE: 1" = 100'
 100 0 100 200 300 400 500 FEET

LOS ANGELES COUNTY FILE NO.

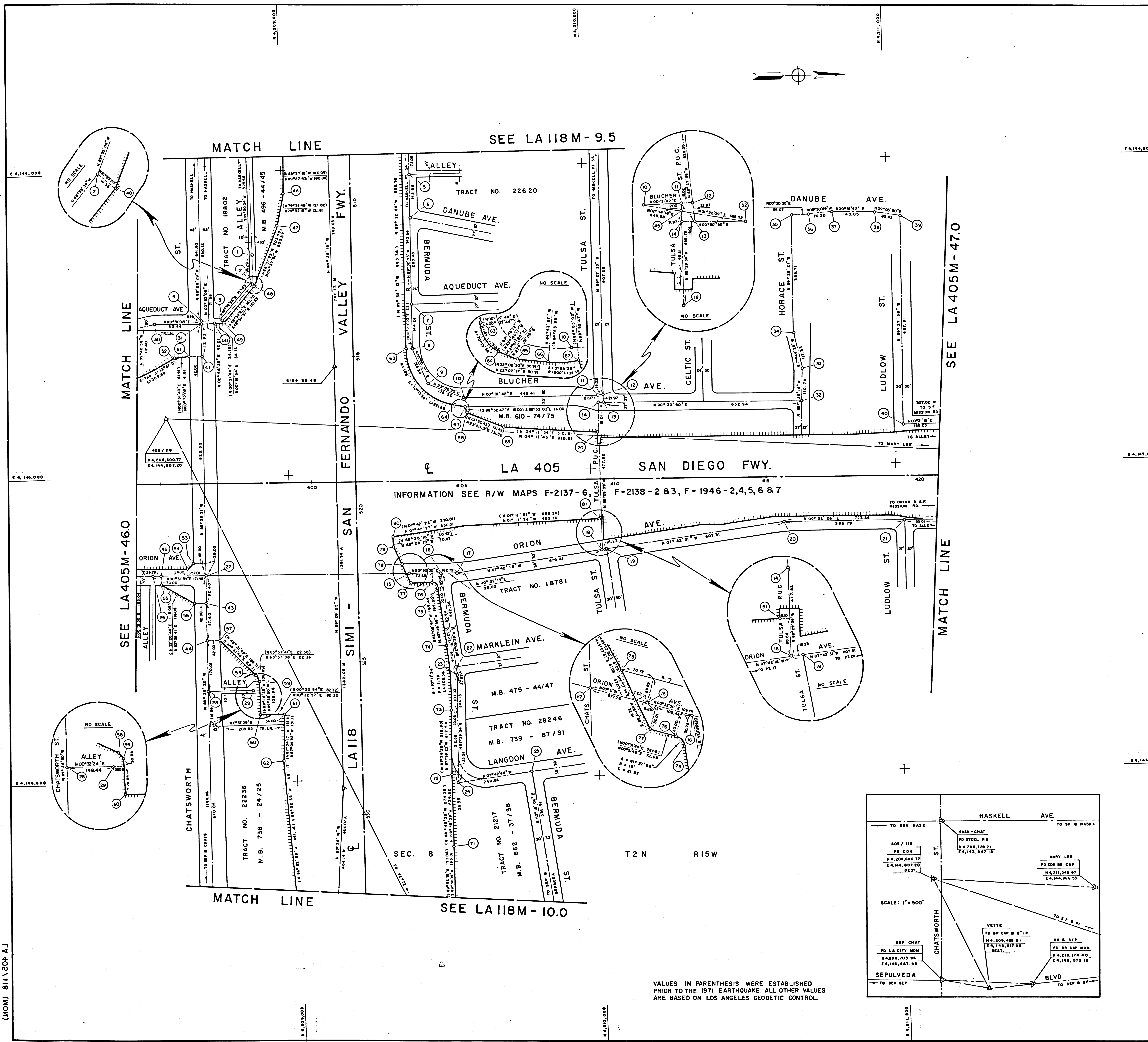
STATE OF CALIFORNIA - DEPARTMENT OF TRANSPORTATION SURVEYS			
DISTRICT	COUNTY	ROUTE	MILE POSTS - TOTAL PROJECT
07	LA	405	45.8 TO 47.2
SHEETS		SHEETS	
1		4	
DRAWN BY		CHECKED BY	
J. MODE		J. DIMOND	
PROJECT ENGINEER		DEPARTMENT	
J. M. SENDEN		L. ZEMFUS	
DATE		DATE	
1978		1978	

MONUMENTATION MAP
 MAP NO. LA 405 M-46.5
 CALIFORNIA COORDINATE SYSTEM - ZONE 17

FN 21761-2

(JOM) 811 SOP A J

(JOM) 811 SOP A J



NO	NAME	DESCRIPTION	REFERENCE	REMARKS
1	FD L & T		ALA-118B-498	
2	FD L & T		ALA-118B-498.621	
3	FD SPK T & W		ALA-118B-498.621	
4	FD SPK B T		ALA-118B-501	
5	FD SQ SPK W/PN		ALA-118B-499	
6	SET CHIS X		ALA-118B-499	
7	FD STD SURVEY MON		ALA-405K-56	
8	FD SPK B T		ALA-405K-56	
9	SET C NAIL		ALA-405K-56	
10	FD L & T		ALA-118B-500.624	
11	FD SPK T & W		ALA-118B-500.618	
12	FD SPK B T		ALA-118B-500	
13	SET C NAIL		ALA-405K-55	
14	FD MH, USED PMS IN A		ALA-405K-55	
15	FD SPK B T		ALA-405K-57	
16	FD MH W/4 PMS		ALA-405K-58	
17	FD SPK B W		SR77-178-018,019	
18	FD SPK T & W		ALA-118B-618	
19	FD 2 X 2 B T		ALA-118B-619	
20	FD SPK T & W		ALA-118B-619	
21	FD SPK T & W		ALA-118B-622	
22	FD SPK T & W		ALA-118B-624	
23	FD CHIS X		ALA-118B-624	
24	FD NAIL		ALA-118B-621	
25	FD SURVEY MON		SR77-178-0015	
26	FD MH W/4 PMS		ALA-405K-63	
27	FD SPK B T		ALA-405K-63	
28	FD SPK B T		ALA-405K-62	
29	FD SPK		ALA-405K-62	
30	FD SPK B T		ALA-405K-62	
31	FD SPK B T		ALA-405K-61	
32	FD SPK T & W		ALA-405K-60	
33	R/W TIES	SET SPK B W	SR74-081-0009	
34	R/W COR	SET "C" NAIL	SR74-053-0002	
35	R/W COR	SET I"IP & DOT PLASTIC PLUG	SR77-178-0015	
36	R/W COR	SET RAMSET NAIL & DOH BRASS TAG	SR77-178-0015	
37	R/W COR	SET I"IP & DOT PLASTIC PLUG	SR77-178-0015	
38	R/W COR	SET RAMSET NAIL & DOH BRASS TAG	SR77-178-0016	
39	R/W COR	SET I"IP & DOT PLASTIC PLUG	SR77-178-0016	
40	R/W COR	SET RAMSET NAIL & DOH BRASS TAG	SR77-178-0017	
41	R/W COR	SET I"IP & DOT PLASTIC PLUG	SR77-178-0017	
42	R/W COR	SET RAMSET NAIL & DOH BRASS TAG	SR77-178-0017	
43	R/W COR	SET I"IP & DOT PLASTIC PLUG	SR77-178-0017	
44	R/W COR	SET RAMSET NAIL & DOH BRASS TAG	SR77-178-0017	
45	R/W COR	SET I"IP & DOT PLASTIC PLUG	SR77-178-0017	
46	R/W COR	SET RAMSET NAIL & DOH BRASS TAG	SR77-178-0018	
47	R/W COR	SET I"IP & DOT PLASTIC PLUG	SR77-178-0018	
48	R/W COR	SET RAMSET NAIL & DOH BRASS TAG	SR77-178-0018	
49	R/W COR	SET I"IP & DOT PLASTIC PLUG	SR77-178-0018	
50	R/W COR	SET RAMSET NAIL & DOH BRASS TAG	SR77-178-0018	
51	R/W COR	SET I"IP & DOT PLASTIC PLUG	SR77-178-0018	
52	R/W COR	SET RAMSET NAIL & DOH BRASS TAG	SR77-178-0018	
53	R/W COR	SET I"IP & DOT PLASTIC PLUG	SR77-178-0018	
54	R/W COR	SET RAMSET NAIL & DOH BRASS TAG	SR77-178-0018	
55	R/W COR	SET I"IP & DOT PLASTIC PLUG	SR77-178-0018	
56	R/W COR	SET RAMSET NAIL & DOH BRASS TAG	SR77-178-0018	
57	R/W COR	SET I"IP & DOT PLASTIC PLUG	SR77-178-0018	
58	R/W COR	SET RAMSET NAIL & DOH BRASS TAG	SR77-178-0018	
59	R/W COR	SET I"IP & DOT PLASTIC PLUG	SR77-178-0018	
60	R/W COR	SET RAMSET NAIL & DOH BRASS TAG	SR77-178-0018	
61	R/W COR	SET I"IP & DOT PLASTIC PLUG	SR77-178-0018	
62	R/W COR	SET RAMSET NAIL & DOH BRASS TAG	SR77-178-0018	
63	R/W COR	SET I"IP & DOT PLASTIC PLUG	SR77-178-0018	
64	R/W COR	SET RAMSET NAIL & DOH BRASS TAG	SR77-178-0018	
65	R/W COR	SET I"IP & DOT PLASTIC PLUG	SR77-178-0018	
66	R/W COR	SET RAMSET NAIL & DOH BRASS TAG	SR77-178-0018	
67	R/W COR	SET I"IP & DOT PLASTIC PLUG	SR77-178-0018	
68	R/W COR	SET RAMSET NAIL & DOH BRASS TAG	SR77-178-0018	
69	R/W COR	SET I"IP & DOT PLASTIC PLUG	SR77-178-0018	
70	R/W COR	SET RAMSET NAIL & DOH BRASS TAG	SR77-178-0018	
71	R/W COR	SET I"IP & DOT PLASTIC PLUG	SR77-178-0018	
72	R/W COR	SET RAMSET NAIL & DOH BRASS TAG	SR77-178-0018	
73	R/W COR	SET I"IP & DOT PLASTIC PLUG	SR77-178-0018	
74	R/W COR	SET RAMSET NAIL & DOH BRASS TAG	SR77-178-0018	
75	R/W COR	SET I"IP & DOT PLASTIC PLUG	SR77-178-0018	
76	R/W COR	SET RAMSET NAIL & DOH BRASS TAG	SR77-178-0018	
77	R/W COR	SET I"IP & DOT PLASTIC PLUG	SR77-178-0018	
78	R/W COR	SET RAMSET NAIL & DOH BRASS TAG	SR77-178-0018	
79	R/W COR	SET I"IP & DOT PLASTIC PLUG	SR77-178-0018	
80	R/W COR	SET RAMSET NAIL & DOH BRASS TAG	SR77-178-0018	
81	R/W COR	SET I"IP & DOT PLASTIC PLUG	SR77-178-0018	

LEGEND

- △ SURVEY CONTROL POINTS
- POINTS OF SURVEY
- ◊ ANGLE POINTS
- ◇ SECTION CORNERS, RANCHO CORNERS
- RECORDED VALUE AS ESTABLISHED PREVIOUSLY
- () VALUE ESTABLISHED BY DISTRICT 7 RIGHT OF WAY BRANCH

NOTE

- BEARINGS ARE BASED ON THE CALIFORNIA COORDINATE SYSTEM, DIVISION 8, SECTION 8809 OF THE 1953 PUBLIC RESOURCES CODE.
- DEPARTMENT OF TRANSPORTATION SURVEY INFORMATION IS AVAILABLE FROM THE SURVEY SECTION OF THE ENGINEERING SERVICES BRANCH, LOS ANGELES, CALIFORNIA.
- DEPARTMENT OF TRANSPORTATION RIGHT OF WAY INFORMATION IS AVAILABLE FROM THE RIGHT OF WAY BRANCH, LOS ANGELES, CALIFORNIA.
- STATIONING SHOWN ON THIS MAP IS FOR REFERENCE ONLY.

IN LOS ANGELES COUNTY
 BLK. 2014 MOD. 95

GRID WAS ESTABLISHED FROM FRAME MAP LA 405/118M
 TO OBTAIN GROUND LEVEL DISTANCES, DIVIDE GRID DISTANCES SHOWN BY 0.999946006

CONSTRUCTION CONTRACT NO. 07-022823 COMPLETION DATE FEB 1977

ORIGINAL SCALE: 1" = 100'

LOS ANGELES COUNTY FILE NO.

STATE OF CALIFORNIA - DEPARTMENT OF TRANSPORTATION - SURVEYS

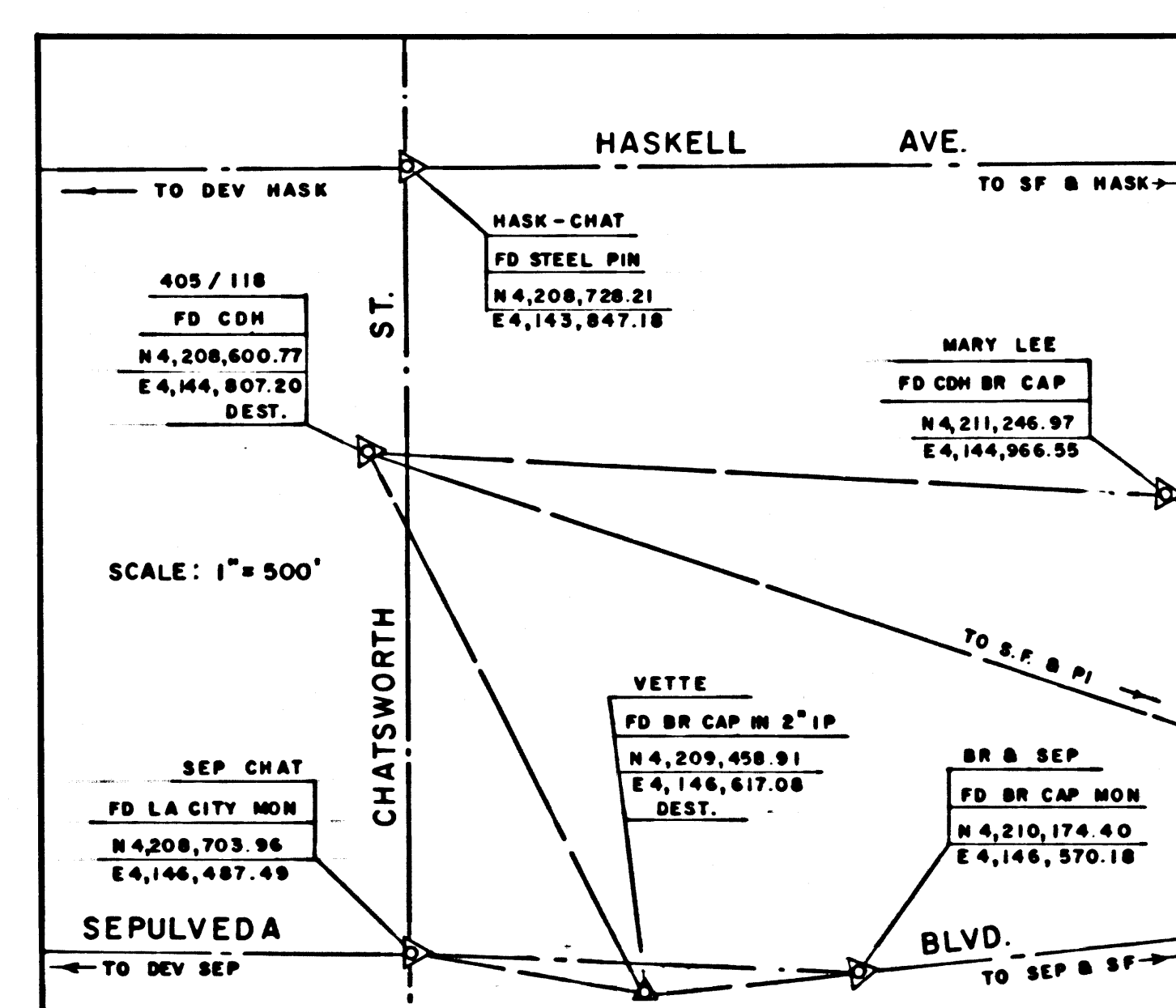
SURV. COUNTY	DATE	NO. SHEETS	TOTAL SHEETS	UNIT OF PARTY	OFFICE SUPERVISOR
07 LA 118/405		3	3	E. THOMPSON	L. ZEFUSS

MONUMENTATION MAP
 MAP NO. LA 405/118

CALIFORNIA COORDINATE SYSTEM - ZONE 7

DATE: 1976

Prepared by: J. DIMOND
 Checked by: J. DIMOND
 Project Engineer: J. DIMOND
 Drawn by: J. DIMOND

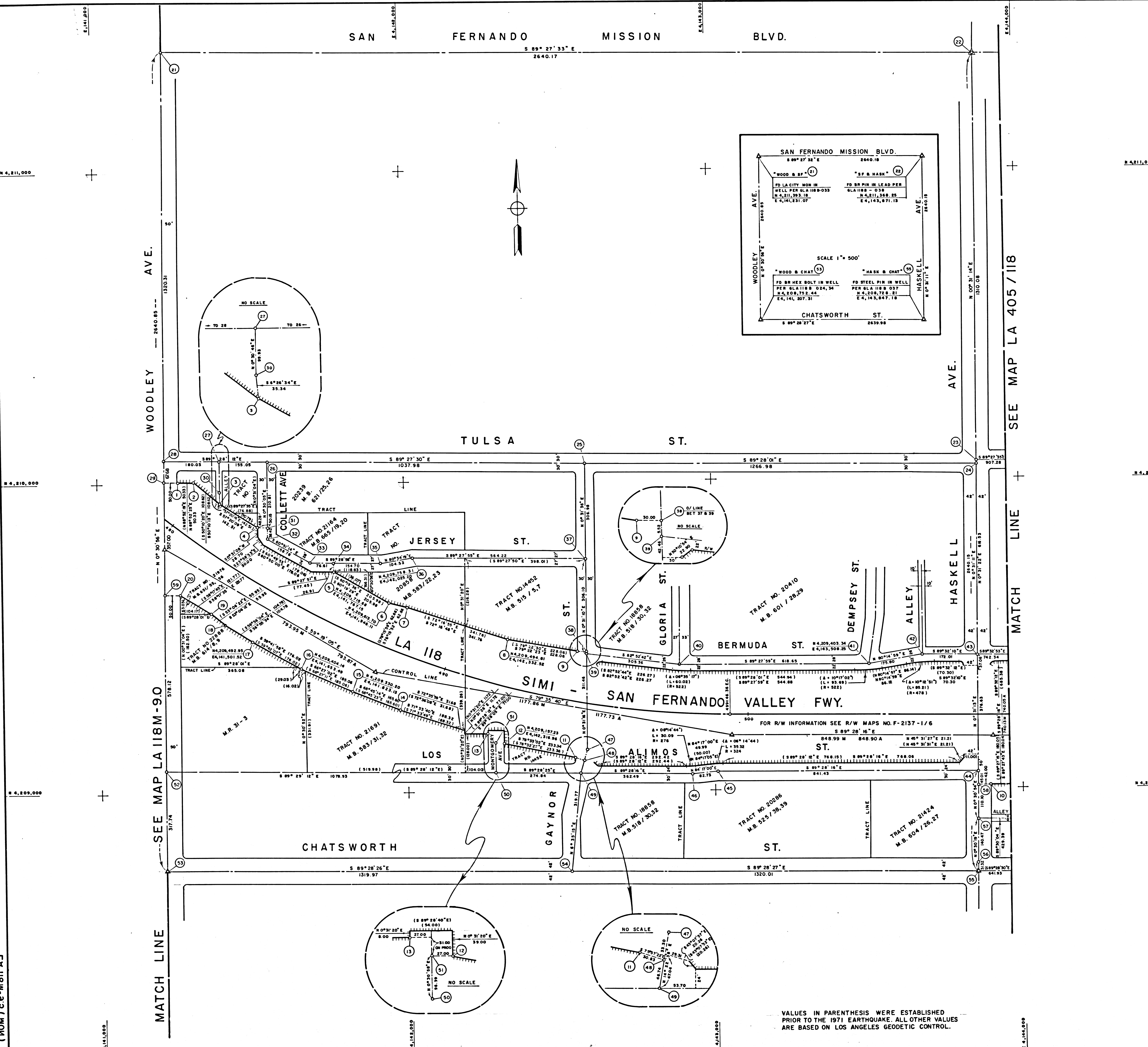


VALUES IN PARENTHESES WERE ESTABLISHED PRIOR TO THE 1971 EARTHQUAKE. ALL OTHER VALUES ARE BASED ON LOS ANGELES GEODETIC CONTROL.

FM 21761-3

(MON) 28-MBIIAJ

(MON) 28-MBIIAJ



NO	NAME	DESCRIPTION	REFERENCE	REMARKS
1	R/W COR	SET RSN & BR TAG	SR77 - 178-027	N 4,210,004.80 E 4,141,268.58
2	"	SET 1" IP & PLASTIC PLUG	"	N 4,210,005.79 E 4,141,268.80
3	"	SET RSN & BR TAG	"	N 4,209,936.22 E 4,141,402.32
4	"	SET 1" IP & PLASTIC PLUG	"	N 4,209,939.30 E 4,141,402.29
5	"	SET RSN & BR TAG	"	N 4,209,998.83 E 4,142,556.67
6	"	SET 1" IP & PLASTIC PLUG	"	N 4,209,999.72 E 4,143,891.48
7	"	SET RSN & BR TAG	SR77 - 178-029	N 4,209,110.91 E 4,142,545.65
8	"	SET 1" IP & PLASTIC PLUG	"	N 4,209,188.72 E 4,142,545.24
9	"	SET RSN & BR TAG	"	N 4,209,270.20 E 4,141,413.71
10	"	SET 1" IP & PLASTIC PLUG	"	N 4,209,550.12 E 4,141,413.71
11	"	SET RSN & BR TAG	"	N 4,209,583.71 E 4,141,368.96
12	"	SET 1" IP & PLASTIC PLUG	"	N 4,209,647.81 E 4,141,263.37
13	"	SET RSN & BR TAG	"	N 4,211,393.18 E 4,141,231.07
14	"	SET 1" IP & PLASTIC PLUG	"	N 4,211,368.25 E 4,143,871.13
15	"	SET RSN & BR TAG	"	N 4,210,058.23 E 4,143,859.14
16	"	SET 1" IP & PLASTIC PLUG	"	N 4,210,060.01 E 4,142,592.23
17	"	SET RSN & BR TAG	"	N 4,210,059.83 E 4,141,354.28
18	"	SET 1" IP & PLASTIC PLUG	"	N 4,210,071.26 E 4,141,359.24
19	"	SET RSN & BR TAG	"	N 4,210,072.93 E 4,141,218.58
20	"	SET 1" IP & PLASTIC PLUG	"	N 4,210,009.20 E 4,141,218.58
21	"	SET RSN & BR TAG	"	N 4,209,971.34 E 4,141,552.44
22	"	SET 1" IP & PLASTIC PLUG	"	N 4,209,420.61 E 4,141,552.10
23	"	SET RSN & BR TAG	"	N 4,209,743.28 E 4,141,550.78
24	"	SET 1" IP & PLASTIC PLUG	"	N 4,209,742.59 E 4,141,767.39
25	"	SET RSN & BR TAG	"	N 4,209,741.19 E 4,141,922.00
26	"	SET 1" IP & PLASTIC PLUG	"	N 4,209,753.05 E 4,142,589.39
27	"	SET RSN & BR TAG	"	N 4,209,432.48 E 4,142,586.68
28	"	SET 1" IP & PLASTIC PLUG	"	N 4,209,446.96 E 4,142,586.62
29	"	SET RSN & BR TAG	"	N 4,209,409.10 E 4,142,889.63
30	"	SET 1" IP & PLASTIC PLUG	"	N 4,209,433.11 E 4,143,681.51
31	"	SET RSN & BR TAG	"	N 4,209,431.72 E 4,143,853.51
32	"	SET 1" IP & PLASTIC PLUG	"	N 4,209,059.11 E 4,143,850.09
33	"	SET RSN & BR TAG	"	N 4,209,062.86 E 4,143,008.66
34	"	SET 1" IP & PLASTIC PLUG	"	N 4,209,054.63 E 4,142,926.38
35	"	SET RSN & BR TAG	"	N 4,209,135.52 E 4,142,583.78
36	"	SET 1" IP & PLASTIC PLUG	"	N 4,209,103.26 E 4,142,575.52
37	"	SET RSN & BR TAG	"	N 4,209,057.98 E 4,142,563.91
38	"	SET 1" IP & PLASTIC PLUG	"	N 4,209,060.00 E 4,142,289.09
39	"	SET RSN & BR TAG	"	N 4,209,157.48 E 4,142,289.96
40	"	SET 1" IP & PLASTIC PLUG	"	N 4,209,070.16 E 4,141,210.20
41	"	SET RSN & BR TAG	"	N 4,208,752.44 E 4,141,207.20
42	"	SET 1" IP & PLASTIC PLUG	"	N 4,208,740.32 E 4,142,527.23
43	"	SET RSN & BR TAG	"	N 4,208,726.21 E 4,143,847.46
44	"	SET 1" IP & PLASTIC PLUG	"	N 4,208,476.613 E 4,143,847.18
45	"	SET RSN & BR TAG	"	N 4,208,900.00 E 4,143,848.70
46	"	SET 1" IP & PLASTIC PLUG	"	N 4,209,010.10 E 4,143,848.65
47	"	SET RSN & BR TAG	"	N 4,209,648.26 E 4,141,215.37

LEGEND
 Δ SURVEY CONTROL POINTS
 ○ POINTS OF SURVEY
 ∠ ANGLE POINTS
 □ SECTION CORNERS, RANCHO CORNERS
 * RECORDED VALUE AS ESTABLISHED PREVIOUSLY
 () VALUE ESTABLISHED BY DISTRICT 7 RIGHT OF WAY BRANCH

NOTE
 1 BEARINGS ARE BASED ON THE CALIFORNIA COORDINATE SYSTEM, DIVISION 8, SECTION 8609 OF THE 1911 PUBLIC RESOURCES CODE.
 2 DEPARTMENT OF TRANSPORTATION SURVEY INFORMATION IS AVAILABLE FROM THE SURVEY SECTION OF THE ENGINEERING SERVICES BRANCH, LOS ANGELES, CALIFORNIA.
 3 DEPARTMENT OF TRANSPORTATION RIGHT OF WAY INFORMATION IS AVAILABLE FROM THE RIGHT OF WAY BRANCH, LOS ANGELES, CALIFORNIA.
 4 STATIONING SHOWN ON THIS MAP IS FOR REFERENCE ONLY.

IN LOS ANGELES COUNTY
 BLK. 2014 MOD. 92

GRID WAS ESTABLISHED FROM LOS ANGELES GEODETIC CONTROL AND PCN LA 118 M-60/95
 TO OBTAIN GROUND LEVEL DISTANCES, DIVIDE GRID DISTANCES SHOWN BY 39994506.

CONSTRUCTION CONTRACT NO. 07-022823 COMPLETION DATE FEB. 1977
 ORIGINAL SCALE: 1" = 100'
 0 100 200 300 400 500 FEET

LOS ANGELES COUNTY FILE NO.

STATE OF CALIFORNIA - DEPARTMENT OF TRANSPORTATION - SURVEYS

PROJECT: LA 118 M-60/95 SHEET: 4 OF 4
 DRAWN BY: J. THOMPSON
 CHECKED BY: L. ZEFFUSS

MONUMENTATION MAP
 MAP NO. LA 118 M-95
 DATE: 11/19/76

CALIFORNIA COORDINATE SYSTEM - ZONE 7

(MON) 28-MBIIAJ

(MON) 28-MBIIAJ

VALUES IN PARENTHESIS WERE ESTABLISHED PRIOR TO THE 1971 EARTHQUAKE. ALL OTHER VALUES ARE BASED ON LOS ANGELES GEODETIC CONTROL.

FM 217614