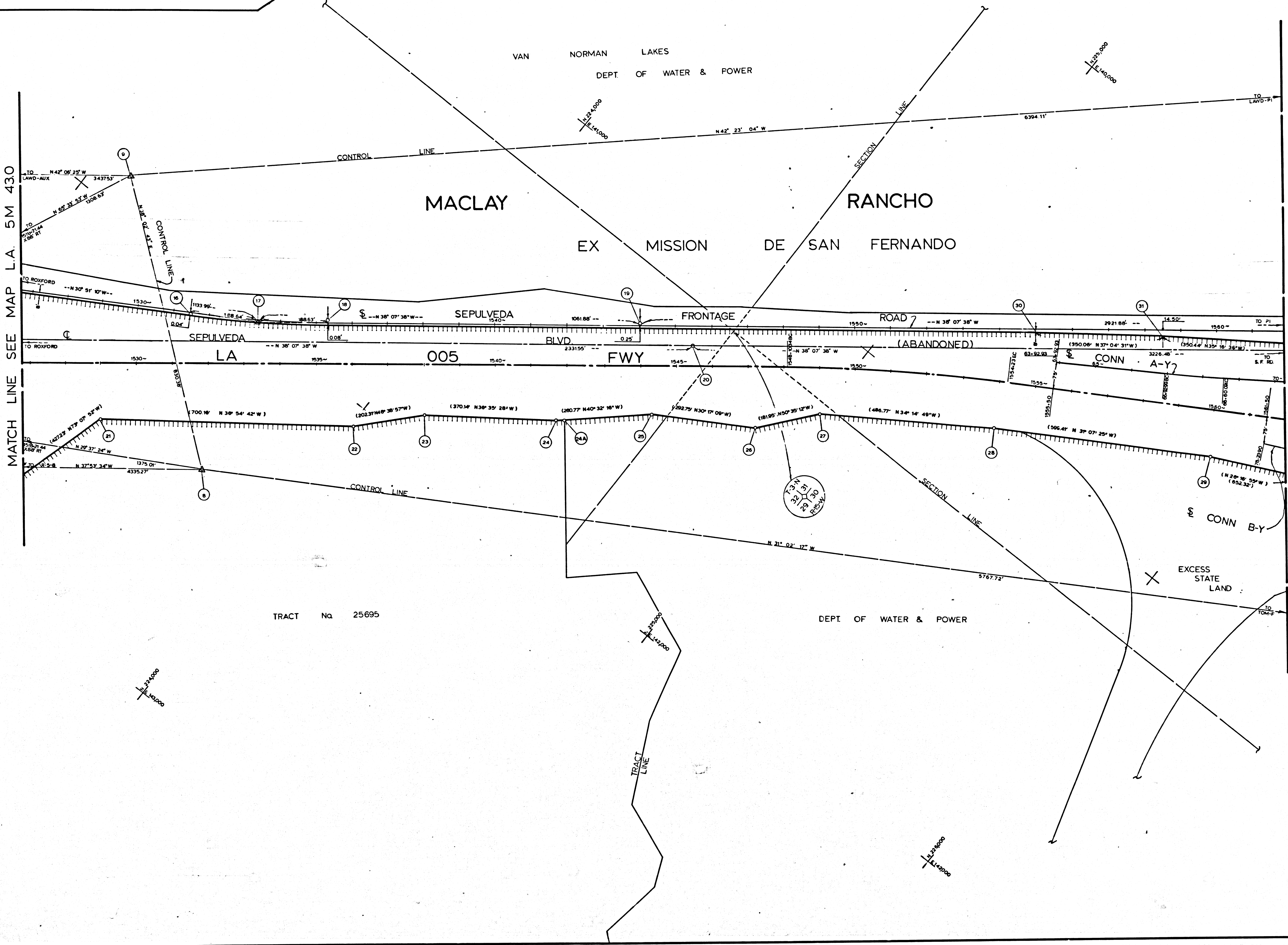
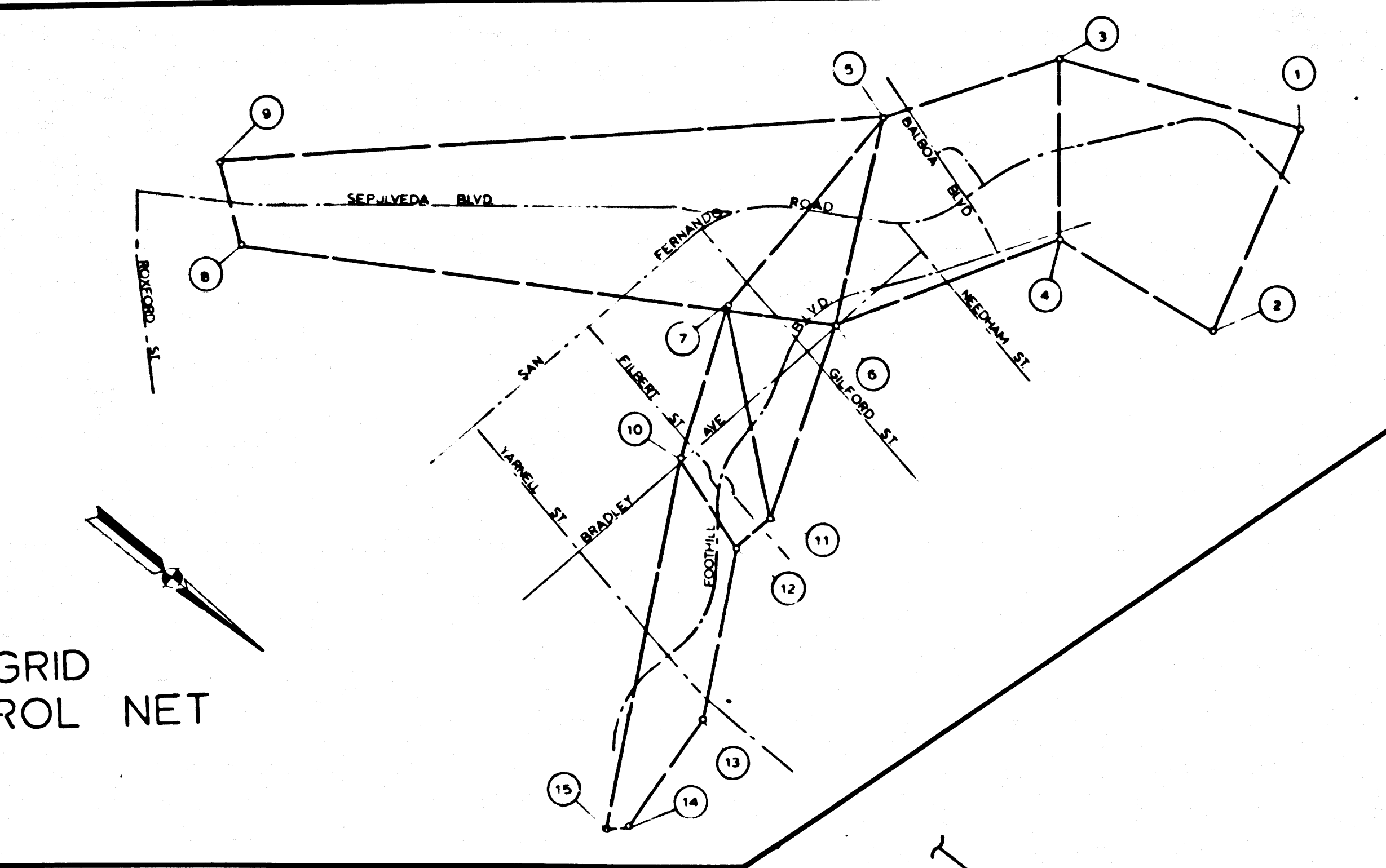


GRID CONTROL NET



NO	NAME	DESCRIPTION	REFERENCE	REMARKS
1	S/L-1	FD BR CAP	GLA-0054-039	N 4231032 96 E 4135109 81
2	SURGE	"	"	N 4231575 20 E 4332232 82
3	QUAYE	FD 2" IP	"	N 4228595 30 E 4330228 84
4	CASCADES II	SET BR CAP	GLA-0091-021	N 4230 804 14 E 4337442 21
5	LAWD-PI	FD 2" IP	ALA-200A-177	N 4227 820 37 E 4337059 60
6	TOM-F	"	"	N 4228 653 30 E 4335437 76
7	SUNFLOWER	FD BR CAP	"	N 4227518 97 E 4335042 10
8	BENDIX	"	GLA-0054-040	N 4223791 37 E 4341300 19
9	TOWER	"	"	N 4223097 43 E 4341899 80
10	SYLBO-HUN	FD LACE BR CAP	ALA-200A-178	N 4228283 46 E 4341300 19
11	OLIVE	FD BR CAP	ALA-200A-177	N 4229 321 09 E 4341262 26
12	155BC	FD L&T	ALA-200A-178	N 4229226 89 E 4341306 40
13	132EC	"	"	N 4230000 54 E 4341306 09
14	145-	"	ALA-200A-178	N 4230083 67 E 4344413 04
15	SYL-DIO	FD LACE BR CAP	"	N 4229896 41 E 4344578 28
16	BC	FD CHIS "X"	CEFB 222-141-145	
17	P1	SET SSM	CEFB 222-141-146	
18	EC	FD S T & W	CEFB 222-141-147	
19		FD CHIS "X"	CEFB 222-141-148	
20	S/L-3-22	STD TRAM MON (DESTROYED)	CEFB 1609-23	
21	R/W	FD 2" LP W/ CONC PLUG & SPK	SR77-015 - 25	
22	R/W	FD 2" LP W/ CONC PLUG & SPK	SR77-015 - 25	TRACT CORNER
23	R/W	SET 1" LR W/ PLASTIC CAP	SR77-015 - 24	
24	R/W	NOTHING SET	SR77-015 - 24	FALLS IN WASH
25	R/W	SET 1" LR W/ P.C.	SR77-015 - 23	

MATCH LINE SEE MAP L.A. 5/210

LEGEND

- △ SURVEY CONTROL POINTS
- POINTS OF SURVEY
- ANGLE POINTS
- ◇ SECTION CORNERS, RANCHO CORNERS
- N RECORDED VALUE AS ESTABLISHED PREVIOUSLY
- () VALUE ESTABLISHED BY DISTRICT 7 RIGHT OF WAY BRANCH

NOTE

- BEARINGS ARE BASED ON THE CALIFORNIA COORDINATE SYSTEM, DIVISION 8, SECTION 8809 OF THE 1953 PUBLIC RESOURCES CODE.
- DEPARTMENT OF TRANSPORTATION SURVEY INFORMATION IS AVAILABLE FROM THE SURVEY SECTION OF THE ENGINEERING SERVICES BRANCH, LOS ANGELES, CALIFORNIA.
- DEPARTMENT OF TRANSPORTATION RIGHT OF WAY INFORMATION IS AVAILABLE FROM THE RIGHT OF WAY BRANCH, LOS ANGELES, CALIFORNIA.
- STATIONING SHOWN ON THIS MAP IS FOR REFERENCE ONLY.

IN LOS ANGELES COUNTY

BLK. 2214 MOD. 41

GRID WAS ESTABLISHED FROM LOS ANGELES COUNTY CONTROL POINTS
 ST. B-D-AUX. N 4228283 46 ST. DIO N 4229226 89
 E 4141300 19 E 4341306 40
 GRID FACTOR: .99993028

CONSTRUCTION CONTRACT NO. 07-287833 COMPLETION DATE: APRIL 1975

ORIGINAL SCALE: 1" = 100'

100' 0" 200' 0" 300' 0" 400' 0" 500' 0" FEET

LOS ANGELES COUNTY FILE NO.

STATE OF CALIFORNIA - DEPARTMENT OF TRANSPORTATION - SURVEYS

DISTRICT	COUNTY	ROUTE	POST MILES - TOTAL PROJECT	SHEET NO.	TOTAL SHEETS	Sheet of Part	Office Supervisor
07	L.A.	5	200	44	100	4	L. ZENIUS

MONUMENTATION MAP

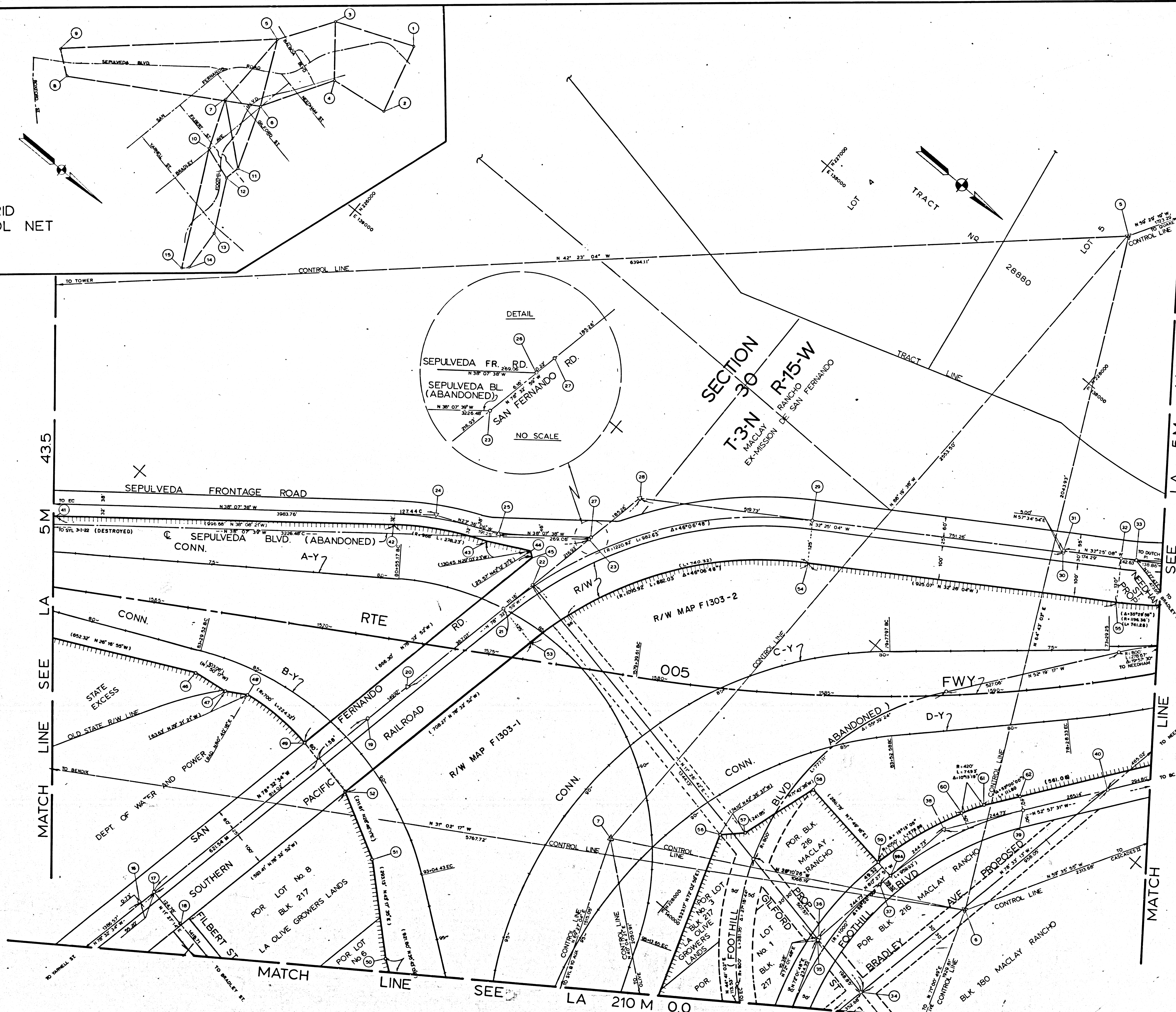
MAP NO. LA 5M 43.5

CALIFORNIA COORDINATE SYSTEM - ZONE 7

Project Engineer: J. TUCKER
 Checked by: J. BIRDOR
 Dated: 1/15/75
 RCE 18108

FM 21767-1

GRID CONTROL NET



NO	NAME	DESCRIPTION	REFERENCE	REMARKS
1	D-1-1	FD BR CAP	GLA-005K-039	N 4231.032 00 E 4330.000 00
2	SURGE	"	"	N 4231.575 20 E 4337.223 82
3	QUARE	FD 2" P	"	N 4228.000 00 E 4336.000 00
4	CASCADIST	SET BR CAP	GLA-000L-021	N 4229.864 14 E 4337.422 21
5	LAWD-PI	FD 2" IP	ALA-210A-177	N 4227.800 37 E 4337.589 60
6	TOM-P	"	"	N 4228.693 30 E 4339.437 76
7	SUNFLOWER	FD BR CAP	"	N 4227.751 88 E 4336.942 10
8	BENDIX	"	GLA-000K-040	N 4229.751 18 E 4342.411 08
9	TOWER	"	"	N 4223.097 43 E 4341.959 80
10	SYL-BO-AUX	FD LACE BR CAP	ALA-210A-178	N 4228.283 48 E 4341.360 75
11	OLIVE	FD BR CAP	ALA-210A-177	N 4229.321 09 E 4341.252 09
12	115BC	FD L&T	ALA-210A-178	N 4225.228 89 E 4341.008 40
13	132EC	"	"	N 4230.000 24 E 4343.860 09
14	145-	"	ALA-210A-179	N 4230.083 67 E 4344.413 04
15	SYL-D10	FD LACE BR CAP	"	N 4228.916 41 E 4344.578 28
16	SYL-31-21	FD STD LACE TRAV MON	CEFB 225-137-100	"
17		SET SAW	"	"
18		FD 2" W/LACE TAG	CEFB 225-137-101	"
19		FD 55M	CEFB 225-137-106	"
20	SYL-31-20	FD STD LACE TRAV MON	"	"
21	BC	SET S & W	CEFB 225-137-107	"
22		SET NAIL	"	"
23		SET S & W (DESTROYED)	CEFB 225-137-108	"
24	PI	SET TAIL & W	SR 77-015-004	"
25	PI	"	"	"
26		SET S & W	"	"
27		FD S T & W	NO REF	"
28	PI	FD 2X2 & T	CEFB 225-137-109	"
29	EC	SET S & W	CEFB 225-137-110	"
30		FD S & T	CEFB 228-137-100	"
31		FD S & W	"	"
32	BC	SET S & W	"	"
33		FD S & W	CEFB 228-137-101	"
34		SET RR S&K	CEFB 228-137-108	"
35		SET S & W	CEFB 228-137-111	"
36	DUTCH PI	"	"	"
37	MPC	"	CEFB 228-137-112	"
38	DUTCH PI	"	CEFB 228-137-113	"
39	EC	"	SR77-015-14	"
40		"	CEFB 228-137-114	"
41	R/W	NOTHING SET	R/W MAP F1303-1	"
42	R/W	SET 1" I.P.	SR77-015-22	"
43	R/W	SET CHAIL & TAG IN CONC CHANNEL	SR77-015-21	"
44	R/W	SET 1" L.R. W/ PLASTIC CAP	SR77-015-20	"
45	R/W	NOTHING SET	R/W MAP F1303-2	"
46	R/W	SET 1" L.R. W/ PLASTIC CAP	SR77-015-13	"
47	R/W	FENCE POST	SR77-015-13	CORNER FALLS ON FENCE POST
48	THE PT.	SET S & B BATHY CAP	SR77-015-13	"
49	R/W	NOTHING SET	"	"
50	R/W	SET 1" L.R. W/ PLASTIC CAP	SR77-015-14	"
51	R/W	SET LEAD & CALTRANS TAG	SR77-015-14	"

LEGEND
 Δ SURVEY CONTROL POINTS
 ○ POINTS OF SURVEY
 ∠ ANGLE POINTS
 □ SECTION CORNERS, RANCHO CORNERS
 ⊕ RECORDED VALUE AS ESTABLISHED PREVIOUSLY
 () VALUE ESTABLISHED BY DISTRICT 7 RIGHT OF WAY BRANCH

NOTE
 1. BEARINGS ARE BASED ON THE CALIFORNIA COORDINATE SYSTEM, DIVISION 8, SECTION 8809 OF THE 1953 PUBLIC RESOURCES CODE.
 2. DEPARTMENT OF TRANSPORTATION SURVEY INFORMATION IS AVAILABLE FROM THE SURVEY SECTION OF THE ENGINEERING SERVICES BRANCH, LOS ANGELES, CALIFORNIA.
 3. DEPARTMENT OF TRANSPORTATION RIGHT OF WAY INFORMATION IS AVAILABLE FROM THE RIGHT OF WAY BRANCH, LOS ANGELES, CALIFORNIA.
 4. STATIONING SHOWN ON THIS MAP IS FOR REFERENCE ONLY.

IN LOS ANGELES COUNTY
 BLK. 2213 MOD. 79

GRID WAS ESTABLISHED FROM LOS ANGELES COUNTY CONTROL POINTS
 SYL-B10-AUX N 4228.283 48 SYL-D10 N 4229.916 41
 E 4341.360 75 E 4344.578 28
 GRID FACTOR: .9923268

CONSTRUCTION CONTRACT NO. 07-287833 COMPLETION DATE: APRIL 1975
 ORIGINAL SCALE: 1" = 100'
 100' 6 4 2 0 100 200 300 400 500 FEET

LOS ANGELES COUNTY FILE NO.

STATE OF CALIFORNIA - DEPARTMENT OF TRANSPORTATION - SURVEYS

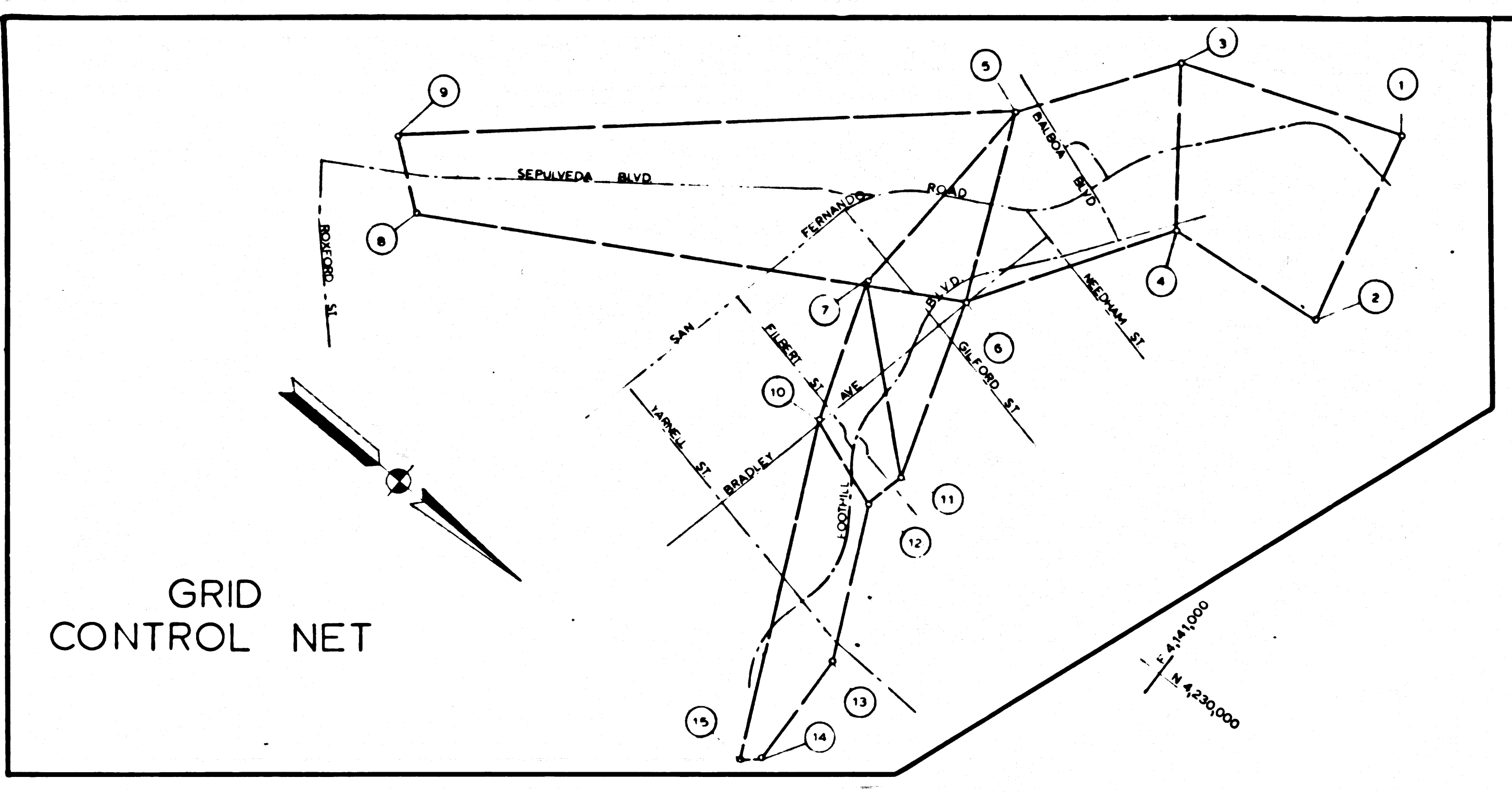
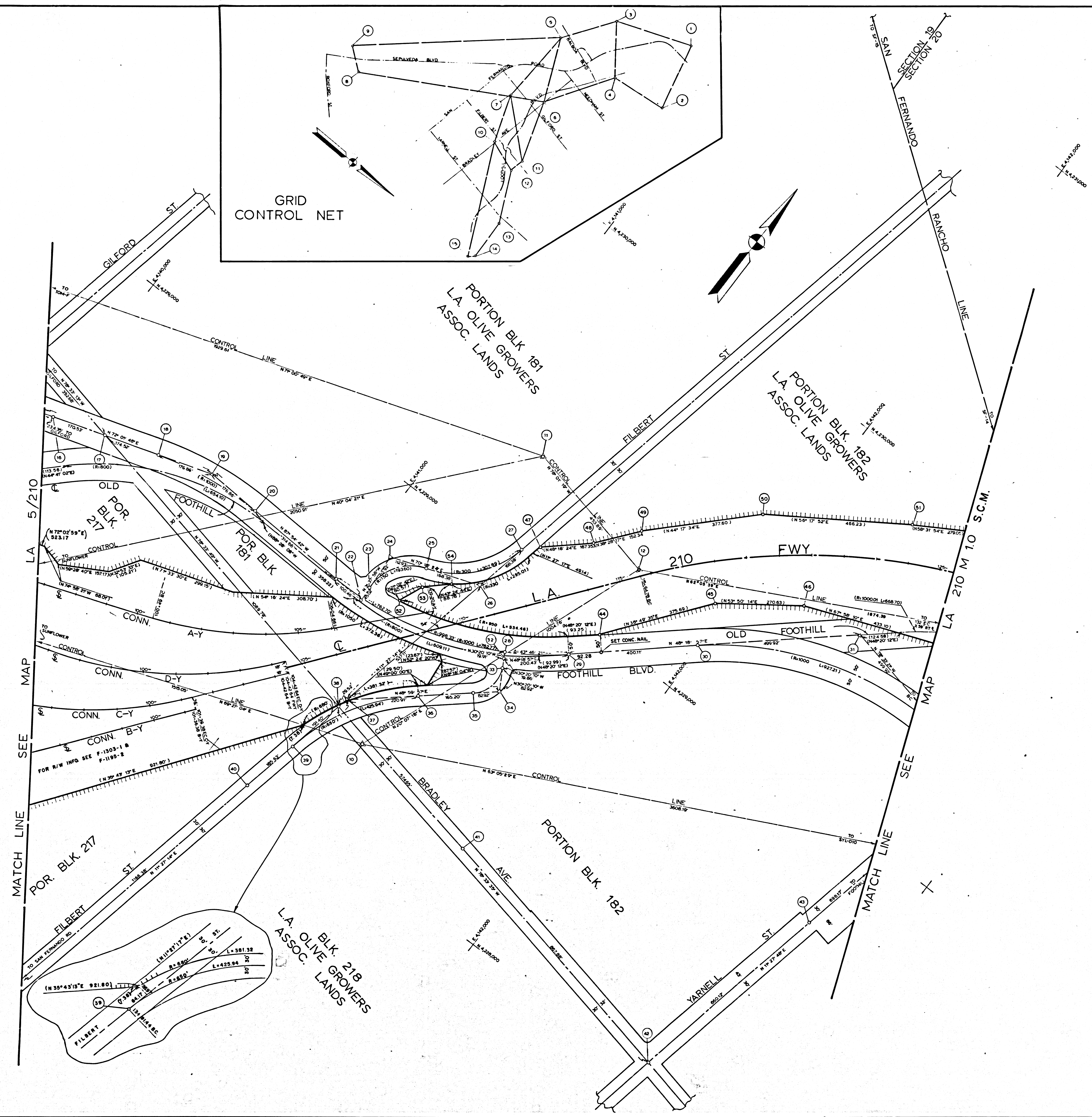
DISTRICT	COUNTY	ROUTE	POST MILES - TOTAL PROJECT	STATION	CHART OF PARTY	OFFICE SUPERVISOR
07	LA	5210	0.42	2	4	L. ZEMMUS

MONUMENTATION MAP
 MAP NO. LA 5210

CHECKED BY: J. TUCKER
 PROJECT ENGINEER: J. TUCKER
 DATE: 3-10-78

CALIFORNIA COORDINATE SYSTEM - ZONE 7

FM 21767-2



NO	NAME	DESCRIPTION	REFERENCE	REMARKS
1	D-1-1	FD BR CAP	GLA-005H-026	N 4231.032 88 E 4129.162 81
2	SURGE	"	"	"
3	OLIVE	FD 2" IP	"	N 4228.609 30 E 4130.004 84
4	CASCADE	SET BR CAP	GLA-005L-026	N 4229.864 14 E 4127.442 21
5	LAWD-PI	FD 2" IP	ALA-210A-177	"
6	TOM-P	"	"	N 4227.603 37 E 4127.583 62
7	SUNFLOWER	FD BR CAP	"	N 4227.751 67 E 4129.942 10
8	BENDIX	"	GLA-005H-040	"
9	TOWER	"	"	N 4223.097 43 E 4142.411 84
10	SYL-BRO-AD	FD LACE BR CAP	ALA-210A-178	N 4228.283 46 E 4141.350 75
11	OLIVE	FD BR CAP	ALA-210A-177	N 4229.321 09 E 4141.282 29
12	YB-BC	FD L&T	ALA-210A-178	N 4229.226 89 E 4141.706 40
13	132 EC	"	"	N 4230.000 04 E 4143.800 08
14	145-	"	ALA-210A-179	N 4230.083 67 E 4144.320 04
15	SYL-D10	FD LACE BR CAP	"	N 4229.916 41 E 4144.578 28
16	BC	SET S & W	CEFB 228-137-110	"
17	EC	SET S & W	CEFB 228-137-107	"
18	PI	SET S & W	CEFB 228-137-106	"
19	PI	SET S & W	CEFB 228-137-105	"
20	BC	SET S & W	CEFB 228-137-104	"
21	EC	SET S & W	CEFB 228-137-103	"
22	PI	SET S & W	CEFB 228-141-154	"
23	BC	SET L & T	CEFB 228-141-154	"
24	PI	NOTHING SET	CEFB 228-141-153	"
25	PRC	SET 2" X 2" STAKE	CEFB 228-141-152	"
26	PI	SET S & W	CEFB 228-141-151	"
27	EC	SET 2" X 2" STAKE	CEFB 228-141-150	"
28	PI	SET S & W	CEFB 228-141-148	"
29	BC	SET S & W	CEFB 228-141-147	"
30	EC	SET S & W	CEFB 228-141-135	"
31	PI	SET 2" X 2" STAKE	CEFB 228-141-136	"
32	PI	SET S & W	CEFB 228-141-133	"
33	EC	SET S & W	CEFB 228-141-133	"
34	PI	SET 2" X 2" STAKE	CEFB 228-141-132	"
35	BC	SET SSM	CEFB 228-141-131	"
36	EC	SET SSM	CEFB 228-141-131	"
37	PI	SET 2" X 2" STAKE	CEFB 228-141-130	"
38	PI	SET 2" X 2" STAKE	CEFB 228-141-130	"
39	BC	SET SSM	CEFB 228-141-129	"
40	FD	BT SPK & W	CEFB 228-141-129	"
41	FD	1 1/2" IP & N	CEFB 228-141-128	"
42	FD	4 PMS IN S&M RIM	CEFB 228-141-127	"
43	FD	4 PMS IN S&M RIM	CEFB 228-141-118	"
44	R/W	NOTHING SET	SR77-015-15	CORNER FALLS ON FENCE POST
45	R/W	SET 1" I.P. W/PLASTIC CAP	SR77-015-15	"
46	R/W	SET 1" I.P. W/P.C.	SR77-015-18	"
47	R/W	HAL B P.C. IN CONC. POST FOOTING	SR77-015-18	"
48	R/W	SET 1" I.P. W/P.C.	SR77-015-18	"
49	R/W	SET 1" I.P. W/P.C.	SR77-015-17	"
50	R/W	SET 1" I.P. W/P.C.	SR77-015-19	"
51	R/W	FD. SPK.	SR77-015-19	"

LEGEND

- ▲ SURVEY CONTROL POINTS
- C POINTS OF SURVEY
- ANGLE POINTS
- ◇ SECTION CORNERS, RANCHO CORNERS
- ⊙ RECORDED VALUE AS ESTABLISHED PREVIOUSLY
- () VALUE ESTABLISHED BY DISTRICT 7 RIGHT OF WAY BRANCH

NOTE

- BEARINGS ARE BASED ON THE CALIFORNIA COORDINATE SYSTEM, DIVISION 8, SECTION 8809 OF THE 1953 PUBLIC RESOURCES CODE.
- DEPARTMENT OF TRANSPORTATION SURVEY INFORMATION IS AVAILABLE FROM THE SURVEY SECTION OF THE ENGINEERING SERVICES BRANCH, LOS ANGELES, CALIFORNIA.
- DEPARTMENT OF TRANSPORTATION RIGHT OF WAY INFORMATION IS AVAILABLE FROM THE RIGHT OF WAY BRANCH, LOS ANGELES, CALIFORNIA.
- STATIONING SHOWN ON THIS MAP IS FOR REFERENCE ONLY.

IN LOS ANGELES COUNTY
 BLK. 2214 MOD. 81

GRID WAS ESTABLISHED FROM LOS ANGELES COUNTY CONTROL POINTS:
 SYL-B10-A10 N 4228.283 46 E 4141.350 75
 SYL-D10 N 4229.916 41 E 4144.578 28
 GRID FACTOR: 0.9992845

CONSTRUCTION CONTRACT NO. 07-287833 COMPLETION DATE APRIL 1975

ORIGINAL SCALE: 1" = 100'
 100 5 4 2 0 .00 200 1 300 400 500 FEET

LOS ANGELES COUNTY FILE NO.

STATE OF CALIFORNIA DEPARTMENT OF TRANSPORTATION - SURVEYS

DISTRICT	COUNTY	ROUTE	POST MILES - TOTAL PROJECT	SHEET NO.	TOTAL SHEETS	DATE	NAME	OFFICE SUPERVISOR
07	LA	210	0.44	3	4		TUCKER	J. BINNORS

MONUMENTATION MAP

MAP NO. LA 210 MOO

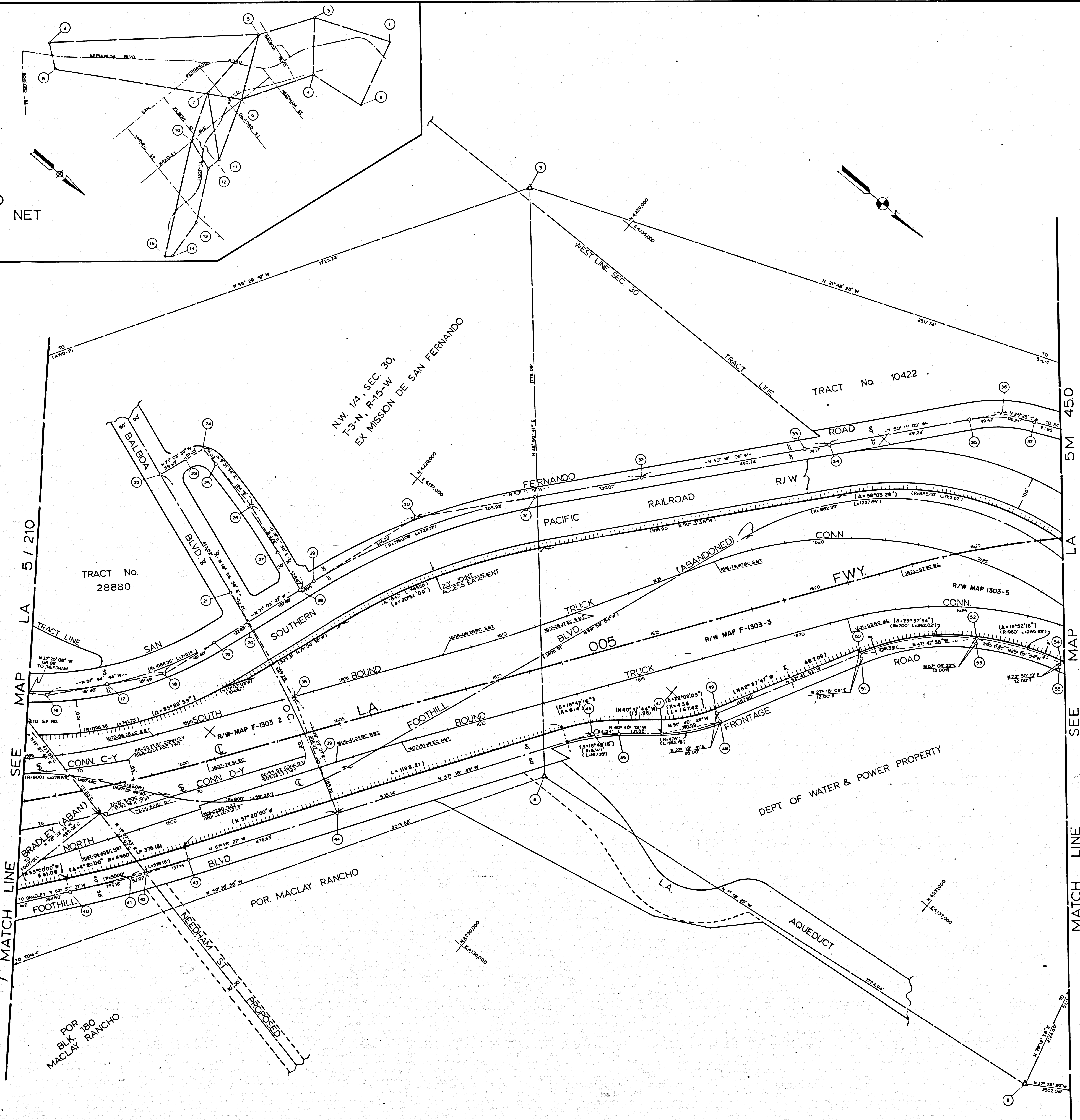
CHECKED BY: TUCKER
 PROJECT ENGINEER: TUCKER
 SUPERVISOR: J. BINNORS

CALIFORNIA COORDINATE SYSTEM - ZONE 07

DATE: _____

FM 21767-3

GRID CONTROL NET



NO	NAME	DESCRIPTION	REFERENCE	REMARKS
1	S-1-1	FD BR CAP	GLA-0058-038	N 4231 032 86 E 4235 058 61
2	SURGE	"	"	"
3	QUAKE	FD 2" IP	"	N 4231 032 86 E 4235 058 61
4	CASCADES	SET BR CAP	GLA-0058-021	N 4228 864 14 E 4237 442 21
5	LAWD-PI	FD 2" IP	ALA-210A-177	N 4227 870 37 E 4232 589 60
6	TOM-F	"	"	N 4228 864 14 E 4237 442 21
7	SANFLOWER	FD BR CAP	"	N 4227 751 67 E 4235 042 10
8	BENDIX	"	GLA-0058-040	N 4227 751 67 E 4235 042 10
9	TOWER	"	"	N 4227 751 67 E 4235 042 10
10	SYL-BO-AUX	FD LACE BR CAP	ALA-210A-178	N 4228 389 48 E 4241 352 75
11	OLIVE	FD BR CAP	ALA-210A-177	N 4228 321 08 E 4241 352 75
12	YB-BC	FD L&T	ALA-210A-178	N 4228 226 89 E 4241 706 40
13	132EC	"	"	N 4230 010 54 E 4243 86 06
14	145-	"	ALA-210A-179	N 4230 083 67 E 4244 012 04
15	SYL-DIO	FD LACE BR CAP	"	N 4229 916 41 E 4244 578 28
16	DUTCH PI	FD S&W	CEFB 228-137-101	
17	MPC	SET S&W	CEFB 228-137-102	
18	DUTCH PI	FD SSM	CEFB 228-137-126	
19	EC	FD RR SPK	CEFB 228-137-128	
20		SET L&T	CEFB 228-137-130	
21	BC	SET L&T	CEFB 228-137-136	
22		SET S&W	CEFB 228-137-137	
23	BC	SET S&W	CEFB 228-137-138	
24	PI	SET 'X' STAKE	CEFB 228-137-138	
25	PCC	SET S&W	CEFB 228-137-138	
26	PI	SET S&W	CEFB 228-137-139	
27	EC	SET S&W	CEFB 228-137-139	
28		SET S&W	CEFB 228-137-140	
29	BC	FD RR SPK	CEFB 228-137-127	
30	PI	FD SSM	CEFB 228-137-126	
31	EC	FD RR SPK	CEFB 228-133-111	
32		SET SSM	CEFB 228-133-110	
33		FD RR SPK	CEFB 228-133-100	
34		FD SPK	CEFB 228-133-108	
35	BC	RESET SPK	CEFB 228-133-107	
36	PI	SET 'X' STAKE	CEFB 228-133-106	
37	EC	RESET SPK	CEFB 228-133-105	
38	PI	SET L&T	CEFB 228-137-135	
39		SET CHIS 'X'		
40	BC	FD S&W	CEFB 228-137-116	
41	PI	SET S&W	CEFB 228-137-117	
42		SET S&W	CEFB 228-137-117	
43	EC	SET MAIL	CEFB 228-137-118	
44		FD BR CAP	CEFB 228-137-114	
45	PI	SET 'PM' MAIL	SR 77-016-12	
46	EC	FD SPK & W	SR 77-016-12	
47	BC	FD SPK & W	SR 77-016-12	
48	EC (BACK)	SET 'PM' MAIL	SR 77-016-13	
49	POI (HEAD)	SET 'PM' MAIL	SR 77-016-13	
50	BC	NOTHING FD OR SET	SR 77-016-14	
51		FD SPK T & W X12 RT BC	SR 77-016-14	
52	PCC	NOTHING FD OR SET	SR 77-016-14	
53		FD SPK T & W X12 RT PCC	SR 77-016-14	
54	EC	NOTHING FD OR SET	SR 77-016-14	
55		FD SPK T & W X12 RT EC	SR 77-016-14	

LEGEND

- △ SURVEY CONTROL POINTS
- POINTS OF SURVEY
- ◇ ANGLE POINTS
- SECTION CORNERS, RANCHO CORNERS
- RECORDED VALUE AS ESTABLISHED PREVIOUSLY
- () VALUE ESTABLISHED BY DISTRICT 7 RIGHT OF WAY BRANCH

NOTE

- BEARINGS ARE BASED ON THE CALIFORNIA COORDINATE SYSTEM, DIVISION 8, SECTION 8809 OF THE 1953 PUBLIC RESOURCES CODE.
- DEPARTMENT OF TRANSPORTATION SURVEY INFORMATION IS AVAILABLE FROM THE SURVEY SECTION OF THE ENGINEERING SERVICES BRANCH, LOS ANGELES, CALIFORNIA.
- DEPARTMENT OF TRANSPORTATION RIGHT OF WAY INFORMATION IS AVAILABLE FROM THE RIGHT OF WAY BRANCH, LOS ANGELES, CALIFORNIA.
- STATIONING SHOWN ON THIS MAP IS FOR REFERENCE ONLY.

IN LOS ANGELES COUNTY
 BLK. 2213 MOD. 97

GRID WAS ESTABLISHED FROM LOS ANGELES COUNTY CONTROL POINTS:
 SYL-BIO-AUX N 4228 289 26 E 4241 352 75
 SYL-DIO N 4229 916 41 E 4244 578 28
 GRID FACTOR: .99992108

CONSTRUCTION CONTRACT NO. 07-287833 COMPLETION DATE: APRIL 1975

ORIGINAL SCALE: 1" = 100'
 100' 0" 200' 0" 300' 0" 400' 0" 500' 0"

LOS ANGELES COUNTY FILE NO.

STATE OF CALIFORNIA - DEPARTMENT OF TRANSPORTATION - SURVEYS

DISTRICT	COUNTY	ROUTE	POST MILES - TOTAL PROJECT	SHEET NO.	TOTAL SHEETS	Chief of Party	Office Supervisor
07	LA	5/210	12.47/12.47	4	4	J. TUCKER	L. ZEMPELUS

MONUMENTATION MAP

MAP NO. LA 5M 44.5

CALIFORNIA COORDINATE SYSTEM - ZONE 7

Checked by: J. DIMOND
 Project Engineer: J. BRASSETSKY
 Date: APR 15 1975