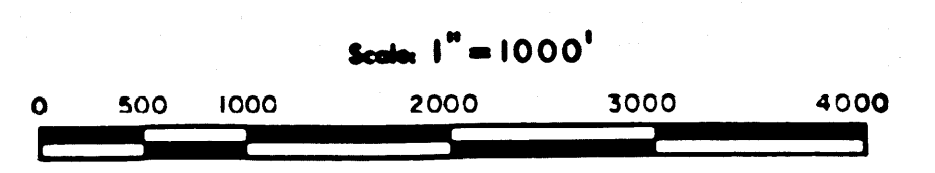


STATION	NORTHING	EASTING	ELEV.
BA 1	478,005.14	1785,186.78	
BA 2	478,803.30	1783,332.03	
BA 3	478,584.07	1785,312.34	
BA 4	477,519.53	1784,521.42	
BA 5	485,784.54	1784,221.77	
OS 3	478,361.55	1787,218.58	
OS 4	476,497.43	1786,852.60	
OS 5	478,347.15	1786,382.33	
OS 6	478,662.67	1785,593.21	
OS 7	474,925.17	1783,714.35	
OS 9	478,241.91	1784,925.18	
OS 10	476,233.16	1784,365.09	
OS 11	474,234.24	1784,808.58	
PH 4	467,514.02	1783,721.56	
PH 9	468,702.25	1781,428.54	
PH 12	465,120.81	1783,151.67	

**LEGEND**

- Triangulation Station as Described  $\triangle$
- Government Corner  $\diamond$
- Right of Way Centerline P.I.  $\circ$
- Calculated Tie  $---$
- California Aqueduct Right of Way Centerline  $---$



Coordinates, bearings and distances are based upon the California Coordinate System, Zone 3.  
 To convert from grid to ground distances, multiply by 1.0002195.  
 All distances are shown in feet. To convert feet to meters multiply feet by 0.3048006.

**FM 21778-1**

T. 8 N. R. 17 W. S. B. M.

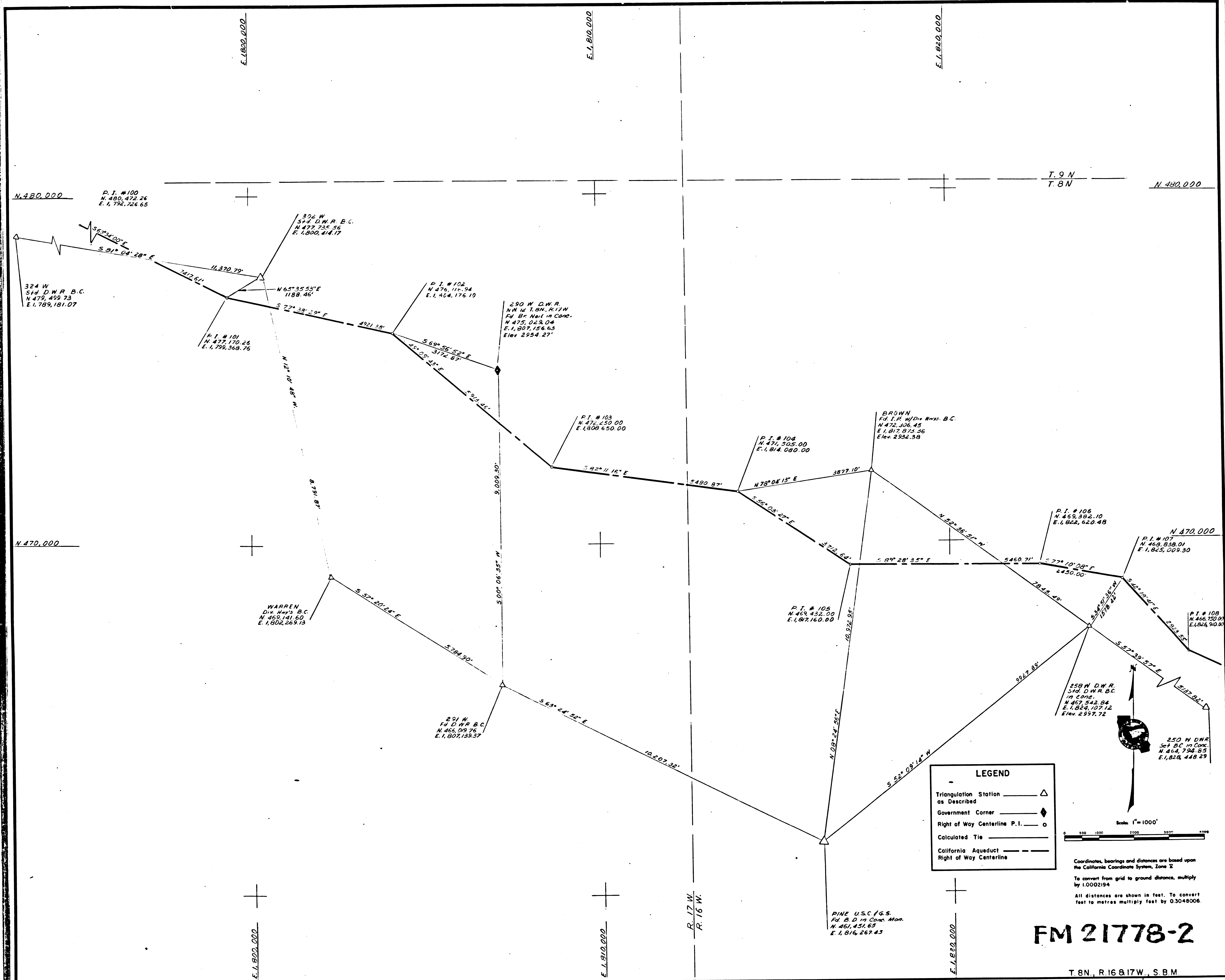
COMPILED BY M. J. BUNNEY	SUBMITTED FOR APPROVAL N. B. F. [Signature]
CHECKED BY [Signature]	APPROVED C. R. [Signature]

STATE OF CALIFORNIA  
 THE RESOURCES AGENCY  
 DEPARTMENT OF WATER RESOURCES  
 DIVISION OF LAND & RIGHT OF WAY

PRIMARY CONTROL  
 RIGHT OF WAY MAP  
 LOS ANGELES COUNTY

DRAWING NO.  
**IN-19-3**





**LEGEND**

- Triangulation Station as Described  $\triangle$
- Government Corner  $\blacklozenge$
- Right of Way Centerline P.I.  $\circ$
- Calculated Tie  $\text{---}$
- California Aqueduct  $\text{---}$
- Right of Way Centerline  $\text{---}$

Scale: 1" = 1000'

Coordinates, bearings and distances are based upon the California Coordinate System, Zone V

To convert from grid to ground distance, multiply by 1.0002194

All distances are shown in feet. To convert feet to metres multiply feet by 0.3048006

**FM 21778-2**

T.8N, R.16&17W, S.B.M

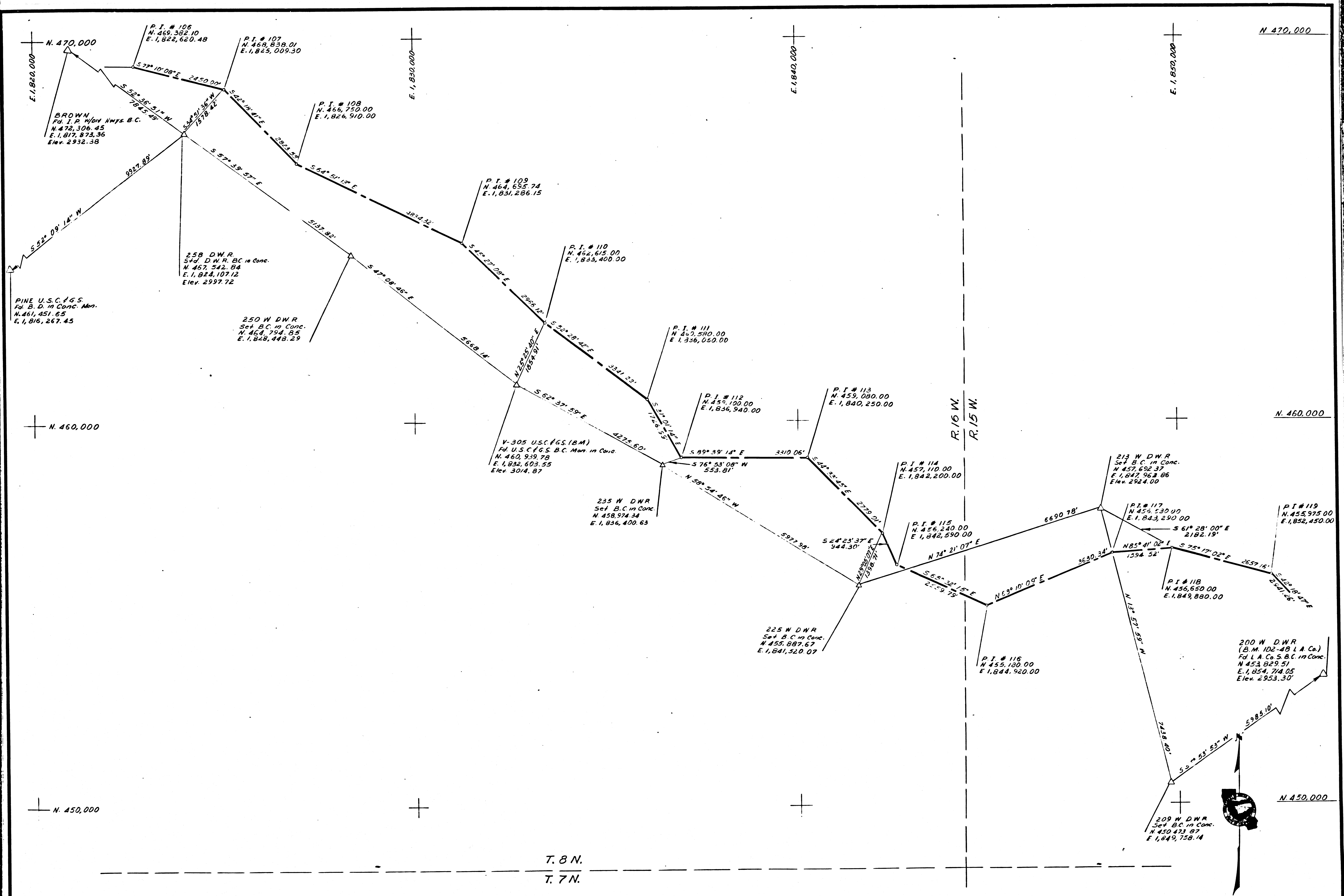
Prepared by: *[Signature]*  
 Checked by: *[Signature]*  
 Approved by: *[Signature]*

STATE OF CALIFORNIA  
 THE RESOURCES AGENCY  
 DEPARTMENT OF WATER RESOURCES  
 DIVISION OF LAND & RIGHT OF WAY

PRIMARY CONTROL  
 RIGHT OF WAY MAP  
 LOS ANGELES COUNTY

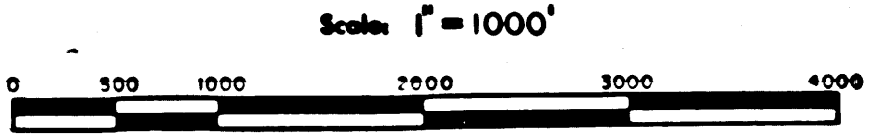
DRAWING NO.  
**IN-19-4**





T. 8 N.  
T. 7 N.

LEGEND	
Triangulation Station	△
Government Corner	◆
Right of Way Centerline P.I.	○
Calculated Tie	—
California Aqueduct	---
Right of Way Centerline	---



Coordinates, bearings and distances are based upon the California Coordinate System, Zone X.  
To convert from grid to ground distance, multiply by 1.002194.  
All distances are shown in feet. To convert feet to metres multiply feet by 0.3048006.

FM 21778-3

T. 8 N., R. 15 & 16 W., S. B. M.

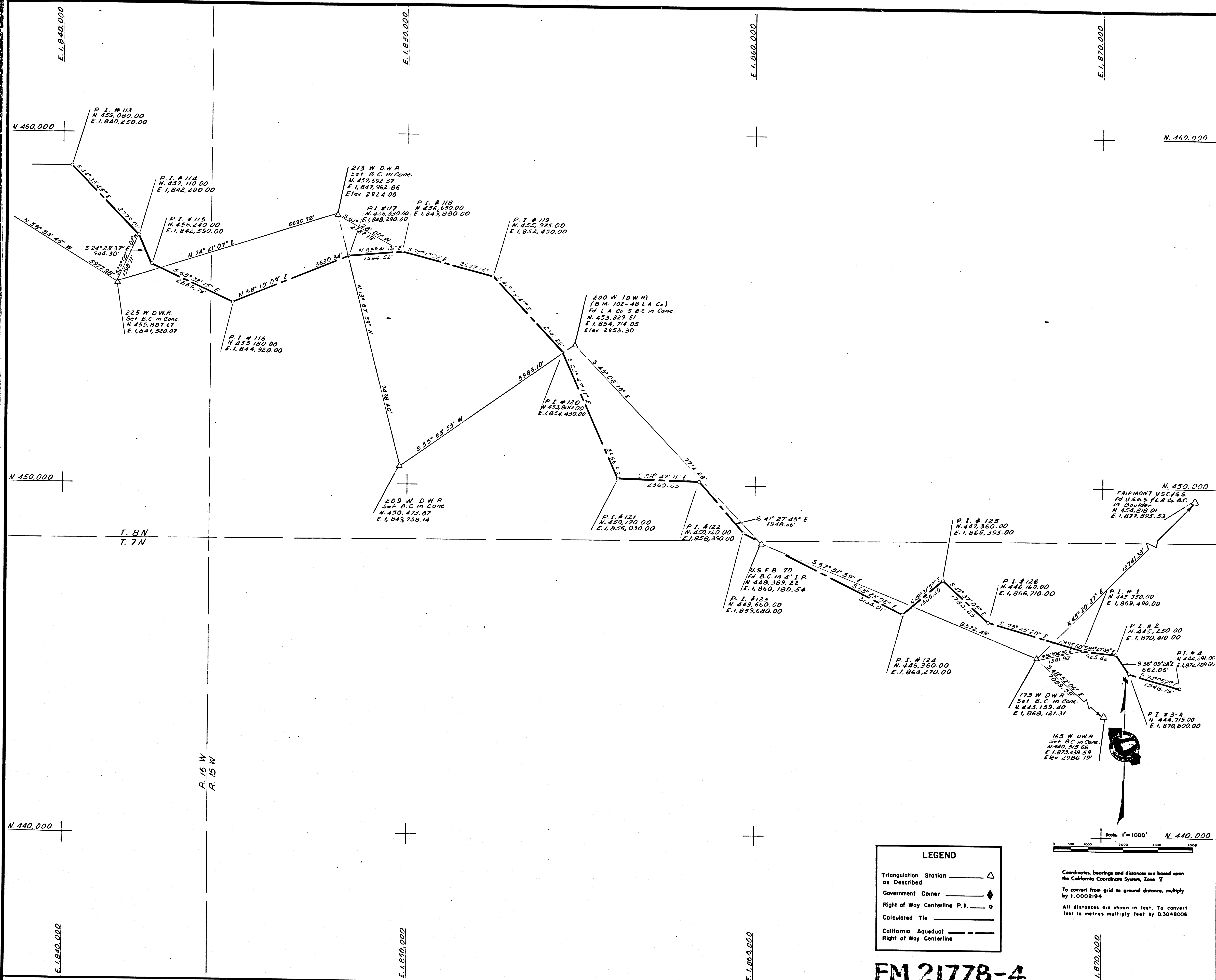
COMPILED BY J. J. SWEENEY	SUBMITTED FOR APPROVAL William J. Sweeney 5-31-78
CHECKED BY J. J. SWEENEY	APPROVED John A. Parris 6-13-78

STATE OF CALIFORNIA  
THE RESOURCES AGENCY  
DEPARTMENT OF WATER RESOURCES  
DIVISION OF LAND & RIGHT OF WAY

PRIMARY CONTROL  
RIGHT OF WAY MAP  
LOS ANGELES COUNTY

DRAWING NO.  
IN-19-5





**LEGEND**

Triangulation Station as Described	△
Government Corner	◆
Right of Way Centerline P.I.	○
Calculated Tie	—
California Aqueduct	---
Right of Way Centerline	---

Scale 1"=1000'

Coordinates, bearings and distances are based upon the California Coordinate System, Zone 10

To convert from grid to ground distance, multiply by 1.0002194

All distances are shown in feet. To convert feet to metres multiply feet by 0.3048006.

**FM 21778-4**

T. 8 N. R. 15 W. S.B.M.

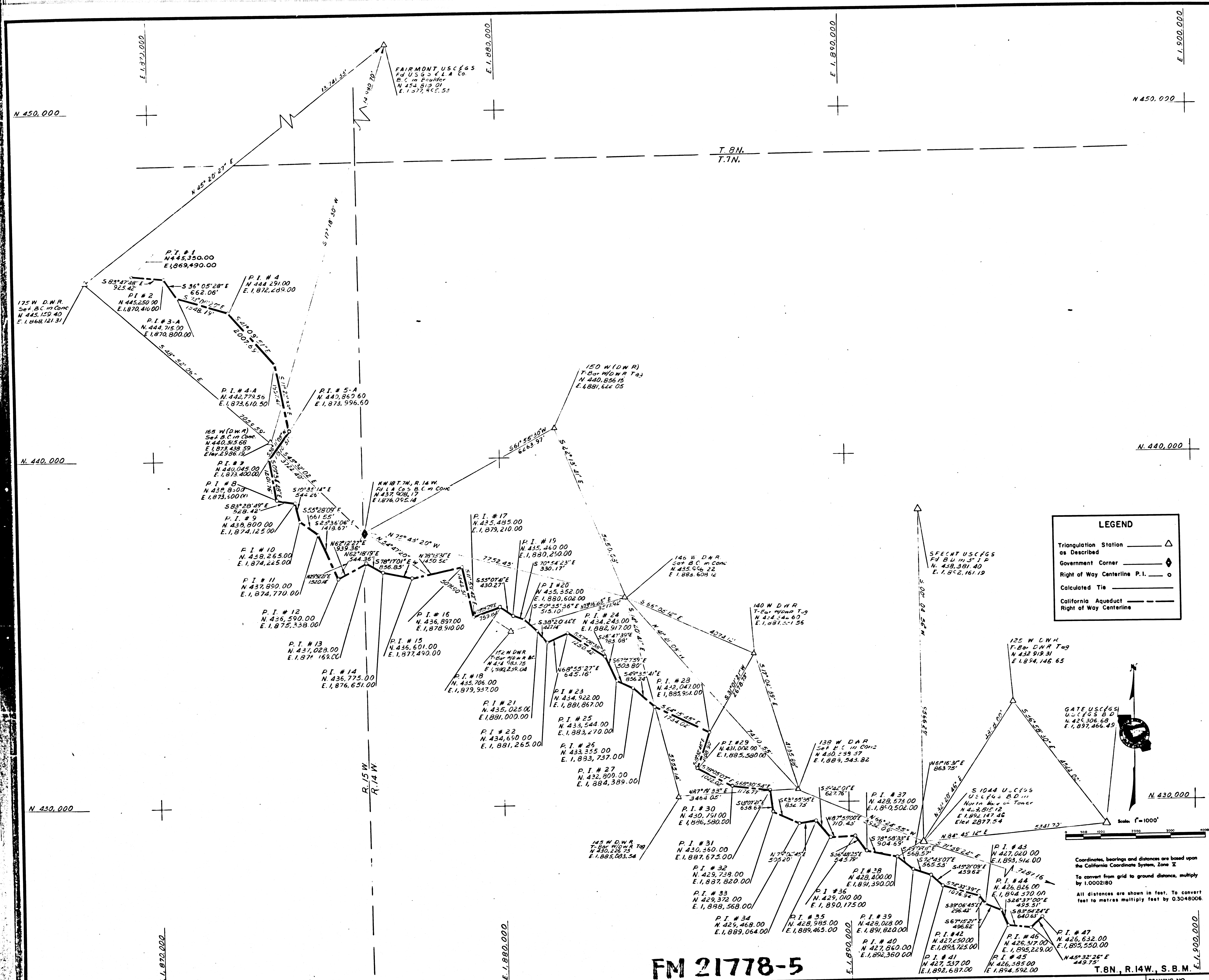
COMPILED BY <i>H. S. ...</i> 5-13-78	SUBMITTED FOR APPROVAL <i>William ...</i> 6-5-78
CHECKED BY <i>W. J. ...</i> 6-13-78	APPROVED <i>John ...</i> 6-13-78

STATE OF CALIFORNIA  
 THE RESOURCES AGENCY  
 DEPARTMENT OF WATER RESOURCES  
 DIVISION OF LAND & RIGHT OF WAY

PRIMARY CONTROL  
 RIGHT OF WAY MAP  
 LOS ANGELES COUNTY

DRAWING NO.  
 IN-19-6





**LEGEND**

- Triangulation Station as Described  $\triangle$
- Government Corner  $\blacklozenge$
- Right of Way Centerline P.I.  $\circ$
- Calculated Tie  $\text{---}$
- California Aqueduct Right of Way Centerline  $\text{---}$

Scale 1" = 1000'

Coordinates, bearings and distances are based upon the California Coordinate System, Zone II

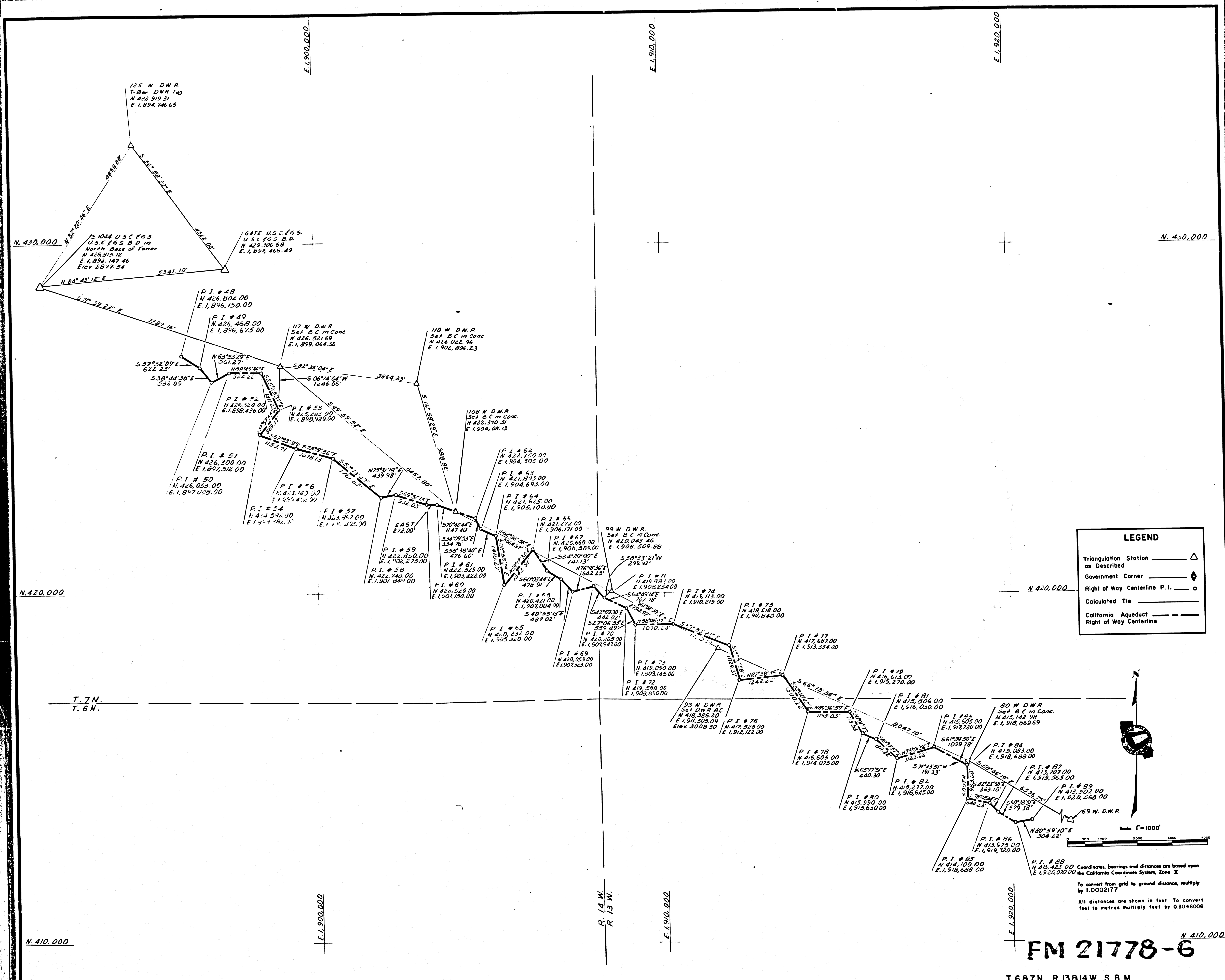
To convert from grid to ground distance, multiply by 1.0002180

All distances are shown in feet. To convert feet to metres multiply feet by 0.3048006

**FM 21778-5**

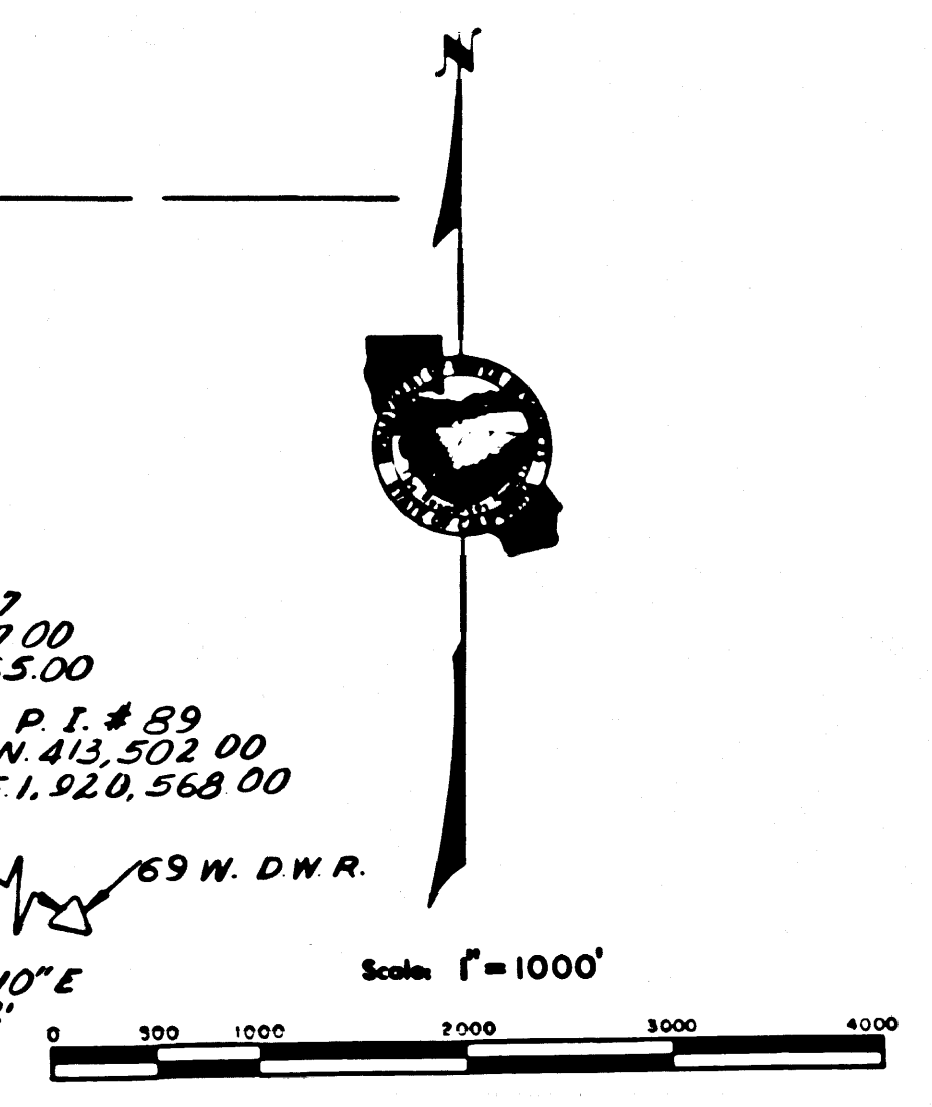
COMPILED BY: J. J. ... DATE: 8-5-78	APPROVED FOR APPROVAL: [Signature] DATE: 8-17-78	STATE OF CALIFORNIA THE RESOURCES AGENCY DEPARTMENT OF WATER RESOURCES DIVISION OF LAND & RIGHT OF WAY	PRIMARY CONTROL RIGHT OF WAY MAP LOS ANGELES COUNTY	DRAWING NO. <b>IN-19-7</b>
---	--	---	---	-------------------------------





**LEGEND**

- Triangulation Station
- Government Corner
- Right of Way Centerline P.I.
- Calculated Tie
- California Aqueduct
- Right of Way Centerline



**FM 21778-6**

T. 6 8 7 N., R. 13 8 14 W., S. B. M.

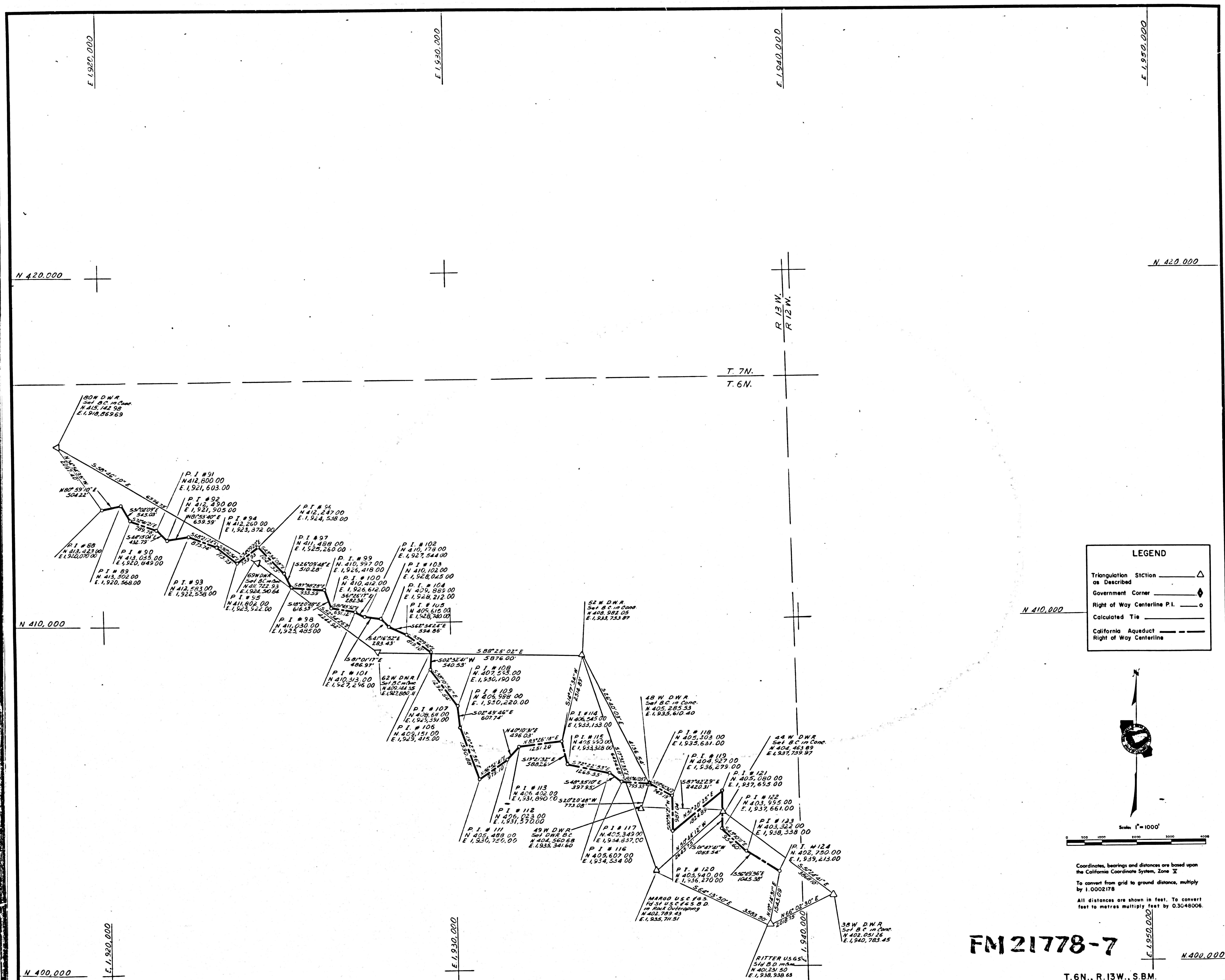
COMPILED BY: <i>[Signature]</i> DATE: 8-5-78	SUBMITTED FOR APPROVAL: <i>[Signature]</i> DATE: 6-9-78
CHECKED BY: <i>[Signature]</i> DATE: 6-9-78	APPROVED: <i>[Signature]</i> DATE: 6-13-78

STATE OF CALIFORNIA  
 THE RESOURCES AGENCY  
 DEPARTMENT OF WATER RESOURCES  
 DIVISION OF LAND & RIGHT OF WAY

PRIMARY CONTROL  
 RIGHT OF WAY MAP  
 LOS ANGELES COUNTY

DRAWING NO.  
**IN-19-8**



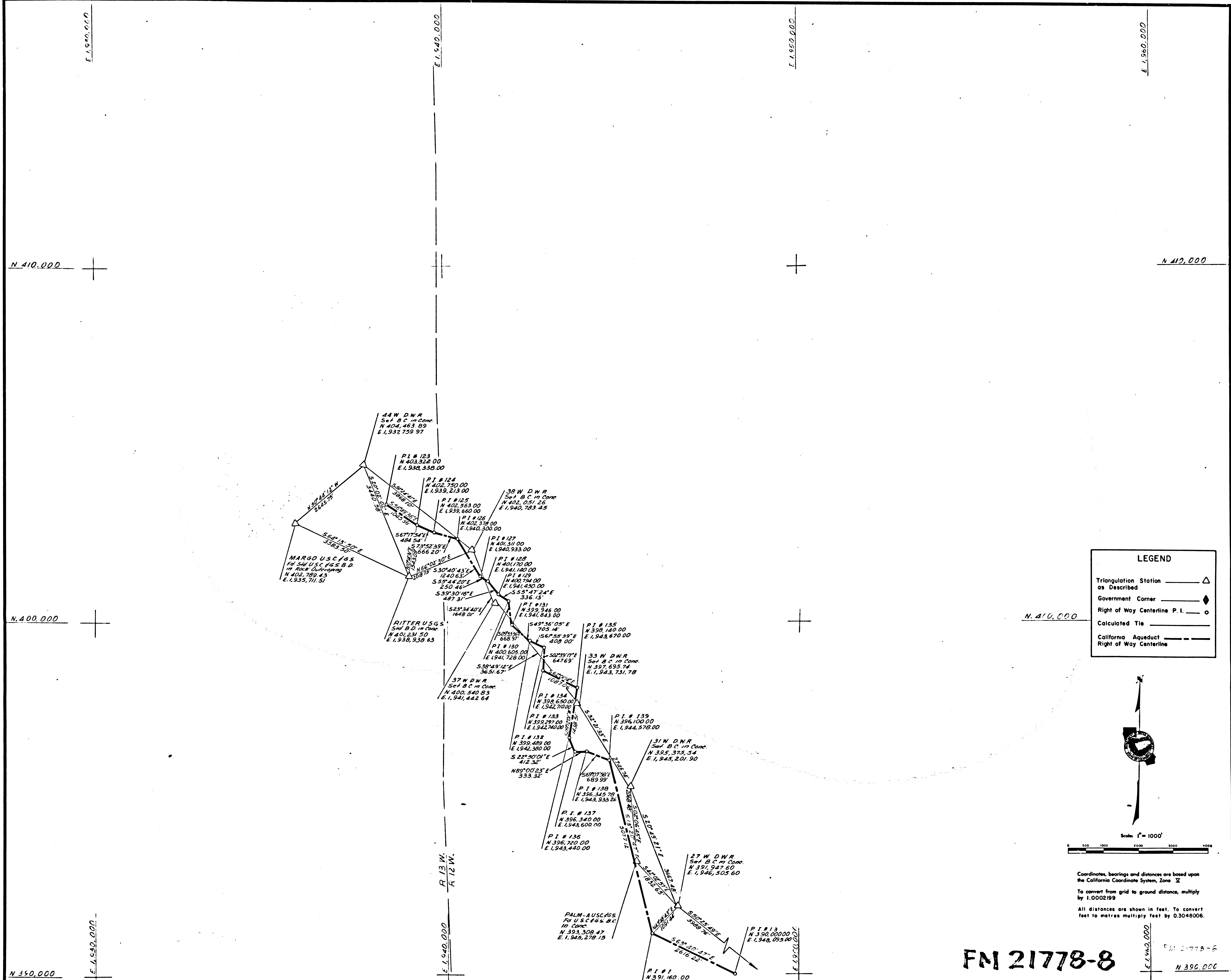


**FM21778-7**

T.6N., R.13W., S.6M.

COMPILED BY: J. J. [Signature] DATE: 6-7-78	SUBMITTED FOR APPROVAL: [Signature] DATE: 6-12-78	STATE OF CALIFORNIA THE RESOURCES AGENCY DEPARTMENT OF WATER RESOURCES DIVISION OF LAND & RIGHT OF WAY	PRIMARY CONTROL RIGHT OF WAY MAP LOS ANGELES COUNTY	DRAWING NO. IN-19-9
---	---	---	---	------------------------





**LEGEND**

- Triangulation Station as Described  $\triangle$
- Government Corner  $\blacklozenge$
- Right of Way Centerline P.I.  $\circ$
- Calculated Tie  $---$
- California Aqueduct  $---$
- Right of Way Centerline  $---$

Scale 1" = 1000'

Coordinates, bearings and distances are based upon the California Coordinate System, Zone 12

To convert from grid to ground distances, multiply by 1.0002199

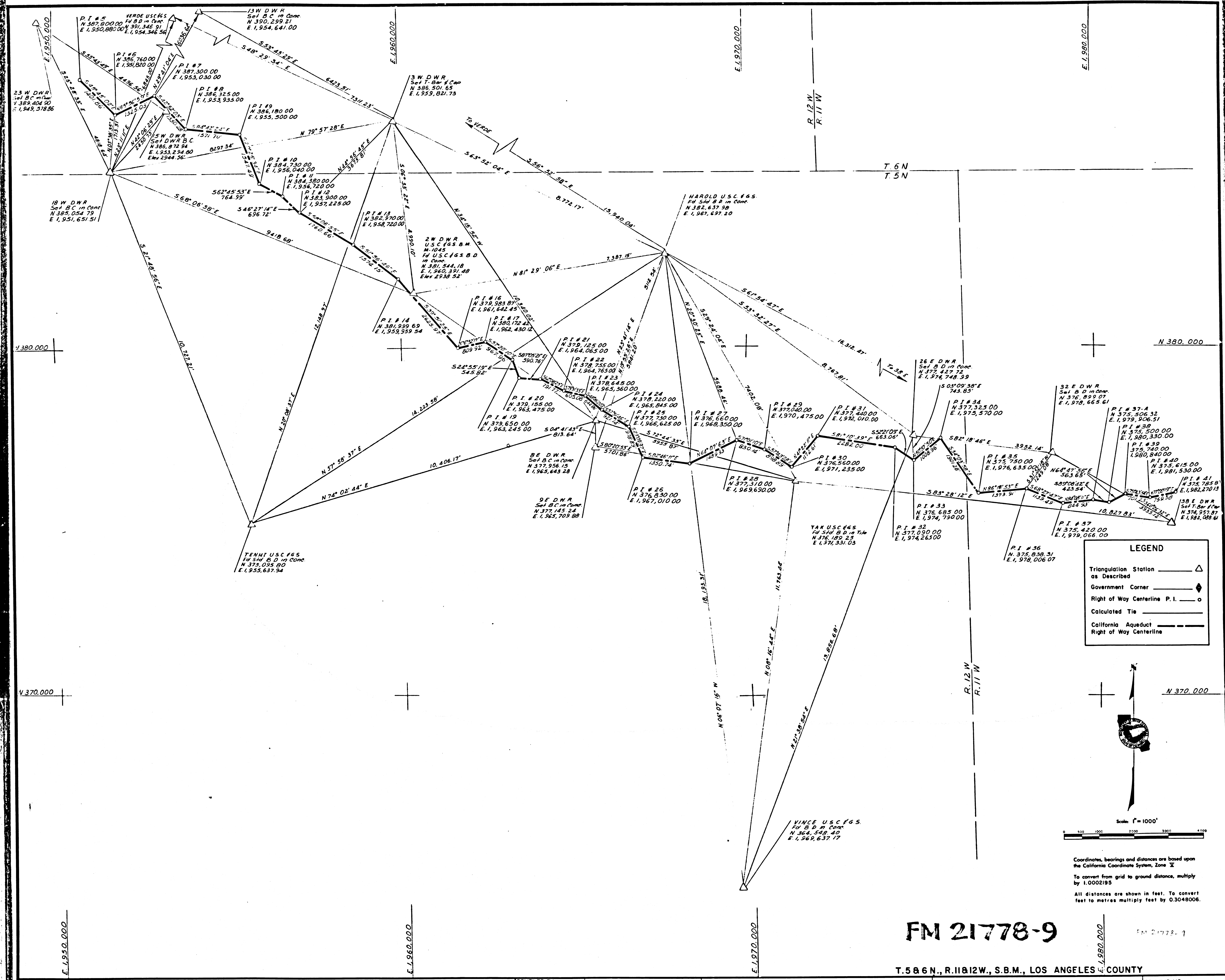
All distances are shown in feet. To convert feet to metres multiply feet by 0.3048006

**FM 21778-8**

T. 6N., R. 12E., S. 31W., S.B.M.

COMPILED BY: W. J. ... 6-1-78	SUBMITTED FOR APPROVAL: ... 6-9-78	STATE OF CALIFORNIA THE RESOURCES AGENCY DEPARTMENT OF WATER RESOURCES DIVISION OF LAND & RIGHT OF WAY	PRIMARY CONTROL RIGHT OF WAY MAP LOS ANGELES COUNTY	DRAWING NO. IN-19-10
-------------------------------------	--	---	---	-------------------------





**LEGEND**

- Triangulation Station as Described  $\triangle$
- Government Corner  $\blacklozenge$
- Right of Way Centerline P.I.  $\circ$
- Calculated Tie  $\text{---}$
- California Aqueduct  $\text{---}$
- Right of Way Centerline  $\text{---}$

Scale 1" = 1000'

Coordinates, bearings and distances are based upon the California Coordinate System, Zone 12.  
 To convert from grid to ground distance, multiply by 1.0002183.  
 All distances are shown in feet. To convert feet to metres multiply feet by 0.3048006.

**FM 21778-9**

T.5&6 N., R.11&12 W., S.B.M., LOS ANGELES COUNTY

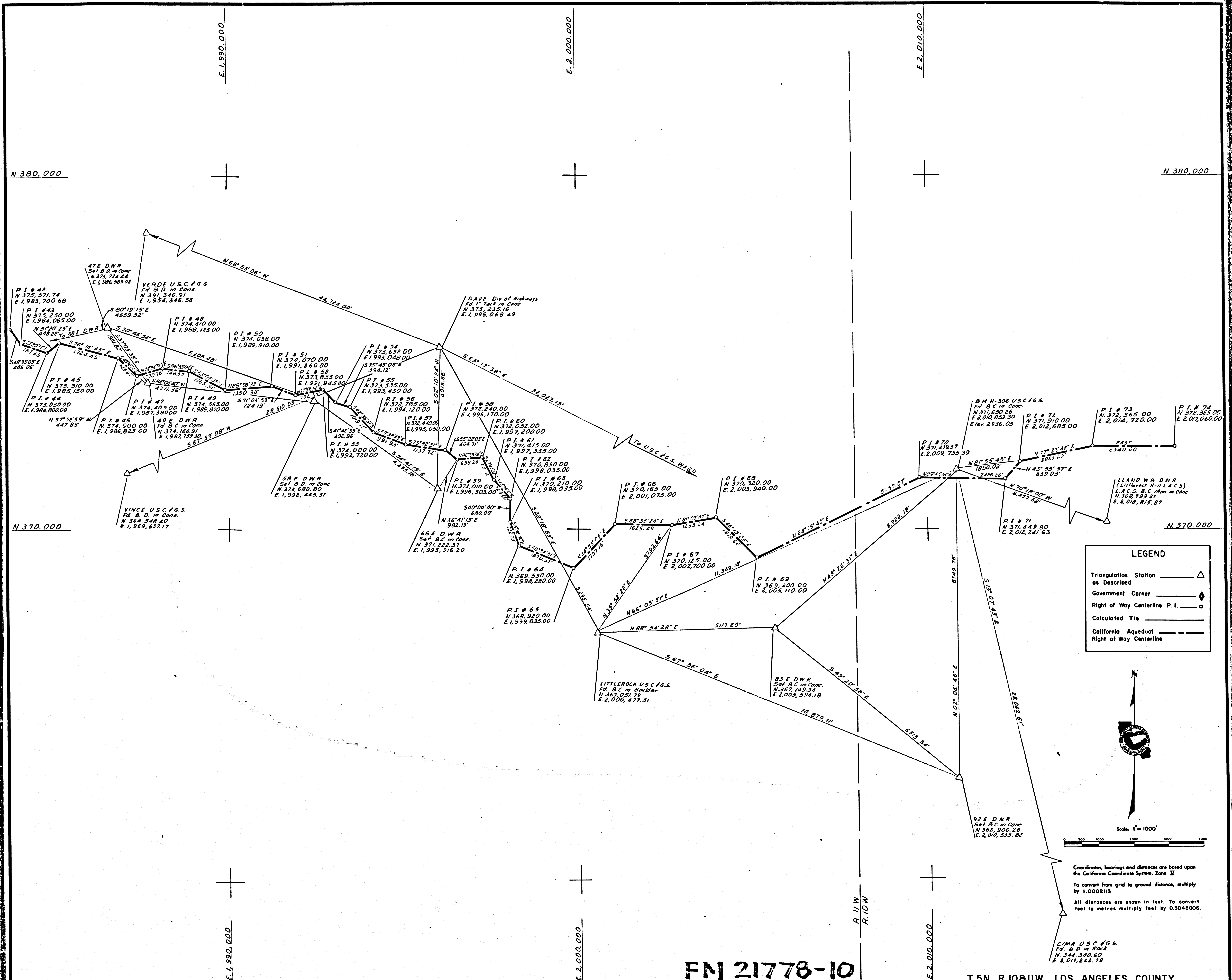
COMPILED BY <i>W. J. [Signature]</i> DATE: 6-15-78	SUBMITTED FOR APPROVAL <i>William J. [Signature]</i> 6-21-78
CHECKED BY <i>W. J. [Signature]</i> DATE: 6-15-78	APPROVED <i>[Signature]</i> 6-26-78

STATE OF CALIFORNIA  
 THE RESOURCES AGENCY  
 DEPARTMENT OF WATER RESOURCES  
 DIVISION OF LAND & RIGHT OF WAY

PRIMARY CONTROL  
 RIGHT OF WAY MAP  
 LOS ANGELES COUNTY

DRAWING NO.  
**IN-19-11**





FM 21778-10

T.5N., R.10&11W. LOS ANGELES COUNTY

DESIGNED BY: *[Signature]*  
 CHECKED BY: *[Signature]*  
 DATE: 6-21-78

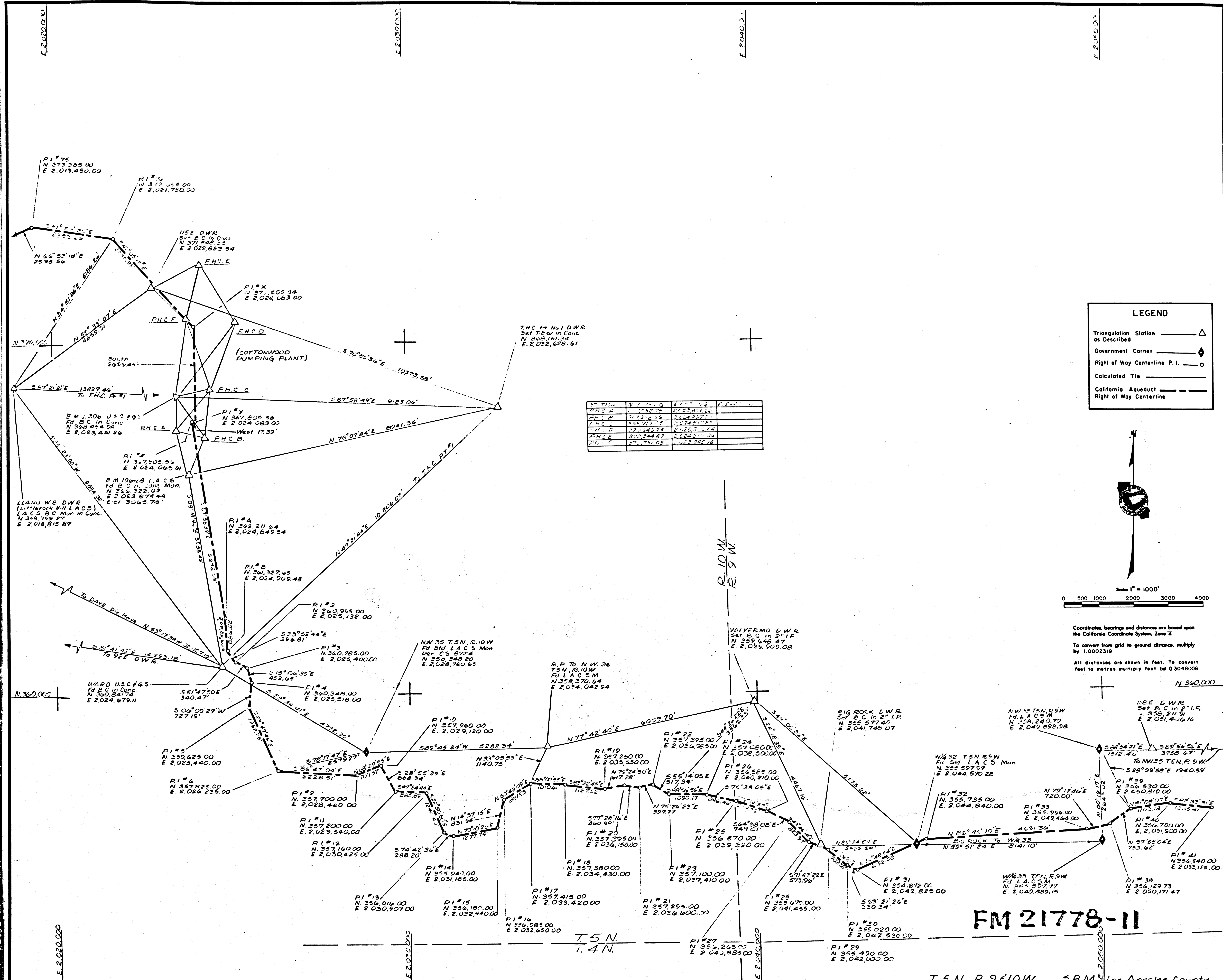
STATE OF CALIFORNIA  
 THE RESOURCES AGENCY  
 DEPARTMENT OF WATER RESOURCES  
 DIVISION OF LAND & RIGHT OF WAY

PRIMARY CONTROL  
 RIGHT OF WAY MAP  
 LOS ANGELES COUNTY

DRAWING NO.  
 IN-19-12

Coordinates, bearings and distances are based upon the California Coordinate System, Zone II  
 To convert from grid to ground distance, multiply by 1.0002113  
 All distances are shown in feet. To convert feet to metres multiply feet by 0.3048006





STATION	N	E	COORDINATES
P1	375,365.00	2,019,450.00	
P2	375,365.00	2,021,750.00	
P3	375,365.00	2,024,050.00	
P4	375,365.00	2,026,350.00	
P5	375,365.00	2,028,650.00	
P6	375,365.00	2,030,950.00	
P7	375,365.00	2,033,250.00	
P8	375,365.00	2,035,550.00	
P9	375,365.00	2,037,850.00	
P10	375,365.00	2,040,150.00	
P11	375,365.00	2,042,450.00	
P12	375,365.00	2,044,750.00	
P13	375,365.00	2,047,050.00	
P14	375,365.00	2,049,350.00	
P15	375,365.00	2,051,650.00	
P16	375,365.00	2,053,950.00	
P17	375,365.00	2,056,250.00	
P18	375,365.00	2,058,550.00	
P19	375,365.00	2,060,850.00	
P20	375,365.00	2,063,150.00	
P21	375,365.00	2,065,450.00	
P22	375,365.00	2,067,750.00	
P23	375,365.00	2,070,050.00	
P24	375,365.00	2,072,350.00	
P25	375,365.00	2,074,650.00	
P26	375,365.00	2,076,950.00	
P27	375,365.00	2,079,250.00	
P28	375,365.00	2,081,550.00	
P29	375,365.00	2,083,850.00	
P30	375,365.00	2,086,150.00	
P31	375,365.00	2,088,450.00	
P32	375,365.00	2,090,750.00	
P33	375,365.00	2,093,050.00	
P34	375,365.00	2,095,350.00	
P35	375,365.00	2,097,650.00	
P36	375,365.00	2,099,950.00	
P37	375,365.00	2,102,250.00	
P38	375,365.00	2,104,550.00	
P39	375,365.00	2,106,850.00	
P40	375,365.00	2,109,150.00	
P41	375,365.00	2,111,450.00	

**LEGEND**

- Triangulation Station as Described  $\triangle$
- Government Corner  $\diamond$
- Right of Way Centerline P.I.  $\circ$
- Calculated Tie  $\text{---}$
- California Aqueduct  $\text{---}$
- Right of Way Centerline  $\text{---}$

Scale 1" = 1000'

0 500 1000 2000 3000 4000

Coordinates, bearings and distances are based upon the California Coordinate System, Zone X  
To convert from grid to ground distance, multiply by 1.0002319  
All distances are shown in feet. To convert feet to metres multiply feet by 0.3048006

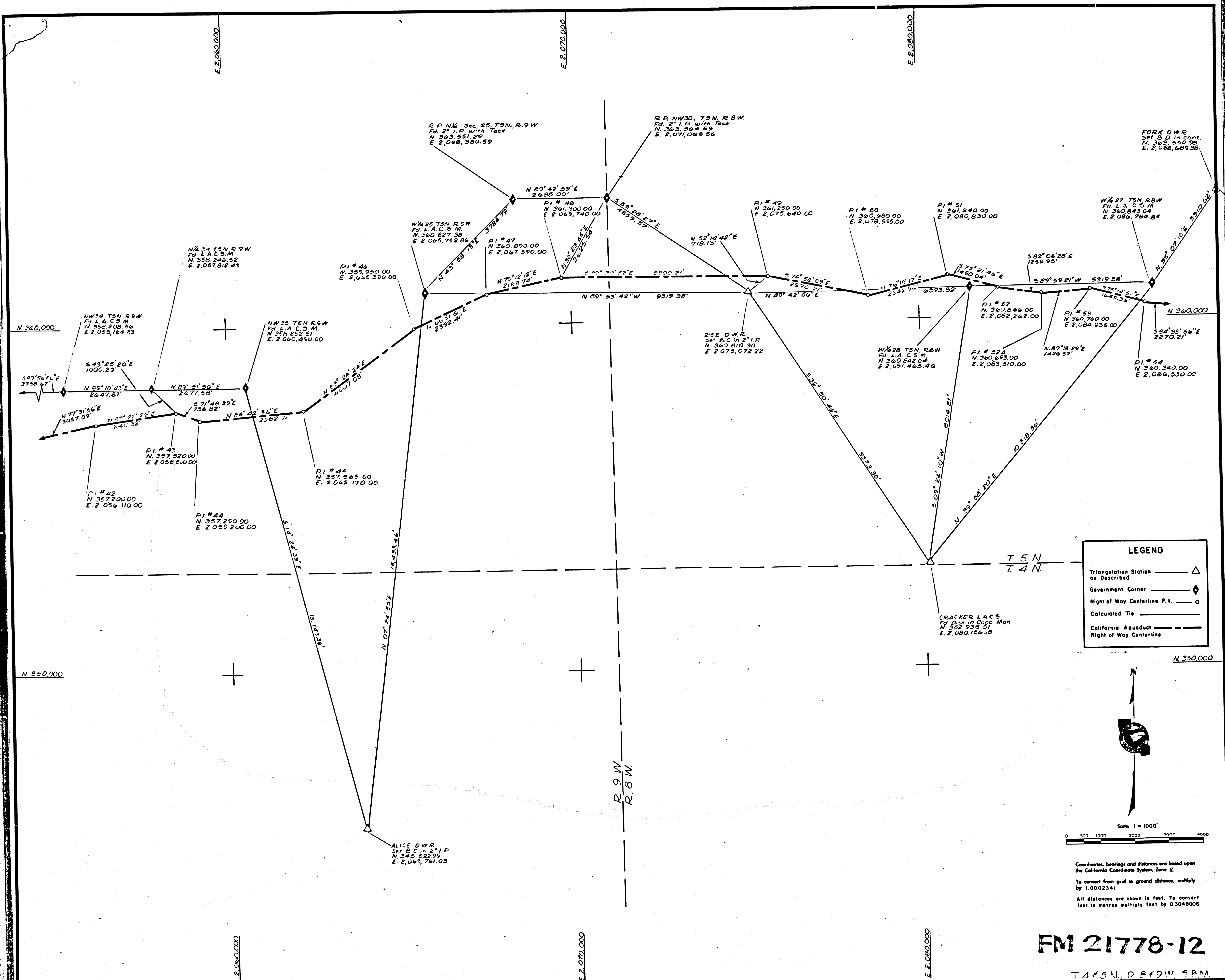
COMPILED BY: M. L. BURDY  
SUBMITTED FOR APPROVAL: *William J. Lawrence* 6-17-78  
CHECKED BY: W. J. SWERNY  
APPROVED: *John A. Parris* 6-22-78

STATE OF CALIFORNIA  
THE RESOURCES AGENCY  
DEPARTMENT OF WATER RESOURCES  
DIVISION OF LAND & RIGHT OF WAY

PRIMARY CONTROL  
RIGHT OF WAY MAP  
LOS ANGELES COUNTY

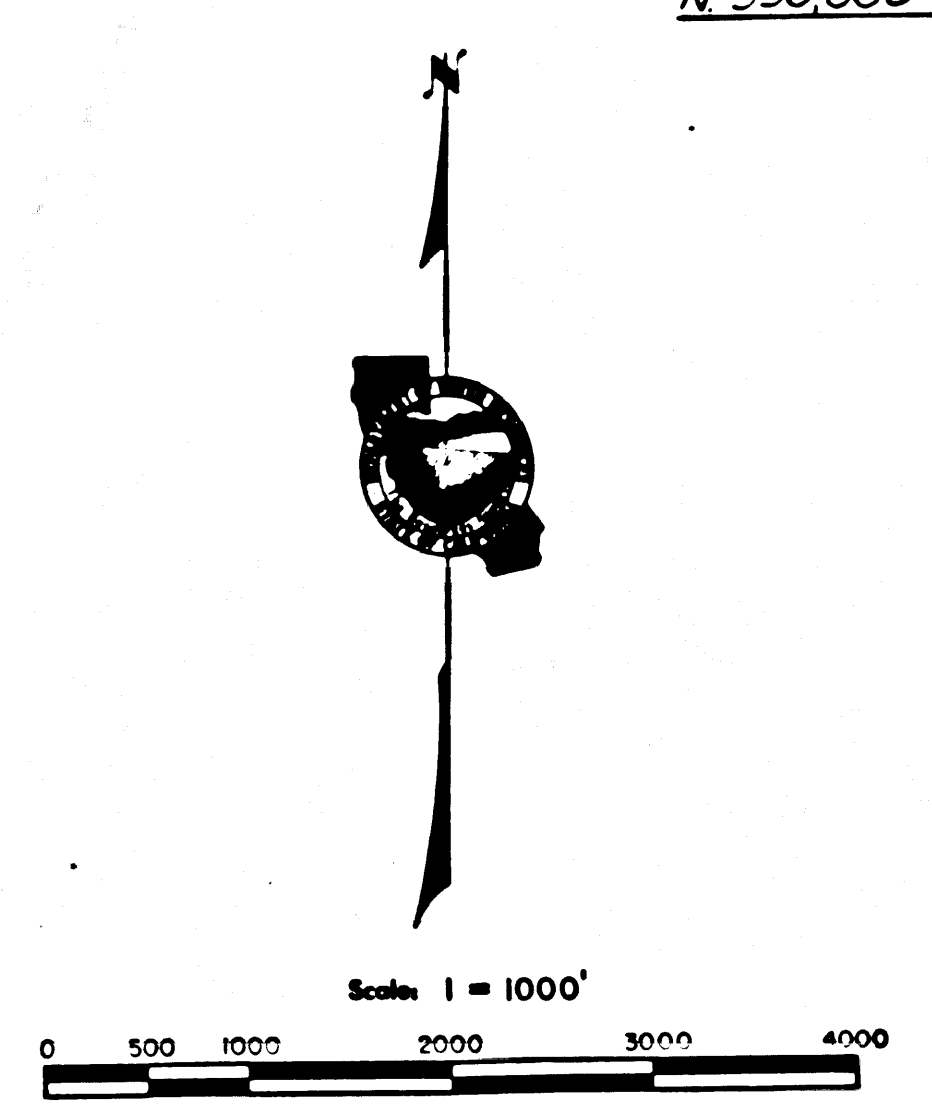
DRAWING NO. IN-19-13





**LEGEND**

- Triangulation Station as Described  $\Delta$
- Government Corner  $\diamond$
- Right of Way Centerline P.I.  $\circ$
- Calculated Tie  $---$
- California Aqueduct Right of Way Centerline  $---$



**FM 21778-12**

T45N, R29W, S8M

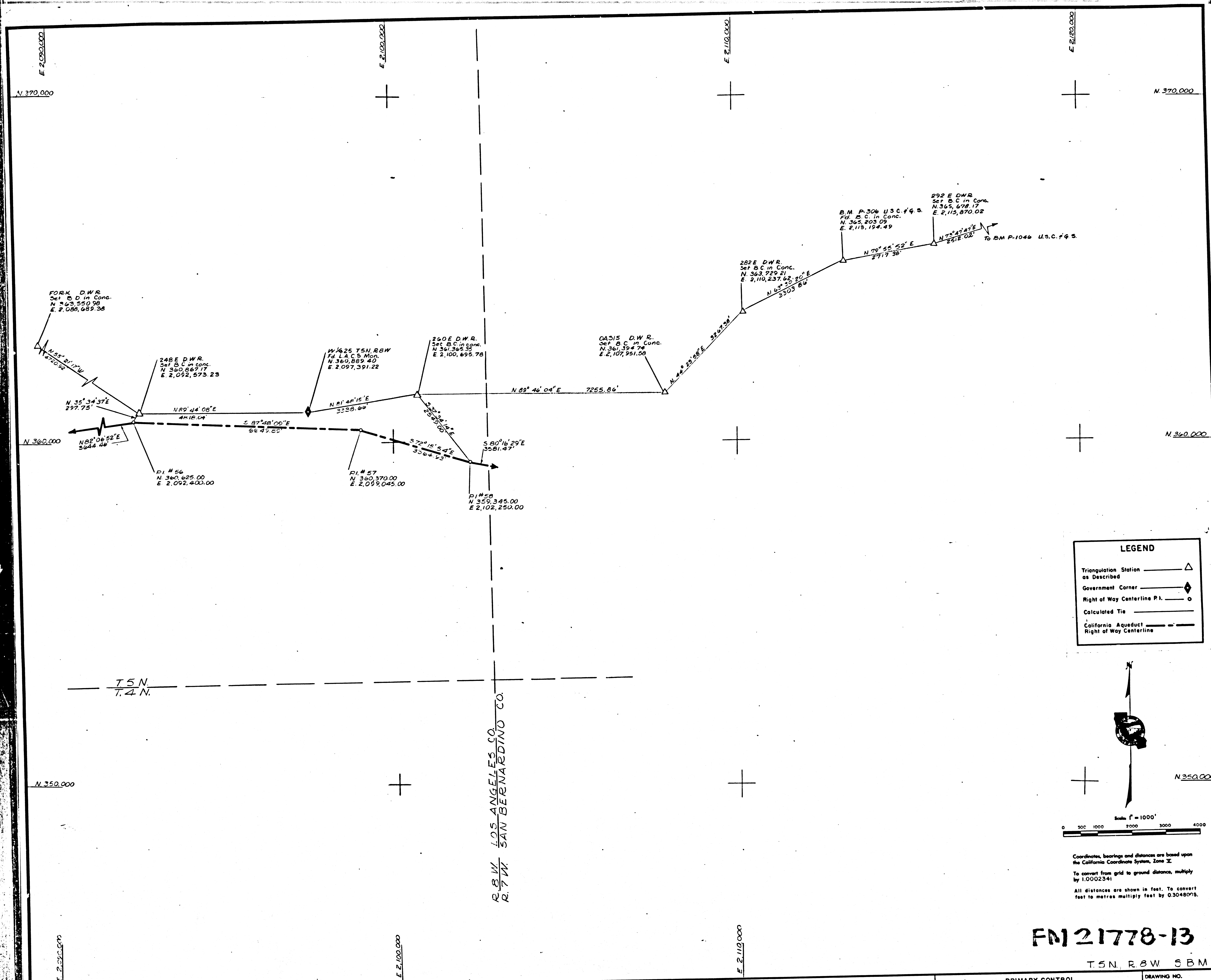
COMPILED BY: M. LIBURDY DATE: 6-8-78	SUBMITTED FOR APPROVAL: <i>[Signature]</i> 6-15-78
CHECKED BY: H.W. SURELY DATE: 6-9-78	APPROVED: <i>[Signature]</i> 6-20-78

STATE OF CALIFORNIA  
THE RESOURCES AGENCY  
DEPARTMENT OF WATER RESOURCES  
DIVISION OF LAND & RIGHT OF WAY

PRIMARY CONTROL  
RIGHT OF WAY MAP  
LOS ANGELES COUNTY

DRAWING NO.  
**IN-19-14**





**LEGEND**

- Triangulation Station as Described
- Government Corner
- Right of Way Centerline P.I.
- Calculated Tie
- California Aqueduct Right of Way Centerline

N

Scale: 1" = 1000'

Coordinates, bearings and distances are based upon the California Coordinate System, Zone X.  
 To convert from grid to ground distance, multiply by 1.0002341.  
 All distances are shown in feet. To convert feet to metres multiply feet by 0.3048006.

**FM 21778-13**  
 T.S.N. R.B.W. S.B.M.

COMPILED BY: M. LIEBER, D.Y. DATE: 6-2-78	APPROVED FOR APPROVAL: <i>William J. Sweeney</i> DATE: 6-16-78
CHECKED BY: W.J. SWEENEY DATE: 6-2-78	APPROVED: <i>William J. Sweeney</i> DATE: 6-20-78

STATE OF CALIFORNIA  
 THE RESOURCES AGENCY  
 DEPARTMENT OF WATER RESOURCES  
 DIVISION OF LAND & RIGHT OF WAY

PRIMARY CONTROL  
 RIGHT OF WAY MAP  
 LOS ANGELES COUNTY

DRAWING NO.  
**IN-19-15**