

FM21784-1

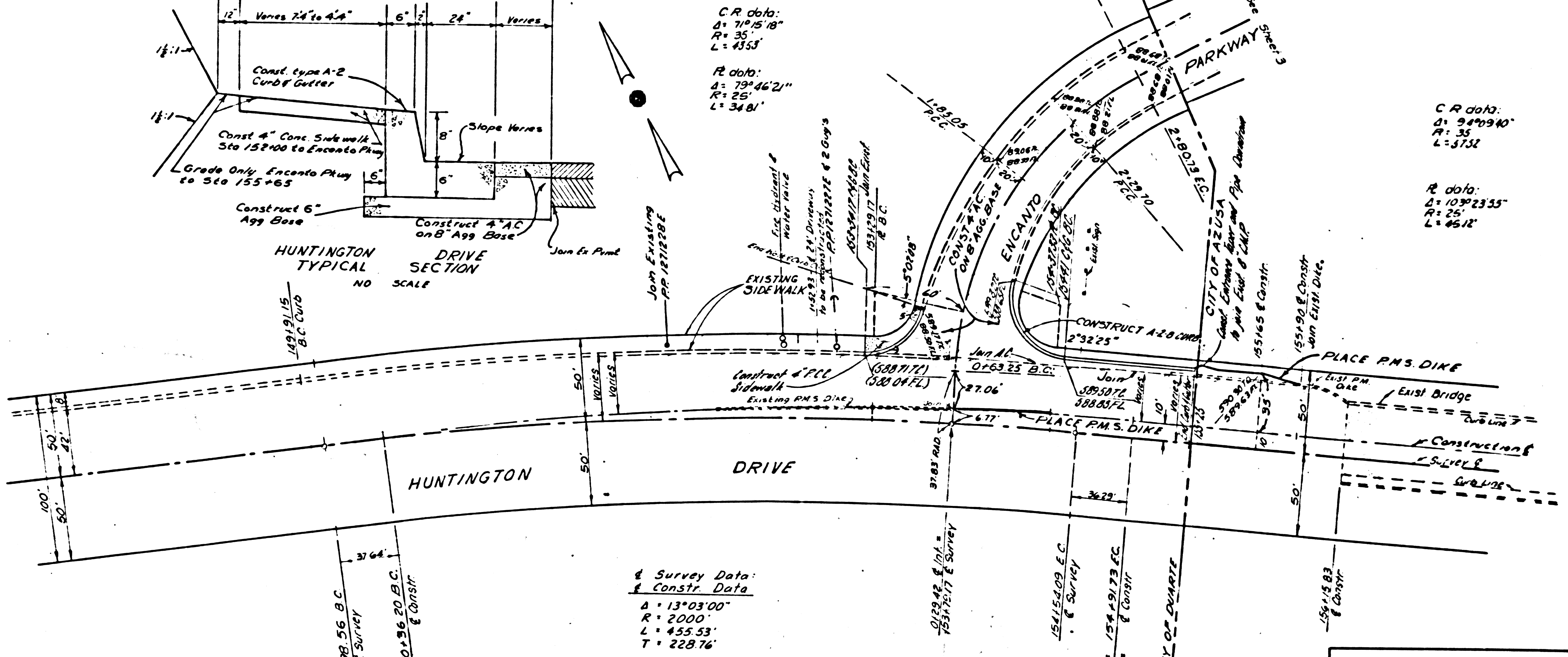
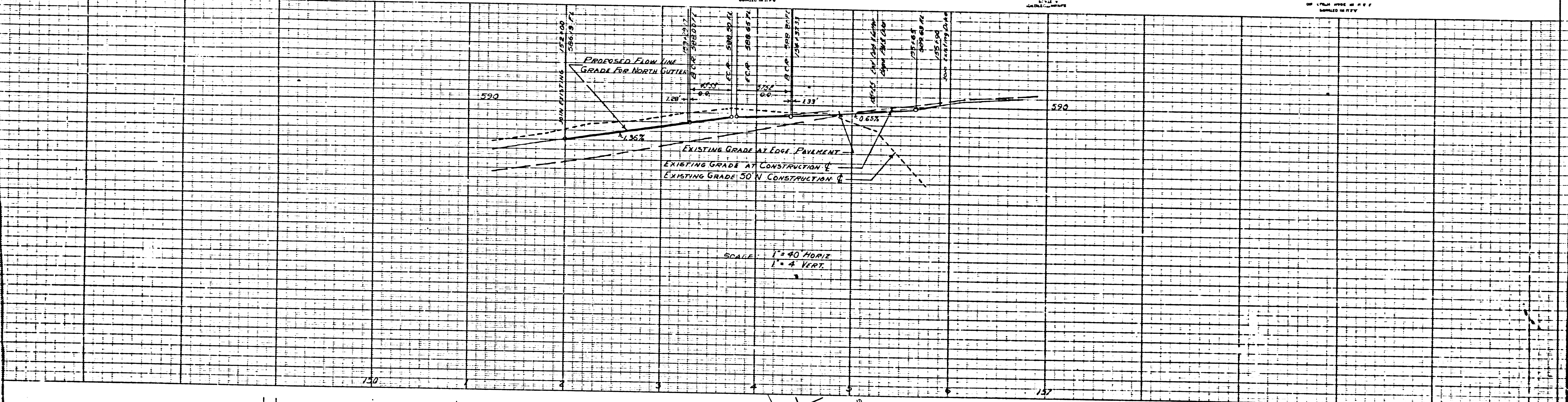
O.R. D 4037-86

BASIS OF BEARINGS:
THE WLY BOUNDARY OF A PLOT SHOWING THE SAN GABRIEL RIVER IMPROVEMENT SEGMENT B, DWG NO 102-FP, DATED 5/20/43, BY THE CORPS OF ENGINEERS, U.S. ARMY, WAS USED AS THE BASIS OF BEARINGS. SHOWN ON THIS MAP.

CITY OF AZUSA			
SCALE 1"=100'	APPROVED BY	DRAWN BY	J.T.C.
DATE DEC. 1969	CITY ENGINEER	CITY	DATE
STREET DEDICATION ENCANTO PARKWAY			
PREPARED BY H.M. SCOTT & ASSOCIATE'S ENGINEERS	DATE	BY	J.N. 424

DETAIL A

REVISED 10-27-67

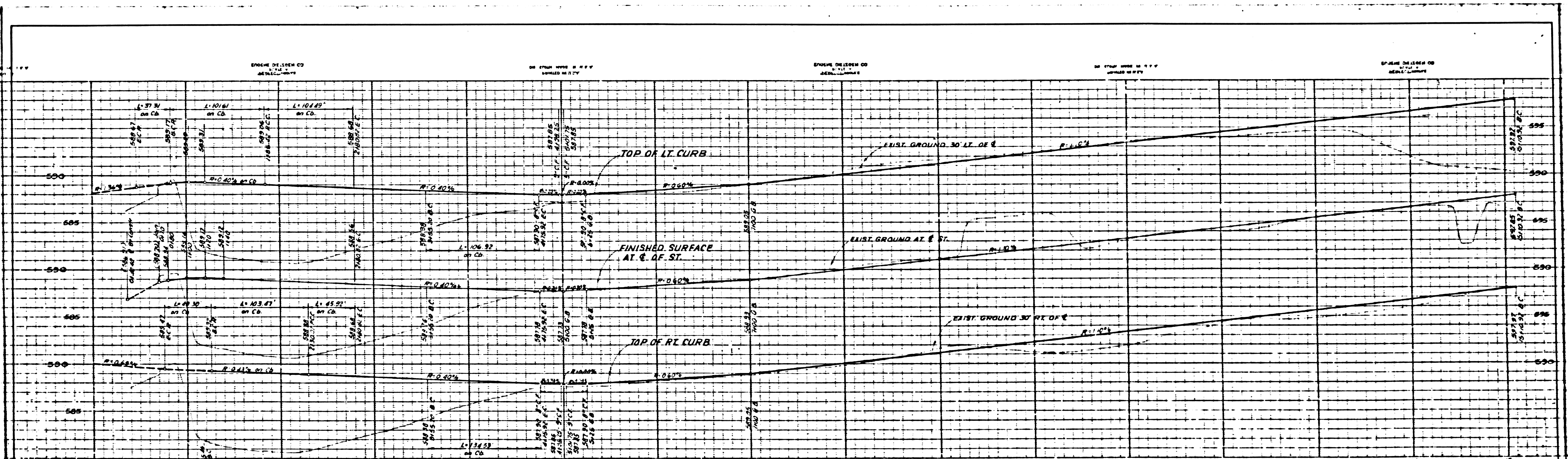


BENCH MARK:
 BM 220 - L 1 Sp. 4 Ft. From S.W. End Bridge
 N 53° 21' On Foothill Blvd. Over San Gabriel
 River 171' From Cone Railing
 (Corina - 1963) Elev 590.948

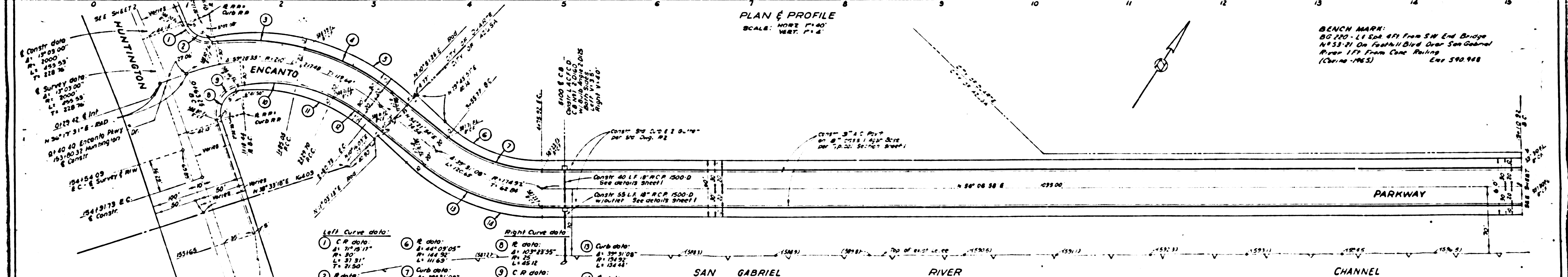
FM 21784-2

NOTE: All Stationing is based on E of Survey unless otherwise shown.

PLANS PREPARED IN THE OFFICES OF H. M. SCOTT & ASSOCIATES CIVIL ENGINEERING - SURVEYING - PLANNING		CITY OF DUARTE APPROVED BY: <i>[Signature]</i> DATE: <i>[Date]</i>		ENGINEERING DEPARTMENT CITY OF AZUSA STREET IMPROVEMENT ENCANTO PARKWAY	
DRAWN BY: <i>[Signature]</i>		APPROVED BY: <i>[Signature]</i>		DATE: _____	
CHECKED BY: <i>[Signature]</i>		PROJECT NO. _____		PLAN NO. _____	
ROBERT K. KMECKA - R.C.E. 15426		CITY ENGINEER		R.C.E. NO. 10072	
		SHT 2 OF 6 SHTS			



PLAN & PROFILE
SCALE: HORIZ. 1" = 40'
VERT. 1" = 4'



BENCH MARK:
80.220 - 4.54' from SW End Bridge
N 53° 21' On Feather II Blvd Over San Gabriel
River 17' from Conc. Paving
(Chime - 1953) Elev 590.948

- Left Curve data:
- 1) C. data: Δ: 44° 09' 05" P: 144.50' L: 104.85'
 - 2) R. data: Δ: 75° 46' 27" P: 25.81' L: 104.85'
 - 3) C. data: Δ: 37° 03' 11" P: 144.50' L: 104.85'
 - 4) C. data: Δ: 55° 46' 13" P: 144.50' L: 104.85'
- Right Curve data:
- 5) C. data: Δ: 44° 09' 05" P: 144.50' L: 104.85'
 - 6) R. data: Δ: 75° 46' 27" P: 25.81' L: 104.85'
 - 7) C. data: Δ: 37° 03' 11" P: 144.50' L: 104.85'
 - 8) C. data: Δ: 55° 46' 13" P: 144.50' L: 104.85'

FM 21784-3

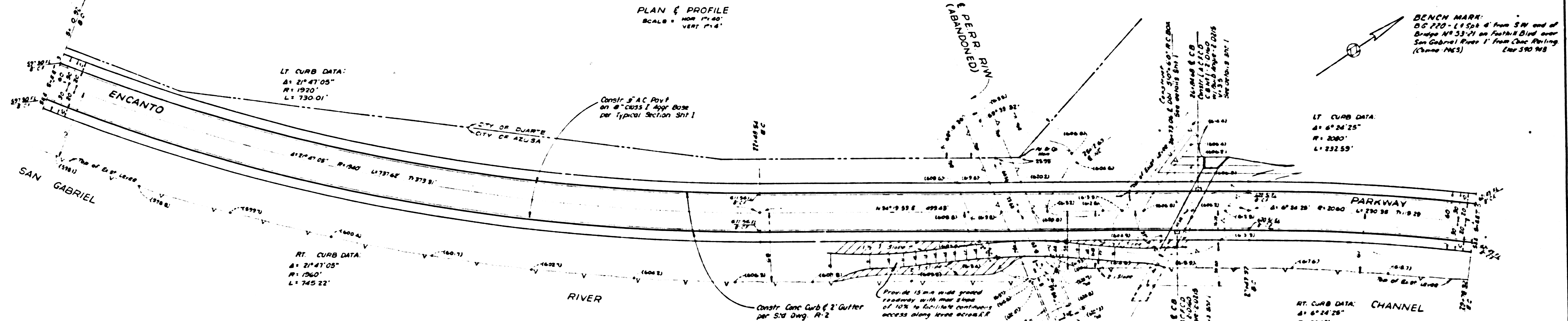
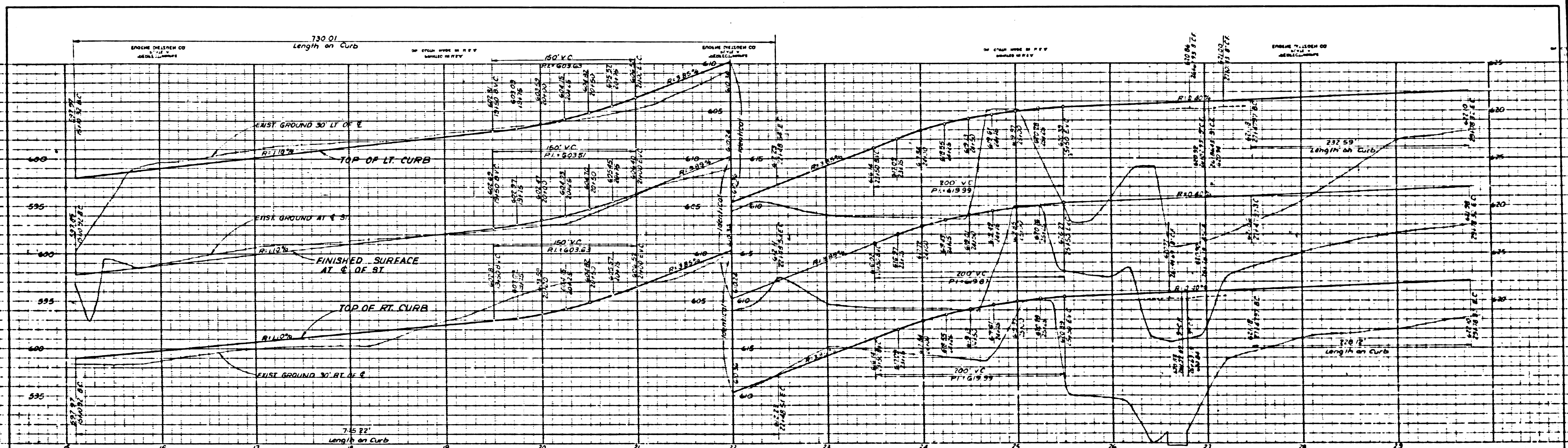
NOTE: AS BUILT

PLANS PREPARED
IN THE OFFICES OF
H. M. SCOTT & ASSOCIATES
CIVIL ENGINEERING SURVEYING PLANNING

CITY OF DUARTE
APPROVED BY: *[Signature]*
DATE: *[Date]*

ENGINEERING DEPARTMENT	
CITY OF AZUSA	
STREET IMPROVEMENT ENCANTO PARKWAY	
NO. FEETINGS BY DATE	APPROVED BY: <i>[Signature]</i>
DATE	CITY ENGINEER
DRAWN BY: <i>[Signature]</i>	PROJECT NO. 1953-1
CHECKED BY: <i>[Signature]</i>	DATE: <i>[Date]</i>

D-389-3



LT. CURB DATA:
 Δ: 21° 47' 05"
 R: 1930'
 L: 730.01'

RT. CURB DATA:
 Δ: 21° 47' 05"
 R: 1930'
 L: 745.72'

BENCH MARK:
 60720 - 1.5 ft. from SW end of Bridge No. 33-21 on Feather Blvd over San Gabriel River 1' from Chas. Riv. (Change MGS) Elev. 580.78

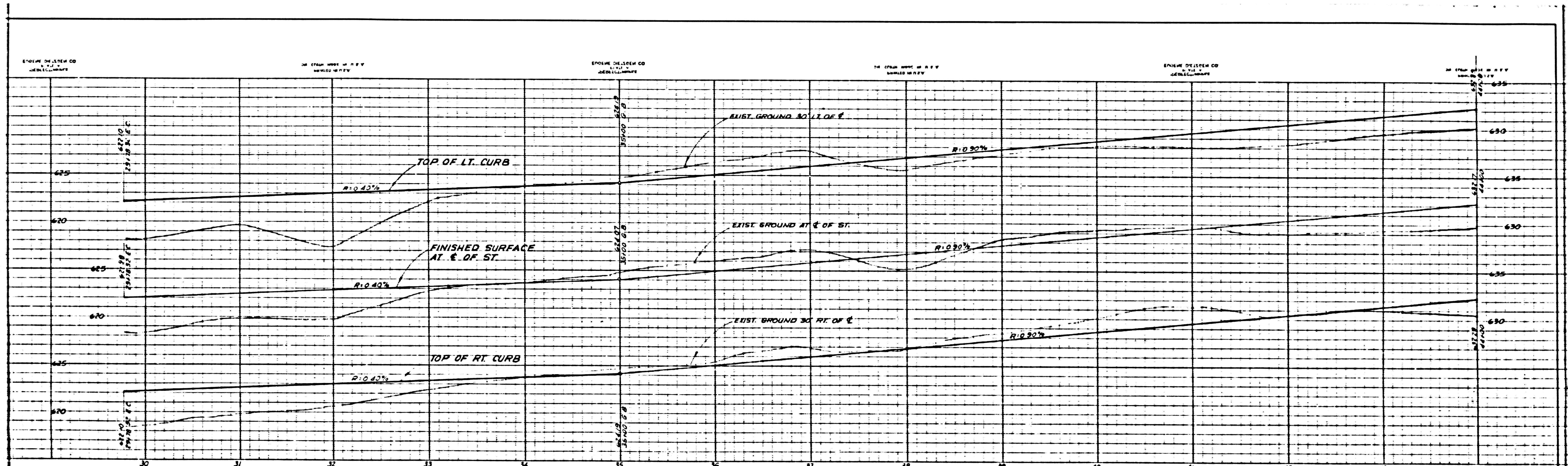
LT. CURB DATA:
 Δ: 6° 24' 25"
 R: 2080'
 L: 232.59'

RT. CURB DATA:
 Δ: 6° 24' 25"
 R: 2080'
 L: 228.18'

PLANS PREPARED
 IN THE OFFICES OF
H. M. SCOTT & ASSOCIATES
 CIVIL ENGINEERING - SURVEYING - PLANNING

FM 21784-4

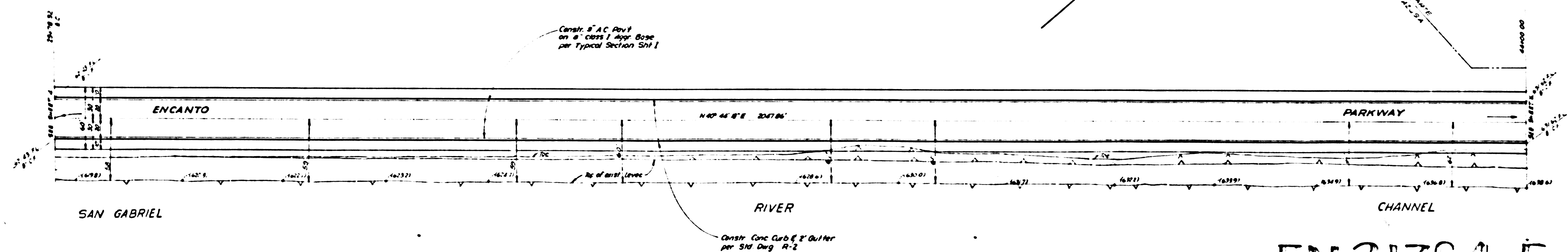
ENGINEERING DEPARTMENT CITY OF AZUSA	
STREET IMPROVEMENT ENCANTO PARKWAY	
DATE: _____	PROJECT NO.: _____
DRAWN BY: _____	BY: _____
CHECKED BY: _____	DATE: _____



BENCH MARK:
 B.M. 220 - 4.1 Sp. 4 Ft. from SW End Bridge
 49' 53" 21' On Footfall Blvd. Over San Gabriel
 River 1.71' from Curb Rating
 (Coring - 1965) Elev. 590.948

PLAN & PROFILE
 SCALE: HORIZ. 1" = 40'
 VERT. 1" = 5'

BENCH MARK:
 B.M. 220 - 4.1 Sp. 4' from SW end of
 Bridge 49' 53" 21' on Footfall Blvd. over
 San Gabriel River 1.71' from Curb Rating
 (Coring 1965) Elev. 590.948

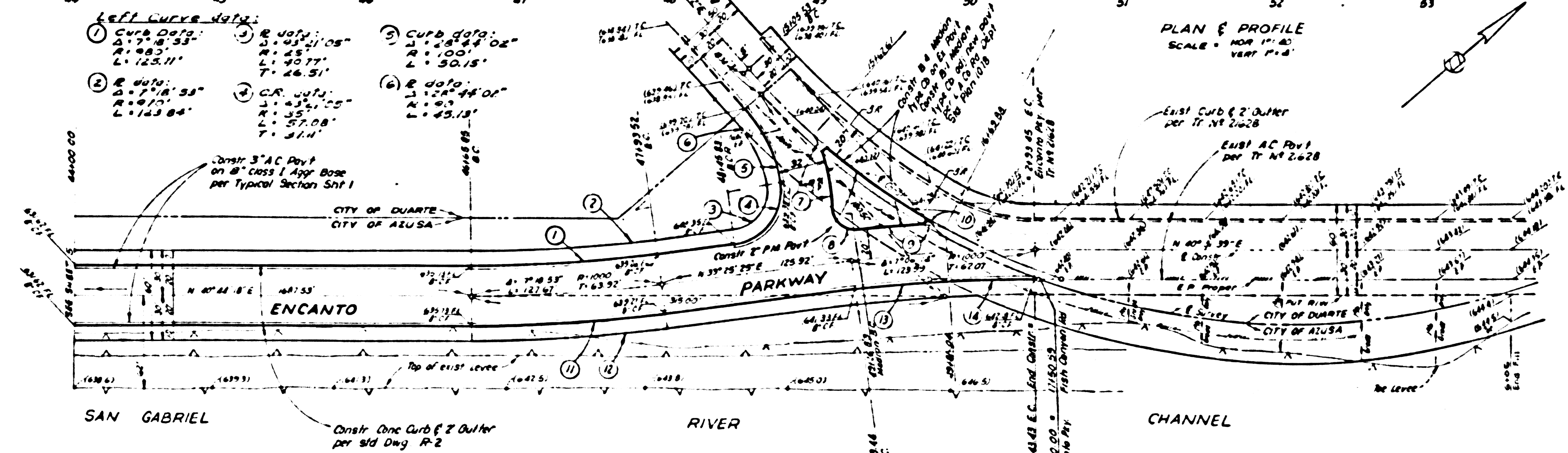
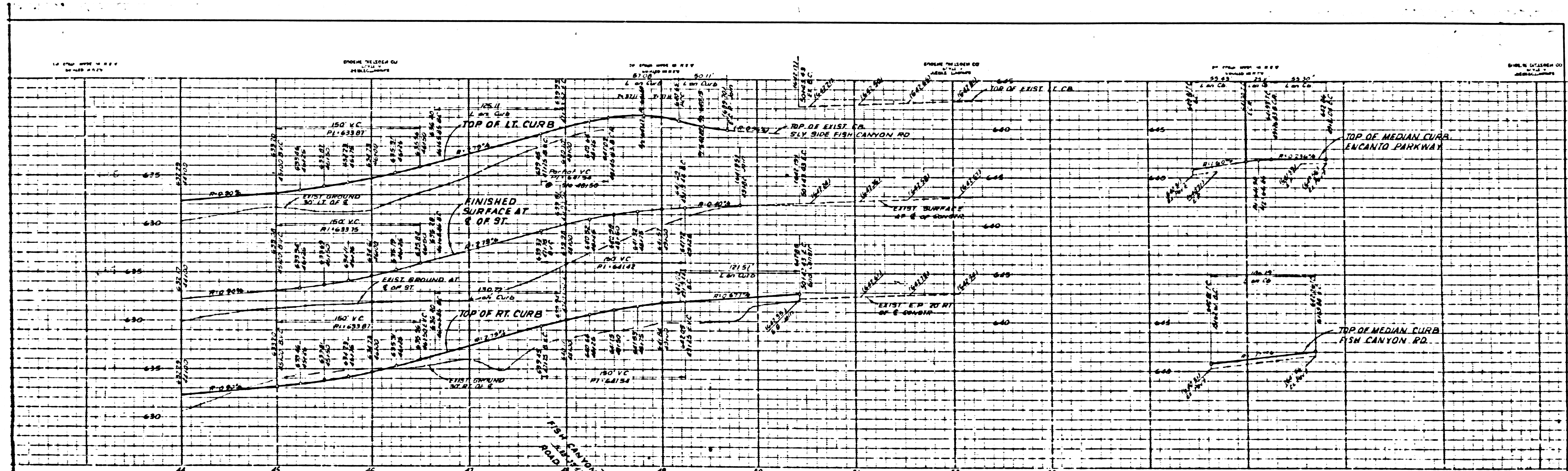


FM 21784-5

PLANS PREPARED
 IN THE OFFICES OF
H. M. SCOTT & ASSOCIATES
 CIVIL ENGINEERS - SURVEYING - PLANNING

ENGINEERING DEPARTMENT			
CITY OF AZUSA			
STREET IMPROVEMENT			
ENCANTO PARKWAY			
DESIGNED BY	CHECKED BY	DATE	APPROVED BY
DRAWN BY	CHECKED BY	DATE	APPROVED BY
PROJECT NO.	PROJECT NO.	DATE	APPROVED BY
PLAN NO.	PLAN NO.	DATE	APPROVED BY

D-3845



BENCH MARK:
 63.220 - L+1 Sta 477 From SW End Bridge #33-21
 On Foothill Blvd Over San Gabriel River
 171' From One Setting
 (Checked - 1965) ELEV 590.948

- Left Curve Data:**
- 1) Curve data: Δ = 77° 45' 53", R = 94.3, L = 125.11'
 - 2) Curve data: Δ = 77° 18' 38", R = 94.71, L = 114.84'
 - 3) Curve data: Δ = 43° 51' 08", R = 101.0, L = 76.51'
 - 4) Curve data: Δ = 35° 51' 00", R = 93.5, L = 57.08'
- Right Curve Data:**
- 1) Curve data: Δ = 28° 58' 02", R = 100.1, L = 50.15'
 - 2) Curve data: Δ = 28° 44' 00", R = 93.1, L = 42.13'
 - 3) Curve data: Δ = 71° 06' 14", R = 100.74, L = 121.51'
 - 4) Curve data: Δ = 71° 06' 14", R = 97.26, L = 120.27'

Note: The stationing on Fish Canyon Rd is based on the E of Survey

PLANS PREPARED IN THE OFFICES OF
H. M. SCOTT & ASSOCIATES
 CIVIL ENGINEERS - SURVEYING - PLANNING

CITY OF DUARTE
 APPROVED BY: [Signature]
 DATE: [Date]

ENGINEERING DEPARTMENT	
CITY OF AZUSA	
STREET IMPROVEMENT	
NO. OF REVISIONS	BY DATE
1	1
2	2
3	3
4	4
5	5
6	6
7	7
8	8
9	9
10	10
11	11
12	12
13	13
14	14
15	15
16	16
17	17
18	18
19	19
20	20
21	21
22	22
23	23
24	24
25	25
26	26
27	27
28	28
29	29
30	30
31	31
32	32
33	33
34	34
35	35
36	36
37	37
38	38
39	39
40	40
41	41
42	42
43	43
44	44
45	45
46	46
47	47
48	48
49	49
50	50
51	51
52	52
53	53
54	54
55	55
56	56
57	57
58	58
59	59
60	60
61	61
62	62
63	63
64	64
65	65
66	66
67	67
68	68
69	69
70	70
71	71
72	72
73	73
74	74
75	75
76	76
77	77
78	78
79	79
80	80
81	81
82	82
83	83
84	84
85	85
86	86
87	87
88	88
89	89
90	90
91	91
92	92
93	93
94	94
95	95
96	96
97	97
98	98
99	99
100	100

D-384-6