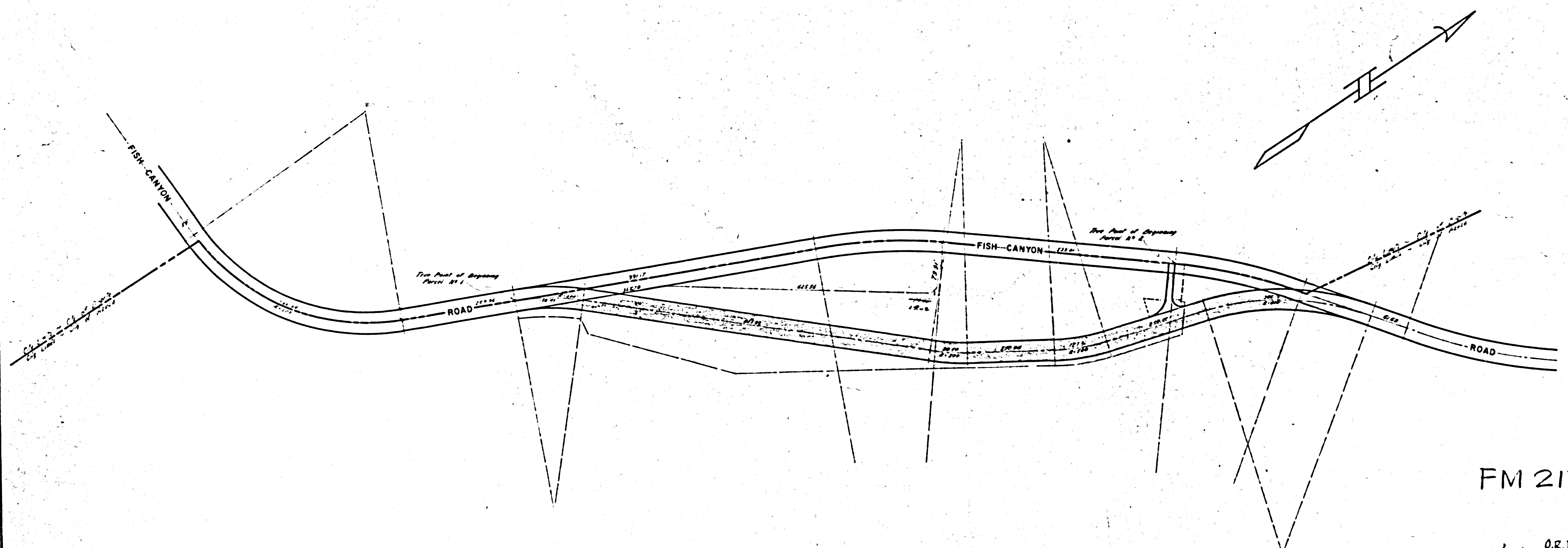


2471013



FM 21785

O.R. D1962-57		IM. 159-257	
ENGINEERING DEPARTMENT			
CITY OF AZUSA			
DATE	DESIGNED BY	DATE	DRAWN BY
MAY 1962			R.H.
SCALE	CHECKED		
1" = 100'			
REFERENCE: Fish Canyon Road Area			
NO.	BY	DATE	REVISIONS