

MAP OF
MALIBU RANCH
 AND
ADJOINING PROPERTY

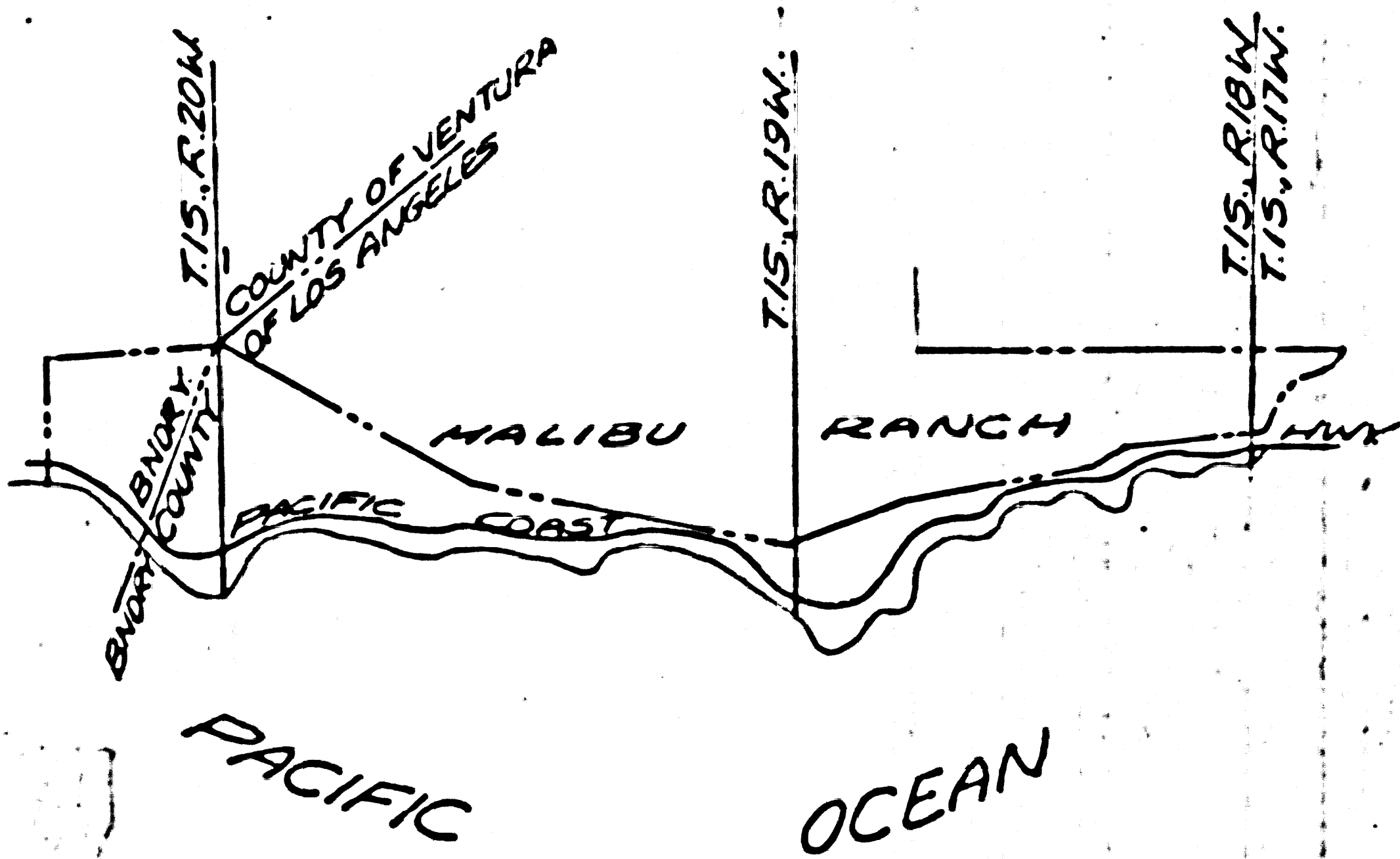
OWNED BY
 M.K.RINDGE R.RINDGE S.K.RINDGE & F.H.RINDGE

Showing Surveys of Ranch Boundaries and Patented Lands Surveyed
 under direction of F.G.Dessery by G.C.FitzGerald Jan-Oct 1912

Map by G.C.F.G.
 V.F.A.

Scale 1" = $\frac{700'}{600}$

Field Books Nos. T-121-133-142-143-144-167
 Complete map comprises 11 sheets.



This enhanced Map set consisting of cover sheet and 10 other sheets was prepared from data in the possession of Mr. Mario C. Quiros (Calif L.S.-2743).

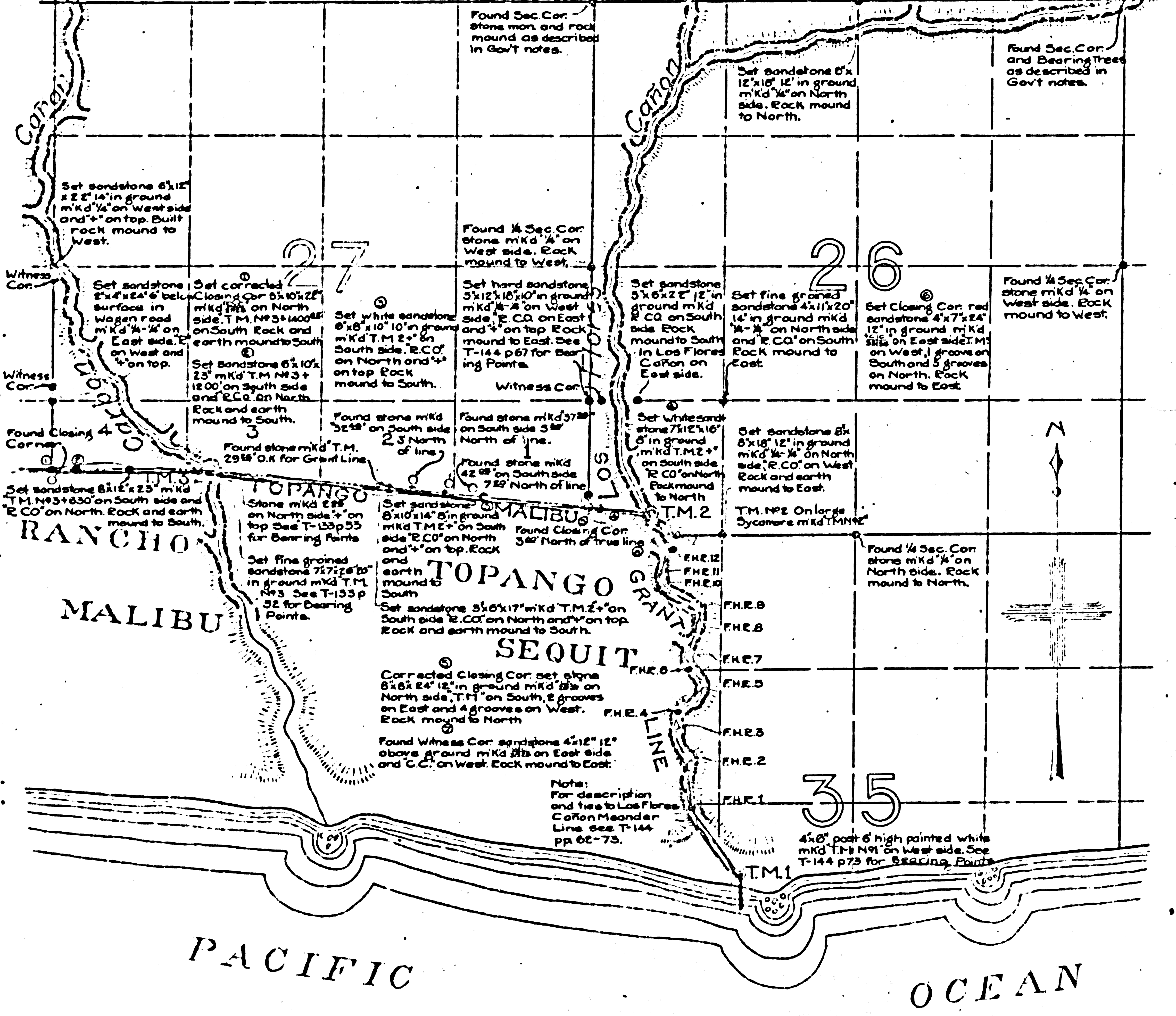
R.J. Mitchell
 R.J. Mitchell
 November 1979

FM 21799-1

Drawing No 5094

F 23

TOWNSHIP 1 SOUTH RANGE 17 WEST



(SEE SHEET N#2)

Note:
For description
and fee to Los Flores
Cajon Meander
Line See T-144
pp 62-75.

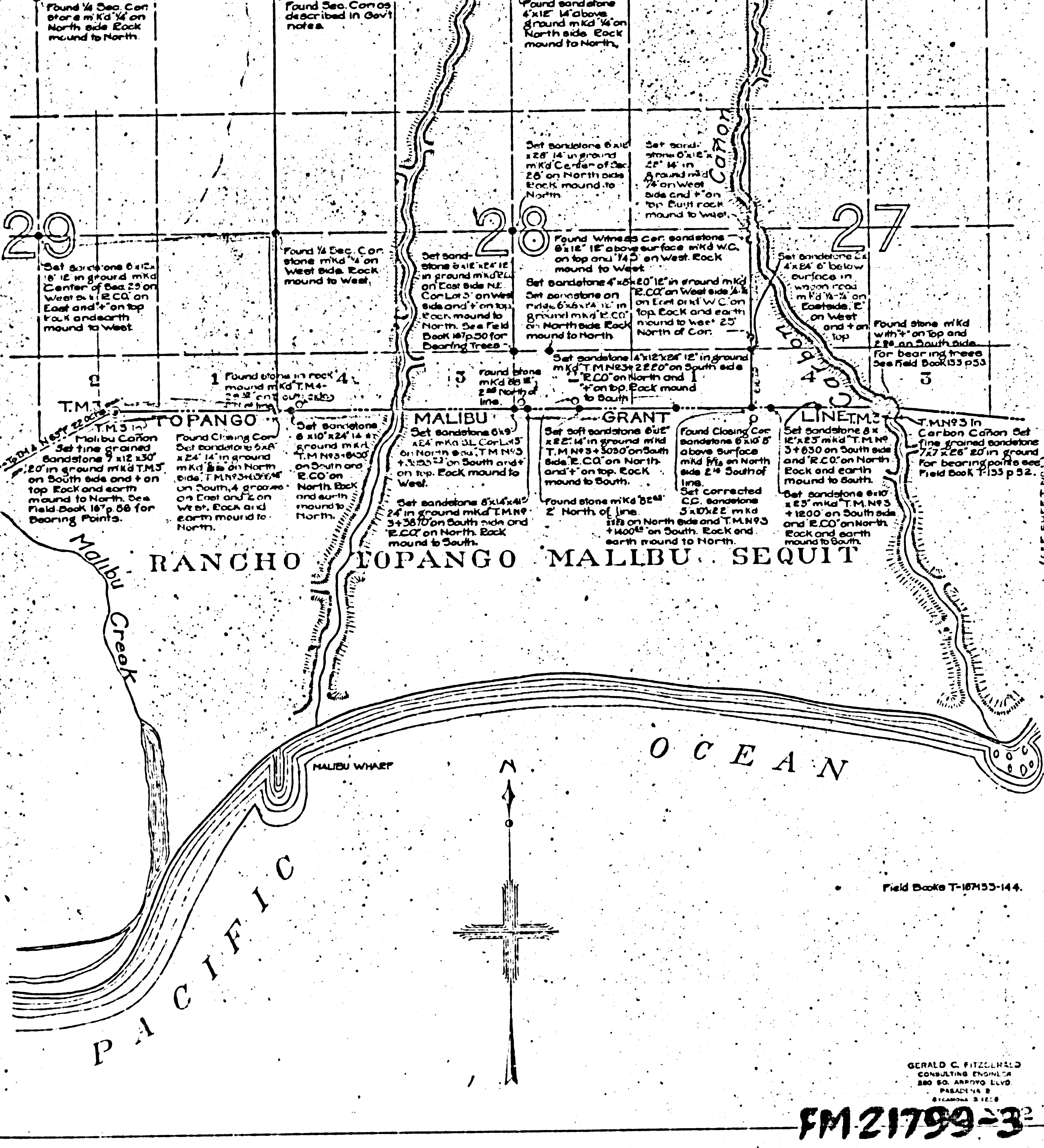
Field Books Nos. T-133
144-167

GERALD C. FITZGERALD
CONSULTING ENGINEER
200 SO. ANGELES ST.
PASADENA 4
CALIFORNIA

FM 21799-2

TOWNSHIP 11 SOUTH

RANGE 17 WEST

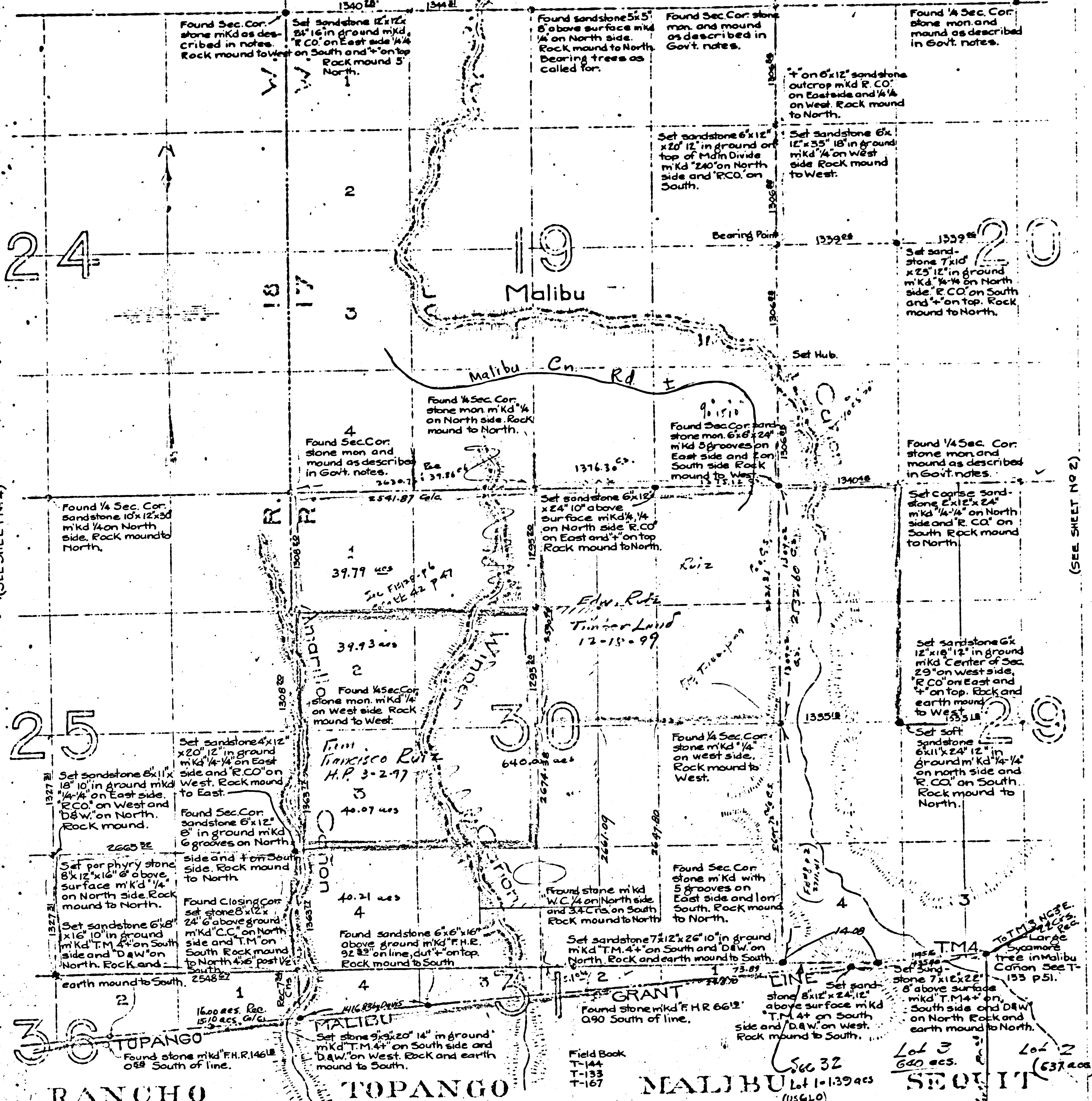


Field Books T-16755-144.

GERALD C. FITZGERALD
CONSULTING ENGINEER
280 SO. ARROYO BLVD
PASADENA 14, CALIF.

FM 21799-32

T. 1 S. R. 18 W. TOWNSHIP 1 SOUTH RANGE 17 WEST



RANCHO TOPANGO

MALIBU

FM 21799-40.3

(SEE SHEET NO 1)

(SEE SHEET NO 2)

Field Book
T-144
T-133
T-167

Sec 32
Lot 1-139 a.c.s
(U.S.G.L.O.)

Lot 3
600 a.c.s.
Lot 2
(337 a.c.s)

TOWNSHIP 1 SOUTH RANGE 18 WEST

22

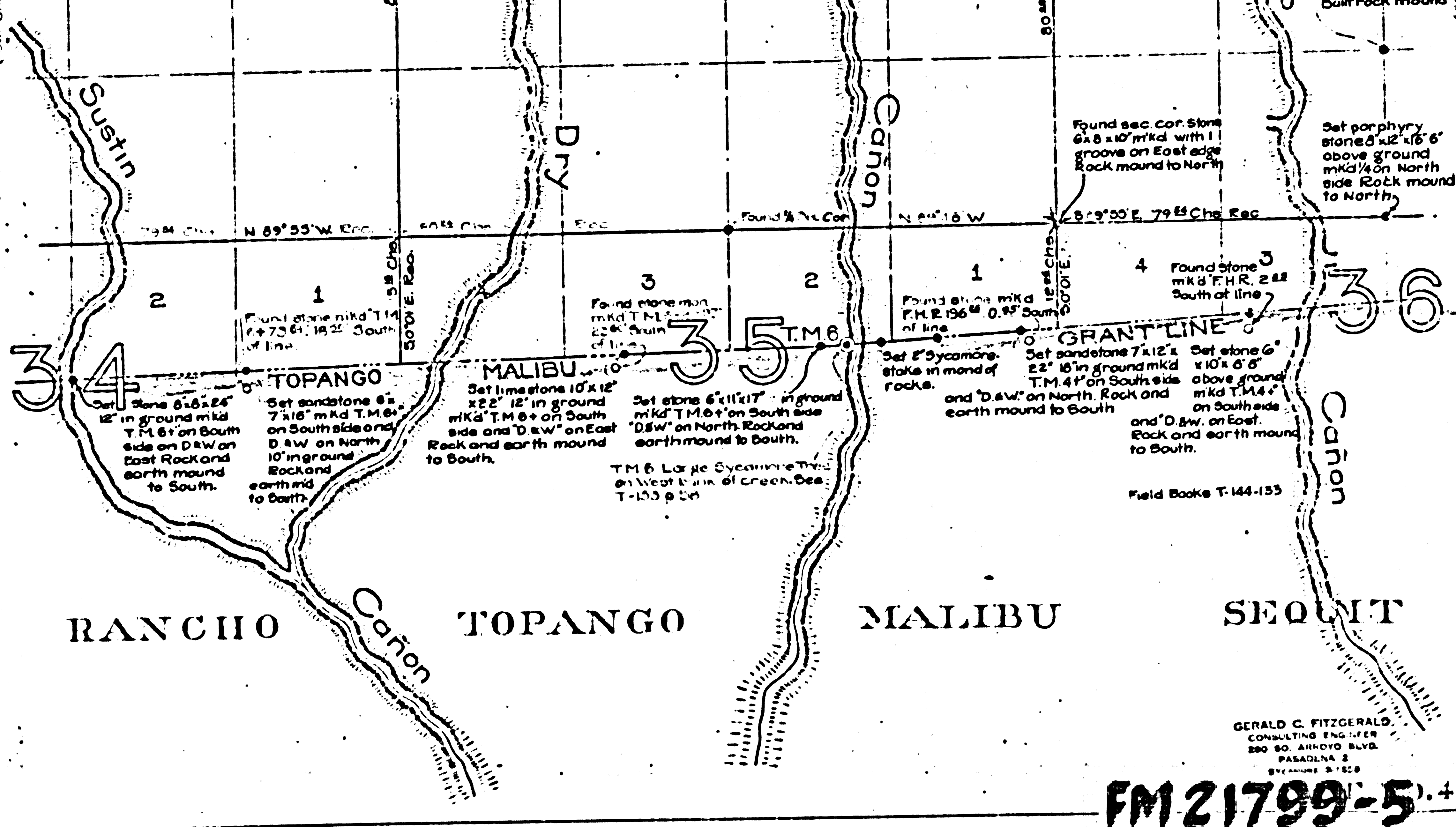
23

24

27

26

25



RANCHO

TOPANGO

MALIBU

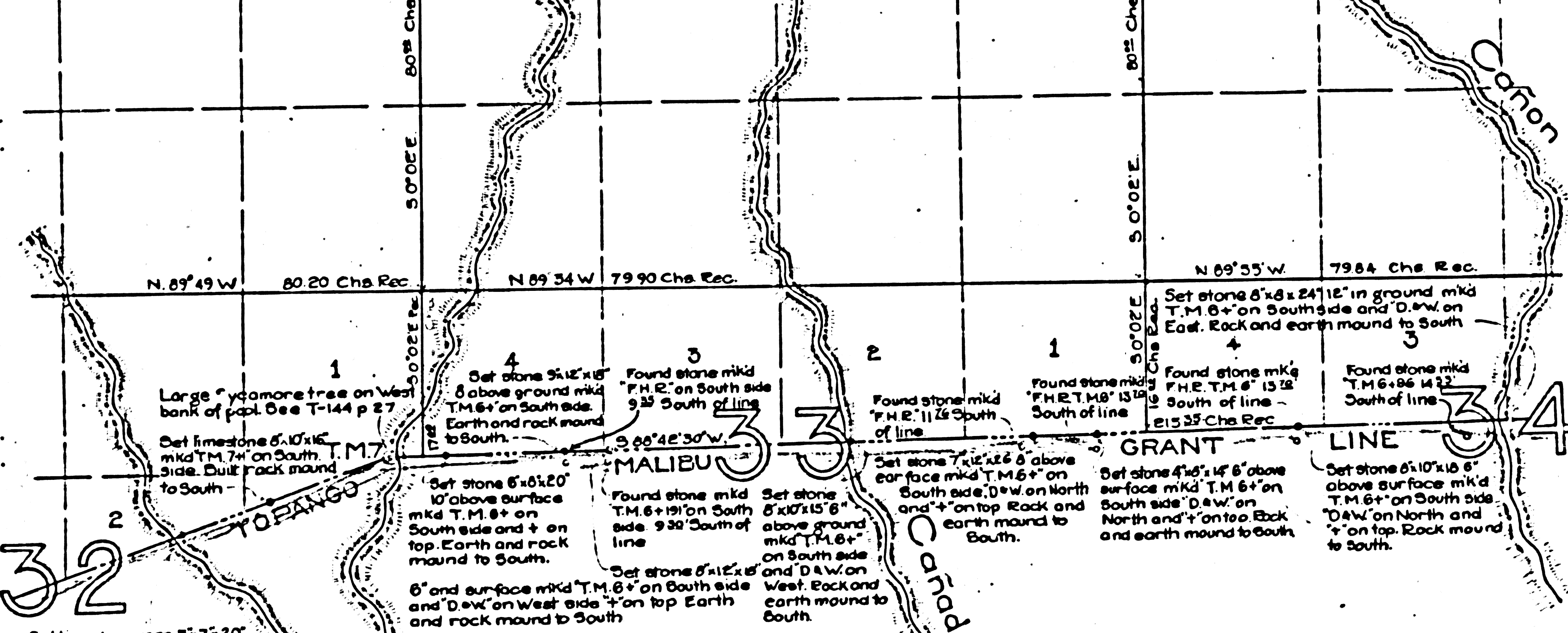
SEQUIT

GERALD C. FITZGERALD,
CONSULTING ENGINEER
280 SO. ARROYO BLVD.
PASADENA 2
CALIFORNIA 91109

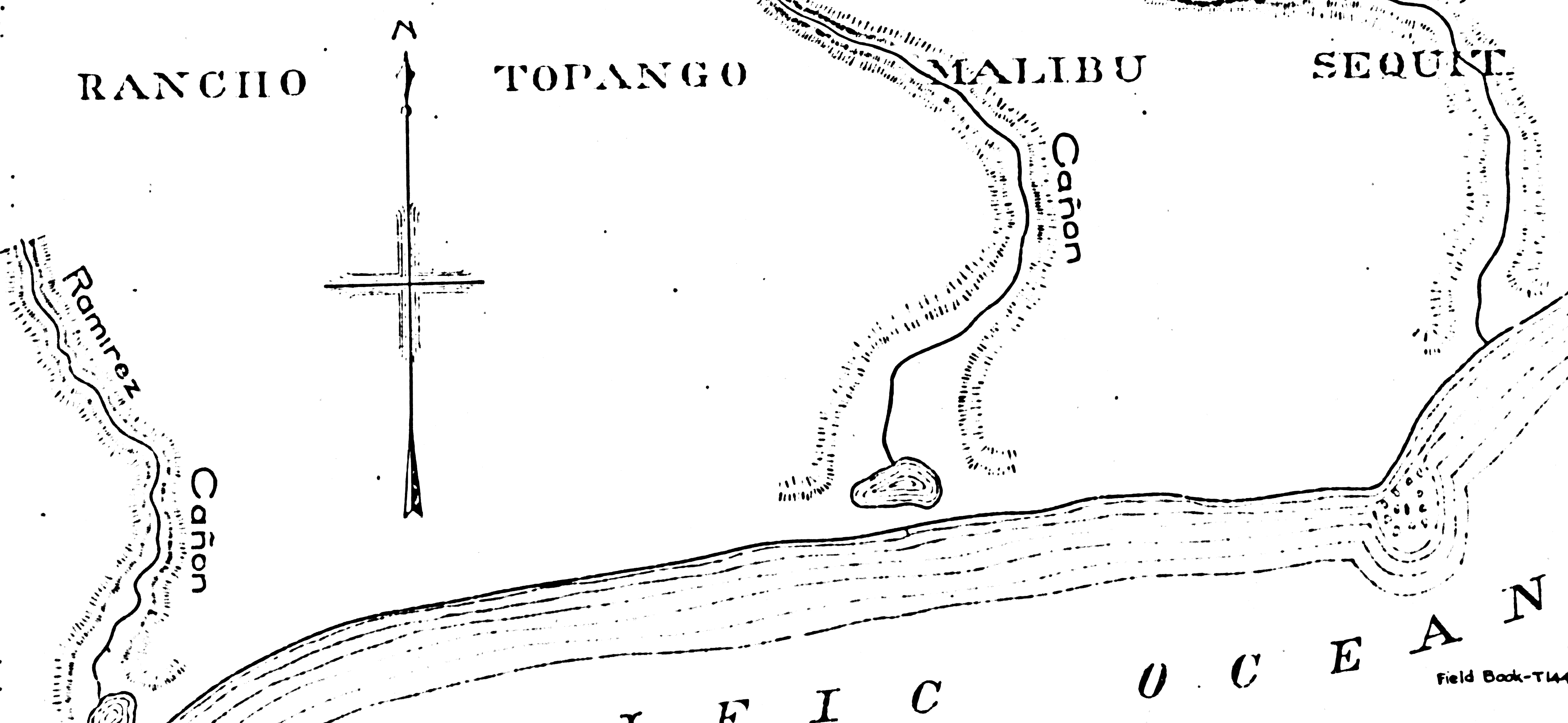
FM 21799-5.4

TOWNSHIP 1 SOUTH RANGE 18 WEST

29 28 27



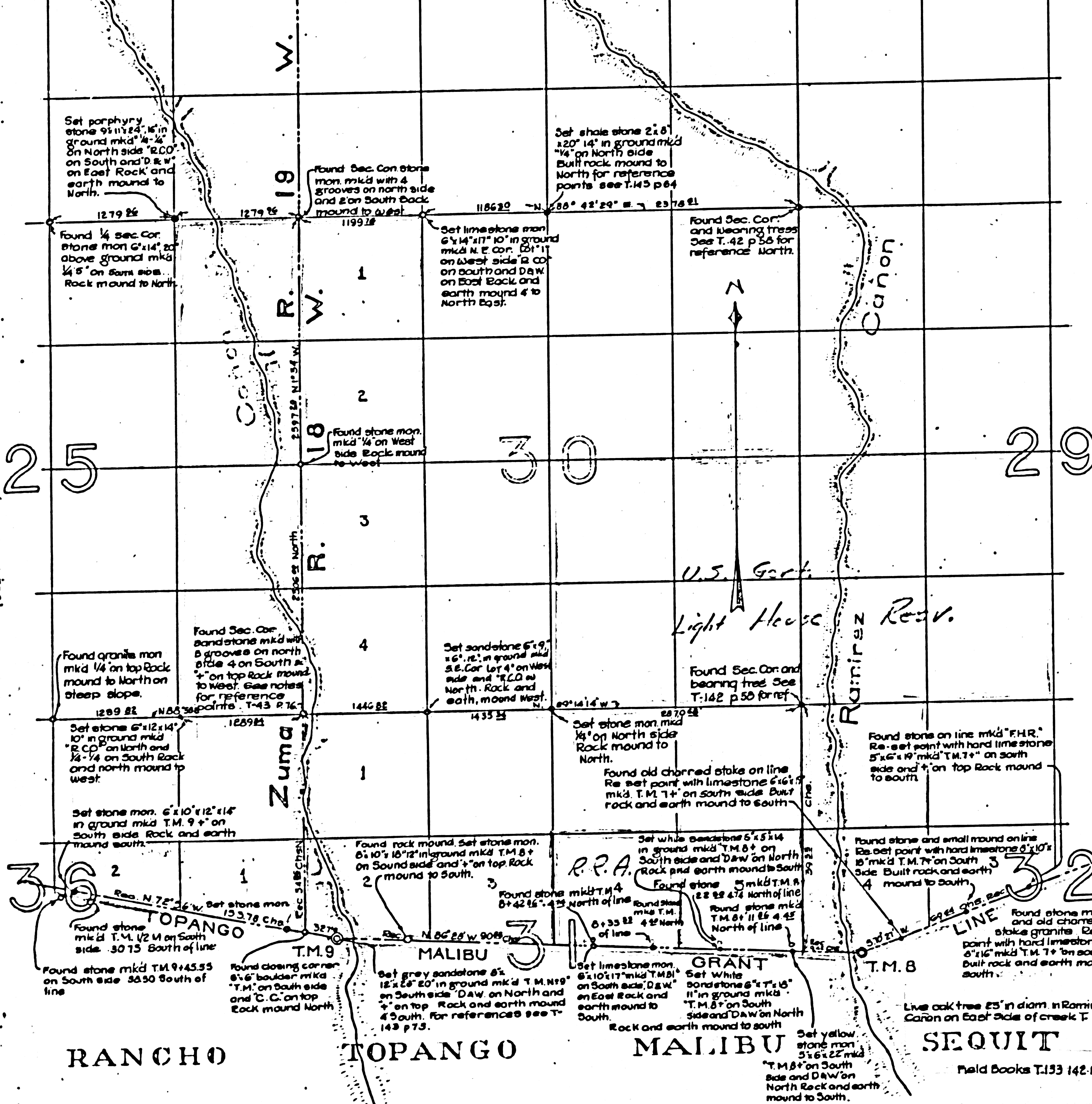
Large Pycnomere trees on West bank of pool. See T-144 p 27.
Set limestone 6.10x16 mkd T.M. 7' on South side. Bull rock mound to South.
Set stone 5.12x18 8' above ground mkd T.M. 6' on South side. Earth and rock mound to South.
Found stone mkd F.H.E. on South side 9.33' South of line.
Set stone 7.12x16 8' above surface mkd T.M. 6' on South side. D.W. on North and 'x' on top. Rock and earth mound to South.
Found stone mkd F.H.E. T.M. 6' 13.12' South of line.
Set stone 6.10x16 6' above surface mkd T.M. 6' on South side. D.W. on North and 'x' on top. Rock and earth mound to South.
Found stone mkd T.M. 6' on South side 9.33' South of line.
Set stone 5.12x18 8' on South side and D.W. on West. Rock and earth mound to South.
Set stone 6.10x16 6' on South side and D.W. on West side 'x' on top. Earth and rock mound to South.
Set stone 5.12x18 8' on South side and D.W. on West. Rock and earth mound to South.
Set stone 6.10x16 6' above surface mkd T.M. 6' on South side. D.W. on North and 'x' on top. Rock and earth mound to South.
Found stone mkd T.M. 6' on South side 'x' on top. Rock mound to South.



RANCHO TOPANGO MALIBU SEQUIE
PACIFIC OCEAN
Field Book-T144
GERALD C. FITZGERALD
CONSULTING ENGINEER
280 SO. ARROYO BLVD.
PASADENA 2
CALIF. 91101
1953

FM 21799-6.5

T. 1 S. R. 19 W. TOWNSHIP SOUTH RANGE 18 WEST



(SEE SHEET NO 7)

(SEE SHEET NO 5)

RANCHO

TOPANGO

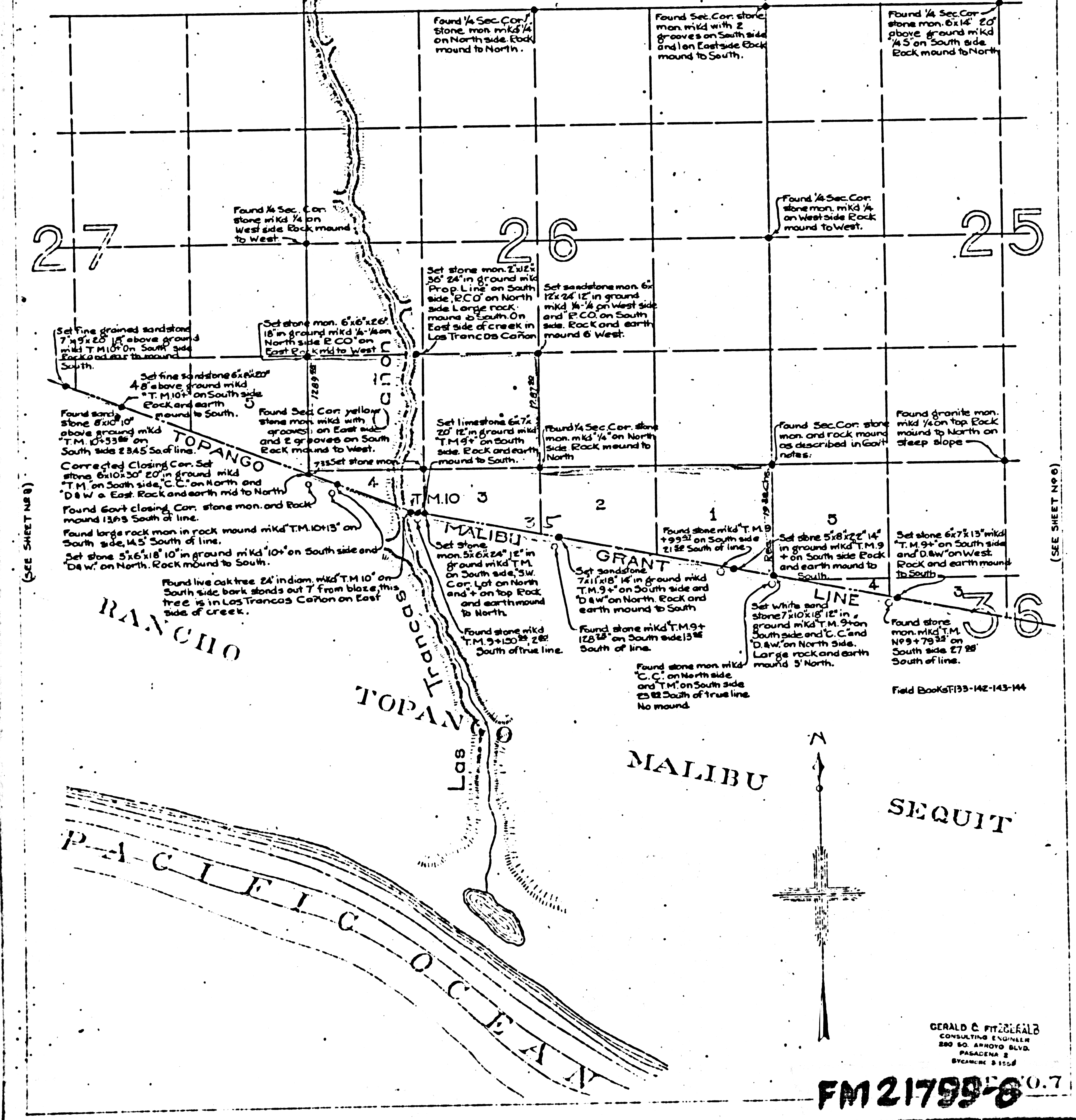
MALIBU

SEQUIT

FM 21799-7 NO. 6

Field Books T.133 142-143-144

TOWNSHIP 1 SOUTH RANGE 19 WEST



(SEE SHEET 148)

(SEE SHEET 149)

GERALD & FITZGERALD
CONSULTING ENGINEER
280 SO. ARROYO BLVD.
PASADENA 2
CALIFORNIA 91104

FM 21799-6 10.7

TOWNSHIP 1 SOUTH

RANGE 18 WEST

20

21

22

29

4775 Chs. W. Rec. 9.0945' W. 8010 Chs. Rec. 8015 Chs. 9.0950' W. Rec.

Found stone mon. mkd F.H.R. on ridge 10.29 South of line.

Found sandstone mon. 12x12 mkd 200 on North side and T.M. on South 103 South of line.

Found sandstone 6x7 mkd T.M. on South side and 3 grooves on East Rock mound to North; witness tree 4.30 South of line.

Found stone mon. 10x15 mkd T.M. 10+ 160 on South 840 South of line.

Found stone mon. mkd F.H.R. on high ridge West of Encinal Cañon; 8.09 South of line.

Found sandstone mon. mkd T.M. 104 on South side in Encinal Cañon 12.55 South of line.

Found sandstone mon. 6x6 mkd T.M. on South side 3 grooves on East and O.C. on top 15.52 South of line.

Set fine grained sandstone 7x8 x20 above ground mkd T.M. 104 on South side. Rock and earth mound to South.

Field Book T-133

RANCHO

TOPANGO

ENCINAL

GRANT LINE

SECRET

Lu Chuza



PACIFIC OCEAN

GERALD C. FITZGERALD CONSULTING ENGINEER 280 SO. ARROYO BLVD. PASADENA 2 CALIFORNIA 91106

FM 21799-9 TO B

T.1.S. R.20W.

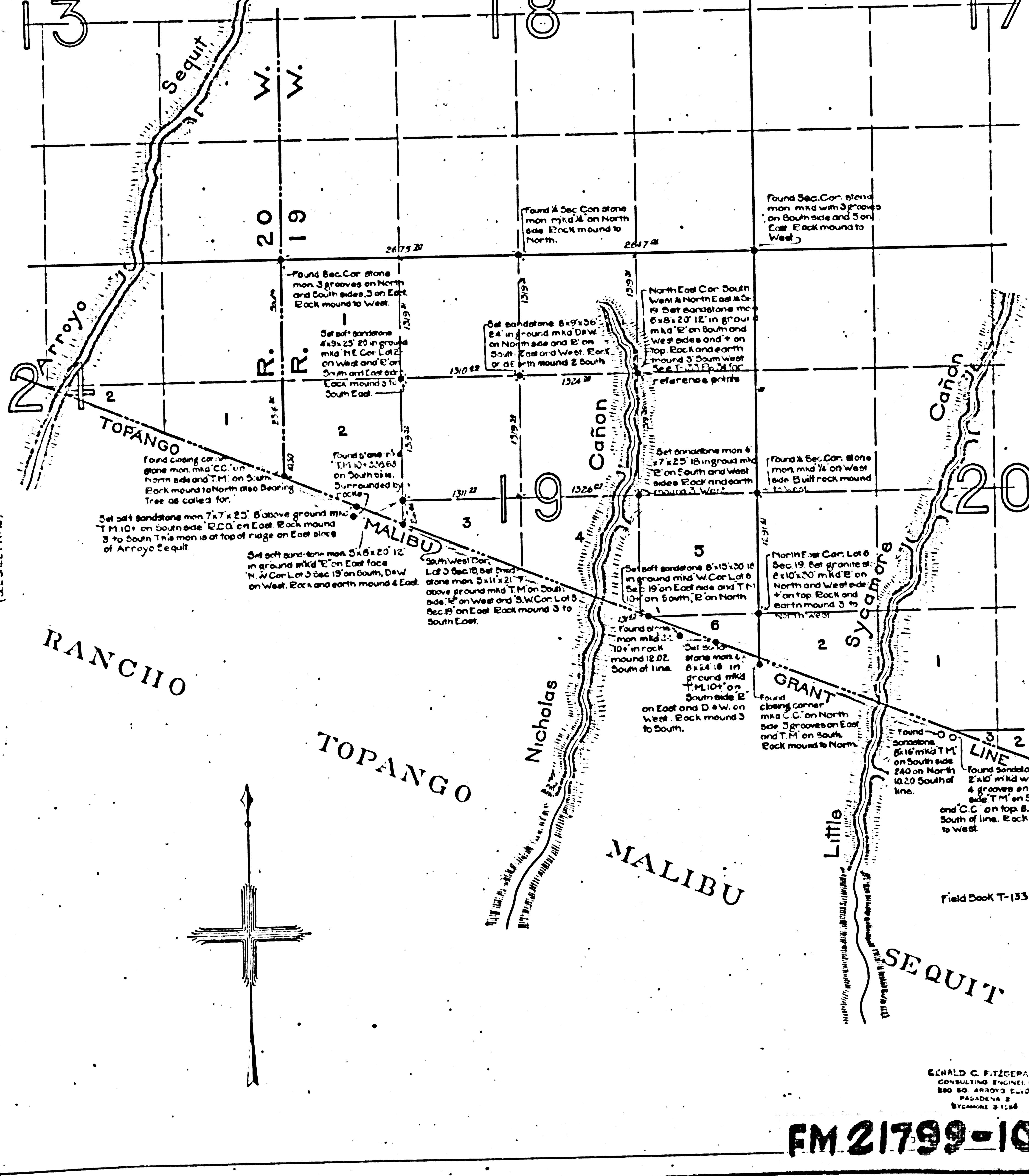
TOWNSHIP 1 SOUTH

RANGE 19 WEST

13

18

17



(SEE SHEET 10)

(SEE SHEET 6)

RANCHO

TOPANGO

MALIBU

SEQUIT

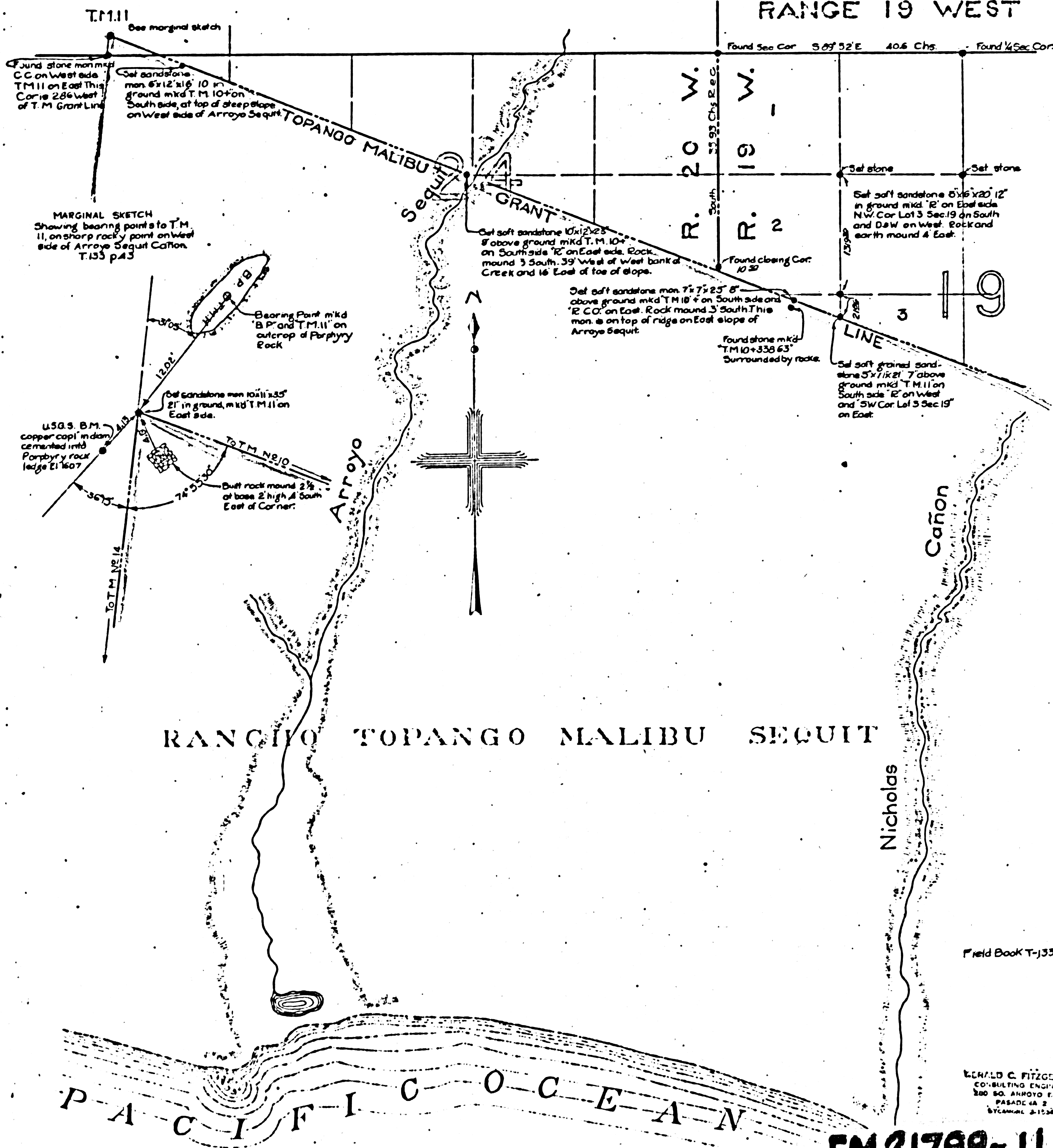
EDWARD C. FITZGERALD
 CONSULTING ENGINEER
 220 SO. ARROYO BLVD.
 PASADENA 2
 CALIFORNIA 91104

FM 21799-10 9

TOWNSHIP 1 SOUTH

RANGE 20 WEST

TOWNSHIP 1 SOUTH
RANGE 19 WEST

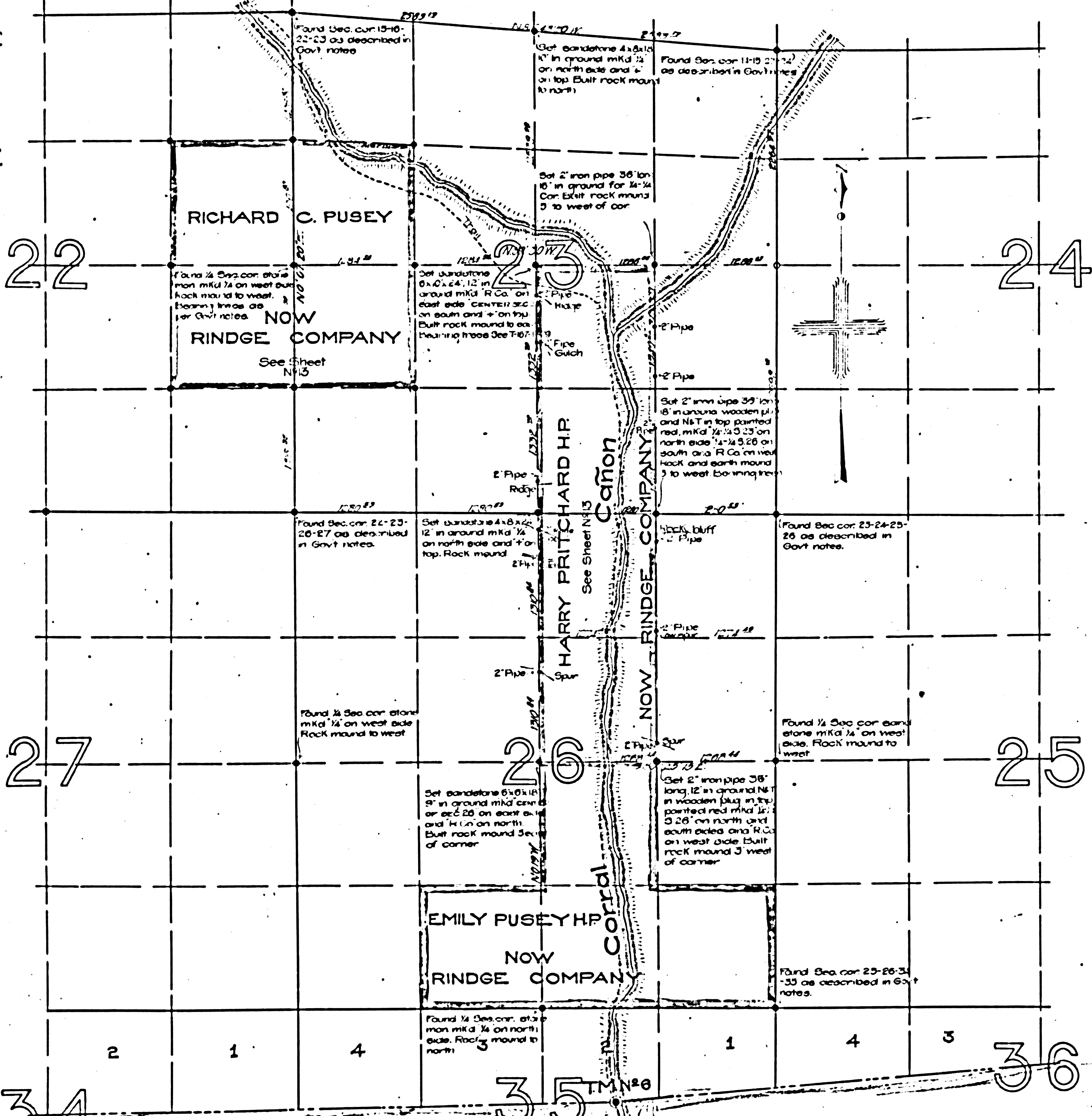


Field Book T-335

ERNEST C. FITZGERALD
CONSULTING ENGINEER
220 SO. ARROYO BLVD
PASADENA 2
CALIFORNIA 91106

FM 21799-11 10

TOWNSHIP 1 SOUTH RANGE 18 WEST S.B.B&M.



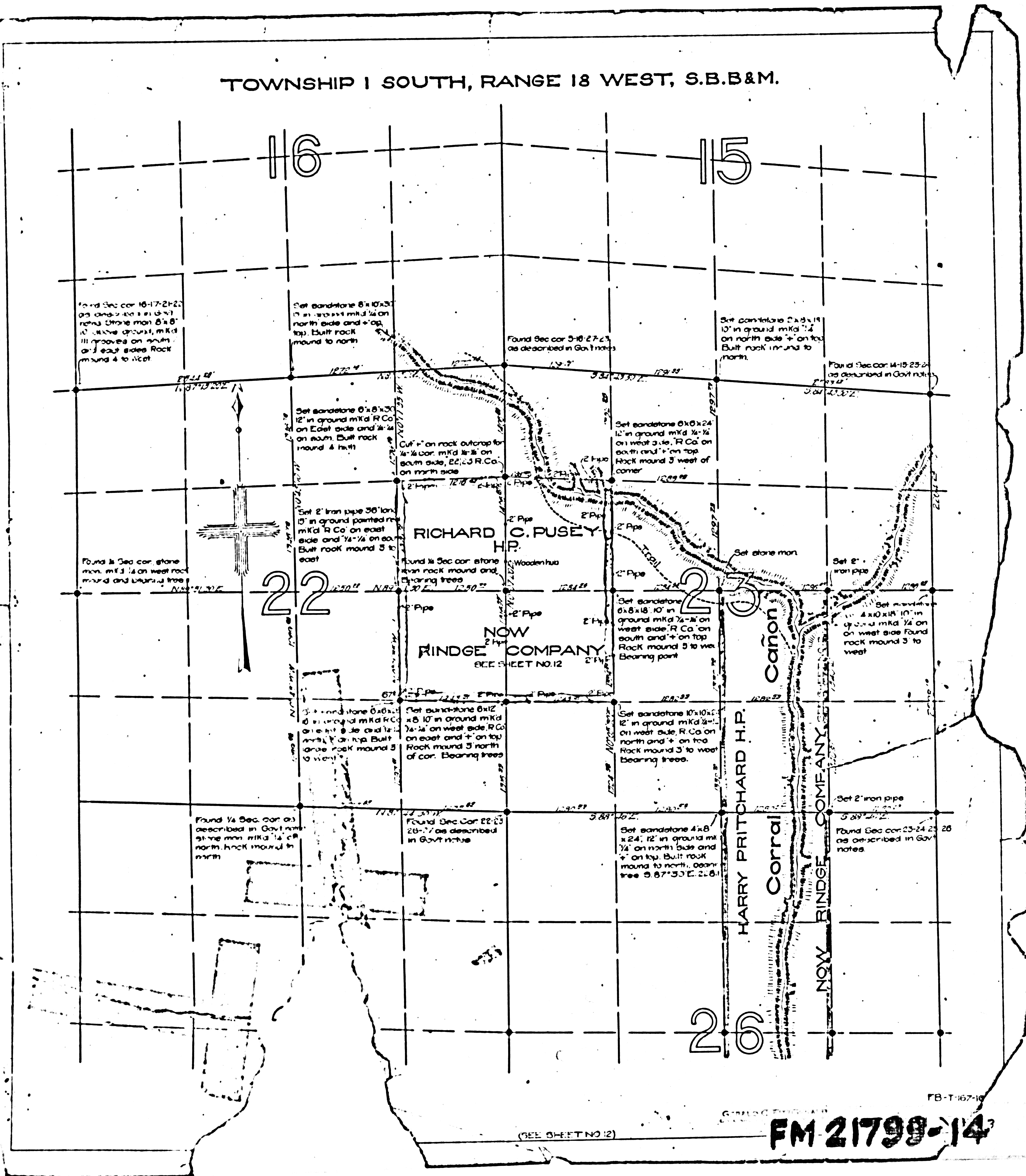
RANCHO TOPANGO MALIBU SEQUIT

(SEE SHEET NO. 4)

FBT-167-133

FM 21799-13 12

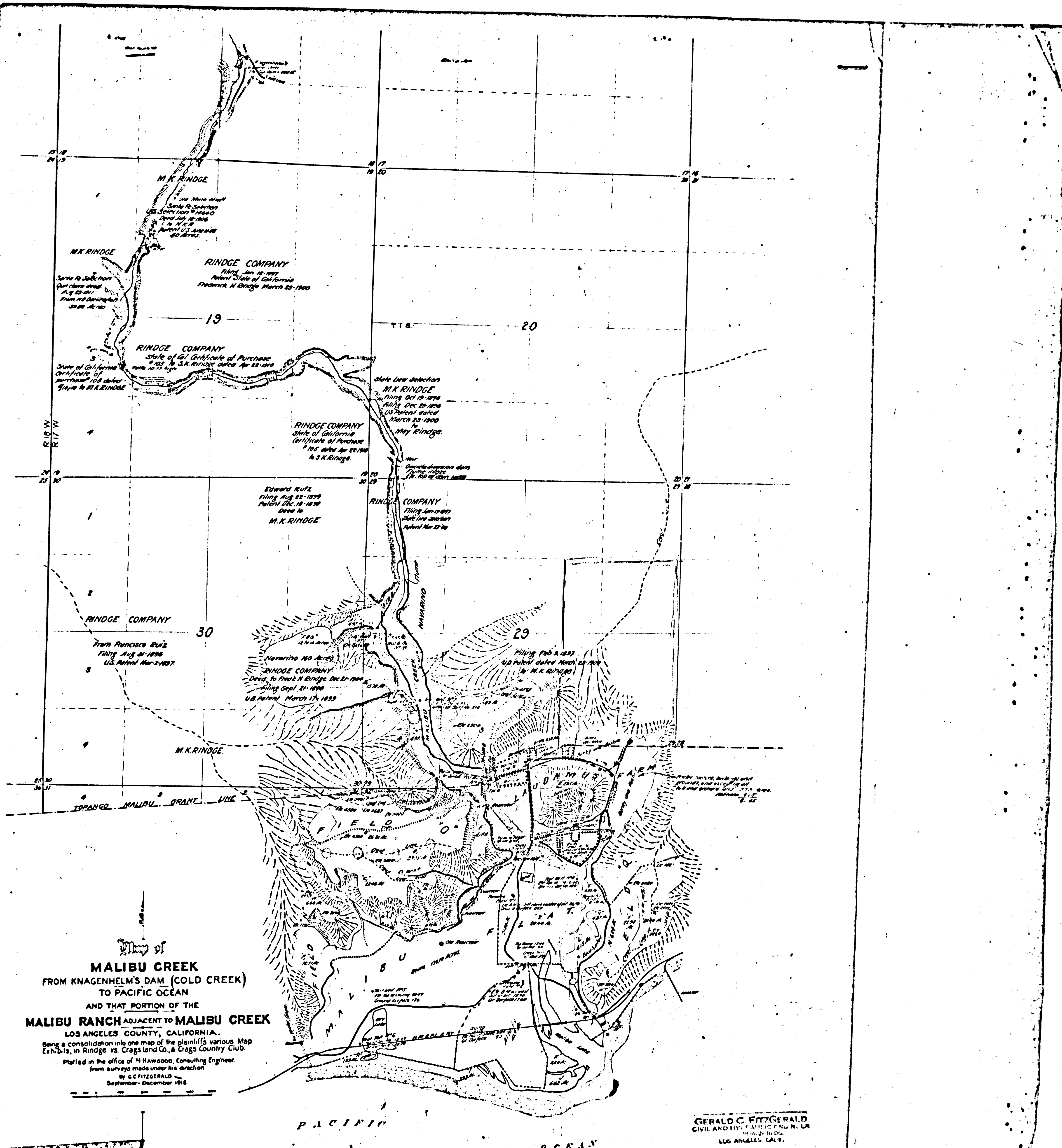
TOWNSHIP 1 SOUTH, RANGE 18 WEST, S.B.B&M.



(SEE SHEET NO 12)

FM 21799-14

FB-T-167-10



Map of
MALIBU CREEK
 FROM KNAGENHELMS DAM (COLD CREEK)
 TO PACIFIC OCEAN
 AND THAT PORTION OF THE
MALIBU RANCH ADJACENT TO MALIBU CREEK
 LOS ANGELES COUNTY, CALIFORNIA.
 Being a consolidation into one map of the plaintiff's various Map
 Exhibits in Rindge vs. Craggs and Co. & Craggs County Club.
 Plotted in the office of H. Hawood, Consulting Engineer,
 from surveys made under his direction
 by G. C. FITZGERALD
 September - December 1918

GERALD C. FITZGERALD
 CIVIL AND SURVEYING ENGINEER
 1512 1/2 B. B. BLDG.
 LOS ANGELES, CALIF.

FF 23

FM 21799-15



UNITED STATES
DEPARTMENT OF THE INTERIOR
BUREAU OF LAND MANAGEMENT
California State Office
Division of Engineering
1014 Fourth St.
Sacramento 14, California

1.05

July 11, 1961

Mr. M C Quiros, Land Surveyor
22762 Pacific Coast Hwy
Malibu, California

Dear Mr. Quiros

I wish to refer to your letter of June 28 relative to methods of subdivision of section 28, T 1 S R 17 W, San Bernardino Meridian.

The following procedure represents the method this bureau would be required by law to follow in the subdivision of this section.

1. The true S. bdy. of sec. 21 is determined by a straight line or lines between corners on the N. bdy. of the Rancho Topanga Malibu Segmt.
2. The true point for the closing corner of secs. 27 and 28 is at the intersection (or extension) of the line connecting the 1/4 sec. cor. of secs. 27 and 28, and the original closing cor. of secs. 27 and 28, with the N. bdy. of the Rancho. The true point for the C C of secs. 28 and 29 is similarly determined.
3. The S. 1/16 sec. cor. of secs. 27 and 28 is located at proportionate distance between the 1/4 sec. cor. of secs. 27 and 28 and the original C C of those sections, and using 20.00 chs. and 9.54 chs. as a basis for the proportion the S. 1/16 sec. cor. of secs. 28 and 29 is similarly located.
4. The S. 1/2 sec. cor. of the sec. will be at midpoint in bearing between the closing corners, as established on the true Rancho boundary.
5. The C S 1/16 sec. cor. would be at proportionate position between the Center 1/4 sec. cor. and the S. 1/2 sec. cor., using 20.00 and 9.54 chs. as a basis for proportion.

*This copy furnished to County Engineer
on 11/16/77 by Mr. Quiros
R.J.m.*

FM 21799-16

6. The Center 1/2 sec. cor. will be at the intersection of the N-S and E-W centerlines.
 7. The SE 1/16 sec. cor. and SW 1/16 sec. cor. will be at intersections of centerlines of SE 1/4 and SW 1/4 of the section.
 8. Lines M-J and J-L are not necessarily on the same bearing.
- I am returning your diagram.

Sincerely yours

George W Johnson
George W Johnson
Office Cadastral Engineer

• LOT SURVEY
SUBDIVISION

• CENTER LINE
GRADING PLAN

MARIO C. QUIROS • Land Surveyor

22762 PACIFIC COAST HWY.
MALIBU, CALIFORNIA
CLASS 6-8022

