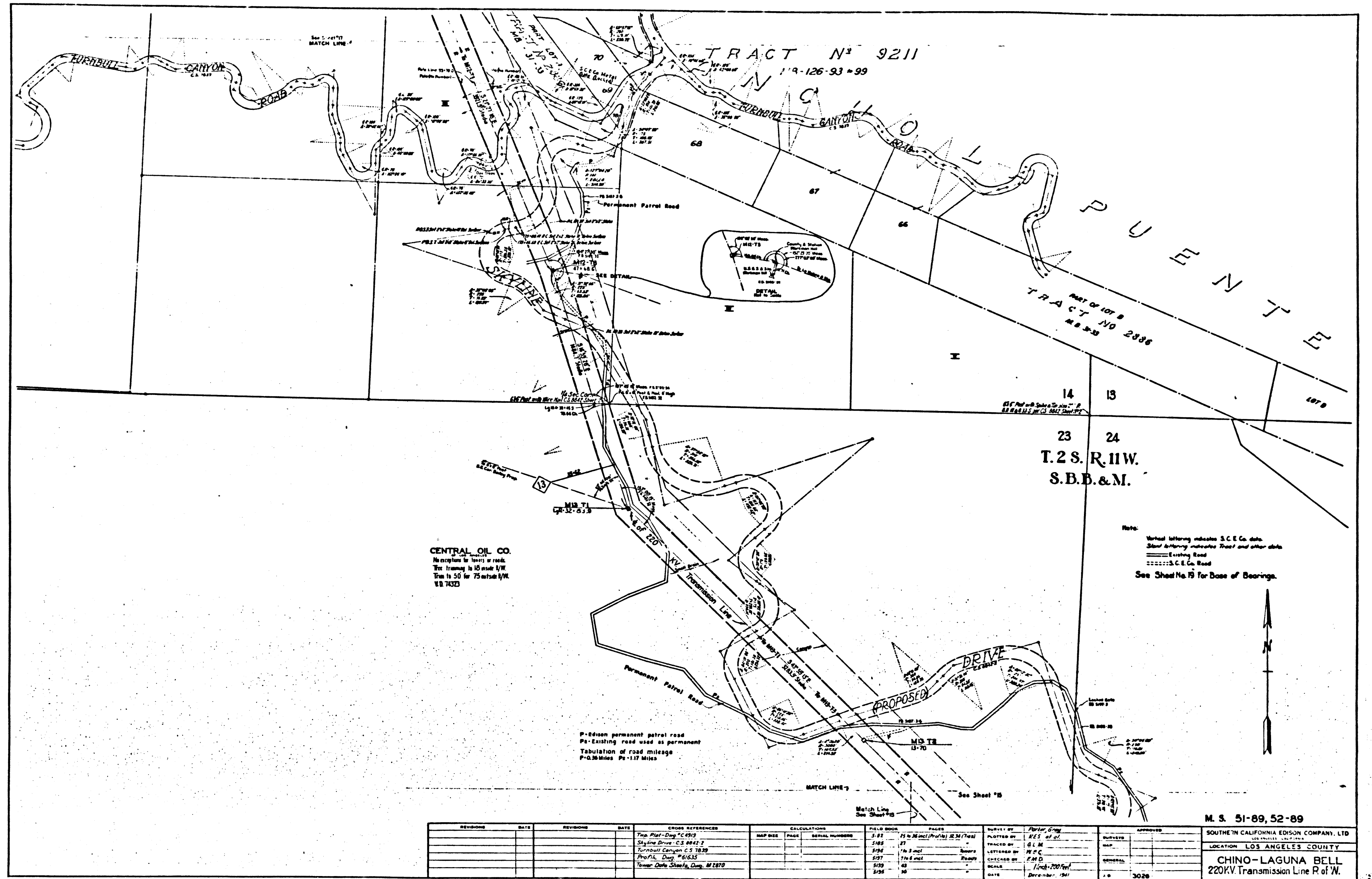


522877



CENTRAL OIL CO.
 Neighboring to lands or roads.
 True to 50 for 75 outside 1/4 W.
 1/4 7430

Note:
 Vertical lettering indicates S.C.E. Co. data.
 Slant lettering indicates Trust and other data.
 Existing Road
 S.C.E. Co. Road
 See Sheet No. 19 for Base of Bearings.

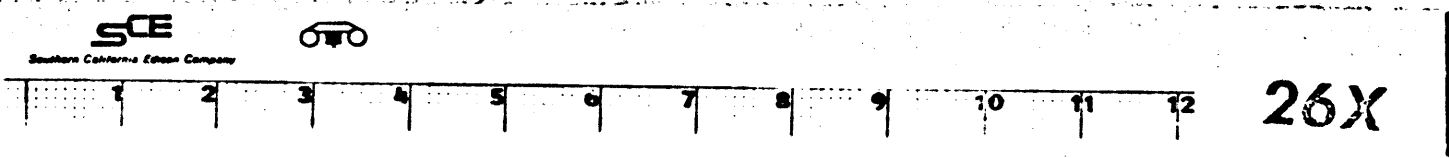
P-Edison permanent patrol road
 P₁-Existing road used as permanent
 Tabulation of road mileage
 P-0.36 Miles P₁-1.17 Miles

REVISIONS	DATE	REVISIONS	DATE	CROSS REFERENCES	CALCULATIONS	FIELD BOOK	PAGES	PLOTTED BY	APPROVED
				Top. Plat - Dwg. "C" 4912		3-82	25 to 30 incl (Profile) 22 3/4 (Total)	PLANNED BY RES. 10/21	
				Skylite Drive - C.S. 8842-2		1-88	27	TRACED BY G.L.M.	
				Terrace Canyon - C.S. 1839		5-94	19 to 21 incl	LETTERED BY M.F.C.	
				Profile Dwg. #01633		1-57	1 to 4 incl	CHECKED BY F.M.D.	
				Tanner Oaks Sheds, Dwg. M 2870		1-53	43	SCALE 1 inch = 200 feet	
						2-58	36	DATE December, 1961	

M. S. 51-89, 52-89

SOUTHERN CALIFORNIA EDISON COMPANY, LTD.
 LOS ANGELES COUNTY
 CHINO-LAGUNA BELL
 220KV. Transmission Line R of W.

Sheet 16 of 26 Sheets 522877



FM 21811-2

FM 21811-2