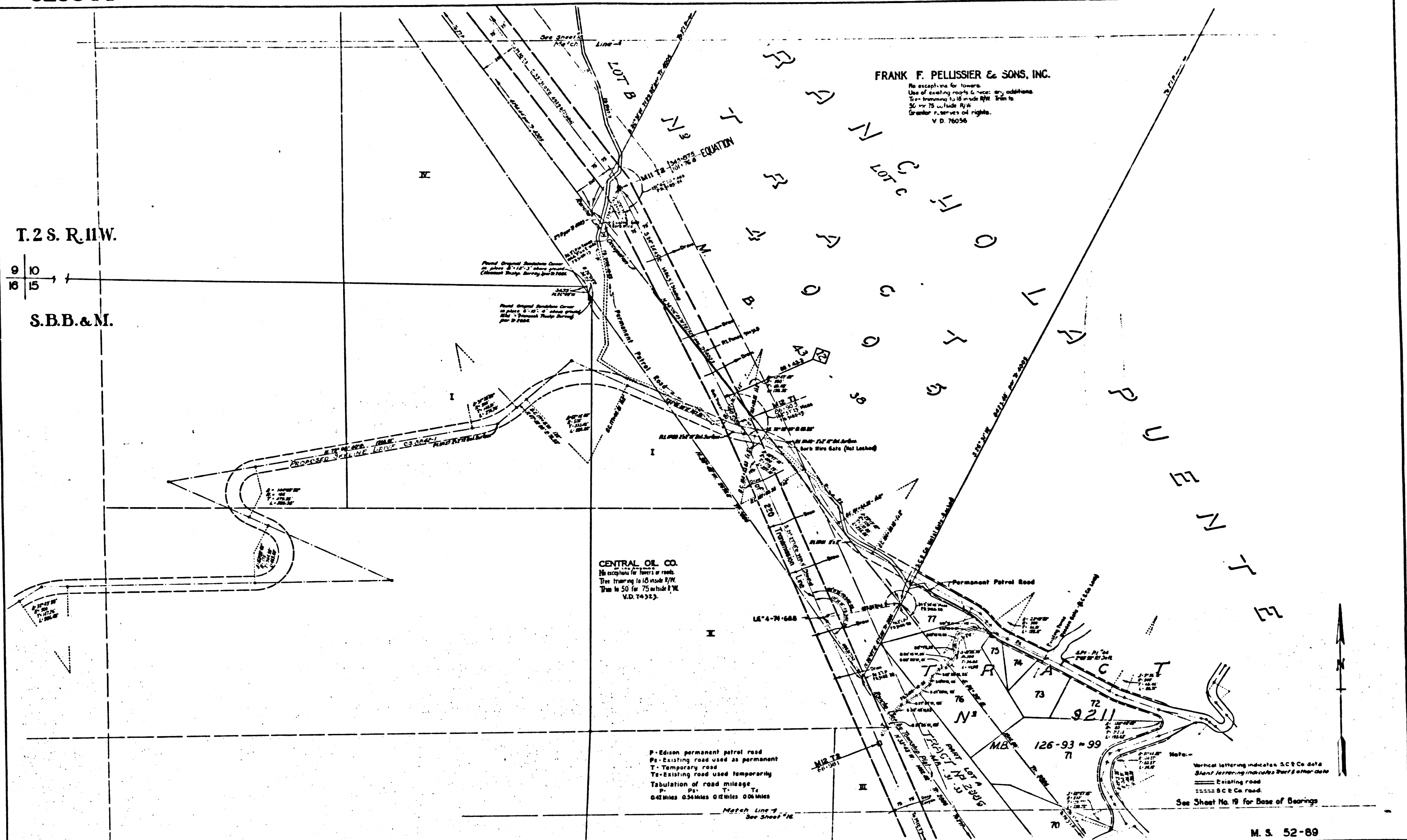


522878



T.2 S. R.11 W.
 10
 15
 S.B.B.&M.

CENTRAL OIL CO.
 No exceptions for towers or roads.
 Tree trimming to 10' inside R/W.
 50' to 75' outside R/W.
 V.D. 74923.

FRANK F. PELLISSIER & SONS, INC.
 No exceptions for towers.
 Use of existing roads to erect any additions.
 Tree trimming to 10' inside R/W. 50' to
 75' outside R/W.
 Greater easement of rights.
 V.D. 76056

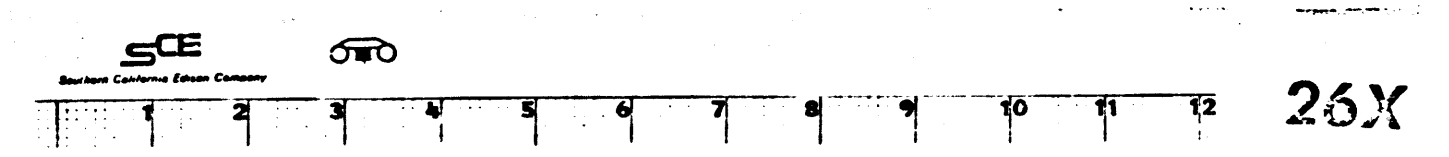
P - Edison permanent patrol road
 P+ Existing road used as permanent
 T - Temporary road
 T+ Existing road used temporarily
 Tabulation of road mileage
 P+ T+ T+ T+ T+
 0.42 Miles 0.54 Miles 0.12 Miles 0.06 Miles

Note: Vertical lettering indicates S.C.E. Co. data
 Slant lettering indicates other data
 Existing road
 S.C.E. Co. road
 See Sheet No. 19 for Base of Bearings

REVISIONS	DATE	REVISIONS	DATE	CROSS REFERENCES	CALCULATIONS	FIELD BOOK	PLANS	APPROVED
				Skylark Drive C.S. 0442-1	MAP SIZE PAGE SERIAL NUMBERS	3105 36 (Profile)	3108 12 (15' x 22' incl. Profile)	APPROVED BY: RES et al.
				Profile Data #41635	3125 123	3109 11 (24' x 22')	3110 46 (49' incl. Towers)	TRACED BY: B.C.M.
				Temp. Plat. Data #C 4919		3111 19 (22' incl. Towers)		LAYED BY: W.C.C.
				Data Sheets # 2970		3112 19 (22' incl. Towers)		CHECKED BY: M.D.U.
						3113 19 (22' incl. Towers)		SCALE: 1 inch = 200 feet
								DATE: 12-23-02

M.S. 52-89
 SOUTHERN CALIFORNIA Edison COMPANY, LTD.
 LOCATION LOS ANGELES COUNTY
 CHINO-LAGUNA BELL
 220KV Transmission Line R of W.

Sheet 17 of 26 Sheets 522378



FM 21811-3

FM 21811-3