

2-254-256

2-254-256

#03651

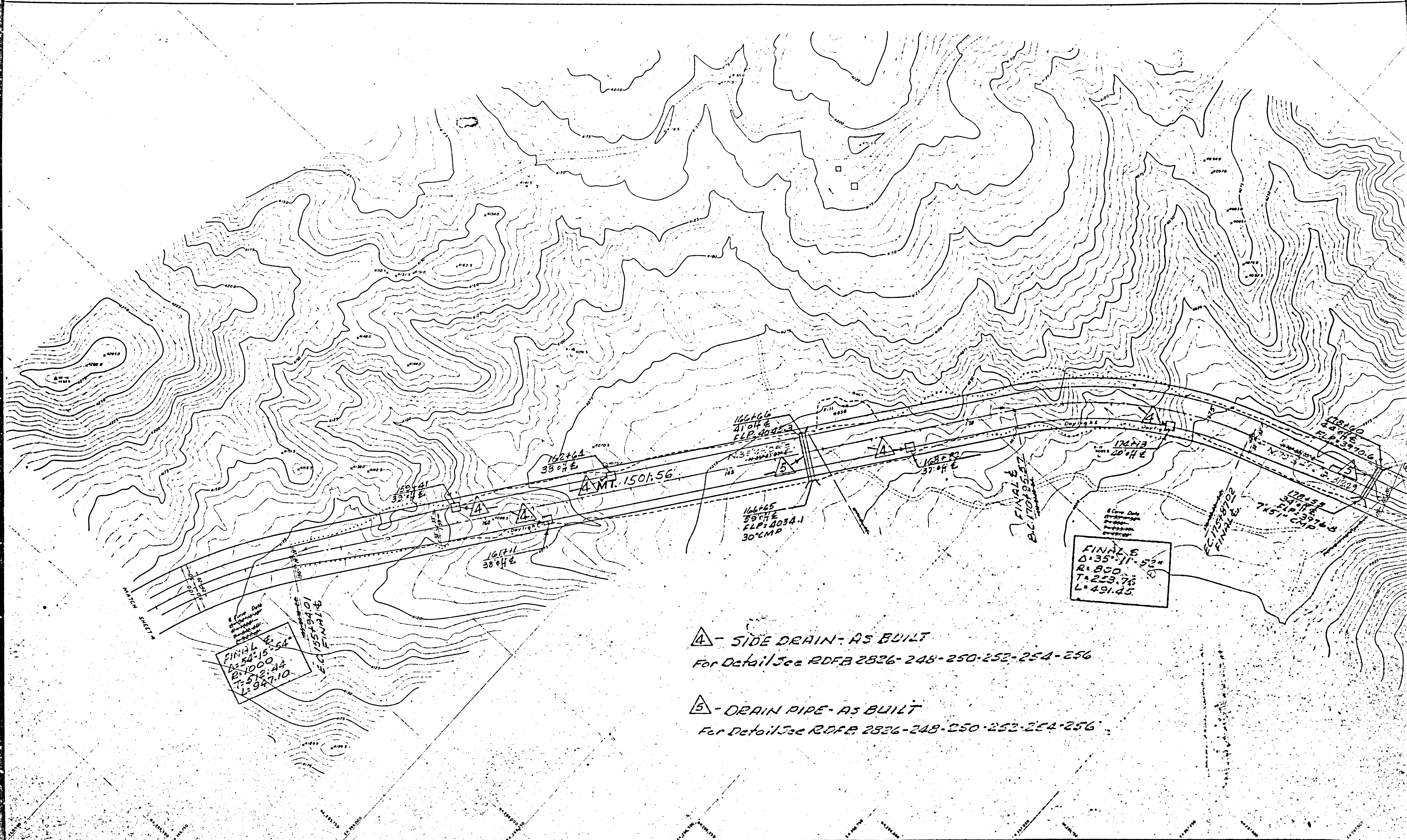
PROJECT
AS SHOWN

Note: all'n. per: R.D.F. 2705, 2806, 2934, 2937

CONSTRUCTION PLAN
 MOUNT EMMA RD. PHASE I
 Angeles Forest Hwy. to Chasseboro Rd.
 Proj. No. 016 I
 Sht. 6 of 19

LOS ANGELES COUNTY
 TOPOGRAPHIC MAP
 MT EMMA RD
 FROM
 3 MILES NORTHEAST OF ANGELES
 HIGHWAY
 TO
 0.5 MILE EAST OF LITTLE R.
 PREPARED BY: Morison Survey
 1964 L. Morison, Pasadena, CA
 DATE

FM 21837-5 (A1 OF A2)



CURVE DATA
 FINALE
 Δ=54°15'
 R=1000
 T=512.44
 L=947.10
 EC 155+94.01
 FINALE

CURVE DATA
 FINALE
 Δ=35°11'52"
 R=800
 T=253.75
 L=491.45

▲ - SIDE DRAIN - AS BUILT
 For Detail See RDPB 2826-248-250-252-254-256

◻ - DRAIN PIPE - AS BUILT
 For Detail See RDPB 2826-248-250-252-254-256

FM 21837-5 (A2 OF A2)