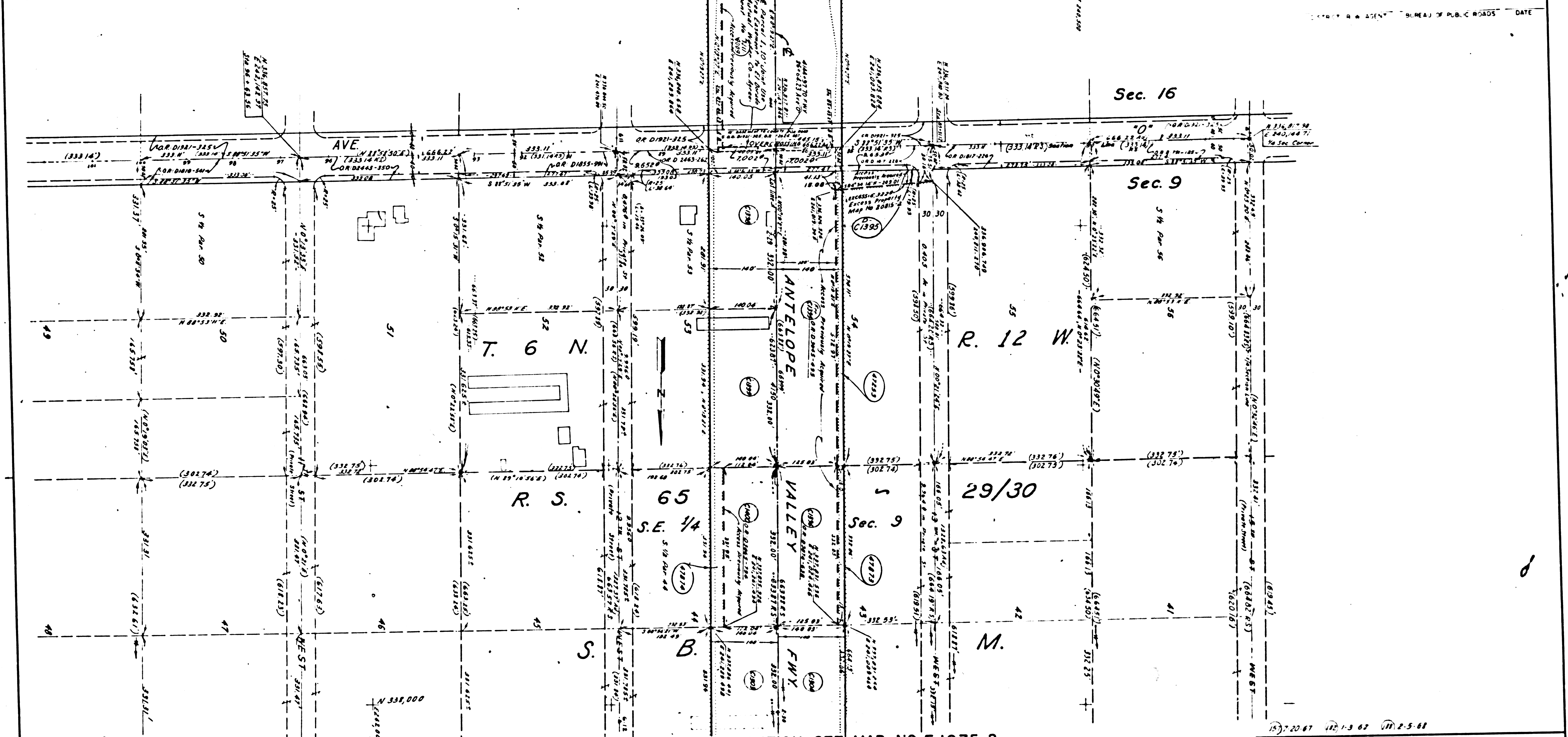


FOR CONTINUATION SEE MAP NO. F-1074-3

STATE PROJECT NO. DATE SHEETS
 CALIF. BUREAU OF PUBLIC ROADS DATE



FOR CONTINUATION SEE MAP NO. F-1075-2

PARCEL NO.	GRANTOR OR GRANTEE	AREA*			INST.	RECORDING DATA	
		TO BE ACQUIRED	EXCESS	TOTAL		DATE	O. R.
C1393	Charles P. Hatcher, et al	1.921 Ac	6.322*	4.401 Ac	Fee	1-18-61	D 2045-493
C1394	Joy E. Still, et al	0.953 Ac		2.535 Ac	Fee	1-3-62	D 21874-630
C1395	William L. Webb, et al	0.906 Ac		2.154 Ac	Fee	3-3-69	D 4294-807
D-C1395	State to C. P. Hatcher, et al	D.D.		5.13-60	D.D.	10-26-60	D 4367-803
C1399	Henri M. Danne	1.067 Ac		2.815 Ac	Fee	2-20-69	D 4284-659
C1400	Conin A. Wilson, et al	0.854 Ac		2.534 Ac	Fee	12-22-61	D 3865-794
1004009	For information see Map F-1075-3						
47873	Joy E. Still, et al	0.114 Ac		1.582 Ac	Fee	11-24-68	D 4206-23
47874	Edwin A. Wilson, et al	0.213 Ac		1.680 Ac	Fee	10-29-68	D 4177-712
47253	Charles P. Hatcher, et al	0.197 Ac		2.771 Ac	Fee	1-28-69	D 4292-396

PARCEL NO.	GRANTOR OR GRANTEE	AREA*			INST.	RECORDING DATA	
		TO BE ACQUIRED	EXCESS	TOTAL		DATE	O. R.

PARCEL NO.	GRANTOR OR GRANTEE	AREA*			INST.	RECORDING DATA	
		TO BE ACQUIRED	EXCESS	TOTAL		DATE	O. R.

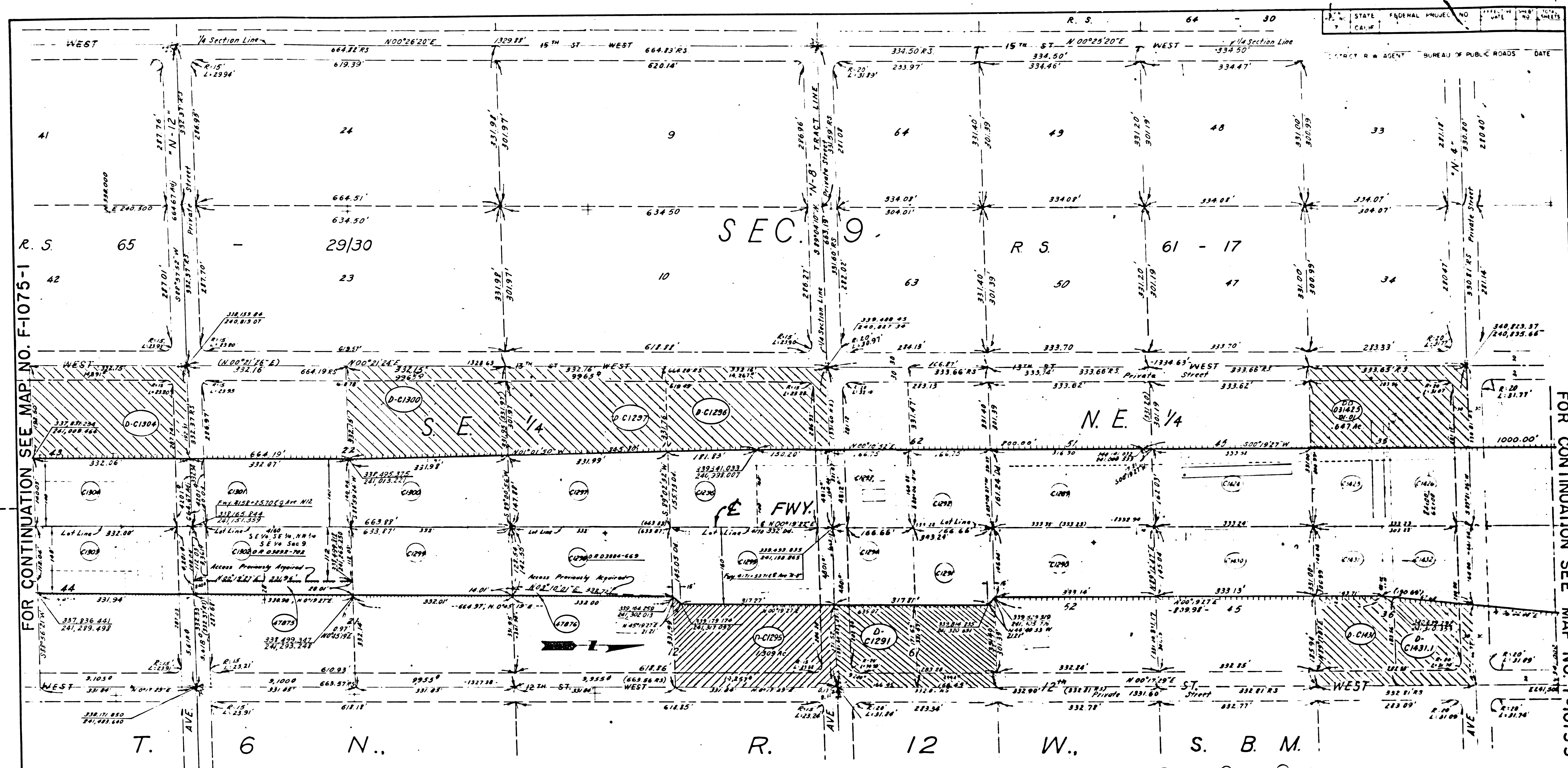
REVISION DATES			
REV. BY	DATE	REV. BY	DATE
C.D.S.	1-31-62		

STATE OF CALIFORNIA
 TRANSPORTATION DEPARTMENT

R/W MAP
 NO. F-1075-1
 07-LA-14-62.7
 100 0 100 FEET
 RWPE TOMITA SR BERG

LEGEND:
 * AREA IN SQUARE FEET UNLESS OTHERWISE NOTED
 () PREVIOUS RECORD DATA

FM 21870-1 IM 64-N-DI 324-237



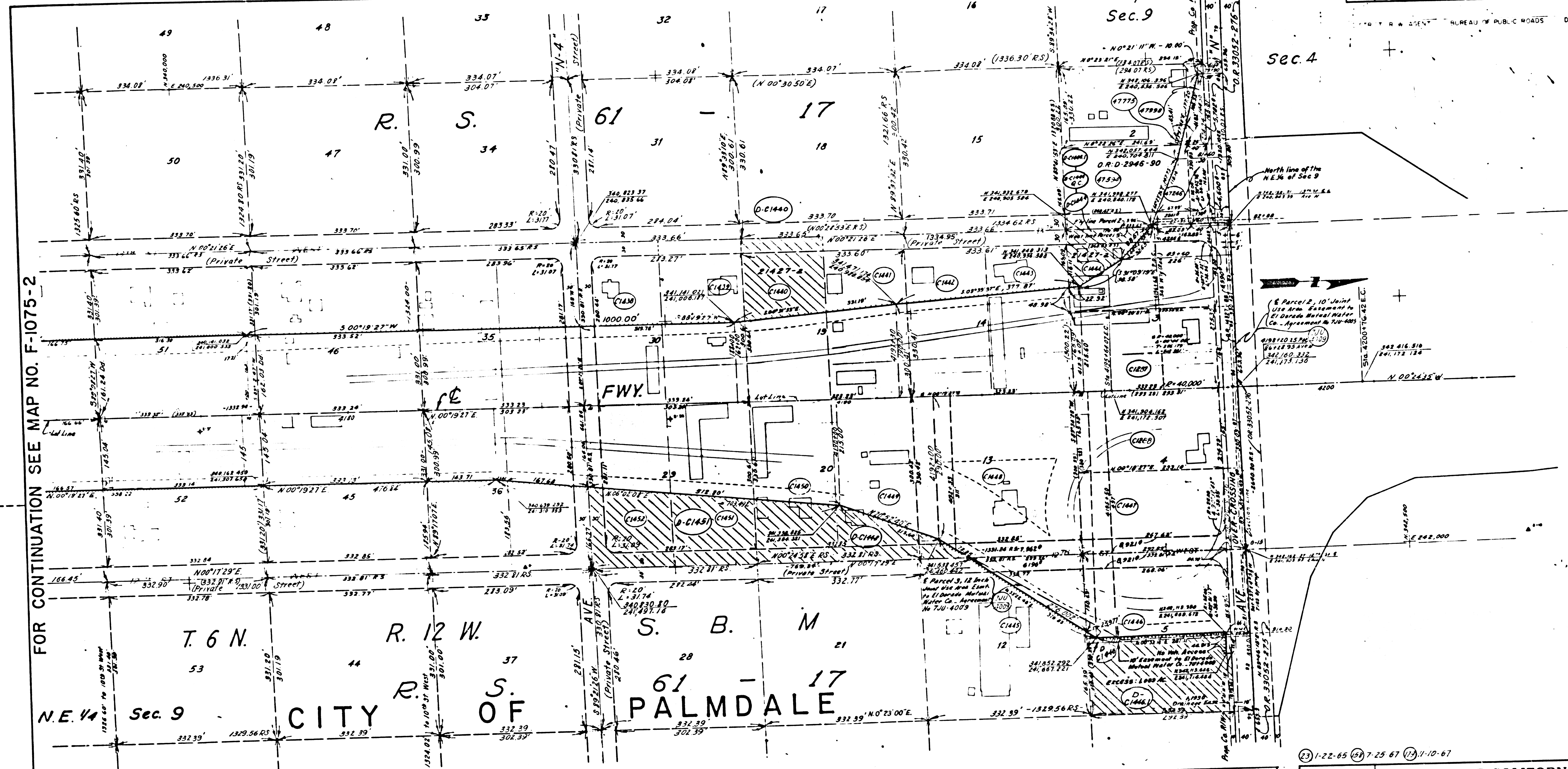
PARCEL NO.	GRANTOR OR GRANTEE	TO BE ACQUIRED	AREA*	EXCESS	TOTAL	INST.	RECORDING DATA	DATE	O. R.
C1289	Ronald F Hunt et ux	1,237 Ac	2,536 Ac			Fee	3-18-60	03942-266	
C1290	Albert E Holsey, et ux	1,109 Ac	2,533 Ac			Fee	12-18-60	02731-80	
C1291	Elvie M Garland	2,674 Ac	0,657 Ac	1,267 Ac		Fee	1-4-60	03975-885	
C1292	A J Mackowiak, et ux	2,616 Ac	1,269 Ac			Fee	1-4-60	03975-888	
C1293	Ann H Loyer McKay	2,615 Ac	1,269 Ac			Fee	11-21-60	04201-644	
C1294	Fred Henwood, et ux	2,674 Ac	0,655 Ac	1,267 Ac		Fee	2-19-60	03916-329	
C1295	Susuma Toda, et ux	2,527 Ac	1,309 Ac			Fee	3-9-60	03934-210	
C1296	Ronald P Peterson, et ux	2,528 Ac	1,317 Ac			Fee	3-29-60	03954-474	
C1297	Ivan Smith, et ux	2,529 Ac	1,372 Ac			Fee	2-1-60	03901-763	
C1298	M H Mendenhall	1,042 Ac		2,528 Ac		Fee	1-15-60	03884-669	
C1299	Dow H Jackson, et ux	1,077 Ac		2,530 Ac		Fee	2-4-60	04223-327	
C1300	Dennis M Wisdom, et ux	2,531 Ac	1,434 Ac			Fee	2-19-60	03916-326	
C1301	Victor Filippini, et ux	1,067 Ac		2,532 Ac		Fee	2-14-60	04273-966	
C1302	Karl E Chisholm, et ux	0,854 Ac		2,531 Ac		Fee	1-23-60	03892-702	
C1424	B K Hawkins, et al	1,240 Ac		2,534 Ac		Fee	2-20-60	03917-520	
C1425	B B Maluszewicz, et ux	1,267 Ac	647 Ac	1,267 Ac		Fee	7-10-60	04060-230	
C1426	William E Carson	1,266 Ac	646 Ac	1,266 Ac		Fee	2-13-60	03910-502	
C1430	Walter J Hess, et ux	1,109 Ac		2,532 Ac		Fee	7-26-60	02989-922	
C1431	D A Miller, et ux	1,265 Ac	710 Ac	1,265 Ac		Fee	2-13-60	03916-332	
C1432	Donald Alwood, et ux	1,265 Ac	669 Ac	1,265 Ac		Fee	12-27-67	03867-947	
47875	Karl E Chisholm, et ux	9,295 Ac		1,677 Ac		Fee	12-8-60	04217-151	
47876	M H Mendenhall	2,324 Ac		1,486 Ac		Fee	10-29-60	04177-764	
D-C1297	State to E W Atkins et ux					DD	2-11-71	04968-576	
D-C1304	State to E W Atkins et ux					DD	2-11-71	04968-576	
D-C1431	State to A Garbrish et ux					DD	3-29-71	05005-632	
D-C1296	State to E W Atkins et ux					DD	3-3-71	04925-1175	
D-C1300	State to E W Atkins et ux					DD	3-10-71	04922-1165	
D-C1431	A Garbrish to State					QC	11-4-71	05247-140	

REV. BY	DATE	REV BY	DATE
E O S	1-24-60		
E P	4-15-70		

STATE OF CALIFORNIA
 R/W MAP
 NO. F-1075-2
 07-LA-14-63.2
 100 0 100
 RWPE TOMITA SR BERG
 LEGEND:
 ACCESS DENIED EXCLUDES STREET AREA
 AREA IN SQUARE FEET UNLESS OTHERWISE NOTED
 PREVIOUS RECORD DATA

F-1075 (2) 1-22-63 (2) 1-3-60 (2) 4-3-70
 FM21870-2 I.M. 64-N-D-1
 324-237

FOR CONTINUATION SEE MAP NO. F-1075-3



FOR CONTINUATION SEE MAP NO. F-1075-2

FOR CONTINUATION SEE MAP NO. F-1076-1

* Excess Includes Area of Easement

PARCEL NO.	GRANTOR OR GRANTEE	TO BE ACQUIRED	AREA*	EXCESS	TOTAL	INST.	RECORDING DATE	O.R.
C1287	John Kluzik, et ux	1.112 Ac	1.112 Ac			Fee	10-21-69	D4532-516
C1288	Albert D. Huggins, et ux	1.111 Ac	1.111 Ac			Fee	3-4-68	D3929-129
C1438	Horace B. Anderson	.620 Ac	1.266 Ac			Fee	4-18-69	D4342-698
C1439	A.E. Howell	.621 Ac	1.266 Ac			Fee	2-2-68	D3903-57
C1440	H.G. Kiser, et ux	1.265 Ac	1.265 Ac	.012 Ac	1.265 Ac	Fee	1-30-68	D3959-138
C1441	H.V. Lasley, et ux	.707 Ac	1.265 Ac			Fee	12-17-69	D4226-219
C1442	Paul La Verne Hobbs, et ux	.754 Ac	1.264 Ac			Fee	4-7-69	D4330-140
C1443	A. Severson, et ux	.798 Ac	1.264 Ac			Fee	6-23-69	D4411-849
C1444	M.T. Hunt, et ux	1.112 Ac	1.112 Ac			Fee	11-26-68	D4206-28
C1445	U.S.A.	.397 Ac	2.522 Ac			Fee	2-17-69	D4280-494
C1446	George W. Lang, et ux	2.218 Ac	2.218 Ac			Fee	11-22-68	D4203-43
C1447	E.L. Oviatt, et ux	1.110 Ac	1.110 Ac			Fee	12-7-67	D3851-464
C1448	C.H. Lorey, et ux	2.525 Ac	0.75 Ac	2.525 Ac		Fee	1-15-68	D3884-662

PARCEL NO.	GRANTOR OR GRANTEE	TO BE ACQUIRED	AREA*	EXCESS	TOTAL	INST.	RECORDING DATE	O.R.
C1452	Harold C. Stover	1.264 Ac	1.264 Ac	.605 Ac	1.264 Ac	Fee	2-2-68	D3903-68
C1453	John Van Patten, et ux	0.152 Ac	0.152 Ac			Comd	9-2-69	D4485-208
C1454	Wm. S. Medinsky, et ux	0.171 Ac	0.962 Ac			Fee	5-15-70	D4714-2
C1455	A.M. Schumann, et ux	2569	0.963 Ac			Fee	2-11-70	D4630-625
C1456	A.M. Schumann, et ux	0.097 Ac	0.152 Ac			Fee	2-11-70	D4630-625
C1457	Stella To Uno M. Woehr		2.676 Ac			Q.D.	1-15-70	D4608-309
C1458	Archie Homes, Inc.		.279 Ac			Q.C.	1-15-70	D4608-308
C1459	Archie Homes, Inc.					Q.C.	5-12-70	D4710-929
C1460	Stella To Uno M. Woehr					Q.D.	5-19-70	D4717-230
C1461	Stella To Uno M. Woehr					Q.D.	6-4-71	D5078-512
C1462	Stella To Uno M. Woehr					Q.D.	7-6-71	D5104-595
C1463	Stella To Uno M. Woehr					Q.D.	2-4-70	D4625-404
C1464	Stella To Uno M. Woehr					Q.D.	8-8-68	D4093-664

PARCEL NO.	GRANTOR OR GRANTEE	TO BE ACQUIRED	AREA*	EXCESS	TOTAL	INST.	RECORDING DATE	O.R.
C1450	L.S. Botsford, et ux	1.264 Ac	1.264 Ac	.477 Ac	1.264 Ac	Fee	2-19-68	D3916-345
C1451	H.G. Nale, et ux	1.264 Ac	1.264 Ac	.541 Ac	1.264 Ac	Fee	1-23-68	D3892-680
C1452	Stella To Uno M. Woehr					Q.D.	11-9-72	D5662-223
C1453	Stella To Uno M. Woehr					Q.D.	2-1-73	D5749-359

REVISION DATES			
REV. BY	DATE	REV. BY	DATE

STATE OF CALIFORNIA
 TRANSPORTATION DEPARTMENT

ISSUE DATE: 1-22-65 (2) 7-25-67 (1) 11-10-67

R/W MAP
 NO. F-1075-3
 07-LA-14-63.6
 FILE NO. 19535-C
 DATE 9-1-67

RWPE TOMITA SR. BERG

LEGEND:
 - ACCESS DENIED
 - EXCLUDES STREET AREA
 - AREA IN SQUARE FEET UNLESS OTHERWISE NOTED
 - PREVIOUS RECORD DATA

FM 21870-3 IM 64-N-D-1 324-237

27-02-9