

SHEET 1 OF 1  
BLOCK 6145 MODULE 10  
1.900 ACRES

# RECORD OF SURVEY NO. 88-1001

IN THE CITY OF CYPRESS, COUNTY OF ORANGE, CALIFORNIA  
AND THE COUNTY OF LOS ANGELES, CALIFORNIA

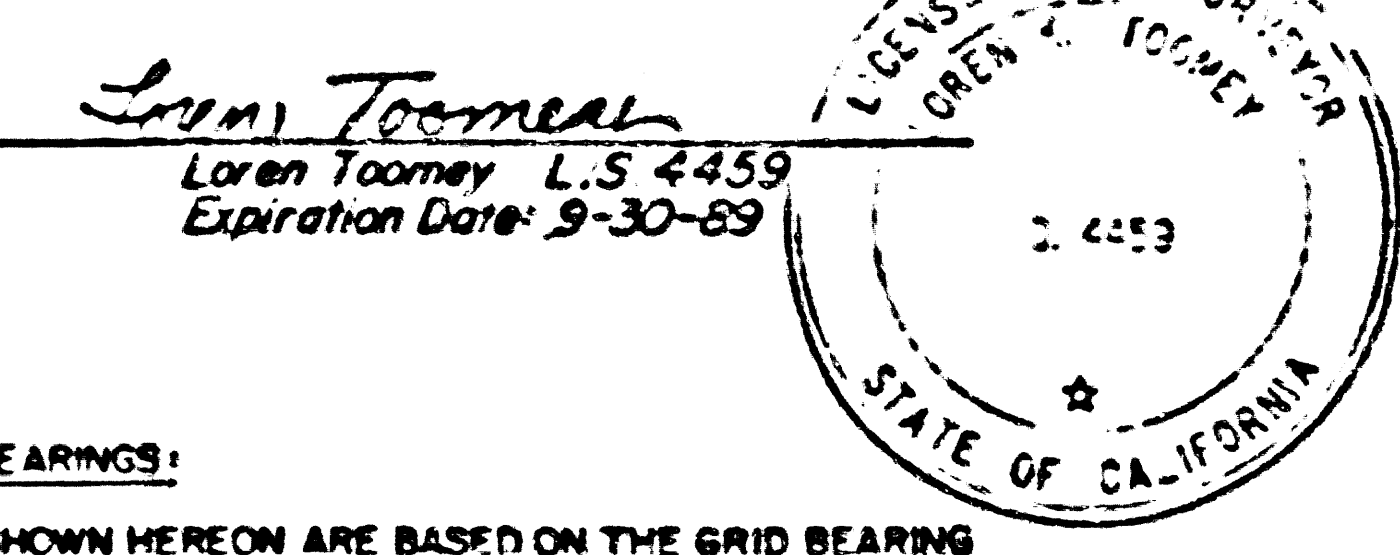
BEING A SURVEY OF A CERTAIN PORTION OF THE SOUTH HALF OF SECTION 8, T.4S., R.11W.,  
RANCHO LOS COYOTES AS SHOWN ON A MAP RECORDED IN BOOK 51, PAGE 11 OF MISCELLANEOUS MAPS  
RECORDS OF THE COUNTY OF ORANGE, CALIFORNIA.  
DATE OF SURVEY: DECEMBER, 1987  
LOREN TOOMEY L.S. 4459

EXEMPT RECORDING REQUESTED  
PER GOVERNMENT CODE 6103

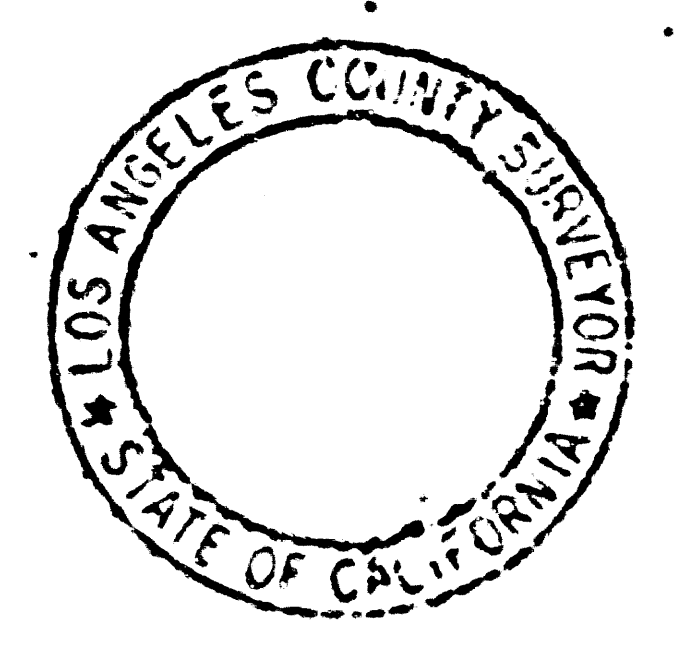
ACCEPTED AND FILED AT THE  
REQUEST OF  
Orange County Surveyor  
DATE: October 13, 1988  
TIME: 1:45 p.m. FEE: Exempt  
INSTRUMENT # 88-573409  
BOOK 120 PAGE 5

Statement of Purpose:  
The purpose of this survey is to document  
the County Line Boundary Adjustment,  
Forest Lawn Municipal Reorganization,  
No. 105 and City of Cypress Annexation.

This map correctly represents a survey made by me or under my  
direction in accordance with the requirements of the Land Surveyor's  
Act at the request of the Orange County Surveyor in November, 1987.



COUNTY SURVEYORS' STATEMENT  
THIS MAP HAS BEEN EXAMINED IN ACCORDANCE WITH  
SECTION 8766 OF THE LAND SURVEYORS' ACT  
THIS 6<sup>TH</sup> DAY OF OCT 19 88



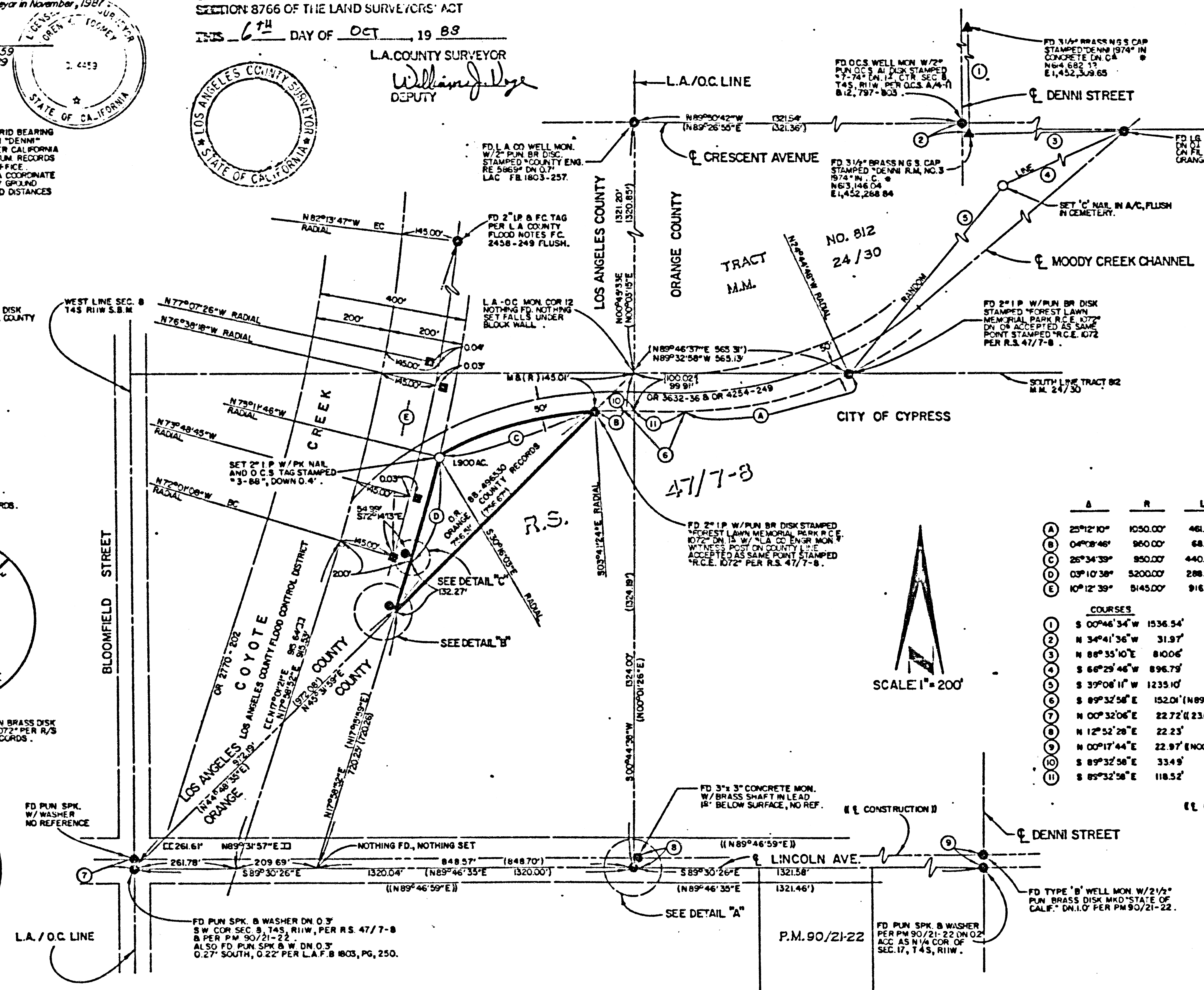
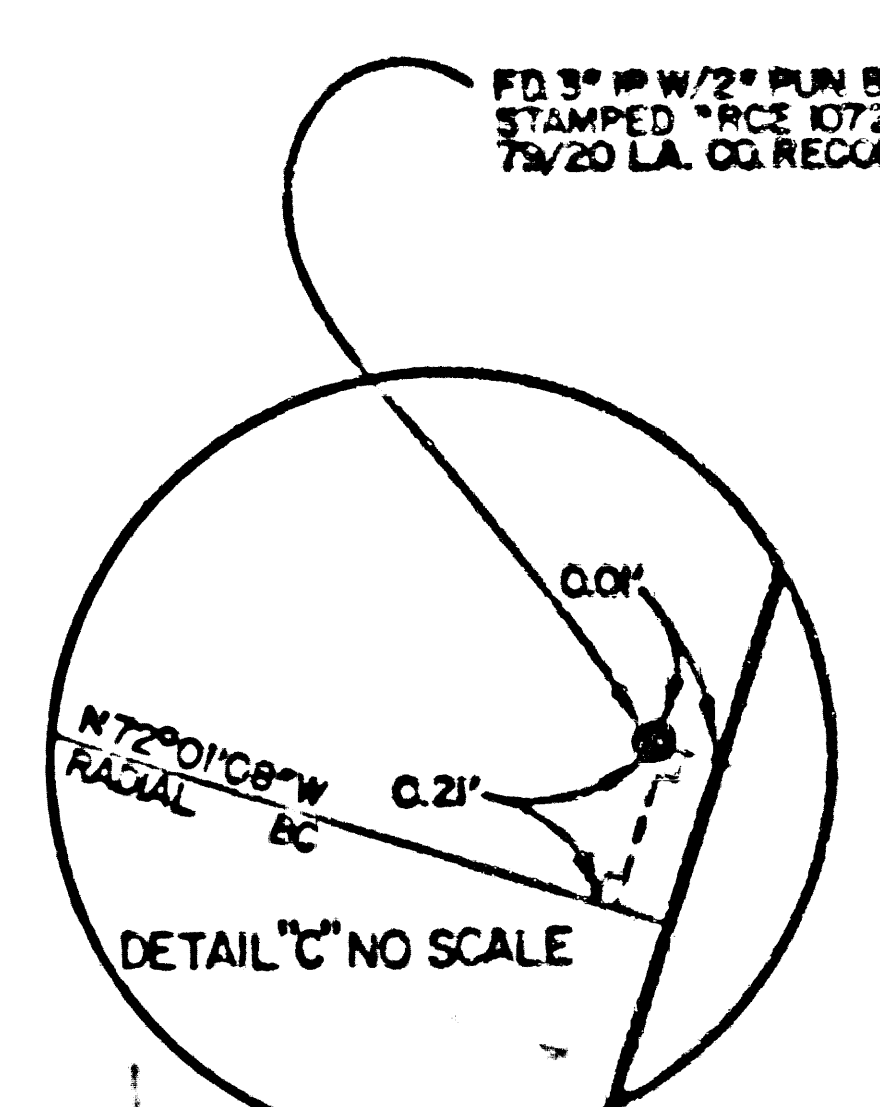
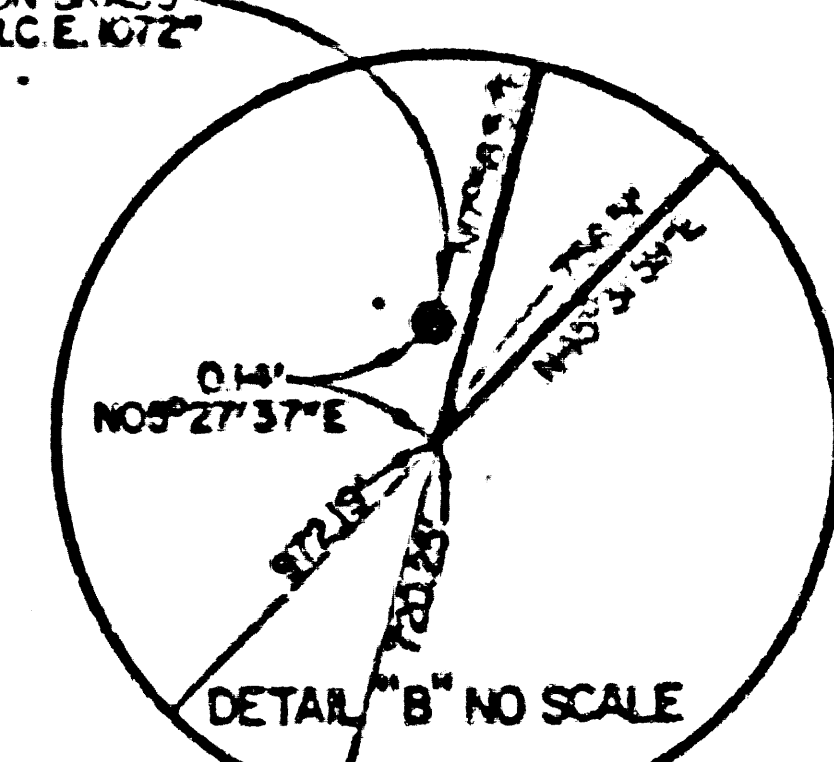
L.A. COUNTY SURVEYOR  
William J. Hoge  
DEPUTY

BASIS OF BEARINGS:  
\* BEARINGS SHOWN HEREON ARE BASED ON THE GRID BEARING  
BETWEEN N.G.S. HORIZONTAL CONTROL STATION "DENNI"  
AND "DENNI R.W. NO. 3" BEING 800°46'33" W PER CALIFORNIA  
COORDINATE SYSTEM ZONE II, O.C.S. 14-75 DATUM. RECORDS  
ON FILE IN THE ORANGE COUNTY SURVEYOR'S OFFICE.  
COORDINATES SHOWN ARE BASED ON CALIFORNIA COORDINATE  
SYSTEM, ZONE II, O.C.S. 14-75 DATUM. MULTIPLY GROUND  
DISTANCES SHOWN BY 0.999997 TO OBTAIN GRID DISTANCES  
USED WITH COORDINATES GIVEN.

MONUMENT NOTES:  
● FD. MONUMENT AS DESCRIBED.  
○ SET MONUMENT AS DESCRIBED.  
▲ FD. N.G.S. MONUMENT AS DESCRIBED.

FD. L.A. COUNTY FLOOD CONTROL 3 1/2" DIA. DISK  
STAMPED "96 R/W" W/PUN MARK PER L.A. COUNTY  
FLOOD NOTES FC 2458-247.

RECORD LEGEND  
|| = OR 4254 PG. 249-251 AND OR 3632 PG. 36  
( ) = PS 47/7-8  
C J = A245-00, PG. 72  
E J = PM 90/21-22  
CC J = OR 2770-202  
( ) = L.A. FLOOD CONTROL NOTES FC 2458-247  
( ) = R/S BOOK 79, PAGE 20 L.A. COUNTY RECORDS.

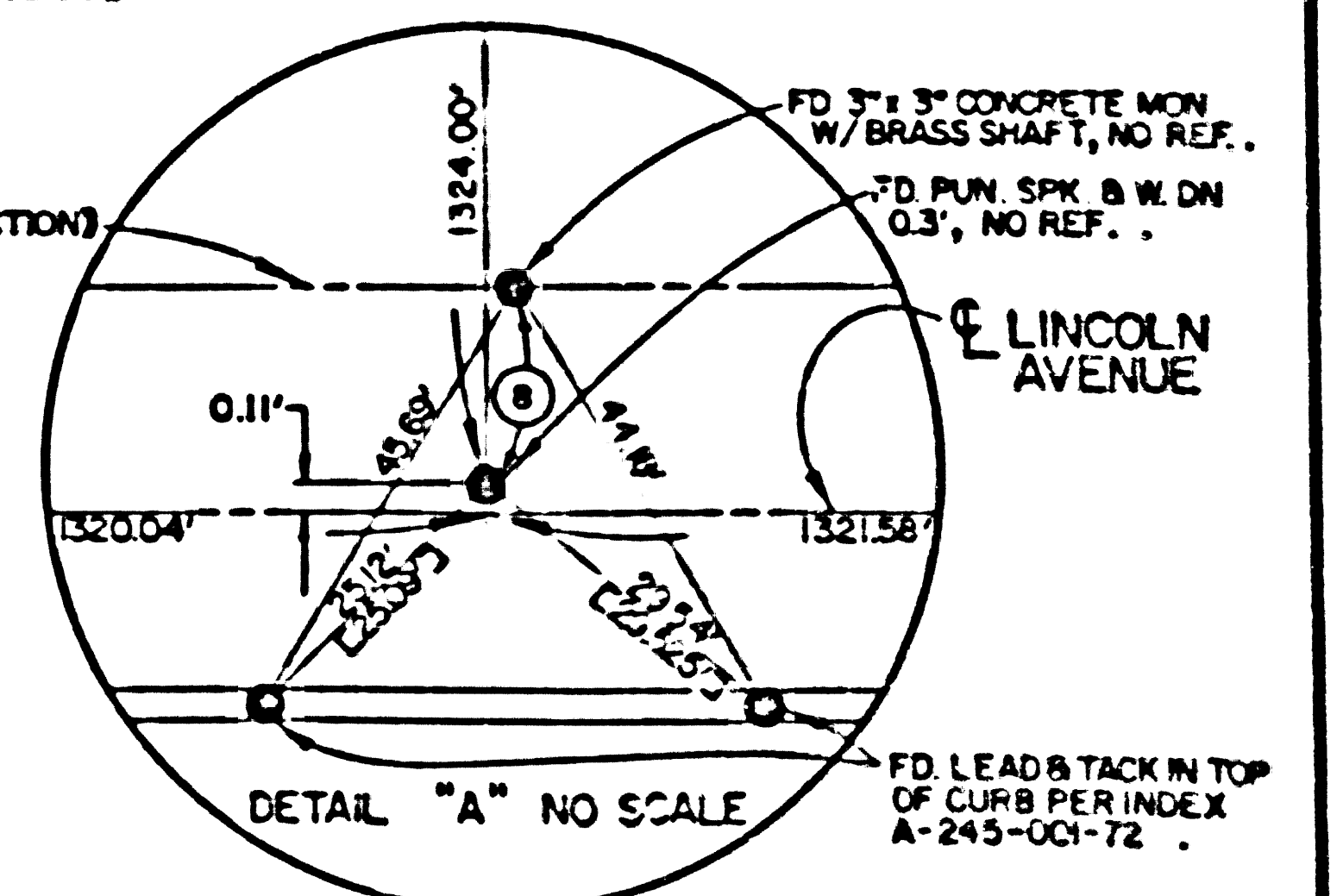
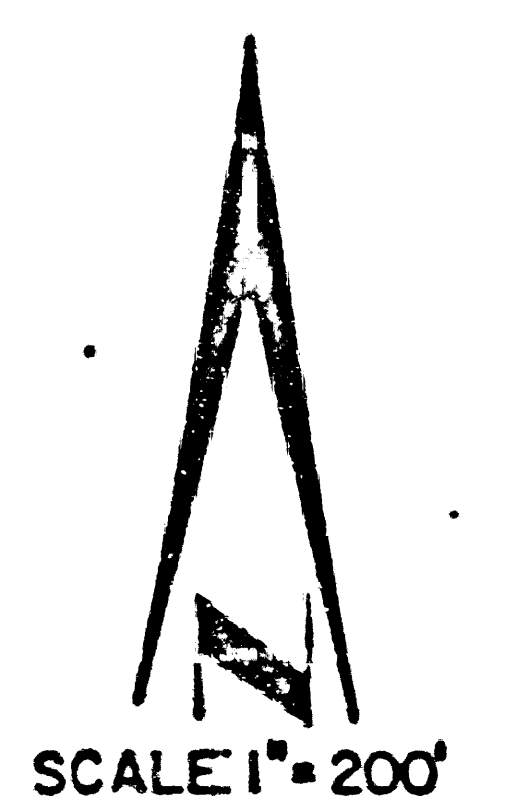


CURVE DATA

A	R	L	T	B	R	L	
(A)	25°12'10"	1050.00'	461.87'	224.73'	(22°12'31"	1050.00'	461.97'
(B)	04°09'46"	950.00'	68.74'	34.70'	(04°09'46"	950.00'	68.75'
(C)	26°34'39"	950.00'	440.67'	224.37'	(26°33'18"	950.00'	440.29'
(D)	03°10'38"	5200.00'	288.36'	144.21'	(03°11'10"	5200.00'	289.16'
(E)	10°12'39"	5145.00'	916.90'	456.67'	(10°12'51"	5145.00'	917.18'

COURSES

(1)	S 00°46'34"W	1536.54'
(2)	N 34°41'36"W	31.97'
(3)	N 88°35'10"E	81006'
(4)	S 68°29'46"W	896.79'
(5)	S 39°06'11"W	1235.10'
(6)	S 89°32'58"E	152.01' (N89°46'37"E)
(7)	N 00°32'06"E	22.72' (23.00')
(8)	N 12°52'28"E	22.23'
(9)	N 00°17'44"E	22.97' (N00°22'12"W 22.96')
(10)	S 89°32'58"E	334.9'
(11)	S 89°32'58"E	118.52'



F M 21886  
IM 31-D-2