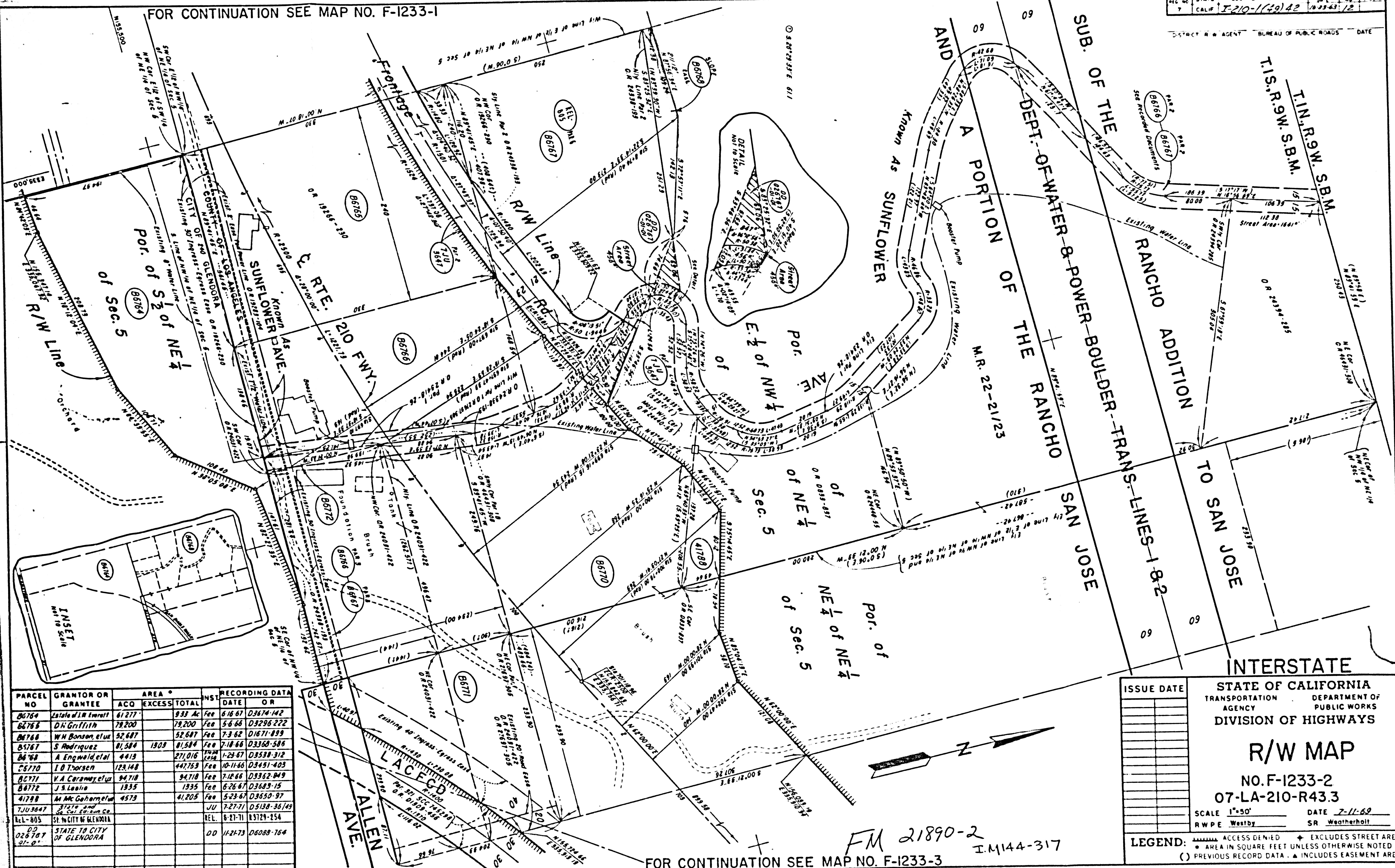


FOR CONTINUATION SEE MAP NO. F-1233-1



PARCEL NO.	GRANTOR OR GRANTEE	AREA *		NS*	RECORDING DATA	
		ACQ	EXCESS TOTAL		DATE	OR
86764	Estate of M. Enright	61.277	933	Ac	Fee	6-16-67 D3674-142
86765	D.H. Griffith	78.200	78.200		Fee	5-6-66 D3296-222
86766	W.H. Bonson, et ux	52.687	52.687		Fee	7-3-62 D1671-889
86767	S. Rodriguez	81.584	1909	01.584	Fee	7-18-66 D3368-506
86768	A. Engwald et al	4419	271,016	1258	Fee	7-29-67 D3538-312
86770	I.O. Thorsen	128.148	447,753	Fee	10-11-66 D3491-403	
86771	V.A. Ceramby et ux	94.710	94.710		Fee	7-12-66 D3362-849
86772	J.S. Leaha	1935	1935		Fee	6-26-67 D3683-15
86773	M. McCahmel et ux	4573	41,205		Fee	5-23-67 D3650-97
7JU3647	State of California				JU	7-27-71 D5138-36/49
REL-805	STATE TO CITY OF GLENORA				REL	6-27-71 R3729-254
DD 026707	STATE TO CITY OF GLENORA				DD	11-21-73 D6088-764

INTERSTATE
STATE OF CALIFORNIA
TRANSPORTATION DEPARTMENT OF
AGENCY PUBLIC WORKS
DIVISION OF HIGHWAYS

R/W MAP
NO. F-1233-2
07-LA-210-R43.3

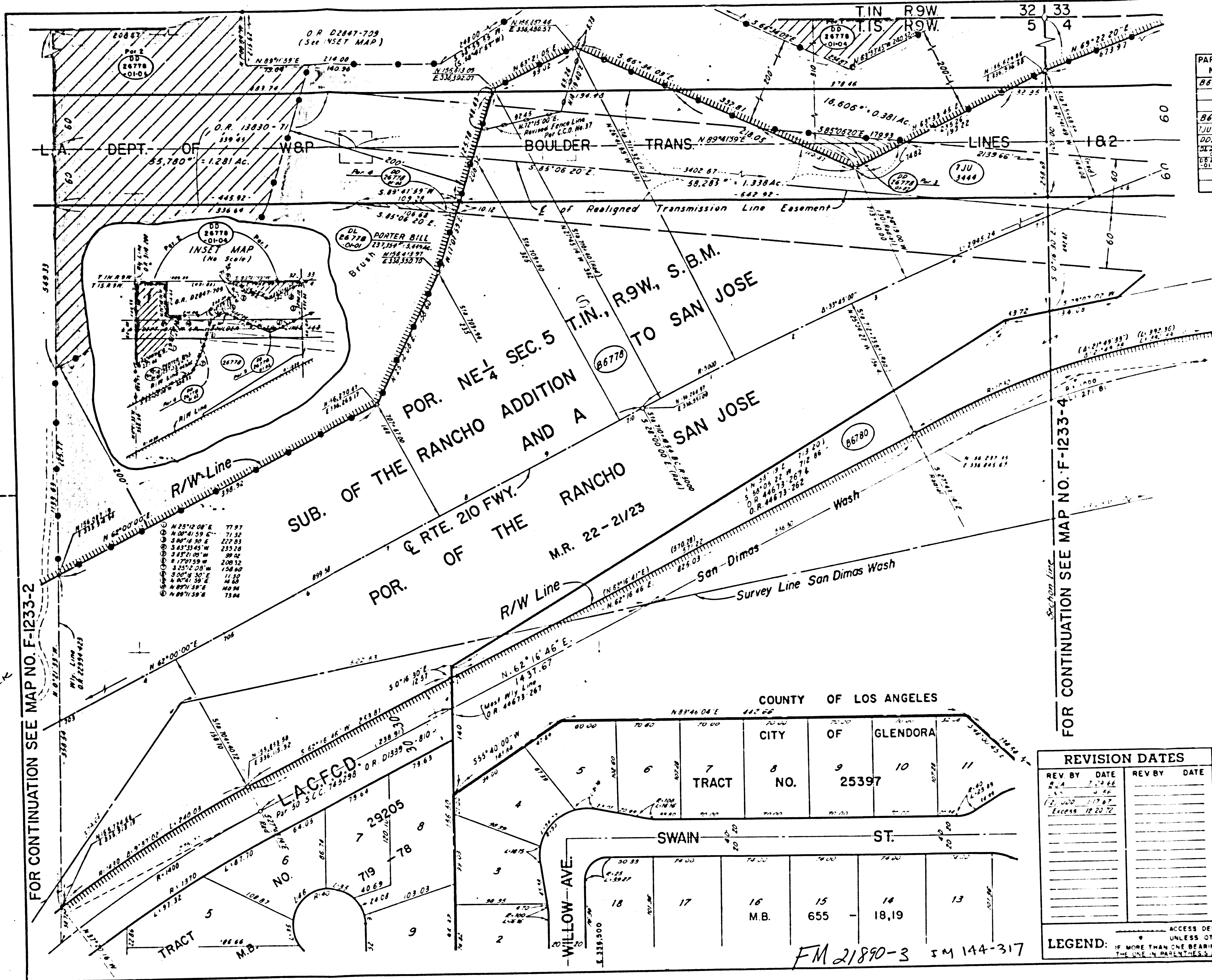
SCALE 1"=50' DATE 7-11-69
RWPE Westby SR Weatherholt

LEGEND:
 [Symbol] ACCESS DENIED [Symbol] EXCLUDES STREET AREA
 [Symbol] AREA IN SQUARE FEET UNLESS OTHERWISE NOTED
 [Symbol] PREVIOUS RECORD DATA [Symbol] INCLUDES EASEMENT AREA

FOR CONTINUATION SEE MAP NO. F-1233-3

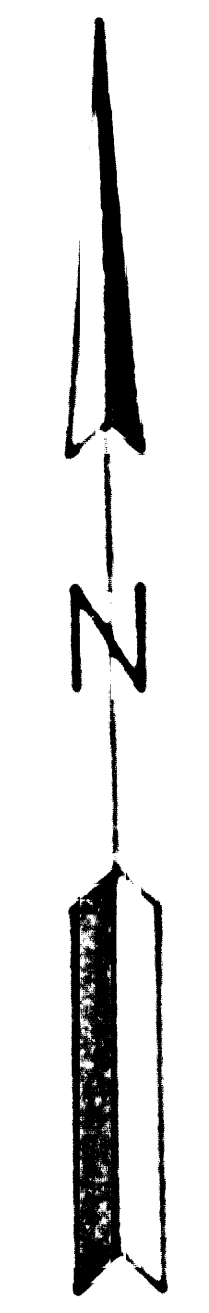
FM 21890-2
I.M.144-317

PARCEL NC.	GRANTOR OR GRANTEE	AREA*		RECORDING DATA	
		ACQ. BY	EXCESS TOTAL	DATE	OR.
B6778	C.L. Moller	796,908	383,047	796,903	Fee 36 67 03574-571
B6780	LACFGD				See Map No F-1233-4
JU-3444	State of Calif				JR
DD26778-01-02	CITY OF LA				DD 1-17-75 06532-683
DL26778	CITY OF GLENNDORA				DL EXPIRES 6-15-2006
DD26778-01-04	Glenndora Community Redevelopment Agency				DD 9-14-76 07240-629



FOR CONTINUATION SEE MAP NO. F-1233-2

FOR CONTINUATION SEE MAP NO. F-1233-4



N. 156,000

COUNTY OF LOS ANGELES	
CITY OF GLENNDORA	
TRACT NO.	TRACT NO.
5	6
7	8
9	10
11	
TRACT NO. 25397	
SWAIN ST.	
18	17
16	15
14	13
M.B. 655 - 18,19	

REVISION DATES			
REV BY	DATE	REV BY	DATE
J.D.C.	7-19-66		
J.D.C.	4-66		
J.D.C.	1-17-67		
	Excess 12-20-72		

INTERSTATE

STATE OF CALIFORNIA
 TRANSPORTATION AGENCY DEPARTMENT OF PUBLIC WORKS

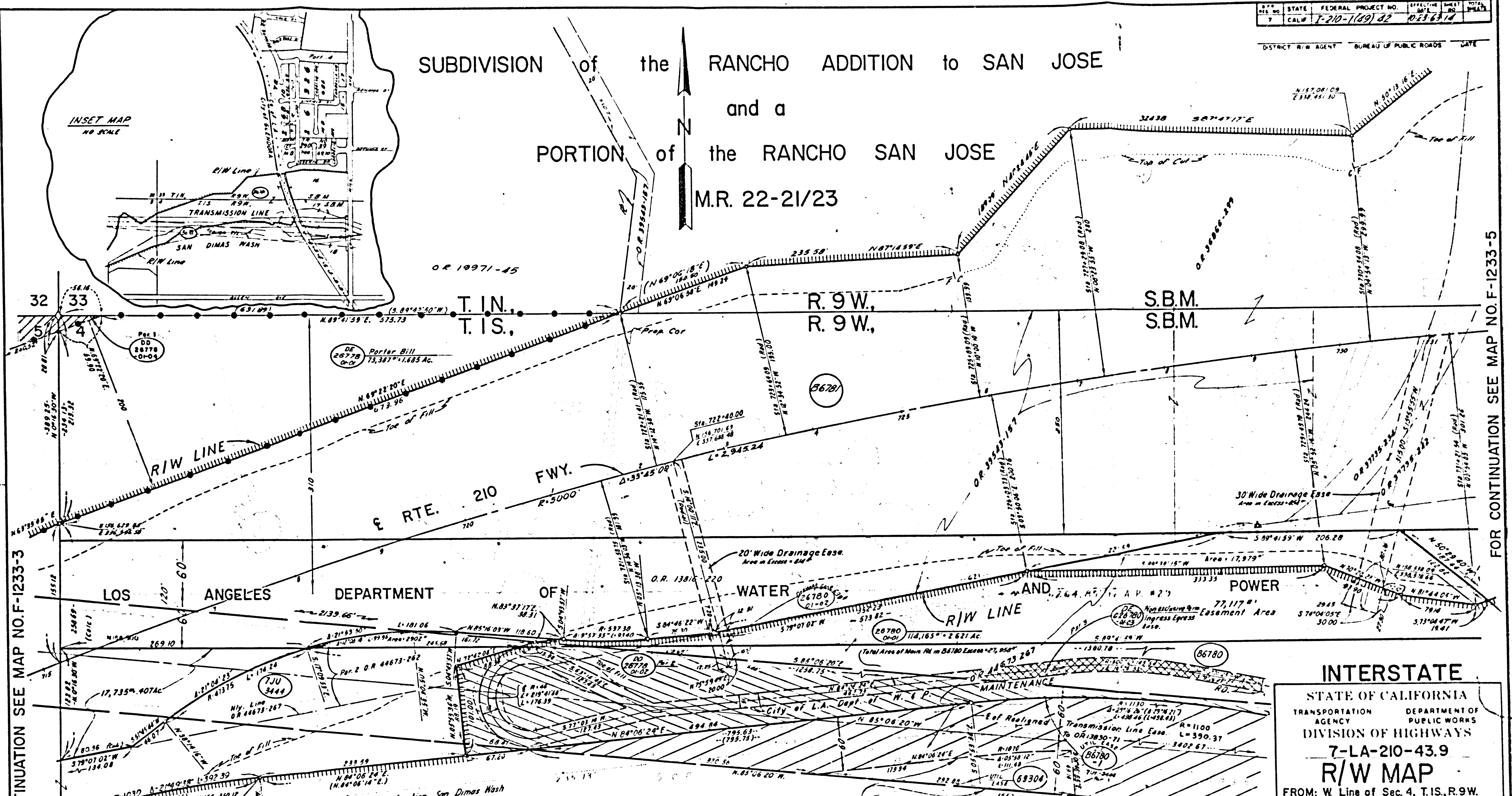
DIVISION OF HIGHWAYS
 07-LA-210-R43.6

R/W MAP
 Station 703 to Station 716
 FILE NO. F-1233-3
 DATE 7-11-69
 DRAFT J.D.C.
 RWPE Westby APPROVED Weatherholt

LEGEND: ACCESS DENIAL LINE TOP OF CUT UNLESS OTHERWISE NOTED ALL AREAS ARE IN SQUARE FEET IF MORE THAN ONE BEARING AND DISTANCE ARE SHOWN FOR A LINE, THE ONE IN PARENTHESES IS THE CORRECT ONE.

FM 21890-3 SM 144-317

SUBDIVISION of the RANCHO ADDITION to SAN JOSE
and a
PORTION of the RANCHO SAN JOSE
M.R. 22-21/23



FOR CONTINUATION SEE MAP NO. F-1233-3

FOR CONTINUATION SEE MAP NO. F-1233-5

INTERSTATE
STATE OF CALIFORNIA
TRANSPORTATION AGENCY
DEPARTMENT OF PUBLIC WORKS
DIVISION OF HIGHWAYS
7-LA-210-43.9
R/W MAP
FROM: W. Line of Sec. 4, T.1S., R.9W.
TO: 1324' W. of Lone Hill Ave.

SCALE: 1" = 50'
FILE NO: F-1233-4
DRAFT J.C.C. DATE: 7-11-69
R/WPE WESTBY APPROVED: Weatherholt

LEGEND: ACCESS DENIAL LINE
IF MORE THAN ONE BEARING AND DISTANCE ARE SHOWN FOR A LINE, THE ONE IN PARENTHESES IS PREVIOUS RECORD

REVISION DATES

REV. BY	DATE	REV. BY	DATE	REV. BY	DATE
B.J.A.	7-29-68	B.J.A.	3-11-68	B.J.A.	8-17-73
J.N.S.	11-4-66	Excelsior	12-15-72		
J.N.S.	1-23-67	Excelsior	1-2-72		

PARCEL NO.	GRANTOR OR GRANTEE	TO BE ACQUIRED	EXCESS	TOTAL	INST.	RECORDING DATE	O.R.
86780	L.A. County Flood Control District	315,144	114,164	48,677	C.C.	4-7-69	04330-67
86780-1	Thomas Co. Inc.	78760		Ac.	EST	7-11-73	05941-147
7JU3444	See Map No F-1233-3						
69304	City of Glendora	7778			DD	1-6-77	77-16078
DE 86780-1	CITY OF LOS ANGELES				DD	7-10-74	74-497-313
DD 26778-042	SEE F-1233-3						

IM 144-317

FM 21890-4

01-04	S-18 Map F123		
05-05	CITY OF L.A.	DE 52379	79-55-075