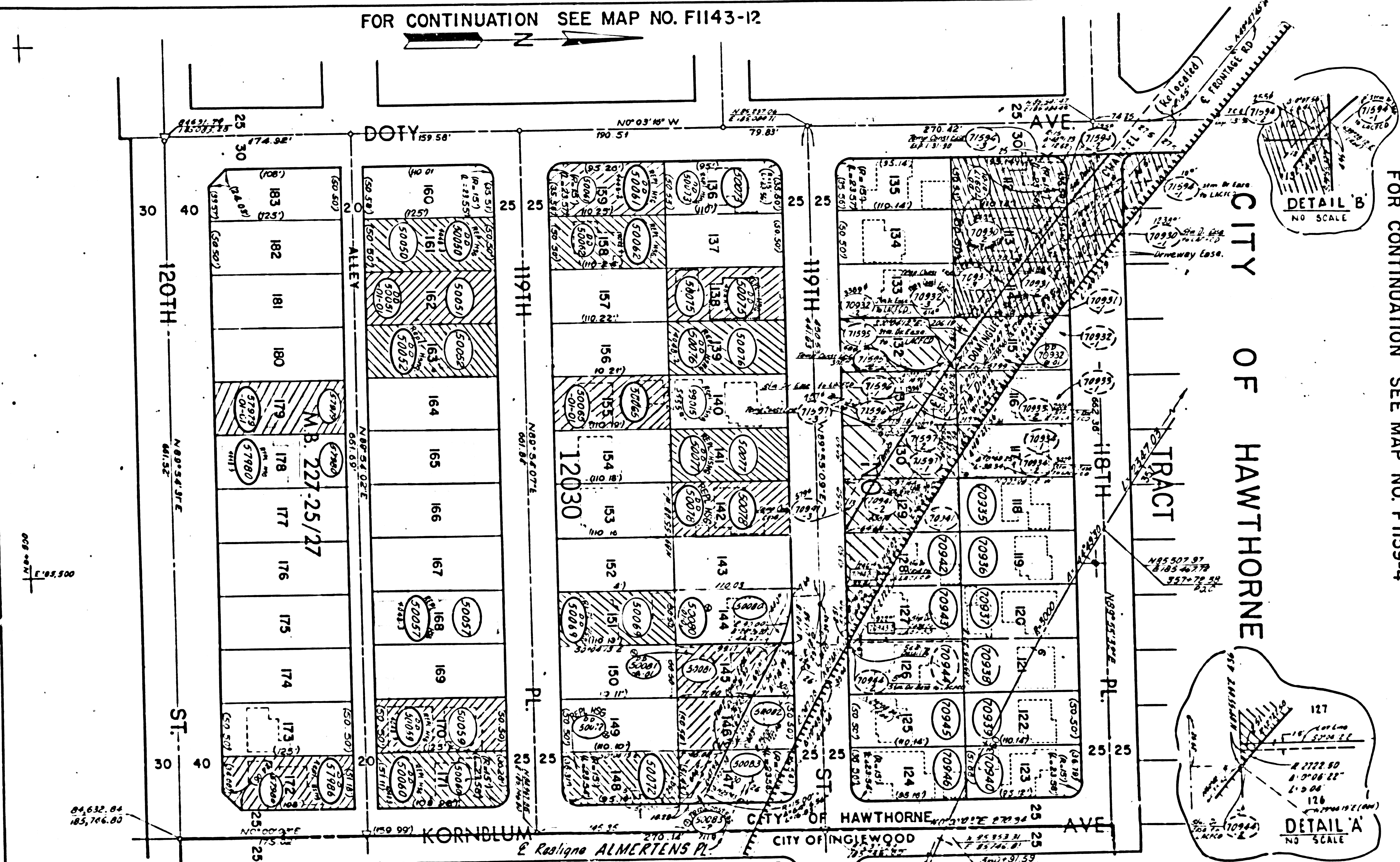


FOR CONTINUATION SEE MAP NO. F1143-12

STATE	FEDERAL PROJECT NO.	UNITS
CALIF.	1-105-3(312)3	3
DISTRICT & AGENT	FED. HWY. ADM.	DATE



FOR CONTINUATION SEE MAP NO. F1159-4

PARCEL NO	GRANTOR OR GRANTEE	ACQ	EXCESS	TOTAL	INST	RECORDING DATA DATE OR
50050	Picciano	6313	6313	6313	Fee	11-20-73 D6086730
50051	AMATO	6313	6313	6313	Fee	11-20-73 D6245921
50052	Martin	6313	6313	6313	Fee	5-3-74 D6250875
50057	WILLET	6313	6313	6313	Fee	4-18-73 D5816380
50059	Watson	6313	6313	6313	Fee	2-15-73 D4591603
50060	Merrill	6346	6346	6346	Fee	2-24-76 D6900807
50061	Brown	5526	5526	5526	Fee	6-8-73 D5901123
50062	Snyder	5568	5568	5568	Fee	10-13-71 D5221814
50065	PITTS	11120	5569	11120	Fee	6-13-75 D6649474
50069	Yates	5562	5562	5562	Fee	2-2-71 D5275168
50072	Lindner	5600	5600	5600	Fee	1-22-74 D6535957
50073	Lopez	5509	5509	5509	Fee	1-13-74 D6472178
50075	Galkins	5555	5555	5555	Fee	1-2-71 D5242403
50076	Greene	5555	5555	5555	Fee	1-2-74 D6478287
50077	Fosse	5555	5555	5555	Fee	5-27-75 D6647474
50078	Berwick	5555	5555	5555	Fee	10-17-73 D6112434
50080	Roberts	5555	5485	5555	Fee	11-20-73 D6093264
50081	Creighton	5556	4100	5556	Fee	10-8-73 D6825225
50082	Daves	5555	2835	5555	Fee	10-15-73 D6443451
50083	Nelson	5617	1645	5617	Fee	9-4-75 D6785440
57979	Bosserdet	6313	6313	6313	Fee	8-10-73 D6763584
57980	Hesson Jr	6313	6313	6313	Fee	6-24-73 D7134930
57986	Hagen	6241	6241	6241	Fee	9-7-75 D6782501
70930	REYES	5562	5562	5562	Fee	8-30-84-1048058
70931	LEBLANC	5562	5562	5562	Fee	8-19-84-382100
70932	JONES	5562	5562	5562	Fee	7-20-84-84-871479
70933	ALBERT	5562	5562	5562	Fee	9-16-83-1027639
70934	LEAKE	5562	5562	5562	Fee	10-26-83-1229884
70935	RENTZ	5562	5562	5562	Fee	10-18-83-1229884
70936	RYAN	5562	5562	5562	Fee	3-29-84-333779
70937	MOORHEAD	5562	5562	5562	Fee	8-20-84-1048061
70938	MARAMUSH	5562	5562	5562	Fee	10-4-83-1167009
70939	BAGUES	5562	5562	5562	Fee	11-17-83-1360047
70940	SEYMOUR	5650	5650	5650	Fee	6-26-84-756370
70941	KENNEDY	5562	5562	5562	Fee	7-27-84-302167
70942	WHITTAKER	5562	5562	5562	Fee	8-29-84-1048059
70943	BELFREY	5727	5727	5727	Fee	3-16-84-263807
70944	STEWART	5397	5397	5397	Fee	10-6-83-1177105
70945	DURAN	5562	5562	5562	Fee	10-13-83-1203213
70946	CUTLER	5737	5737	5737	Fee	4-19-84-84-870447
71596	TUSKEY	5562	5562	5562	Fee	9-20-84-1117427
71597	Gray	5562	5562	5562	Fee	8-24-84-1024161

PARCEL NO	GRANTOR OR GRANTEE	ACQ	EXCESS	TOTAL	INST	RECORDING DATA DATE OR
0050076	COMMUNITY DEV. CO. OF LA	00	7-31-89	1220975	DD	7-31-89-1220975
0050077	"	00	7-31-89	1220976	DD	7-31-89-1220976
0050078	"	00	7-31-89	1220977	DD	7-31-89-1220977
0057986	"	00	7-31-89	1221128	DD	7-31-89-1221128
0050081	JA WELLS CORP.	00	2-24-92	1221582	DD	2-24-92-1221582
0050050	CARTER	00	2-26-87	81-286535	DD	2-26-87-81-286535
0050052	COMMUNITY DEV. CO. OF LA	00	7-31-89	1220976	DD	7-31-89-1220976
0050055	"	00	7-31-89	1220977	DD	7-31-89-1220977
0050085	LAIRD	00	7-8-92	1223463	DD	7-8-92-1223463
0050079	RAND	00	7-9-92	1247254	DD	7-9-92-1247254
0050084	GARCIA	00	5-14-92	92-842061	DD	5-14-92-92-842061
0050050	CARTER	00	2-26-87	81-286535	DD	2-26-87-81-286535
0050052	COMMUNITY DEV. CO. OF LA	00	7-31-89	1220976	DD	7-31-89-1220976
0050055	"	00	7-31-89	1220977	DD	7-31-89-1220977
0050085	LAIRD	00	7-8-92	1223463	DD	7-8-92-1223463
0050079	RAND	00	7-9-92	1247254	DD	7-9-92-1247254
0050084	GARCIA	00	5-14-92	92-842061	DD	5-14-92-92-842061
0050050	CARTER	00	2-26-87	81-286535	DD	2-26-87-81-286535
0050052	COMMUNITY DEV. CO. OF LA	00	7-31-89	1220976	DD	7-31-89-1220976
0050055	"	00	7-31-89	1220977	DD	7-31-89-1220977
0050085	LAIRD	00	7-8-92	1223463	DD	7-8-92-1223463
0050079	RAND	00	7-9-92	1247254	DD	7-9-92-1247254
0050084	GARCIA	00	5-14-92	92-842061	DD	5-14-92-92-842061
0050050	CARTER	00	2-26-87	81-286535	DD	2-26-87-81-286535
0050052	COMMUNITY DEV. CO. OF LA	00	7-31-89	1220976	DD	7-31-89-1220976
0050055	"	00	7-31-89	1220977	DD	7-31-89-1220977
0050085	LAIRD	00	7-8-92	1223463	DD	7-8-92-1223463
0050079	RAND	00	7-9-92	1247254	DD	7-9-92-1247254
0050084	GARCIA	00	5-14-92	92-842061	DD	5-14-92-92-842061

INTERSTATE
STATE OF CALIFORNIA
BUSINESS & TRANSPORTATION AGENCY
DEPARTMENT OF TRANSPORTATION
R/W MAP
NO. F-1144-1
07-LA-105-40(5.2)
DATE 7-30-89
SR D. LAUGHLIN

LEGEND:
ACCESS DENIED + EXCLUDES STREET AREA
AREA IN SQUARE FEET UNLESS OTHERWISE NOTED
PREVIOUS RECORD DATA INCLUDES EASEMENT AREA

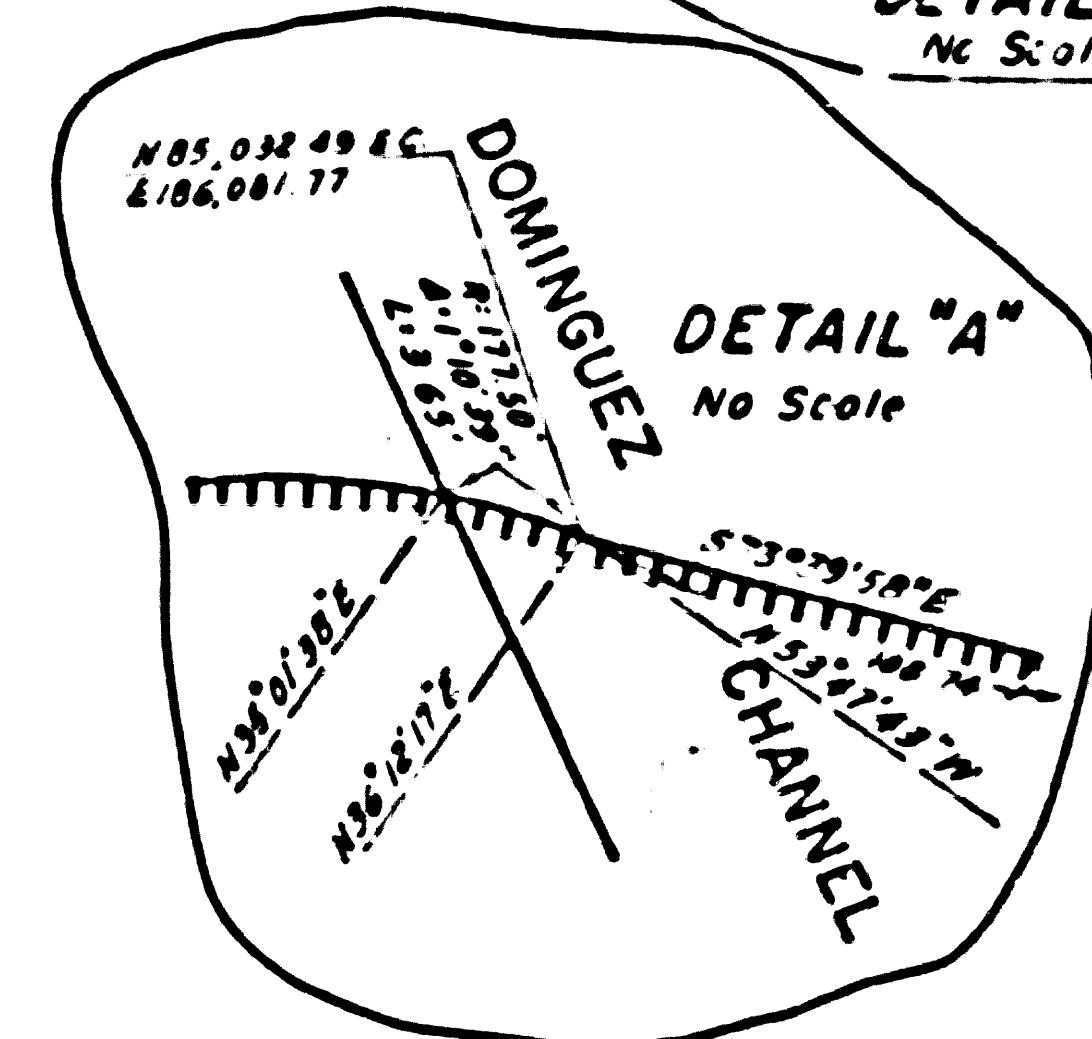
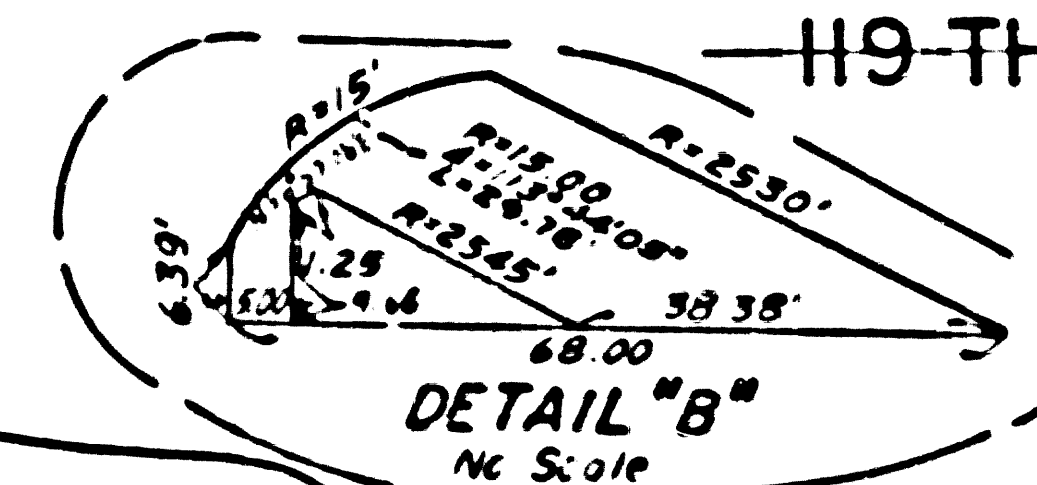
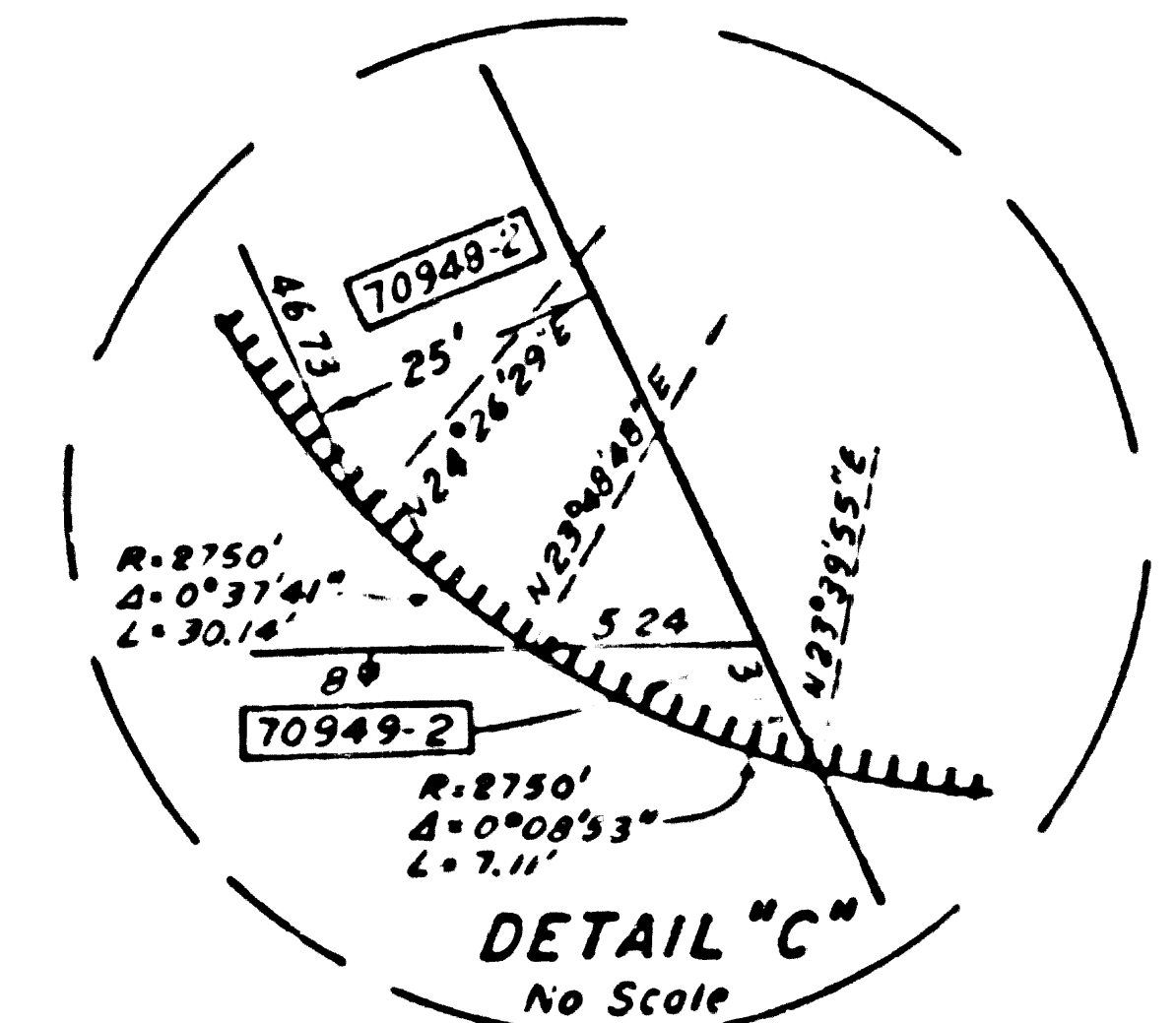
F.M. 21903-1 F1143-22433

FOR CONTINUATION SEE MAP NO F1159-4

TRACT NO. 16168
371-17

STATE FEDERAL PROJECT NO. 105-3(32)3
CALIF. DISTRICT R/W AGENT FED. HWT. ADM. DATE

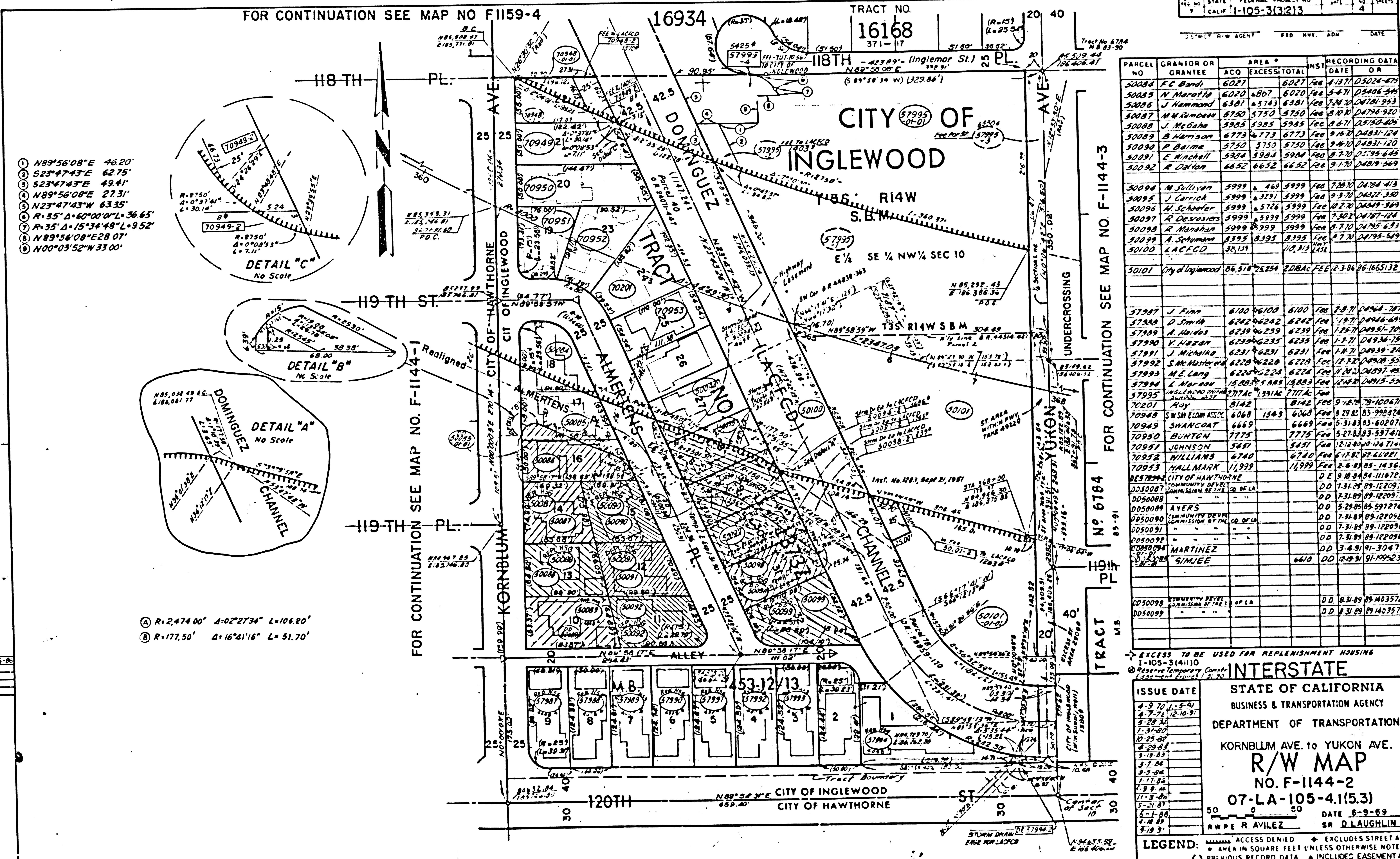
- ① N89°56'08"E 46.20'
- ② S23°47'43"E 62.75'
- ③ S23°47'43"E 49.41'
- ④ N89°56'08"E 27.31'
- ⑤ N23°47'43"W 63.35'
- ⑥ R=35" Δ=60°00'00"L=36.65'
- ⑦ R=35" Δ=15°34'48"L=9.52'
- ⑧ N89°56'08"E 28.07'
- ⑨ N00°03'52"W 33.00'



- Ⓐ R=2,474.00' Δ=0°27'34" L=106.20'
- Ⓑ R=177.50' Δ=16°41'16" L=51.70'

FOR CONTINUATION SEE MAP NO. F-1144-1

FOR CONTINUATION SEE MAP NO F-1144-3



PARCEL NO	GRANTOR OR GRANTEE	ACQ	EXCESS	TOTAL	INST	RECORDING DATE	OR
50084	F.C. Bandi	6027		6027	Fee	4-18-71	D5024-475
50085	N. Marotta	6020	4867	6020	Fee	5-4-71	D5406-545
50086	J. Hammond	6381	45743	6381	Fee	7-24-70	D4781-943
50087	M.M. Rimbeau	5750	5750	5750	Fee	9-10-70	D4798-920
50088	J. McGaha	5985	5985	5985	Fee	9-6-71	D5158-425
50089	B. Harrison	6773	6773	6773	Fee	9-15-70	D4831-124
50090	P. Balma	5750	5750	5750	Fee	9-16-70	D4831-120
50091	E. Mitchell	5984	5984	5984	Fee	8-7-70	D5195-645
50092	R. Dutton	6652	6652	6652	Fee	9-1-70	D4819-549
50094	M. Sullivan	5999	4460	5999	Fee	7-20-70	D4784-413
50095	J. Carrica	5999	4381	5999	Fee	9-3-70	D4822-350
50096	A. Schaefer	5999	45726	5999	Fee	9-2-70	D4849-549
50097	R. Desrosiers	5999	45999	5999	Fee	7-20-70	D4787-124
50098	R. Minahan	5999	45999	5999	Fee	9-7-70	D4795-671
50099	A. Schumann	4395	4395	4395	Fee	4-7-70	D4795-649
50100	LACFO	35,151		10,310	Fee		
50101	City of Inglewood	86,510	45254		FDBAC FEE	2-3-86	86-166513E
57987	J. Finn	6100	46100	6100	Fee	2-8-71	D4944-787
57988	D. Smith	6242	46242	6242	Fee	1-9-71	D4946-684
57989	A. Hildes	6239	46239	6239	Fee	1-26-71	D4951-709
57990	V. Harber	6235	46235	6235	Fee	1-7-71	D4934-191
57991	J. Michino	6231	46231	6231	Fee	1-4-71	D4939-210
57992	S. McMaster	6228	46228	6228	Fee	1-27-71	D4928-556
57993	M.E. Long	6224	46224	6224	Fee	11-21-70	D4927-493
57994	L. Marady	15,003	5,003	14,003	Fee	12-18-70	D4915-506
57995	WILLIAMSON	2774	15514	2774	Fee		
70201	Ray	8142		8142	Fee	9-14-70	70-100671C
70948	SWAN BLDG ASSOC	6068	1543	6068	Fee	8-29-82	85-99842A
70949	SHANCOAT	6669		6669	Fee	5-31-83	83-80207B
70950	BURTON	7775		7775	Fee	5-27-83	83-39741E
70951	JOHNSON	5451		5451	Fee	12-12-80	80-124740
70952	WILLIAMS	6740		6740	Fee	6-12-82	82-41087
70953	HALLMARK	11999		11999	Fee	2-6-83	85-145601
857894	CITY OF HAWTHORNE				DE	9-10-84	84-11672E
DD50087	COMMUNITY DEVELOPMENT				DD	7-31-89	89-1220919
DD50088	COMMISSION OF THE CO. OF LA				DD	7-31-89	89-1220919
DD50089	AVERS				DD	5-29-89	89-597274
DD50090	COMMUNITY DEVELOPMENT				DD	7-31-89	89-1220919
DD50091	COMMISSION OF THE CO. OF LA				DD	7-31-89	89-1220919
DD50092	MARTINEZ				DD	3-4-91	91-304771
DD50093	SINJEE				DD	12-18-91	91-199231
DD50098	COMMUNITY DEVELOPMENT				DD	8-31-89	89-1403572
DD50099	COMMISSION OF THE CO. OF LA				DD	8-31-89	89-1403573

EXCESS TO BE USED FOR REPLENISHMENT HOUSING
1-105-3(4)10

INTERSTATE

STATE OF CALIFORNIA
BUSINESS & TRANSPORTATION AGENCY
DEPARTMENT OF TRANSPORTATION

KORNBLUM AVE. to YUKON AVE.

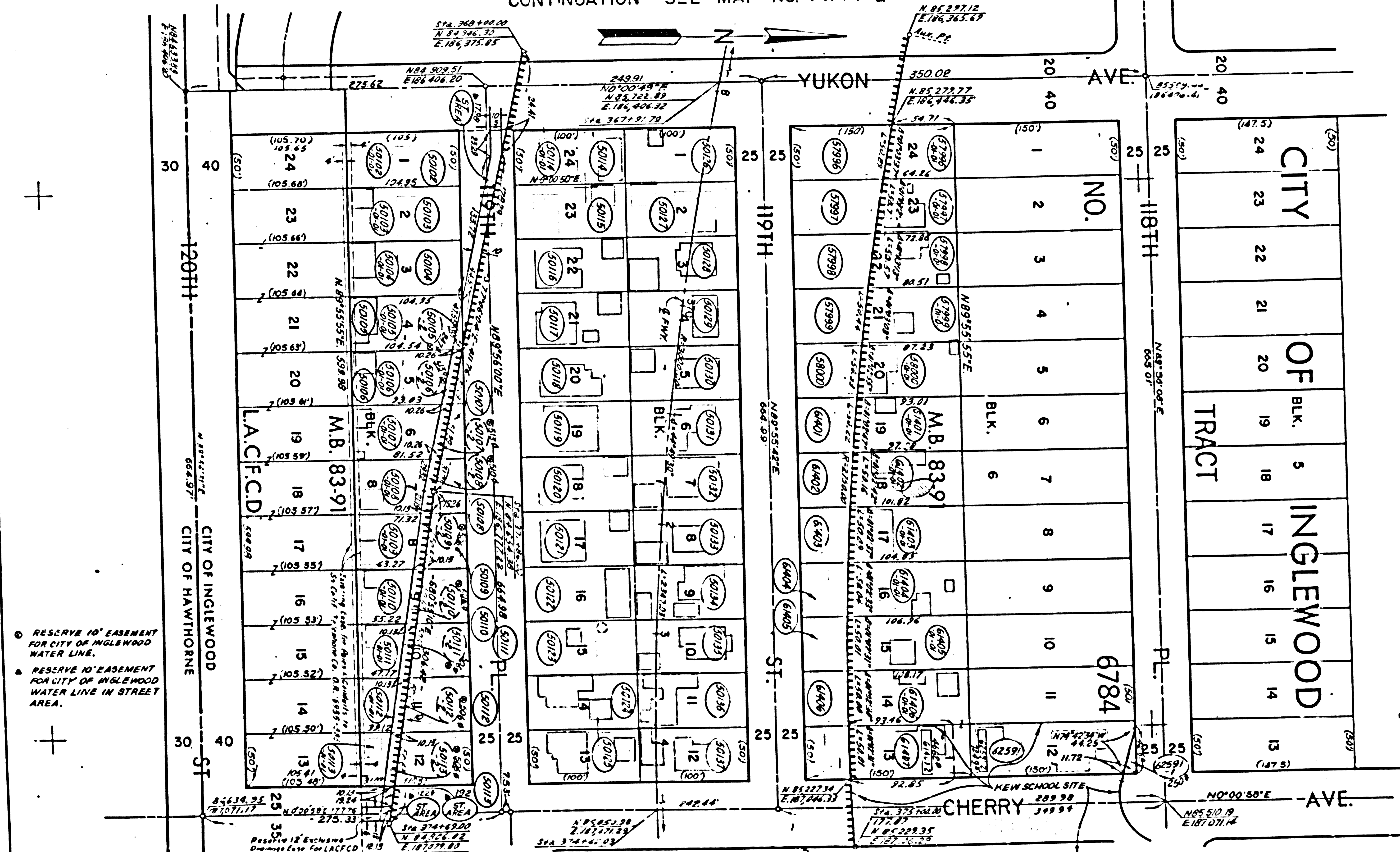
R/W MAP
NO. F-1144-2
07-LA-105-4.1(5.3)

ISSUE DATE: 6-9-89
DATE: 6-9-89
R/W P. AVILEZ SR. D. LAUGHLIN

LEGEND:
 (M) ACCESS DENIED
 (S) AREA IN SQUARE FEET UNLESS OTHERWISE NOTED
 (P) PREVIOUS RECORD DATA
 (A) INCLUDED EASEMENT AREA

F.M. 21983-2

CONTINUATION SEE MAP NO. F1144-2



PARCEL NO.	GRANTOR OR GRANTEE	AREA ACQUIRED	EXCESS	TOTAL	INST. DATE	RECORDING DATA O.R.
62591	DOUGHERTY	7.449		7.449	Feb 12/14/72	3,698-229

RESERVE 10' EASEMENT FOR CITY OF INGLEWOOD WATER LINE.
RESERVE 10' EASEMENT FOR CITY OF INGLEWOOD WATER LINE IN STREET AREA.

FOR CONTINUATION SEE MAP NO. F1144-4

PARCEL NO.	GRANTOR OR GRANTEE	AREA ACQUIRED	EXCESS	TOTAL	INST. DATE	RECORDING DATA O.R.
50102	R Whymen	5250	5250	5250	7-17-70	4779-52
50103	R Dates	5250	5850	5250	Feb 2-72	4624-200
50104	M Wade	5250	5250	5250	7-25-70	4751-843
50105	C Fletcher	5250	5247	5250	7-19-70	4671-215
50106	R Lines	5250	4319	5250	Feb 20-70	4773-494
50107	A Pennala	5250	4364	5250	Feb 7-70	4676-128
50108	A Erb	5250	5000	5250	Feb 7-70	4727-192
50109	B S Munson	5250	3265	5250	Feb 7-70	4614-151
50110	R Hennepfug	5250	2962	5250	Feb 6-70	4733-105
50111	G Atner	5250	2560	5250	Feb 9-70	4625-294
50112	H Howell	5250	2787	5250	Feb 7-70	4779-924
50113	R L Goidan	5250	1755	5250	Feb 7-70	4707-824
50114	G Hill	5000	5000	5000	Feb 16-70	4627-4-7
50115	A Nichols	5000	5000	5000	Feb 17-70	4635-101
50116	E M. ...	5000	5000	5000	Feb 19-70	4692-826
50117	V Lepescu	5000	5000	5000	Feb 11-70	4670-206
50118	W Cotton	5000	5000	5000	Feb 14-70	4771-231
50119	B Mensley	5070	5000	5000	Feb 1-70	4677-196
50120	C Littleton	5000	5000	5000	Feb 8-70	4676-112
50121	Dept of Vet Affairs	5000	5000	5000	Feb 2-70	4632-93
50122	T. Doe	5000	5000	5000	Feb 8-70	46301-593
50123	City of Inglewood	5000	5000	5000	Feb 2-70	43-133540
50124	M Bailey	5000	5000	5000	Feb 7-70	46761-320
50125	G. Sawd	5000	5000	5000	Feb 7-70	46780-616
50126	City of Inglewood	5000	5000	5000	Feb 7-70	43-133545
50127	L Mulligan	5000	5000	5000	Feb 8-70	46805-101
50128	P. Mastan	5000	5000	5000	Feb 7-70	46157-136
50129	D Baker	5000	5000	5000	Feb 1-70	46777-223
50130	G Spurling	5000	5000	5000	Feb 25-70	46767-126
50131	R. A. ...	5000	5000	5000	Feb 25-70	46812-46
50132	R. D. ...	5000	5000	5000	Feb 15-70	46831-128
50133	C. ...	5000	5000	5000	Feb 7-70	46822-95
50134	T. ...	5000	5000	5000	Feb 1-70	4679-251
50135	L. ...	5000	5000	5000	Feb 7-70	46764-427
50136	T. ...	5000	5000	5000	Feb 13-70	4670-20
50137	J. ...	5000	5000	5000	Feb 7-70	4771-170
50138	C. A. ...	7500	2970	7500	Feb 7-70	46758-305
50139	A. J. ...	7500	7500	7500	Feb 7-70	46761-343
50140	G. L. ...	7500	3018	7500	Feb 7-70	46761-116
50141	N. J. ...	7500	4197	7500	Feb 7-70	46761-304
50142	T. C. ...	7500	4510	7500	Feb 7-70	46761-150
50143	R. O. ...	7500	4776	7500	Feb 7-70	46761-331
50144	O. B. ...	7500	4777	7500	Feb 7-70	46761-264
50145	R. L. ...	7500	5171	7500	Feb 6-70	46751-251
50146	L. J. ...	7500	5299	7500	Feb 6-70	46751-255
50147	L. M. ...	7500	5382	7500	Feb 7-70	46751-118
50148	H. E. ...	8250	6169	8250	Feb 6-70	46747-420
50149	N. ...	8750	6750	8750	Feb 6-70	46752-97

INTERSTATE
STATE OF CALIFORNIA
TRANSPORTATION AGENCY DEPARTMENT OF PUBLIC WORKS
DIVISION OF HIGHWAYS
07-LA-105-4.2(5.4)
APPRAISAL MAP
Yukon Ave. to Cherry Ave.
FILE NO. F1144-3
DATE 8-2-69
DRAFT J. I. S.
RWPE S. AVILEZ
APPROVED R. LAUGHLIN

ISSUE DATE	DATES
JP 12-1-72	
5-8-73	
RD 1-15-80	
MG 4-26-84	
MS 9-5-84	
4-30-86	
7-14-88	
7-24-89	

LEGEND: ACCESS DENIAL LINE UNLESS OTHERWISE NOTED ALL AREAS ARE IN SQUARE FEET IF MORE THAN ONE BEARING AND DISTANCE ARE SHOWN FOR A LINE THE ONE IN PARENTHESES IS PREVIOUS RECORD

PARCEL NO.	GRANTOR OR GRANTEE	NO. BY ACQUIRED	AREA*	TOTAL	INS.	RECORDING DATA
			EXCESS			DATE O.R.
50138	E. Miller	6670		6670	Fee	5-20-70 D4719-101
50139	J.J. Crenshaw	6670		6670	Fee	11-10-71 D5252-40
50140	W. Weir, et ux	6670		6670	Fee	4-14-70 D4604-95
50141	V. Daniel	7408		7408	Fee	7-3-70 D4761-239
50142	E. Nabham	6670		6670	Fee	2-1-71 D4958-103
50143	L. Rutherford	6670		6670	Fee	12-11-70 D4914-104
50144	S. Aguirre	6670		6670	Fee	10-4-70 D4834-222
50145	E. Nemish & P.V.	7385		7385	Fee	5-14-70 D4712-836

PARCEL NO.	GRANTOR OR GRANTEE	NO. BY ACQUIRED	AREA*	TOTAL	INS.	RECORDING DATA	
			EXCESS			DATE O.R.	
50146	CAPALTO	7208		7208	Fee	7-6-71 D5113-894	
50147	CHRISTENSEN	6312		1825	6312	Fee	4-7-70 D4619-34
50148	GRETH	6312		1890	6312	Fee	5-7-70 D4106-900
50149	CLARK	6371		1935	6371	Fee	4-8-70 D4619-465
50150	WICKSTROM	6371		1990	6371	Fee	4-8-70 D4619-463
50151	MILLONZI	6371		2045	6371	Fee	6-29-70 D4164-391
50152	RUSSEL	6371		2100	6371	Fee	7-13-70 D4710-40
50153	BARTHOLOMEW	6310		2155	6310	Fee	5-3-71 D5042-19
73949		22		22	Fee		
73949		75		75	Fee		

PARCEL NO.	GRANTOR OR GRANTEE	NO. BY ACQUIRED	AREA*	TOTAL	INS.	RECORDING DATA
			EXCESS			DATE O.R.
62392	A.M. Montalvo	6668		6668	Fee	1-29-70 D6153-41
62393	G.C. Spemler	6668		6668	Fee	8-2-72 D5353-27
62394	WIDOFF	7387		7387	Fee	8-14-72 D5353-313
62395	G.T.E.C. Hodges	6668		6668	Fee	8-24-72 D5310-227
62396	SWANSON	6668		6668	Fee	1-8-73 D5722-227
62397	REKRI Fox	7402		7402	Fee	1-2-73 D5489-365
62398	D.F. & M. Numb	5865		5865	Fee	10-10-72 D5628-789
62399	R.F. Numb	5865		5865	Fee	2-2-73 D5722-639
62400	A.M.J. & M.P. Ayers	6994		6994	Fee	6-7-72 D5484-192

STATE	FEDERAL PROJECT NO.	DATE	SCALE
CALIF.	1-105-3(312)3		6"

PARCEL NO.	GRANTOR OR GRANTEE	NO. BY ACQUIRED	AREA*	TOTAL	INS.	RECORDING DATA	
			EXCESS			DATE O.R.	
50154	J.M. Wood	6370		2210	6370	Fee	6-1-70 D4143-135
50155	R. Robinson	6370		2265	6370	Fee	1-16-71 D4939-199
50156	H. Benjamin, Jr.	6370		2320	6370	Fee	8-14-70 D4806-412
50157	Dept of Vet Affairs	6369		1272	6369	Fee	5-5-70 D4704-727
50158	L. Cester	6369		6369	Fee	5-23-70 D4744-563	
50159	R. Kissam et ux	6380		6380	Fee	5-7-70 D4704-894	
50160	J. Post et ux	6380		6380	Fee	5-7-70 D4106-894	
50161	J. Chappel et ux	6368		6368	Fee	5-14-70 D4712-891	
50162	D. Schultze	6368		6368	Fee	5-14-70 D4712-891	
50163	L. Paige	6368		6368	Fee	5-18-70 D4744-444	
50164	R. Anderson	6380		6380	Fee	10-19-71 D5237-707	
50165	C.A. Purpitt	5847		5847	Fee	2-23-71 D4978-694	
50166	C. Bishop	5833		5833	Fee	5-27-72 D4143-424	
50167	W. Goss	7032		7032	Fee	1-14-71 D5025-043	
50168	P. Livermore	6875		6875	Fee	7-24-71 D4781-324	
50169	H. Harvey	6875		6875	Fee	5-6-72 D4705-505	
50170	H. Dickerson	6875		6875	Fee	2-8-72 D5092-444	
50171	D. Mack et ux	6875		6875	Fee	5-3-70 D4729-897	
50172	R. Brown	6875		6875	Fee	8-25-70 D4912-337	
50173	J. Aitken	6875		6875	Fee	5-10-70 D4736-954	
50174	A.G. Johnson	6875		6875	Fee	3-31-72 D5412-118	
50175	P. Harniss	6875		6875	Fee	9-7-71 D5183-457	
50176	Dept of Vet Affairs	6894		6894	Fee	5-5-70 D4704-753	
50177	E. Bunton et ux	5775		5775	Fee	5-7-70 D4704-859	
50178	R. McPherson	6897		6897	Fee	5-6-70 D4705-796	
50179	J.T. Fisher & P. W.	6875		6875	Fee	1-7-70 D4819-353	
50180	D. Hargut	6875		6875	Fee	6-26-70 D4752-946	
50181	Sheridan Army	6875		6875	Fee	9-22-70 D4838-623	
50182	A. Acosta	6875		6875	Fee	8-7-70 D4823-280	
50183	R. Wadert	6875		6875	Fee	8-7-70 D4823-280	
50184	R. Culburn	6875		6875	Fee	8-4-70 D4823-280	
50185	R. Callaghan, Jr.	6875		6875	Fee	7-29-70 D4823-280	
50186	G. Commlander	6875		6875	Fee	8-12-70 D4823-280	
50187	D. Sandhorst	6732		6732	Fee	12-22-70 D4923-161	
50188	D. Loufaourou	5775		5775	Fee	7-16-70 D4833-388	
50189	V. King et ux	6835		6835	Fee	5-26-70 D4723-166	
50190	R. Schmitz	6876		4549	6876	Fee	5-3-70 D4823-280
50191	L. Manning	6876		4146	6876	Fee	10-18-70 D4744-444
50192	H. Kuhl et ux	6876		3712	6876	Fee	5-13-71 D4711-760
50193	D.J. Kolda	6876		3274	6876	Fee	2-1-71 D4958-510
50194	T. Wickmann et ux	6876		2845	6876	Fee	5-26-71 D4724-120
50195	H. Bergmann	6876		2412	6876	Fee	5-7-70 D4704-724
50196	R. Mitchell	6876		1969	6876	Fee	5-13-71 D4743-766
50197	D. Hagan et ux	6894		1627	6894	Fee	2-8-70 D4754-435
50198	Lewis	5775		2086	5775	Fee	4-4-85 D5367470
50199	A. D'Agos et ux	6668		6668	Fee	5-7-70 D4704-894	
61400	Valda W. Birt	6668		6668	Fee	8-20-71 D5165-439	
61401	J. Schwaner et ux	6668		6668	Fee	2-27-72 D4783-221	
61402	P. Brown	6668		6668	Fee	1-5-71 D4934-526	
61411	G.H. Martin et ux	6668		6668	Fee	6-8-72 D5007-048	
61412	M.H.L. Hunter	7047		7047	Fee	5-26-71 D5007-048	
61413	B. Stone	6875		4252	6875	Fee	8-11-70 D4704-724
72243	Slater	183		6,934	Fee	7-24-80 D46-93400	
72388	Gillum	5775		5228	5775	Fee	2-7-86 D46-161899

FOR CONTINUATION SEE MAP NO. F1144-3

FOR CONTINUATION SEE MAP NO. F1144-5

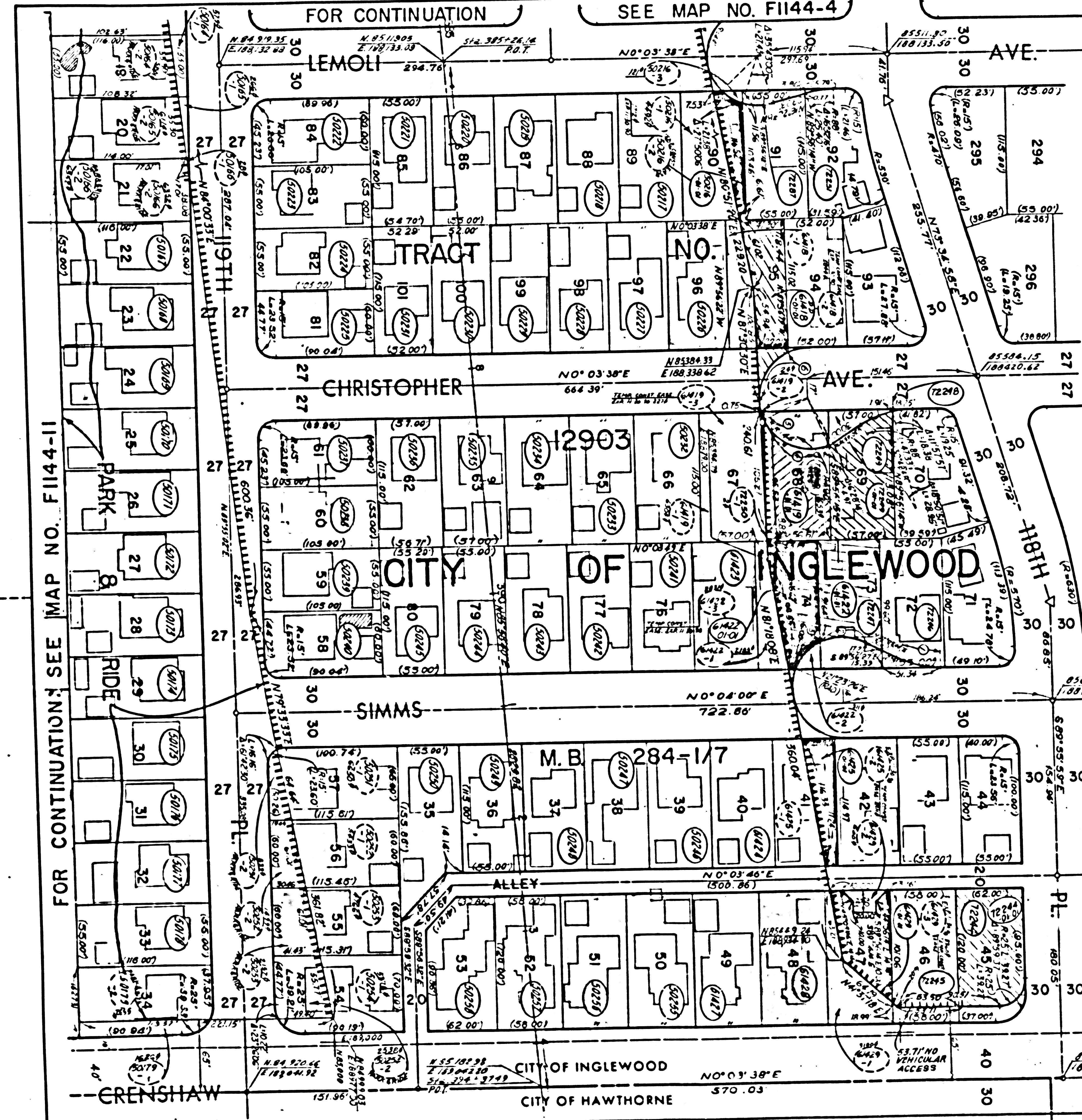
ISSUE	DATES	DATE
KK	5-5-79	
JP	11-30-72	
WL	5-8-73	
DM	5-8-84	
EM	1-9-86	
	4-9-87	
	11-16-87	
	7-29-88	
	7-29-88	
	7-29-88	
	8-28-91	

INTERSTATE
STATE OF CALIFORNIA
TRANSPORTATION AGENCY DEPARTMENT OF PUBLIC WORKS
DIVISION OF HIGHWAYS
07-LA-105-4.5(56)
APPRAISAL MAP
Cherry Ave to Lemoli Ave
SCALE 1" = 50'
DRAFT T.T.S.
RWPE LEONARD
FILE NO. F1144-4
DATE 6-9-69
APPROVED BERG

LEGEND: ACCESS DENIAL LINE TOP OF CUT TOE OF FILL
* UNLESS OTHERWISE NOTED ALL AREAS ARE IN SQUARE FEET
IF MORE THAN ONE BEARING AND DISTANCE ARE SHOWN FOR A LINE, THE ONE IN PARENTHESES IS PREVIOUS RECORD. A CATALOG PARCELS

FOR CONTINUATION SEE MAP NO. F1144-II

F.M. 21983-4 1144-6- 32200-C



PARCEL NO.	GRANTOR OR GRANTEE	TO BE ACQUIRED	AREA EXCESS	TOTAL	RECORDING DATE	RECORDING O.R.	PARCEL NO.	GRANTOR OR GRANTEE	TO BE ACQUIRED	AREA EXCESS	TOTAL	RECORDING DATE	RECORDING O.R.
50184	M. Curry & N. Place	8380	8380	8380	Fee 2-5-81	04270-500	50241	Lindgren & Sumner	8325	8325	8325	Fee 2-29-71	05141-91
50185	E. Rittinger	8380	8380	8380	Fee 6-5-70	04831-122	50242	Vernon C. Hansen et al.	8325	8325	8325	Fee 6-17-70	04743-158
50186	G.E. Barrentine et ux	8380	8380	8380	Fee 5-23-70	04673-302	50243	E. McCallister	8325	8325	8325	Fee 1-8-70	04825-294
50187	M. Atkins	8380	8380	8380	Fee 4-29-70	04694-120	50244	P. Howard	8325	8325	8325	Fee 2-8-70	04920-611
50188	E. Mathews	8380	8380	8380	Fee 4-7-70	04695-042	50245	Lindgren & Sumner	8342	8342	8342	Fee 5-28-70	04725-623
50189	W. Tolles	8380	8380	8380	Fee 9-15-70	04831-116	50246	A. Webb	8325	8325	8325	Fee 2-2-70	04759-594
50190	Harold A. Prington et al.	8380	8380	8380	Fee 9-4-70	04665-654	50247	C. Logue	8325	8325	8325	Fee 9-15-70	04831-102
50191	H. Galstein	8380	8380	8380	Fee 6-19-70	04740-633	50248	Lindgren & Sumner	8325	8325	8325	Fee 4-27-70	04816-404
50192	W. Wiegand	8380	8380	8380	Fee 9-15-70	04831-104	50249	Dept of Wt Affairs	8325	8325	8325	Fee 6-19-70	04745-814
50193	A. Kaper	8380	8380	8380	Fee 7-2-70	04781-961	50250	P. Fender	7159	7159	7159	Fee 6-17-70	04743-152
50194	R. Lindow et ux	8380	8380	8380	Fee 2-4-70	04781-957	50251	M. Arraga	7489	7489	7489	Fee 6-17-70	04743-152
50195	W. Calman	8380	8380	8380	Fee 5-12-70	04799-407	50252	D. Myers	6932	6932	6932	Fee 9-1-70	04819-567
50196	E. Witherspoon et al.	8380	8380	8380	Fee 3-24-70	04665-658	50253	M. Cole	6923	6923	6923	Fee 5-13-70	04711-727
50197	Dept of Wt Affairs	8380	8380	8380	Fee 9-2-70	04821-86	50254	L. Logan	7918	7918	7918	Fee 8-2-70	04821-92
50198	J. Bruch	8380	8380	8380	Fee 4-2-70	04821-89	50255	E. Harrodine	6960	6960	6960	Fee 8-8-70	04854-609
50199	D. Henna	7159	7159	7159	Fee 4-19-70	04806-96	50256	M. Miller	6900	6900	6900	Fee 8-2-70	05353-712
50200	J. Churchill	8325	8325	8325	Fee 5-25-70	04721-131	50257	A. Peterson	6960	6960	6960	Fee 8-7-70	05558-16
50201	R. Miller	8325	8325	8325	Fee 12-18-70	04720-591	50258	A. Smith et al	7015	7015	7015	Fee 0-9-70	04839-385
50202	M. E. Jack & B	8325	8325	8325	Fee 6-18-70	04805-59							
50203	P. Straton	8325	8325	8325	Fee 7-1-70	05109-276							
50204	J. Goodman	8307	8307	8307	Fee 7-29-70	05141-88	61419	CC DICKERSON	5983	5983	5983	Fee 6-7-70	03899-55
50205	M. James	6268	6268	6268	Fee 7-28-70	04955-58	61419	FRANKLIN	6555	6555	6555	Fee 2-13-70	04799-854
50206	K. Hantz	5775	5775	5775	Fee 4-5-70	04740-633	61420	FRANKLIN	6325	6325	6325	Fee 8-4-92	0422717
50207	W. Hatcher	5775	5775	5775	Fee 4-7-70	04691-125	61421	FRANKLIN	6325	6325	6325	Fee 8-3-92	0419321
50208	M. McCormack	6238	6238	6238	Fee 4-28-70	04530-97	61422	FORREST	6325	6325	6325	Fee 12-24	06131-780
50209	P. G. M. Wyle Jr.	5960	5960	5960	Fee 4-10-70	04781-91	61423	R. Corbett	6325	6325	6325	Fee 7-10-70	04768-682
50210	E. Graham	5960	5960	5960	Fee 12-22-70	04874-64	61424	E. Roberts	6325	6325	6325	Fee 7-21-70	04758-36
50211	D. Hester	5960	5960	5960	Fee 12-7-70	04708-55	61425	KIRTLEY	6325	6325	6325	Fee 3-5-70	06190-44
50212	R. F. Randon	5960	5960	5960	Fee 9-11-70	04828-343							
50213	E. Gravel	5960	5960	5960	Fee 2-28-70	04843-850	61427	A. J. Dowkoff	6960	6960	6960	Fee 9-23-70	04839-879
50214	R. Martin	5967	5967	5967	Fee 1-26-70	04953-44	61428	B. W. Harris	6960	6960	6960	Fee 3-14-70	05389-287
50215	J. M. Curcheon	6355	6355	6355	Fee 5-27-70	04723-162	61429	B. J. Glaser	6960	6960	6960	Fee 8-29-70	05729-35
50216	J. L. Stark	6355	6355	6355	Fee 1-19-70	04911-66							
50217	E. Nicklas	6355	6355	6355	Fee 7-1-70	04691-129	50216	THORNTON	6325	6325	6325	Fee 8-8-84	04936010
50218	E. Burton	6355	6355	6355	Fee 4-13-70	04691-129							
50219	D. Sloan et ux	6358	6358	6358	Fee 4-10-70	04682-36							
50220	R. Foster & L. Foster	6166	6166	6166	Fee 3-24-70	04682-36							
50221	J. L. Pandl et ux	5775	5775	5775	Fee 4-6-70	04677-21							
50222	T. Hudson	5775	5775	5775	Fee 6-15-70	04740-63							
50223	F. Taylor	6238	6238	6238	Fee 7-30-70	04787-26							

CURVE DATA

W	R	D	L
1	25	26.75	41.40
2	44	37.32	52.15
3	78	49.04	72.70
4	144	66.72	96.33
5	240	90.00	126.00

PARCEL NO.	GRANTOR OR GRANTEE	TO BE ACQUIRED	AREA EXCESS	TOTAL	RECORDING DATE	RECORDING O.R.
72244	BROOKINS	7310	6380	7310	Fee 11-9-87	071786250
72245	POYTS	879		6960	Fee	
72246	LEAGUE	267		6325	Fee 7-28-86	06-919255
72247	HERRINGTON	6324	4979	6324	Fee 9-21-86	06-108701
72248	AMANTINE	12		7737	Fee 11-0-86	06-411221
72249	TUCKER	6554	5739	6554	Fee 2-28-85	05-224405
72250	MASGAR	6554	4899	6554	Fee 3-26-85	05-112086
72251	DAVIS	33		6597	Fee 1-20-87	07-13190
72252	LYONS	583		6326	Fee 4-28-86	06-411221
72253	ANTHONY				Fee 6-4-92	02-106375
72254	SHEPHERD				Fee 3-10-93	03-452659
72255	BANKS				Fee	

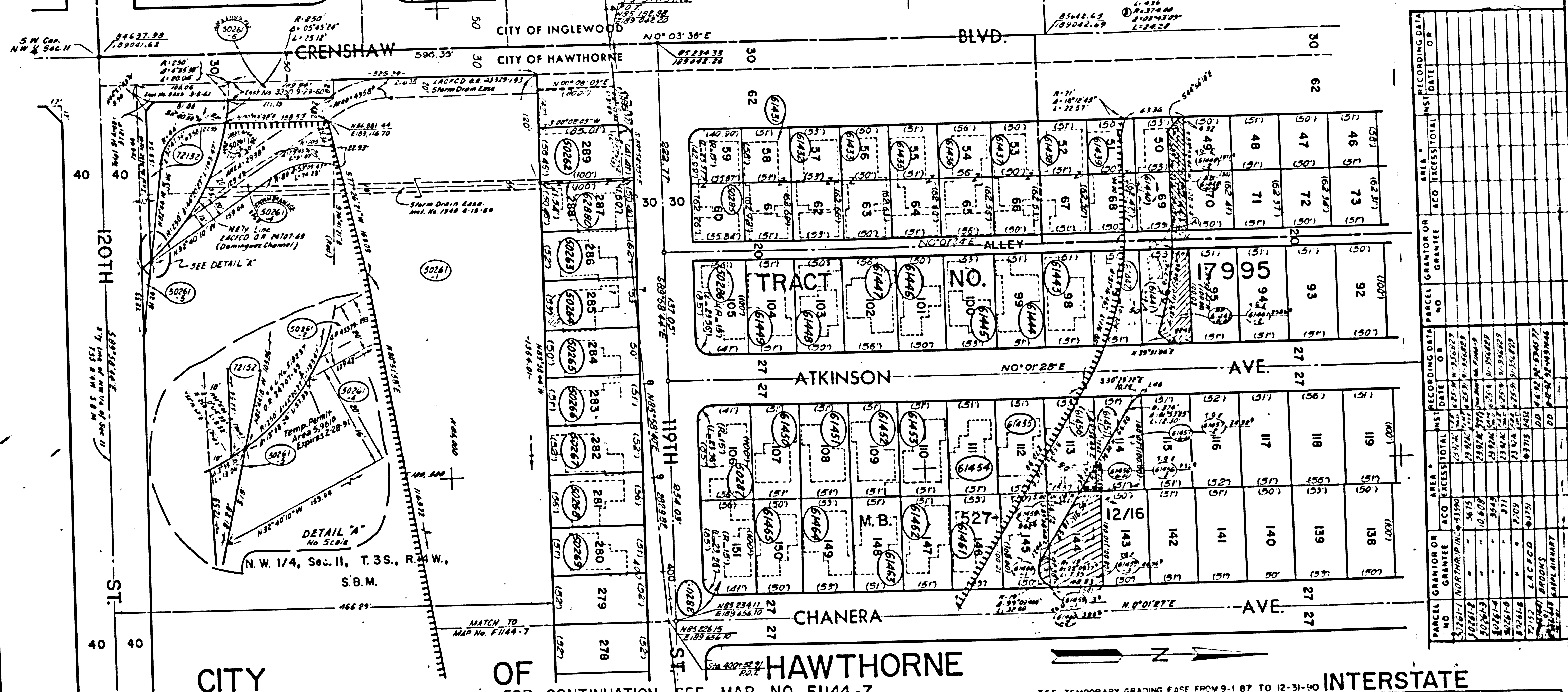
ISSUE DATES

DATE	DATE
RR 9-4-79	
RA 10-18-78	
RD 11-15-74	
RE 11-29-72	
RF 9-8-73	
RG 6-10-75	
RH 7-10-75	
RI 8-22-74	
RJ 9-18-83	
RK 7-10-84	
RL 1-17-86	
RM 1-14-90	
RN 1-30-92	

INTERSTATE
 STATE OF CALIFORNIA
 TRANSPORTATION AGENCY DEPARTMENT OF PUBLIC WORKS
 DIVISION OF HIGHWAYS
 07-LA-105-47 (5.8)
APPRAISAL MAP
 Lemoli Ave to Crenshaw Blvd
 SCALE 1" = 50'
 DRAFT 773
 RWPE LEONARD
 FILE NO. F1144-5
 DATE 10-7-87
 APPROVED BERG

LEGEND:
 ACCESS DENIAL LINE TOP OF CUT TOE OF FILL
 UNLESS OTHERWISE NOTED ALL AREAS ARE IN SQUARE FEET
 IF MORE THAN ONE BEARING AND DISTANCE ARE SHOWN FOR A LINE, A TRIANGLE INDICATES BEARING AREA
 THE LINE IN PARENTHESES IS A PREVIOUS RECORD

CITY OF INGLEWOOD
 FOR CONTINUATION SEE MAP NO. F1144-5



PARCEL NO.	GRANTOR OR GRANTEE	AREA*	RECORDING DATA	PARCEL NO.	GRANTOR OR GRANTEE	AREA*	RECORDING DATA
61454	F. RIDGWAY	5100	Fee 6-12-72 04738-071	61433	LEE THIERJUNG	6032	Fee 10-27-71 05235-734
62000	SCOTT	5200	Fee 02-27-70 06047-144	61435	LEE THIERJUNG	6151	Fee 11-17-71 05259-622
60462	FEN RAYOR	9757	Fee 5-3-70 04-46630-6	61436	DER PINTO	6752	Fee 10-9-73 06826-863
60263	ORSTROM	5200	Fee 8-19-74 06385-353	61437	S&Y SHOENBERG	6027	Fee 12-8-71 05200-510
60264	BEJ CALKA	5300	Fee 3-8-73 03780-661	61438	WEE SADLER	6146	Fee 11-0-71 05253-158
61265	W&J FAYE	5000	Fee 9-2-72 05557-844	61439	E ADOLPH	6024	Fee 11-0-71 05252-154
60266	PENDEK MATIGOSIAN	5100	Fee 11-22-73 05091-917	61440	H&M BISHOP	5100	Fee 9-22-73 05002-481
60267	A&R ROLLA	5200	Fee 1-29-73 05743-518	61441	C&T SCOTT	5100	Fee 5-14-81 01481-465
60268	RJ&D GUY	5600	Fee 11-16-73 06203-639	61444	BARNES	5300	Fee 7-24-84 04-88325
60269	M&L PETERSON	5100	Fee 1-11-84 04-35082	61445	P&N BARSDOON	5000	Fee 5-12-81 01-47194
60285	W&N REINHART	6398	Fee 1-11-84 04-35081	61447	PLA CASSELLMAN	5000	Fee 6-5-81 01-54633
60286	A BISHOP	5552	Fee 9-3-71 05181-381	61448	REN ALAMT	5000	Fee 5-12-81 01-47194
60287	C&E HAGEL	5552	Fee 11-1-74 06461-736	61449	HAMILTON	5100	Fee 5-22-73 05-70050
60288	LEYVA	5552	Fee 7-10-73 06083-637	61450	W&J ERICSON	5100	Fee 1-4-72 03307-531
61431	LEB BASS	6156	Fee 2-26-78 06982-158	61459	REED	5600	Fee 1-4-72 03307-531
61432	DEE FORSEN	6396	Fee 1-29-71 05234-843	61460	LEWIS	5000	Fee 1-14-72 03172-545

STATE OF CALIFORNIA
 TRANSPORTATION AGENCY DEPARTMENT OF PUBLIC WORKS
 DIVISION OF HIGHWAYS
 07-LA-105-49 (60)
APPRAISAL MAP
 Crenshaw Blvd to Chanera Ave.

FILE NO. F1144-6
 DATE 1-8-70
 DRAFT JTS & RD
 RWPE LEONARD

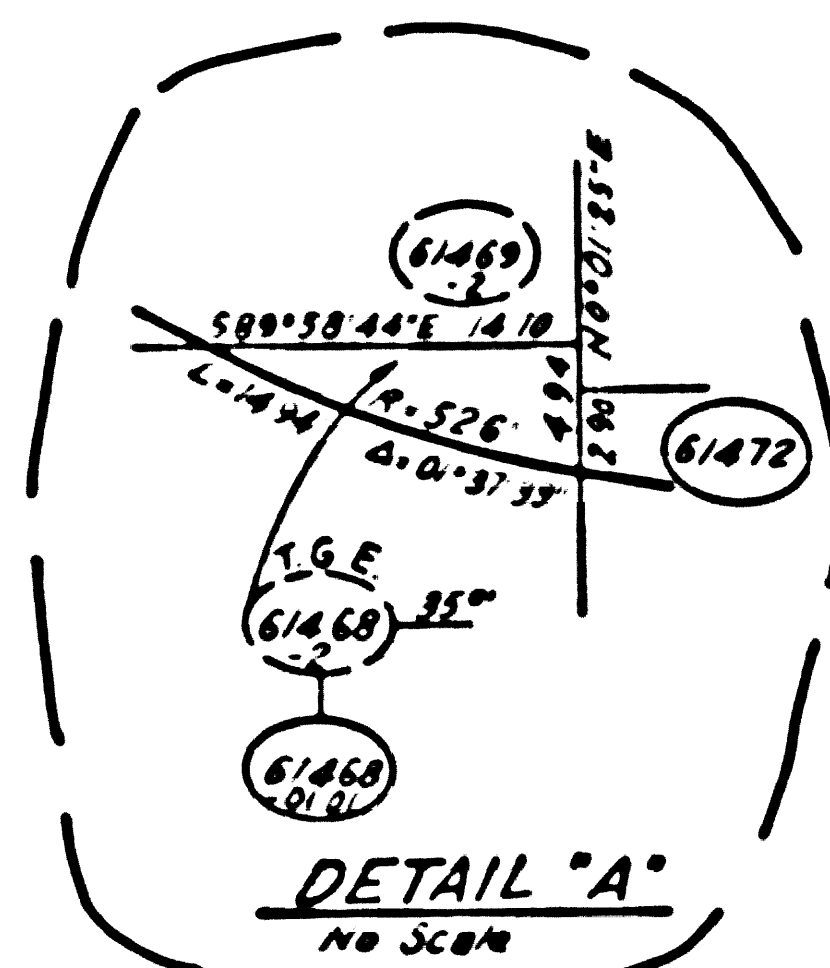
LEGEND:
 ACCESS DENIAL LINE TOP OF CUT
 UNLESS OTHERWISE NOTED ALL AREAS ARE IN SQUARE FEET
 IF MORE THAN ONE BEARING AND DISTANCE ARE SHOWN FOR A LINE,
 THE ONE IN PARENTHESES IS PREVIOUS RECORD * EXCLUDES STREET AREA & INCLUDES EASEMENT AREA

F.M. 21983-6 22910-C F1144-4 (6)

DISTRICT R/W AGENT BUREAU OF PUBLIC ROADS DATE:

PARCEL NO.	GRANTOR OR GRANTEE	AREA*	EXCESS	TOTAL	INST.	RECORDING DATE	DATE	OR
17997	D. Moran et al	5,552		5,552	Fee	8-26-78	04/11-971	
50277	SPEGG Dadaian	5,100		5,100	Fee	2-17-80	04584-188	
50270	P. BLACK	5,200		5,200	Fee	4-12-79	04738-873	
50283	W.A. Liddell	5,300		5,300	Fee	10-23-78	04862-913	
50271	ARR BLINDER	5,200		5,200	Fee	11-30-77	17-015738	
50272	JAR JANKOWSKI	5,100		5,100	Fee	11-21-80	1178536	
50273	SIMONE	5,100		5,100	Fee	11-1-78	06461-704	
50274	CHISHOLM	5,200		5,200	Fee	11-1-74	06461-740	
50275	MFC MELILLO	5,200		5,200	Fee	11-1-74	05693-911	
50276	MFL SPECIALE	5,200		5,200	Fee	11-1-74	06472-291	
50278	JFK De SPAIN	5,600		5,600	Fee	1-23-79	05166-144	
50279	KFL MCCARTHY	5,200		5,200	Fee	1-27-77	77-67489	
50280	D.L. BANES	5,100		5,100	Fee	3-19-72	05463-679	
50281	SENGIBLTERRA	5,100		5,100	Fee	7-13-75	06726-610	
50282	GIEBLER	5,200		5,200	Fee	9-2-79	06728-325	
50284	CFD LATIMER	5,492		5,492	Fee	3-12-79	06503-59	
50289	WILLIAMS	5,100		5,100	Fee	3-28-84	0437478	
50290	FEN PYBAS	5,552		5,552	Fee	3-3-79	06576-260	
50291	DEC SMITH	5,200		5,200	Fee	2-20-79	05766-141	
50292	MEE KORN	5,552		5,552	Fee	3-30-71	05010-200	
50293	THOMAS	5,000		5,000	Fee	4-20-83	83-471925	
50294	COUNTEE	5,100		5,100	Fee	12-1-81	81-1173671	
50295	DAVIS	5,552		5,552	Fee	4-24-83	83-451717	
50296	GEM VAUGHT	5,300		5,300	Fee	7-16-79	18-95-944	
50297	HEL HOLBACH	5,100		5,100	Fee	2-2-73	05814-122	
50299	MEN GONZALES	5,100		5,100	Fee	4-11-75	06615-816	
50300	GEJ MAHMEISTER	5,552		5,552	Fee	9-16-86	86-224883	
50302	MANN	5,600		5,600	Fee	8-29-81	81-847751	
50303	EEM BROOKS	5,752		5,752	Fee	3-8-83	83-1045046	
61467	PENN	5,000		5,000	Fee	7-9-81	81-820415	
61468	LEM JONES	5,600		5,600	Fee	8-28-84	08777-891	
61474	DONALD NELSON	5,300		5,300	Fee	9-19-74	06814-460	
50301	PFC SEGURA	5,600		5,600	Fee	7-27-71	04951-484	
61478	F. FURCHNER	5,000		5,000	Fee	3-19-71	05001-198	
61468	CANTOR	5,100	35	5,100	Fee	1-16-73	05733-70	
61469	HERBST	5,300	3674	5,300	Fee	3-5-74	06190-140	
61472	Mc CLINTOCK	5,100	4194	5,100	Fee	3-19-83	83-309601	
61473	HAMILTON	5,000		5,000	Fee	5-12-81	81-111943	
61475	BRIDGES	5,600		5,600	Fee	2-6-84	84-150840	
61479	MERENE	5,600	9	5,600	Fee	4-10-85	85-648148	
61480	CALDERON	5,600	1391	5,600	Fee	4-17-83	83-430504	
50298	MONTEILH	5,000		5,000	DD	6-4-92	92-104379	
50295	LAWSON	5,000		5,000	Fee	6-10-81	81-820415	
50261-1	ARTHUR INC	4,505		4,505	MAP NO F144-6			
72291	LARTIQUE	5,001	3329	5,001	Fee	5-3-83	83-439423	
72292	LEWIS	5,200	3768	5,200	Fee	1-15-86	86-30318	
72293	SMITH	5,001	4743	5,001	Fee	1-31-86	86-422392	
61481	FALAMAKI				DD	4-21-82	82-157692	

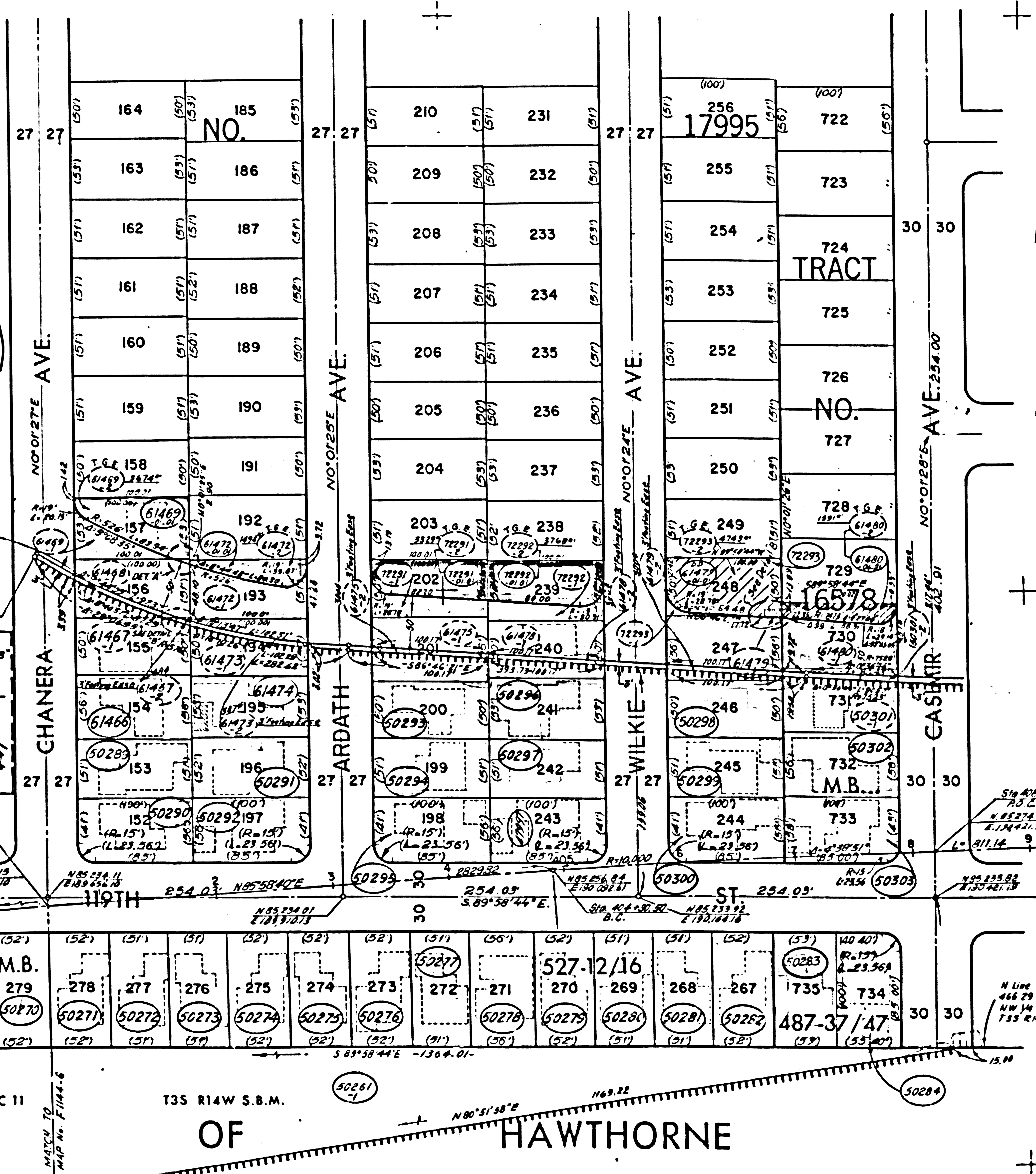
TRACT



FOR CONTINUATION SEE MAP NO. F144-5

NW 1/4 SEC 11

CITY



T3S R14W S.B.M.

OF

HAWTHORNE

FOR CONTINUATION SEE MAP NO. F144-8

TGE = Temp Grading Easement From 9-1-87 to 12-31-90

ISSUE	DATES	DATE
H.D.	7-30-89	6-3-83
J.S.	1-0-78	0-2-84
A.L.	6-30-72	1-9-86
R.D.	8-21-70	4-17-89
A.C.	8-22-72	
R.D.	7-1-72	8-10-82
R.D.	12-2-78	
R.D.	1-5-79	
R.D.	11-15-78	
R.D.	9-18-73	
D.M.	5-17-74	
F.M.	1-20-80	
H.L.	12-30-80	
	10-18-82	

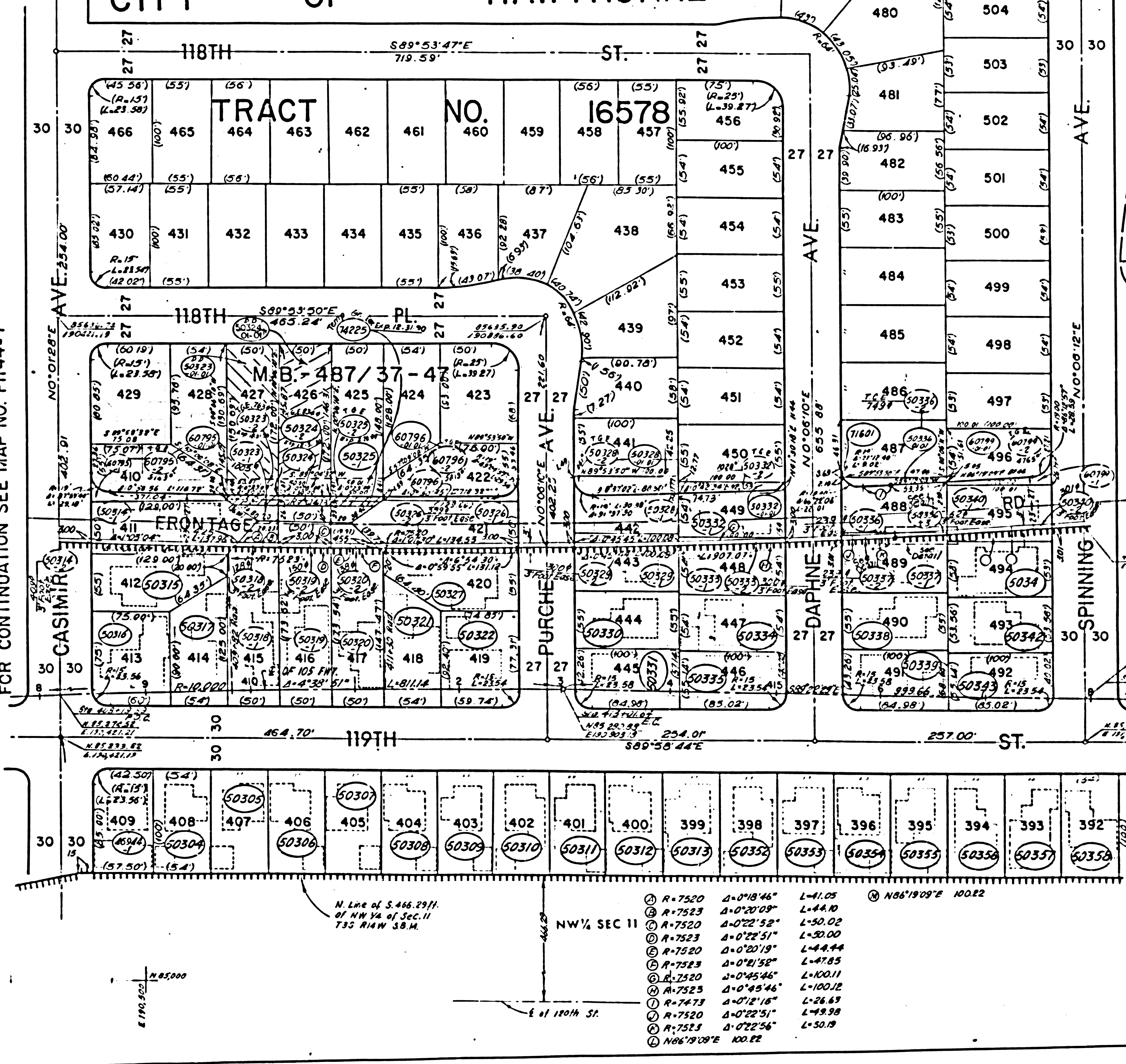
LEGEND: ACCESS DEMON LINE TOP OF CUT UNLESS OTHERWISE NOTED ALL AREAS ARE IN SQUARE FEET IF MORE THAN ONE BEARING AND DISTANCE ARE SHOWN FOR A LINE, THE 1ST IN PRECEDENCE IS PREVIOUS RECORD. A INCLUDES EASEMENT AREA.

INTERSTATE
 STATE OF CALIFORNIA
 TRANSPORTATION AGENCY DEPARTMENT OF PUBLIC WORKS
 DIVISION OF HIGHWAYS
 07-LA-105-5.0(6.1)
R/W MAP
 Chanera Ave to Casimir Ave.
 SCALE 1" = 30'
 DRAFT R.M.R.
 RWPE W.LEONARD
 FILE NO. F144-7
 DATE 2-27-82
 APPROVED T.BERG

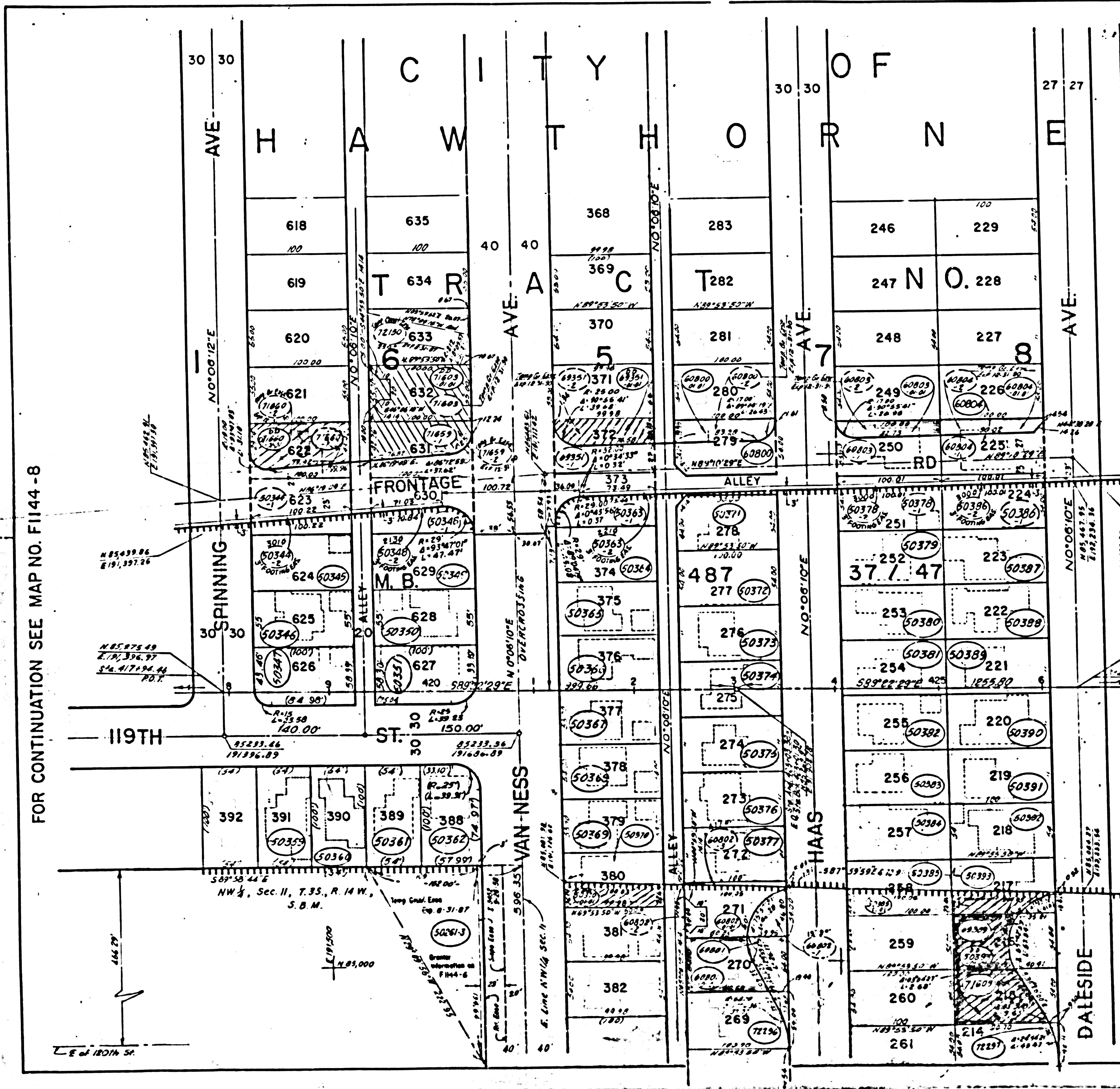
F.M. 21983-7

CITY OF HAWTHORNE

STATE OF CALIF. FEDERAL PROJECT NO. 1-105-3(12)3



FOR CONTINUATION SEE MAP NO. F1144-8



PARCEL NO.	GRANTOR OR GRANTEE	AREA AC.	EXCESS	TOTAL	RECORDING DATE	RECORDING OR.
7296	EVANS	314		314	5-17-70	48-796-325
7297	FRANSTAR, INC	128		128	5-17-70	48-796-325
7298	FRANSTAR, INC	5400	4069	9469	5-17-70	48-796-325
7299	FRANSTAR, INC	5400	4069	9469	5-17-70	48-796-325
7300	FRANSTAR, INC	5400	4069	9469	5-17-70	48-796-325
7301	FRANSTAR, INC	5400	4069	9469	5-17-70	48-796-325
7302	FRANSTAR, INC	5400	4069	9469	5-17-70	48-796-325
7303	FRANSTAR, INC	5400	4069	9469	5-17-70	48-796-325
7304	FRANSTAR, INC	5400	4069	9469	5-17-70	48-796-325
7305	FRANSTAR, INC	5400	4069	9469	5-17-70	48-796-325
7306	FRANSTAR, INC	5400	4069	9469	5-17-70	48-796-325
7307	FRANSTAR, INC	5400	4069	9469	5-17-70	48-796-325
7308	FRANSTAR, INC	5400	4069	9469	5-17-70	48-796-325
7309	FRANSTAR, INC	5400	4069	9469	5-17-70	48-796-325
7310	FRANSTAR, INC	5400	4069	9469	5-17-70	48-796-325
7311	FRANSTAR, INC	5400	4069	9469	5-17-70	48-796-325
7312	FRANSTAR, INC	5400	4069	9469	5-17-70	48-796-325
7313	FRANSTAR, INC	5400	4069	9469	5-17-70	48-796-325
7314	FRANSTAR, INC	5400	4069	9469	5-17-70	48-796-325
7315	FRANSTAR, INC	5400	4069	9469	5-17-70	48-796-325
7316	FRANSTAR, INC	5400	4069	9469	5-17-70	48-796-325
7317	FRANSTAR, INC	5400	4069	9469	5-17-70	48-796-325
7318	FRANSTAR, INC	5400	4069	9469	5-17-70	48-796-325
7319	FRANSTAR, INC	5400	4069	9469	5-17-70	48-796-325
7320	FRANSTAR, INC	5400	4069	9469	5-17-70	48-796-325

FOR CONTINUATION SEE MAP NO. F1144-10

DISTRICT	R/W AGENT	BUREAU OF PUBLIC ROADS	DATE
7	CALIF	T-105-3(312)3	11

PARCEL NO.	GRANTOR OR GRANTEE	AREA AC.	EXCESS	TOTAL	RECORDING DATE	RECORDING OR.
50360	B & M KOLSTER	5400		5400	5-6-70	48-796-325
50361	D & R COPELAND	5300		5300	5-7-70	48-796-325
50362	SHIRLEY HECK	5400		5400	7-10-70	48-796-325
50363	MJR DI MEO	5400	1636	7036	7-29-70	48-796-325
50364	F E HASENAUER	5500		5500	10-27-70	48-796-325
50365	B D MOORE	5400		5400	11-2-70	48-796-325
50366	GUINN	5500		5500	12-3-70	48-796-325
50367	DALTON	5500		5500	12-6-70	48-796-325
50368	FLORANT	5789		5789	1-18-71	48-796-325
50369	JEC HONEY	5500		5500	1-25-71	48-796-325
50370	C CIPOLLA et al	5889		5889	2-28-71	48-796-325
50371	J CRISALLI et al	5400		5400	3-31-71	48-796-325
50372	F D WHITE	5672		5672	1-18-71	48-796-325
50373	JES HORACE	5400		5400	6-26-71	48-796-325
50374	W WILSON	5300		5300	5-19-71	48-796-325
50375	PAVEL	5400		5400	7-4-71	48-796-325
50376	MEA BLACKMAN	5300		5300	7-22-71	48-796-325
50377	SMITH	5400		5400	8-9-71	48-796-325
50378	MEL BOURG	5300		5300	8-17-71	48-796-325
50379	KEM PISTEY	5400		5400	8-18-71	48-796-325
50380	JES FOSTER	5400		5400	8-14-71	48-796-325
50381	EER LOPEZ	5400		5400	5-11-71	48-796-325
50382	CEY PALMER	5400		5400	9-10-71	48-796-325
50383	HAMPTON JR	5400		5400	9-7-71	48-796-325
50384	ECME JAMES	5400		5400	9-26-71	48-796-325
50385	J WILLIAMS	5400		5400	9-7-71	48-796-325
50386	REI BOSO	5400		5400	1-30-72	48-796-325
50387	SCHORNACK	5400		5400	3-19-72	48-796-325
50388	LO COUR	5400		5400	7-8-72	48-796-325
50389	RING	5400		5400	10-2-72	48-796-325
50390	ISAAC	5400		5400	1-28-73	48-796-325
50391	JIM TATUM	5400	2410	7810	1-27-73	48-796-325
50392	MEN BURNE	5400		5400	4-15-73	48-796-325
50393	DEE MATSON	5400		5400	11-10-73	48-796-325
50394	MEN PRITIKIN	5400		5400	10-7-71	48-796-325
50395	GEM STERNSON	5400		5400	4-14-71	48-796-325
50396	ROCHETTE	5400		5400	9-30-70	48-796-325
50397	R BENNETT	5400	2434	7834	4-26-71	48-796-325
50398	C G HARRIS	5329		5329	2-21-71	48-796-325
50399	R L PORTER	5400		5400	1-14-72	48-796-325
50400	CIP FORTMAN	5300		5300	4-29-72	48-796-325
50401	JOHNSON	5400	2514	7914	4-9-73	48-796-325
50402	JAMES	5400		5400	10-27-73	48-796-325
50403	SCOTT	5400		5400	9-9-74	48-796-325
50404	HEROD	5350	1855	7205	6-8-75	48-796-325
50405	KINLEY	5400	1632	7032	6-24-76	48-796-325
50406	RULLEY	5400	1485	6885	4-9-76	48-796-325
50407	GARDNER	5400	3103	6503	7-3-76	48-796-325
50408	SOLOMON PATTON	5400	3064	6464	5-19-75	48-796-325
50409	FULLER	3500	5500	9000	7-3-74	48-796-325
50410	NORTHROP, INC	10608		10608	MSD 51	48-796-325
50411	PEARSON	220		220	5-7-70	48-796-325
50412	JORDAN	5500	3102	8602	8-31-74	48-796-325
50413	LAWRENCE	5500	4582	10082	7-27-74	48-796-325
50414	DAVIS	5400	3639	9039	8-23-73	48-796-325
50415	VICK	5400		5400	7-1-75	48-796-325
50416	CAMANO	5400		5400	5-20-76	48-796-325

INTERSTATE
STATE OF CALIFORNIA
TRANSPORTATION AGENCY DEPARTMENT OF PUBLIC WORKS
DIVISION OF HIGHWAYS
07-LA-105-53 (64)
APPRAISAL MAP
Spinning Ave to Daleside Ave

SCALE 1" = 50'
DRAFT T.S.P.J.S.
RWPE LEONARD

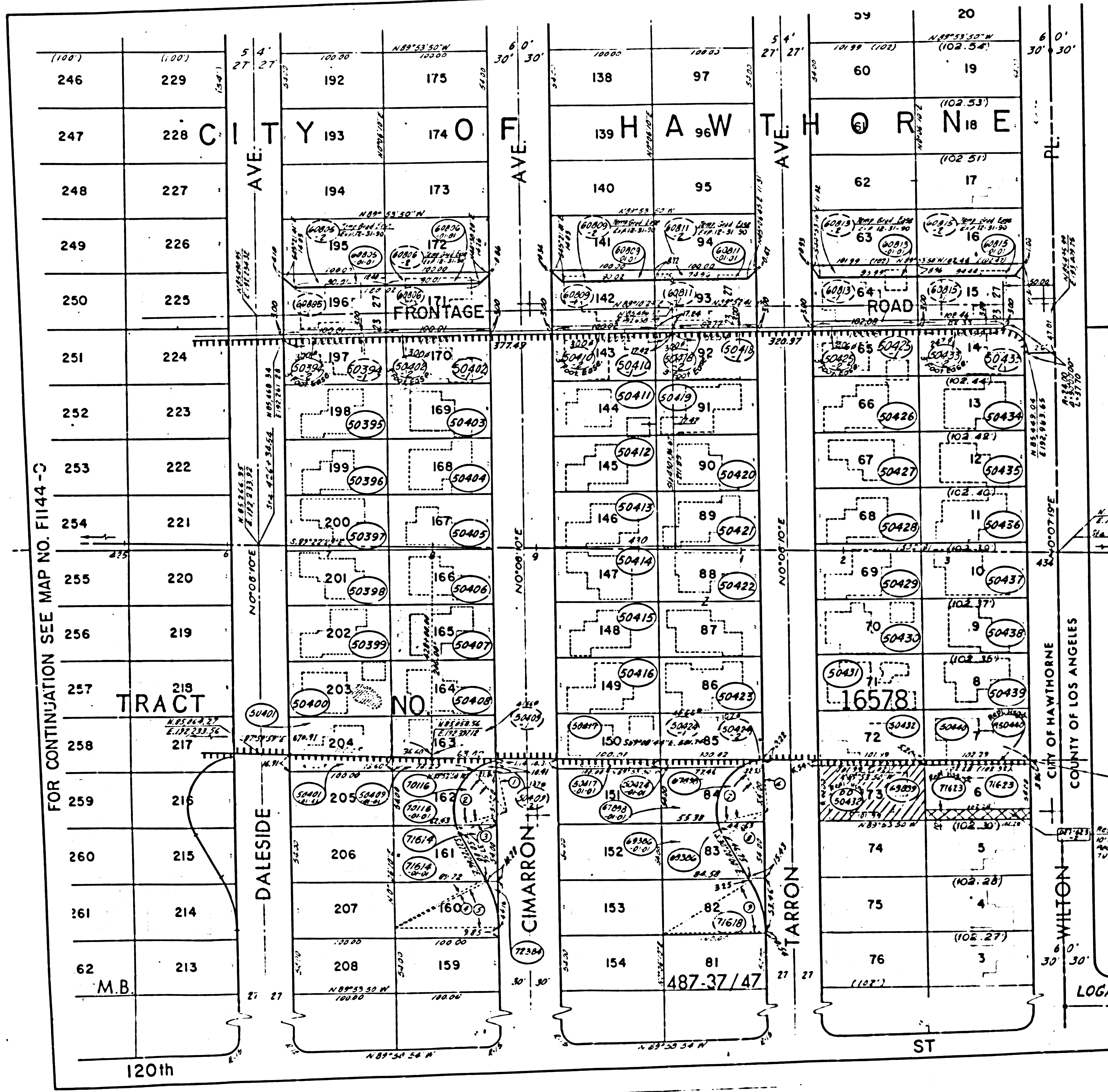
FILE NO F1144-9
DATE 11-5-69
APPROVED BERG

ISSUE DATES

DATE	DATE
R.K. 3-30-70	V.N. 1-31-72
R.D. 4-10-70	R.U. 1-31-74
R.P. 4-2-70	D.M. 1-31-74
R.Q. 4-2-70	D.M. 5-17-74
R.R. 8-14-70	A.R. 7-15-74
R.S. 8-8-70	M.S. 5-10-77
R.T. 8-19-70	E.M. 4-16-80
R.U. 12-7-70	M.G. 8-16-81
R.V. 1-5-71	M.G. 9-29-83
R.W. 2-8-71	M.G. 9-27-84
R.X. 2-11-71	M.G. 8-8-88
R.Y. 2-11-71	M.G. 1-2-84
R.Z. 2-11-71	M.G. 4-17-89
R.1. 4-12-71	P.S. 10-19-89
R.2. 4-12-71	P.S. 2-3-91

LEGEND:
ACCESS DENIAL LINE TOP OF CUT TOE OF FILL
UNLESS OTHERWISE NOTED ALL AREAS ARE IN SQUARE FEET.
IF MORE THAN ONE BEARING AND DISTANCE ARE SHOWN FOR A LINE, THE ONE IN PARENTHESES IS PREVIOUS RECORD. & INCL. 3 EASEMENT REA

F.M. 21983-9



PARCEL NO.	GRANTOR OR GRANTEE	AREA	EXCESS	TOTAL	DATE	RECORDING DATA
50431	RC GLOSSER	5508		5508	Fee 3-24-70	04665-653
50419	E. M. SHRAGG	5400		5400	Fee 6-9-70	04735-236
50424	W. H. GEORGE	5400	727	5400	Fee 7-8-70	04700-113
50839	PHILEN	5508	5508	5508	Fee 4-15-70	06818-838
50395	FEW PAN	5400		5400	Fee 1-14-72	05310-184
50396	C. J. E. B. YOUNG	5400		5400	Fee 10-19-71	05227-504
50397	L. ROBERTS JR.	5400		5400	Fee 8-20-70	06388-973
50398	RES. MADSEN	5400		5400	Fee 11-14-73	06060-705
50399	ALEX. WASON JR.	5400		5400	Fee 9-17-73	06415-702
50400	REN. PACE	5400		5400	Fee 2-9-72	05347-509
50401	DAVID SOY	5400	1525	5400	Fee 9-4-81	01-887508
50403	EED. WIGERT	5400		5400	Fee 5-1-81	01-455528
50404	J. E. RYAN	5400		5400	Fee 7-16-81	01-707114
50405	W. F. L. JONES	5400		5400	Fee 9-17-82	02-824227
50406	W. DANIEL	5400		5400	Fee 6-17-83	03-680-31
50407	J. E. M. DONNELLY	5400		5400	Fee 2-28-78	78-24386
50408	A. E. M. NATZ	5400		5400	Fee 3-21-80	80-286198
50409	C. E. B. PERRY	5400	1037	5400	Fee 4-23-74	02014-632
50411	REB. BURTON	5400		5400	Fee 7-23-81	81-73167
50412	JOHN LOGAN, et al.	5400		5400	Fee 5-5-83	83-300879
50413	MOORE	5400		5400	Fee 5-12-74	06275-749
50414	M. SABOVICH	5400		5400	Fee 10-19-71	05227-503
50415	R. RAMSDALL	5400		5400	Fee 1-16-73	03731-58
50416	HAMPTON	5400		5400	Fee 10-29-76	07300-54
50417	WILKENS	5400	966	5400	Fee 7-5-79	05934-367
50420	M. E. RAMIREZ	5400		5400	Fee 4-20-72	05433-377
50421	R. ALBERS	5400		5400	Fee 4-11-72	05422-750
50422	J. T. BRADLEY	10800		10800	Fee 6-29-73	05941-338
50423	REB. DREIER	5400		5400	Fee 4-11-72	05422-750
50426	HAMILTON & TURNER	5508		5508	Fee 6-18-81	81-604833
50427	L. EPTURENTINE	5508		5508	Fee 6-29-81	81-837900
50428	VERRETT	5508		5508	Fee 9-2-83	83-1032367
50429	PEG STEINBERG	5508		5508	Fee 5-17-74	06875-751
50430	COBURN	5508		5508	Fee 6-18-81	81-61638
50432	W. F. E. S. HOFFMAN	5508	539	5508	Fee 5-13-71	05056-7
50434	LENNON	5531		5531	Fee 7-23-74	06354-453
50435	P. J. KELLY	5530		5530	Fee 6-12-81	81-586064
50436	ANSLEY	5529		5529	Fee 9-8-82	82-244932
50437	J. E. S. ALDERMAN	5529		5529	Fee 4-19-71	05028-792
50438	W. E. A. ROUSH	5527		5527	Fee 3-16-79	79-291221
50439	G. F. COLEMAN	5526		5526	Fee 2-23-73	05941-338
50440	J. E. M. TOKA	5526	464	5526	Fee 4-23-73	05941-338
48815	T. SMITH	5533	888	5533	Fee 3-29-71	05006-204
50394	W. H. C. CHANG	5400		5400	Fee 6-5-71	05148-798
50418	L. M. PUTNAM	5400		5400	Fee 3-7-71	05150-4-9
50425	W. R. ADAMS	5508		5508	Fee 10-11-71	05221-244
67898	MANUEL	5400	3214	5400	Fee 7-9-85	85-786584
60805	DOUGLAS	5400	1879	5400	Fee 9-26-85	85-1120603
60806	MILLER	5400	1117	5400	Fee 9-24-85	85-1104436
60809	LATNER	5400	903	5400	Fee 8-26-76	06775-47
60811	PALMER	5400	816	5400	Fee 5-12-83	83-529980
60813	MILLS	5508	890	5508	Fee 7-14-80	01-897954
50402	SANDERS	5400		5400	Fee 1-27-86	06950-297
50410	SINGLETON, JR.	5400		5400	Fee 7-23-85	85-841249
50433	THOMAS	5535		5535	Fee 5-14-81	81-491464
69386	SMITH	5400	3873	5400	Fee 10-22-74	06450-925
70116	BERTELSON	5400	3466	5400	Fee 4-8-78	78-403876
71823	SCOTT	5525	5525	5525	Fee 6-17-81	81-601008

PARCEL NO.	GRANTOR OR GRANTEE	AREA	EXCESS	TOTAL	DATE	RECORDING DATA
75354	ALBURY	5400		5400	Fee 4-17-87	87-52929
71674	CLAYTON	5400		5400	Fee 10-15-89	89-120702
71678	CLAYTON	5400		5400	Fee 10-15-89	89-120702
0205412	CLAYTON	5400		5400	Fee 10-15-89	89-120702

- ① R-5000, 81°57'57", L-2440
- ② R-5000, 81°57'57", L-5175
- ③ R-5000, 81°57'57", L-8-21
- ④ R-5000, 81°57'57", L-2-23
- ⑤ R-5000, 81°57'57", L-45-73
- ⑥ R-5000, 81°57'57", L-23-78
- ⑦ R-5000, 81°57'57", L-62-23
- ⑧ R-5000, 81°57'57", L-14-82
- ⑨ R-5000, 81°57'57", L-53-12

INTERSTATE

ISSUE DATE	DATES	DATE
J.S.	1-8-70	R.D. 8-6-74
R.D.	8-8-70	R.D. 11-9-74
M.A.	5-9-70	M.A. 5-5-74
E.C.	8-24-70	E.C. 12-1-80
E.C.	1-4-71	E.C. 8-7-80
E.C.	3-19-71	E.C. 12-16-85
E.C.	6-31-71	E.C. 2-5-87
E.C.	7-26-71	E.C. 12-11-87
E.C.	9-11-71	E.C. 4-17-89
R.D.	8-30-71	R.D. 7-11-89
R.D.	1-5-72	R.D. 10-11-89
R.D.	9-7-72	R.D. 10-11-89
D.M.	5-20-74	D.M. 5-20-74

STATE OF CALIFORNIA
 TRANSPORTATION AGENCY, DEPARTMENT OF PUBLIC WORKS
 DIVISION OF HIGHWAYS
 07-LA-105-5.4 (66)
APPRAISAL MAP
 Daleside Ave. to Wilton Place.

FILE NO. F1144-10
 DATE 10-7-89
 APPROVED I. BERG

LEGEND: ACCESS DENIAL LINE TOP OF CUT TOE OF FILL
 UNLESS OTHERWISE NOTED ALL AREAS ARE IN SQUARE FEET
 IF MORE THAN ONE BEARING AND DISTANCE ARE SHOWN FOR A LINE, THE ONE IN PARENTHESES IS PREVIOUS RECORD. ▲ INCLUDES ESTIMATE 3/14

FOR CONTINUATION SEE MAP NO. F1145-1

F.M. 21983-10

