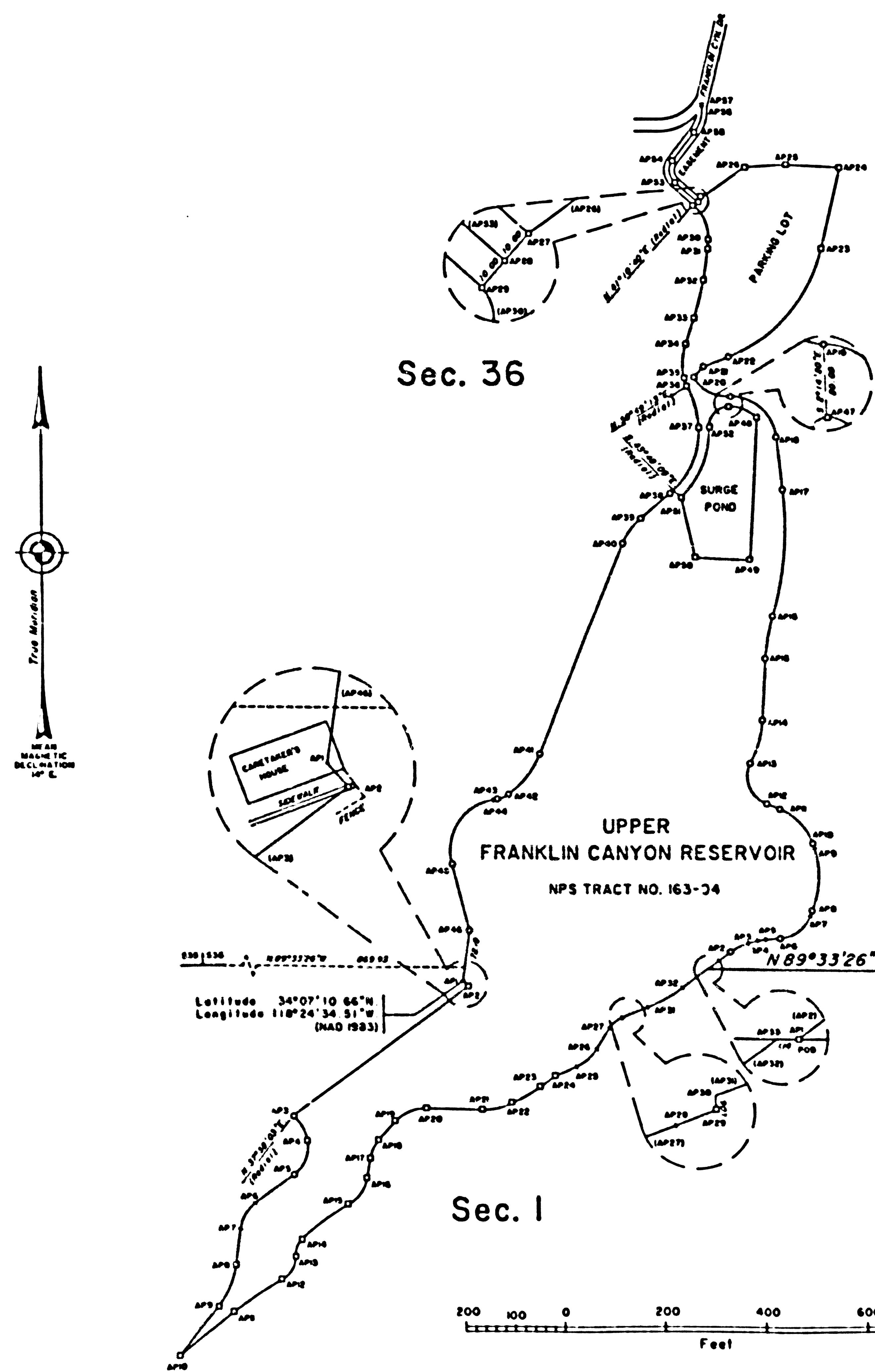


TOWNSHIPS I NORTH AND I SOUTH, RANGE 15 WEST, OF THE SAN BERNARDINO MERIDIAN, CALIFORNIA
METES-AND-BOUNDS SURVEY

ORIGINAL



COURSE	COURSE TYPE	BEARING or DELTA	LINE or ARC DIST. FEET	RADIUS FEET
AP1-AP2	LINE	S 89° 18' 18" W	30.00	0.00
AP2-AP3	LINE	S 11° 00' 00" W	30.00	100.00
AP3-AP4	LINE	S 89° 18' 18" W	30.00	0.00
AP4-AP5	LINE	S 11° 00' 00" W	30.00	100.00
AP5-AP6	LINE	S 89° 18' 18" W	30.00	0.00
AP6-AP7	LINE	S 11° 00' 00" W	30.00	100.00
AP7-AP8	LINE	S 89° 18' 18" W	30.00	0.00
AP8-AP9	LINE	S 11° 00' 00" W	30.00	100.00
AP9-AP10	LINE	S 89° 18' 18" W	30.00	0.00
AP10-AP11	LINE	S 11° 00' 00" W	30.00	100.00
AP11-AP12	LINE	S 89° 18' 18" W	30.00	0.00
AP12-AP13	LINE	S 11° 00' 00" W	30.00	100.00
AP13-AP14	LINE	S 89° 18' 18" W	30.00	0.00
AP14-AP15	LINE	S 11° 00' 00" W	30.00	100.00
AP15-AP16	LINE	S 89° 18' 18" W	30.00	0.00
AP16-AP17	LINE	S 11° 00' 00" W	30.00	100.00
AP17-AP18	LINE	S 89° 18' 18" W	30.00	0.00
AP18-AP19	LINE	S 11° 00' 00" W	30.00	100.00
AP19-AP20	LINE	S 89° 18' 18" W	30.00	0.00
AP20-AP21	LINE	S 11° 00' 00" W	30.00	100.00
AP21-AP22	LINE	S 89° 18' 18" W	30.00	0.00
AP22-AP23	LINE	S 11° 00' 00" W	30.00	100.00
AP23-AP24	LINE	S 89° 18' 18" W	30.00	0.00
AP24-AP25	LINE	S 11° 00' 00" W	30.00	100.00
AP25-AP26	LINE	S 89° 18' 18" W	30.00	0.00
AP26-AP27	LINE	S 11° 00' 00" W	30.00	100.00
AP27-AP28	LINE	S 89° 18' 18" W	30.00	0.00
AP28-AP29	LINE	S 11° 00' 00" W	30.00	100.00
AP29-AP30	LINE	S 89° 18' 18" W	30.00	0.00
AP30-AP31	LINE	S 11° 00' 00" W	30.00	100.00
AP31-AP32	LINE	S 89° 18' 18" W	30.00	0.00
AP32-AP33	LINE	S 11° 00' 00" W	30.00	100.00
AP33-AP34	LINE	S 89° 18' 18" W	30.00	0.00
AP34-AP35	LINE	S 11° 00' 00" W	30.00	100.00
AP35-AP36	LINE	S 89° 18' 18" W	30.00	0.00
AP36-AP37	LINE	S 11° 00' 00" W	30.00	100.00
AP37-AP38	LINE	S 89° 18' 18" W	30.00	0.00
AP38-AP39	LINE	S 11° 00' 00" W	30.00	100.00
AP39-AP40	LINE	S 89° 18' 18" W	30.00	0.00
AP40-AP41	LINE	S 11° 00' 00" W	30.00	100.00
AP41-AP42	LINE	S 89° 18' 18" W	30.00	0.00
AP42-AP43	LINE	S 11° 00' 00" W	30.00	100.00
AP43-AP44	LINE	S 89° 18' 18" W	30.00	0.00
AP44-AP45	LINE	S 11° 00' 00" W	30.00	100.00
AP45-AP46	LINE	S 89° 18' 18" W	30.00	0.00
AP46-AP47	LINE	S 11° 00' 00" W	30.00	100.00
AP47-AP48	LINE	S 89° 18' 18" W	30.00	0.00
AP48-AP49	LINE	S 11° 00' 00" W	30.00	100.00
AP49-AP50	LINE	S 89° 18' 18" W	30.00	0.00
AP50-AP51	LINE	S 11° 00' 00" W	30.00	100.00
AP51-AP52	LINE	S 89° 18' 18" W	30.00	0.00
AP52-AP1	LINE	S 11° 00' 00" W	30.00	100.00
SEGREGATION				
AP47-AP48	CURVE	S 89° 18' 18" W	67.70	70.00
AP48-AP49	LINE	S 89° 18' 18" W	100.00	0.00
AP49-AP50	LINE	S 11° 00' 00" W	112.00	0.00
AP50-AP51	CURVE	S 89° 18' 18" W	127.33	100.00
AP51-AP52	CURVE	S 89° 18' 18" W	63.50	0.00
CENTER LINE OF EASEMENT				
AP20-AP21	LINE	S 89° 18' 18" W	30.00	0.00
AP21-AP22	CURVE	S 89° 18' 18" W	67.70	70.00
AP22-AP23	LINE	S 89° 18' 18" W	30.00	0.00
AP23-AP24	LINE	S 89° 18' 18" W	30.00	0.00
AP24-AP25	LINE	S 89° 18' 18" W	30.00	0.00
AP25-AP26	LINE	S 89° 18' 18" W	30.00	0.00
AP26-AP27	LINE	S 89° 18' 18" W	30.00	0.00
AP27-AP28	LINE	S 89° 18' 18" W	30.00	0.00
AP28-AP29	LINE	S 89° 18' 18" W	30.00	0.00
AP29-AP30	LINE	S 89° 18' 18" W	30.00	0.00
AP30-AP31	LINE	S 89° 18' 18" W	30.00	0.00
AP31-AP32	LINE	S 89° 18' 18" W	30.00	0.00
AP32-AP33	LINE	S 89° 18' 18" W	30.00	0.00
AP33-AP34	LINE	S 89° 18' 18" W	30.00	0.00
AP34-AP35	LINE	S 89° 18' 18" W	30.00	0.00
AP35-AP36	LINE	S 89° 18' 18" W	30.00	0.00
AP36-AP37	LINE	S 89° 18' 18" W	30.00	0.00
AP37-AP38	LINE	S 89° 18' 18" W	30.00	0.00
AP38-AP39	LINE	S 89° 18' 18" W	30.00	0.00
AP39-AP40	LINE	S 89° 18' 18" W	30.00	0.00
AP40-AP41	LINE	S 89° 18' 18" W	30.00	0.00
AP41-AP42	LINE	S 89° 18' 18" W	30.00	0.00
AP42-AP43	LINE	S 89° 18' 18" W	30.00	0.00
AP43-AP44	LINE	S 89° 18' 18" W	30.00	0.00
AP44-AP45	LINE	S 89° 18' 18" W	30.00	0.00
AP45-AP46	LINE	S 89° 18' 18" W	30.00	0.00
AP46-AP47	LINE	S 89° 18' 18" W	30.00	0.00

A history of surveys is contained in the field notes.

This plat represents the metes-and-bounds survey of a portion of the Santa Monica Mountains National Recreation Area Boundary, National Park Service Tract No. 163-04, Townships 1 North and 1 South, Range 15 West, San Bernardino Meridian, California.

Lotlings and areas are as shown on the township plats approved October 7, 1896 and March 28, 1899.

Resurvey was executed by David H. Haller, Cadastral Surveyor, beginning June 3, 1993, and completed August 15, 1993, pursuant to Special Instructions dated April 13, 1992, Supplemental Special Instructions No. 1 dated July 13, 1992, and Supplemental Special Instructions No. 2 dated June 2, 1993, for Group No. 1141, California.

UNITED STATES DEPARTMENT OF THE INTERIOR
BUREAU OF LAND MANAGEMENT
Sacramento, California

This plat is strictly conformable to the approved field notes, and the survey, having been correctly executed in accordance with the requirements of law and the regulations of this Bureau, is hereby accepted.

For the Director
February 3, 1998
David J. Bish
Chief Cadastral Surveyor-California

F.M. 22047
I.M. 144-157

52 065-A

Ts. 1 N. & S., R. 15 W., S.B.M.