

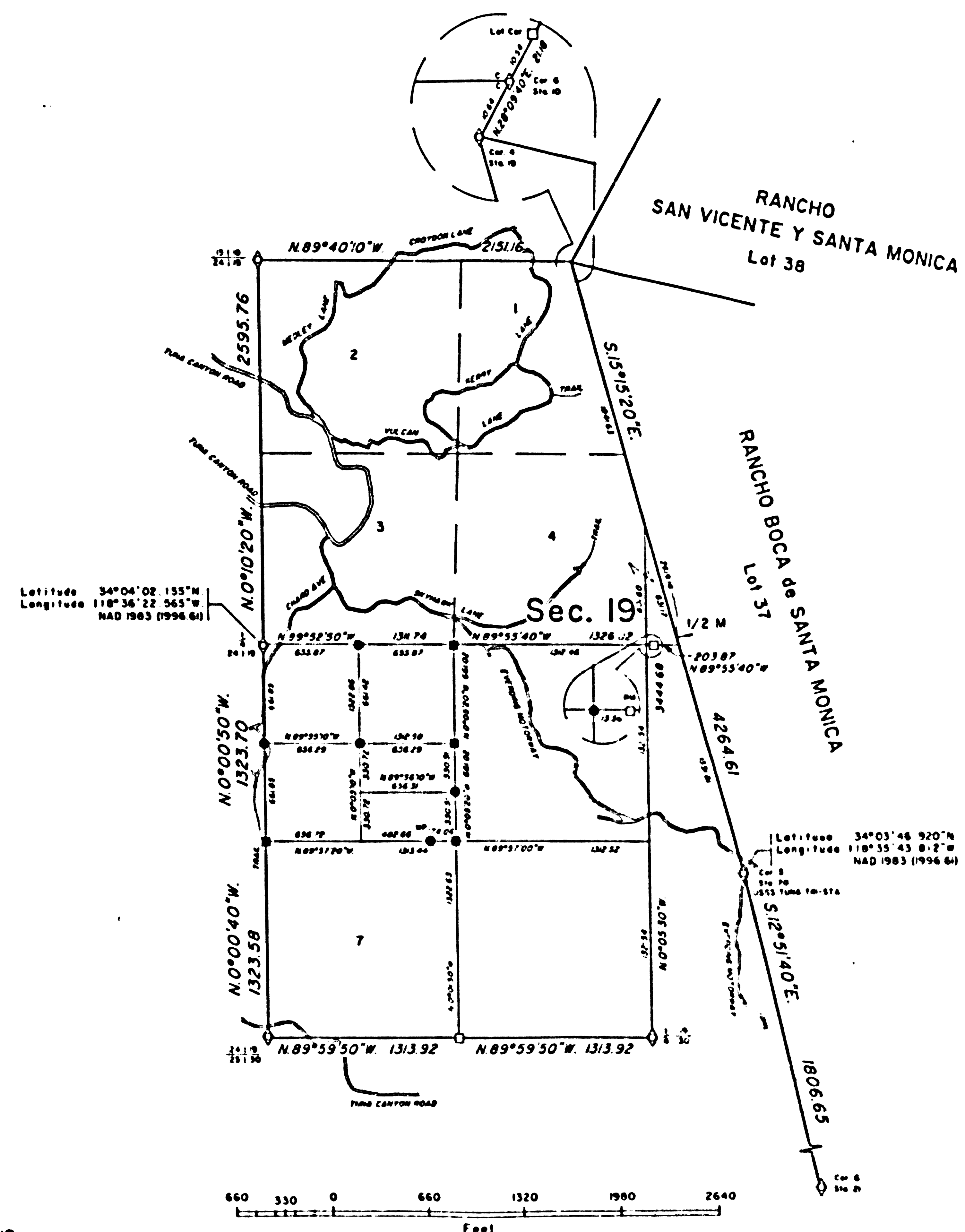
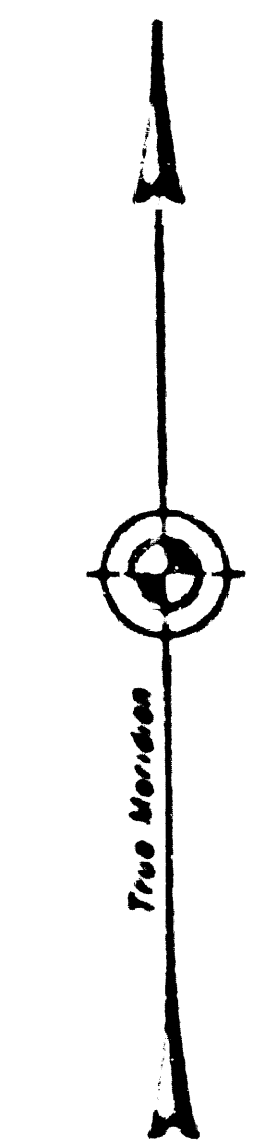
TOWNSHIP 1 SOUTH, RANGE 16 WEST, OF THE SAN BERNARDINO MERIDIAN, CALIFORNIA. ORIGINAL
 DEPENDENT RESURVEY AND SUBDIVISION OF FRACTIONAL SECTION 19

A history of surveys is contained in the field notes.

This plat represents the dependent resurvey of a portion of Rancho Boca de Santa Monica, a portion of the west boundary and a portion of the subdivisional lines, designed to restore the corners in their true original locations according to the best available evidence, and the subdivision of fractional section 19, Township 1 South, Range 16 West, San Bernardino Meridian, California.

Lottings and areas are as shown on the township plat approved June 20, 1896.

Survey was executed by David H. Haller, Cadastral Surveyor, beginning July 18, 1996, and completed July 26, 1996, pursuant to Special Instructions dated July 15, 1996, for Group No. 1247, California.



- LEGEND
- ◇ Original Evidence Recovered; Not Remonumented
 - Local Evidence Recovered; Not Remonumented
 - Local Evidence Recovered; Remonumented
 - Position Determined and Monumented
 - ◇ Original Position Perpetuated by Testimonial Evidence; Not Remonumented

UNITED STATES DEPARTMENT OF THE INTERIOR
 BUREAU OF LAND MANAGEMENT
 Sacramento, California

This plat is strictly conformable to the approved field notes, and the survey, having been correctly executed in accordance with the requirements of law and the regulations of this Bureau, is hereby accepted.

For the Director
 February 4, 1998
David H. Haller
 Chief Cadastral Surveyor - California

F.M. 22048
 IM 129-097

54 040-A

T. 1 S., R. 16 W., S.B.M.