

JOB NUMBER J53201

LOS ANGELES COUNTY
DEPARTMENT OF PUBLIC WORKS
900 SOUTH FREMONT AVENUE
ALHAMBRA, CA. 91803

LARIAC GROUND CONTROL

SURVEY LIMITS UNINCORPORATED TERRITORY & VARIOUS CITIES IN LA COUNTY

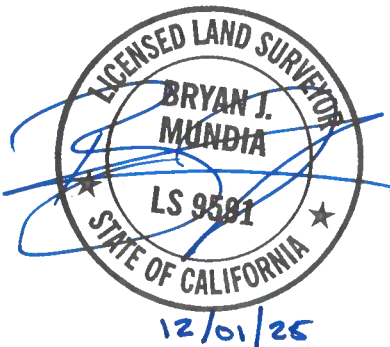
DESCRIPTION OF WORK ESTABLISH GEODETIC COORDINATES, ELEVATIONS
AND AERIAL PANELS AT DESIGNATED LOCATIONS.

ESTABLISHED GEODETIC COORDINATES ARE BASED ON NAD83 (2011), CALIFORNIA
ZONE 5, EPOCH 2025.00 (PER CSRC/CRTN).

REFERENCE DATA

G25-024

OCTOBER & NOVEMBER 2025
H. OTANEZ
G. ALVARADO
M. REYES
M. LIMON



REMARKS POINTS ESTABLISHED BY SINGLE BASELINE SOLUTION FROM CSRC/CRTN STATIONS.
SURVEY DATA WAS MINIMALLY CONSTRAINED AND ADJUSTED BY LEAST SQUARES METHODS.
THE CCS83 COORDINATES AND GEODETIC CONTROL DATA SHOWN HEREIN MEETS OR EXCEEDS
THE 5-CENTIMETER LOCAL AND NETWORK ACCURACY HORIZONTALLY AND THE 1 DECIMETER
LOCAL AND NETWORK ACCURACY VERTICALLY AT 2 SIGMA (95%) AS LISTED IN THE SPATIAL
ACCURACY STANDARDS PUBLISHED BY THE FEDERAL GEOGRAPHIC DATA COMMITTEE (FGDC) IN
PART 2: STANDARDS FOR GEODETIC NETWORKS, FGDC-STD-007.2-1998

