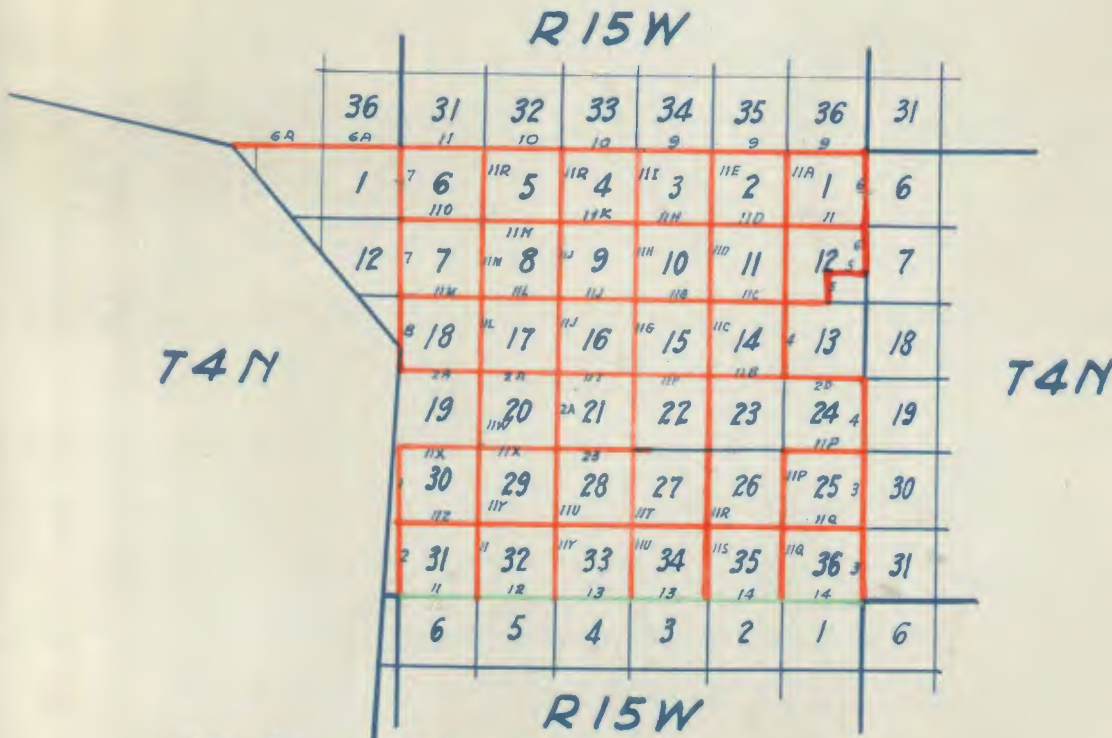


FIELD NOTES OF T 4 N R 15 W S. B. M.

VOL. 163:30
W. H. Norway - 1876
VOL. 163:29
M. G. Wheeler - 1874

Copied and compared from
Notes on file at United States
Cadastral Engr's Office, Glendale
Calif. by A. C. Johnson and
Fred H. Blanchard Sept. 30, 1943.



Wheeler - 1874 ———
Norway - 1876 ———

W. E., T 4 N., R. 15 W., S. E. M.

From the established cor. to Tps. 3 and 4 N., Rs. 15 and 16 W., I run North on a random line bet. Rs. 15 and 16 and on the W. B. of secs. 31 and 30.

Var. $14^{\circ} 10'$ E.

I set temp. $\frac{1}{2}$ and mile posts at every 40 and 80 chs. and at 2 miles 8 chs. and 79 lks. to a point 1.40 chs. E. of the true cor. to secs. 19, 24, 25 and 30.

As this Tp. has had an offset line established by a former survey, I find it practicable to throw the error on the S. E.

Therefore to correct this error, I run

South on a true line bet. secs. 25 and 30.

On corrected Va.

Var. $14^{\circ} 40'$ E.

- 22.00 Cross dry gulch 50 lks. wide course NE. thence along W. side of same over hills.
- 28.00 Summit of spur bearing E & W.
- 40.00 Set a redwood post 3 x 3 in. $3\frac{1}{2}$ ft. long in a mound of rock on steep brushy side hill, facing W. as inst. for $\frac{1}{4}$ sec. cor.
- 48.00 Cross gulch 50 lks. wide course W. and ascend.
- 54.50 Summit of spur bearing E & W. and descend.
- 63.75 Cross a ravine course W. and ascend from same.
- 70.50 Leave ravine thence over table land.
- 80.00 Set an oak post 4 x 4 in. $3\frac{1}{2}$ ft. long in a large mound of rocks on side hill facing W. as inst., for cor. to secs. 30, 31, 25, 36.
Land rolling mostly, 2nd rate with low underbrush.
-

South on a true line bet. secs. 31 and 36.

Var. 14° 40' E.

2.50 Cross a ravine 50 lks. wide course W. and ascend.
9.00 Summit of spur bearing E & W. and descend.
20.00 Cross a ravine course SW and ascend.
21.50 Summit of a small spur bearing E & W. and descend.
30.00 Cross deep gulch course NW. and ascend.
40.00 Set an oak post 3 x 3 in. 3 ft. long in a mound of rocks as inst.
for $\frac{1}{4}$ sec. cor. on summit of spur bearing E & W. .
41.00 Descending.
46.50 Cross ravine course W. and ascend.
55.00 Summit of spur bearing E & W. and descend.
59.00 Cross a ravine and ascend.
64.50 Enter Placentas Valley bearing E. & W.
72.25 Enter dry wash of the Placentas course W.
81.75 Over same course W.
85.50 Cross road bearing E & W.
88.79 The cor. to Tps. 3 and 4 N., Rs. 15 and 16 W.
Land rolling 2nd rate.

Oct. 9, 1876

T 4 N. R 15 W. S.B.M.

As a portion of the offset line through this Tp. as run by Hancock cannot be found, I find it necessary to re-run a portion of it. From the cor. to secs. 18, 19, 13 and 24, on the W.B. of the Tp. as established by Hancock, I run East on a random line bet. secs. 18 and 19.

Var. 14° 40' E.

40.00 Finding no trace of cor. called for in the former survey, I set a post for temp $\frac{1}{4}$ sec. and continue

80.00 Finding no trace of cor. as called for in former survey, I set a post for temp cor. to secs. 17, 18, 19 and 20 and continue E.

East on a random line bet. secs. 17 and 20.

Var. 14° 40' E.

.50 Enter dry wash course NW.

13.00 Over same course NW

40.00 Finding no cor. or cottonwood tree as called for in the former survey, I set a post for temp $\frac{1}{4}$ sec. cor. and continue

78.55 To a point 14 lks. S. of the cor. to secs. 16, 17, 20 and 21, I find the error to be 1.46 chs. Westing which I throw in on the W. side of the Tp. and run the line as follows
S 89° 57' W. on a true line bet. secs. 17 and 20

Var. 14° 40' E.

40.00 Set an oak post 3 x 3 in. 3 $\frac{1}{2}$ ft. long in a mound and pits as per inst. for $\frac{1}{4}$ sec. cor.

80.00 Set an elder post 3 x 3 in. 3 ft. long in a mound of rocks and pits as per inst. for cor. to secs. 17, 18, 19 and 20.

Land level with scattering low brush, 2nd rate soil

S. 89° 57' W. on a true line bet. secs. 18 and 19

Var. 14° 40' E.

40.00 Set an elder post 3 x 3 in. 3 ft. long in mound of rocks as inst. for $\frac{1}{4}$ sec. cor.

78.55 The cor. to secs. 18, 19, 13 and 24
Land level, 1st and 2nd rate
Sandy in river bottom

From the cor. to secs. 16, 17, 20 and 21, I run
South bet. secs. 20 and 21

Var. 14° 40' E.

40.00 Finding no trace of old cor. as called for in former survey, I
set post for temp $\frac{1}{4}$ sec. cor. and continue

58.89 Cross line of S. P. R. R. bearing E & W.

60.00 To dry wash of Santa Clara River course N.W.

62.50 Over same course N.W.

77.80 Cross wagon road bearing E & N.W.

80.00 Finding no trace of cor. as called for in the former survey, I set
post for temp cor. to secs. 20, 21, 28 and 29, and make it a ran-
dom line and run

East on a random line bet. secs. 21 and 28

Var. 14° 40' E.

25.50 Leave valley, ascend low hill, bearing S.W. and N. E.

29.50 Summit and descend.

31.00 Foot of spur, enter valley bearing S.W. & N.E.

35.00 Cross gulch 50 lks. wide course N.

40.00 Finding no trace of old cor. as called for in the former survey,
I set a post for temp $\frac{1}{4}$ sec. cor. and continued

58.00 J. O. Rieleys stable 75 lks. S. & house about 1.00 ch. N.

61.50 Cross pole fence bearing N. & S. Enter field.

78.50 Cross pole fence, leave field bearing N & S.

79.30 Int. 70 lks. S. of old cor. to secs. 21, 22, 27 and 28
I find the old mound with part of old stake. I rebuild said mound, set an elder post 4 x 4 in. $3\frac{1}{2}$ ft. long in said mound as inst. for cor. secs. 21, 22, 27 and 28, and I find the measurement on these 2 miles to be 70 lks. short per mile and the Va. correct.
I therefore run
West on a true line bet. secs. 21 and 28.

Var. $14^{\circ} 40'$ E.

39.65 Set an oak post 3 x 3 in. 3 ft. long in a mound of rocks and pits as inst. for $\frac{1}{4}$ sec. cor.

79.30 Set an elder post 4 x 4 in. $3\frac{1}{2}$ ft. long in mound of rocks and pits on S. side of wagon road as inst. for cor. to secs. 20, 21, 28 and 29.
Land mostly level, 1st rate. No timber.

North on a true line bet. secs. 20 and 21.

Var. $14^{\circ} 40'$ E.

39.65 Set an oak post 3 x 3 in. 3 ft. long in a mound of rocks as inst. for $\frac{1}{4}$ sec. cor.

79.30 The cor. to secs. 16, 17, 20 and 21.
Land level, mostly 2nd rate

Oct. 10, 1876

All traces of the line bet. secs. 13 and 24 have disappeared and to establish the same, I begin at the established cor. to secs. 13, 14, 23 and 24 and run

East on a true line bet. secs. 13 and 24.

Var. $14^{\circ} 40'$ E.

- 5.00 Ascend mountain spur bearing N & S
- 10.50 Over same and enter valley bearing NW & SE thence through valley
- 21.50 Thomas Thompson's house 50 lks. N. of line.
- 40.00 Finding no trace of old cor. as called for in the former survey, I set an oak post 3 x 3 in. 3 ft. long in a mound of rocks and pits as inst. for $\frac{1}{4}$ sec. cor.
- 51.50 Leave valley, enter mountain spur, bearing NW & SE.
- 57.50 Summit of same and descend.
- 65.00 Leave mountain spur and enter valley bearing NE & SW
- 80.00 I find no traces of old cor. as called for in former survey, I set wild cherry post 4 x 4 in. $3\frac{1}{2}$ ft. long in a mound of rocks on E. edge of valley at foot of high mountain, as inst. for cor., to secs. 13, 18, 19 and 24, bet. Rs. 14 and 15 W.
- Land mostly level, 1st rate.
-

E. B. T. 4 N., R 15 W. S.B.M.

In order to establish the line bet. Rs. 14 and 15, I run South on a random line on E.B. of sec. 24, 25, 36 setting temp $\frac{1}{2}$ mile and mile posts at every 40 and 80 chs. and at $238 - \frac{50}{100}$ chs. Intersect the Southern Boundary of the Tp. 1.20 chs. West of the cor. to Tps. 3 and 4 North, from this cor. I run North $0^{\circ} 17'$ West on a true line on E.B. sec. 36.

Var. $14^{\circ} 40'$ E.

Ascending along West slope of ridge.

- 30.00 Descending.
- 35.00 Cross gulch 50 lks. wide course NW.
- 38.50 Set an oak post 3 x 3 in. 3 ft. long in a mound of rocks as inst. on side hill facing SW. for $\frac{1}{4}$ sec. cor.
- 61.00 Summit of spur and descend.
- 69.50 Cross gulch 50 lks. wide course W. and ascend.
- 78.50 Set an oak post 4 x 4 in. $3\frac{1}{2}$ ft. long in a mound of rocks on side hill facing SW. as inst. for cor. to secs. 25, 30, 31 and 36, from which bears a

Live oak 10 in. dia. N. 20° W. 47 lks. dist.

Land rough, 2nd rate, with some scattering live oak in ravine.

Oct. 11, 1876

N. $0^{\circ} 17'$ W. on a true line on E.B. of sec. 25

Var. $14^{\circ} 40'$ E.

Over rough mountain spurs.

- 22.50 Summit of spur bearing E. & W. and descend.
- 40.00 Set a live oak post 3 x 3 in. 3 ft. long in a mound of rocks and pits as inst. on side hill facing N. for $\frac{1}{4}$ sec. cor.
- 43.50 Cross dry gulch 25 lks. wide course W.
- 80.00 Set a redwood post 4 x 4 in. $3\frac{1}{2}$ ft. long in a mound of rocks on steep side hill facing W. as inst. for cor. to secs. 24, 25, 29 and 30, from which a

Redwood tree 6 in. dia. bears S. 20° W. 41 lks. dist.

Land rough and rocky covered with low brush, 3rd rate.

N. $0^{\circ} 17'$ W. on a true line on E. E. of sec. 24.

Var. $14^{\circ} 40'$ E.

- 27.50 Summit of spur bearing E. & W. and descend.
- 40.00 Set a granite rock 10 x 12 x 6 in a mound of rocks on side hill, facing N. as inst. for $\frac{1}{4}$ sec. cor.
- 45.00 Cross small gulch course W. and ascend.
- 63.00 Summit of spur bearing E. & W. and descend.
- 76.00 Enter head of valley bearing NE & W.
- 80.00 The cor. to secs. 13, 24, 18 and 19.
Land rocky along line, 3rd rate with low brush.

Oct. 12, 1876

As the line from the establish $\frac{1}{4}$ sec. cor. on E. E. of sec. 13, is too rough to measure, I begin at the cor. to secs. 13 and 14, 23 and 24, and run

North on a true line bet. secs. 13 and 14.

Var. $14^{\circ} 40'$ E.

- 6.50 Cross wagon road bearing NE & SW.
- 7.00 Cross S. P. R. R. track bearing NE & SW.
- 9.45 Enter dry bed of Santa Clara River course SW.
- 16.00 Over same course SW., thence over brushy bottom.
- 35.00 Cross gulch course SW.
- 40.00 Set an oak post 3 x 3 in. 3 ft. long in mound of rocks as inst. for $\frac{1}{4}$ sec. cor.
- 50.50 To base of high bluff bearing NE & SW.

60.00 Top of bluff thence over high rolling hills.
80.00 Set a granite 20 x 10 x 15 in. in a mound of rocks as inst. for
cor. to secs. 11, 12, 13, 14 on side hill facing E.
Land N. $\frac{1}{2}$ rolling 2nd rate, S. $\frac{1}{2}$ mostly river wash.
Some 1st rate land.

E. on a true line bet. secs. 12 and 13.

Var. $14^{\circ} 40' E.$

Descending.

22.50 Cross dry gulch 50 lks. wide course SW. and ascend.
40.00 Set a granite rock 10 x 12 x 6 in a mound of rocks on side of
abrupt hill facing W. as inst. for $\frac{1}{4}$ sec. cor.
Land rolling, 2nd rate.

Finding it too rough to measure farther E. on this line, I run
North through center of sec. 12.

Var. $14^{\circ} 40' E.$

Along S. slope of ridge.

27.50 Cross dry gulch 25 lks. wide course SW. and ascend.
40.00 Set an oak post 3 x 3 in. 3 ft. long in a mound of rocks as inst.
for $\frac{1}{4}$ sec. cor. in center of sec. 12, from which bears a
Large boulder 20 ft. cube N. $46^{\circ} W.$ 1.05 chs. dist.
From this cor. I run
East on $\frac{1}{4}$ sec. line through sec. 12.

Var. $14^{\circ} 40' E.$

Descending.

7.50 Cross gulch 25 lks. wide course SW. and ascend.

0.00 Set a redwood post 3 x 3 in. 3 ft. long in a mound of rocks on a side hill facing W. as inst. for $\frac{1}{4}$ sec. cor. on E. B. of Tp. bet. Rs. 14. and 15 and E. B. of sec. 12.
Land rough 2nd rate, some grazing. Scattering oak timber in Canada.

North on a range line bet. Rs. 14 and 15 on E. B. of sec. 12.

Var. 14° 40' E.

40.00 Set an oak post 3 x 3 in. 3 ft. long in a mound of rocks on W. slope of gravelly hill as inst. for cor. to secs. 1, 6, 7, 12.
Land rolling 2nd rate.

North on E. B. of sec. 1

Var. 14° 40' E.

Over rolling gravelly hills.

40.00 Set granite rock 6 x 12 x 6 in. in a large mound of rocks as inst. for $\frac{1}{4}$ sec. cor.

49.50 Summit of ridge bearing NW & SE. and descend.

80.00 Set a redwood post 4 x 4 in. 3 $\frac{1}{2}$ ft. long in a mound of rocks on side hill facing N. as inst. for cor. to Tps. 4 and 5 N., Rs. 14 and 15 W.

Land over rolling gravelly hills covered with low brush mostly 3rd rate.

Oct. 13, 1876

T 4 N. R 16 W.

In order to establish the northwest corner of this township, I begin at a post in mound marked S.P. #9 on north boundary of Section 3, T 4 N, R 16 W being 67.32 chains east of the corner to Sections 3, 4, 33, 34 as established in a former survey and

Run thence east on a true line on north boundary of Section 3.

Var. 14° 40' E.

Ascending

8.00 Summit of ridge bearing northeast and southwest and descend steep side hill.

12.68 The point for $\frac{1}{4}$ section corner falling on steep side hill, not a suitable place to build a mound I set a wild cherry post 4" x 4" x 3 $\frac{1}{2}$ ft. long in a mound of rock on top of ridge 4.7 chains west as instructed for witness to corner to Sections 2, 3, 34, 35.

Land rough, third rate.

From the true corner I run east on north boundary of Sec. 2.

Var. 14° 40' E.

Over broken hills.

22.00 Enter canada bearing southwest.

26.00 Cross ravine and canada course southwest.

30.00 Over same.

40.00 Set an oak post 3 x 3 x 3 ft. long in mound of rock on steep brushy side hill facing west as instructed for $\frac{1}{4}$ section corner.

45.00 Summit of spur bearing northeast and southwest and descend.

43.00 Cross gulch 20 links wide, course southwest and ascend
 45.17 Summit of steep spur bearing northeast and southwest, and descend
 70.00 Cross gulch 20 links wide course southwest and ascend.
 80.00 The point falling on steep side hill not a suitable place
 to build a mound, I set an oak post 4" x 4" x 3½ ft. long in
 a large mound of rock, 5.41 chains on top of high ridge bearing
 northeast and southwest as instructed for witness to corner to
 sections 1, 2, 35, 36.

Land rolling, soil second and third rate, brushy and
 gravelly, grazing in canada.

 From the true corner I ran east on north boundary of Sec. 1.
 Var. 14° 40' E.

Ascending.

6.41 Summit of spur bearing northeast and southwest, witness post,
 thence descending.
 30.00 Cross dry gulch course southeast and ascend.
 40.00 The point for ¼ section corner falling on steep side hill,
 not a suitable place to build a mound, I set a cottonwood
 post 3" x 3" x 3 ft. long in a mound of rock 80 links
 east on summit of spur bearing northwest and southeast as
 instructed, for witness to ¼ section corner.
 40.80 Summit of spur and witness post and ascend.
 47.00 Cross gulch 20 links wide course southeast.
 50.00 Enter large canada.
 54.50 Cross dry gulch and canada 50 links wide course south.
 58.50 Ascend. Leave canada, enter high rolling hills.
 73.50 Summit of ridge, bearing north and south and descend.
 80.00 Set a cottonwood post 4" x 4" x 3½ ft. long in a large

mound of earth and pits on side hill facing southeast
as instructed for corner to T 4 and 5 N, R 15 and 16 W.

Land rolling, mostly second rate grazing - part in
canada, first rate soil - scattering oak and wild cherry
timber.

Oct 14, 1876

W. B., T. 4 N., R 15 W., S.E.M.

From the cor. to secs. 18, 19, 13 and 24 bet. Rs. 15 and 16, I run North on a random line on W. B. of secs. 18, 7, 6, setting temp. $\frac{1}{2}$ mile and mile posts at every 40 and 80 chs. and at 237.30 chs. I int. the N. E. of Tp. 50 lks. E. of the cor. to Tps. 4 and 5 N. Rs. 15 and 16 W., from which cor. I run S 7' E. on a true line on W. B. of sec. 6.

Var. $14^{\circ} 40' E.$

Descending along side hill

- 37.30 Set a wild cherry post 3 x 3 in. 3 ft. long in a mound of rocks and pits as inst. for $\frac{1}{4}$ sec. cor.
- 73.80 Leave hill, enter valley bearing NE & SW.
- 77.30 The cor. falling in deep wash, not a suitable place to build a mound. I set a cottonwood post 4 x 4 in. $3\frac{1}{2}$ ft. long in a large mound of rocks 3.50 chs. N. at foot of hill as inst. for witness to cor. to secs. 1, 6, 7 and 12, from which bears a Cottonwood tree 16 in. dia. S. $11\frac{1}{2}^{\circ} W.$ 5.03 chs. dist.
Land rolling 2nd rate, grazing.

S. 7' E. on a true line on W. B. of sec. 7.

Var. $14^{\circ} 40' E.$

- 3.50 Enter wash of canada course SW.
- 11.50 Over same course SW
- 16.50 Cross wagon road bearing NE & SW.
- 31.00 Leave valley enter hills, bearing SW. & SE.
- 40.00 Set an oak post 3 x 3 in. 3 ft. long in a large mound of rocks on top of low spur bearing N. & S. as inst. for $\frac{1}{4}$ sec. cor.
Thence ascending over high hills.
- 80.00 Set a granite rock 12 x 10 x 6 in. in a large mound of rocks on top of high hill as inst. for cor. to secs. 7, 12, 13, 18.

Land mountains, 1st rate. Part in valley 1st rate.

Scattering oak and cottonwood timber.

S. 7' E. on a true line on N. E. of sec. 18.

Var. 14° 40' E

Descending.

- 19.50 Cross head of small gulch course SW. and ascend.
33.00 Summit of low spur bearing NE & SW. and descend.
40.00 Set a wild cherry post 3 x 2 in. 3 ft. long in a mound of rocks
as inst. for $\frac{1}{4}$ sec. cor. on side hill facing S.
41.50 Cross dry gulch 50 lks. wide course SW. and ascend.
51.00 Summit of spur bearing NE & SW and descend.
61.08 Cor. No. 7 of San Francisco Rancho. Post in stone mound at foot of
high bluff on N. bank of dry bed of Santa Clara River, thence cross-
ing River Bed.
69.00 Over same course W.
80.00 The cor. to secs. 18, 19, 13 and 24.
Land high gravelly hills, 3rd rate.

Oct 16, 1876.

N. E. T. 4 N., R 15 W., S.B.M.

From the cor. to Tps. 4 and 5 N., Rs. 15 and 16 W., I run
East on a random line on the N.B. of secs. 6, 5, 4, 3, 2, 1.

Var. 14° 40' E.

Setting temp $\frac{1}{2}$ mile and mile posts at every 40 and 80 chs. and at
5 miles 78.10 chs. to a point 1.56 chs. S. of the cor. to Tps. 4
and 5 N., Rs. 14 and 15 W. Therefore the correction will

be 1.90 chs. W. and 26 lks. N. per mile.

From the cor. to Tps. 4 and 5 N., Rs. 14 and 15 W., 1
S. $89^{\circ} 49'$ W. on a true line on N.B. of sec. 1.

Var. $14^{\circ} 40'$

Ascending.

- 37.50 Summit of spur bearing NW. & SE.
- 40.00 Set a redwood post 3 x 3 in. 3 ft. long in a mound of rocks as inst
for $\frac{1}{4}$ sec. cor., thence over rolling hills.
- 80.00 Set a rock 16 x 12 x 8 ins. in a mound of rocks as inst. for cor.
to secs. 1, 2, 35 and 36.
- Land rolling, 2nd and 3rd rate, gravelly with some good grazing.

S. $89^{\circ} 49'$ W. on a true line on N. B. of sec. 2.

Var. $14^{\circ} 40'$ E.

Along side hill sloping S.

- 40.00 Set an oak post 3 x 3 in. 3 ft. long in a mound of rocks as inst.
for $\frac{1}{4}$ sec. cor.
- 80.00 Set a sand rock 16 x 12 x 6 in a mound of rocks on side hill facing
W. as inst. for cor. to secs. 2, 3, 34 and 35.
- Land rolling hills, 2nd rate, grazing with low brush in places.

Oct. 17, 1876

S. $89^{\circ} 49'$ W. on a true line on N. B. of sec. 3.

Var. $14^{\circ} 40'$ E.

- 35.50 Cross near head of dry gulch 50 lks. wide course SW. and ascend.
- 40.00 Set a redwood post 3 x 3 in. 3 ft. long in a mound of rocks as
inst. for $\frac{1}{4}$ sec. cor.

- 73.00 Summit of ridge bearing NE. & SW. and descend.
- 80.00 Set an oak post 4 x 4 in. 3½ ft. long in a mound of rocks as inst. for cor. to secs. 3, 4, 33 and 34.
Land over high rolling hills, 2nd rate grazing.
-
- S. 89° 49' W. on a true line on N.E. of sec. 4.
Var. 14° 40' E.
- 40.00 The point for ¼ sec. cor. falling on steep hill side not a suitable place to build a mound, I continue and at
- 45.50 Set a oak post 3 x 3 in. 3 ft. long in a mound of rocks as inst. for witness to ¼ sec. cor. on top of high spur bearing NE & SW. and descend.
- 80.00 Set a cottonwood post 4 x 4 in. 3½ ft. long in a mound of rocks as inst. for cor. to secs. 4, 5, 32 and 33.
Land over high gravelly hills, 2nd rate, grazing in places.
-
- S. 89° 49' W. on a true line on N. E. of sec. 5.
Var. 14° 40' E.
- 11.00 Leave hills, enter valley of Canada Las Muertas bearing NE & SW.
- 17.50 Enter dry wash of arroyo.
- 18.50 Over same course SW.
- 24.70 Leave valley and ascend bearing NE & SW.
- 40.00 Set a wild cherry post 3 x 3 in. 3 ft. long in a mound of rocks as inst. for ¼ sec. cor.
- 80.00 Set an oak post 4 x 4 in. 3½ ft. long in a mound of rocks with pits as inst. for cor. to secs. 5, 6, 31 and 32.
Land rough, 2nd rate. Part in valley 1st rate.
-

S. $89^{\circ} 49'$ W. on a true line on N. B. of Sec. 6

Var. $14^{\circ} 40'$ E.

Along S. slope of high ridge.

40.00 Set a redwood post 3 x 3 in. 3 ft. long in a mound of earth with pits as inst. for $\frac{1}{4}$ sec. cor.

52.00 Cross near head of short gulch. Course S. and ascend.

78.10 The cor. to Tps. 4 and 5 N., Rs. 15 and 16 W.

Land rolling 2nd and 3rd rate.

Low underbrush and gravelly.

Oct. 18, 1876

W.H. Norway

From the cor. to Secs. 11, 12, 13 and 14, I run
North bet. Secs. 11 and 12.

Var. $14^{\circ} 40'$ E.

8.00 Summit of spur bearing N.E. and S.W. and descend.

33.50 Cross gulch course S.E. and ascend.

40.00 Set an oak post 3 x 3 in. 3 ft. long in a mound of rocks as inst.
for $\frac{1}{4}$ sec. cor.

80.00 Set a rock 16 x 14 x 10 in. in a mound of rocks on steep side hill
facing S.E. as inst. for cor. to Secs. 1, 2, 11 and 12.
Land rough hills, 2nd rate grazing.

East on random line bet. Secs. 1 and 12.

Var. $14^{\circ} 40'$ E.

Descend over rolling hills.

40.00 Set a post for temp. $\frac{1}{4}$ sec. cor.

49.50 Cross near head of dry gulch course S. W.

90.20

Int. the E. 2. of the 1, 21 lks. N. of the cor. to secs. 1 and 12.
From this cor. I run

N. $89^{\circ} 51'$ W. on a true line bet. secs. 1 and 12.

Var. $14^{\circ} 40'$ E.

40.10

Set an oak post 3 x 3 in. 3 ft. long in a mound of rocks as inst.
for $\frac{1}{4}$ sec. cor.

90.20

The cor. to secs. 1, 2, 11 and 12.

Land rolling, 2nd and 3rd rate.

Oak timber in canadas.

North on a random line bet. secs. 1 and 2.

Var. $14^{\circ} 40'$ E.

18.50

Summit of spur bearing NE and SW thence along same.

29.50

Leave spur and descend.

40.00

Set post for temp $\frac{1}{4}$ sec. cor.

59.00

Cross head of gulch course SW and ascend.

79.70

Int. the N.B. of Tp. 30 lks. W. of the cor. to secs. 1 and 2,
from which cor. I run

South $13'$ W. on a true line bet. secs. 1 and 2.

Var. $14^{\circ} 40'$ E.

39.85

Set an oak post 3 x 3 in. 3 ft. long in a mound of rocks on side
hill facing N. as inst. for $\frac{1}{4}$ sec. cor. from which bears a
scrub oak 10 in. dia. S. 40° E 29 lks. dist.

79.70

The cor. to secs. 1, 2, 11 and 12.

Land rolling hills, 2nd rate.

Oct 19, 1876

From the cor. betwe. secs. 23, 26 and 27 I run
North bet. secs. 23 and 23.

Var. 14° 40' E.

- 20.00 Summit of spur covered with low brush, bearing NW and SE and descend.
30.00 Enter valley of Santa Clara bearing NW and SE.
35.40 Cross fence and road bearing N 67° E. and S. 67° W.
40.00 Set an oak post 3 x 3 in. 3 ft. long in a mound of rocks in sandy
bottom of river wash near a clump of willows as inst. for $\frac{1}{4}$ sec.
cor. from which the S. cor. of a house brs. N 69° E. about 10.00
chs. dist.
45.00 Enter dry wash of Santa Clara River course W.
52.00 Over same, course W.
55.37 S. P. R. R. bearing NE & SW.
60.00 Leave valley and ascend bearing NE & SW.
80.00 Set a rock 16 x 12 x 8 in a large mound of rocks as inst. for cor.
to secs. 14, 15, 22 and 23.

East on a random line bet. secs. 14 and 23.

Var. 14° 40' E.

Descending.

- 12.00 Leave hills, enter valley.
33.00 Leave valley and ascend foot of hill.
40.00 Set post for temp. $\frac{1}{4}$ sec. cor.
48.00 Leave hill, enter valley of the Santa Clara bearing NE & SW.
56.00 Dry bed of Santa Clara river course SW.
60.00 Over same.
70.00 S. P. R. R. bearing NE and SW.

- 79.72 Int. the N & S line 21 lks. S. of cor. to Secs. 13, 14, 23 and 24, from this cor. I run S. $89^{\circ} 51' W.$ on a true line bet. secs. 14 and 23. Var. $14^{\circ} 40' E.$
- 39.86 Set a willow post 3 x 3 in. 3 ft. long in a large mound of rocks on SW slope of a low brushy ridge as inst. for $\frac{1}{4}$ sec. cor.
- 79.72 The cor. to secs. 14, 15, 22 and 23. Land mostly 2nd rate. Valley very sandy.
-
- North bet. secs. 14 and 15. Var. $14^{\circ} 40' E.$
- Ascending.
- 7.50 Summit of ridge bearing NE & SW and descend.
- 36.50 Cross near head of gulch course SW and ascend.
- 40.00 Set a granite rock 16 x 12 x 10 in. in a mound of rocks on side hill facing W. as inst. for $\frac{1}{4}$ sec. cor.
- 80.00 Set an oak post 4 x 4 in. 3 $\frac{1}{2}$ ft. long in a mound of rocks as inst. for cor. to secs. 10, 11, 14 and 15, from which bears a large boulder 10 ft. cube N. $29^{\circ} E.$ 1.07 chs. dist. Land over high gravelly hills with some good grass in places
-
- E. on random line between Secs. 11 and 14. Var. $14^{\circ} 40' E.$
- Ascending.
- 40.00 Set a post for temp $\frac{1}{4}$ sec. cor. on top of high ridge, thence along same.
- 43.50 Descend ridge bearing NW & SE.
- 80.00 Int. the N & S line 12 lks. S. of cor. to secs. 11, 12, 13 and 14,

from which cor. I run

S. $89^{\circ} 55'$ W. on a true line bet. cor. 10 and 11.

Var. $14^{\circ} 40'$ E.

40.00 Set a redwood post 3 x 3 in. 3 ft. long in a mound of rocks and pits as per inst. for $\frac{1}{4}$ sec. cor. on top of ridge.

80.00 The cor. to secs. 10, 11, 10 and 11.

Land over high ridge 2nd and 3rd rate grazing.

North bet. secs. 10 and 11.

Var. $14^{\circ} 40'$ E.

38.00 Summit of ridge bearing NE & SW. Descend.

40.00 The point for $\frac{1}{4}$ sec. cor. falling on steep side hill, not a suitable place to build a mound, I set an oak post 3 x 3 in. 3 ft. long in a mound of rocks 2.00 chs. S. on top of ridge as inst. for witness to $\frac{1}{4}$ sec. cor., thence along W. slope of ridge.

46.50 Summit of same ridge, thence along same.

80.00 Set an oak post 4 x 4 in. 3 $\frac{1}{2}$ ft. long in a mound of rocks and pits on top of ridge as inst. for cor. to secs. 2, 3, 10 and 11.

Land over high mountain covered with low brush, soil gravelly 2nd and 3rd rate.

East on a random line bet. secs. 2 and 11.

Var. $14^{\circ} 40'$ E.

4.50 Leave ridge and descend bearing N & S.

40.00 Set a post for temp $\frac{1}{4}$ sec. cor.

54.00 Cross deep gulch 50 lks. wide course SE and ascend.

79.84 Int. the N & S line 12 lks. N. of cor. to secs. 1, 2, 11 and 12.