

FIELD NOTES

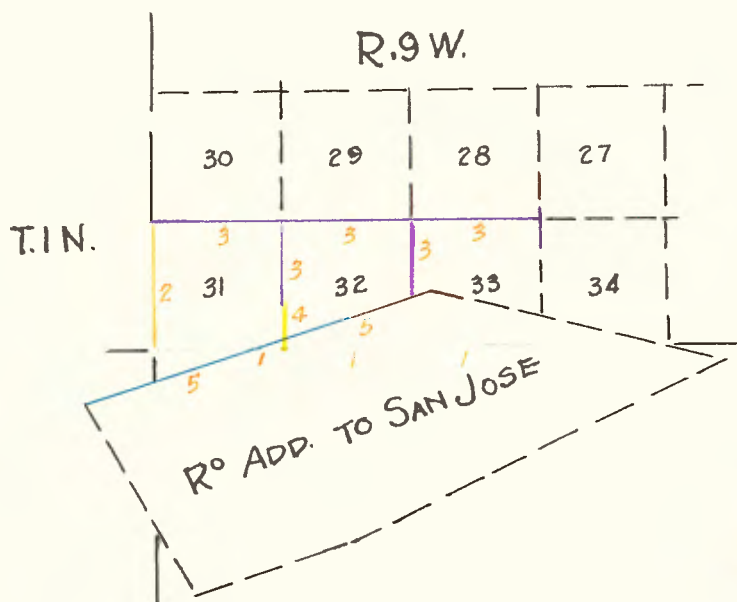
T. 1 N., R. 9 W., S.B.M.

Sections 31 & 32

Sta. 3 to 4 of Ho. Add. to San Jose

(Certified)

Copied from Notes loaned by Mr. I. Friel.



Washington 1852
Gray 1852
Hancock 1865
Wheeler 1874
Minto 1882

San Bernardino Base Line.

South Boundary of T. 1 N., R. 9 W.

West 4th mile on S. boundary of T. 1 N., R. 9 W.

- 80.00 Charred willow stake and charred pine post in a mound of earth, corner to Secs. 32 and 33. T. 1 N., R. 9 W., Secs. 4 and 5, T. 1 S., R. 9 W. from which center of 4 pits bear N. 45° E. 11 lks. S. 45° W. 11 lks. N. 45° W. 11 lks. S. 45° E. 11 lks. Planted 4 Olive seed. On the 1st 54.50 chs. 1st. 31 chs. is low, rocky, brushy, scattering sycamore and oak, overflows 3 or 4 feet much cut by gullies. Poor 3rd. Residue high 2nd., rolling prairie some scattering oak and last 25 chs. 50 lks. very hilly, stony surface mostly prairie.
Dec. 17, 1852.

West 5th. mile on S. boundary of T. 1 N., R. 9 W.

- 29.45 To scrub oak tree 4 ins. dia.
40.00 Charred willow stake and charred pine $\frac{1}{4}$ section post in a mound of earth, from which the center of 4 pits bear N. 10 lks. S. 10 lks. E. 10 lks. W. 10 lks. Planted 4 olive seed.
50.00 Charred willow stake and charred pine post in a mound of earth corner to secs. 31 and 32, T. 1 N., R. 9 W., Secs. 5 and 6, T. 1 S., R. 9 W. from which the center of 4 pits bear N. 45° E. S. 45° W. N. 45° W. S. 45° E. (11 lks. each). Surface too rocky and brushy for seed. Last mile very broken, high hill, some open prairie, but mostly low scrub, surface rocky most of the mile. Soil 2nd and 3rd high land but mostly poor scrub, no timber.

West 6th mile on S. boundary of T. 1 N., R. 9 W.

- 36.00 Leave broken hills, bearing NE and S. 65° W. to valley. Timbered brushy land.
40.00 Set charred sycamore $\frac{1}{4}$ section post, from which bears a
Sycamore 9 ins. dia. N. 88°30' E. 203 lks.
Sycamore 7 ins. dia. S. 89°45' W. 394 lks.
50.50 Crossed dry ravine 50 lks. wide, course SW.
50.00 Set charred oak stake and charred pine post, SW 1 T. 1 N., R. 9 W. from which bears
Sycamore S. 89°45' E. 238 lks. 9 ins. dia. T. 1 S., R. 9 W. S. 6
Sycamore S. 34° W. 400 lks. 14 ins. dia. T. 1 S., R. 10 W. S. 1
Sycamore N. 89°30' E. 213 lks. 8 in. dia. T. 1 N., R. 9 W. S. 31
Sycamore N. 89° W. 10.40 lks. 12 in. dia. T. 1 N., R. 10 W. S. 36.
First 36 chs. broken surface, being very hilly wild sage etc. bushes, no timber, 3rd rate land, partly 2nd. Residue level. Scattering timber of sycamore and oak, bushy with heavy growth of prickly pear in place.
NOTE: The high hills noted on the 4th 5th and 6th miles on S. boundary of T. 1 N., R. 9 W. do not extend to the coast range of mountains, but are surrounded by a large valley. Ascertained the variation of the needle at a point about 120 chs. N.W. from the S.E. of T. 1 N., R. 10 W. on the night of 19th December 1852.
Found to be as near as may be 13°45' E.

Dec. 19, 1852.

Surveyed by H. Washington, Deputy Surveyor.
Contract dated October 4, 1852.

R. 9 W. Fractional T. 1 N., Station Zero being intersection of Range Line 9 and 10 with base line west of San Bernardino Meridian.

North 80.75 Township cor. post without mound. 79 chs. to dry water course and gully.

$\frac{1}{4}$ sec. mound of earth, post and charred stake.

North 79.25 1st mile station fall in gully and mound erected of earth and charred stake 75 lks. due north of true cor. from mound of No. 1, long leaf oak 18 in. dia. bears N. 64°40' E. distant 1 c & $\frac{1}{4}$ lks.

$\frac{1}{4}$ sec. cor. mound erected at true point of earth, post and charred stake 15 chs. in thick brushwood.

$\frac{1}{4}$ sec. mound in open plain.

Surveyed by A. B. Gray, Deputy Surveyor.

Contract dated October 17, 1852.

From corner to sections 27, 28, 33 and 34, I run
West between sections 28 and 33. Var. 14° east

50 00 Set post corner to sections 28, 29, 32 and 33, drove charred stake
and raised mound with pits as per instructions.
Land undulating. Soil 2nd rate. Timber oak.

SOUTH between sections 32 and 33

Var. 14° E.

40 00 Set a granite rock 15x8x6 ins. for $\frac{1}{4}$ section corner as per in-
structions.

49 00 Intersect N. boundary of Rancho "Addition to San Jose" 146 chs. E.
of the NW corner of same and set a granite rock 14x12x3 as per
instructions. Land rolling.

From corner to sections 28, 29, 32 and 33, I run

WEST between sections 29 and 32.

Var. 14° E.

40 00 Set a brown granite rock 14x10x8 for $\frac{1}{4}$ section corner.

50 00 Cross road course NW.

58 00 Cross road course S. 65° W.

60 00 Set post and charred stake in mound with pits as per instructions
for corner to sections 29, 30, 31 and 32.

Land undulating. Soil 2nd rate. Timber, scattering oak.

SOUTH between sections 31 and 32.

Var. 14° E.

17 00 Cross road, course E.

40 00 Set a granite rock 14x18x8 for $\frac{1}{4}$ section corner as per instructions.

To a point on N. boundary Rancho "Addition to San Jose" 66 chs. E.

49 00 of the NW corner of same and set a granite rock 15x8x6 ins. as
per instructions.

From corner to sections 29, 30, 31 and 32, I run

WEST on random between sections 30 and 31.

Var. 14° E.

40 00 Set temporary $\frac{1}{4}$ section post.

80 90 Intersect west boundary of township at corner to sections 30 and 31
from which I run

EAST on a true line between sections 30 and 31. Var. 14° E.

40 90 Set $\frac{1}{4}$ section post and charred stake in mound with pits as per
instructions.

80 90 To corner to sections 29, 30, 31 and 32.

Land sloping south. Soil 2nd rate.

Timber scattering sycamore and oak.

Surveyed by Henry Hancock, Deputy Surveyor.

Contract dated March 7, 1865.

From the $\frac{1}{4}$ section corner between sections 31 and 32.

Var. 13° 30' E.

SOUTH between sections 31 and 32.

21 00
27 60
36 40

Ascend to low hills, course E. and W.

A black oak 12 in. dia. on line.

Intersect the line of Rancho Addition San Jose.

Deposited a charred stake and planted a granite 24x12x4 15 ins. deep and raised a stone mound for the corner of fractional secs. 31 and 32 on the N. face of a low hill.

Land, the northern 21 chs. is gravelly flat, washed by the flood from Dalton Canyon. The balance is a brushy hillside, 2nd and 3rd rate. Timber scattering black oak.

Oct. 7, 1874.

Surveyed by M. G. Wheeler, Deputy Surveyor.

Contract dated Sept. 4, 1874.

Survey made with a solar compass manufactured by John Hoach of San Francisco in good order and adjustment. I begin at the black oak 20 in. dia. marked A S J 4, Station No. 4 of the survey of the Rancho Addition to San Jose made by M. G. Wheeler Deputy Surveyor in October 1874. From which bears a

Black oak 10 ins. dia. S. 8° E. 60 lks. dist. marked A. S. J. 4 BT.

Black oak 26 ins. dia. N. 2° W. 70 lks. dist. Latitude by observation 34° 06'. Thence

S. 64½° W. on a random line. Var. 14° 15' E.

At 230.45 chs. to a point 400 lks. S. 25½° E. from the post 4 ins. dia. marked A. S. J. 3, in a mound of earth and stone 24 ins. high from which bears an

Oak 11 in. dia. S. 88½° W. 122 lks. dist. Marked A S J 3 BT

A sycamore stump north 27° E. 258 lks. dist.

The true course of this line is therefore north 65½° east and from Station 3 I run

N. 65½° east on true line (T. 1 S., R. 10 W.) Var. 14° 15' E.

- 6 90 Road course NE and SW.
41 39 A stake in a stone mound.
45 08 A post 3x½ in. in mound 18 in. high, with pits 28x15x12 ins. on N. and on the grant line on the line between Ranges 9 and 10 W. 23.30 chs. S. of the corner to said Ranges on the San Bernardino Base Line which corner is a post, from which bears a Sycamore tree 15 in. dia. S. 33° W. 399 lks. dist. and those sycamore stumps as described in the notes from the office of the Surveyor General.
- 82 00 Ascend broken hills.
103.08 Intersect the San Bernardino Base Line 52.86 chains E. of the corner to Ranges 9 and 10 W. at a post marked A S J and S 6 and S 31 in a earth mound with pits.
- 133 22 Intersect line between sections 31 and 32, 11.98 lks. N. of corner to secs. 5, 6, 31 and 32, stone 14x7x6 in. and set a susac post 48x3x3 ins. marked T. 1 N., R. 9 W. S. 32 on NE S 31 on NW and A S J on SE 12 ins. deep made a stone mound 18 ins. high around post on a spur sloping W.
- 175 00 Ravine, course NW.
Spencer's house bears N. 25° W. 6.20 chs. dist.
- 195 50 Spur, course W. descend.
202 50 Foot of mountain bears E. and W.
218 05 Road, course E and W.
221 08 Intersect line between sections 32 and 33, 32, 88 chs. S. of corner to secs. 28, 29, 32 and 33, a post in mound with pits and set a granite stone 15x7x6 ins. marked A S J on S face, 10 in. deep for corner to fractional secs. 32 and 33, made mound 18 ins. high with pits 24x15x12 ins. N. and on grant line 10 lks. dist.
- 221 88 Road course NW and SE.
230 48 To black oak station A S J 4.

Oct. 20, 1882.

Surveyed by Wm. Kinto, Deputy Surveyor.
Under his contract dated October 17, 1882.