

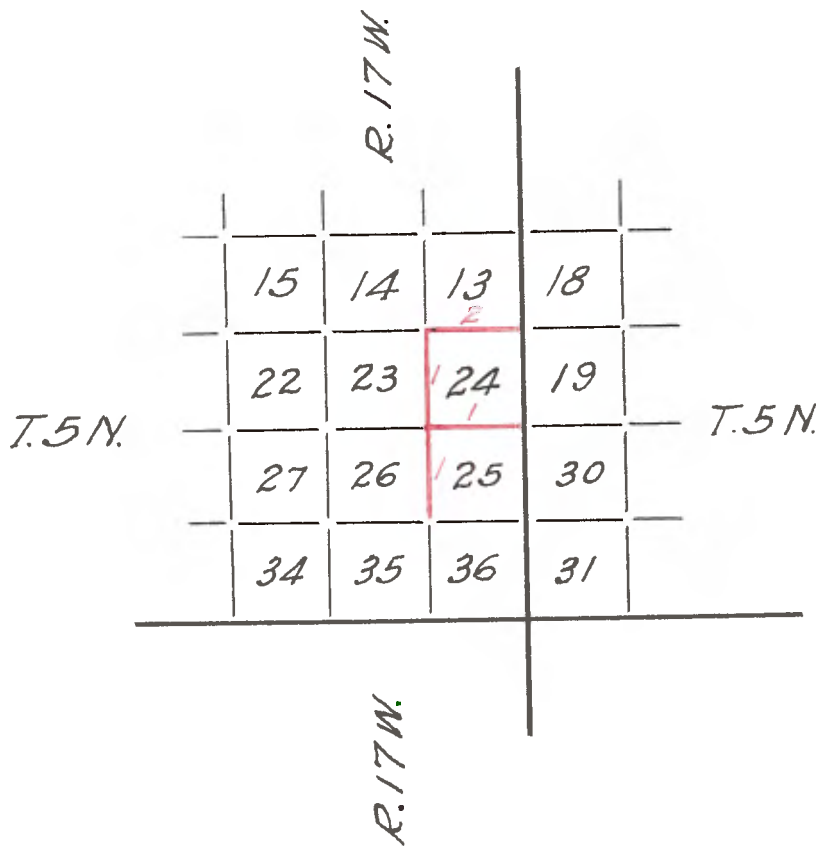
FIELD NOTES

T. 5 N., R. 17 W.

SOUTH, NORTH & WEST BOUNDARIES

Sections 24 & 25

Copied from Notes loaned by Mr.L.Friel



T. 5 N., R. 17 W.

NORTH between sections 25 and 26. Var. 14° 25' E.

80 00 Set post 4 ins. sq. 1 ft. in earth, 1 ft. above earth mound  
4 1/2 ft. dia. at base by 2 ft. in height and dug pits 24x15x12,  
8 lks. dist. at 4 angles for corner to sections 23, 24, 25  
and 26.  
Land mountainous except in valley. Soil 1st rate.  
Timber and undergrowth of oak and wild cherry.

-----

EAST on a RANDOM line between sections 24 and 25. Var. 14° 25' E.

18 50 Cross wash 150 lks. wide, course SE.  
31 50 Cross road, bears N. & S.  
40 00 Set temporary 1/4 section corner.  
53 50 Enter wash of Castas.  
73.50 Leave wash, bears SW. & NW. and ascend.  
79 50 Top of high table land, bears NE. & SW. and descend.  
80 10 Intersect east boundary of Tp. 12 lks. S. of corner to sections  
24 and 25, from which corner I run

S. 89° 55' W. on a TRUE line between sections 24 and 25. Var. 14° 25' E.

40 05 Set post 4 ins. dia. 1 ft. in earth, 1 ft. above earth mound  
4 ft. dia. at base by 2 ft. in height and dug pit 24x15x12,  
8 lks. N. for 1/4 section corner, from which bears the  
House of E. Lepin, S. about 50 chs. dist.  
80 10 The corner to sections 23, 24, 25 and 26.  
Land mostly level. Soil 1st rate.  
Timber and undergrowth of oak, sycamore and wild cherry.

-----

NORTH between sections 23 and 24. Var. 14° 25' E.

Descend.  
35 00 Enter wash, bears NW. & SE.  
40 00 The point for 1/4 sec. cor. falls in wash, course SE. not a  
suitable place to build mound.  
40 50 Leave wash and ascend steep hill.  
41 00 Set post 4 ins. dia. 1 ft. in earth, 1 ft. above stone mound 4  
ft. dia. at base by 2 ft. high on side hill facing S. for wit-  
ness to 1/4 sec. cor.  
47 50 Top of hill, bears E. & W. cross low sag and ascend.  
60 00 Top of ridge, bears NW. & SE. and descend.  
79 00 Cross ravine 20 lks. wide, course E. and ascend.  
80 00 Set post 4 ins. sq. 1 ft. in earth, 1 ft. above stone mound  
4 1/2 ft. dia. at base by 2 ft. in height for cor. to secs. 13,  
14, 23 and 24.  
Land mountainous. Soil 1st rate.  
Timber and undergrowth of oak, elder and wild cherry.

-----

EAST on a RANDOM line bet. secs. 13 and 24. Var. 14° 25' E.

Ascend.  
21 50 Summit of ridge bears NW. & SE. and descend.  
36 50 A valley bears NW. & SE.  
40 00 Set temporary 1/4 section corner.  
49 50 Cross Baranca 100 lks. wide, course SE.  
66 00 Enter wash of Castaque bears N. & S.  
68 00 Leave same brs. N. & S.

50 00 Intersect E. bdy. of Tp. at cor. to secs. 13 & 24, from which  
cor. I run  
W&E On a TRUE line bet. secs. 13 and 24. Var. 14° 25' E.  
40.00 Set post 4 ins. dia. 1 ft. in earth, 1 ft. above earth mound  
4 ft. dia. at base by 2 ft. high, dug pit 24 x 18 x 12, 8 lks.  
N. for  $\frac{1}{4}$  sec. cor.  
50 00 The corner to sections 13, 14, 23 and 24.  
Land mountainous except in valley. Soil 1st rate.  
Timber and undergrowth of oak, elder and wild cherry.

By Geo. S. Collins, Deputy Surveyor,  
Contract Oct. 21, 1879.