

FIELD NOTES

S. B., T. 1 N., R. 18 W.

(E. B., T. 1 N., R. 18 W.
(Sections 1, 24, 25 & 36 only)

and

Between Sections (13 & 24 part
(24 & 25 part
(25 & 36
(25 & 26 part
(26 & 35 part
(34 & 35 part
(35 & 36
(31 & 32 part

Also

T. 1 S., R. 18 W.

Between Sections (2 & 3
(3 & 4
(4 & 5
(3 & 10
(4 & 9

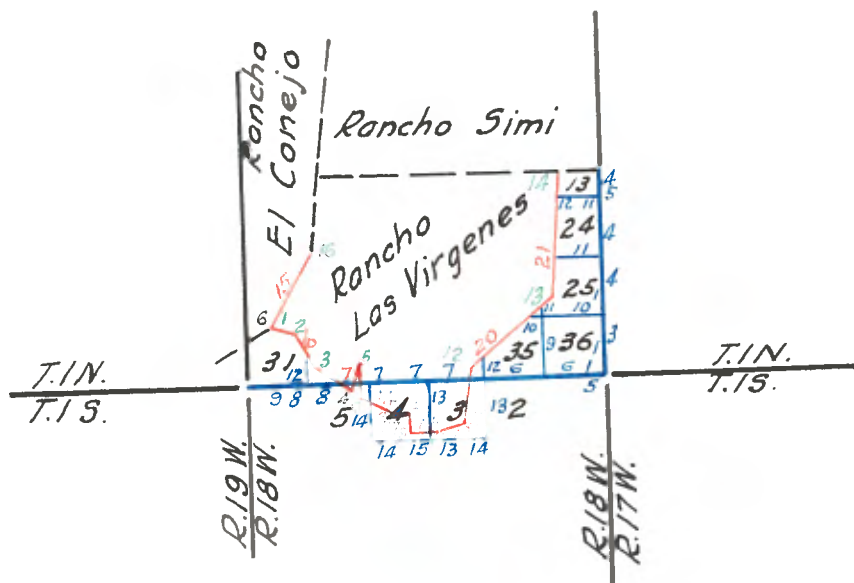
Also

RESURVEY OF RANCHO LAS VIRGENES

in

TOWNSHIPS 1 N. & 1 S., R. 18 W.

(Copied from Notes loaned by Mr. L. Friel)



Lines North of S. B. Base Line
T. 1 N., R. 17 W.

S. 40° W. 2nd Mile

- 16 11 Set charred Oak Stake and charred Oak post in a mound of earth to Secs. 25, T. 1 N., R. 18 W., 30, T. 1 N., R. 17 W., from which the centers of 4 pits br. N. 10 lks. S. 10 lks. E. 10 lks. W. 10 lks., being 112 chs. 63 lks., 1 mile 32 chs. 63 lks. N. of the San Bernardino Base Line. From the last post, ran on the Range line SOUTH bet. Ranges 17 & 18, with
- Var. 13° 30' E.
- 8 00 From level prairie to steep hills, course SE.
31 50 To small prairie valley.
32 63 Set charred stake, and Oak post in a mound of earth, cor. to secs. 25 & 36, T. 1 N., R. 18 W., secs. 30 & 31, T. 1 N., R. 17 W., from which the center of 4 pits br. NE. 11 lks. NW. 11 lks. SE. 11 lks. SW. 11 lks. Post oak S. 18° E. 107 lks. T. 1 N., R. 17 W., sec. 31, 21" dia., no other bearing tree convenient.
Last 32 - 63 chs. (run measured and marked) is mostly hilly, prairie, partly brushy, 2nd rate upland, continued S. on R. line.
- .20 SOUTH on Range line bet. Rs. 17 & 18, Secs. 31 & 36.
40 00 From valley to hills.
Set $\frac{1}{4}$ sec. post, from which bears
Post oak N. 12° E. 189 lks. 17" dia.
Post oak S. 66° W. 283 lks. 24" dia.
- 43 50 To valley.
48 00 Cross gully 30 lks. wide, course SE.
61 50 Cross valley to hilly prairie, from which
Mexican Rancho brs. E. 6 chs.
- 72 00 Another Mexican Rancho brs. E. 15 chs., names not known.
80 00 To San Bernardino Base Line, set post cor. to Sec. 31, T. 1 N., R. 17 W., Sec. 36, T. 1 N., R. 18 W., Sec. 6, T. 1 S., R. 17 W., Sec. 1, T. 1 S., R. 18 W., from which bears
Post oak N. 2° E. 163 lks. 14" dia.
T. 1 N., R. 17 W., Sec. 31
Post oak S. 65 $\frac{1}{2}$ ° E. 313 lks. 20" dia.
T. 1 S., R. 17 W., Sec. 6
Post oak N. 74° W. 53 lks. 20" dia.
T. 1 N., R. 18 W., Sec. 36.
Post oak S. 64° W., 182 lks. 22" dia.
T. 1 S., R. 18 W., Sec. 1
- Last mile open prairie chiefly and hilly and wavy, chiefly hilly, 2nd rate up land, partly level.
- Thence with Variation of Needle 13° 30' E.
Ran EAST 1st mile on S. B. of T. 1 N., R. 17 W.
-
- Returned to the cor. on the San Bernardino Base Line, to Ranges 17 & 18 and run that Base Line with
- Var. 13° 30' E.
- West through prairie hills.
- 1st mile on S. B. of T. 1 N., R. 18 W.
- 8 50 Set post from which bears
Red oak S. 80° W. 31 lks. 11" dia. $\frac{X}{=}$
Red oak N. 4° W. 56 lks. 6" dia. $\frac{X}{=}$
Last 8 50 chs. 2nd rolling prairie.

NOTE: Find it impracticable to continue the line further W. than

13 50 8 chs. 50 lks. with the required degree of accuracy, the high rugged hills commencing at that point, returned on the line 100 lks. W. of cor. to Rs. 17 & 18 and ran due South about 100 lks. West of Sulphur branch, course S.

Thence due WEST, T. 1 S., R. 18 W. over hills.

27 00 To small valley.

31 80 Stake W. of Range line bet. 17 & 18.

Thence due NORTH through valley, level prairie.

9 00 To hills.

13 50 To San Bernardino Base Line

Thence due WEST, continued the San Bernardino Base Line

31 80

8 20 8 20

40 00 Making 40 chs. on the San Bernardino Base West of the cor. to Rs. 17 & 18 at which set $\frac{1}{4}$ sec.

40 00 $\frac{1}{4}$ S. Post, from which bears

Post oak S. 77° W. 50 lks. 20" dia.

Red oak N. $23^{\circ} 30'$ W. 20 lks. 8" dia.

41 00 From hills to valley.

42 50 To deep ravine dry, 70 lks. wide, course S.

45 00 Cross another deep ravine, dry, 40 lks. wide, course S. 30° E.

48 00 Cross valley, course S. 30° E. for about 80 chs. and N. 30° W. for about 30 chs. then nearly North for about 60 chs.

53 24 W. of SE. cor. of T. 1 N., R. 18 W.

A Red oak tree on S. side of steep hill 22" dia. marked with a

X and T. 1 S., R. 18 W., S. 1, T. 1 N., R. 18 W. S. 36,

from which bears two Red oaks S. 79° E. 162 lks. T. 1 S., R. 18 W. S. 1, 33" dia.

N. 80° E. 8 lks. T. 1 N., R. 18 W. S. 36, 15" dia.

Land 53-24 chs., variable level, wavy and very broken, 2nd and 3rd rate, mostly prairie, skirted with sand on the high hills.

Compelled to discontinue the Base Line to the West, owing to abrupt rocky and scrub hills.

H. Washington,

Vol. 163-1

Contract, Oct. 4, 1852.

SAN BERNARDINO BASE LINE, along

S. E., T. 1 N., R. 17 W., S. E. M.

From the cor. to Tps. 1 N., & 1 S., Rs. 17 & 18 W., which is nearly obliterated, and the post lying on the ground and the bearing trees decayed and to remark which I set a post $4\frac{1}{2}$ ft. long, $4\frac{1}{2}$ in. sq. with marked stone 12 in. in the ground, marked T. 1 N., S. 31 on NE., R. 17 W., S. 6 on SE., T. 1 S., S. 1 on SW. and R. 18 W., S. 36 on NW. faces with 6 notches on each edge, and raised a stone mound around post, from which bears the following old trees, which I remark

An oak 20 in. dia. N. 74° W. 43 lks. dist. marked

T. 1 N., R. 18 W., Sec. 36 B. T.

An old stump S. $65\frac{1}{2}^{\circ}$ E. 313 lks. dist., re-marked

T. 1 S., R. 17 W., Sec. 6 B. T.

With no other trees within limits, I took the latitude and found it to be $34^{\circ} 07'$ N.

Sept. 23, 1895

J. R. Glover.

Vol. 125-5

RESURVEY OF PORTION OF

S. E., T. 1 N., R. 17 W., S. E. M.

From the cor. to Tps. 1 N., Rs. 17 & 18 W., on San Bernardino Base Line, previously rebuilt by me, I run NORTH on a random line bet. secs. 31 & 36. Var. $14^{\circ} 30'$ E.

40 00 After diligent search, failing to find old $\frac{1}{4}$ sec. cor. I set temp. $\frac{1}{4}$ sec. cor. and continue North.

80 00 To old cor. to secs. 25, 30, 31 & 36, which is a sandstone set firmly in the ground, marked with 1 notch on S. and 5 on N. edges, with pits in each sec. $5\frac{1}{2}$ feet dist. which I re-dig and an earth and stone mound alongside, which I rebuilt; from which bears

A White Oak 18" dia. S. 18° E. 107 lks. dist. which I remarked T 1 N, R 17 W. S. 31 B. T. Thence I run SOUTH on a true line bet. secs. 31 & 36.

Var. $14^{\circ} 30'$ E.

Ascend.

4 75 Top of spur brs. E. & W. and descend.

10 02 Cross gulch 4 lks. wide course E. and ascend.

18 00 Top of spur brs. E. & W. and descend.

40 00 Set a post 3 ft. long 3 in. sq. 24 in. in the ground for $\frac{1}{4}$ sec. cor. marked $\frac{1}{4}$ S. on W. face; from which bears

A White Oak 24 in. dia. N. $12\frac{1}{2}^{\circ}$ E. 202 lks. dist. marked $\frac{1}{4}$ S. B. T.

A White Oak 36 in. dia. S. $82\frac{3}{4}^{\circ}$ W. 202 lks. dist. marked $\frac{1}{4}$ S. B. T.

47 57 Cross gulch 5 lks. wide course SE. and ascend.

53 00 A house bears W. 80 lks. dist.

60 20 Cross road brs. E. & W.

74 50 A house brs. S. $8^{\circ} 50'$ E. 190 lks. dist.

75 00 A house brs. S. 80° W. 200 lks. dist.

80 00 The cor. to Tps. 1 N., & 1 S., Rs. 17 & 18 W.

Land broken. Soil 2nd and 3rd rate.

Scattering oak timber and dense undergrowth of chaparral.

October 4, 1895.

NORTH bet. secs. 25 & 30.

Var. 14° 30' E.

Descend.
 8 20 Cross gulch 20 lks. wide course E. and ascend.
 9 00 A house brs. W. 260 lks. dist.
 18 00 Top of spur brs. E. & W. and descend.
 19 60 Cross wire fence brs. E. & W.
 24 00 Enter grain field in valley brs. E. & W.
 27 10 Cross wire fence and leave grain field brs. NW. & SE.
 27 52 Cross ravine 4 lks. wide course SE.
 32 63 After diligent search, failing to find old W.O. I continue North.
 39 90 Cross wire fence brs. E. & W.
 40 00 Set a post 3 ft. long 3 in. sq. with marked stone 12 in. in the ground for $\frac{1}{4}$ sec. cor., marked $\frac{1}{4}$ S. on W. face and raised a stone mound around post. Pits impracticable.
 40 40 Cross Ventura and Los Angeles road, brs. E. & W.
 40 76 Cross fence brs. E. & W.
 42 00 Mr. Dice's house, which is also the Dice Post Office, brs. 6 lks. E.
 57 00 Cross wash, 10 lks. wide, course SE.
 58 20 Cross wire fence brs. E. & W.
 75 00 Cross road brs. N. 65° W. and S. 65° E.
 A house brs. N. 65° W. 6 00 chs. dist.
 77 00 Leave valley brs. E. & W. and ascend.
 80 00 Set post 4 ft. long 4 in. sq. with marked stone 12 in. in the ground for cor. to secs. 19, 24, 25 and 30, marked T 1 N, S 19 on NE., R 17 W. S. 30 on SE., R 18 W. S. 25 on SW. and S. 24 on NW. faces, with 2 notches on S. ~~and 4 notches on S.~~ and 4 notches on N. edges and raised a stone mound around post. Pits impracticable.
 Land for S. 24.00 chs. broken and mountainous, with 3rd rate soil; remainder (except 3.00 chs. broken land on north) rolling and level valley with 2nd rate soil. Dense undergrowth of Chaparral.
 October 4, 1895.

NORTH bet. secs. 19 & 24.

Var. 14° 30' E.

Ascend.
 .55 Cross wire fence brs. E. & W.
 2 00 Top of spur brs. E. & W. and descend.
 6 64 Cross wash 7 lks. wide course SW. and enter valley brs. NE. & SW.
 9 50 Leave valley brs. E. & W. and ascend.
 36 00 Top of high ridge brs. E. & W. and descend.
 40 00 Set a sandstone 20 x 14 x 8 ins. 15 ins. in the ground for $\frac{1}{4}$ sec. cor. marked $\frac{1}{4}$ on W. face, from which brs.
 A Live Oak 16" dia. N. 45 $\frac{1}{2}$ ° E. 131 lks. dist.
 marked $\frac{1}{4}$ S. B.T.
 A Live Oak 18" dia. N. 36 $\frac{1}{4}$ ° W. 149 lks. dist.
 marked $\frac{1}{4}$ S. B.T.
 51 46 Cross gulch 4 lks. wide course NE. and continue descent.
 60 25 Cross road brs. SE. & W.
 64 00 Cross gulch 4 lks. wide course NE. and continue descent.
 64 50 Cross gulch 6 lks. wide course E. and ascend.
 70 00 Top of spur brs. E. & W. and descend.
 75 00 Cross gulch 6 lks. wide course E. & W. and ascend.
 80 00 Set a post 4 ft. long 4 in. sq. with marked stone 12 in. in the ground for cor. to secs. 13, 18, 19 and 24, marked T 1 N. S. 18 on NE., R 17 W. S. 19 on SE., R 18 W. S. 24 on SW. and S 13 on NW. faces, with 3 notches on N. & S. edges and raised a stone mound around post. Pits impracticable.
 Land broken, rolling and level. Soil 2nd and 3rd rate.
 Scattering oak timber and dense undergrowth of chaparral.

NORTH bet. secs. 13 & 18.

Var. 14° 30' E.

Ascend.
 16 00 Top of ridge brs. N. 60° W. and S. 60° E. and descend.
 27 60 Cross gulch 4 lks. wide course E. and ascend.
 34 00 Top of spur brs. E. & W. and descend.
 36 00 Cross gulch 3 lks. wide course E. and ascend.
 36 92 Int. Bdy. Line of Ro. 91mi 36.54 chs. N. 89° 09' W. from cor. $\frac{4}{160}$

previously set by me and set a post $4\frac{1}{2}$ ft. long 4 in. sq. 12 in. in the ground for closing cor. to Tps. 1 N., Rs. 17 & 18 W. marked C.C. T. 1 N. on S., R 17 W. S. 18 on E. and T. 18 W. S. 13 on W. faces with 6 notches on S. E. & W. edges, from which brs.

A Live Oak 5 in. dia. S. $27\frac{1}{2}^{\circ}$ E. 172 lks. dist.

marked T 1 N. R 17 W. S. 18 B. T.

A Live Oak 18 in. dia. S. $25\frac{1}{2}^{\circ}$ W. 159 lks. dist.

marked T 1 N. R 18 W. S. 13 B. T.

No other tree within limits, raised a stone mound around post. Pits impracticable. Land rough and broken. Soil 3rd rate. Scattering timber of oak and dense undergrowth of chaparral.

Vol. 128-15

F. R. Glover

October 5, 1895

SAN BERNARDINO BASE LINE THROUGH

T. 1 N., R. 18 W., S. B. M.

Survey commenced Sept. 21, 1896, and executed with a Burt's Patent Improved Solar Compass, made by John Rouch of San Francisco. This instrument was examined by Jos. C. Sala, Examiner of Instruments for the U. S. Surveyor General for Calif., as per Certificate No. 20, dated June 11, 1895.

On the night of Sept. 20, 1896, at cor. to Tps. 1 N. and 1 S., Rs. 17 & 18 W. at 7h. 26m. P.M., I observe Polaris approaching its eastern elongation and mark the line thus determined by a tack driven in a wooden plug set in the ground, 5.00 chs. N. of my station.

On the morning of Sept. 21, 1896, at 7h. 00m. I lay off the Azimuth of Polaris $1^{\circ} 30'$ to the W. of the line and mark the true meridian thus established by driving a tack in a plug set firmly in the ground. The magnetic bearing of the true meridian at 7h. A. M. N. $14^{\circ} 54'$ W.

The angle thus determined reduced by the table, page 100 of the Surveying Manual, gives the mean magnetic declination $14^{\circ} 52'$ E.

Sept. 21, 1896, at 6h. 30m. A.M. corrected local mean time, I set off $34^{\circ} 07'$ N. on the Lat. arc; $0^{\circ} 24'$ N. on the Decl. arc; and determine a true meridian, Longitude $118^{\circ} 43'$ W. with Solar Compass.

At the cor. to Tps. 1 N. & 1 S., Rs. 17 & 18 W. on the S. B. Base Line, which is a redwood post 6 in. sq. 2 ft. above ground marked and witnessed as described by the Surveyor General. Thence I run

WEST bet. secs. 1 and 36.

Ascending.

00 05 Cross fence brs. N. & S.

6 00 A house brs. N. 45° W.

8 67 Cross fence brs. N. & S.

20 00 Top of ridge brs. N. & S. and descend.

20 10 Cross fence brs. N. & S.

Difference bet. measurement of 40 00 chs. by two sets of chainmen is 6 lks. position of middle point

By 1st set is 40.03 chs.

By 2nd set is 39.97 chs. the mean of which is

40 00 Set a sandstone $30 \times 18 \times 10$ ins. 21 ins. in the ground for $\frac{1}{4}$ sec. cor. marked S. C. 3 on W. face and raised a mound of stone 2 ft. base, $1\frac{1}{2}$ ft. high N. of cor. Pits impracticable, from which

A Live Oak 16 in. dia. brs. N. 12° W. 16 lks. dist.

marked S. C. $\frac{1}{4}$ S. B. T.

No other trees within limits.

44 70 Cross gulch 12 lks. wide course S. and ascend.

45 10 Cross fence brs. N. & S.
 46 00 A house brs. S. 6° W.
 50 50 Top of spur, trends N. and descend.
 60 60 Jackson Tweedy's house brs. N. 4½° E. Another house brs. N. 2° W.
 63 40 Cross gulch 6 lks. wide course NE. and ascend.
 Difference bet. measurements of 80 chs. by two sets of chainmen
 is 14 lks. Position of middle point,
 By 1st set 80.07 chs.
 By 2nd set 79 93 chs, the mean of which is
 80 00 Set an Oak post 4" sq. 3 ft. long with marked stone 24 ins. in
 the ground for cor. to secs. 1, 2, 35 and 36, marked S.C. T 1 N,
 S 36 on NE., R 18 W. S 1 on SE., T 1 S. S 2 on SW., and S 35 on
 NW. faces, marked with one notch on E. and five notches on E.
 edges and raised a mound of stone 2 ft. base 1½ ft. high N. of
 corner. Pits impracticable, from which
 An Oak 12" dia. brs. N. 2° E. 28 lks. dist.
 marked S. C. T 1 N, R 18 W, S 36 B.T.
 An Oak 5" dia. brs. S. 29° E. 31 lks. dist.
 marked S.C. T 1 S, R 18 W, S 1 B.T.
 An Oak 12" dia. brs. S. 60° W. 30 lks. dist.
 marked S. C. T 1 S, R 18 W, S 2 B.T.
 An Oak 4" dia. brs. N. 64° W. 20 lks. dist.
 marked S. C. T 1 N, R 18 W, S 35 B.T.
 Land hilly. Soil 2nd and 3rd rate.
 Timber oak. Dense undergrowth of same and chaparral.

WEST bet. Secs. 2 and 35.

Ascend.

8 50 Top of ridge brs. N. & S. +60 ft. above sec. cor. and descend.
 17 50 A house brs. S. 82° W.
 28 20 Cross gulch 8 lks. wide course S. 50° W. -100 ft. below ridge
 and ascend.
 33 00 Top of spur trends SW. -50 ft. below ridge, descend.
 36 30 Cross gulch 6 lks. wide course S. -50 ft. below spur, ascend.
 Difference bet. measurements of 40 chs. by 2 sets of chainmen
 is 8 lks. position of middle point
 By 1st set 39.96 chs.
 By 2nd set 40.04 chs, the mean of which is
 40 00 Set an Oak post 3 ft. long 3 in. sq. with marked stone 24 ins. in
 the ground for ¼ sec. cor. marked S.C. ¼ S, on N. face & raised
 a mound of stone 2 ft. base 1½ ft. high N. of cor.
 Pits impracticable, from which
 A Live Oak 24 ins. dia. brs. S. 82° E. 170 lks.. dist.
 marked S. C. ¼ S. B.T.
 Udell's house brs. S. 3° 40' E. 3.90 chs. dist.
 42 00 Cross fence brs. N. 70° W. and S. 70° E.
 44 15 Cross fence brs. N. & S.
 65 00 Top of ridge brs. N. & S. +150 ft. above gulch and descend.
 Difference bet. measurements of 80 chs. by 2 sets of chainmen
 is 16 lks. position of middle point
 By 1st set 79.92 chs.
 By 2nd set 80 08 chs., the mean of which is
 80 00 Set an Oak post 3 ft. long 4 in. sq. with marked stone 24 ins.
 in the ground for cor. to secs. 2, 3, 34 and 35, marked
 S.C. T 1 N, S 35 on NE., R 18 W. S 2 on SE., T 1 S, S 3 on SW.
 and S 34 on NW. faces, with 2 notches on E. and 4 notches on W.
 edges, dug pits 24 x 18 x 12 ins. in each section 5½ ft. dist.
 and raised a mound of earth 4 ft. base 2 ft. high N. of corner.
 from which
 A White Oak 30 ins. dia. brs. S. 72½° W. 264 lks. dist.
 marked S.C. T 1 S, R 18 W, S. 3, B.T.
 No other trees within limits.
 This corner is set in low sag.
 Land broken and mountainous. Soil 2nd and 3rd rate.
 Timber Oak. Dense undergrowth of same and chaparral.

September 21, 1896.

Oct. 9, 1896, at 7h. 30m. A.M. l.m.t., I set off $34^{\circ} 07'$ N. on the Lat. arc and $6^{\circ} 35'$ S. on the Decl. arc, and determine a true meridian with a solar at the cor. to secs. 2, 3, 34 and 35.

WEST bet. secs. 3 and 34.

Ascend.

6 00

Top of ridge brs. N. & S. and descend.

Difference in measurements of 21.45 chs. by 2 sets of chainmen is 4 lks. position of middle point

By 1st set 21.47 chs.

By 2nd set 21.47 chs. the mean of which is

22 15

Int. Rancho Las Virgenes at a point S. $5^{\circ} 47'$ W. 18.77 chs. from cor. L.V. No. 12, which is a granite stone 18 x 12 ins. 24 ins. above ground and marked and witnessed as described by Surveyor General, and set a sandstone 20 x 10 x 8 ins. 15 ins. in the ground for closing cor. to frac. secs. 3 and 34, marked C.C. on E. and L.V. on west faces with 3 notches on E. and W. edges and raised a mound of stone 2 ft. base $1\frac{1}{2}$ ft. high E. of corner. Pits impracticable.

A White Oak 16 in. dia. brs. S. 29° E. 89 lks. dist.

marked T 1 S, R 18 W., S. C.C. B.T.

Thence continue on a blank line through Rancho Las Virgenes.

Descend.

35 80

Cross road brs. N. & S.

Difference bet. measurements of 40 chs. by 2 sets of chainmen is 20 lks. position of middle point

By 1st set 39.90 chs.

By 2nd set 40 10 chs. the mean of which is

40 00

Set a blank post for $\frac{1}{2}$ sec. cor. in dry bed of creek, 4 00 chs. wide course SW.

58 00

Enter dense chaparral.

Difference bet. measurements of 80 chs. by 2 sets of chainmen is 10 lks. position of middle point

By 1st set 80.05 chs.

By 2nd set 79 95 chs. the mean of which is

80 00

Set a blank post for cor. to secs. 3, 4, 33 and 34.

Land broken and hilly. Soil 2nd and 3rd rate.

Timber Oak. Dense undergrowth of chaparral.

WEST on a blank line bet. secs. 4 & 33 across Rancho Las Virgenes.

Ascend.

3 75

Top of ridge brs. S. 80° E. & N. 80° W. and descend.

22 50

Cross gulch 5 lks. wide, course SE. and ascend.

39 50

Top of ridge brs. S. 60° E. & N. 60° W. and descend.

Difference bet. measurement of 40 chs. by 2 sets of chainmen is 8 lks. position of middle point

By 1st set 40.04 chs.

By 2nd set 39 96 chs. the mean of which is

40 00

Set a blank post for $\frac{1}{2}$ sec. cor.

Difference bet. measurement of 80 chs. by 2 sets of chainmen is 12 lks. position of middle point

By 1st set 80.06 chs.

By 2nd set 79 94 chs.

80 00

Set a blank post for cor. to secs. 4, 5, 32 and 33, in dry bed of creek course S.

Land broken and mountainous. Soil 2nd and 3rd rate.

Timber Oak. Dense undergrowth of same and chaparral.

Oct. 9, 1896.

Oct. 10, 1896, at 7h. 30m. A.M. l.m.t., I set off $34^{\circ} 07'$ N. on the Lat. arc; and $6^{\circ} 58'$ S. on the Decl. arc and determine a true meridian with the solar at cor. to secs. 4, 5, 32 and 33.

WEST on a blank line bet secs. 5 and 32, across Rancho Las Virgenes.

.75

Cross road brs. N. & S.

6 19

At this point of intersection, chains agree.

Int. Rancho Las Virgenes at a point S. $7^{\circ} 19'$ E. 5.40 chs. dist.

from cor. L.V. No. 5, which is a sandstone 22 x 12 x 7 ins. set firmly in the ground marked and witnessed as described by me in re-survey of Rancho and set a sandstone 18 x 12 x 10 ins. 12 in. in the ground for closing cor. to frac. secs. 5 and 32, marked C.C. on E. and L.V. on W. faces, and raised a mound of stone 2 ft. base 1½ ft. high E. of corner. Pits impracticable.

13 39 At this point of intersection, chains agree.
Int. Rancho Las Virgenes at a point N. 50½° E. 8.37 chs. dist. from cor. L.V. No. 4, which is a sycamore tree 18 in. dia. marked and witnessed as described by Surveyor General and
Set a sandstone 12 x 12 x 8 ins. 8 ins. in the ground for closing cor. to frac. secs. 5 and 32, marked C.C. on E. and L.V. on W. faces and raised a mound of stone 2 ft. base 1½ ft. high E. of corner. Pits impracticable.

16 00 Cross road brs. N. 20° E. & S. 20° W.
20 00 Cross La Sierra creek 20 lks. wide course N.
20 40 Cross road brs. N. & S.
25 20 Cross road brs. NW. & SE.
28 52 At this point of intersection, chains agree.
Int. Rancho Las Virgenes at a point N. 58° W. 10.22 chs. dist. from cor. L.V. No. 4, previously described and set a sandstone 24 x 11 x 10 ins. 18 ins. in the ground for closing cor. to frac. secs. 5 and 32, marked C.C. on W. and L.V. on E. faces, and raised a mound of stone 2 ft. base 1½ ft. high W. of corner. Pits impracticable.
Difference bet. measurement of 40 chs. by 2 sets of chainmen is 16 lks. position of middle point
By 1st set 39.92 chs.
By 2nd set 40.08 chs. the mean of which is
40 00 Set a sandstone 19 x 10 x 8 ins. 12 ins. in the ground marked S.C. ½ on N. face and raised a mound of stone 2 ft. base 1½ ft. high Pits impracticable.
Ballard's house brs. S. 47½° E. about 20.00 chs. dist.
42 50 Cross gulch 6 lks. wide course S. 10° E. and ascend.
48 00 Top of ridge brs. N. 80° E. and S. 80° W. and descend.
76 75 Cross gulch 5 lks. wide course N. and ascend.
Difference bet. measurements of 80 chs. by 2 sets of chainmen is 8 lks. position of middle point
By 1st set 79.96 chs.
By 2nd set 80.04 chs. the mean of which is
80 00 Set a limestone 22 x 12 x 10 ins. 16 ins. in the ground for cor. to secs. 5, 6, 31 and 32, marked S.C. on N. face with 5 notches in E. and 1 notch on W. edges and raised a mound of stone 2 ft. base 1½ ft. high N. of cor. Pits impracticable.
Land broken and mountainous. Soil 3rd rate.
Timber Oak. Dense undergrowth same and chaparral.

WEST bet. secs. 6 and 31.
Descend.
3 25 Cross gulch 6 lks. wide course N. and ascend.
5 25 Top of spur trends N. +50 ft. above gulch and descend.
9 75 Cross gulch 7 lks. wide course N. 15° W. -100 ft. below spur and ascend.
11 50 Top of spur trends N. 20° W. +50 ft. above gulch and descend.
20 00 Cross gulch 10 lks. wide course N. -100 ft. below spur and ascend.
25 00 Top of spur trends N. +50 ft. above gulch and descend.
28 10 Cross gulch 8 lks. wide course N. 10° W. and ascend.
33 00 Top of spur trends N. and descend.
38 49 Cross gulch 7 lks. wide course N. -90 ft. below spur and ascend.
Difference bet. measurement of 40 chs. by 2 sets of chainmen is 18 lks. position of middle point
By 1st set 40.09 chs.
By 2nd set 39.91 chs. the mean of which is
40 00 E. slope of spur, 30 ft. above gulch, set a sandstone 20x10x8 ins. 25 ins. in the ground for ¼ sec. cor. marked S.C. ¼ on N. face and raised a mound of stone 2 ft. base 1½ ft. high N. of corner Pits impracticable.

51 00 Top of spur trends N. +75 ft. above corner and descend.
 55.20 Cross gulch 10 lks. wide course N. 10° W. -50 ft. below spur and ascend.
 60 25 Top of spur trends N. 10° W. +60 ft. above gulch and descend.
 68 00 Cross low sag and ascend.
 77 50 Top of spur trends N. +75 ft. above gulch and descend.
 Difference bet. measurements of 80 chs. by 2 sets of chainmen is 6 lks. position of middle point
 By 1st set 80.03 chs.
 By 2nd set 79.97 chs. the mean of which is
 80 00 Set a sandstone 30 x 12 x 10 ins. 22 ins. in the ground for cor. to Tps. 1 N. and 1 S., Rs. 18 and 19 W. marked with 6 notches on each edge, S. C. on N. face, raised a stone mound 2 ft. base 1½ ft. high W. of corner. Pits impracticable.
 Land broken and mountainous. Soil 2nd and 3rd rate.
 Timber Oak. Dense undergrowth same and chaparral.

Vol. 363-13

JAMES H. GLOVER.

Oct. 10, 1896

Nov. 7, 1896, at 7h. 30m. A.M. l.m.t., I set off 34° 07' N. on the Lat. arc and 16° 32' S. on the Deol. arc and determine a true meridian with the solar at the cor. to secs. 1, 2, 35 and 36.
 I commence at the cor. to secs. 1, 2, 35 and 36, on the San Bernardino Base line on the S. B. previously described by me on page 3 of my book of Ext. Thence I run
 N. 0° 01' W. bet. secs. 35 and 36, ascend through chaparral and Oak timber.
 3 50 Top of spur 25 ft. above cor. to secs. 1, 2, 35 and 36, bra. E. and W. and descend.
 7 00 Gulch 6 lks. wide course E. 50 ft. below top of spur. Ascend.
 10 50 Top of spur 50 ft. above gulch bra. E. & W. Descend.
 20 65 Fence bra. NE. & SW.
 28 00 Gulch 10 lks. wide course E. 200 ft. below top of spur. Ascend.
 32 50 Top of spur 60 ft. above gulch bra. E. & W. Descend.
 38 30 Gulch 7 lks. wide course E. 30 ft. below top of spur. Ascend.
 40 00 Set a sandstone 18 x 12 x 9 ins. 9 ins. in the ground for ¼ sec. cor. marked ¼ on N. face, from which
 A Live Oak 14 ins. dia. bra. S. 37½° W. 62 lks. dist.
 marked ¼ S. B.T.
 A Live Oak 5 ins. dia. bra. S. 72½° E. 42 lks. dist.
 marked ¼ S. B.T.
 From this ¼ sec. cor. a house bra. S. 2½° E. about 15 chs. dist.
 40 15 Wire fence bra. E. & W.
 41 85 Top of rocky point bra. E. & W. Descend.
 43 90 Gulch 8 lks. wide course S. 80° E. 50 ft. below ¼ sec. cor. Ascend.
 54 00 Top of spur bra. SE. & NW. Descend.
 56 75 Spring 13 lks. E. of line.
 57 75 Canyon 25 lks. wide course SE.
 Leave timber and ascend through chaparral.
 65 50 Top of ridge 200 ft. above canyon bra. NW. & SE.
 Descend through chaparral.
 72 75 Canyon 25 lks. wide course N. 80° E. 150 ft. below top of ridge
 Ascend.
 74 50 Top of ridge bra. N. 40° E. & S. 40° W. 40 ft. above canyon. Descend.
 78 55 Canyon 20 lks. wide, course N. 20° E. 40 ft. below top of ridge.
 Ascend.
 80 00 Set a sandstone 36 x 18 x 4 ins. 27 ins. in the ground for corner to secs. 25, 26, 35 and 36, marked with 1 notch on E. & S. edges, from which
 A Live Oak 20 in. dia. bra. S. 71½° E. 85 lks. dist.
 marked T 1 N, R 18 W, S 36 B.T.
 A Live Oak 18 ins. dia. bra. N. 56° E. 76 lks. dist.
 marked T 1 N, R 18 W, S 25 B.T.
 No other trees within limits and raised a mound of stone 2 ft. base 1½ ft. high W. of corner. Pits impracticable.
 Land rough and mountainous. Soil 2nd and 3rd rate.
 Timber Oak. Dense undergrowth same and chaparral.

EAST on a random line bet. secs. 25 and 36.
 40 00 Set temp. $\frac{1}{4}$ sec. corner.
 79 90 Int. E. bdy. of Tp. 13 lks. S. of cor. to secs. 25, 30, 31 and 36, which is a sandstone set firmly in the ground, marked and witnessed as described by the Surveyor General. Thence I run
 S. 89° 54' W. on a true line bet. secs. 25 and 36.
 12 75 A cabin brs. N. 46° E. 15 chs. dist. Ascend.
 13 50 Top of ridge brs. S. 20° E. and N. 20° W. Descend.
 24 46 Head of canyon 30 ft. below top of ridge, course SE. Ascend.
 37 52 Top of ridge 100 ft. above canyon brs. N. & S. Descend.
 39 95 Set a Limestone 24 x 14 x 6 ins. 18 ins. in the ground for $\frac{1}{4}$ sec. cor. marked $\frac{1}{4}$ on N. face, from which
 A Live Oak 16 in. dia. brs. S. 36° W. 113 lks. dist.
 marked $\frac{1}{4}$ S. S. T.
 No other tree within limits and raised a mound of stone 2 ft. base 1 $\frac{1}{2}$ ft. high N. of cor. Pits impracticable. Dug pits 24 x 18 x 12 ins. E. & W. of corner. The cor. is 50 ft. below top of ridge.
 47 50 Enter valley, leave chaparral, brs. N. & S.
 56 25 House brs. S. 14° W. 40 chs. dist.
 57 00 Leave valley, brs. N. & S. Ascend.
 57 16 Road brs. N. & S.
 57 58 Wire fence brs. N. & S.
 61 50 Top of ridge brs. NW. & SE. Descend.
 63 25 Gulch 6 lks. wide course SE. Ascend.
 Enter valley, brs. SE. & NW.
 68 00 Cultivated field.
 69 00 Leave valley, enter chaparral, brs. NW. & SE.
 75 75 Top of ridge brs. S. 40° E. and N. 40° W. Descend.
 79 00 Gulch 12 lks. wide course N. 20° E. 40 ft. below top of ridge. Ascend.
 79 90 The cor. to secs. 25, 26, 35 and 36.
 Land mountainous. Soil 2nd and 3rd rate.
 Timber Oak. Undergrowth same and chaparral.

Nov. 7, 1896.

Nov. 8, 1896, at 7h. 45m. A.M. l.m.t., I set off 34° 08' W. on the Lat. arc, 16° 51' S. on the Decl. arc and determine a true meridian with the solar, the cor. to secs. 25, 26, 35 and 36. Described on page
 Thence I run

WEST bet. secs. 26 and 35. Ascend through chaparral.
 10 00 Top of ridge 100 ft. above cor. to secs. 25, 26, 35 and 36, brs. NE. & SW. Descend.
 23 20 Canyon 10 lks. wide, course N. 45° E. 150 ft. below top of ridge. Ascend.
 29 55 Int. Bdy. of Rancho Las Virgenes, at a point N. 49° E. 14.45 chs. dist. from cor. 1 M. L. V. which is a sandstone 10 x 8 x 9 ins. above ground, marked and witnessed as described by me, in the re-survey of the Rancho.
 Set a sandstone 26 x 12 x 8 ins. 20 ins. in the ground for closing cor. to frac. secs. 26 and 35, marked C. C. on E., S. 35 on S., L. V. on W. and S 26 on N. faces with 1 groove on S. and 2 grooves on E. faces, dug pits 24 x 18 x 12 ins. N. 49° E. and S. 49° W. 3 ft. dist. and S. 89° 54' E. of stone 7 ft. dist. and raised a mound of earth 4 ft. base 2 ft. high E. of corner.
 Land rough and mountainous. Soil 2nd and 3rd rate.
 Timber Oak. Undergrowth chaparral.

N. 0° 01' W. bet. secs. 25 and 26.

Descend through chaparral.
 1 50 Gulch 10 lks. wide course SE. Ascend.
 3 50 Top of spur brs. E. & W. Descend.
 8 50 Gulch 8 lks. wide, course N. 80° E. 50 ft. below spur. Ascend.
 11 50 Leave chaparral and enter cultivated ground, brs. E. & W. Descend.

Tweedy's house brs. N. 72° E. 15 chs. dist.
 John Knox' house brs. N. 48 3/4° E. 16 chs. dist.
 20 85 Wire fence brs. E. & W.
 25 30 Ventura and Los Angeles Road brs. E. & W.
 26 00 Int. Bdy. of Las Virgenes Rancho, at a point N. 49° E. 13.78 chs.
 dist. from cor. 1/4 M. L. V. which is a limestone marked and witnessed
 as described by me in the re-survey of the Rancho.
 Set a granite stone 24 x 12 x 12 ins. 18 ins. in the ground for
 closing cor. to secs. 25 and 26, marked C. O. on S., L. V. on N.,
 S 25 on E. S 26 on W. face, from which
 A White Oak 16 ins. dia. brs. N. 84 1/2° E. 210 lks. dist.
 marked T 1 N. R 18 W, S 25 N.T.
 No other trees within limits and raised a mound of stone 2 ft.
 base 1 1/2 ft. high S. of cor. Pits impracticable.
 Land rough and hilly. Soil 2nd and 3rd rate.
 Timber Oak and dense undergrowth, chaparral.

Nov. 9, 1896

Nov. 10, 1896, at 5h. Am. A.M. 1.m.t., I set off 34° 09' N. on
 Lat. arc, 17° 24' S. on Decl. arc, and determine a true meridian
 with the solar at cor. to secs. 19, 24, 25 and 30, which is a post
 4 ins. sq. 3 ft. above ground, marked and witnessed as described
 by Surveyor General. Thence I run

WEST bet. secs. 24 and 25. Descend.
 2 20 Enter cultivated field brs. N. & S. Ascend.
 7 00 Low spur brs. N. & S.
 Huston's house brs. S. 9° E. 1.35 chs. dist. Descend.
 11 00 James Brigg's cabin brs. N. 27 1/2° W.
 11 50 Dry bed of creek 10 lks. wide course S. 20° W.
 Ascend over open hills, leave cultivated ground, brs. NE. & SW.
 14 75 Top of ridge 200 ft. above creek brs. S. 20° E. & N. 20° W. Descend.
 20 74 Gulch 8 lks. wide course S. 30° E. 100 ft. below top of ridge. Ascend.
 39 95 Wire fence brs. N. & S.
 40 00 Set a limestone 16 x 16 x 6 ins. 11 ins. in the ground for 1/4 sec.
 cor. marked 1/4 on N. face, dug pits 18 x 18 x 12 ins. E. & W. of
 stone 3 ft. dist. and raised a mound of earth 3 1/2 ft. base, 1 1/2 ft.
 high N. of corner.
 46 15 Top of spur 100 ft. above 1/4 sec. cor. brs. S. 20° W. & N. 20° E.
 Descend.
 55 25 Head of Posita Canyon 15 lks. wide course SE. Ascend.
 58 00 Top of spur brs. N. & S. Descend.
 60 11 Branch of Posita Canyon 15 lks. wide course SE. Ascend.
 63 32 Int. the Bdy. of Las Virgenes Rancho at a point N. 3° 04' E. 1 ch.
 from cor. 1/4 M. L. V. which is a sandstone 14 x 12 x 6 ins. above
 ground, marked and witnessed as described by me in the re-survey
 of the Rancho, and set a sandstone 22 x 16 x 10 ins. 16 ins. in
 the ground for closing cor. to frac. secs. 24 and 25, marked C. O.
 on E. L. V. on W. S 24 on N. S 25 on S. and 2 grooves on S. faces
 and raised a mound of stone 2 ft. base 1 1/2 ft. high E. of cor.
 Pits impracticable.
 Land rough and mountainous. Soil 2nd and 3rd rate.
 Timber Oak. Undergrowth same and chaparral.

From the cor. to secs. 13, 18, 19 and 24, on E. B. of Tp. which is
 a post 4 ins. sq. 3 ft. above ground, marked and witnessed as des-
 cribed by Surveyor General, I run

WEST bet. secs. 13 and 24. Descend.
 3 50 Canyon 25 lks. wide course SE. and ascend.
 14 63 Top of ridge 60 ft. above canyon brs. SE. & NW. Descend.
 29 13 Canyon 25 lks. wide course SE. 100 ft. below ridge. Ascend.
 33 83 Leave chaparral, brs. NW. & SE., enter cultivated ground.
 34 00 Top of ridge 100 ft. above canyon brs. S. 35° E. and N. 35° W.
 Descend.
 40 00 Set a limestone 36 x 18 x 4 ins. 27 ins. in the ground for 1/4 sec.

56 80 cor. marked $\frac{1}{4}$ on N. face and raised a mound of stone 2 ft. base $1\frac{1}{2}$
 58 33 ft. high N. of cor. Pits impracticable.
 Leave cultivated ground brs. NW. & SE.
 Int. E. B. of Rancho Las Virgenes at a point N. $3^{\circ} 04'$ E. 1.04 chs.
 dist. from cor. $\frac{1}{4}$ M. L. V. which is a limestone $10 \times 8 \times 5$ ins.
 above ground, marked and witnessed as described by me in my re-
 survey of the Rancho, and set a limestone $24 \times 20 \times 6$ ins. 18 ins.
 in the ground, for closing cor. to frac. secs. 13 and 24, marked
 C. G. on E. L. V. on W. S 13 on N. S 24 on S. Dug pits $18 \times 18 \times 10$
 ins. S. $3^{\circ} 04'$ W. and N. $3^{\circ} 04'$ E. 3 ft. dist. and E. of stone 7
 ft. dist. and raised a mound of earth 4 ft. base 2 ft. high E. of
 cor.
 Pits impracticable.
 Land rough mountainous. Soil 3rd rate.
 Timber Oak. Dense undergrowth chaparral. Nov. 10, 1896.

Nov. 11, 1896, at 8h. Am. A.M. 1.m.t., I set off $34^{\circ} 07'$ N. on the
 Lat. arc, $17^{\circ} 41'$ S. on the Decl. arc and determine a true meridian
 with the solar at the cor. to secs. 31, 32, 5 and 6, described by
 me in my book of Ext. on page 9, I run

7 90 N. $0^{\circ} 03'$ W. bet. secs. 31 and 32. Descend.
 Low sag 100 ft. below cor. to secs. 31, 32, 6 and 5, brs. N. 20° W.
 and S. 20° E. Ascend.
 10 50 Top of spur 75 ft. below sag, brs. N. 60° W. & S. 60° E. Descend.
 22 48 Canada Lobe, 50 lks. wide, course N. 45° E. below top of spur 150 ft.
 Ascend.
 22 75 Cultivated land brs. E. & W.
 23 00 Road brs. NE. & SW.
 J. W. Hamilton's house brs. N. $44\frac{1}{2}^{\circ}$ E. 10 chs. dist.
 28 00 Leave cultivated ground brs. E. & W. Ascend.
 40 00 Set a sandstone $24 \times 12 \times 6$ ins. 18 ins. in the ground for $\frac{1}{4}$ sec.
 cor. marked $\frac{1}{4}$ on W. face and raised a mound of stone 2 ft. base, $1\frac{1}{2}$
 ft. high W. of cor. Pits impracticable.
 From this $\frac{1}{4}$ sec. cor. Hamilton's house brs. S. $31\frac{3}{4}^{\circ}$ E.
 40 50 Top of ridge 300 ft. above Lobe Creek brs. E. & W. Descend.
 54 80 Gulch 150 ft. below top of ridge. Ascend.
 54 50 Int. S. Bdy. of Rancho Las Virgenes at a point S. 22° E. 19.00 chs.
 dist. from cor. L. V. 2 which is a
 Live Oak 20 ins. dia. marked and witnessed as described by
 Surveyor General.
 Set a sandstone $18 \times 10 \times 10$ ins. 12 ins. in the ground for closing
 cor. to frac. secs. 31 and 32, marked C. G. on S. L. V. on N., S 31
 on W., S 32 on E. faces and raised a mound of stone 2 ft. base $1\frac{1}{2}$
 ft. high S. of cor. Pits impracticable.
 Land rough and mountainous. Soil 2nd and 3rd rate.
 Timber Oak. Dense undergrowth same and chaparral.

From the cor. to secs. 2, 3, 34 and 35, on the S. B. of Tp. des-
 cribed by me on page 5 of my book of Extérieurs, I run

N. $0^{\circ} 01'$ W. bet. secs. 34 and 35.
 Ascend through oak and chaparral.
 4 50 Top of ridge 60 ft. above cor. to secs. 2, 3, 34 and 35, brs. E. & W.
 Descend.
 22 75 Canyon 50 lks. wide, course N. 45° W. 200 ft. below top of ridge.
 Ascend.
 36 47 Int. the S. B. of Rancho Las Virgenes at a point N. 49° E. 27.23
 chs. dist. from cor. L. V. 12, which is a granite stone $18 \times 12 \times 24$
 ins. above ground, marked and witnessed as described by Surveyor
 General.
 Set a limestone $20 \times 12 \times 10$ ins. 15 ins. in the ground for closing
 cor. to frac. secs. marked C. G. on S, L. V. on N., S 35 on E., S 34
 on W. faces, dug pits $18 \times 18 \times 12$ ins. N. 49° E. and S. 49° W. 3
 ft. and S. of stone 7 ft. dist. and raised a mound of earth 4 ft.
 base 2 ft. high S. of corner.
 Land broken, mountainous. Soil 3rd rate. Timber oak. Dense under-
 growth of chaparral. Vol 363-6 JAMES R. CLOVER Nov. 11, 1896

Oct. 18, 1896, at 8h. Om. A.M., l.m.t. I set off $34^{\circ} 07'$ N. on the Lat. arc, $9^{\circ} 57'$ S. on the Decl. arc and determine a true meridian with the solar at the cor. to secs. 2, 3, 34 and 35, described on page 5 of my book of Exteriora.

S. $0^{\circ} 01'$ E. bet. secs. 2 and 3. Ascend.
 11 40 Top of spur brs. E. & W. Descend.
 13 75 Gulch 8 lks. wide course SE. Enter chaparral and ascend.
 21 50 Top of ridge 100 ft. above gulch brs. E. & W. Descend.
 40 00 Set an Oak post 3 ft. long 3 ins. sq. with marked stone 24 ins. in the ground for $\frac{1}{4}$ sec. cor. marked $\frac{1}{4}$ S. on W. face, dug pits 18 x 18 x 12 ins. N. & S. of post, 3 ft. dist. and raised a mound of earth $3\frac{1}{2}$ ft. base, $1\frac{1}{2}$ ft. high W. of cor.
 43 00 Leave chaparral, enter Ira Brown's field, brs. E. & W.
 49 50 Road 160 ft. below ridge brs. E. & W. Ascend.
 50 13 Wire fence brs. E. & W.
 50 58 Ira Brown's house brs. N. 1.00 ch. dist.
 51 75 Offset 30 lks. W. to avoid barn.
 52 70 Fence brs. E. & W. offset 30 lks. E. to line.
 Enter chaparral brs. E. & W.
 72 00 Top of ridge 200 ft. above road brs. NW. & SE. and descend.
 79 97 Set a sandstone 24 x 12 x 8 ins. 18 ins. in the ground for cor. to secs. 2, 3, 10 and 11, marked with 5 notches on S. and 2 notches on E. edges, and raised a mound of earth 4 ft. base, 2 ft. high W. of corner. Pits impracticable.
 This corner is set in low sag.
 Land rough and mountainous. Soil 2nd and 3rd rate.
 Timber Oak. Undergrowth chaparral.

Oct. 23, 1896, at 7h. 45m. A.M. l.m.t., I set off $34^{\circ} 07'$ N. on the Lat. arc, $11^{\circ} 43'$ S. on the Decl. arc and determine a true meridian with the solar at the cor. to secs. 3, 4, 33 and 34, described on page 7 of my book of Exteriora. Thence I run

From the blank post set for cor. to secs. 3, 4, 33 and 34, in Rancho Las Virgenes on San Bernardino Base Line, I run

S. $0^{\circ} 02'$ E. in Las Virgenes Grant bet. secs. 3 and 4.

40 00 Set a blank post for $\frac{1}{4}$ sec. cor.
 72 38 Int. Bdy. of Rancho Las Virgenes, at a point S. 83° W. 7.58 chs. distant from cor. L V. No. 10, which is a sandstone 12 x 10 ins. 6 ins. above ground marked and witnessed as described by Surveyor General.
 Set a sandstone 24 x 12 x 6 ins. 18 ins. in the ground for closing cor. to frac. secs. 3 and 4, marked L V on N., O O on S., S 3 on E. and S 4 on W. faces, and raised a mound of stone 2 ft. base $1\frac{1}{2}$ ft. high S. of cor. Pits impracticable.
 80 00 Set a sandstone 20 x 16 x 10 ins. 15 ins. in the ground for cor. to secs. 3, 4, 9 and 10, marked with 5 notches on S. and 3 notches on E. edges and raised a mound of stone 2 ft. base $1\frac{1}{2}$ ft. high W. of corner. Pits impracticable.
 From this cor. a house brs. N. $29\frac{1}{2}^{\circ}$ E.
 Land mountainous and broken. Soil 2nd and 3rd rate.
 Timber Oak. Dense undergrowth of Chaparral.

EAST on a random line bet. secs. 3 and 10.

40 00 Set temp. $\frac{1}{4}$ sec. cor.
 80 34 Int. N. & S. line 40 lks. N. of cor. to secs. 2, 3, 10 and 11, Thence I run

N. $89^{\circ} 43'$ W. on a true line bet. secs. 3 and 10.

Descend through chaparral.

21 50 Road brs. N. 27° W. and S. 27° E. in a canyon 50 lks. wide, course S. 30° E. 200 ft. below cor. to secs. 2, 3, 10 and 11; ascend.
 39 00 Top of ridge 175 ft. above canyon, brs. N. 50° W. and S. 50° E.

Descend.
 40 17 Set a sandstone 20 x 12 x 6 ins. 15 ins. in the ground for $\frac{1}{4}$ sec.
 cor. marked $\frac{1}{4}$ on N. face and raised a mound of stone 2 ft. base $1\frac{1}{2}$
 ft. high N. of corner. Pits impracticable.
 40 52 Spur brs. NE. & SW. and continue descent.
 62 10 Canyon 12 lks. wide course N. Ascend.
 67 00 House brs. N. 22 $\frac{3}{4}$ ° W. and descend.
 80 34 The cor. to secs. 3, 4, 9 and 10.
 From this cor. a house brs. N. 29 $\frac{1}{2}$ ° E.
 Land mountainous and rough. Soil 2nd and 3rd rate.
 Timber Oak. Dense undergrowth.

Oct. 23, 1896

Oct. 28, 1896, at 8h. 00m. A.M. l.m.t., I set off 34° 07' N. on
 the Lat. arc, 13° 26' S. on the Decl. arc, and determine a true
 meridian with a solar at the cor. to secs. 4, 5, 32 and 33, des-
 cribed on page 7 of my Book of Exterior. Thence I run

S. 0° 02' E. between secs. 4 and 5.

Along Triunfo creek.

24 00 Leave creek course SE. Ascend.
 27 40 Int. Bdy. of Las Virgenes, at a point S. 61° 37' E. 3.41 obs. dist.
 from Cor. L V. No. 6, which is a live oak 32 ins. dia. marked and
 witnessed as described by Surveyor General.
 Set a sandstone 16 x 10 x 8 ins. 11 ins. in the ground for closing
 cor. to frac. secs. 4 and 5, marked L V. on N., C C. on S., S 4. on
 E., S 5 on W. faces and raised a mound of stone 2 ft. base $1\frac{1}{2}$ ft.
 high W. of corner. Pits impracticable.
 40 00 Set a sandstone 16 x 12 x 6 ins. 11 ins. in the ground for $\frac{1}{4}$ sec.
 cor. marked $\frac{1}{4}$ on W. face, from which
 A Live Oak 8 ins. dia. brs. S. 1° 30' E. 54 lks. dist.
 marked $\frac{1}{4}$ S. B T.
 A Live Oak 10 ins. dia. brs. N. 70 $\frac{1}{2}$ ° W. 100 lks. dist.
 marked $\frac{1}{4}$ S. B T.
 54 75 Top of ridge brs. N. 80° E. & S. 80° W. Descend.
 58 00 Gulch 8 lks. wide course E. Ascend.
 64 50 Top of ridge 50 ft. above gulch brs. E. & W. Descend.
 80 00 Set a sandstone 40 x 10 x 10 ins. 30 ins. in the ground for cor. to
 secs. 4, 5, 8 and 9, marked with 5 notches on S. and 4 notches on
 E. edges, from which
 A Live Oak 12 ins. dia. brs. S. 47° E. 59 lks. dist.
 marked T 1 S, R 18 W, S 9 B T.
 A Live Oak 15 ins. dia. brs. S. 6° W. 84 lks. dist.
 marked T 1 S, R 18 W, S 8 B T.
 No other trees within limits, and raised a mound of stone 2 ft.
 base, $1\frac{1}{2}$ ft. high W. of corner. Pits impracticable.
 Land rough, mountainous. Soil 3rd rate.
 Timber Oak. Undergrowth same and chaparral.

EAST on a random line bet. secs. 4 and 9.

40 00 Set temp. $\frac{1}{4}$ sec. cor.
 79 92 Int. N. & S. line 18 lks. S. of cor. to secs. 3, 4, 9 and 10.
 Thence I run
 S. 89° 52' W. on a true line bet. secs. 4 and 9.

Descend through chaparral.

6 50 Gulch 10 lks. wide course N. and ascend.
 27 00 Top of spur 100 ft. above gulch brs. N. 10° W. and S. 10° E. Descend.
 31 50 Gulch 9 lks. wide course N. 10° E. Ascend.
 35 00 Top of spur brs. N. 10° E. and S. 10° W. Descend.
 38 45 Gulch 6 lks. wide course N. 15° E. Ascend.
 39 96 Set a sandstone 18 x 10 x 8 ins. 12 ins. in the ground for $\frac{1}{4}$ sec.
 cor. marked $\frac{1}{4}$ on N. face and raised a mound of stone 2 ft. base $1\frac{1}{2}$
 ft. high N. of cor. Pits impracticable.
 49 00 Top of spur brs. N. & S. Descend.

53 25 Gulch 8 lks. wide, course N. 60° E.
 Ascend steep rocky bluff.
 59 00 Top of bluff 200 ft. above gulch. Descend.
 68 00 Canyon 20 lks. wide, course E. 150 ft. below bluff. Ascend.
 79 92 The cor. to secs. 4, 5, 8 and 9.
 Land rough and mountainous. Soil 3rd rate.
 Timber Oak. Undergrowth chaparral.

Oct. 28, 1896.

Vol. 363-16

JAMES R. GLOVER.

RESURVEY

OF

RANCHO LAS VIRGENES

in Tps. 1 N., & 1 S., R. 18 W.

B. B. M.

Oct. 2, 1896, at 7h. 00m. A.M. l.m.t., I set off 34° 08' N. on the
 Lat. arc, 3° 53' W. on the Decl. arc and determine a true meridian
 with the solar at cor. No. 6 and L V. No. 1.
 Thence from cor. G. No. 6, L V. No. 1, I run

106 94 N. 39½° E. on a random line and at
 I arrive at a point S. 50½° E. 7.02 chs. dist. from a sandstone
 marked L V. No. 16.

At cor. of a wire fence on S. side of Los Angeles and Ventura road.
 The stone has been set by County Surveyor Goldsworthy in place of
 the post that had decayed. The bearing trees are standing as des-
 cribed by the Surveyor General. I marked

A White Oak 36 ins. dia. brs. N. 54½° E. 366 lks. dist.
 marked L V. 16 B T. Thence

S. 35° 45' W. on a true line over valley.

25 00 Leave valley, brs. E. & W. and ascend through dense chaparral.
 40 00 Set a sandstone 24 x 12 x 8 ins. 18 ins. in the ground marked
 ¼ M. L V. on side facing ranch and raised a mound of stone 2 ft.
 base, 1½ ft. high in ranch at right angle to line.
 Pits impracticable.

Cor. 200 ft. above cor. L V. 16.

50 75 Top of ridge brs. E. & W. +150 ft. above cor. and descend.
 80 00 Set a cinnamon stone 24 x 12 x 8 ins. 18 ins. in the ground
 marked 1, M. L V. on side of stone facing ranch and raised a
 mound of stone 2 ft. base, 1½ ft. high in ~~xxxxxxx~~ ranch at
 right angle to line. Pits impracticable, -200 ft. below ridge.
 100 00 Foot of descent 100 ft. below cor. and enter flat brs. E. & W.
 104 00 Remains of old adobe house brs. W. 40 lks. dist.
 106 30 Cross Triunfo Canyon 50 lks. wide course S. 80° E. and ascend.
 107 17 To cor. L V. No. 1 and G. No. 6.
 Land broken and mountainous. Soil 2nd and 3rd rate.
 Timber Oak. Dense undergrowth of chaparral.

Oct. 2, 1896.

Oct. 3, at 6h. 45m. A.M. l.m.t., I set off $34^{\circ} 08'$ N. on the Lat. arc, $4^{\circ} 15'$ S. on the Decl. arc and determine a true meridian with the solar.

From Cor. L V. No. 2 which is a live oak 20 ins. dia. marked and witnessed as described by the Surveyor General, I run

N. $84 \frac{3}{4}^{\circ}$ W. on a random line and at

44 40 I arrive at a point 79 lks. S. of cor. L V. No. 1 and C. No. 6, previously described. Thence I run

S. $83^{\circ} 42'$ E. on a true line along S. side of Triunfo Canyon in oak timber and chaparral.

25 00 Top of spur trends N. 15° E. and descend.

26 15 Cross gulch 6 lks. wide course N. 12° E. and ascend.

29 75 Top of spur trends N. and descend.

32 50 Cross gulch 4 lks. wide course N. and ascend.

36 30 Top of spur trends N. 10° E. and descend.

40 00 Set a sandstone $18 \times 6 \times 9$ ins. 12 ins. in the ground marked $\frac{1}{2}$ M.

L V. on side of stone facing ranch and raised a mound of stone 2 ft. base $1\frac{1}{2}$ ft. high in ranch at right angle to line. Pits impracticable.

44 40 To cor. L V. No. 2.

Land mountainous. Soil 2nd and 3rd rate.

Timber oak. Dense undergrowth chaparral.

From cor. L V. No. 3, which is a sycamore 18 ins. dia. marked and witnessed as described by the Surveyor General, I run

N. 22° W. on a random line and at

50 50 I arrive at cor. L V. No. 2, previously described. Thence I run

S. 22° E. on a true line. Ascend.

11 22 Top of spur trends E. and descend.

18 33 Cross gulch 5 lks. wide course E. and ascend.

22 50 Top of spur trends N. 85° E. and descend.

26 40 Cross gulch 4 lks. wide course N. 80° E. and ascend.

30 00 Top of spur trends E. and descend.

33 46 Cross gulch 5 lks. wide course E. and ascend.

37 40 Top of spur trends E. and descend.

40 00 Set a sandstone $18 \times 8 \times 8$ ins. 12 ins. in the ground marked $\frac{1}{2}$ M.

L V. on side of stone facing ranch and raised a mound of stone 2 ft. base, $1\frac{1}{2}$ ft. high in ranch at right angle to line. Pits impracticable.

44 21 Cross road brs. NE. & SW.

46 45 Cross dry wash in Canada Lobo 20 lks. wide course N. 80° E. & ascend.

50 50 To cor. L V. No. 3.

Land mountainous. Soil 2nd and 3rd rate.

Timber Oak. Dense undergrowth of chaparral. Oct. 3, 1896.

Oct. 5, at 7h. 15m. A.M. l.m.t., I set off $34^{\circ} 07'$ N. on the Lat. arc, $5^{\circ} 03'$ S. on the Decl. arc and determine a true meridian with the solar at cor. L V. No. 4.

From cor. L V. No. 4, which is a sycamore 18 ins. dia. marked and witnessed as described by Surveyor General and on the E. bank of La Sierra Creek. There is so much variance in the course and length of this line, that I ran it twice, the first time I found the true bearing of the line and therefore run

N. 58° W. on a random line and at

57 23 I arrive at cor. L V. No. 3, previously described. Thence I run

S. 58° E. on a true line. Ascending.

4 82 Top of spur trends N. 15° E. and descend.

11 80 Cross gulch 10 lks. wide course N. and ascend.

24 00 Top of spur trends N. +40 ft. above gulch and descend.

27 32 Cross gulch 4 lks. wide course N. -50 ft. below spur and ascend.

40 00 Set a sandstone 24 x 10 x 10 ins. 18 ins. in the ground marked $\frac{1}{2}$ N. L V. on side of stone facing ranch and raised a mound of stone 2 ft. base, $1\frac{1}{2}$ ft. high in ranch at right angle to line. Pits impracticable. Descend.
 54 50 Enter flat brs. N. & S.
 56 00 Cross road brs. N. & S.
 56 57 Cross La Sierra Canyon 30 lks. wide course N. 20° E. and leave flat and ascend.
 57 23 To cor. L V. No. 4.
 Land mountainous. Soil 2nd and 3rd rate.
 Timber, oak and sycamore. Dense undergrowth, chaparral.

From cor. L V. No. 5, where I find a dead sycamore 30 ins. dia. lying on the ground, on the S. side of Triunfo Canyon, with marks destroyed, from which

A white oak $4\frac{1}{2}$ ins. dia. brs. S. 81 lks. dist. with marks nearly obliterated, I remark L V. 5 B T. and
 Set a sandstone 28 x 12 x 7 ins. 16 ins. in the ground marked L V. 5 on side of stone facing ranch, dug pits 24 x 18 x 12 ins. on line 4 ft. dist. and raised a mound of earth 4 ft. base 2 ft. high, in ranch at right angle to line, from which

A Sycamore 40 ins. dia. brs. N. 87 $\frac{1}{2}$ ° W. 12 lks. dist. marked L V. 5 B T. Thence I run

S. 50 $\frac{1}{2}$ ° W. on a random line and at

16 93 I arrive at cor. L V. No. 4. Thence

N. 50° E. on a true line, ascending.

1 00 Cross road, brs. N. 2° E. and S. 2° W.
 8 00 Top of rocky spur, trends N. 70° W. 100 ft. above cor. and descend.
 14 00 Enter flat on Triunfo Canyon, brs. E. & W.
 15 50 Cross road brs. E. & SW.
 16 93 To cor. L V. No. 5.

Land mountainous and rolling. Soil 2nd and 3rd rate.
 Timber, Oak. Dense undergrowth of same and chaparral.

From cor. L V. No. 6, which is

A Live Oak 32 ins. dia. marked and witnessed as described by the Surveyor General, I run

N. 7° W. on a random line and at
 30 75 I arrive at a point 17 lks. E. of L V. No. 5, cor. previously described. Thence I run

S. 7° 19' E. on a true line, ascending.

1 22 Cross road brs. N. 50° E. & S. 50° W.
 11 00 Top of rocky spur trends E. 150 ft. above cor. and descend.
 21 00 Cross low sag -100 ft. below spur and ascend.
 27 25 Top of spur trends S. 45° E. 60 ft. above sag and descend.
 28 00 Enter open land brs. E. & W.
 28 50 Cross gulch 10 lks. wide course E.
 30 75 To cor. L V. No. 6.

Land mountainous. Soil 2nd and 3rd rate.
 Timber Oak. Dense undergrowth same and chaparral.

From cor. L V. No. 7, which is a large granite rock 8 x 8 ft. 6 ft. above ground, marked and witnessed as described by Surveyor General, I run

N. 47 $\frac{3}{4}$ ° W. on a random line at
 35 90 I arrive at a point N. 42 $\frac{1}{2}$ ° E. 8.86 chs. dist. from cor. L V. No. 6, previously described. Thence I run

S. 61° 37' E. on a true line, over open land.

1 67 Enter dense chaparral and ascend.
 2 60 Top of ridge brs. NE. & SW. and descend.
 10 70 Enter dry wash of Triunfo Canyon.
 26 15 Leave dry wash of Triunfo Canyon course NE. and ascend.
 26 77 A Sycamore 36 ins. dia.
 27 42 Top of ascent and descend.
 37 48 To cor. L V. No. 7.
 Land mountainous. Soil 2nd and 3rd rate.
 Timber, oak and sycamore. Dense undergrowth of chaparral.
 Oct. 5, 1896.

Oct. 6th, at 7h. 00m. A.M. l.m.t., I set off 34° 06' N. on the Lat.
 arc, 5° 25' S. on the Decl. arc and determine a true meridian with
 the solar, at cor. L V. No. 8.
 From cor. L V. No. 8 where I find the old stump 6 ft. high, but
 marked and witnessed as described by the Surveyor General. I mark
 A Live Oak 12 ins. dia. brs. N. 44° E. 270 lks. dist.
 marked L V. No. 8 B T. I run

15 48 S. 81½° W. on a random line and at
 I arrive at cor. L V. No. 7 previously described. Thence I run
 N. 81½° E. on a true line, descend.
 50 Cross gulch 4 lks. wide course N. and ascend.
 10 00 Top of ridge brs. N. & S. 125 ft. above gulch and descend.
 15 45 To cor. L V. No. 8.
 Land mountainous. Soil 2nd and 3rd rate.
 Timber Oak. Dense undergrowth of same and chaparral.

From cor. L V. No. 9, which is a stump of a live oak 16 ins. dia.
 with marks nearly obliterated.
 The stump of the bearing tree standing, properly marked.
 A Live Oak 5 ins. dia. L V. No. 9 on side of tree facing ranch.
 From which bears a
 Sycamore 7 ins. dia. N. 68° W. 32 lks. dist.
 marked L V. 9 B T. Thence I run

33 95 N. 8½° W. on a random line and at
 I arrive at cor. L V. No. 8 previously described. Thence I run
 S. 8½° E. on a true line, ascend.
 4 00 Top of spur trends E. 30 ft. above cor. and descend.
 8 25 Cross low sag and ascend.
 21 55 Top of ridge brs. NW. & SE. 150 ft. above sag and descend.
 29 35 Cross canyon 25 lks. wide, course E. and ascend.
 33 95 To cor. L V. No. 9.
 Land mountainous. Soil 2nd and 3rd rate.
 Timber Oak. Dense undergrowth of same and chaparral.

From cor. L V. No. 10, where I find a white oak stump, badly decayed
 and marks nearly obliterated, I set a granite stone 16x12x10 ins.
 10 ins. in the ground marked L V. No. 10 on side of stone facing
 ranch and raised a mound of stone 2 ft. base, 1½ ft. high in ranch
 at right angle to line. Pits impracticable.
 This stone is set on W. side of the old stump and on the NW. slope
 of hill 50 ft. above creek.
 House bears N. 1° 30' W. 466 lks. dist.
 A White Oak 6 ins. dia. brs. N. 73½° W. 212 lks. dist.
 marked L V. 10 B T. Thence I run

37 54 S. 83° 52' W. on a random line and at
 I arrive at cor. L V. No. 9, previously described. Thence
 N. 83° 52' E. on a true line, descend.

11 94 Cross Triunfo Canyon 50 lks. wide, course S. 80° E.
 17 03 A Byemore 14 ins. dia.
 21 54 Cross Triunfo Canyon 50 lks. wide, course NE. and ascend.
 33 80 Leave chaparral, brs. NE. & SW.
 37 54 To cor. L V. No. 10.
 Land mountainous. Soil 2nd and 3rd rate.
 Timber Oak. Undergrowth same and chaparral.

From cor. L V. No. 11, where I find the Live Oak marked as described, but has been cut down and lying on the ground and the stump burned out, in its place I set a sandstone 12 x 12 x 8 ins. 8 ins. in the ground, marked L V. 11 on side of stone facing ranch and raised a mound of stone 2 ft. base, 1½ ft. high in ranch at right angle to line.
 Dug pits 30 x 24 x 12 ins. N. 5° 47' E. and 35° 47' W. 3 ft. dist. and E. of corner 7 ft. dist. from which
 A Live Oak 6 ins. dia. brs. S. 59° W. 07 lks. dist.
 marked L V. 11 B T. I run

45 40 S. 79½° W. on a random line and at
 I arrive at a point 11 lks. N. of cor. L V. No. 10 previously described. Thence I run

N. 79° 07' E. on a true line. Descend in open land.

4 70 Cross gulch 15 lks. wide course N. 40° E. and ascend.
 6 75 Enter chaparral brs. N. & S.
 9 00 Top of ridge brs. N. & S. 100 ft. above gulch and descend.
 11 40 Cross gulch 6 lks. wide, course N. 50 ft. below ridge and ascend.
 13 75 Top of rocky spur trends NW. 75 ft. above gulch and descend.
 21 20 Cross gulch 5 lks. wide course NW. 60 ft. below spur and ascend.
 30 25 Top of spur trends NW. 100 ft. above gulch and descend.
 38 50 Cross Triunfo Canyon 150 lks. wide, course SE.
 A stream of water in canyon 10 lks. wide & road brs. same & ascend.
 40 00 Set sandstone 24 x 10 x 10 ins. 18 ins. in the ground marked ½ M. L V. on side of stone facing ranch and raised a mound of stone 2 ft. base 1½ ft. high in ranch at right angle to line.
 Pits impracticable, from which
 A Willow 10 ins. dia. brs. S. 86° W. 35 lks. dist.
 marked ½ M. L V. B T.
 A Willow 10 ins. dia. brs. N. 65° E. 74 lks. dist.
 marked ½ M. L V. B T.

45 40 To cor. L V. No. 11.
 Land mountainous. Soil 2nd and 3rd rate.
 Timber Oak. Dense undergrowth of same and chaparral.

From cor. No. 12. L V, which is a granite stone 18 x 12 ins. 24 ins. above ground marked and witnessed as described by the Surveyor General, I run

81 05 S. 5 3/4° W. on a random line and at
 I arrive at a point 5 lks. E. of cor. No. 11 previously described.
 Thence I run

N. 5° 47' E. on a true line, ascending.

12 50 Top of spur trends W. 150 ft. above cor. and descend.
 18 50 A wire fence brs. N. 5° 45' E.
 22 62 Cross Media Creek 20 lks. wide, course NW. and ascend.
 24 00 Enter open hills.
 35 40 Cross road to Ira Brown's house brs. NE. & SW.
 40 00 Set a sandstone 16 x 12 x 10 ins. 10 ins. in the ground marked ½ M. L V. on side of stone facing ranch and raised a mound of stone 2 ft. base, 1½ ft. high in ranch at right angle to line.
 Pits impracticable, from which
 A White Oak 36 ins. dia. brs. S. 73½° W. 223 lks. dist.
 marked B T.
 44 00 Cross fence brs. NE. & SW. and leave open hills and ascend.

50 00 Top of spur trends N. 50° W. and descend.
61 00 Cross low sag and ascend.
62 00 Top of spur trends N. 40° W. and descend.
63 50 Small valley brs. NW. & SE. 40 ft. below spur.
80 00 Set a sandstone 18 x 16 x 4 ins. 12 ins. in the ground marked 1 M.
L V. on side of stone facing ranch and raised a mound of stone 2
ft. base, 1½ ft. high in ranch at right angle to line.
Pits impracticable.
81 05 To cor. L V. No. 12.
Land broken and mountainous. Soil 2nd and 3rd rate.
Timber Oak. Dense undergrowth of same and chaparral.

Oct. 6, 1896.

Oct. 7, at 7h. 00m. l.m.t., I set off 34° 08' N. on the Lat. arc,
5° 49' 3. on the Decl. arc and determine a true meridian with the
solar at cor. L V. No. 13.
From cor. L V. No. 13, which is a sandstone 13 x 8 ins. 5 ins. above
ground and witnessed as described by the Surveyor General, I run

153 00 S. 49° 30' W. on a random line and at
I arrive at a point N. 40½° W. 1.31 chs. dist. from cor. L V. No. 12
previously described. Thence I run

N. 49° E. on a true line. Descend.

3 25 Cross gulch 45° W. and ascend.
5 15 Top of rocky spur trends NW. and descend.
11 62 Cross branch of Media Canyon 25 lks. wide, course NW. and ascend.
26 25 Top of ridge brs. NE. & SW. and along same.
30 50 Leave ridge brs. SW. and descend.
38 47 Head of gulch course NW.
40 00 Set a sandstone 32 x 18 x 6 ins. 24 ins. in the ground marked ½ M.
L V. on side of stone facing ranch and raised a mound of stone 2
ft. base, 1½ ft. high in ranch at right angle to line.
Pits impracticable.
47 70 Cross Media Canyon 25 lks. wide, course S. 85° W. and ascend.
74 00 Top of ridge brs. NW. & SE. 200 ft. above canyon and descend.
77 25 Cross Media Canyon 10 lks. wide, course SE. 80 ft. below ridge, ascend.
80 00 Set a sandstone 30 x 10 x 8 ins. 21 ins. in the ground marked 1 M.
L V. on side of stone facing ranch and raised a mound of stone 2 ft.
base, 1½ ft. high in ranch at right angle to line. Pits Impracticable.
81 74 Top of ridge brs. NE. & SW. and descend.
86 50 Cross gulch 6 lks. wide, course N. 60 ft. below ridge and ascend.
88 10 Top of ridge brs. N. & S. and descend.
94 75 Cross gulch 6 lks. wide, course E. 60 ft. below ridge and ascend.
99 50 Top of spur trends E. and descend over rough and broken land on
W. side of canyon.
120 00 Set a limestone 30 x 16 x 6 ins. 22 ins. in the ground marked ½ M.
L V. on side of stone facing ranch and raised a mound of stone 2 ft.
base 1½ ft. high in ranch at right angle to line.
Pits impracticable, from which
A Live Oak 12 ins. dia. brs. S. 64° W. 130 lks. dist.
marked ½ M. L V. B T.
122 50 Enter cultivated ground, brs. NE. & SW.
130 00 John Enos house brs. S. 83° E. about 10 chs. dist.
Wm. Tweedy's house brs. S. 69½° E. about 18 chs. dist.
131 48 Cross road from Los Angeles to Ventura, brs. E. & W. and leave
cultivated ground.
132 00 Cross gulch 6 lks. wide course E. and ascend.
138 64 Top of spur trends SE. 75 ft. above gulch and descend.
153 00 To cor. L V. No. 13.
Land broken and mountainous. Soil 2nd and 3rd rate.
Timber Oak. Dense undergrowth same and chaparral.

Oct. 7, 1896.

Oct. 8, at 7h. 15m. A. M. l.m.t., I set off 34° 10' N. on the Lat. arc, 6° 11' S. on the Decl. arc and determine a true meridian at cor. L V. No. 14.

From cor. L V. No. 14 on the S. B. of Rancho Simi, which is a limestone 15 x 10 ins. 8 ins. above ground, set by County Surveyor Goldsworthy of Los Angeles, in place of a decayed post. The stone is properly marked and the bearing trees are standing marked as described by the Surveyor General. I run

S. 3° 07' W. on a random line and at

158 78 I arrive at a point 15 lks. E. of cor. L V. No. 13 previously described. Thence I run

N. 3° 04' E. on a true line, over open and hilly ground on the E. side of Canada Posita.

6 50 Huston's house brs. E. 1.69 chs. dist.
 18 50 Top of spur trends E. and descend.
 20 70 Cross gulch 10 lks. wide course SE. and ascend in chaparral.
 40 00 Set a sandstone 24 x 14 x 12 ins. 18 ins. in the ground marked $\frac{1}{2}$ M. L V. on side of stone facing ranch and raised a mound of stone 2 ft. base, $1\frac{1}{2}$ ft. high in ranch at right angle to line.
 Pits impracticable, about 200 ft. above cor. L V. No. 13.
 58 39 Top of ridge brs. E. & W. and descend.
 77 54 Cross wire fence brs. E. & W. in a gulch 6 lks. wide course W. and leave chaparral and enter open ground.
 80 00 Set a limestone 24 x 10 x 8 ins. 18 ins. in the ground marked 1 M. L V. on side of stone facing ranch and raised a mound of stone 2 ft. base, $1\frac{1}{2}$ ft. high in ranch at right angle to line.
 Pits impracticable, from which
 A Live Oak 8 ins. dia. brs. N. 15° W. 72 lks. dist.
 1 M. L V. B T.
 A White Oak 28 ins. dia. brs. S. 3° E. 193 lks. dist.
 marked 1 M. L V. B T.
 98 25 Top of spur trends W. 130 ft. above gulch and descend.
 105 70 Cross gulch 8 lks. wide, course W. & ascend.
 111 20 Top of spur trends W. along wire fence and enter cultivated ground brs. E. & W.
 120 00 Set a limestone 14 x 10 x 8 ins. 9 ins. in the ground marked $\frac{1}{2}$ M. L V. on side of stone facing ranch and raised a mound of stone 2 ft. base, $1\frac{1}{2}$ ft. high in ranch at right angle to line.
 Pits impracticable, from which
 A White Oak 18 ins. dia. brs. S. 32° W. 197 lks. dist.
 marked $\frac{1}{2}$ M. L V. B T.
 A White Oak 14 ins. dia. brs. N. 45° W. 235 lks. dist.
 marked $\frac{1}{2}$ M. L V. B T.
 122 00 Leave cultivated ground, brs. E.
 145 20 Brakes house brs. E. 248 lks. dist.
 158 78 To cor. L V. No. 14 on S. B. of Rancho Simi.
 Land hilly. Soil 2nd and 3rd rate.
 Timber Oak. Dense undergrowth same, chaparral.

October 8, 1896

Vol. 363-12

JAMES R. CLOVER