

25.9088

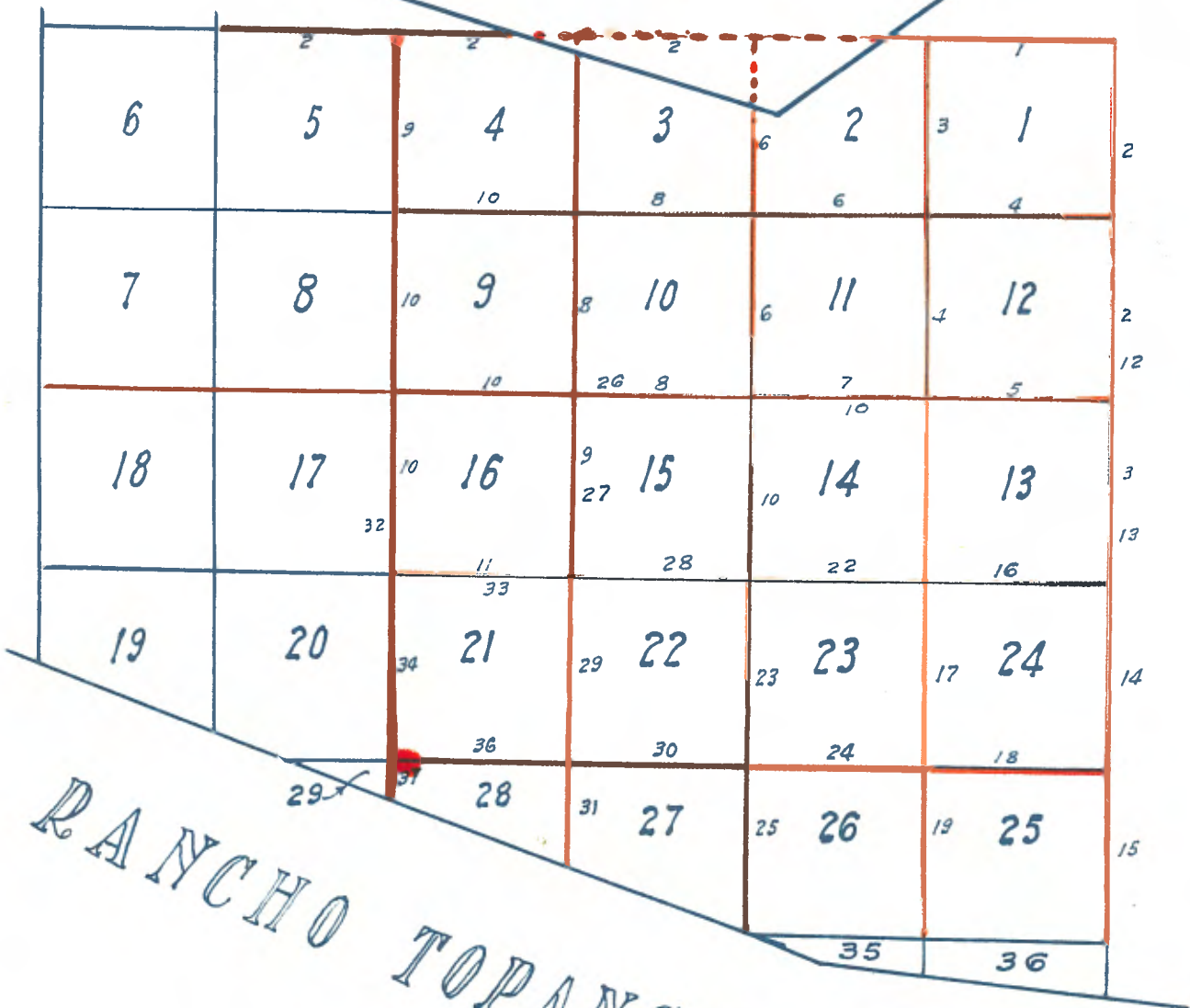
FIELD NOTES OF SURVEY OF A PORTION OF TISR19W

SURVEY BY - JAMES R. GLOVER DEP. SURVEYOR OCT. 1896

Pages 1-11 - Loaned to County Surveyor by W.F. Bixby
 Pages 12-36 - Copied from Photostat copies furnished by
 U.S. Bureau of Land Management - Survey
 Record Office Sacramento Cal.

TISR19W

RANCHO EL CONEJO



RANCHO TOPANGA MALIBU

Field Notes

of

Sections

1, 2, 3, 4, 9, 10, 11, 12, 13, 14, 15, 16.

T 1 S, R 19 W., S.B.B. & M

Copied from Notes loaned by W. F. Birby.

San Bernardino Base, through Range 18 West.

WEST between Sections 6 and 31.

80 00 Set a sandstone 30 x 12 x 10 ins. 22 ins. in the ground for corner to Townships 1 N, and 1 S., Ranges 18 and 19 West, marked with 6 notches on each edge, 80 on N face; raised mound of stone 2 feet base, 1 1/2 feet high N of corner. Pits impracticable. Land broken and mountainous. Soil 2nd and 3rd rate. Timber oak. Dense undergrowth of same and chaparral. Oct. 10, 1896.

Surveyed by Jas. R. Clever, Deputy Surveyor, Contract July 2, 1896.

San Bernardino Base, through Range 19 West.

3 45 WEST between sections 1 and 36. Descend thru dense chaparral. Cross branch of Canada Lobe, 15 lks. wide, course N. 60 feet below corner and ascend.
7 25 Top of rocky spur, trends north, 100 feet above canyon, descend. Grassette's house bears S 65 1/2° W.
12 50 Enter Canada Lobe, 50 lks. wide, course N 80° E. 130 ft below spur.
17 00 Leave Canada Lobe and ascend mountain. Difference between measurement of 40 chs. by 2 sets of chainmen is 6 lks.; positions of middle point
By 1st set 40 03 chs.
2nd 39 97 , mean of which is
40 00 Set a sandstone 36 x 18 x 12 ins. 27 ins. in the ground for 1/2 sec. corner, marked 80 1/2 on N. face and raise a mound of stone, 2 ft base 1 1/2 ft high, N of corner. Pits impracticable. 75 ft above canyon. Grassette's house bears S 50° E.
67 75 Top of ridge, brs NW & SE. 400 ft above corner. Descend. Difference between measurements of 80 chs. by two sets of chainmen is 16 lks.; position of middle point
By 1st set 79 92 chs.
2nd 80 08 , the mean of which is
80 00 Set a sandstone 22 x 16 x 12 ins. 16 ins. in the ground for corner to sections 1, 2, 35 & 36, marked 80 on N. 1 notch on E. 5 notches on W faces; raised a mound of stone 2 ft high 1 1/2 ft base, N of cor. Pits impracticable, 250 ft below ridge. Land broken and mountainous. Soil 3rd rate. Timber Oak. Dense undergrowth of chaparral.

WEST between Sections 2 and 35. Descend.

0 50 Cross branch of Lobe Canyon 10 lks. wide, course SE. Ascend.
6 34 Intersect Rancho El Conejo at point S. 55° 57' W. 18.95 chs. dist. from corner 1/2 M. C. and is a sandstone 12 x 10 x 10 ins. firmly set in the ground by me, under instructions dated Sept. 7, 1896, and set a sandstone 24 x 12 x 12 ins. 18 ins. in the ground, for closing cor. to fractional sections 2 and 35, marked 80 on N and 0 on E faces, and raised a mound of stone 2 ft base 1 1/2 ft high, E of corner. Pits impracticable.
Thence in Rancho El Conejo. Ascending.
9 05 Top of spur trends SE, 50 ft above CG corner and descend.
10 00 Head of Canyon, course SE. and ascend.
40 00 Set a blank post in Rancho for 1/2 section corner.
64 00 Top of ridge brs N & S. 300 ft above canyon and descend.
80 00 Set a blank post in Rancho for corner to sections 2, 3, 34 & 35. Corner set in gulch, course NW. Land broken and mountainous. Soil 2nd and 3rd rate. Dense undergrowth of chaparral.

WEST between sections 3 and 34. Ascend.
 5 10 Top of spur trends NW and descend.
 34 00 Cross gulch 15 lks wide, course N. 30° W. and ascend.
 40 00 Set a blank post in Rancho for $\frac{1}{4}$ section corner.
 70 00 Top of ridge bears NW & SE. and descend.
 80 00 Set a blank post in Rancho for corner to sections 3, 4, 33 and 34.
 Land broken and mountainous. Soil 3rd rate.
 Dense undergrowth of chaparral.

WEST between sections 4 and 33. Descend.
 28 40 Cross dry creek 100 lks. wide course NW and ascend.
 40 00 Set a blank post in Rancho for $\frac{1}{4}$ section corner.
 47 80 Top of spur trends west and descend.
 50 80 Intersect boundary of Rancho El Conejo at a point 13.44 chs. dist.
 S. 73° 05' E. from corner E of 2 N. and is a sandstone 24 x 12 x 10
 set firmly in the ground with a mound of stone, and set a sandstone
 26 x 12 x 11 ins. 19 ins. in the ground for closing corner to frac-
 tional sections 4 and 33, marked 80 on N., 05 on E. and raised a
 mound of stone 2 ft base $\frac{1}{2}$ ft high E. of corner. Pits impracticable.
 66 20 Cross Canada Lobe, 40 lks. wide course NE. and ascend.
 Difference between measurements of 50 chs. by two sets of chainmen
 is 15 lks., position of middle point.
 By 1st set 50.09 chs.

2nd 79.91 , the mean of which is
 60 00 Set a sandstone 22 x 12 x 10 ins. 16 ins. in the ground for corner
 to sections 4, 5, 32 and 33, marked 80 on N., with 4 notches on E
 and 2 notches on V faces, and raised a mound of stone 2 ft base $\frac{1}{2}$
 feet high N of corner. Pits impracticable.
 Land broken and mountainous. Soil 3rd rate.
 Timber, oak and sycamore in greed. Dense undergrowth of chaparral.

Surveyed by James R. Glover, Deputy Surveyor,
 Contract dated November 7, 1896.

WEST BOUNDARY, T 1 S., R 15 W., S.H.M.

From the corner to Townships 1 N and 1 S., Rs. 18 and 19 W. I run
 SOUTH between sections 1 and 6. Ascend.
 0 50 Top of ridge bears E & W. and descend.
 15 05 Cross gulch 7 lks. wide, course W 150 ft below ridge and ascend,
 18 15 A spring of good water, course W. bears W. 75 lks. distant.
 33 00 Top of rocky spur, trends W. 100 ft above spring, and descend.
 39 00 Cross gulch 7 lks. wide, course W. 80 ft below spur and ascend.
 40 00 Set a sandstone 22 x 15 x 8 ins. 16 ins. in the ground for $\frac{1}{4}$ sec.
 corner marked $\frac{1}{4}$ on W face and raised a mound of stone 2 ft base $\frac{1}{2}$
 ft high V of corner. Pits impracticable. From which
 A sycamore 5 ins. dia. hrs N. 6 $\frac{1}{2}$ ° W. 40 lks. dist.
 marked $\frac{1}{4}$ S BT. No other tree within limits.
 45 25 Top of rocky spur trends W. 150 ft above gulch, and descend.
 56 50 Cross Canyon, 50 lks. wide, course N. 20° W. 125 ft below spur. Ascend
 80 00 Set a sandstone 36 x 12 x 12 ins. 24 ins. in the ground for corner to
 sections 1, 6, 7 and 12, marked with 1 notch on N. and 5 notches on
 S. edges, and raised a mound of stone 2 ft base $\frac{1}{2}$ ft high W of Cor.
 Pits impracticable. 175 ft above canyon.
 Land mountainous. Soil 3rd rate. Timber Oak.
 Dense undergrowth of same and chaparral.

SOUTH between sections 7 and 12. Ascend.
 2 25 Top of ridge hrs N. 60° W. and S. 60° E. and descend, 25 ft above cor.
 7 50 Cross Gulch 10 lks. wide, course N. 60° W. 75 ft below ridge. Ascend.
 15 00 Top of divide of Santa Monica Mountains, hrs E & W. 200 ft above gulch
 and descend.
 34 70 Leave chaparral hrs E & W. and enter small valley, hrs. same.
 40 00 Set a sandstone 16 x 10 x 10 ins. 10 ins. in the ground for $\frac{1}{4}$ section
 corner marked $\frac{1}{4}$ on W face, and raised a mound of stone 2 ft base $\frac{1}{2}$
 ft high, W. of corner, from which
 A Live Oak 24 ins. dia. hrs. N. 55 $\frac{1}{2}$ ° E. 331 lks. distant,
 marked $\frac{1}{4}$ S BT.
 A Live Oak 12 ins. dia. hrs. N. 55 $\frac{1}{2}$ ° W. 163 lks. distant

marked $\frac{1}{2}$ S BT.

40 10
42 64
44 75
47 00
49 50
52 90
74 25
79 85
80 00

Cross road brs. E & W.
Polly's house brs West 223 chs. distant.
Enter field brs. E & W.
Leave field brs. E & W. and enter chaparral, brs same and ascend.
Top of spur trends west 75 ft above creek and descend.
Cross gulch 6 lks. wide, course W 100 ft below spur and ascend.
Top of spur trends W 100 ft above gulch and descend.
Cross branch of Canada Loma, 20 lks. wide, course W.
Set a sandstone 30 x 14 x 6 ins. 21 ins. in the ground for corner to sections 12, 13, 7 and 18, marked with 2 notches on N. and 4 notches on S edges and raised a mound of stone 2 ft base $1\frac{1}{2}$ ft high W of cor.
Pits impracticable. From which
A Live Oak 8 ins. dia. brs N. $90\frac{1}{2}^{\circ}$ E. 79 lks. dist.
marked T 1 S, R 18 W S 7 BT.
A Live Oak 16 ins. dia. brs S. 56° W. 113 lks. dist.
Marked T 1 S R 19 W S 13 BT.
A Live Oak 14 ins. dia. brs S $9\frac{3}{4}^{\circ}$ E. 60 lks. dist.
marked T 1 S R 18 W S 18 BT.
A Live Oak 7 ins. dia. brs. N. 75° W. 112 lks. dist.
marked T 1 S R 19 W S 12 BT.
Harris' house brs N. 62° W.
This corner is 400 ft below divide.
Land broken and mountainous. Soil 2nd and 3rd rate.
Timber, Oak. Dense undergrowth of same and chaparral.

9 50
32 00
37 00
40 00
52 30
60 00
78 85
80 00

SOUTH between Sections 12 and 18. Ascending.
Top of spur trends N. 85° W. 60 ft above corner and descend.
Cross gulch 8 lks. wide course N. 85° W. 300 ft below spur. Ascend.
Top of ridge brs. NE & SW. Descend.
Set a sandstone 24 x 14 x 6 ins. 18 ins. in the ground for $\frac{1}{2}$ section corner marked $\frac{1}{2}$ on W. face and raised a mound of stone 2 ft base $1\frac{1}{2}$ ft high W. of corner. Pits impracticable.
Cross canyon 15 lks. wide course West and ascend.
Newton's cabin brs. S. 81° E. about 3 chs. dist.
Top of spur trends N. 10° W. and descend.
Cross gulch 7 lks. wide course N. 10° W. and ascend.
Set a granite stone 18 x 14 x 12 ins. 12 ins. in the ground for cor. to sections 19, 18, 13 and 24, marked with 3 notches on N and S edges and raised a mound of stone 2 ft base $1\frac{1}{2}$ ft high W of corner.
Pits impracticable. From which
A Live Oak 9 ins. dia. brs N. 10° E. 92 lks. dist.
marked T 1 S R 18 W S 18 BT.
A Live Oak 9 ins. dia. brs. S 89° E. 112 lks. dist.
marked T 1 S R 18 W S 19 BT.
No other trees within limits. This cor. is about 200 ft above canyon.
Land mountainous. Soil 3rd rate. Timber Oak.
Dense undergrowth of buckthorn and chaparral. October 15, 1896.

Surveyed by James R. Glover, Deputy Surveyor,
Contract dated July 2, 1896.

SUBDIVISIONS OF T 1 S, R 19 W., S.B.M.

0 45
5 00
10 00
13 50
28 00
40 00

S. $0^{\circ} 01^{\circ}$ E. on a TRUE line between sections 1 and 2. Descend.
Gulch 10 lks. wide course S. 45° E. Ascend.
Top of spur 50 feet above gulch brs N. 60° E. & S. 60° W. Descend.
Canada Lobe 50 feet wide, 100 ft below top of spur, course N 80° E. Ascend.
Enter dense chaparral, brs E & W.
Top of rocky peak, 400 feet above Canada, brs E & W. Descend.
Set a sandstone 14 x 12 x 12 ins. 9 ins. in the ground for $\frac{1}{2}$ section corner, marked $\frac{1}{2}$ on W. face, and raised mound of stone 2 $\frac{1}{2}$ ft base $\frac{1}{2}$ high W. of corner. Pits impracticable. From which brs.
A sandstone boulder 6 $\frac{1}{2}$ x 3 x 2 $\frac{1}{2}$ ft above ground, N. 10 lks. distant which I marked $\frac{1}{2}$ SB on W. face.

42 30 Gulch 5 lks. wide, 100 ft below top of peak, course E. Ascend.
 65 00 Top of divide 300 ft above gulch, hrs. NW & SE. Descend.
 69 34 Canyon, 25 lks. wide 200 ft below top of divide, course SE. Ascend.
 72 50 Top of spur 150 ft above canyon, hrs E & W. Descend.
 80 00 Set a sandstone 24 x 12 x 10 ins. 18 ins. in the ground for corner
 to sections 1, 2, 11 and 12, marked with 5 notches on S and 1 notch
 on E edges, and raised a mound of stone 2 ft high $\frac{3}{4}$ ft base W of Cor.
 Pits impracticable. Land mountainous. Soil 3rd rate.
 Scattering Oak timber. Dense undergrowth of chaparral, 66.50 chs.
 Mountainous land 80 chs.

 EAST on a RANDOM line between sections 1 and 12.
 40 00 Set temporary $\frac{1}{2}$ section corner.
 80 09 Intersect E boundary of Township 42 lks. S of corner to sections 1,
 6, 7 and 12, which is a sandstone 12 x 12 x 12 ins. above ground,
 firmly set, marked with 1 notch on N and 5 notches on S edges, with
 a stone mound 2 ft base $\frac{1}{2}$ ft high W of corner. Thence I run
 S. 89° 42' W. on a TRUE line between sections 1 and 12.
 Ascend through brush.
 6 50 Top of ridge 75 feet above corner hrs NW & SE. Descend.
 17 75 Stream 15 lks. wide, 150 feet below top of ridge, course N. 25° W.
 Ascend.
 20 00 Top of spur 75 ft above stream, hrs N. 25° W. and S. 25° E. Descend.
 29 40 Gulch 10 lks. wide 40 ft below top of spur, course N. 15° W. Ascend.
 33 25 Top of spur 50 ft above gulch, hrs N. 15° W. & S. 15° E. Descend.
 40 04 $\frac{1}{2}$ Set a sandstone 24 x 18 x 8 ins. 18 ins. in the ground for $\frac{1}{2}$ section
 corner marked $\frac{1}{2}$ on N. face. From which hrs
 A Live Oak 14 ins. dia. S. 47° E. 46 lks. dist.
 marked $\frac{1}{2}$ S BT.
 A Live Oak 10 ins. dia. N. 6 $\frac{3}{4}$ ° W. 52 lks dist.
 marked $\frac{1}{2}$ S BT.
 44 00 Stream 20 lks. wide 100 ft below top of spur, course N. 60° W. Ascend.
 55 00 Enter live oak timber hrs N & S.
 60 00 Leave live oak timber hrs N & S. cross canyon 25 lks. wide course NW.
 and continue ascent.
 80 09 The corner to sections 1, 2, 11 and 12.
 Land mountainous. Soil 3rd rate. Timber Oak. Undergrowth of same
 and chaparral. Mountainous land 80 09 chs.

 S. 0° 01' E. on a TRUE line between sections 11 and 12.
 Descend through dense chaparral.
 9 44 Gulch 10 lks. wide, 60 ft below section corner, course E. Ascend.
 14 15 Ridge hrs N. 80° W. 70 ft above gulch. Descend.
 17 12 Gulch 10 lks. wide 30 ft below top of ridge, course E. Ascend.
 21 25 Top of ridge, 80 ft above gulch hrs. E & W. Descend.
 28 30 Leave dense chaparral and enter open land hrs. E & W.
 28 75 Gulch 5 lks. wide, 100 ft below top of ridge, course E. Ascend.
 31 00 Leave open land and enter dense brush hrs E & W.
 38 00 Top of ridge 200 ft above gulch, hrs NE & NW. Descend.
 40 00 Set a sandstone 16 x 12 x 12 ins. 11 ins. in the ground for $\frac{1}{2}$ section
 corner, marked $\frac{1}{2}$ on W face and raise a mound of stone covered with
 earth $\frac{3}{4}$ ft base $\frac{1}{2}$ ft high W of corner.
 41 41 Road, hrs NE & SW.
 43 75 Gulch 5 lks. wide, 160 ft below top of ridge, course SE. Ascend.
 51 50 Top of ridge 100 ft above gulch, hrs. NW & SE. Descend.
 60 52 Gulch 12 lks. wide, 80 ft below top of ridge, course NE. Ascend.
 68 00 Top of spur, 125 feet above gulch, hrs E & W. Descend.
 80 00 Set a sandstone 30 x 12 x 12 ins. 22 ins. in the ground for corner
 to sections 11, 12, 13 and 14, marked with 1 notch on E and 4 notches
 on S edges, and raised a mound of stone 2 ft base $\frac{1}{2}$ ft high W of Cor.
 Pits impracticable. Land mountainous. Soil 3rd rate. Scattering
 oak timber. Dense undergrowth of chaparral & buckthorn, 77.30 chs.
 Mountainous land 80 chs.

EAST on a RANDOM line between sections 12 and 13.

40 00 Set temporary $\frac{1}{2}$ section corner.
80 30 Intersect east boundary of Township 14 lks. S. of corner to sections 7, 12, 13 and 18, which is a sandstone 10 x 14 x 6 ins. firmly set, with 2 notches on N and 4 notches on S edges, and a stone mound, 2 ft base $1\frac{1}{2}$ ft high W. of corner previously set by me. Thence I run S. $59^{\circ} 54'$ W. on a TRUE line between sections 12 and 13. Descend.
3 40 Creek 10 lks. wide, course S. 45° W. Ascend.
5 00 Harris' house brs N. 49° W. about 12 chs distant.
15 35 Canyon 25 lks. wide course S. 10° E. Continue ascent.
16 10 Road brs N & S.
18 00 Top of spur, 60 ft above canyon, brs N. 30° W. & S. 30° E. Descend.
20 00 Low sag, 50 ft below top of spur, brs N. 30° W. & S. 30° E. Ascend.
23 50 Top of ridge, 100 ft above sag, brs N. 10° W. & S. 10° E. Descend.
26 50 Gulch 10 lks. wide, 100 ft below top of ridge, course S. 10° E. Ascend.
31 50 Top of ridge 90 ft above gulch brs N. 80° W. & S. 80° E. Descend.
35 50 Gulch 10 lks. wide, course S. Ascend.
39 10 Top of spur brs N & S. Descend.
40 15 Set a sandstone 16 x 10 x 10 ins. 11 ins. in the ground for $\frac{1}{2}$ section corner marked $\frac{1}{2}$ on N face, and raise a mound of stone $2\frac{1}{2}$ ft base, $1\frac{1}{2}$ ft high N of corner. Pits impracticable.
Corner set 75 ft above last gulch.
45 00 Gulch 10 lks. wide 50 ft below $\frac{1}{2}$ section corner, course S. 20° E. Ascend.
54 70 Top of ridge 110 ft above gulch, brs N. 30° W. & S. 30° E. Descend.
71 84 Canyon 20 lks. wide 200 ft below top of ridge, course S. Ascend.
80 30 The corner to sections 11, 12, 13 and 14.
Land mountainous. Soil 3rd rate. Scattering oak timber.
Dense undergrowth of chaparral. Mountainous land 80.30 chs.

9. $0^{\circ} 01'$ E. on a TRUE line between sections 13 and 14. Descend.
12 50 Enter cultivated land, brs NW & SE.
15 53 Creek 10 lks. wide 100 ft below sec cor. course S. 40° E. Ascend.
17 00 Leave cultivated land, enter dense chaparral brs NW & SE.
31 50 Top of ridge 160 ft above creek brs E & W. Descend.
39 91 Canyon 15 lks. wide, 50 ft below top of ridge, course E.
Leave chaparral and enter oak timber, brs E & W. Ascend.
40 00 A live oak 14 ins. dia. which I marked $\frac{1}{2}$ S on W face for $\frac{1}{2}$ section corner from which brs
A Live Oak 12 ins. dia. S. $54\frac{1}{2}^{\circ}$ E. 104 lks. dist.
marked $\frac{1}{2}$ S BT.
A Live Oak 6 ins. dia. S. $67\frac{1}{2}^{\circ}$ W 52 lks. dist.
marked $\frac{1}{2}$ S S BT.
65 00 Leave Oak timber brs. E & W. and continue ascent.
75 00 Top of spur 250 ft above canyon, brs E & W. Descend.
78 00 Low sag brs E & W. 30 ft below top of spur. Ascend.
80 00 Set a sandstone 22 x 12 x 4 ins. 16 ins. in the ground for corner to sections 13, 14, 23 and 24, marked with 1 notch on E and 3 notches on S edges, and raised a stone mound covered with earth $3\frac{1}{2}$ ft high west of corner. Land mountainous. Soil 3rd rate. Timber of oak.
Dense undergrowth of chaparral. Mountainous land 80 chs.

EAST on a RANDOM line between sections 13 and 24.
40 00 Set temporary $\frac{1}{2}$ section corner.
80 40 Intersect E boundary of Tp 24 lks. N. of corner to sections 13, 18, 19 and 24, which is a sandstone set firmly in the ground, marked with 3 notches on N & S. edges, with stone mound 2 ft base $1\frac{1}{2}$ ft high W of corner. Thence I run
N. $89^{\circ} 50'$ W. on a TRUE line between sections 13 and 24.
Ascend through dense chaparral.
10 00 Top of ridge 200 ft above section corner, brs N & S. Descend.
22 90 Canyon 50 lks. wide, 300 ft below top of ridge, course S. 10° W. Ascend
40 20 A sandstone boulder in place 18 x 11 x 2 feet above the ground, which I marked with + at exact corner point and $\frac{1}{2}$ on N face, and raised a mound of stone 2 ft base $1\frac{1}{2}$ ft high N of corner. Pits impracticable.
57 50 Top of ridge 300 ft above canyon brs NE & SW. Descend.

70 50 Canyon 15 lks. wide, 100 ft below top of ridge, course N. 70° E.
Ascend.
80 40 The corner to sections 13, 14, 23 and 24.
Land mountainous. Soil 3rd rate. Scattering Oak timber.
Dense undergrowth of chaparral. Mountainous land 80.40 chs.
December 7, 1896.

SOUTH on a blank line between sections 2 and 3.
Ascend through dense chaparral.
40 78 Intersect boundary line of Ho. El Conejo 9.05 chs. N. 73° 05' W.
from corner No. 5 on line which is a sandstone 15 x 9 x 6 ins. above
ground, marked and witnessed as described by the Surveyor General,
previously re-established by me and set a sandstone 3/4 x 18 x 12 ins.
27 ins. in the ground for closing corner to sections 2 and 3, marked
CC on S. with 2 grooves on E and 4 grooves on W faces, and raised a
mound of stone 2 ft base 1 1/2 ft high S. of corner. Pits impracticable.
Thence I run
S. 0° 01' E. on a TRUE line between sections 2 and 3, counting dis-
tances from corner to sections 2, 3, 34 and 35 on base line.
Continuing ascent through dense chaparral.
43 00 Top of ridge brs E & W. Descend.
55 25 Gulch 10 lks. wide, 10 ft below top of ridge, course W. Ascend.
66 20 Top of ridge 150 ft above gulch brs N. 65° E. and S. 65° W. Descend.
72 00 Gulch 8 lks. wide, 80 ft below top of ridge, course S. 80° W. Ascend.
79 00 Top of ridge 50 ft above gulch, brs N. 70° E. & S. 70° W. Descend.
80 00 Set a sandstone 16 x 12 x 12 ins. 11 ins. in the ground for corner
to sections 2, 3, 10 and 11, marked with 2 notches on E and 5 notches
on S edges, and raised a mound of stone 2 ft base 1 1/2 ft high W of cor.
Pits impracticable. Land mountainous. Soil 2nd and 3rd rate.
Scattering oak timber. Dense undergrowth of chaparral.
Mountainous land 80 chs.

EAST on a RANDOM line between sections 2 and 11.
40 00 Set temporary 1/2 section corner.
80 00 Intersect N & S line 40 lks. S of corner to sections 1, 2, 11 and 12.
Thence I run
S. 89° 43' W. on a TRUE line between sections 2 and 11.
Ascend through dense chaparral.
4 50 Top of rocky spur brs. N & S. Descend.
24 50 Canyon 15 lks. wide, 130 ft below top of spur, course SE and ascend.
33 70 Top of ridge 150 ft above canyon, brs N. 40° E. & S. 40° W. Descend.
40 00 Set a sandstone 3/4 x 12 x 5 ins. 26 ins. in the ground for 1/2 section
corner marked 1/2 on N face, and raised a mound of stone covered with
earth 2 ft base 1 1/2 ft high N of corner. Pits impracticable.
65 25 Canyon 15 lks. wide 200 ft below top of ridge, course SW. Ascend.
80 00 The corner to sections 2, 3, 10 and 11. Land mountainous.
Soil 3rd rate. Scattering oak timber.
Dense undergrowth of chaparral. Mountainous land 80 chs.

S. 0° 01' E. on a TRUE line between sections 10 and 11.
Descend through dense chaparral.
5 00 Canyon 25 lks. wide course S. 80° W. Ascend.
27 50 Top of high rocky mound 300 ft high, brs E and SW. Descend.
40 00 Set a sandstone 24 x 14 x 12 ins. 18 ins. in the ground for 1/2 section
corner, marked 1/2 on W face, and raised mound of stone covered with
earth, 2 ft high 3 1/2 ft base, W of corner.
47 46 Canyon 25 lks. wide 120 ft below 1/2 section corner, course S. 40° W.
Ascend.
51 50 Top of spur 60 ft above canyon, brs N. 60° E. & S. 60° W. Descend.
68 20 Road brs E & W.
69 35 Creek 15 lks. wide, 60 ft below top of spur, course W. Ascend.
73 50 Top of ridge 60 ft above canyon, brs E & W. Descend.
76 30 Low sag 40 ft below top of ridge, brs NE & SW. Ascend.
78 80 Top of ridge 75 ft above sag, brs NE & SW. Descend.