

FIELD NOTES

of

Section 7

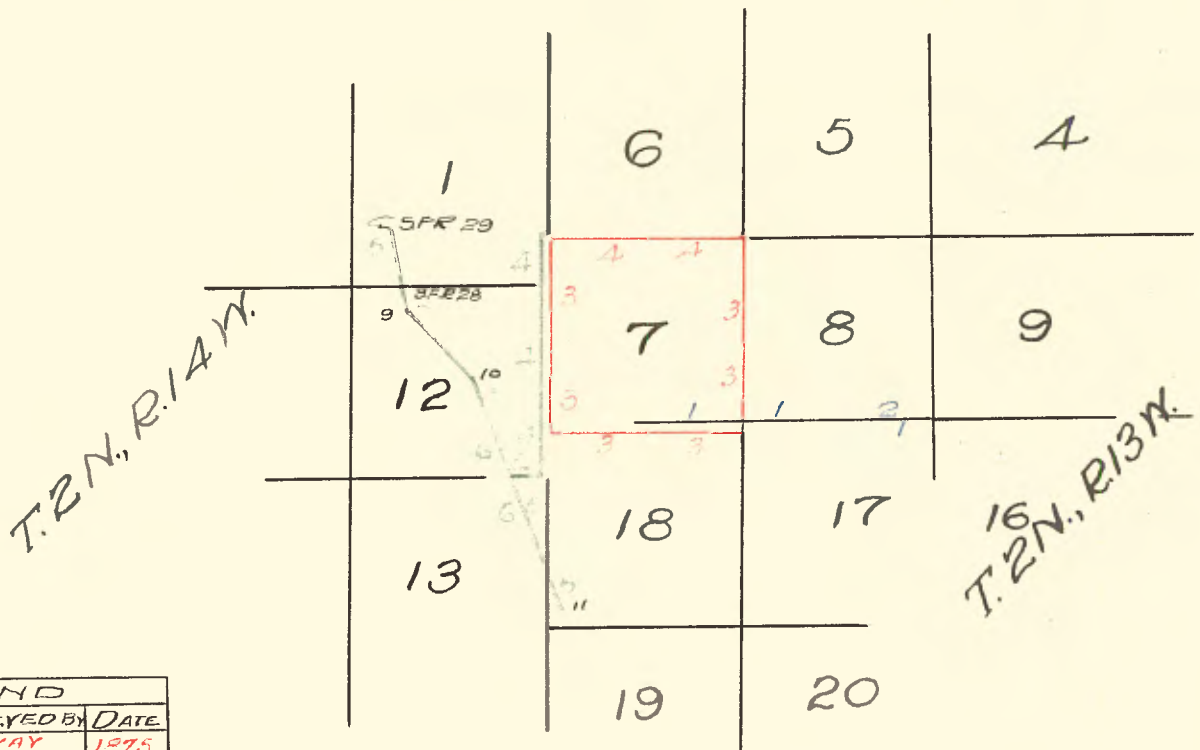
T. 2 N., R 13 W., S. B. M.

and

Fractional Section 12

T. 2 N., R 14 W., S. B. M.

Copied from Notes loaned by Mr. Friel



LEGEND		
COLOR	SURVEYED BY	DATE
RED	NORWAY	1875
BLUE	CUTTING	1896
GREEN	STILES	1898

Figures in color refer to pages

West on a RANDOM line between sections 9 and 16.

80 45 To point 25 links S. of corner to sections 8, 9, 16 and 17, where I found traces of old mound and pits, the post and bearing tree having been destroyed by fire. To re-mark corner I set a sandstone 20 x 10 x 8 ins. 15 ins. in the ground marked S G F R on N face with 4 notches on south and east edges; and raised a mound of stone 2 ft high, 3½ base W. of corner.

-----

From the corner to sections 8, 9, 16 and 17, I run

WEST on a RANDOM line between sections 8 and 17.

40 00 After diligent search failing to find old quarter section corner, I set temporary quarter section corner and continue west.

80 16 After diligent search failing to find old corner to sections 7, 8, 17 and 18, I set temporary section corner and run SOUTH 89° 43' W. on a RANDOM line between sections 7 and 18.

40 36 To old quarter section corner where I found a portion of an old earth mound, but no other trace of corner. To re-mark corner I set a sandstone 20 x 8 x 8 ins. 15 ins. in the ground marked S G F R ¼ on north face, from which bears

A Live Oak 10 ins. dia. N. 22° E. 40 lks. dist. which I marked ¼ S BT.

A Sycamore 4 ins. dia. S. 24½° W. 26 lks. dist. which I marked ¼ S BT.

Thence I run

4 36 N. 89° 43' E. on a TRUE line between sections 7 and 18. Descend. Gulch 5 lks. wide 200 feet below quarter section cor. course S. Ascend.

16 16 Top of spur 400 feet above gulch, brs. N. & S. Descend.

24 36 Gulch 10 lks. wide with running water 2 lks. wide, course S. 200 feet below top of spur. Ascend.

33 36 Top of spur brs. NW. & SE. 150 feet above gulch. Descend.

36 36 Head of gulch course NW. 100 feet below top of spur. Ascend.

40 12 Set a sandstone 26 x 20 x 12 ins. 19 ins. in the ground for corner to sections 7, 8, 17 and 18, marked S G F R on N face with 4 notches on S and 5 notches on E edges, and raised a stone mound 2 ft. high 4½ ft. base W of corner Pits impracticable.

Land mountainous. Soil 3rd rate. No timber.

Dense undergrowth of Chamisal. Mountainous land 40 36 chs.

September 18, 1896.

-----

September 19, at 7 h 00m, A. M., l.m.t., I set off 34° 16' N. on the Lat. arc, 1° 11' N. on the Decl. arc, and determine a true meridian with the solar at the corner to sections 7, 8, 17 and 18, just set by me.

EAST on a TRUE line between sections 8 and 17. Ascend.

4 66 Summit of ridge 300 ft. above last gulch, brs. NE. & SW. Descend.

29 66 Gulch 8 lks. wide 700 ft. below top of ridge, course S. Ascend.

39 46 Trail on top of spur, 500 ft. above gulch brs. NE. & SW. Descend.

40 20 Set a sandstone 20 x 10 x 10 ins. 15 ins. in the ground for ¼ section corner, marked S G F R ¼ on N. face; dug pits 18 x 18 x 12 ins. E & W. of stone, 3 ft. distant and raised an earth mound 1½ ft. high 3½ ft. base N. of corner, from which brs. Hayne's house and field S. 10° W. about 8 chs. distant.

54 16 Bottom of Hayne's canyon 50 lks. wide with stream 3 lks. wide, 500 ft. below top of spur, course SW. Ascend.

55 66 Set a square hollow iron post filled with cement, etc. 3 ft. long with sides 4 ins. wide at the top increasing to 12 ins. wide at the bottom, 12 ins. in the ground for witness corner to corner No. 25 on boundary of San Gabriel Forest Reservation, marked

S G F R 25

T 2 N S 10 on NE,

R 13 W S 15 on SE,

S 16 on SW, and

S 9 on NW faces; dug pits 36 x 36 x 12 ins. n & S of post 4 ft. distant and raised a mound of earth \_\_\_ ft. high 5 ft. base around post, alongside which set a granite stone 30 x 23 x 11 ins. 21 ins. in the ground, marked W C 104.65 chs. on E. face.

72 16

74 66

79 66

80 40

Top of spur 100 ft. above canyon, brs NE & SW. Descend.

Gulch 5 lks. wide 90 ft. below top of spur, course S. Ascend.

Top of spur 250 ft. above gulch, brs N. & S. Descend

The corner to sections 8, 9, 16 and 17.

Land mountainous. Soil 3rd rate. No timber.

Dense undergrowth of Chamisal. Mountainous land 80 16 chs.

-----

Surveyed by Lewis Cutting, Deputy Surveyor.  
Contract dated January 24, 1896,

4th Mile North.

NORTH on West boundary of Section 18.

Var.  $14\frac{1}{4}^{\circ}$  E.

- 80 00 Set a Sycamore post 4 x 4,  $3\frac{1}{2}$  ft. long in a mound of rocks as instructed, on S bank of deep Canada for corner to sections 7, 12, 13, and 18, from which  
A Live Oak tree 12 ins. dia. brs. N.  $20^{\circ}$  E. 59 lks. dist.  
Land 1st rate, grazing.

September 8, 1875

5th Mile North.

NORTH on West boundary of Section 7.

Var.  $14\frac{1}{4}^{\circ}$  E.

- 0.50 Cross gulch 75 lks. wide course W. Ascend along W slope of ridge.  
15 58 Descend.  
22 25 Cross ravine 50 lks. wide course W. Ascend.  
26 44 Summit of ridge course E. & W. Descend.  
30 00 Cross ravine course W. Ascend.  
35 20 Summit of spur course E. & W. Descend.  
40 00 Set an oak post 3 x 3, 3 ft. long in a mound of rocks as instructed for  $\frac{1}{4}$  section corner.  
63 00 Enter the Tujunga Canada course SW. & NE.  
80 00 Set an alder post 4 x 4,  $3\frac{1}{2}$  ft. long in a mound of rocks as instructed for corner to sections 1, 6, 7 and 12.  
Land 1st and 2nd rate. Very brushy and broken.

NORTH between sections 17 and 18.

Var.  $14\frac{1}{4}^{\circ}$  E.

- 80 00 Set a granite rock 12 x 10 x 20 ins. in a mound of rocks as instructed for corner to sections 7, 8, 17 and 18.  
Land, rough hills, 2nd rate. Bee ranches.

WEST on a RANDOM line between sections 7 and 18.

Var.  $14\frac{1}{4}^{\circ}$  E.

- 16 00 Cross gulch near head 100 lks. wide course S. Ascend.  
25 00 Summit of spur bearing NE. & SW. Descend.  
40 00 Set post for  $\frac{1}{4}$  section corner.  
43 00 Cross gulch near head, course NW., thence along S. side of same  
78 86 Intersect the western boundary of Township 40 lks. N. of the corner to sections 7 and 18. Whence I run

N.  $89^{\circ} 43'$  E. on a TRUE line between sections 7 and 18.

Var.  $14\frac{1}{4}^{\circ}$  E.

- 38 86 Set an oak post 3 x 3, 3 ft. long in a mound of earth and pits as instructed, near head of gulch for  $\frac{1}{4}$  section corner.  
78 86 The corner to sections 7, 8, 17 and 18.  
Land, rolling mountains, 2nd rate. Timber scattering.

September 17, 1875

NORTH between sections 7 and 8.

Var.  $14\frac{1}{4}^{\circ}$  E.

- 40 00 Ascending.  
Point for  $\frac{1}{4}$  section corner falling on steep side hill not a suitable place to build a mound.  
44 50 Set an oak post 3 x 3, 3 ft. long in a mound of rocks as instructed on a summit of a high ridge bearing E. & W. for witness to  $\frac{1}{4}$  sec. cor.  
47 00 Descending.  
80 00 Set a sand rock 10 x 12 x 20 ins. in a mound of rocks as instructed on side hill facing S. E. for corner to sections 5, 6, 7 and 8.  
Land, high mountains, 2nd and 3rd rate.  
Timber, oak and redwood poles.

WEST on a RANDOM line between sections 6 and 7. Var.  $14\frac{1}{2}^{\circ}$  E.

Along N. slope of high mountains.

40 00 Set post for temporary  $\frac{1}{4}$  section corner.  
79 05 Intersect the western boundary of Tp. 24 lks. N. of the corner to sections 6 and 7. Whence I run

N.  $89^{\circ} 50'$  E. on a TRUE line between sections 6 and 7.

39 05 Set a sandrock 6 x 8 x 24 ins. in a mound of rocks as instructed for  $\frac{1}{4}$  section corner, whence a large sandrock 12 ft. cube bears N.  $18^{\circ}$  E. 100 lks. distant.

79 05 The corner to sections 5, 6, 7 and 8.  
Land, over rough mountains.  
Timber, scattering oak and spruce or fir, 2nd quality.

W. H. Norway, Deputy Surveyor.  
Contract of July 31, 1875.

-----  
EAST BOUNDARY

T 2 N., R 14 W., S. B. M.

April 22 at 10 h. 00 m. AM. l.m.t., I set off  $34^{\circ} 17'$  on the Lat. arc, and  $12^{\circ} 04'$  N. on the Decl arc, and determine a true meridian with the solar at the closing corner between sections 1 and 12. which is also corner No. 27 of San Gabriel Forest Reserve, marked and witnessed as described by the Surveyor General. Thence I run

S.  $1^{\circ} 55'$  W. on RANGE line over broken ground and through brush.

23 05 Quarter section corner marked and witnessed as described by the Surveyor General. I change the mark to E. side, establishing this as the  $\frac{1}{4}$  section corner for section 7 only.

63 44 The corner to sections 7 and 18, marked and witnessed as described by the Surveyor General. I destroy marks on post and on sycamore bearing tree referred to sections 12 and 13. From this corner I run

68 00 SOUTH along range line, counting distance from starting point.  
80 00 A point from which a house bears west about 5 chs. distant.  
Set a redwood post 4 ins. sq. 3 ft. long, 24 ins. in the ground for corner to sections 12 and 13, marked

T 2 N S 13 on SW.

R 14 W S 12 on NW faces, with 2 notches on W and 4 notches on S edges, from which

A boulder 24 ins. sq. 6 ins. above ground bears

S  $15^{\circ}$  West 32 lks. dist, marked

S 13 BR.

Raise a mound of rocks 3 ft. base 2 ft. high W. of corner.  
Pits impracticable. Land mountainous. Soil 4th rate.  
Mountainous land 80 chs.

-----  
May 21, at 8h 00m. A.M., l.m.t., I set off  $34^{\circ} 17'$  on the Lat. arc, and  $14^{\circ} 56'$  N. on the Decl arc, and determine a true meridian at the corner to sections 1 and 12 on range line, an iron post as heretofore described. Thence I run

NORTH on a RANDOM line on EAST boundary of Section 1.

18 24 To a point 60 lks. W. of corner to sections 6 and 7, T 2 N, R 13 W. an elder post in mound of rocks, marked as described by the Surveyor General. Thence I run

S.  $1^{\circ} 55'$  W. on TRUE line on EAST boundary of Section 1.

18 25 To corner to sections 1 and 12.  
Land mountainous and covered with brush. Mountainous land 18 24 chs.

-----  
= 4 =  
-----

T 2 N., R 14 W., S.B.M.

From the corner to Sections 12 and 13 on Range line

WEST on TRUE line between sections 12 and 13. Descend through brush.

- 16 07 Intersect easterly boundary of Rancho Tujunga at a point from which T  $\frac{1}{2}$  M. bears N. 21° 20' W. 260 lks. distant.  
Set a rock 18 x 12 x 6 ins. 12 ins. in the ground for closing corner to fractional sections 12 and 13, marked  
CC on E. T on W, and 4 grooves on 8 faces; dig pits crosswise on each line, 30 x 24 x 12 ins. N. 21° 20' W. 3 ft.  
24 x 18 x 12 ins. E. of rock 7 feet.  
Raise a mound of rocks 5 ft. base 3 ft. high E. of corner.  
Land, sloping. Soil 4th rate.  
Through dense undergrowth 16.07 chs. April 16, 1902.

-----  
Wm. Sickler, Deputy Surveyor,  
Contract of April 22, 1901.  
-----

T 2 N., R 14 W., S.B.M.

April 25, at 2h 00m., PM., l.m.t., I set off 34° 17' on the Lat. arc, 13° 07' N. on the Decl arc, and determine a true meridian with the solar at corner No. 8 Rancho Tujunga, which is also corner No. 29 of San Gabriel Forest Reservation, marked and witnessed as described by the Surveyor General. From this corner a flag on corner No. 9, is visible and bears S. 10° 45' E. which is also the true line along ranch boundary.

- 17 78 Corner No. 28 of San Gabriel Forest Reserve, which is also closing corner between sections 1 and 12, marked and witnessed as described by the Surveyor General.  
33 18 Corner No. 9, Rancho Tujunga, a redwood post 4 ins. sq. set firmly in the ground, marked T 9 on SW face a mound of rocks 4½ ft. base 2½ ft. high SW of corner.  
Land nearly level. Soil 2nd rate. April 25, 1902

-----  
From corner No. 9 I run

- 37 00 S. 47° 30' E. on RANDOM line along ranch boundary.  
A point 41 lks. N. 42° 30' E. of corner No. 10, a redwood post 4 ins. sq. set firmly in the ground, marked T 10 on SW face, dig pits 18 x 18 x 12 ins. on line each side of post 3 ft. distant, raise a mound of rocks 2 ft. base 1½ ft. high SW of corner. Thence I run  
N. 46° 52' W. on TRUE LINE ALONG RANCH BOUNDARY. Over broken hills  
19 00 Top of spur, descending SW.  
23 00 A road, course E. & W. and enter field.  
37 00 Corner No. 9.  
Land broken. Soil 3rd rate.

-----  
From corner No. 10.

- 96 00 S. 22° E. on RANDOM line along ranch boundary, setting a temporary corner at 40 chs.  
A point 112 lks. N. 68° E. of corner No. 11.  
A redwood post 4 ins. sq. set firmly in the ground, marked T 11 on SW face, dig pits 18 x 18 x 12 ins. on line each side of post 3 ft. distant, raise a mound of rocks 3 ft. base 2 ft. high SW. of corner.  
Thence I run  
N. 21° 20' W. on TRUE line. Over brushy mesa.

- 8 80 Intersect range line at a point from which quarter section corner of section 18 bears North 18 chs. distant.

Set an alder post 3 ft. long 3 ins. sq. 24 ins. in the ground for closing corner to fractional sections 13 and 18, marked CO T 2 N R 13 W S 18 on NE. R 14 W S 13 on NW and T on SW faces.

NOTE: It is necessary to set this post diagonally with the line to get the markings in proper places.

Raise a mound of rocks 3 ft. base 2 ft. high N. of corner.

56 00 Set a rock 14 x 10 x 8 ins. 10 ins. in ground marked T  $\frac{1}{2}$  M on SW face, dig pits 18 x 18 x 12 ins. on line each side of rock, 3 ft. distant. Raise a mound of rock 2 ft. base 1  $\frac{1}{2}$  ft. high SW of corner.

Enter broken hills.

96 00 Corner No. 10.

Land, broken hills and brushy mesa.

Soil 3rd rate.

-----  
Wm. A. Sickler, U. S. Deputy Surveyor.  
Contract of April 22, 1901.