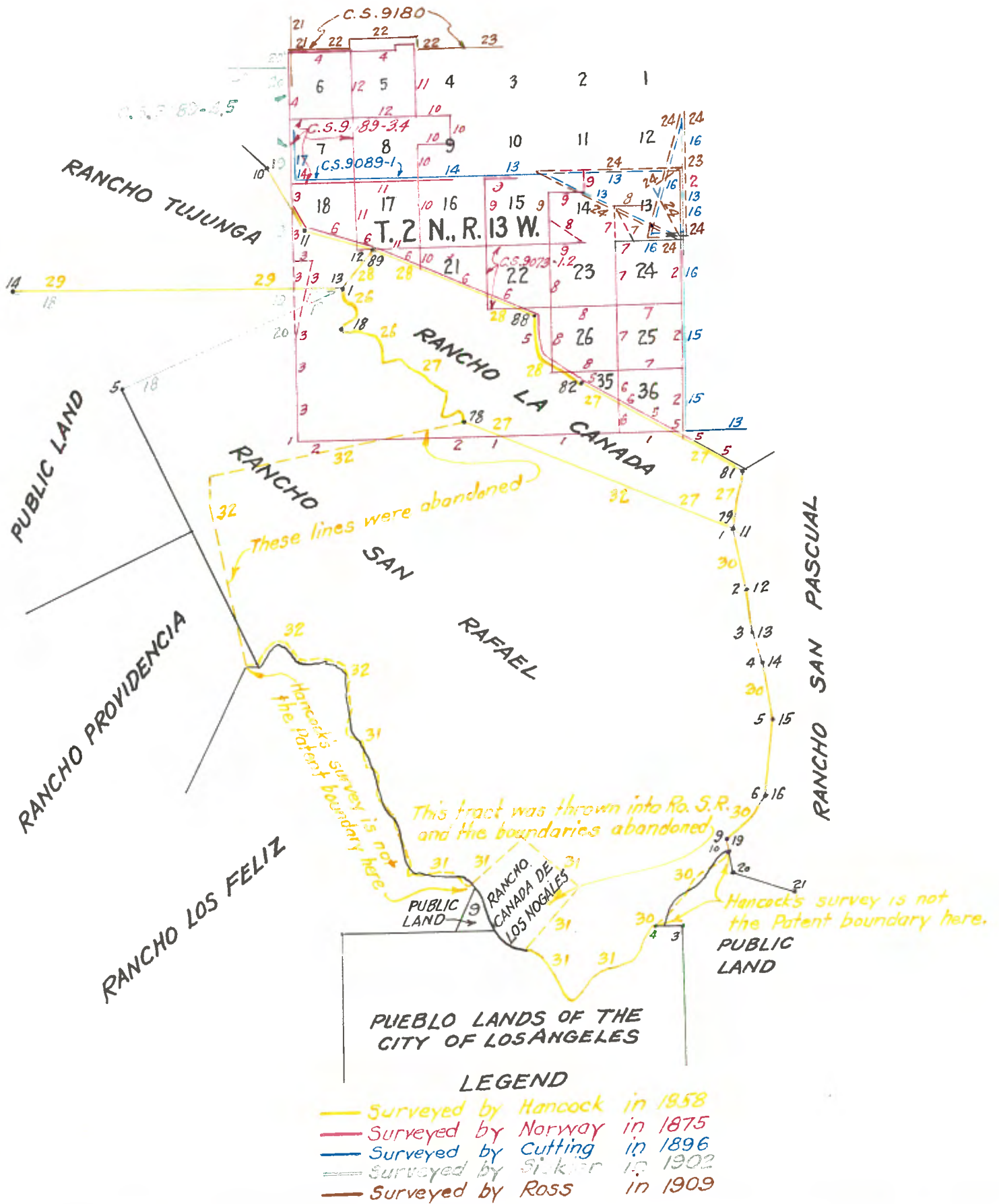


FIELD NOTES

T. 2 N., R. 13 W., S. B. 1.

and

Parish of Santa Fe, Rancho San Rafael (Hancock).



T 1 N, R 14 W, S. B. M.

- 80 00 EAST on NORTH boundary of Section 1. Var. 14 1/4° E  
 Set Post 4 x 4 ins. ~~3 1/2~~ 3 1/2 ft. long in large rock mound, as per instructions, for corner to Tps. 1 and 2 N. Rs 13 and 14 W. Land rolling hills, Soil 1st and 2nd rate.
- T 1 N, R 13 W, S. B. M.
- 80 00 NORTH on EAST boundary of Section 1. Var. 14 1/4° E  
 Set oak post 4 x 4 ins. 3 1/2 ft. long in rock mound, as per instructions for corner to Tps. 1 and 2 N., Rs 12 and 13 W. Land level. Soil 2nd rate covered with low chemical brush, very deep. September 6, 1875.
- 
- From corner to Tps. 1 and 2 N., Rs 13 and 14 W., I run EAST on RANDOM line on NORTH boundary Sections 6, 5, 4, 3, 2 and 1, and at 5 miles 78.43 chs. to a point 2.20 chs. S. of corner to Tps. 1 and 2 N., Rs 12 and 13 W. Therefore the correction will be 1.58 chs. W. and 37 lks. N. per mile, from the corner to Tps. 1 and 2 N., Rs 12 and 13 W., I run S. 89°44' W. on TRUE line on NORTH boundary of Section 1. Var. 14 1/4° E.
- 27 85 Cross road NW & SE.  
 40 00 Set oak post 3 x 3 ins. 3 ft. long in rock mound and pits, as per instructions, for 1/4 section corner.  
 80 00 Set oak post 4 x 4 ins. 3 1/2 ft. long in mound and pits, as per instructions, for corner to Sections 1, 2, 35 and 36, from which bears a Live Oak 12 ins. dia. S. 30 1/2° W. 1.82 chs. distant. Land level. Canada covered with low chemise brush. Soil 2nd rate.
- 
- S. 89°44' W. on TRUE line on NORTH BOUNDARY Section 2. Var. 14 1/4° E.  
 19 50 Cross dry gulch 5 lks. wide course S.  
 40 00 Set oak post 3 x 3 ins. 3 1/2 ft. long in rock mound, as per instructions, for 1/4 section corner.  
 80 00 Set oak post 4 x 4 ins. 3 ft. long in mound and pits as per instructions, for corner to Sections 2, 3, 34 and 35. Land level, canada covered with low brush. Soil mostly 2nd rate.
- 
- S. 89°44' W. on TRUE line on NORTH boundary of Section 3. Var. 14 1/4° E.  
 40 00 Set oak post 3 x 3 ins. 3 ft. long in a mound and pits as per instructions, for 1/4 section corner.  
 42 50 Cross dry gulch 100 lks. wide, course SW.  
 80.00 Set redwood post 4 x 4 ins. 3 1/2 ft. long in mound and pits, as per instructions, for corner to Sections 3, 4, 33 and 34. Land level, covered with low brush in places, Soil 2nd rate grazing.
- 
- S. 89° 44' W. on TRUE line on NORTH boundary Section 4. Var. 14 1/2° E.  
 4 50 Cross dry bed of creek 1 lk. wide course SE.  
 18 00 Leave level canada and ascent, N & S.  
 40 00 Set oak post 3 x 3 ins. 3 ft. long in mound of rocks as per instructions on side hill facing E, for 1/4 section corner.  
 49 50 Summit of Spur N&S. Descend.  
 80 00 Set oak post 4 x 4 ins. 3 1/2 ft. long in rock mound on side hill facing S, as per instruction, for corner to Sections 4, 5, 32 and 33. Land mostly rolling hills, Soil 2nd rate.
- 
- S. 89°44' W. on TRUE line on NORTH boundary of Section 5. Var. 14 1/4° E.  
 12 50 Cross near head of ravine, course SE. Ascend.  
 38 00 Summit of spur N & S. Descend.  
 40 00 Set redwood post 3 x 3 ins. 3 ft. long in rock mound, as per instructions, for 1/4 section corner, from which bears Redwood 6 ins. dia. S. 14 1/2° E 21 lks. distant

55 00 Cross dry gulch 5 lks. wide course S. Along on S slope of same.  
80 00 Set redwood post 4 x 4 ins. 3½ ft. long in rock mound as per instructions, for corner to Sections 5, 6, 31 and 32.  
Land over rolling hills. Soil 1st and 2nd rate.

-----

40 00 S. 89°44' W. on TRUE line on NORTH boundary Section 6. Var 14 1/4° E.  
Set redwood post 3 x 3 ins. 3 ft. long in rock mound and pits, as per instructions, on S slope of hill for 1/4 section corner, from which  
brs.

75 42 A Redwood 6 ins. dia. N. 82° W. 20 lks. distant.  
The corner to Tps. 1 and 2 N., Rs. 13 and 14 W.  
Land along south slope of mountains mostly 2nd rate, covered with low brush in places, Some good grazing. September 7, 1875.

-----

From corner to Tps. 1 and 2 N. Rs. 12 and 13 W., I run  
NORTH on EAST boundary of Section 36. Var. 14 1/4° E.  
Ascending.

31 60 Summit of spur E & W. Descend.  
33 50 Cross small ravine, course E. Ascend.  
37 00 Summit of spur E & W  
40 00 Set oak post 3 x 3 ins. 3 ft. long, in rock mound on side hill facing N, as per instructions, for ¼ section corner.  
54 30 Cross ravine 50 lks. wide course SE. Ascend over brushy hills.  
65 00 Summit of spur E & W. Descend.  
80 00 Set elder post 4 x 4 ins. 3½ ft. long in rock mound, as per instructions on steep side hill facing N, for corner to Sections 25, 30, 31, 36. Land, part in valley level, 2nd rate; north one half brushy, 2nd rate.

-----

NORTH on EAST boundary of Section 25. Var. 14 1/4° E.

13 00 Cross deep canada 100 lks. wide course E. Ascend.  
40 00 Set redwood post 3 x 3 ins. 3 ft. long in rock mound, as per instructions, on summit of high ridge, course E&W. for ¼ section cor.  
59 50 Cross deep gulch 50 lks. wide course E. Ascend.  
74 00 Summit of spur E & W. Descend.  
80 00 Point falling in deep gulch not suitable place to build monument.  
Set oak post 4 x 4 ins. 3½ ft. long in mound and pits, as per instructions, 100 lks. North, for witness corner to Sections 19, 24, 25 and 30. Land very rough, 2nd and 3rd rate. Good bee range.

-----

NORTH on EAST boundary Section 24. Var. 14 1/4° E.

1 00 Witness post on N bank of ravine, course SE. Ascend.  
10 00 Summit of spur, course SE & NW. Descend.  
18 75 Cross gulch 50 lks. wide course SE. Ascend.  
37 00 Summit of spur course NE & SW. Descend.  
40 00 Set oak post 3 x 3 ins. 3 ft. long in rock mound as per instructions for 1/4 section corner.  
56 50 Cross ravine 100 lks. wide course SE. Ascend on E side of same.  
76 50 Cross same ravine 100 lks. wide course SW.  
80 00 Set oak post 4 x 4 ins. 3½ ft. long in rock mound, as per instructions for corner to Sections 13, 18, 19 and 24.  
Land very rough, mostly 3rd rate. Good bee range.

-----

NORTH on EAST boundary Section 13. Var. 14 1/4° E.

16 50 Cross gulch 50 lks. wide course SE. Ascending W slope of hill.  
40 00 Set oak post 3 x 3 ins. 3 ft. long in rock mound, as per instructions for 1/4 section corner.  
60 00 Cross ravine 100 lks. wide course SW.  
80 00 Set redwood post 4 x 4 ins. 3½ ft. long in rock mound, as per instructions, on side hill facing W. for corner to Sections 7, 12, 13 & 18  
Land very rough and broken, 2nd and 3rd rate. Timber in canadas.

-----

I find it impracticable to proceed further on this line on account of the roughness and worthlessness of the country.  
September 8, 1875.

-----

From the corner to Tps. 1 and 2 N., Rn 13 and 14 W., I run NORTH between Ranges 13 and 14.  
NORTH on WEST boundary of Sec. 31. Var. 14 1/4° E.  
Ascending.

- 20 00 Summit of spur E & W.  
40 00 Set sand rock 6 x 10 x 16 ins. in mound as per instructions for 1/4 sec cor on S side of deep gulch, from which bears a Live Oak 10 ins. dia. S. 22 1/2° W. 20 lks. distant.  
40 50 Cross short deep gulch 50 lks. wide course SW ascend.  
61 00 Summit of spur course E & W  
80 00 Set redwood post 4 x 4 ins. 3 1/2 ft. long in rock mound as per instructions, for cor to Secs. 25, 30, 31 and 36.  
Land rolling 2nd rate soil.

NORTH on WEST boundary of Sec. 30. Var. 14 1/4° E.

- 30 00 Cross deep gulch 50 lks. wide course SW.  
40 00 Point for 1/4 sec cor falling on steep side hill, not a suitable place to build mound, so continue north and at  
42 50 Set sand rock 10x10x20 ins. in mound as per instructions for 1/4 sec. cor.  
46 50 Summit of ridge E & W  
75 00 Cross gulch 75 lks. wide course SW. Ascend.  
80 00 Set Sycamore post 4x4 ins. 3 1/2 ft. long in rock mound as per instructions on steep side hill facing S for cor. to Secs. 19, 24, 25, 30.  
Land rough, good grazing in places. Mostly 2nd rate soil.  
Finding the ground too rough to measure further on this line, and to obtain the distance between Ranges 13 and 14, I return S. 33.50 chs. to summit of high ridge, being 46.50 chs. N. of cor. to Secs. 25, 30, 31 and 36. Not being able to run a base at this point, I leave a flag and proceed N to a point in valley and on the line between Ranges 13 and 14, and run base E of 10.00 chs. to a point where my flag bears S. 5° 55' W which would give by calculation a distance 96.49 chs. to the flag; from which take 33.50 chs. the distance from the corner to Secs. 19, 24, 25 and 30 (S to flag, makes 62.99 chs. N of the corner to Secs. 19, 24, 25 and 30.  
Being unable to return to establish the 1/4 sec cor I set oak post 3x3 ins. 3 ft. long in rock mound at this point and continue in third mile North.

NORTH on WEST boundary of Sec. 19. Var. 14 1/4° E.

- 80 00 Set redwood post 4x4 ins. 3 1/2 ft. long in rock mound, as per instructions, for cor to Secs. 18, 19, 13 and 24.  
Land, part in mountains very rough, 3rd rate; part in valley 2nd rate, with low brush.

NORTH on WEST boundary of Sec. 18. Var. 14 1/4° E.

- 40 00 Set elder post 3x3 ins. 3 ft. long in rock mound, as per instructions for 1/4 sec. cor.  
63 00 Cross dry bed of creek 50 lks wide. Ascend.  
80 00 Set sycamore post 4x4 ins. 3 1/2 ft. long in rock mound as per instructions on S. bank of deep canada, for cor. to Secs. 7, 12, 13 and 18 from which bears an Oak 12 ins. dia. N. 20° E. 59 lks. distant.  
Land 1st rate, grazing. September 8, 1875.

NORTH on WEST boundary of Sec. 7. Var. 14 1/4° E.

- 50 Cross gulch 75 lks. wide, course W. Ascend on W. slope of ridge.  
15 58 Descend.  
22 25 Cross ravine 50 lks. wide course W. Ascend.  
26 44 Summit of ridge course E & W. Descend.  
30 00 Cross ravine, course W. Ascend.  
35 20 Summit of spur course E & W. Descend.  
40 00 Set oak post 3x3 ins. 3 ft. long in rock mound, as per instructions for 1/4 sec. cor.  
63 00 Enter the Tujunga canada course SW & NE  
80 00 Set elder post 4x4 ins. 3 1/2 ft. long in rock mound, as per instructions for cor. to Secs. 1, 6, 7 and 12.  
Land 1st and 2nd rate, very brushy and broken.

NORTH on WEST boundary of Section 6. Var. 14 1/4° E.  
 15 50 Cross road, course NE & SW  
 37 00 Descend into creek of Tujunga, course SW.  
 40 00 Set Sycamore post 3 x 3 ins. 3 ft. long in rock mound as per in-  
 structions, in dry bed of Tujunga Creek for quarter Section corner.  
 43 00 Leave creek bed and ascend steep side hill.  
 50 00 Set redwood post 4 x 4 ins. 3 1/2 ft. long in large rock mound, as  
 per instructions, for corner to Tps. 2 and 3 N. Rs. 13 and 14 W.  
 Land very rough, 2nd rate, grazing. Some Timber, oak & sycamore.

As the northern boundary of this Tp. is too rough to run, I run  
 only part way. I therefore run it a TRUE line.  
 EAST on a TRUE line on NORTH boundary Section 6. Var 14 1/4° E.  
 Descending along SE slope of high mountain.

19 50 Cross gulch 50 lks. wide course S. Ascend.  
 33 00 Summit of spur N & S. Descend.  
 40 00 Set sand rock 10 x 10 x 2 1/4 ins. in rock mound as per instructions,  
 for 1/4 section corner.  
 50 50 Cross gulch 100 lks. wide, course S.  
 75 50 Enter Canada of Tujunga, course SW & NE.  
 80 00 Set Sycamore post 4 x 4 ins. 3 1/2 ft. long, in rock mound as per in-  
 structions, at foot of high mountain on N side of Tujunga Creek,  
 for corner Sections 5, 6, 31 and 32.  
 Land rough, 2nd rate, with scattering timber.

EAST on TRUE line NORTH boundary of Section 5. Var. 14 1/4° E.

2 50 Enter creek of Tujunga, course SW.  
 9 00 Leave same, course SW. Along on S. side.  
 40 00 Set sycamore post 3 x 3 ins. 3 ft. long, in rock mound as per in-  
 struction for 1/4 section corner on S. bank of creek.  
 60 00 The land being too rough to run further on this line, I offset North  
 5.00 chs. to a point in Tujunga Creek; thence run E 20.00 chs.  
 thence S 5 chs., making EAST.  
 80 00 Set oak post 4 x 4 ins. 3 1/2 ft. long in rock mound as per instructions  
 on North slope of mountains, for corner to Sections 4, 5, 32 and 33.  
 Land very rough, 2nd rate grazing. Timber live oak and sycamore.  
 This is as far east as is practicable to run this line on account  
 of the roughness and worthlessness of the country.

September 9, 1875.

Surveyed By Wm. J. Norway  
 Contract of July 31, 1875.  
 Book 300, Part 25.

Field notes of the Subdivision of Fractional Tp 2 N, R 13 W.S.B.B. & M. in the County of Los Angeles, by W.H. Norway, U.S. Deputy Surveyor, under Contract (of July 31, 1875) with James T. Stratton, U. S. Surveyor General of California. (Book 163, Part 3).

Before subdividing this Township I find it necessary to resurvey the Northern boundary of the Rancho La Canada as some of the monuments cannot be found.

From corner No. 81, the NE corner of said Rancho and corner No. 10 of the Rancho San Pascual, I run along the northern boundary of said Ro. N.  $60\frac{1}{2}^{\circ}$  W. Var.  $14\frac{1}{4}^{\circ}$  E.

1st  
chs  
229.26

To a point where corner No. 82 brs. S.  $64^{\circ}$  W. 8.90 chs. distant. I find an old monument of rocks, the stake being decayed, said to be the monument erected in the original survey. I rebuild said monument and set a redwood post 4x4 ins. 3 ft. long in same mound of rocks, marked L O No. 2.

Of my survey, I find by calculation, the true bearing and distance of this course to be N.  $62^{\circ} 18'$  W. 234.43 chs. instead of N.  $60\frac{1}{2}^{\circ}$  W. 227.00 chs. as reported in the field notes of the final survey of said Rancho.

In order to connect this Rancho with the Tp. line, I run from this corner S.  $62^{\circ} 18'$  E. along northern boundary of said Rancho, 131.63 chs. Intersect the Southern boundary of T 2 N, R 13 W, 13.36 chs. west of the corner to Tps. 1 and 2 N, Rs 12 and 13 W.

I set a redwood post 4 x 4 ins.  $3\frac{1}{2}$  ft. long in a mound of rocks as per instructions, for cor to fractional sections 1 and 36.

I continue S.  $62^{\circ} 18'$  E.

146.73  
7 02

Intersect the line between Rs. 12 and 13 W. in T 1 N. South of the corner to Tps. 1 and 2 N, set an oak post 4 x 4 ins.  $3\frac{1}{2}$  ft. long in a mound and pits as instructed for corner to frac. Secs. 1 and 6.

I then return to corner No. 2 of my survey and run the courses and distances as given in the final survey of said Rancho.

N.  $51\frac{1}{2}^{\circ}$  W.

15 89

Finding no corner as called for in former survey, I set a sycamore post 4 x 4 ins.  $3\frac{1}{2}$  ft. long in mound of rocks.

I marked same L. O. No. 3.

N.  $55\frac{1}{2}^{\circ}$  W.

10 55

Finding no corner I set an oak post 4 x 4 ins.  $3\frac{1}{2}$  ft. long in a mound of rocks on east side of a dry creek and mark same L.O.No.4. September 10, 1875.

N.  $29^{\circ}$  W.

3 00

Enter dry bed of creek course SW.

7 20

Leave same at perpendicular bank. Thence crossing brushy table land.

13 15

Finding no corner I set an elder post 4 x 4 ins. 3 ft. long in a large mound of rocks on edge of high bank of table land, W of gulch Marked same L O No. 5.

N.  $44\frac{3}{4}^{\circ}$  W.

37 00

Finding no corner I set a sycamore post 3 x 3 ins. 3 ft. long in a mound of rocks, on E side of gulch and mark same L O No. 6, for corner No. 6 of my survey of Rancho La Canada. Thence N.  $17\frac{1}{4}^{\circ}$  W.

8 40

Enter gulch course S.

10 50

Leave same gulch then along W. side.

18 00

To a point where a mound of rocks standing on the east side edge of high table land on W side of dry arroyo, brs. S.  $72\frac{3}{4}^{\circ}$  W. 71 lks. dist. From the appearance of this mound of rocks, I am satisfied it is one of the corners set in the original survey, and that the error belongs in this last course and distance.

I therefore find the true bearing and distance from corner No. 6 to be N.  $19\frac{1}{4}^{\circ}$  W.

18 00

Instead of N.  $17\frac{1}{4}^{\circ}$  W.

24 50

As reported in the final survey of said Rancho.



I rebuild this mound and set a sycamore post 3 x 3 ins. 3½ ft. long and mark same L C No. 7, in same mound of rocks. Thence N. 4° 02' E. Along east edge of high mesa of table lands.

23 24 Finding no trace of mound of rocks as called for in the corner survey of said Rancho. I set an oak post 3 x 3 ins. 3 ft. long in a large mound of rocks at the SE base of a low hill, on W side of Canada and mark same L C No. 8, for corner No. 8 of my survey of the Rancho La Canada. Thence N. 70½° W.

209 25 To a point where Gray Granite Rock in mound of rocks, corner No. 89 of the original survey of this Rancho, and NE corner of the Rancho Tujunga bears.

12 80 N. 19½° E. This rock mound stands at the foot of the mountains and is known to be the corner set in the original survey from this cor. "No. 9 of my survey" I retract this course, according to its correction.

209 62 S. 67° E.

40 50 To W edge of deep Canada course S.

44 00 Cross same, course S.

106 50 Cross gulch 100 lks. wide, course SE. A house N. about 12 chs.

122 00 Cross dry gulch 100 lks. wide, course S.

140 00 Cross road, course S.

143 50 L. H. Price's house about 3 chs. N.

152 00 Cross gulch, course SE.

167 00 Cross dry gulch, course SE.

177 50 Summit of spur, course N & S

182 00 Cross gulch course SW.

209 62 Corner No. 8 of said Rancho, as reestablished by me. Then I return to corner No. 9, Gray Granite Rock at the foot of the mountain being the NW corner of Rancho La Canada and NE corner of Rancho Tujunga, I run along the northern boundary of the Rancho Tujunga N. 80° W.

26 00 Cross a gulch 50 lks. wide, course SW.

96 00 Corner No. 11 of the final survey of said Rancho. Thence N. 22° W.

9 90 Intersect the Western boundary of the Tp. 22.82 chs. NORTH of the corner to Sections 18 and 19. Set an oak post 3 x 3 ins. 3 ft. long in a mound of rocks at intersection as instructed for corner to fractional sections 18 and 13. September 12, 1875.

-----

SUBDIVISION of Fractional T 2 N, R 13 W. S.B.E. & M.

From the corner to Sections 35 and 36 on the southern boundary of the Township, inside the Rancho La Canada, I run

34 95 NORTH between Sections 35 and 36. Var. 14 1/4° E. Intersect the northern boundary of the Rancho La Canada. Set an elder post 3 x 3 ins. 3 ft. long in a mound of rocks as instructed.

1 98 SOUTH for witness to corner to fractional 35 and 36, from which a Redwood 4 in. dia. bears S. 45° E. 05 lks. dist. From this point of intersection I run along the northern boundary of said Rancho as resurveyed by me.

75 20 S. 62° 15' E. To the corner to fractional Secs. 1 and 36, then from the corner to fractional Secs. 35 and 36, I continue

40 00 NORTH between Sections 35 and 36. Counting the distances from the corner to Secs. 1 2, 35 and 36. Set a redwood post 3 x 3 ins. 3 ft. long in a mound of rocks as instructed for 1/4 section corner.

48 00 Cross road, NW & SE.

69 00 Dunks house about 10.06 chs. E.

80 00 Set a granite rock 6 x 6 x 15 ins. also an oak post 3 x 3 ins. 3½ ft. long in a mound of rocks as instructed for corner to Secs. 25, 26, 35 & 36. Land level, covered with low grease brush. Soil 2nd rate.

-----

EAST on a RANDOM line between Sections 25 and 36. Var. 14 1/4° E. Along S slope of mountains.

35 00 A house SW of line about 12 chs. and a house S 10 chs.

40 00 Set a post for temporary 1/4 section corner.

62 00 Cross gulch 05 lks. wide, course SE.  
80 14 Intersect the Eastern boundary of the Tp. 21 lks. S of the corner to Sections 25 and 36. Whence I run S. 89°51' W. on a TRUE line between Sections 25 and 36. Var 14 1/4° E.  
40 07 Set an oak post 4 x 4 ins. 3 ft. long in a mound of earth and pits as instructed for 1/4 section corner.  
80 14 The corner to Sections 25, 26, 35 and 36.  
Land along S slope of mountains 2nd rate. Good bee range.

-----

NORTH between Sections 25 and 26. Var. 14 1/4° E.  
Ascending.

40 00 Set a redwood post 3 x 3 ins. 5 ft. long in a mound and pits as instructed for 1/4 section corner, whence a Redwood 6 in. dia. bears N. 22° E. 21 lks. dist.  
52 60 Summit of spur E & W. Descend.  
61 50 Cross ravine 50 lks wide course E. Ascend.  
80 00 Set a redwood post 4 x 4 ins. 3 1/2 ft. in a mound of rocks as instructed, on top of ridge bearing NW & SE, for corner to sections 23, 24, 25 and 26.  
Land very rough. Good bee range. Grazing 2nd rate.

-----

EAST on a RANDOM line between Sections 24 and 25. Var. 14 1/4° E.  
Along north slope of divide.

35 50 Cross gulch 100 lks. wide course NE then along N slope of ridge.  
79 84 Intersect Eastern boundary of Tp at point for corner to Sections 24 and 25, whence I run,  
WEST on a TRUE line between Sections 24 and 25. Var. 14 1/4° E.  
39 92 Set a sand rock 6x6x12 ins. in mound of rocks on side hill facing NW as instructed for 1/4 section corner.  
79 84 The corner to Sections 23, 24, 25 and 26.  
Land very rough, 2nd rate. Some scattering timber. Bee ranges.

-----

NORTH between Sections 23 and 24. Var. 14 1/4° E.

17 50 Cross near head of gulch, course SE. Ascend.  
40 00 Set an oak post 3 x 3 ins. 3 ft. long in a mound of rocks as instructed for 1/4 section corner.  
62 50 A large sand rock on line.  
80 00 Set a redwood post 4 x 4 ins. 3 1/2 ft. long in a large mound of rocks on edge of a high perpendicular bluff, sloping to the NE as instructed for corner to Sections 13, 14, 23 and 24, from which a sand rock 10 ft cube, bears S. 45° W. 1 ch. distant.

-----

EAST on a RANDOM line between Sections 13 and 24. Var. 14 1/4° E.

37 50 Cross gulch course SE. Ascend.  
40 00 Set post for temporary 1/4 section corner.  
54 50 Summit of spur course NW & SE. Descend.  
79 80 Intersect the eastern boundary of the Tp 16 lks. N. of the corner to sections 13 and 24, whence I run N. 89°03' W on a TRUE line between Sections 13 and 24. Var. 14 1/4° E.  
39 90 Set a redwood post 3 x 3 ins. 3 ft. long in a large mound of rocks as instructed, on side hill facing NE for 1/4 section corner.  
79 80 The corner to Sections 13, 14, 23 and 24.  
Land broken, soil mostly 2nd rate.

-----

NORTH between Sections 13 and 14. Var. 14 1/4° E.  
Being unable to measure across a deep canada, I cause a flag to be placed on the N side of deep canada, and in the line between Sections 13 and 14, and run a base east of 5 chs. to a point where my flag bears N. 8°05' W, which would give by calculation a distance of 35.20 chs. to flag on N side of deep canada, from this point I continue NORTH between Sections 13 and 14.  
40 00 Set a redwood post 3 x 3 ins. 3 ft. long in a mound and pits as instructed, on summit of high ridge bearing E & W. for 1/4 section corner. Being unable to run farther north on this line on account of the roughness and worthlessness of the country.

-----

EAST on 1/4 Section line through center of Section 13 on a TRUE line. Descending along ridge. Var. 14 1/4° E.