

FIELD NOTES

T. 7 N., R. 15 W.

NORRIS (1854)

Between Sections 13 & 14
do. 11 & 14

C. A. ENSIGN (1898)

Between Sections 10 and 11
All lines (except Township exteriors) of
Sections 6, 7, and 13 to 36, and Meander
of Hugh's Lake in Sections 22 and 23.

Copied from notes loaned to Road Dept., by

J. H. HUNT, Forest Ranger.

6	3 5	4	3	2	1
4					
7	30 8	9	10	3 11	1 12
				3 2	
29	29	20	16	1	
18	28 17	20 16	15 15	11 14	1 13
27	26	19	15	11	2
19	26 20	19 21	14 22	9 23	7 24
23	24	18	13	8	6
30	23 29	18 28	13 27	8 26	6 25
22	21	17	12	8	5
31	21 32	16 33	12 34	7 35	4 36

Norris 1854

Ensign 1898

T. 7 N., R. 15 W., S.B.M.

SOUTH between Sections 11 and 12.

Var. 14°12' E.

30.00 Set a post charred, chalked and notched for the corner to Sections 11, 12, 14 and 13, and raised a mound with trench and pits as inst. Land 2nd rate and rolling.

SOUTH between Sections 13 and 14.

Var. 14°12' E.

20.00 To dry bed of creek 10 lks. wide course E.

25.00 To foot of steep and rugged hill.

40.00 The $\frac{1}{4}$ section corner coming on hill side and not being able to construct a mound which would be permanent, I raised a mound at foot of hill 15 lks. E. and make trench and pits and plant a post as inst. I can proceed no further S. on account of the steepness of the mountains, but return to the corner to Sections 11, 12, 13 and 14 and run

WEST between Sections 11 and 14.

Var. 14°12' E.

40.00 Set a post charred and chalked for the $\frac{1}{4}$ section corner and raised a mound with trench and pits per inst. at the foot of a steep and rugged mountain.

I can proceed no further W. Land 2nd rate.

Vol. 163-33
G. B. J.

R. W. Norris,
December 23, 1854.

T. 7 N., R. 15 W., S.B.M.

SOUTH 0°26' E. (parallel to the E B of Sec. 12) on a RANDOM line between Sections 11 and 12.

Var. 14°50' E.

30.00 Set temp. corner to Sections 11, 12, 13 and 14. Am unable to find any trace of the old corner. Thence I run

N. 89°24' E. (parallel to the N B of Sec. 12) on a RANDOM line between Sections 12 and 13.

Var. 14°45' E.

30.00 - - - - -

S. 89°24' W. retracing the true line between Sections 12 and 13.

Var. 14°45' E.

30.00 Set a granite stone 18x6x5 ins. in the ground near top of E. slope of hillock, to restore the corner to Sections 11, 12, 13 and 14, marked with 1 notch on the E. and 4 notches on the S. edges, dug pits 18 x 18 x 12 ins. in each Section 5 $\frac{1}{2}$ feet dist. and raised a mound of earth 2 ft. high and 4 $\frac{1}{2}$ feet base alongside. Land rolling and some parts stony. Soil loam, 1st rate. No timber or brush.

From the said corner to Sections 11, 12, 13 and 14, I run

S. 0°26' E. (parallel to E B of Sec. 13) retracing the TRUE line between the N $\frac{1}{4}$ of Sections 13 and 14.

Var. 14°45' E.

Over rolling prairie.

10.00 Cross ridge E & W. descend into valley of Mesa Pass Canyon bearing N of E.

12.40 Foot of slope.

21.20 Dry arroyo of the canyon course ENE 15 lks. wide -75

24.00 Leave prairie. Ascend brushy hills.

36.00 Top of spur bearing E & W. +60

40.00 Am unable upon diligent and repeated searches to find any trace of the old corner. Set a granite stone 20x6x5 ins. in the ground, on an E. slope 40 lks. West of the arroyo bottom of a ravine course

North, to restore the $\frac{1}{4}$ section corner marked $\frac{1}{4}$ on W. face from which a

Stem 4 in. dia. of a stool white oak brs. N. $47\frac{1}{2}^{\circ}$ W.

dist. 16 lks. marked $\frac{1}{4}$ S BT.

Dug pits 18 x 18 x 12 ins. N. & S. of stone $5\frac{1}{2}$ feet dist. and raised a mound of earth $1\frac{1}{2}$ feet high $3\frac{1}{2}$ feet base alongside.

April 2, 1890. - - - - - May 14, 1898.

I am instructed by the Surveyor General to complete Section 13 by prolonging this line in above course another full 40 chs. which I do as follows:

48 50	Ridge bearing W.	+70
54 50	Ridge bearing W.	+40
70 00	Deep stony ravine course NW. Soon N.	-75
72 50	Top of spur bearing NW.	+80
78 75	Ravine course W. Soon N.	-50
80 00	Set a stone 19x6x5 ins. 15 ins. in the ground on N. slope for corner to Sections 13 and 24, marked 1 notch on E. and 3 notches on S. edges, raised a mound of stones 2 ft. high $2\frac{1}{2}$ ft. base at E. side.	
	Land, rolling and hilly. Soil 1st and 2nd rate. No timber.	
	A few stool oaks, with greasewood brush over S. 56 chs.	
	24 chs. mountainous and brushy lines.	

EAST on a RANDOM line between Sections 13 and 24. Var. $14^{\circ} 45'$ E.

40 00	Set temp. $\frac{1}{4}$ sec. corner.	
80 10	Int. E. B. of the Tp. at 70 lks S. $0^{\circ} 26'$ E. of the established corner for Sections 13, 18, 19 and 24, already described.	
	Set a stone 24x8x8 ins. 18 ins in the ground on an E slope for the E closing corner between Sections 13 and 24, according to the special inst from the Surveyor General, marked 3 notches on N and S faces, and C C R 15 on the W face, raised a mound of stones 2 ft high 3 ft base at W side of corner. Thence I run	

WEST on a TRUE line between Sections 13 and 24. Var. $14^{\circ} 45'$ E.

Over hilly and broken lands.

Ascend through heavy brush.

6 00	Top of ridge bearing N & E. Leave brush, enter prairie bearing N&S general slope to NW.	+50
9 50	Ravine course NW.	
14 50	Ridge bearing N & S.	
33 00	Leave prairie bearing N & S near its SW angle, re-enter brush at brow of descent into canyon.	-25'
38 00	Bottom of stony ravine course NW 50 lks. wide.	-70'
40 05	Set a stone 18x9x4 ins 12 ins in a mound of earth and stones (on the N point of rocky spur at about 3.50 chs S of junction of arroyos; thence running N.) for $\frac{1}{4}$ section corner marked $\frac{1}{4}$ S on W side and raised a mound of stones $1\frac{1}{2}$ ft. high 3 ft base alongside.	+25'
	Along a rolling hillside and up a valley.	
66 00	Ridge bearing N & S.	+80
	Over rolling hilltop.	
80 10	The W corner to Sections 13 and 24.	
	Land hilly and broken. Soil 1st, 2nd and 3rd rate.	
	No timber, oak and greasewood brush.	
53.60 chs.	mountainous and brushy lines.	

July 9, 1898

From the established corner to Sections 11, 12, 13 and 14, already described, I run

S. $89^{\circ} 23'$ W. (Parallel to the N B of the Tp) retracing the E. $\frac{1}{2}$ mile between Sections 11 and 14.

Var. $14^{\circ} 45'$ E.

	Over rolling prairie.	
12 25	Into valley course NE.	
19 00	Top of ridge bears NNE.	
23 50	Ravine course NE.	
24 75	Ridge bears NW.	

28.00 Ravine course NE.
 28.75 Trail bearing NE. whence about 3 chs. S. to Peterson's house (1898)
 33.00 Ridge bearing N.
 37.50 Arroyo in valley course N.
 40.00 Am unable to find any trace of the old corner.
 40.06 Make this $\frac{1}{2}$ mile proportionate to the length of the sections in the
 N E of the Tp. and set a stone 16x6x6 ins. 12 ins. in the ground on W
 slope to restore the $\frac{1}{4}$ section corner between sections 11 and 14,
 marked $\frac{1}{4}$ on N face; dug pits 18x18x12 ins. E & W of stone $5\frac{1}{2}$ feet
 distant and raised a mound of earth alongside $1\frac{1}{2}$ ft. high by $3\frac{1}{2}$ ft. base.
 April 2, 1890.

From the established corner to Sections 2, 3, 10 and 11, I run
 S. $0^{\circ} 26'$ E. (parallel to E B of Tp) on a RANDOM line between
 Sections 10 and 11, to complete Section 11. Var. $15^{\circ} 10'$ E.
 40.00 Set temp. $\frac{1}{4}$ section corner.
 50.00 Set temp. corner to Sections 10, 11, 14 and 15. Thence
 N. $89^{\circ} 23'$ E. (parallel to N E of Tp) on a RANDOM line between the
 W halves of Sections 11 and 14. Var. $14^{\circ} 55'$ E.
 40.16 Change of Var due to local causes.
 Fall, 12 lks. S. of the established $\frac{1}{4}$ section corner whence I run
 S. $89^{\circ} 18'$ W. on the TRUE line of the W. $\frac{1}{2}$ mile between sections 11 & 14.
 Var. $14^{\circ} 50'$ E.
 2.00 Top of spur bearing N. -20'
 5.50 Foot of hills. -50'
 6.00 Enter bottom of Hugh's canyon course NE.
 7.75 Enter creek bottom or wash 50 lks. wide 6 ft. deep course NE.
 8.50 Leave prairie and ascend brushy hills with scattering pines.
 19.00 Top of broad spur bearing NE. +50
 Over slight valley and -10
 22.75 Top of spur bearing NE. Descend. +20'
 28.00 Mouth of gully from S into a deep ravine from WNW -30'
 course N of E.
 33.90 Arroyo of branch ravine course NE.
 Ascend point of spur and along a rocky ridge bearing E & W.
 38.15 Top of hillock on ridge. +100
 39.50 Cross large loose rocks.
 40.06 At proportionate distance to conform to measurements in N E of Tp.,
 Set a stone 18x6x5 ins. 12 ins. in the ground and a mound of stones
 (in sag in the narrow ridge of spur bearing E), for corner to Secs.
 10, 11, 14 and 15, marked with 2 notches on the E and 4 notches on
 the S edges, from which a
 Pine 10 ins. dia. bears S. $49\frac{1}{2}^{\circ}$ W. 66 lks. distant,
 marked T 7 N, R. 15 W. S. 15 BT.
 A + and BR out on top of a rock in place 4 ft. high 6x4 feet dimen-
 sions out of the ground, in a ledge of shattered rock bears
 S. $64\frac{1}{2}^{\circ}$ E. 53 lks. distant.
 Land rolling, hilly and rough.
 Soil of the prairie, loam 1st rate; of the stone hills 2nd & 3rd rate.
 Timber, scattering pines W of Hugh's canyon with brush in this part.
 31.56 chs. mountainous and brushy lines.

From the established corner to Sections 5, 6, 31 and 32, in the N E
 of the Tp. already described, I run
 S. $0^{\circ} 26'$ E. (in the course of the C B of the Tp) retracing the TRUE
 line of the N $\frac{1}{2}$ mile between sections 5 and 6. Var. $15^{\circ} 05'$ E.
 40.00 Set stone 18x18x7 ins. 12 ins. in the ground.
 From this corner the house of Chas. Cushing bears S. $51^{\circ} 40'$ W.
 9.50 chs. distant. June 8, 1898.
 I am specially instructed to complete this section line by prolong-
 ing it another full 40 chs. which I do as follows:
 80.00 Set a stone 20x8x6 ins. 15 ins. in the ground on W. slope of hill and
 E side of a spring run, course N for corner to Sections 5, 6, 7 & 8,
 marked 5 notches on E & W edges, from which
 A pine 16 ins. dia. bears N. $25\frac{1}{2}^{\circ}$ W., 13 lks. distant
 marked T. 7 N., R. 15 W. S. 6 BT.
 A prong 10 ins. dia. of a stool black oak bears S. $87\frac{1}{2}^{\circ}$ E.
 73 lks. dist. marked T. 7 N. R. 15 W. S. 8 BT.
 Land level, rolling and mountainous, Soil mostly 1st rate.

Timber, a few pines and some oak woods.
24 chs. mountainous and brushy lines.
(June 25)

August 2, 1898.

- WEST on a RANDOM line between Sections 6 and 7. Var. 14°50' E.
- 40.00 Set temp. $\frac{1}{4}$ section corner.
- 81.40 Int W B of Tp. 5.34 chs. S. of the corner to 5th mile, already described as corner to Secs. 1, 12 (6 & 7).
Set a stone 20x10x8 ins. 15 ins. in the ground and stones (on E side of a mountain, 75 lks. S. of a ridge or angle of mountain bearing W & S) for (W) closing corner to Sections 6 and 7, marked with 5 notches on S., 1 notch on N., and O O on E faces, raised a mound of stones 2 ft. high 3 ft. base at E side. Thence I run
EAST on TRUE line between Sections 6 and 7. Var. 14°50' E.
Descend steep side of the mountain through open brush and scrub.
- 3.60 Foot of mountain, in narrow canyon bottom, 50 lks. wide -150'
bearing NNE about 6 chs. above junction with Kings Canyon.
Cross the bottom and ascend the N point of a high rocky mountain with open brush.
- 17.80 Gully in side of mountain runs N.
- 26.80 Gully in side of mountain runs N.
- 31.25 Top of mountain bearing NNE. Descend steep slopes +250'
- 38.00 Foot of mountain. Enter broad wash of a canyon bearing N. thence W. on N. -250'
- 39.70 Across wash. Ascend bluff to mesa land with open brush. +12
- 41.40 Set a stone 27x8x8 ins. 20 ins. in the ground and mound of earth for $\frac{1}{4}$ sec. corner marked $\frac{1}{4}$ on N. face, raised a mound of stones 2 ft. high 3 ft. base alongside, from which a
White oak 5 in. dia. brs. S. 34° E. 16 lks. distant.
This corner is 30 lks. S. of the S. bank of a stony ravine, course W. Ascend along the W. side of the Valley and ravine in dense brush and scrub oaks.
- 45.00 Ravine from NNE course W.
- 56.80 Spur bearing NNW. +150
- 63.00 Spur brg. N. +50
- 68.40 Ravine (Valley) course NW. -20
- 72.50 Leave brush and scattering timber, enter rolling prairie sloping N. +60
- 77.00 Top of hillside sloping N. +60
- 78.30 Ravine course N. -25
- 79.70 Point of hill brg. N. +20
- 80.70 Ravine course W. of N., about 6 chs. below small spring to SSE -40
- 81.40 The corner to Sections 5, 6, 7 and 8. +20
Land mountainous, soil alluvial and stony, 1st, 3rd & 4th rate.
Timber, scattering pines and oaks.
72 chs. of mountain and brushy lines.

August 4, 1898.

From the corner to Sections 35, 36, and (1 and 2) in the S B of this Tp. already described.

N. 0°26' W. (parallel to the E B of the Tp) bet. Secs. 35 and 36.
Var. 15° 00' E.

Because of the broken and precipitous slopes of the mountain side making it impracticable to measure along the TRUE line, I run as follows:-

Beginning at the witness corner 135 lks. E. of the point for the TRUE corner, thence

N. 30° W. 1.16 chs. whence distance N. is 1.00 ch. and departure W is 58 lks. thence

Along W. side of the mountain in open brush N. 17° 45' W. 5.12 chs., chaining on surface having a slope of 28 $\frac{1}{2}$ ° rise, whence the horizontal distance is 4.50 chs., and the distance N. is 4.28 chs., and the departure W. is 1.37 chs., to a point at top of a mountain ridge sloping W., thence offset E. 56 lks. to the TRUE line bet. Secs. 35 & 36 at +175

- (5.28) 5 28 chs. N. 0°26' W. of the section corner, thence
N. 0°26' W. Through thick brush.

- 7.50 Bottom of ravine course SW. -40'
- 14.25 Top of mountain ridge brg. W. +150'
- 16.25 Valley descends W. -15

20.00	Top of ridge descends W.	+25
22.30	Ravine course W. Head of Maxwell's Canyon.	-40
27.00	Ridge brg. W.	+50
28.75	Valley course W.	-20
35.60	Top of mountain extending SE & NNW.	+75
40.00	Set stone 22x10x5 ins. on the bedrock in shallow soil in a mound of (-50 stones and earth for $\frac{1}{4}$ sec corner marked $\frac{1}{4}$ on W. face. Pits impracticable.	
47.75	Ravine course E.	-75
50.30	Short spur brg. E.	+40
53.00	Ravine course S. of E.	-50
55.50	Spur brg. E.	+75
57.00	Valley slopes E.	-40
58.50	Ridge brg. E.	+20
65.00	Ravine course NE.	-80
68.00	Top of spur brg. E.	+60
75.50	Bottom of canyon course E. soon NE.	-80
	Ascend on SE slope	
80.00	Set a post of Manzanita 4 ft. long 4 in. sq. (with a stone 18x6x5 ins. marked for the corner, buried at W. side) 18 ins. in the ground (in a sag in the E. side of the Mountain) for the corner to Sections 25, 26, 36 and 35, marked R. 15 W S 25 on the NE. T 7 N S 36 on SE. S 35 on the SW. and S 26 on the NW faces, with 1 notch on the E & S edges, raised a mound of earth $1\frac{1}{2}$ ft high and 4 ft base around post. Regular pits impracticable.	
	Land mountainous. Soil loam and rocky, 1st, 2nd and 3rd rate.	
	Timber, a few oaks and pines in the ravines and canyons.	
	80 chs. mountainous and brushy lines. May 6, 1898.	

	EAST on a RANDOM line bet. Sections 25 and 36. Var. 14°00' E.	
	Change of Var. due to unknown causes.	
40.00	Set temp. $\frac{1}{4}$ sec. corner.	
79.90	Fall 36 lks. N. of the corner to Secs. 25 and 36 and (30 and 31) in the E E of the Tp. already described. Thence I run N. 89°45' W. on the TRUE line bet. Secs. 25 and 36. Var. 14°50' E.	
	Through heavy oak brush.	
4.00	Top of ridge brg. NE.	+50
6.00	Ravine course NE.	-30
12.00	Broad spur brg. NNE.	+60
20.25	Canyon course N, some scattering trees, mostly oaks.	-100
30.00	Top of broad spur brg. N.	+150
39.95	Set oak post 4 ft. long 3 in. sq. 18 ins. in the ground (on W slope of mountains) for $\frac{1}{4}$ sec. corner, marked $\frac{1}{4}$ S. on N. face, regular pits impracticable, raised a mound of earth 1 ft. high 3 ft. base around post, from which a	-60
	Lilac 6 ins. dia. brs. S. 15 $\frac{1}{4}$ ° W. 17 lks. dist. marked $\frac{1}{4}$ S BT.	
	Manzanita 6 in. dia. brs. N. 15° E. 18 lks. dist. marked $\frac{1}{4}$ S BT.	
	Continue to descend through some oak wood, small trees & heavy brush.	
44.00	Bottom of Rodde Canyon course N.	-200
45.00	Arroyo, stream 2 lks. wide course E. of N.	
45.50	Ascend warped hillside. Leave trees.	
53.75	Ridge in hillside brg. SE.	+200'
54.25	Gully, descends to SE.	-30
60.00	Brow of mountain brg. N & S.	+100
64.25	Top of mountain brg. N. Descend.	+50
69.00	Bottom of canyon from SW. Course N.	-150
	Ascend over SE angle of hill.	
72.50	Ridge brg. N.	+90
74.40	Ravine course N.	-75
75.25	Cross N. point of hill.	+20
78.30	Bottom of canyon brg. NE with scattering pines. Ascend.	-75
79.90	The corner to Sections 25, 26, 35 and 36.	
	Land mountainous. Soil alluvial, 1st rate. Rocky, 3rd rate.	
	Timber, a few pines, a little oakwood, and small trees in canyons.	
	79.90 chs. mountainous and brushy lines. May 9, 1898.	

N. 0°26' W. bet. Sections 25 and 26.

Var. 14° E.

Change in Var. due to unknown local causes.

Along E. brow of mountain.

1.50	E. point of ridge. Descend.	+50
6.75	Ravine course E. 3 or 4 chs. above junction.	-100
10.40	Top of spur brg. E.	+75
13.75	Ravine course E. 40 lks. wide.	-70
19.25	Brow of spur brg. E.	+100
22.25	Descend.	
28.50	Bottom of ravine course E.	-80
31.00	Spur brg. E.	+75
40.00	Set a stone 15x12x6 ins. 10 ins. in the ground (30 lks. W. of arroyo running N) for $\frac{1}{4}$ sec. corner, marked $\frac{1}{4}$ on W. face, raised a mound of stones $1\frac{1}{2}$ ft. high $2\frac{1}{2}$ ft. base alongside, from which a + BR cut on W end of rock 2 ft. high 3x1 ft. out of ground at E side of arroyo brs. N. 21° E. 81 lks. dist. Var. 15° E.	-30

Change of Var. due to local causes.

Continue descent along E. slope.

46.00	Top of spur now brg. NE.	-125'
50.25	Foot of mountain.	-100'
	Enter Lake Valley, general brg. E. & W.	
	Leave oak brush, enter low weeds.	
55.00	Enter barley field.	
	Munn's cabin brs. S. 60° W. 25 chs. dist.	
60.75	Cross wire fence brg. E. & W. Leave field.	
62.50	Enter soft marsh brg. E. & W.	-50
64.50	Leave marsh brg. E. & W.	
65.00	Cross wire fence brg. E. & W.	
	Enter scattering willows.	
68.50	Cross pole fence brs. E. & W.	
74.50	W. end of G.O. Hughes' house (formerly the Veyasett place)	
76.25	Cross wire fence brs. N. of W and S of E.	
76.50	Road brg. NW to S of E, from Pine canyon to Elizabeth Lake.	
	Leave willows.	
80.00	Set a stone 22x9x5 ins. 18 ins. in the ground and mound of stones for cor. to Secs. 23, 24, 25 and 26, marked with 2 notches on S. and 1 notch on E. edges, raised a mound of stones 2 ft. high 3 ft. base alongside. +7'	
	Land mountainous, valley and narrow marsh or slough.	
	Soil, alluvial, loam and muck, 1st rate. Some stony steep slopes, 2nd and 3rd rate.	
	No timber, except a few willow trees.	
	50.25 chs. mountainous and brushy lines.	May 14, 1898.

EAST on a RANDOM line bet. Secs. 24 and 25.

Var. 14°20' E.

Change of Var. due to local causes.

40.00	Set temp. $\frac{1}{4}$ sec. corner.	
80.30	Int. the E B of the Tp at 102 lks. N. 0°30' W. of the cor. established for the cor. to Secs. 24, 25 (19 and 30) already described.	
	Set a stone 18x8x4 ins. 10 ins. in the ground (and bedrock at brow of the slope E into a deep gorge in the S. side of the mountain) for (E) closing corner for Secs. 24 and 25, marked with 2 notches on S. 4 notches on N, and 00 on W faces, raised a mound of stones and earth 2 ft. high $3\frac{1}{2}$ ft. base at W. side. Thence I run	
	WEST on the TRUE line bet. Secs. 24 and 25.	Var. 14°40' E.
	Over the broken and brushy slope (S) of the mountains.	
0.50	Top of ridge or spur, descending E. of S.	+10
2.25	Ravine descends SSW.	-30
3.50	Ridge brs. SW.	+20
6.00	Valley descending SSW.	-40
10.50	Spur brg. SW and bends W.	+45
15.00	Valley descending N.	-30
15.50	N point of small spur	+20
	Descend and along S side of valley or bay several chs. wide.	
20.00	Foot of descent.	
26.00	Top of W point of last spur.	
29.00	Foot of the hills into a widening valley with sparse brush.	-70

40.15 Set stone 24x8x4 ins. 18 ins. in the ground (on the plain descending S. and opening into the Lake Valley 10 and 12 chs. below) for $\frac{1}{4}$ sec. cor. marked $\frac{1}{4}$ on N. face and raised a mound of stones $1\frac{1}{2}$ ft. high $2\frac{1}{2}$ ft. base alongside.

46.00 Road brg. N. & S. from Mesa Mt. to the valley.

46.50 Ascend brushy hills.

52.25 Spur from NW to SW. +60

55.75 Ravine course S. -10

57.40 Spur brg. S. +40

60.25 Ravine course SW. -25

64.50 Spur brg. S. +15

67.25 Valley descending NW. -15

68.50 Ridge brg. NW. +10

70.00 Foot of hills into prairie valley brg. N. & S.

80.30 The cor. to Secs. 23, 24, 25 and 26.

Land mountainous and valleys.

Soil, gravelly and washed slopes, 2nd rate. No timber.

52.50 chs. mountainous and brushy lines. July 9, 1895.

N. $0^{\circ}26'$ W. on a random line bet. Secs. 23 and 24. Var. $14^{\circ}20'$ E.

40.00 Set temp. $\frac{1}{4}$ sec. corner.

77.85 Fall 26 lks. W. of the W. cor. bet. Secs. 13 and 24. Thence I run S. $0^{\circ}15'$ E. on the TRUE line bet. Secs. 23 and 24. Var. $14^{\circ}45'$ E. Change of the Var. is due to local causes.

Over brushy ridges. Ascend.

1.00 Top of ridge brg. S. of W. and N. of E. +15'

3.25 Ravine course N. of E. -40

4.50 Ridge brg. E. +40

5.50 Valley descends E. -20

9.00 Ridge brg. E. +25

13.00 Valley runs E. -20

14.75 Ridge brg. E. +20

17.50 Cross spring run in ravine course E. just above junction from S & SE. -50

23.50 Leave brush, having passed some oakwood on this slope.

Enter rolling prairie brg. E. & WNW.

25.00 In cornfield, - top of hill running to SW. +75

A house of Dan Curtiss, brg. S. 69° W. about 10 chs. dist.

Springs in same brg. about 6 chs. dist.

36.75 Wire fence brg. NE & SW. Enter barley field.

37.85 Set an elder post 3 ft. long 3 ins. sq. 1 ft. in ground, (at N edge of dry pond) for $\frac{1}{4}$ sec. cor. marked $\frac{1}{4}$ S on W face, raised a mound of earth and stone 1 ft. high $2\frac{1}{2}$ ft. base around post, regular pits impracticable because of very hard, baked soil.

The residence of Dan Curtiss brs. S. 63° W. over rolling ground.

43.00 Descend from low hills.

48.40 Road bearing E & W. along S brow of Mesa mountain to Elizabeth Lake PO.

49.00 The residence of Dan Curtiss brs. N. $61^{\circ}30'$ W.

Leave barley fields and prairies and enter dense brush.

51.00 Descend over broken brushy side of mountain.

66.00 Foot of mountain brg. E. & W. and into cove or bay of Lake valley and prairie. -500

77.85 The cor. to Secs. 23, 24, 25 and 26. -50

Land hilly, rolling prairies and mountains side.

Soil, alluvial. 1st rate, slopes and wash 2nd and 3rd rate.

No timber, except a very little oakwood.

40.50 chs. mountainous and brushy lines. July 9, 1895.

From the cor. to Secs. 34 and 35 in the S B of the Tp. already described, I run

N. $0^{\circ}26'$ W. (in the course of the E B of the Tp) between sections 34 and 35. Var. $14^{\circ}50'$ E.

Descend the mountain through dense brush, consisting largely of oak, buckthorn and other thorn brushes.

9.00 Ravine 15 ft. deep course NNE with scattering pines and small oaks.

16.50 Same ravine course NNW. -300

20.75 Ridge or swell of ground brg. W. +20

23.75 Continue descent of mountain.

30.00 Foot of mountain in ravine course NW. -225'

31.90	Ridge brs. W.	+20
32.75	Arroyo course W.	-15
36.50	Point of hill brg. W.	+15
39.50	Descend.	
40.00	Set a stone 24x12x4 ins. in a mound of stones and seated in bedrock on the S bank of arroyo for $\frac{1}{4}$ sec. cor. marked $\frac{1}{4}$ on W face, pits impracticable.	
40.15	Arroyo 10 ft. deep course SW. Ascend across mountain spurs, through light brush.	
43.00	Brow of spur 3 chs. across and brg. SW.	+100
49.50	Ravine course SW.	-40
54.00	Spur brs. W. and then SW.	+125
58.50	Valley descending W and SW.	-75
64.50	Top of mountain brg. W. and SE.	+150
	Descend into dense brush with considerable oakwood.	
75.00	Ridge brg. NE.	
80.00	Set a stone 26x10x6 ins. 19 ins. in the ground and mound of stones on N. slope of the mountain for cor. to secs. 26, 27, 34 and 35, marked with 1 notch on S and 2 notches on E edges, from which a Black oak 7 in. dia. brs. S. $59\frac{1}{4}^{\circ}$ W. 17 lks. dist. marked S. 34 T 7 N R 15 W BT. Black oak 6 in. dia. brs. N. $69\frac{1}{4}^{\circ}$ W. 20 lks. dist. marked S 27 T 7 N R 15 W BT.	
	Land mountainous, soil alluvial and hardpan, 1st, 2nd and 3rd rate. Timber, a few pines and some small oakwood.	
	80 chs. mountainous and brushy lines.	July 5, 1898.

	EAST on a RANDOM line bet. Secs. 26 and 35.	Var. $14^{\circ}50'$ E.
40.00	Set a temp. $\frac{1}{4}$ sec. cor.	
80.30	Fall 22 lks. S. of cor. to Secs. 25, 26, 35 and 36. Thence I run S. $89^{\circ}50'$ W. on the TRUE line bet. Secs. 26 and 35. Var. 14° E.	
	Ascend through brush.	+75
3.25	Top of mountain extending to NW.	-80
6.60	Ravine course N.	
12.50	Top of mountain brg. N & S.	+100
	Descend along S. side of valley.	
19.25	Ravine course N.	-80
23.80	Ridges sloping N.	+20
34.00	Bottom of branch of Maxwell's canyon brg. WSW	-150
39.00	S. point of spur (sloping W).	+60
40.15	Set a stone 16x10x4 ins. 10 ins. in the ground and bedrock near foot of W. slope of the spur for $\frac{1}{4}$ sec. cor. marked $\frac{1}{4}$ on N. face, raised a mound of stones $1\frac{1}{2}$ ft. high $2\frac{1}{2}$ ft. base at E. side of cor.	-30
43.00	Top of rocky spur brg. SSW.	+50
47.25	Ravine course SSW.	-30
49.75	Spur brg. SSW.	+20
59.75	Foot of mountain, in Maxwell's canyon course nearly N. soon brs. W.	-200
	The arroyo is very crooked, has springs and pools of water, and is overhung with willows and other brush.	
60.25	Leave bottom and ascend brushy mountain.	
70.00	Ridge slopes N., thence along N. side of mountain in dense brush.	+250
76.00	Begin descent into valley descending N. down the side of the mountain in brush and small oaks.	-30
80.30	The corner to Secs. 26, 27, 34 and 35.	
	Land mountainous, soil loam, hardpan and rocky, 2nd, 3rd & 4th rate. No timber except a few small oaks.	
	80.30 chs. mountainous and brushy lines.	July 5, 1898.

	N. $0^{\circ}26'$ W. bet. Secs. 26 and 27.	Var. $14^{\circ}50'$ E.
	Descend along a valley in the side of the mountain.	
11.75	Foot of mountain in rocky arroyo of Maxwell's canyon.	-300
	Course W. with pools and running water.	
12.50	Across bottom. Ascend mountain along a broken ravine coming S. through open brush.	
26.25	Top of spur brg. W.	+275
30.50	Valley course W.	-40
31.75	Spur brg. W.	+20
36.00	Ravine course WNW.	-50
38.50	Spur brg. WNW.	+40

X 40.00 Set a stone 25x10x8 ins. 18 ins. in the bedrock and earth, on steep slope to the N. 15 lks. W. of nose of rocky ground, for $\frac{1}{4}$ sec. corner marked $\frac{1}{4}$ on W. face, raised a mound of stones $1\frac{1}{2}$ ft. high $2\frac{1}{2}$ ft. base at E. side. -30

40.30 Gully 15 ft. deep course W. about 2 chs. above junction of ravine.

41.30 W. point of rocky spur.

41.75 Ravine course SW about 150 chs. above a rock cascade, -20'
Ascend a precipitous bluff.

50.00 Flat spur brg. SW. +75

54.50 Ravine course SW. -40

59.75 Spur brg. SW. +60

66.50 Ravine course SW. -50

72.00 Spur brg. WNW. and over rolling mountain top. +60

78.00 Enter timber, mostly pines.

80.00 Set a cedar post 4 ft. long 4 in. sq. 18 ins. in the ground at the N. point of a ridge, for cor. to sections 22, 23, 26 and 27, marked S. 23 T. 7 N. on NE., S. 26 R. 15 W. on SE., S. 27 on the SW and S 22 on the NW faces with 2 notches on S. and E. edges, raised a mound of earth 18 ins. high $3\frac{1}{2}$ ft. base around post, from which a
Pine 12 in. dia. brs. N. $41\frac{1}{2}^{\circ}$ E. 59 lks. dist.
marked S. 23 T 7 N R 15 W. BT.
Pine 10 in. dia. brs. S. 18° E. 22 lks. dist.
marked S. 26 T 7 N R 15 W. BT.
Stool black oak brs. N. $65\frac{1}{2}^{\circ}$ W. 65 lks. dist.
marked S. 22 T 7 N R 15 W. BT.

Land mountainous, soil 2nd and 3rd rate.
Timber, some small oaks and a few pines.
80 chs. mountainous and brushy lines. July 6, 1898.

EAST on a RANDOM line bet. Secs. 23 and 26. Var. 15° E.
Change of Var. due to local causes.

40.00 Set temp. $\frac{1}{4}$ sec. corner.

80.24 Fall 47 lks. S. of corner to Secs. 23, 24, 25 and 26; thence I run S. $89^{\circ}40'$ W. on the TRUE line bet. Secs. 23 and 26. Var. $14^{\circ}20'$ E.
Over prairie bottom of Lake Valley.

7.00 Road brg. E., SE. to Elizabeth Lake P.O.

7.25 Wire fence brs. ESE and WNW. enter enclosure of G.O. Hughes (formerly premises of F. Veysett). Descend.

13.00 N. end of former pond and tule swamp, now drained and mostly cultivated. -30'

40.12 Set a limestone 18x14x6 ins. 12 ins. in the ground at the top of the extension of low hill, brg. to the NW. and rim of the basin of swamp just passed, for $\frac{1}{4}$ sec. corner, marked $\frac{1}{4}$ S on N face, and raised a mound of stones $1\frac{1}{2}$ ft high $2\frac{1}{2}$ ft base, alongside. +15'

43.50 Foot of mountains brg. SE and nearly W, thence across N. points of foot hills, leave prairie and enter brush.

51.00 Top of point of mountain. + 40

58.00 Enter mount of short mountain ravine, from S 1 ch wide. Touch shore of Hughes' Lake. +50
Ascend over points of foot hills, through scattering pines with little brush.

76.00 Point of mountain, sloping nearly N. +60

78.50 Short gulch descending N. Ascend. -40

80.24 The corner to Secs. 22, 23, 26 and 27. +50
Land, rolling, swamp and hilly. Soil wash, muck and sandy.
1st, 2nd and 3rd rates. Timber, a few pines on slopes S. of Lake.
35.74 chs. mountainous and brushy lines. July 7, 1898.

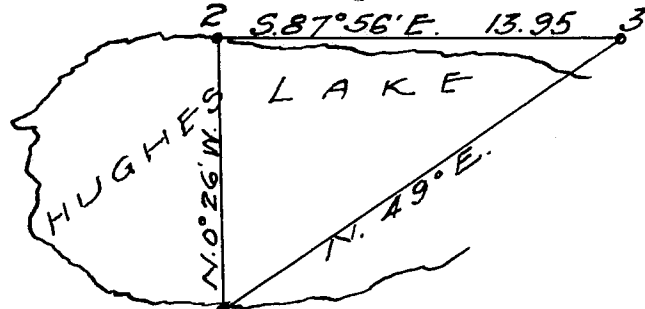
N. $0^{\circ}26'$ W. bet. Secs. 22 and 23. Var. 15° E.

4.20 Descend steep point on ridge of hill, through openings of pines & oaks.
Foot of mountain, S bank of Hughes' Lake brg. E & W. Set a cedar post 4 ft. long 3 in. sq. 1 ft. in the ground, at the ordinary low water mark for meander cor. marked T 7 N on S., S 23 R 15 W. on E., S. 22 on W. and M C. on N faces, raised a mound of stones $1\frac{1}{2}$ ft high 3 ft base around post. From which an
Oak 36 in. dia. brs. S. $32\frac{1}{2}^{\circ}$ E. 31 lks. dist. marked M C BT.
The S stem 20 in. dia. of a double willow brs. S. 75° W. 17 lks. dist. marked M C BT.
The washed bank in high water in 3 ft. higher.

Thence I send flags across lake, one N. $0^{\circ}26'$ W. at a point called No.2, and another in brg. N. 49° E. at a point called No.3, which brs. S. $87^{\circ}56'$ E. dist. 13.95 chs. from No.2, carefully measured for a base. Hence distance found from M C. (No.1) to No.2 is 12.54 chs. Return S. $0^{\circ}26'$ E. 19 lks. to ordinary low water mark N bank of Hughes' Lake, and plant a cedar post 4 ft. long 3 ins. sq. 18 ins. in the ground for meander corner, marked T 7 N. on N., S 23 R 15 W. on E., S 22 on W., and M C on S faces. Dug a pit 3 ft. sq. 6 ft. N of post and raised a mound of earth 2 ft. high 4 ft. base around the post. The washed bank is 3 ft. higher. The distance between meander corner is 12.54 chs., triangulated, less 19 lks. = 12.35 chs. to which add 4.20 chs. and distance run on this section line is

16.55

M C. post at N. margin Hughes' Lake;
Triangulation:



Continue N. $0^{\circ}26'$ W. from lake measuring by chain.

Ascend gentle slopes, over prairie and sage brush.

17.80

Road nearly E & W. from Pine and Elizabeth Canyons to Elizabeth Lake.

20.00

Wire fence brg. E & W.

20.50

Road brg. E & W.

The house of P. Lavell on S 22 brs. N. 85° W. 27 chs. dist.

The house of Jno. Lavell on S 22 brs. W. 87° W. 24.50 chs. dist.

The tent of Chas. Hahn, settler on S. 23, brs. N. 50° E. 8 chs. dist.

July 8, 1898.

23.00

Top of swell of E. slope of spur brg. S.

Descend rolling ground, brushy.

33.00

Into valley descending S and SE., open brush.

Ascend along valley.

40.00

Set a stone 20x10x7 ins. 15 ins. in the ground 30 lks. W. of arroyo, course S for $\frac{1}{4}$ sec. cor., marked $\frac{1}{4}$ on W. face, from which a

Black oak 5 ins. dia. brs. N. $50\frac{1}{2}^{\circ}$ E. 86 lks. dist. marked $\frac{1}{4}$ S. BT.

Black oak 3 in. dia. brs. S. $41\frac{1}{4}^{\circ}$ W. 81 lks. dist. marked $\frac{1}{4}$ S. BT.

Raised a mound of stones $1\frac{1}{2}$ ft. high and $2\frac{1}{2}$ ft. base alongside of cor. Continue along W. side of the valley.

45.00

Ascend steep brushy slopes.

51.25

Top of stony, sharp ridge brg. W & SW.

57.00

Ravine course W.

62.00

Ridge sloping W.

63.00

Ravine course SW.

69.50

Brow of Mesa Mt. brg. ESE and W.

70.00

Road brg. E & W. Leave brush and enter prairie near its W end brg. E&W.

74.25

Leave prairie and re-enter brush and small trees, brg. E & W.

Gently descend.

80.00

Set a stone 17x6x5 ins. 12 ins. in the ground for cor. to Secs. 14, 15, 22 and 23, marked with 3 notches on S, and 2 notches on E edges.

Dug pits in each section $5\frac{1}{2}$ ft. distant, and raised a mound of earth 2 ft. high and 4 ft. base alongside, also set an alder post at NE side of stone.

Land, valley, level and mountainous. Soil alluvial, sandy and stony, 2nd, 3rd and 4th rate.

A few pines and oaks S of the lake.

44.45 chs. mountainous and brushy lines.

July 9, 1898.

EAST on a RANDOM line bet. Secs. 14 and 23. Var. 14°40' E.
Change of Var. due to local causes.

40.00 Set temp. $\frac{1}{4}$ sec. corner.
80.40 Int. line bet. Secs. 13 and 14 at 175 lks. N. 0°26' W. of W. cor. bet. Secs. 14 and 24, set stone 17x6x6 ins. 12 ins. in the ground on a N. slope for (E) closing corner bet. Secs. 14 and 23, marked with 3 notches on N & S and 1 notch on E. and C C on W faces, raised a mound of stones $1\frac{1}{2}$ ft. high $2\frac{1}{2}$ ft. base at W side. Thence I run WEST on the TRUE line bet. Secs. 14 and 23. Var. 14°45' E.
Over uneven country through brush.

.50 Arroyo runs N. -10
11.50 Spur brg. N. +25
18.50 Ravine course N. -30
20.75 Spur brg. NNW +40
23.50 Ravine course NNW. -30
27.00 Road NW & SE.
27.50 Top of spur brg. NNW. +50
30.00 Descend down a valley course W.
39.00 Cross arroyo in the valley, now turns NW. -100
Ascend N. point of hill in scattering timber and open brush.
40.20 Set a stone 17x6x6 ins. 13 ins. in the ground on N. slope of point of spur for $\frac{1}{4}$ sec. cor. marked $\frac{1}{4}$ on N. face, from which a
Pine 28 in. dia. brs. S. 51° W. 18 lks. dist.
marked $\frac{1}{4}$ S BT.
Pine 18 ins. dia. brs. N. 20° W. 10 lks. dist.
marked $\frac{1}{4}$ S BT.

45.00 Ravine course NNW. about 75 lks. above junction of arroyos. Leave trees and cross N point of hill.
46.50 Arroyo bottom and trail in Mesa Pass canyon from SW to nearly E. The general course of the canyon is NNE.
Ascend side of mountain warped with ridges and gullies, brg. S. of E. in open brush.

63.00 Top of mountain divide brg. NNW. +150
69.50 Ravine course NNW, thick brush. -80
Ascend rolling country.

77.50 Ridge brg. NNW. +170
80.40 The cor. to Secs. 14, 15, 22 and 23. -30
Land mountainous, Soil loam and stony, 2nd and 3rd rate.
Very few trees, mostly pine. Most of line in heavy brush.
80.40 chs. of mountainous and brushy lines. July 9, 1898.

40.00 N. 0°26' W. on a RANDOM line bet. Secs. 14 and 15. Var. 14°40' E.
Set temp. $\frac{1}{4}$ sec. corner.
77.40 Fall 14 lks. W. of cor. to Secs. 11 and 14. Thence I run. S. 0°20' E. on the TRUE line bet. Secs. 14 and 15. Var. 14°45' E.
Over brushy mountain spurs.

2.50 Stony ravine course E. -30
Leave scattering pines.

5.50 Spur brg. ENE. +50
8.50 Ravine course NW. -40
15.00 Brow of rolling and gullied mesa. +50
24.00 Descend from S. edge of mesa.
27.25 Ravine course ENE. -40
33.25 Broad spur brg. E. +60
36.40 Ravine course E. -40
37.40 Set a stone 15x10x7 ins. 12 ins. in the ground on a NE slope for $\frac{1}{4}$ sec. corner marked $\frac{1}{4}$ on W. face. Dug pits 15x15x12 ins. N & S of stone $5\frac{1}{2}$ ft. dist. and raised a mound of earth $1\frac{1}{2}$ ft. high $2\frac{1}{2}$ ft. base alongside.

38.70 Brow of mountain brg. E. -50
48.00 Descend steep slopes.
58.50 Bottom of Hughes' Canyon course ENE 100 lks. wide. -250
Spring 8 or 10 chs. above.

71.00 Top of S. bluff. Enter Mesa Mountain. +270
77.40 The cor. to Secs. 14, 15, 22 and 23.
Land mountainous. Soil loam and stony, 2nd, 1st and 3rd rate.
No timber except a few trees at N end of line.
70 chs. mountainous and brushy lines. July 9, 1898.

	From the corner to Sections 33 and 34 in the S E-of the Tp. already described, I run	
	N. 0°26' W. (in the course of the E B of the Tp) on the TRUE line between Sections 33 and 34.	Var. 15° E.
16.00	Descend steep side of mountain through small oaks and large brush. Steep rocky ravine 150 lks. wide, 25 ft. deep, course W of N. just below rock cascades. Springs nearly dry.	-550 350
20.35	Ridge in side of mountain, sloping N. of W.	
31.00	Foot of mountain brg. E & W. in mouth of branch canyons from S.-250	
32.00	Ascend brushy spur hill.	
36.00	Top of hillside sloping E.	+40
39.00	Foot of hill brg. NW & SE and into the Laguna (Castaio) Canada in scattering small trees.	-50
40.00	Set a stone 21x6x5 ins. 15 ins. in the ground for $\frac{1}{4}$ sec. cor. marked $\frac{1}{4}$ on W. face, raised a mound of stones $1\frac{1}{2}$ ft. high $2\frac{1}{2}$ ft. base alongside, from which an	
	Ash 6 ins. dia. brs. N. 32 $\frac{1}{2}$ ° W. 109 lks. dist. marked $\frac{1}{4}$ S BT.	
	A Black Oak 5 ins. dia. brs. N. 29 $\frac{1}{2}$ ° E. 44 lks. marked $\frac{1}{4}$ S BT.	
50.75	Road brg. E & W. Leave trees.	
52.00	Enter wash (dry bed) of river course W. soon NW. 3 ft. deep.	
53.00	Across the wash, bank here runs nearly N. just above mouth of ravine.	
56.50	W. point of a mountain.	+20
59.50	Ravine course SW. Ascend same over broken slopes.	-10
66.15	Mountain ridge brg. E & W. and along E side of cross spur through brush	
73.00	Ravine course SSE.	-50 (+150)
78.75	Spur brg. SE.	+75
80.00	Set a stone 22x5x5 ins. 16 ins. in the ground on NE slope for cor. to Secs. 27, 28, 33 and 34, marked with 1 notch on S and 3 notches on E. edges, raised a mound of stones $1\frac{1}{2}$ ft. high $2\frac{1}{2}$ ft. base alongside. Land mountainous and canyon bottom. Soil, loam, wash and rocky, 2nd, 3rd and 4th rate. Timber, some small oaks S. of the Laguna canyon.	
	59.50 chs. mountainous and brushy.	July 6, 1898.

	EAST on a RANDOM line bet. Secs. 27 and 34.	Var. 14°45' E.
40.00	Set temp. $\frac{1}{4}$ sec. corner.	
80.28	Fall 24 lks. N. of cor. to Secs. 25, 26, 35 and 36. Thence I run N. 89°50' W. on the TRUE line bet. Secs. 27 and 34. Var. 14°50' E. Along the N. side of the mountain, covered with large brush, and small oaks.	
3.00	Ridge descending NNW.	-20'
9.75	Valley descending NNW.	-25
11.60	Ridge descending N.	+30
13.70	Arroyo in brushy valley descending NNE.	-20
20.00	Arroyo in brushy valley descending NNE.	
27.75	Ridge descending to NW.	+50
	Leave scattering wood, open brush.	
28.00	NW angle of mountain. Descend.	
37.80	Foot of slope in gully 4 ft. deep descending to NW.	-150
	Thence along N. side of mountain.	
40.14	Set a stone 23x10x6 ins. 18 ins. in the ground on steep slope to the N. for $\frac{1}{4}$ sec. cor., marked $\frac{1}{4}$ on N. face, raised a mound of stone $1\frac{1}{2}$ ft. high $2\frac{1}{2}$ ft. base on S. side.	
44.50	Begin descent.	
50.40	At foot of mountain into the dry bed of the Lake river, course SSW. soon SW. following the trend of the mountains with channel 20 lks. wide and 2 ft. deep, wash of high water 60 lks. wide.	
52.10	Road brg. N and SW.	+10
56.60	Across the first bottom of the canada.	+20
57.00	Brow of Mesa (2nd bottom) brg. N and WSW.	+20
60.50	Ascend across mountain spurs.	
63.50	Point of spur brg. S.	+50
67.00	Ravine course E of S.	-60
71.40	Spur brg. E. of S.	+80
73.00	Ravine course E of S.	-70
76.25	Spur brg. E of S.	+60
78.50	Ravine, course E of S.	-60
80.28	The cor. to Secs. 27, 28, 33 and 34.	+80

Land mountainous and valley. Soil, loam, stony and wash, 2nd, 3rd and 4th rate. Timber, small oakwood and a few manzanitas.
70.18 chs. mountainous and brushy lines. July 6, 1898.

N. 0°26' W. bet. Secs. 27 and 28. Var. 14°45' E.

Descend NE slope of spur.
9.50 Ravine course SSE. -75
14.25 Top of spur brg. SSE. +120
Along an E. slope ascending.
20.75 Ridge brg. SSW.
22.75 Spur brg. SE. +100
27.30 Ravine course ENE. -100
33.25 Spur brg. E. +90
36.35 Ravine course E. -80
38.75 Spur brg. E.
Enter scattering trees. +60
40.00 Set a stone 18x9x5 ins. 12 ins. in the ground and bedrock on N. slope for $\frac{1}{4}$ sec. cor. marked $\frac{1}{4}$ on W. face, from which a
Manzanita 7 ins. dia. brg. S. 27° W. 26 lks. dist.
Marked $\frac{1}{4}$ S BT.
E stem of a stool white oak 10 in. dia. brg. N. 3° E.
20 lks. dist. marked $\frac{1}{4}$ S BT.
40.21 W stem same stool oak 7 in. dia. in line, cut 2 notches on N & S sides.
Descend precipitous bluff.
41.75 Bottom of rocky, narrow canyon, with springs and cascades. -50
course SE. July 7, 1898.
42.75 Ascend precipitous, rocky bluff, just W. of steep ridge, angle of hillsides.
47.50 Leave trees, top of bluff. +200
52.00 Ridge sloping SE. +75
61.00 Enter small prairie, say 2 acres, which cross near W end.
Leave brush E & W.
64.00 Leave prairie and reenter brush brg. E & W.
64.50 Summit of broad mountain brg. SE. +100
Soon begins gentle descent.
76.00 Gully course NW.
77.50 Ridge, sloping NW. -50
80.00 Set a limestone 30x12x8 ins. seated in bedrock, in a mound of stones on the steep slope of a point of ridge, for cor. to Secs. 21, 22, 27 and 28, marked with 2 notches on S and 3 notches on E edges, and raised a mound of stones 2 ft. high $3\frac{1}{2}$ ft. base on W. side from which the
E. stem of a white oak 20 in. dia. N. 84° W. 90 lks. dist.
marked S. 21 T 7 N R 15 W BT.
Land broken mountains, South 50 chs. North 30 chs. rolling Mountain top.
Soil, of broken country, 4th rate; of mountain top, 8 part loam, 1st and 2nd rates. North slope washed and hardpan, 3rd and 4th rate.
Timber, a few trees, pines and small oaks in middle canyon.
77 chs. mountainous and brushy lines.

EAST on a RANDOM line bet. Secs. 22 and 27. Var. 15°10' E.

Change of Var. due to local causes.
40.00 Set temp. $\frac{1}{4}$ sec. corner.
80.08 Fall 22 lks. S. of corner to Secs. 22, 23, 26 and 27. Thence I run S. 89° 50' W. on the TRUE line bet. Secs. 22 and 27. Var. 15° E.
In scattering pines and small oaks. Descend.
1.00 Steep valley, descending N. 60 lks. wide. -25
3.15 Ridge brg. NNW, through brush. +20
6.50 Ravine course SSW. -40
9.50 Hill ridge sloping S, open brush. +25
13.50 Valley course SW. -30
19.00 Ridge brg. SW. Leave trees.
23.00 Foot of hills, in bottom of Lake Canyon, fence brg. N & S. -40
Enter vineyard.
25.75 Leave vineyard.
25.90 Left bank of Lake River 4 ft. deep.
26.25 Center of stream 10 lks. wide $\frac{1}{4}$ lk. deep, course S.
26.75 W. bank of river.
27.00 Road N & S. enter orchards and improved lands.

The house of Louis H. Mayet, brs N. 50° E. 5.50 chs. dist.
 The house of David Maxwell brs. S. 41° W. 9 chs. dist.
 The house of Cyrus Maxwell brs. S. 11° W. 22 chs. dist.
 29.00 Fence brg. N. & S.
 36.00 Across valley and improved fields.
 40.04 Ascend brushy E point of mountain, general brg. of valley N & S.
 Set a stone 18x10x5 ins. 12 ins. in the ground on W slope 50 lks. N. of
 ridge, descending E, for $\frac{1}{4}$ sec. cor., marked $\frac{1}{4}$ on N. face and raised
 a mound of stones and earth 2 ft. high 3 ft. base on S. side. +60'
 43.35 Ravine or valley descends ENE. -30
 50.50 Spur brg. N. +120
 54.75 Ravine course NE -60
 57.75 Spur brg. N. +70
 60.25 Ravine course NNE. -50
 62.50 Spur brg. NNE. +60
 64.30 Ravine course N. -50
 66.60 Spur brg. NNW. +60
 68.50 Ravine course NNE. -40
 70.50 Spur brg. NNE. +60
 Over a sag sloping NE.
 74.25 Summit, ridge sloping NE. +40
 80.00 Steep stony arroyo 6 ft. deep, course W of N. -20
 80.08 The corner to Secs. 21, 22, 27 and 28. +5
 Land mountainous and valley. Soil, alluvial bottom, 1st rate, hills
 2nd, 3rd and 4th rate. Timber, a few pines and small oaks E of the
 Canada. 67.08 chs. mountainous and brushy lines. July 8, 1898.

 N. 0°26' W. bet. Secs. 21 and 22. Var. 15°10' E.
 Descend the mountain through scattering timber.
 .20 Stony arroyo course NNW. -10
 2.50 Brow of bluff, descend into canyon. -50
 6.00 Foot of bluff, bottom of Dingman's canyon with a small spring run,
 course NE. -120
 6.75 Ascend rocky bluff out of canyon.
 12.00 Brow of bluff brg. NE. +110
 17.00 Top of mountain brg. NE. +30
 24.00 Deep ravine course NW. -100
 27.50 Ridge sloping NE. +80
 33.00 Foot of mountain brg. E & W. just E of the mouth of a branch canyon
 across which the mountains trend NE.
 Enter the Canada of "Pine Canyon". -100
 39.75 Wire fence brg. E & W. Dingman's enclosure.
 Mountain brg. NW. -30
 40.00 Set a stone 16x8x5 ins. 12 ins. in the ground bounded by buried stones
 for $\frac{1}{4}$ sec. cor. marked $\frac{1}{4}$ on W face, from which a
 Black oak 10 in dia. brs. S. 65° W. 140 lks. dist.
 marked $\frac{1}{4}$ S BT.
 Buckeye 8 in. dia. brs. 43° E. 130 lks. dist.
 marked $\frac{1}{4}$ S BT.
 40.10 Enter wash of high water, course from WNW to E., bank 1 ft. high.
 62.50 Principal water channel of the Canada, now dry, course SE.
 65.00 Road brg. WNW & ESE.
 69.50 Leave washes (bottom) brg. ESE, bank 5 ft. high.
 Ascend low base of the mountains.
 80.00 Set a stone 19x14x12 ins. 14 ins. in the ground for cor. to Secs. 15, 16,
 21 and 22, marked with 3 notches on S & E edges, raised a mound of
 stones 2 ft. high 3 ft. base alongside. +60'
 Land, $\frac{1}{2}$ mile, mountainous; $\frac{1}{2}$ mile, even bottom of the Canada.
 Soil mostly hardpan, stony on wash, 3rd and 4th rate.
 Timber, scattering pines nearly the whole mile; a few oaks, manzanitas
 and buckeyes.
 Repeated fires are destroying these woods.
 33 chs. mountainous and brushy lines.

 July 8, 1898.

EAST on a RANDOM line bet. Secs. 15 and 22. Var. 15° E.

40.00 Set a temp. $\frac{1}{4}$ Sec. corner

80.32 Fall 7 lks. S. of corner to Secs. 14, 15, 22 and 23. Thence I run S. 89°57' W. on the TRUE line between Secs. 15 and 22. Var. 14°40' E. Through brush openings.

3.50 Descend bluff. Enter scattering timber. -30

8.00 Ravine in the side of the mountain course NW. -60

9.50 Ridge descending to NW. +30

15.00 Foot of mountains, enter E. end of small valley, prairie bottom, at 3 chs. S. from opening into Hughes' Canyon. -150

18.00 Enter cultivated fields.

30.00 The cabin of R. B. Burns brs. S. 2.75 chs. dist.

40.16 Set a stone 19x7x4 ins. 13 ins. in the ground, in the middle of the valley, (bottom land about 6 chs. wide) for $\frac{1}{4}$ sec. corner marked $\frac{1}{4}$ on N. face, from which a

Pine 16 ins. dia. brs. S. 22 $\frac{1}{2}$ ° E. 249 lks. dist. marked $\frac{1}{4}$ S BT.

Pine 10 ins. dia. brs. N. 4 $\frac{1}{2}$ ° W. 280 lks. dist. marked $\frac{1}{4}$ S BT.

56.50 Leave plowed fields brg. N & S.

63.00 Foot of brushy mountain spurs, leave valley and trees, brg. N&S. +40

66.00 Spur sloping S. +60

69.50 Ravine course S. -50

71.00 Spur sloping S. +60

75.50 Foot of spurs, enter a bay of Pine Canyon, brg. N & S. -150

80.32 The cor. to Secs. 15, 16, 21 and 22.

Land, mesa, valley and mountainous.

Soil, alluvial and washed, 1st, 2nd and 3rd rate.

Timber, occasional pines and a few scrub oaks.

27.50 chs. mountainous and brushy lines. July 19, 1898.

N. 0°26' W. bet. Secs. 15 and 16. Var. 15° E.

2.00 Foot of precipitous side of mountain, over which I measure by the following triangulation.

From the sec. corner called "A", I send a flag to brow of mountain to point called "B", brg. N. 0°26' W., also from A turn off angle 90° W. (S. 89°34' W.) and in this brg. measure 8 chs. to "C" for a base, which point "C", brs. S. 32°54' W. from "B"; hence the distance triangulated is 12.16 chs. Set a post in mound of earth marked W P for witness point; thence forward from "B" 14 lks.

12.30 Enter rolling top of Mesa Mountain. +350

Through standing blackened poles of heavy brush recently burned.

18.50 Descend from swell of mountain top. +30

19.90 Ravine course E. -25

21.00 Ridge brs. E. +20

21.60 Arroyo of small valley brg. E. -15

23.75 Ridge brg. NE. +30

27.25 Ravine course E. -10

28.50 Ridge brg. E. +15

29.35 Ravine course E. -15

37.25 Summit of W slope of round hill. +60

40.00 Bottom of valley course W. -20

Set a stone 17x8x4 ins. 12 ins. in the ground, just N. of a slight arroyo/coursing W, for $\frac{1}{4}$ sec. cor., marked $\frac{1}{4}$ on W. face. Dug pits 18x18x12 ins. N & S. of stone 5 $\frac{1}{2}$ ft. dist. and raised a mound of earth 2 ft. high 3 $\frac{1}{2}$ ft. base alongside.

Leave brush and enter prairie and fields, brg. E & W.

48.50 Summit of mountain brg. E & W. +50

Gently descend.

56.00 Enter orchard of Albert Rhodes.

70.50 Road E & SW. The house of Albert Rhodes brs. S. 40° W. about 10 chs. distant.

Leave prairie and fields, enter open and burnt stumps. -80

73.00 Ridge sloping W, just W of stony ridge brg. N. +15

77.40 Valley sloping W. -25

79.00 Top of spur brg. N. +20

80.00 Set a stone 22x10x8 ins. 16 ins. in the ground for cor. to Secs. 9, 10,

15 and 16, marked with 4 notches on S and 3 notches on E edges, raised a mound of stones $1\frac{1}{2}$ ft. high $2\frac{1}{2}$ ft. base alongside. Land, rolling and mountain slopes. Soil, alluvial and rocky slopes, 1st, 2nd and 4th rate. No timber. 49.50 chs. mountainous and brushy lines. July 21, 1898.

	EAST on a RANDOM line bet. Secs. 10 and 15.	Var. 15° E.
40.00	Set temp. $\frac{1}{4}$ sec. corner	
50.14	Int. the W B of Sec. 11 and 3 chs. N. $0^{\circ}29'$ W. of the W. cor. of Secs. 11 and 14, set a stone $24 \times 8 \times 8$ ins. 18 ins. in the ground for E (closing) corner to Sections 10 and 15, marked with 4 notches on S, 2 notches on E & N, and O O on W faces; raised a mound of stones 2 ft. high 3 ft. base at W side of cor. stone, from which a Pine 30 ins. dia. brs. S. $67\frac{1}{2}^{\circ}$ W. 105 lks. dist. marked O O S 15 BT. Thence I ran	
	WEST on the TRUE line bet. Secs. 10 and 15.	Var. $14^{\circ}45'$ E.
	Change of Var. is due to local causes.	
	Descend stony slope, through scattering timber and open brush.	
2.00	Pine 12 in. dia., line tree.	
2.00	Arroyo, bottom of ravine course SE.	
3.75	Bottom of main ravine from WSW, course E. 20 lks. above junction of last arroyo.	-80
7.65	Nose of hill pointing S.	+60
9.75	Ravine from N to SE. Ascend.	-50
	Leave pines enter thick brush.	
16.60	Top of spur brg. ESE.	+200
21.40	Arroyo in ravine course SE.	-100
22.30	Ridge brg. N & S.	+15
24.30	Arroyo course NE.	-10
32.10	Top of spur brg. NE.	+120
35.30	Ravine course NE.	-60
40.07	Set a stone $18 \times 16 \times 6$ ins. 14 ins. in the ground and a mound of stones on E slope for $\frac{1}{4}$ sec. cor. marked $\frac{1}{4}$ on N. face. Dug pits $18 \times 18 \times 12$ ins. E & W of stone $5\frac{1}{2}$ ft. dist. and raised a mound of earth $1\frac{1}{2}$ ft. high $3\frac{1}{2}$ ft. base alongside.	
43.50	Top of spur brg. NE.	+80
45.85	Ravine course NE.	-60
50.00	Spur brg. ESE with scattering trees.	+80
56.00	Road brg. NE & SW. Leave brush and trees, enter N end of prairie with border of trees and brush.	
59.50	Head of valley course NE.	
62.00	House of Fred Truedell brs. S. about 20 chs. dist.	
67.00	Leave prairie, enter burnt brush brg. N & S and descend.	+75
70.00	Ravine course N.	-75
73.00	Spur brg. N.	+80
75.00	Stony ravine course N.	-60
79.00	Stony spur brg. N.	+70
80.14	The corner to Secs. 9, 10, 15 and 16.	
	Land mountainous. Soil, loam and washed slopes, 1st, 2nd & 3rd rate. Timber, a few pines.	
	63.14 chs. mountainous and brushy lines.	July 22, 1898.
	From the corner to Secs. 32 and 33 in the S B of the Tp, already described, I run (in the course of the E B of the Tp), N. $0^{\circ}26'$ W. bet. Secs. 32 and 33.	Var. $15^{\circ}40'$ E.
	Change due to unknown local causes.	
	Through heavy brush, over stony ground, ascend along W. slope.	
1.00	At a + mark cut on top of W end of rock cropping out of the side of the mountain, 5 ft. high 2 ft. across, on steep ridge or angle of the mountain slopes, descending NW.	
	Descend rolling slope facing N.	
16.00	Gully bottom of ravine course NNW.	-300
21.00	Top of N. slope (bluff) of ravine.	+40
26.00	Foot of mountain brg. SW and soon ENE in dry channel of Lake River 50 lks. wide 3 ft. deep and following the trend of the mountains.	-200
	Leave mountain brush (oak and greasewood) and a skirting of scrub oaks, enter bottom of Laguna Canada and thickets of willows, over washes of high water.	
33.50	Leave willows and river wash, N bank 6 ft. high.	

34.00 Road brg. WSW and E. Enter greasewood brush.
35.75 Foot of hills. Ascend.
37.25 Top of spur brg. ESE about 5 chs. to point. +60
38.30 Foot of ridge, enter branch valley with open brush. -20
40.00 Set a stone 16x8x8 ins. 11 kns. in the ground for $\frac{1}{4}$ sec. cor. marked $\frac{1}{4}$ on W face. Dug pits 18x18x12 ins. N & S. of stone 5 $\frac{1}{2}$ ft. dist. and raised a mound of earth 1 $\frac{1}{2}$ ft. high 3 $\frac{1}{2}$ ft. base alongside.
41.75 Ascend brushy ridge.
43.50 Top of spur brg. SE 3 chs. to its point. +30
45.50 Foot of ridge into branch valley. -50
48.00 Arroyo 20 lks. across. Ascend.
52.50 Top of crooked spur brg. E. +70
58.50 Ravine, head of valley. Descend SE. -40
Ascend uneven slopes.
68.50 Shoulder of spurs, brg. SW and SSE.
70.50 Top of mountain just below its W end. +225
Descend steep slope facing NNW, with scattering manzanitas and clumps of rank brush.
79.50 Foot of mountain, in rock of channel of Aliso or Deer Canyon, 15 lks. wide 6 ft. deep, with water pools, and 50 lks. above Rock Springs; also with borders of sycamores, course of creek SSW. -360
80.00 Set a stone 22x9x8 ins. 16 ins. in the ground on SE slope for cor. to Secs. 28, 29, 32 and 33, marked 1 notch on S and 4 notches on E. edges from which a
Sycamore 4 in. dia. brs. N. 43° E. 29 lks. dist.
marked S 28 T 7 N R 15 W BT.
Sycamore 4 in. dia. brs. S. 38 $\frac{1}{2}$ ° E. 60 lks. dist.
marked S 33 T 7 N R 15 W BT. +15
No other trees in other sections. Land mountainous and valley.
Soil, stony, washed slopes, and wash, 2nd and 3rd rate.
Timber small oaks, willows, manzanita and sycamore.
78 chs. mountainous and brushy lines. July 12, 1898.
- - - - -
EAST on a RANDOM line bet. Secs. 28 and 33. Var. 15° E.
Change of Var. due to local causes.
40.00 Set temp. $\frac{1}{4}$ sec. corner.
80.36 Fall 11 lks. N. of cor. to secs. 27, 28, 33 and 34. Thence I run N. 89°55' W. on the TRUE line bet. Secs. 28 and 33. Var. 14°45' E.
Across barren stony spurs brg. S. through sparse brush. Ascend.
1.35 Ridge of spur brg. SE. +20
4.75 Ravine course S. -75
7.60 Spur brg. S. +80
10.25 Ravine course SE. -70
12.20 Spur brg. SE. +75
14.50 Valley brg. S. -40
17.00 Spur brg. SE. +50
22.00 Ridge brg. SSW.
30.50 Ravine course S. -150
37.00 Spur brg. S. +180
40.18 Into bottom of rocky ravine course S. Out $\frac{1}{4}$ over + mark -100
for $\frac{1}{4}$ sec. cor. on S. face of rock precipice at E. side of arroyo of a wet weather cascade, and 20 lks. W. from SE angle of rock out of ground
The marks are 8 ft. above the foot of the cascade and 10 ft. below top of (rocks).
41.65 Branch arroyo course SE. Ascend.
44.00 Top of spur brg. SE. +120
46.00 Valley descending S. -40
47.80 Ridge sloping SSW. +50
52.50 Ravine course SSW. -125
57.75 Spur brg. S. +125
63.75 Ravine course S. -125
66.75 Spur brg. S. connecting mountain at SW with mountain N, +150
descend steep slope and along S side of valley formed by mountains N & SW., a few small oaks in valley and clumps of small sycamores at foot of mountains.
80.00 Foot of mountain in water channel of Aliso canyon 10 lks. across, 5 ft. deep, rock bottom. -375
80.36 The cor. to Secs. 28, 29, 32 and 33. +15
Land mountainous. Soil, stony, and alluvial, 2nd and 4th rates.
No timber except the few small oaks and sycamores on last slope.
80.36 chs. mountainous and brushy lines. July 12, 1898.

	N. 0°26' W. bet. Secs. 28 and 29.	Var. 15° E.
	Through small sycamores and high bushes.	
3.30	Ridge of side of mountain sloping E.	+30
7.75	Spur or ridge of mountain sloping NE.	+80
	Descend rocky slope.	
8.25	Arroyo bottom of valley course ENE.	-20
10.00	Leave trees and taller brush.	
17.75	Ridge descending E.	+120
24.00	Sag or bottom of valley.	
30.00	Ridge on side of mountain sloping E.	+100
36.25	Ravine course E.	-120
38.00	Ridge descends E.	+50
40.00	Set a quartzose stone 24x8x6 ins. 18 ins. in the ground on steep E. slope for $\frac{1}{4}$ sec. cor., marked $\frac{1}{4}$ on W. face, raised a mound of stones 2 ft. high 3 ft. base on a ledge of rocks 5 ft. S. of cor., from which A + mark with BR out on a rock 2x3x6 ft. out of ground, brs. S. 46° E 5 lks. dist.	
41.00	Ravine brg. E., soon SE.	-40
42.00	On point of spur sloping SSE.	+25
45.00	Arroyo 25 lks. across course SE, soon joins the preceding ravine. Ascend mountains.	-10
58.50	Top of ridge or angle of slopes of mountain. Along the steep E. side of mountain.	+350
66.00	Descend the slope facing NE.	
70.00	Dry gully, bottom of narrow canyon 15 lks. wide with precipitous sides, course SSE.	
80.00	Ascend steep, stony side of the mountain facing SW. Set a stone 26x10x8 ins. 20 ins. in bedrock, and a mound of stones, 15 lks. E. of an arroyo course S. near top of slope for cor. to Secs. 20, 21, 28 and 29, marked with 2 notches on S. and 4 notches on E. edges, covered mound with earth.	+220
	Pits impracticable. Land mountainous. Soil, alluvial, stony and washed slopes, mostly 3rd and 4th rate. No timber except a few sycamores at beginning of the line and a few oaks in the canyons. 80 obs. mountainous and brushy lines.	
	July 20, 1898.	
	EAST on a RANDOM line bet. Secs. 21 and 28.	Var. 15°05' E.
40.00	Set temp. $\frac{1}{4}$ sec. corner.	
80.20	Fall 28 lks. S. of corner to Secs. 21, 22, 27 and 28; thence I run S. 89°48' W. on the TRUE line bet. Secs. 21 and 28. Var. 15°10' E. Through scattering timber and open brush.	
	Descend uneven stony slope.	
1.90	Bottom of deep ravine, descending N., springs of water 3 or 4 obs. below/	-50
	Leave trees, ascend.	
8.25	Top of mountain ridge, sloping N.	+150
11.75	Arroyo valley sloping N.	-80
18.75	Top of N. side of mountain.	+120
	Descend and into scattering timber.	
25.75	Deep ravine or branch canyon 2.00 obs. above junction with Dingman's canyon.	-200
27.00	Top of point of spur.	+30
30.75	Gross reef of rocks 20 ft. wide brg. N & S and along N slope of mountain.	
40.10	Point for $\frac{1}{4}$ sec. cor. falls on crumbling sliding slope in sag or slight valley descending N.	
41.60	Set a stone 24x8x4 ins. in a mound of stones on top of a reef of rock near the beginning of its steep slope over N. point of a narrow, rocky spur and about 1 ch. S. and 80 ft. above the S. fork of Dingman's canyon, for a witness corner to the $\frac{1}{4}$ sec. cor., marked $\frac{1}{4}$ W C on N face from which a	
	Pine 20 ins. dia. brs. S. 25 $\frac{1}{4}$ ° E. 48 lks. dist. marked W C $\frac{1}{4}$ S BT.	
	Pine 24 ins. dia. brs. N. 29 $\frac{1}{4}$ ° W. 30 lks. dist. marked W C $\frac{1}{4}$ S BT.	
	Descend precipitous slope.	
43.10	Deep ravine course NNE.	-70
	Ascend.	
47.00	Top of hill lying E & W.	+100
53.00	Valley course NNW. Leave trees.	-40
67.00	Sloping ridge on N side of mountain.	+60

	Over rolling mountain top.	
76.00	Divide between the Pine and Laguna Canyons, brs. WNW & ESE.	+50
80.20	The corner to Secs. 20, 21, 28 and 29.	
	Land mountainous. Soil stony, 3rd and 4th rate.	
	Timber, scattering oaks and pines in canyons.	
	80.20 chs. mountainous and brushy lines.	July 20, 1898.
	N. 0°26' W. bet. Secs. 20 and 21.	Var. 15°05' E.
1.60	Top of mountain divide, brg. E& W.	
2.00	Arroyo of small ravine course E.	-10'
2.50	Ridge spur brs. E.	+15
10.50	Descend bluff bearing E. (A few trees)	
14.00	S fork of Dingman's Canyon from SW and bends to course E.	-100
19.25	Top of N bluff brg. E. Gently ascend.	+110
33.00	Top of broad spur mountain. Descend rolling N. slope of mountain.	
40.00	Set a stone 14x12x4 ins. 10 ins. in the ground for $\frac{1}{4}$ sec. cor. marked $\frac{1}{4}$ on W face, raised a mound of stones $1\frac{1}{2}$ ft. high $2\frac{1}{2}$ ft. base at W side.	-50
	Continue rolling descent.	
47.50	Enter pine openings, continue descent over a point of the mountain.	
60.00	Bottom of Forsyth's Canyon course N. 30° E. just W of sharp point of mountain, formed by branch from SSE.	-300
	Cross rills and springs of water.	
62.50	Top of sharp ridge spur brg. NE.	+60
65.50	Dry branch canyon course NE.	-65
67.50	Ridge sloping NE.	+40
69.00	Head of valley descending E. Leave timber.	
	Ascend along SE slope of mountain.	
76.00	Foot of mountain rising to the SW on elevated base or step in the side of the mountain.	
80.00	Set a stone 12x8x6 ins. 10 ins. in the ground on the NE slope for cor. to Secs. 16, 17, 20 and 21 marked with 3 notches on S and 4 notches on E edges, raised a mound of stones 2 ft. high 3 ft. base alongside, Land mountainous. Soil, stony and washed, 2nd, 3rd and 4th rate. Timber, fir, pines, along Forsyth's Canyon.	
	80 chs. mountainous and brushy lines.	July 25, 1898.
	EAST on a RANDOM line bet. Secs. 16 and 21.	Var. 15° E.
40.00	Set temp. $\frac{1}{4}$ sec. corner.	
80.26	Fall 62 lks. S. of corner to Secs. 14, 15, 21 and 22. Thence I run S. 89°33' W. on the TRUE line bet. Secs. 16 and 21. Var. 15° E.	
	Along the N. side of Pine Canyon, in burnt and open brush.	
8.00	Top of ridge 20 ft. high about 2 chs. S. of foot of mountain and 5 chs. N. of its point. Descend the ridge.	
28.50	About 2 chs. S. of a point of the mountain rising N, angle in trend of Canada from NW to nearly E.	
31.25	Road brg. NW & SE enter scattering timber.	
36.00	Road brg. NE & SW.	
39.70	Enter wash of high water, course S.	
40.13	Set a stone 14x10x6 ins. bounded by stones 10 ins. in the wash for $\frac{1}{4}$ sec. cor. marked $\frac{1}{4}$ on N. face, from which a Pine 20 ins. dia. brs. S. 69° W. 175 lks. dist. marked $\frac{1}{4}$ S BT. Pine 8 ins. dia. brs. N. 134° E. 165 lks. dist. marked $\frac{1}{4}$ S BT.	
	House of Forsyth brs. S. 46° W. about 15 chs. dist.	
41.30	Leave wash brg. S., soon bends SE.	
42.50	Leave bottom of the Canada and ascend isolated hill, through thick brush. Leave trees.	
48.00	About 2 chs. S. of round top of hill (hill 10x8 chs. +80)	
58.00	Foot of hill in bottom of valleys, brg. ESE & NW	-60
	Enter scattering trees and clump of thickets.	
69.75	Leave valley brg. N & S. Ascend brushy mountain.	
73.00	Top of spur from SW brg. N.	+45
77.75	Head of ravine sloping N. 150 S of junction.	
79.25	N. point of spur brg. NE.	+30
79.75	Short ravine brg. NE. Ascend.	-20
80.26	The corner to Secs. 16, 17, 20 and 21.	+30
	Land, Canada bottom and mountainous.	
	Soil, wash, loam and hardpan, 2nd, 3rd and 4th rate.	
	Timber, a few pines and small oaks.	
	56 chs. mountainous and brushy lines.	July 25, 1898.

	N. 0°26' W. bet. Secs. 16 and 17.	Var. 15° E.
	Descend brushy mountain.	
1.40	Bottom of ravine course from SW to E.	-65
4.25	Ridge brg. E.	+40
10.20	Foot of mountain in a skirting of small oaks, enter bottom of Pine Canyon brg. E & W. and scattering pines.	-200
12.70	Road brg. E. & W.	
14.70	Enter high water wash, course E.	
18.50	Leave wash and bottom brg. E & W.	
	Ascend bluff about 20 feet to the brushy bench, base of mountain. Leave trees.	
35.00	Foot of steep, stony side of mountain brg. E & W. and ascend.	
40.00	Set a stone 21x10x8 ins. 16 ins. in the ground on steep slope 25 lks. E of ridge or angle. Descending the mountain side, ESE, for $\frac{1}{4}$ sec. corner marked $\frac{1}{4}$ S on W face, raised a mound of stones $1\frac{1}{2}$ ft. high 3 ft. base at N side.	
45.25	Brow of slope.	+700
	Over rolling top of Mesa mountain.	
46.00	Enter E. end of small prairie brg. NE & SW.	
49.00	Summit of mountain divide, brg. NW & E.	
51.00	Leave prairie brg. E & W. Enter timber and dense brush. Descending.	
58.00	Valley course NE.	-50
61.50	Spur brg. NE.	+30
64.00	Ravine course NE.	-70
68.00	Spur brg. NE.	+30
70.00	Ravine course NE.	-40
72.00	Spur brg. NE.	+20
74.25	Ravine course ENE.	-40
77.00	Spur brg. ENE.	+30
	Descend slope of small oaks.	
80.00	Set a stone 20x8x7 ins. 15 ins. in the ground on N. slope for cor. to Secs. 8, 9, 16 and 17, marked with 4 notches on the S & E edges, from which a	
	Black oak 5 in.dia. brs. N. 10 $\frac{1}{2}$ ° W. 40 lks.dist. marked S 8 T 7 N R 15 W BT.	
	White oak 4 in.dia. brs. S. 78 $\frac{1}{2}$ ° E. 19 lks.dist. marked S 16 T 7 N R 15 W BT.	
	White oak 4 in.dia. brs. S. 8° W. 16 lks.dist. marked S 17 T 7 N R 15 W BT.	
	Black oak 5 in.dia. brs. N. 53° E. 20 lks.dist. marked S. 9 T 7 N R 15 W BT.	
	Land mountainous and valley. Soil, loam, wash and stony, 2nd, 3rd, and 4th rate. Timber, a few pines and small oaks.	
	66.70 chs. mountainous and brushy lines.	July 25, 1898.

	EAST on a RANDOM line bet. Secs. 9 and 16.	Var. 15°05' E.
40.00	Set temp. $\frac{1}{4}$ sec. corner.	
80.30	Fall 80 lks. S. of cor. to Secs. 9, 10, 15 and 16. Thence I run S. 89°26' W. on the TRUE line bet. Secs. 9 and 16. Var. 15° E.	
	Through burned brush, descend stony hill.	
3.50	Bottom of ravine course N.	-80
6.75	Spur brg. N.	+60
14.00	Ravine course N. Enter dense brush.	-80
16.00	Spur brg. N.	+60
21.25	Ravine course N.	-75
23.75	Spur brg. NNE.	+60
26.75	Ravine course NNE.	-70
30.50	Spur brg. NNE.	+60
35.00	Ravine course NNE.	-40
37.00	Spur brg. NNW.	+70
40.15	Set a stone 18x16x10 ins. 12 ins. in the ground on W. slope for $\frac{1}{4}$ sec. corner marked $\frac{1}{4}$ on N face, raised a mound of stones $1\frac{1}{2}$ ft. high 2 $\frac{1}{2}$ ft. base alongside.	
40.50	Foot of slope in arroyo course NNW at junction of ravine, arroyos from SE & SW.	-75
44.50	Spur brg. N.	+60
50.25	Enter scattering pines.	

54.00	Bottom of valley, branch canyon course N.	-100
55.50	Spur brg. NNE.	+40
58.00	Ravine course N. about 50 lks. above junction with canyon from W to NE. Along side of hills on S. side of canyon.	(-30)
62.75	On N. point of a hill opposite junction of stony arroyos in ravines	+25
67.25	Branch ravine course NE.	-20
70.50	Point of spur from SSW bends N. Descend along N. slope of same.	+30
80.30	The corner to Secs. 8, 9, 16 and 17. Land mountainous. Soil, loam, some stony 2nd rate. Timber, scattering pine and small oaks. 80.30 chs. mountainous and brushy lines.	
July 25, 1898.		

From the corner to Secs. 31 and 32 in the S B of the Tp, already described, I run (in the course of the E B of the Tp), N. 0°26' W. bet. Secs. 31 and 32. Through thick brush.		
		Var. 15°05' E.
1.00	Ascend hillock.	
3.50	Top of hillock on spur brg. WSW. Descent.	+100
9.00	Ravine course S of W, soon enters valley from ENE.	-100
40.00	Ascend over rolling ground on E slope of low spur from the N. Set a manzanita post 3 ft. long 4 ins. sq. with 2 cubical pieces of white quartz in a hole 8 ins. deep, dug in the bedrock at top of the spur, for $\frac{1}{4}$ sec. corner, marked $\frac{1}{4}$ on W face, raised a mound of stones and earth $1\frac{1}{2}$ ft. high around post. Pits impracticable.	
41.00	Top of hill on the spur from the NNW to SSW.	+200
52.50	Ascend along E side of ridge. Cross mountain brg. E & W. in W. side of a saddle in its crest. Descend.	+250
69.00	Steep valley. Descend NW.	
73.50	Rocky ridge, Descend WW.	
74.50	Enter thicket of small oaks and alders.	
75.50	Foot of slope in arroyo with springs 5 ft. deep 10 lks. across, course SW.	-300
76.50	Leave thicket and trees.	
80.00	Set a stone 24x12x3 ins. 20 ins. in bedrock and mound of stones at head of short valley or draw, descending ESE for cor. to Secs. 29, 30, 31 and 32, marked with 1 notch on the S and 5 notches on E edges, raised a mound of earth $1\frac{1}{2}$ ft. high and $3\frac{1}{2}$ ft. base alongside. Regular pits impracticable. Land mountainous. Soil, loam and stony, 3rd and 4th rate. Timber, a little oakwood in ravines. 80 chs. mountainous and brushy lines.	
July 13, 1898.		

40.00	EAST on a RANDOM line bet. Secs. 29 and 32.	Var. 14°50' E.
50.12	Set a temp. $\frac{1}{4}$ sec. corner. Fall 30 lks. N. of corner to Secs. 28, 29, 32 and 33. Thence I run N. 89°47' W. on the TRUE line bet. Secs. 29 and 32. Var. 14°45' E. Ascend stony mountains through open brush.	
4.00	Point of spur brg. SSE.	+100
7.00	Ravine course ESE.	-50
9.25	Spur brg. SSE.	+100
10.00	Ravine course SE.	-30
14.50	Ridge brg. SE.	+80
17.00	Spur brg. SE.	+40
19.50	Ravine course SSE.	-30
21.75	Spur brg. SSW.	+60
31.00	Canyon course ESE with oaks and tangles of vines and brush. Ascend rocky mountain.	-150
34.00	Steep arroyo from W to NE.	
40.06	Set a stone 26x10x8 ins. in a ledge against the S face of rock cropping out of steep hillsides, 6 ft. by 2 ft. high, 50 lks. N. of the arroyo of valley, descending to the E for $\frac{1}{4}$ sec. cor., marked $\frac{1}{4}$ on top of stones, bounded the same by stones and raised a mound of stones $1\frac{1}{2}$ ft. high $2\frac{1}{2}$ ft. base on the rock N side.	+200
56.75	Top of mountain brg. N & S. Along the S side of hill.	+550

60.00	Top of shoulder of spur brg. nearly W. Descend along N. side of ridge.	
71.00	Ravine course NW.	-150
72.00	Hill sloping N. Descend.	+25
77.00	Arroyo, bottom of valley course SW. Ascend in slight valley or draw.	-225
80.12	The cor. to Secs. 29, 30, 31 and 32. Land mountainous. Soil, stony and rocky, 3rd and 4th rate. Timber, a few oaks in deep canyons. 80.12 chs. mountainous and brushy lines.	+20
July 13, 1898.		

	WEST on a RANDOM line bet. Secs. 30 and 31.	
40.00	Set temp. $\frac{1}{4}$ sec. corner.	
84.00	Int. the W B of the Tp. at 44 lks. N. of corner to Secs. 30, 31 (25 & 36) already described. Thence I run N. $89^{\circ}42'$ E. on the TRUE line bet. Secs. 30 and 31. Var. $14^{\circ}45'$ E.	
1.25	Into middle of Turtle Creek 25 lks. wide 2 ft. deep course SW., in its bed from ESE to nearly S course with rock basins and stony bottom and pools of water.	
2.00	Across bottom of canyon. Ascend steep rocky mountain.	
9.25	Top of spur sloping S, terminates about 4 chs. S. in forks of canyons. Descend.	+200'
11.00	Sag or valley sloping SSE.	
13.25	Ridge sloping S.	
19.75	Foot of Mt in Elbow canyon course SSW with stream 6 lks. wide, 1 in deep about 1 ch. above the junction of a branch with water come from the E.; these streams are tributary to Turtle or Fish Creek. This bottom is densely covered with alders and other small trees.	
21.00	Ascend steep, rocky slopes and along S side of mountain.	
27.80	Top of spur brg. S.	+200
29.50	Sag, descending S.	-40
31.50	Ridge, descending SSW.	+50
34.25	Bottom of ravine 30 lks. wide course W with precipitous rocky sides, for height of 30 ft.	-60
35.00	Top of rocks, continue ascent.	+30
39.75	Top of mountain brg. S. (descend)	+150
41.50	Rocky ravine course S. (ascend)	-80
43.00	Top of ridge sloping S.	+60
43.50	As the point for cor. falls on slipping surface of smooth hard rock, on which it is impracticable to set a permanent monument, I here plant a stone $26 \times 8 \times 6$ ins. 19 ins. in the ground and bedrock on the S. slope of the mountain for a witness cor. to the $\frac{1}{4}$ sec. cor. at 50 lks. W. of true cor. marked $\frac{1}{4}$ on N face and W C on the top end and raised a mound of stones $1\frac{1}{2}$ ft. high $2\frac{1}{2}$ ft. base at N. side.	
43.60	Arroyo, descending SSW. Ascend.	
44.00	Point for $\frac{1}{4}$ sec. cor. on rock slope.	
46.25	Top of mountain brg. S. near the beginning of S. end of slope	+75
49.50	Ravine course W.	-70
51.25	Spur brg. SE.	+60
54.25	Ravine course SSW.	-70
58.00	Spur brg. S.	+60
60.25	Ravine course S.	-50
64.75	Spur brg. S.	+60
67.50	Ravine course S.	-70
69.00	Spur brg. S.	+40
70.50	Ravine course S.	-35
73.25	Spur brg. S.	+25
76.25	Ravine course S.	-30
77.75	Spur brg. S.	+20
80.25	Ravine course SSW.	-20
83.00	Spur brg. SW.	+50
84.00	The cor. to Secs. 29, 30, 31 and 32. Land mountainous. Soil, rocky 3rd and 4th rate. Timber, a few small oaks and alders in the deep canyons. 84.00 chs. mountainous and brushy lines.	-25
July 14, 1898.		

North $0^{\circ}26'$ W. bet. Secs. 29 and 30. Va. $14^{\circ}50'$ E.

Through open brush, ascend.

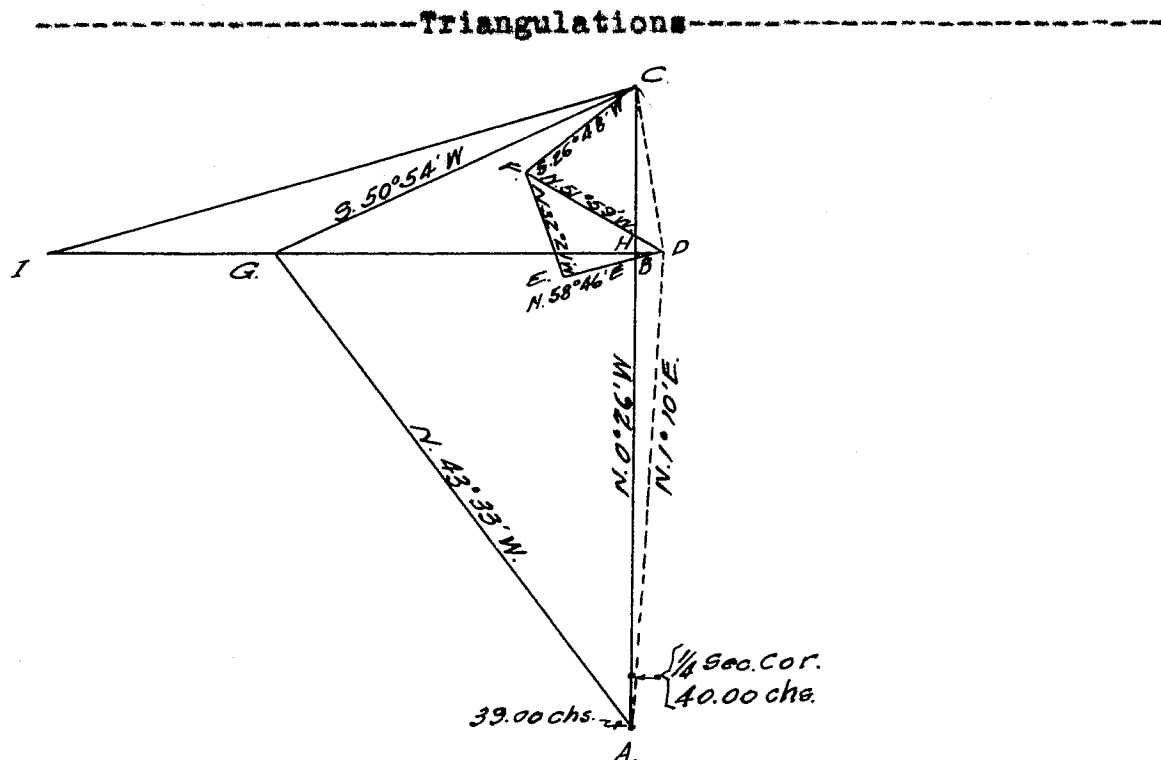
5.50	Side ridge brg. E.	+100
16.00	Arroyo in valleys course S.E.	-40
18.50	Ridge brg. S.E.	+50
21.25	Ravine or valley course S.E.	-50
27.75	Top of mountain brg. W.	+250
37.25	Ravine course W. Ascend	-80
39.00	Brow of spur brg. W.	+50
	Enter heavy brush	
39.75	Descend rocky slope	
40.00	Set a stone $18 \times 14 \times 5$ ins. 12 ins. in the ground and mound of stones covered with earth, for $\frac{1}{4}$ sec.cor. marked $\frac{1}{4}$ on W.face, raised a mound of stones $1\frac{1}{2}$ ft.high $2\frac{1}{2}$ ft.base alongside. Stony ground. Pits impracticable.	

As the country forward is very rough, broken with precipitous slopes and deep canons, I measure the next half by triangulation as follows:

I set back 1.00 ch. to the top of the spur to the point 39.00 chs. in this sec. line, for a station "A"

Thence I range flags forward

North $0^{\circ}26'$ W. to mark points on the bdy. line called "B" on a flat spur near the next cor. and "C" on shoulder of a spur in the side of the mountain beyond.



At B I turn off the bearing N. $58^{\circ}46'$ E. in which marked point "D"; and reversed the bearing S. $58^{\circ}46'$ W. in which marked point "E"; repeated the measure of the line DE and find it 5.17 chs. long for a base. Set a flag also at F., on apex of a hill (in the spur from C), which brs. N. $32^{\circ}21'$ W. from "E"; hence I find dist. DF = 15.384 chs. for a new base. From "C", the point "D" brs. S. $2^{\circ}29'$ E. and "F" brs. S. $26^{\circ}48'$ W. hence I find CD = 30.851 chs. for a new base.

From the point "D" I also mark a line S. 89°38' W. and set a flag at point "G" on the mountains across the canons, which brs. S. 50°54' W. from "G"; hence I find GD = 39.576 chs. which I use for a base. From "A" the point G brs. N. 43°33' W. and D., brs. N. 1°10' E. hence I find AD = 41.01 chs., I now find H., the intersection of the lines AG and GD, which is 30.83 chs. S. from G., and 41.00 chs. N. 0°26' W. from "A". The point H. is therefore 80.00 (39.00+41.00) chs. on the line bet. Secs. 29 and 30.

Continuing description of the line from $\frac{1}{4}$ sec. cor.

Descend rocky slope.

46.00	Ravine course W.	-70
49.50	Spur brs. W.	+60
55.50	Canon brg. W. SW.	-200
78.50	Spur brg. W. SW.	+100

At intersection point "H" as found by the foregoing triangulations I set a stone 20x8x6 ins. 15 ins. in the ground on a N. slope, for cor. to Secs. 19, 20, 29 and 30, marked with 2 notches on the S. and 5 notches on E. edges; dug pits 18x18x12 ins. in each Sec. 5 $\frac{1}{2}$ ft. dist. and raised a mound of earth 2 ft. high 4 ft. base alongside. Land mountainous, soil, rocky 3rd and 4th rates. No timber. 80.00 chs. mountainous and brushy lines.

July 26, 1898.

East on a random line bet. Secs. 20 and 29. Var. 14°55' E.

40.00	Set a temp. $\frac{1}{4}$ sec. cor.
74.00	At brow of precipitous slope into the head of deep canon, course to SE and offset N. 150 lks. to pass the same.
78.50	Offset S. 150 lks. returning to the random line.
80.20	Fall 12 lks. N. of cor. to Secs. 20, 21, 28 and 29.

Thence I run
N. 89°55' W. on the true line bet. Secs. 20 and 29.

Var. 15°05' E.

Change of Var. due to local causes.

Over broken mountain top, in open brush.

.15	Bottom of gully course S.	
.80	Top of ridge, (spur) brg. SE.	+20
1.20	Gully course S. SE.	-10
1.75	Ridge brg. S. brow of precipitous bluff into head of canon.	+15
	As the sec. cor. is near and visible from both offset points and the Alignment was preserved without regard to the slight offset, no witness points have been marked.	
3.75	Bottom of canon descending swiftly to the SE., a few trees here	-80
6.00	Brow of bluff, W. side of canon.	+100
	As the sec. cor. is near and visible from both offset points and the alignment was preserved without regard to the slight offset, no witness points have been marked.	
	Ascend broad top of mountain. Low brush.	
8.70	Summit of mountain brg. N. & S. 75 lks. N.W. of peak or hill	
	Descend.	+20
10.70	Enter ravine brg. NW. on slope. Along side hill sloping N.	
12.25	Leave ravine sloping NW.	
15.25	Ridge sloping N.	
18.00	Ridge sloping NW.	
22.50	Canon course W. SW. soon SW.	-150
23.75	Spur brg. SW.	+20
25.00	Narrow ravine 20 ft. deep course S.	
31.00	Ridge brg. SW.	+15
35.75	Ravine course SW.	-75
39.00	Ridge, slopes NE. on hill terminating the spur from NE.	+100
	Along N. slope of the hill (or small mountain)	
40.10	Set a stone 26x6x4 ins., firmly in bedrock, in a mound	+50
	of stone on steep (N) slope, for $\frac{1}{4}$ sec. cor. marked $\frac{1}{4}$ on N. face; raised a mound of stones $1\frac{1}{2}$ ft. high 2 $\frac{1}{2}$ ft. base at S. side of cor. from which a	

X Mark and B.R. cut on top of a needle of rock 2 ft. sq. 5 ft. high brs. S. $75\frac{1}{2}^{\circ}$ E. 62 lks. dist.
 This cor. is about 100 lks. N. of the peak of the hill.
 Descend through stunted manzanitas.
 Ravine course S. SW. 150 lks. above forks. -100
 Spur brg. S., open brush +20
 Ravine course S. -45
 Spur brg. S. SW. +25
 Ravine course SW. dense brush -20
 Ascend oblique slope.
 Spur brg. W. +50
 The cor. to Secs. 19, 20, 29 and 30
 Land mountainous, soil hardpan and stony, 3rd and 4th rates.
 No timber.
 80.20 chs. mountainous and brushy lines.

July 26, 1898.

West on a random line bet. Secs. 19 and 30.

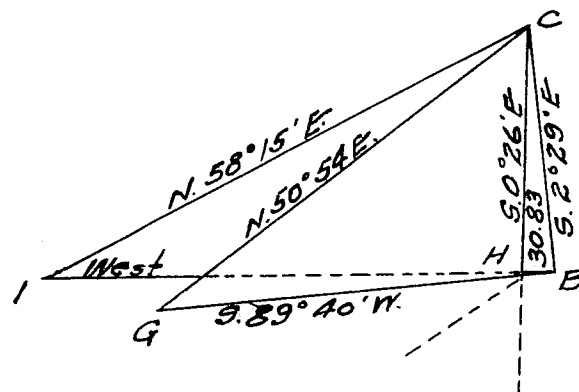
Va. $14^{\circ}55'$ E.

As I have to cross deep canons with precipitous slopes, I measure in part by triangulation used bet. Secs. 29 and 30; to which refer (see pp 93 et seq): (pg. 23 of this)

The cor. to Secs. 19, 20, 29 and 30 at the aforesaid point H. is 115 lks. W. of "D"; and "G" across the canons is 39.58 chs. hence G is $39.58 - 1.15 = 38.43$ chs. from the sec. cor. (H)

Thence set W. 1.57 chs. and offset 23 lks. N. to random line, at Set temp. $\frac{1}{4}$ sec. cor.

I continue the measurement to point of my random course at the top of the mountain, called "I" from which the point G of the former triangulations brs. N. $58^{\circ}15'$ E., hence H to I. = 50.05 chs.



Thence I run by chain 33.35 and at Int. the W.B. of the Tp. at 10 lks. N. of the cor. to secs. 19 and 30, and (24 and 25) already described.

Thence I run

N. $89^{\circ}55'$ E. on the true line bet. Secs. 19 and 30

Va. $14^{\circ}50'$ E.

Over rolling ground on top of mountain top, through thick brush.

4.70 A draw course E. of S. -60
 6.00 Ridge brg. E. of S. +20
 8.00 Flat spur brg. S. SW. +30
 9.50 Rocky ravine course SW. -20
 12.00 Top of mountain ridge (or spur) descending W. NW. +40
 Continue ascent on N. slope of mountain
 20.00 Summit on N. side of mountain. +200
 26.00 Valley course N. NW. -60
 33.00 Ridge or spur of mountain brg. N. NW. +100
 Descend NE. slopes
 35.50 Set a post marked W.P. in mound of earth for witness point of triangulations. Pits impracticable.
 37.00 Steep warped slopes; enter tangle brush and soon in timber. -100
 41.50 Foot of precipitous slopes brg. SE. & W. NW.
 43.40 Set a stone 16x10x8 ins. 12 ins. in the ground on NE. slope.

of mountain, for $\frac{1}{4}$ sec. cor. marked $\frac{1}{4}$ on N. face; raised a mound of stones 2 ft. high 3 ft. base at S. side of cor., from which

The N. stem of a stool white oak 12 in. dia. brs. S. 48° W.

42 lks. dist. marked $\frac{1}{4}$ S.B.T.

- 45.25 Top of ridge or spur brg. E. NE. near triangulation point G.
Descend precipitous slopes.
- 59.00 Foot of slopes brg. N. & S. Enter open bottom of Elbow canon,
general course S. of S.E. -400
- 60.50 Dry arroyo 10 lks. wide some springs 6.00 or 8.00 chs. above;
leave trees.
- 63.50 Across bottom, ascend in heavy brush.
- 69.50 Top of spur brg. S. SW. Descend. +125
- 76.00 Narrow bottom of brushy canon course SW. -80
Ascend oblique slope.
- 83.40 The cor. to Secs. 19, 20, 29 and 30.
Land mountainous, soil, loam, stony and rocky, 2nd, 3rd and 4th rates.
Timber, some oaks; and a few alders on W. slope of Elbow canon.
78.90 chs. mountainous and brushy lines.

July 28, 1898.

North $0^{\circ}26'$ W. bet. Secs. 19 and 20.

Va. $14^{\circ}55'$ E.

As the ascent of the mountain is over precipitous slopes of gulches to be crossed, I measure this line in part by triangulations used bet. Secs. 29 and 30, to which refer (at pp. 23 et seq.)

- 4.00 Ravine course nearly W., then SW. -70
- 6.50 Point of spur brg. W. +90
- 9.00 Ravine course W. SW. -50
- 15.00 W. point of spur brg. S.W. +80
- 21.00 Ravine course S. SW. soon S. -40
- 26.50 Set post marked W.P. in mound of stones for witness to triangulation point ($\triangle C$) on ridge of the spur, brg. S. 26° W. +90
Thence by chain
- 38.00 Ascend stony slope with sparse brush +140
- 40.00 Brow slopes (SW.) of broad top of mountain
Set a stone $24 \times 12 \times 6$ ins. 18 ins. in the ground and mound of stones, for $\frac{1}{4}$ sec. cor. marked $\frac{1}{4}$ on W. face; raised a mound of stones $1\frac{1}{2}$ ft. high $2\frac{1}{2}$ ft. base alongside.

July 28, 1898.

- 50.00 Top of mountain divide bet. Pine and Laguna canons brg. E. & W. +30
Descend over rolling ground.
- 60.00 Enter some oaks, soon into scattering pines.
- 61.25 Bottom of canon, course NE. -250
- 66.25 Ascend the nose or angle of steep bluff +100
Top of bluff, brg. NE.
- 78.00 Descend gentle slope over rolling ground, leave trees, through heavy brush, oak and thorns. -25
- 80.00 Ridge brg. E. & W.
Set a stone $16 \times 14 \times 5$ ins. 10 ins. in the ground on NW. slope for cor. to Secs. 17, 18, 19 and 20, marked with 3 notches on S. and 5 notches on E. edges; dug shallow pits to hardpan in each sec. $5\frac{1}{2}$ ft. dist. and raised a mound of earth 2 ft. high $4\frac{1}{2}$ ft. base, alongside.
Land mountainous, soil, stony, hardpan, loam, 2nd, 3rd and 4th rate.
Timber a few pines and a little oakwood.
80.00 chs. of mountainous and brushy lines.

July 29, 1898.

East on a random line bet. Secs. 17 and 20.

Va. $15^{\circ}05'$ E.

Change of Va. due to local causes.

- 40.00 Set temp. $\frac{1}{4}$ sec. cor.
- 80.60 Fall 7 lks. N. of cor. to Secs. 16, 17, 20 and 21.
Thence I run
N. $89^{\circ}57'$ W. on the true line bet. Secs. 17 and 20.
Over rolling ground, through brush.

Va. $15^{\circ}05'$ E.

1.00	Ridge descending NE.	+20
5.50	Ridge brg. N. Descend	+20
11.50	Ravine course W. Ascend	-50
16.00	Spur brg. N.	+75
19.00	Ravine course NE	-30
23.75	Spur brg. NE.	+40
25.50	Ravine course NE.	-30
31.25	Spur brg. NE.	+50
32.50	Gully brg. NE.	
34.50	Summit brg. N.	+80
39.50	Narrow ridge brg. W. of N.	
40.30	Set a quartzose stone 22x8x6 ins. 16 ins. in the ground, on a NW. slope for $\frac{1}{4}$ sec. cor. marked $\frac{1}{4}$ on N. face; raised a mound of stone 1 $\frac{1}{2}$ ft. base on E. side.	
40.80	Valley descending N. NW.	-60
41.50	Ridge descending N. NW.	+10
45.80	Canon course nearly N. with scattering trees	-125
60.50	Spur brg. N. NE.	-130
64.00	Descend into branch ravine brg. N.	
65.50	Bottom of same, enter scattering trees.	-75
66.00	Point of hill bet. ravines.	+60
66.50	Canon brg. NE. 2.75 chs. above cascades.	-75
67.50	Top of bluff W. side brg. NW.	+100
74.50	Top of mountain brg. N. & S. Descend.	+125
77.25	Ravine course N. soon reaches junction.	-90
	Ascend rolling slope in oak and thorn brush.	
79.50	Ridge or point of hill brg. N. NE.	+40
80.60	The cor. to Secs. 17, 18, 19 and 20.	-10
	Land mountainous, soil, loam, stony, hardpan, 2nd, 3rd and 4th rate. Timber, a few fir, pines in canons.	

July 29, 1898.

West on a random line bet. Secs. 18 and 19.

Va. 15°05' E.

40.00	Set temp. $\frac{1}{4}$ sec. cor.	
82.50	Int. the W.B. of the Tp. 14 lks. N. of cor. to Secs. 18 and 19, (13 and 24) already described.	
	Thence I run	
	N. 89°54' E. on the true line bet. Secs. 18 and 19.	

Va. 15° E.

Over gullied top of mountains, through open brush and patches of dwarfed manzanita.

1.50	Ravine course SE. then bending E.	-10
4.75	Ridge brg. N. & S. 12 ft. high	+12
13.00	Ridge brg. N. & S. 15 ft. high	
19.50	Ravine course NW.	-15
20.00	Ridge brg. NE.	+25
23.50	Ravine course N.	-20
26.50	Ridge brg. N.	+40
28.25	Ravine course N.	-25
30.50	Ridge brg. N.	+30
33.50	Ravine course N.	-20
35.00	Ridge brg. N. NE.	+15
	Along S. side of low hill.	
42.50	Set a stone 14x12x4 ins. 10 ins. in the ground on S. point of flat hill, for $\frac{1}{4}$ sec. marked $\frac{1}{4}$ on N. face; raised a mound of stones 1 $\frac{1}{2}$ ft. high 2 $\frac{1}{2}$ ft. base alongside.	
	The mountain divide bet. Pine and Laguna canons brg. E. & W. lies about 9.00 chs. S. and across an irregular basin 12 to 15 ft. deep.	
43.25	Ravine course N. NE. draining the basin.	-25
45.75	Spur brg. N. NE. Dense brush.	+20
48.50	Ravine course N. NE.	-25
49.50	Spur brg. N. NW.	+20
51.75	Ravine course N.	-20
52.75	Spur brg. N.	+25
55.75	Ravine course N.	-30

58.75	Spur brg. N.	+25
65.75	Ravine course N.	-25
69.50	Spur brg. N. NE.	+20
72.00	Arroyo course N. NE.	-10
74.00	Ridge brg. N.E.	+10
77.25	Bottom of canon course NE. soon nearly E.	-75
	Ascend	
78.75	Ridge slopes N. on side hill.	
79.50	Arroyo slopes N. on side hill.	
82.50	The cor. to Secs. 17, 18, 19 and 20	+25
	Land mountainous. Soil loam and hardpan, 2nd and 3rd rates.	
	No timber.	
	82.50 chs. mountainous and brushy lines.	

July 29, 1898.

North 0°26' W. bet. Secs. 17 and 18.

Va. 15°05' E.

	Descend steep slopes through brush.	
5.50	Bottom of canon course E. NE.	-175
	Scattering trees along the line	
13.25	Spur brg. NE. brush increases.	+100
16.25	Ravine course NE.	-75
18.25	Spur brg. NE.	+60
22.50	Ravine course NE.	-40
24.50	Spur brg. NE.	+25
	Down rolling side of mountain with swells and arroyos	
	Descending N. NE.	
32.00	Into dense oak brush and a skirting of small oakwoods.	
35.00	Arroyo course N. NE.	
39.00	Leave oaks and close brush, enter point of opening with scattering pines.	
40.00	Set a stone 20x8x6 ins. 15 ins. in the ground on the N. slope, near the foot of the Mt. for $\frac{1}{4}$ sec. cor. marked $\frac{1}{4}$ on W. face; raised a mound of stones $1\frac{1}{2}$ ft. high $2\frac{1}{2}$ ft. base alongside.	
	From which cor. a	
	Pine 12 in. dia. brs. S. $30\frac{1}{2}^{\circ}$ W. 71 lks. dist. marked $\frac{1}{4}$ S.B.T.	
	Pine 30 ins. dia. brs. S. 54° E. 150 lks. dist. marked $\frac{1}{4}$ S.B.T.	
	The cabin of Jas. Kirby (about 1.00 chs. N. of "Cottonwood Springs" brs. N. 65° W. 6.20 dist.	
40.50	Foot of mountain on narrow bench, running along same, brg.	
	N. 80° W. & S. 80° E.	-275
41.25	Old "earthquake crevice" having same bearings, discernible at many points up and down the canons, said to extend from below Elizabeth Lake to Gorman's Station;	
42.00	To bottom of the Canada of "Pine Canon" brg. W. NW. & E. SE. with scattering cottonwoods.	-20
42.75	Road, "Old Fort Tejon trail" brg. E. & W.	
44.50	Dry water course about 5.00 chs. below water sink; stony bed 15 lks. wide, course E. running along the N. bluff of the canon; a little above this point it comes from W. NW. Leave trees.	-15
	Ascend precipitous hillside.	
48.00	Top of broken bench brg. E. & W.	+100
50.00	Ascend steep rolling side of mountain through brush.	
58.00	Ravine 20 ft. deep in the side of mountain.	
	Descend SW.	
74.00	Top of Mesa Mt., leave brush and enter rolling prairie brg. E. & W.	+450
78.50	Summit divide to Antelope Valley brg. S. of E. & W. NW.	+50
80.00	Set a stone 27x6x5 ins. 24 ins. in the ground for cor. to Secs. 7, 8, 17 & 18, marked with 4 notches on the S. & 5 notches on the E. edges; raised a mound of stones $1\frac{1}{2}$ ft. high $2\frac{1}{2}$ ft. base alongside.	
	Land mountainous and rolling.	
	Soil, alluvial, loam, wash and stony, 1st, 2nd & 3rd and 4th rates.	
	Timber, some small oaks, a few pines and cottonwoods.	
	71.50 chs. mountainous and brushy lines.	

East on a random line bet. Secs. 8 and 17.

Va. 15°05' E.

40.00	Set temp. $\frac{1}{4}$ sec. cor.	
50.50	Fall 37 lks. N. of cor. to Secs. 8, 9, 16 and 17.	
	Thence I run	
	N. 89°44' W. on the true line bet. Secs. 8 and 17.	
		Va. 15°05' E.
	Along the foot of a N. slope, through dense brush and small oaks.	
10.75	Arroyo bottom of canon course E.NE. soon runs E. Ascend.	+50
28.00	Top of bluff, into open brush.	+150
28.50	Road along top of the spur brg. N.E.	
37.50	Ravine or valley course NE.	-60
40.25	Set a stone 16x8x6 ins. 11 ins. in the ground on S. slope of low spur brg. NE. 125 lks. S. of its ridge for $\frac{1}{4}$ sec. cor. marked $\frac{1}{4}$ on N. face; raised a mound of earth and stones $1\frac{1}{2}$ ft. high $3\frac{1}{2}$ ft. base alongside. Ascend.	+50
41.00	Sharp ridge brg. NE.	+20
44.25	Ravine course NE. near its head,	-20
47.00	Top of bluff brg. NE. & SW. enter rolling top of Mesa Mt. and scattering pines.	+75
60.25	Edmund Beckman's cabin brs. N. 80 lks. dist.	
65.00	In sage or valleys leading to ravines, courses N., leave trees enter free prairie.	
77.50	Ridge, brg. N. NE. (to hill) and S. SE.	+35
80.50	The cor. to Secs. 7, 8, 17 & 18.	-20
	Land mountainous and rolling plain.	
	Soil alluvial, loam, sandy, 1st, 2nd, 3rd rates.	
	Timber, small oaks and a few pines.	
47.00	chs. mountainous and brushy lines.	

July 30, 1898.

West on a random line bet. Secs. 7 and 18.

Va. 15°05' E.

40.00	Set temp. $\frac{1}{4}$ sec. cor.	
51.65	Int. W.B. of the Tp. at 24 lks. S. of cor. to Secs. 7 and 18 (12 and 13) already described;	
	Thence I run	
	S. 89°50' E. on the true line bet. Secs. 7 and 18.	
		Va. 14°50' E.
	Change of Va. due to local causes.	
	Over rocky slopes of the broken S. slope of the mountain, through open brush.	
1.00	Rocky ridge descending to SW. Descend.	
4.50	Ravine course S. SE.	-50
7.50	Spur brg. S.	+30
8.75	Ravine course S. SE.	-60
12.50	Spur brg. S. SW.	+30
20.25	Ravine course SW.	-175
24.40	Ridge descending SW.	+160
28.00	Top of spur brg. S. SE. (on slope)	+80
31.75	Ravine course SE. Ascend.	-90
40.70	Leave brush brg. N. & S. & enter rolling prairie.	
41.65	Set a stone 15x8x6 ins. 10 ins. in the ground on a ridge, brs. N. & S. 1.00 ch. N. of beginning of steep slope S. and 2.00 chs. N. of brush beg. E. & W. on S. side of Mesa Mt. for $\frac{1}{4}$ sec. cor. marked $\frac{1}{4}$ on N. face; dug pits 18x18x12 in. E. & W. of stones $5\frac{1}{2}$ ft. dist.; raised a mound of earth 2 ft. high $4\frac{1}{2}$ ft. base alongside.	-80
72.00	Enter a point of brush from S. head of a Valley. Reentering angle	

of S. margin of the mountain top. Ascending.
 73.25 Leave point of brush, brg. SE.
 Enter plowed field in corn.
 78.00 Top of mountain divide, brg. W. NW. & soon trends E. & NE. +80
 81.65 The cor. to Secs. 7, 8, 17 and 18 -30
 Land mountainous and rolling.
 Soil alluvial and stony, 1st, 3rd & 4th rates.
 No timber.
 41.95 chs. mountainous and brushy lines.

August 2, 1898.

North 0°26' W. on a random line bet. Secs. 7 and 8
 Va. 15°05' E.
 40.00 Set temp. $\frac{1}{4}$ sec. cor.
 75.30 Int. sec. line 26 lks. W. of cor. to Secs. 5, 6, 7, 8
 Thence I run
 South 0°15' E. on the true line bet. Secs. 7 and 8
 Va. 14°50' E.
 Change of Va. due to local causes.
 2.00 Into arroyo bottom of ravine about 150 lks. below springs to S. SE.
 course soon is S., leave scattering trees fringing brow of mount-
 ain, enter prairie. Ascend.
 9.00 Brow of rolling mesa, brg. NW. & E. SE.
 Enter plowed fields. +100
 16.00 Top of mountain brg. E. & W. +20
 20.50 Leave prairie and plowing brg. N.NW. & E. SE. Enter heavy greasewood
 brush on steep slopes to the S. -10
 34.50 Ridge brg. W.
 35.30 Set a stone 12x10x6 ins. 9 ins. in the ground on S. slope for $\frac{1}{4}$
 sec. cor. marked $\frac{1}{4}$ on W. face; raised a mound of stones 1 $\frac{1}{2}$ ft. high
 2 $\frac{1}{2}$ ft. base alongside.
 37.00 Bligh's canon course E. about 8.00 chs. above three forks -200
 Ascend.
 43.00 Spur brg. NE. +175
 Over rolling ground in dense brush.
 70.00 Leave brush, brg. E. & W. Enter prairie in a basin, soon opening into
 a ravine, with course N. NE. +50
 75.00 The cor. to Secs. 7, 8, 17 and 18.
 30 Land rolling and mountainous.
 Soil alluvial, hardpan and stony, 1st, 3rd and 4th rates.
 No timber.
 49.50 chs. mountainous and brushy lines.

August 2, 1898.

Meanders of Hugh's Lake in Secs. 22 and 23.

I begin at the meander cor. to frac. Secs. 22 and 23 on N. bank of
 lake, already described.
 Thence I run with meanders in Sec. 22

Va. 14°55' E.

N. 73°	40' W.	3.10 chs.	
S. 51°	05' W.	5.00 chs.	At E. end of wire fence running W.
S. 21°	35' W.	4.70 chs.	At the outlet of the lake, course N. of W.
			Enter timber and tules.
S. 44°	15' E.	1.70 chs.	
S. 79°	00' E.	1.70 chs.	
S. 46°	00' E.	1.60 chs.	
S. 71°	55' E.	1.90 chs.	
S. 52°	55' E.	2.00 chs.	
S. 53°	55' E.	1.77 chs.	To the meander cor. on the S. side of the lake already described.

Thence in Section 23.

S. 79°	05'E.	3.70	chs.	
N. 76°	55'E.	4.10	chs.	
S. 57°	15' E.	1.60	chs.	
S. 77°	00'E.	1.00	chs.	
S. 74°	55'E.	4.90	chs.	
S. 39°	05'E.	1.90	chs.	
S. 86°	50'E.	3.90	chs.	
S. 77°	50'E.	1.90	chs.	
N. 89°	40'E.	.50	chs.	A point in the bdy. bet. Secs. 23 and 26, in the mouth of a short canon from the S.
N. 77°	00'E.	1.00	chs.	Leave timbered shore and bluff banks and foot hills.
N. 53°	00'E.	6.00	chs.	At 5.50 chs. cross dry channel of storm water inlet.
N. 55°	E.	2.00	chs.	
N. 74°	30'W.	7.20	chs.	At 1.00 chs. cross the neck of a small tule swamp outside of meanders of lake.
N. 64°	20'W.	4.60	chs.	
N. 44°	05'W.	2.10	chs.	
N. 22°	30'W.	3.20	chs.	
N. 47°	15'W.	3.40	chs.	
N. 89°	25' W.	1.70	chs.	
N. 79°	54'W.	4.50	chs.	
S. 41°	20'W.	1.90	chs.	
N. 78°	40'W.	3.40	chs.	
N. 72°	20'W.	3.02	chs.	To the place of beginning.

Meanders of Hugh's lake.

Land on the N.E. & W. sides of the lake, level and rolling; on the S. side of the lake, bluff and hillsides.

Soil alluvial, sandy and gravelly, 1st, 2nd and 3rd rates.

Timber, willow, oaks and scattering pines.

May 6, 1898.

Caleb A. Ensign.

Vol. 394-2
G.B.J.