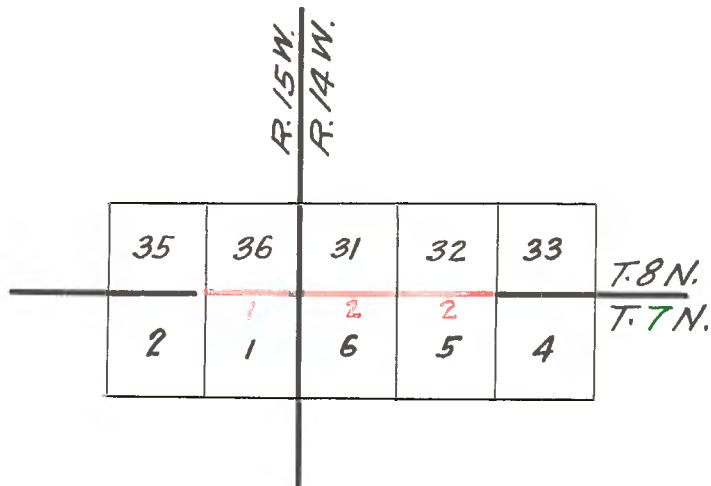


COPY OF
FIELD NOTES
OF
SANTA BARBARA NATIONAL FOREST

N.Line Sec.5 & 6, T.7 N. R.14 W.
and
N.Line Sec.1, T.7 N. R.14 W.
(Surveyed by Thorn 1904)



(Copied from W. H. Thorn's Survey of Nov. 28, 1904,
January 11, 1906, furnished by Geological Survey.)

Starting at Cor. of Secs. 1, 2, 35 and 36, T. 7 and 8 N.,
R. 15 W., S.B.M.

"Land level and gently rolling.
Soil sandy, third rate.
No timber or brush.

40.06 N. 89° 34' E. on a random line bet. Secs. 1 and 36
Find no trace of 1/4 sec. cor. Set temp. cor. Con-
tinue line E.

80.16 Intersect cor. of Tps. 7 and 8 N., Rs. 14 and 15 W.,
which is a granite stone 6x6x6 in. above ground firmly
set, witnessed and marked
I return to the cor. of Secs. 1, 2, 35 and 36
Thence I run N. 89° 34' E. on a true line bet. Secs.
1 and 36 over gradual S.E. slope in prairie.

.06 Set iron U.S. for. res. bdy. post No. 72 set 30 in.
in the ground. Raised mound of earth 4 ft. base, 1 ft.
high around post marked
No. 72 on S. side of cap
1905 on S. side of cap
Reserve in S.E. and S.W. quadrants also marked
T. 8 N., S. 36 W. C. in N.E. quadrants
R. 15 W., S. 1 in S.E. quadrant
T. 7 N., S. 2 in S.W. quadrant
S. 35 in N.W. quadrant with 1 notch on E. and 5
notches on W. edges of cap

10.00 Dim road brs. N.E. and S.W.

14.88 Cram's store at Fairmount brs. N. 14° 30' E.

21.00 Small drain, course N.E.

25.00 Wire fence brs. N. & S. Enter level land

40.08 Set a granite stone 15x11x7 in. 10 in. in the ground
for 1/4 sec. cor. marked 1/4 on N. face, dig pits
18x18x12 in. E. and W. of cor. 3-1/2 ft. dist. Raised
mound of earth and stone 3-1/2 ft. base, 1-1/2 ft.
high N. of cor.

45.50 Dim road brs. N.W. and S.E.

45.58 Cram's stone brs. N. 46° 10' W.

60.54 Fairmount and Lancaster wagon road brs. S. 66° E. and
N. 58° W.

62.24 Set iron U.S. For. Res. Bdy. Post No. 73, 30 in. in
the ground, raised mound of earth 4 ft. base, 1 ft. high,
around post, marked
No. 73 on S. side of cap
1905 on S. side of cap
Reserve in S.E. and S.W. quadrants

80.16 Cor. of Tps. 7 and 8 N., Rs. 14 and 15 W.
At this cor. I set off 10° 55' S. on decl. arc and
at 12 h. 13' p.m., l.m.t., observe the sun on the
meridian. The resulting lat. is 34° 44' N., which
is about 30" greater than the correct lat.
Land level and gently rolling. Soil sandy, third
rate.
No timber or brush.
From this Tp. cor. a windmill brs. N. 67° 30' E.

N. Bdy. Tp. 7 N., R. 14 W.
 NOTE: Failed to find Norway's cor. of Tps. 7 and 8 N., Rs. 14 and 15 W., described in field notes of N. Bdy. of Tp. 7 N., R. 15 W., surveyed in 1891. Thence I run E. on a random line bet. Secs. 6 and 31

40.00 Find no trace of 1/4 sec. cor. Continue line E.
 80.00 Find no trace of cor. of Secs. 5, 6, 31 and 32. Set temp. cor.
 44.16 Continue random line E. bet. Secs. 5 and 32. 1/4 sec. cor. brs. N. 243 lks. which is a granite stone 4x6x6 in. above ground, firmly set, and marked 1/4 on N. face.
 84.24 Continue random line E. Cor. of Secs. 4, 5, 32 and 33 brs. N. 260 lks. which is a granite stone 3x6x8 in. above ground, firmly set and marked with two notches on W. and 4 notches on E. faces
 I return to the cor. of Tps. 7 and 8 N., Rs. 14 and 15 W.
 Thence I run N. 88° 51' E. on a true line bet. Secs. 6 and 31, over level land.
 .06 Set iron U.S. For. Res. Bdy. Post No. 74, 30 in. in the ground, raised mound of earth 4 ft. base, 1 ft. high around post marked, No. 74 on S. side of cap 1905 on S. side of cap Reserve in S.E. and S.W. quadrants Also marked

T. 8 N., S. 31 W.O. in N.E. quadrant
 R.14 W. S. 6 in. S.E. quadrant
 T. 7 N., S. 1 in. S.W. quadrant
 R.15 W., S. 36 in N.W. quadrant with 6 notches on N., S.E. and W. edges of rim

44.16 Set a granite stone 16x11x8 in. 10 in. in the ground for 1/4 sec. cor. marked 1/4 on N. face, dig pits 18x18x12 in E. and W. of cor. 3-1/2 ft. dist. Raised mound of earth N. of cor.
 NOTE: This correction for 1/4 cor. agrees with old fence line. For this reason throw all the excess on west half of mile.
 Windmill brs. N. 30° 30' W. from 1/4 Sec. Cor.
 57.50 Old road brs. N. 60° W. and S. 60° E.
 67.00 Top of same hill brs. N. & S. Descend gradual E. slope.
 73.50 Same road brs. N.E. and S.W.
 84.16 Set a granite stone 16x10x9 in. 10 in. in the ground for cor. of Secs. 5, 6, 31 and 32 marked with 1 notch on west and five notches on E. faces; dig pits 18x18x12 in. in each section, 5-1/2 ft. dist. Raised mound of earth 5 ft. base, 2-1/2 ft. high N. of cor.
 Land level and rolling.
 Soil sandy, third rate
 No timber or brush

This is a resurvey made by W.H. Thorn, Nov. 28, 1904 under authority from the Land Office and authorized by the Surveyor General.