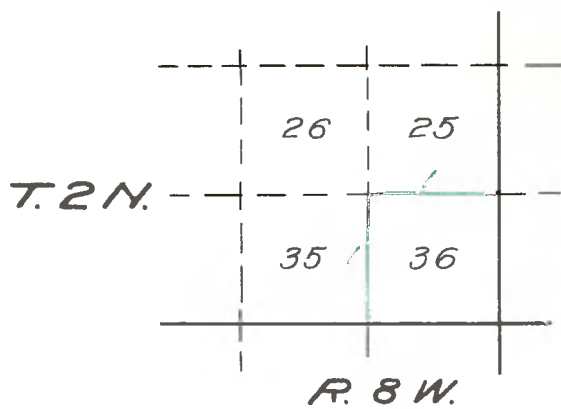


RETURN TO
COUNTY SURVEYOR,
LOS ANGELES.

Field Notes of the NORTH and WEST lines
of
Section 36, T 2 N, R 8 W, S.B.M.



T 2 N., R 8 W., S.B.M.

From the established corner to Secs 1, 2, 35 and 36, on the S bdy of the Tp., I run

NORTH between Secs 35 and 36. Var 14° 26 $\frac{1}{2}$ ' E.
Descending.

- 22 00 Ravine 20 lks wide, course SE and ascend.
 - 40 00 Set granite stone 19x11x9 ins 14 ins in the ground for $\frac{1}{4}$ sec cor mkd $\frac{1}{4}$ on W face and raised md of stone alongside. Pits impracticable.
 - 44 00 Top of ridge bears N 5° W and SE. Thence
Along east slope of ridge.
 - 75 00 Summit of ridge bears NE and SW, and descend.
 - 80 00 Set sandstone 14x9x8 ins 9 ins in the ground for cor to Secs 25, 26, 35 and 36 mkd with 1 notch on E and S edges, and raised a md of stone alongside. Pits impracticable. Land mountainous. Soil 2nd rate
Timber of pine and oak in ravines. Dense undergrowth of chaparral.
- - - - -

EAST on a RANDOM LINE between Secs 25 and 36. Var 14° 26 $\frac{1}{2}$ ' E.

- 40 00 Set temporary $\frac{1}{4}$ section corner.
- 80 27 Intersect E bdy at 69 lks N of corner to Secs 25, 30, 31 and 36, which is a white granite stone 36x12x12 ins 27 ins in the ground mkd with 1 notch on S and 5 notches on N edges, with md of stone alongside. Thence I run

N. 89° 31' W, on a TRUE LINE between Secs 25 and 36, same Var.

Descend.

- 10 00 Enter San Antonio Canyon, course S.
 - 19 50 San Antonio Creek 25 lks wide, course S.
 - 27 60 Leave canyon, course S and ascend.
 - 37 20 Trail bears NE and SW.
 - 40 14 Set sandstone 14x9x7 ins 9 ins in the ground for $\frac{1}{4}$ sec cor mkd $\frac{1}{4}$ on N face and raised a md of stone alongside. Pits impracticable.
 - 79 00 Top of ridge bears NE and SW, and descend.
 - 80 27 The corner to Sections 25, 26, 35 and 36.
Land mountainous. Soil 1st and 2nd rate.
Timber Sycamore and pine and oak in canyon.
Dense undergrowth of chaparral; brush on each side of canyon.
- - - - -

Surveyed by G. W. Pearson, Deputy Surveyor,

Contract dated December 10, 1883.