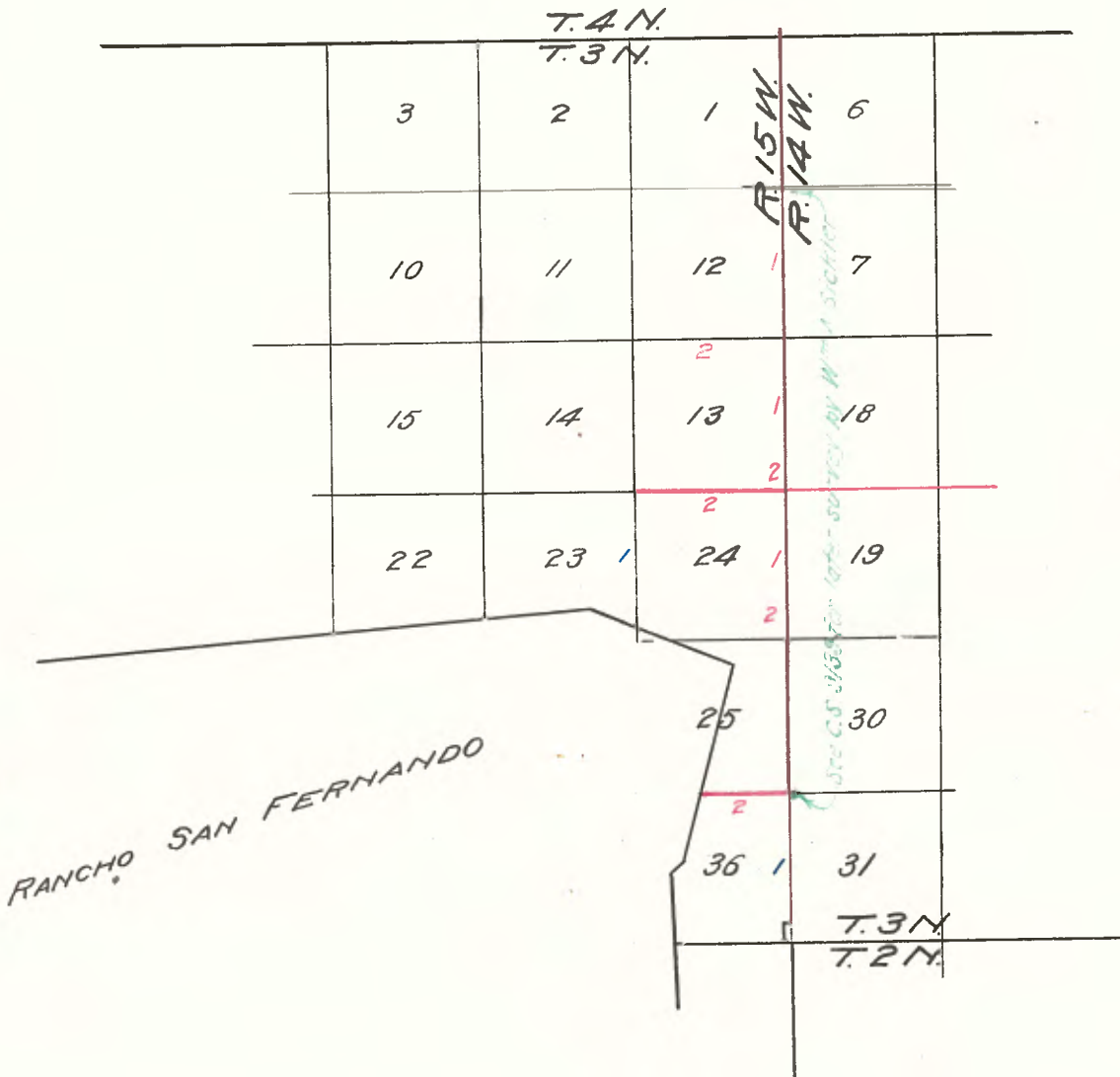


Field Notes of

East boundary of Sections 12, 13 and 24,
and south lines of Sections 13 and 25,
Township 3 North, Range 15 West, S.B.M.

Copied from certified copies of official
field notes received from surveyor General
in March and May, 1921.



Blue = M. G. Wheeler survey. Contract - Sept. 4, 1874
Carmine = H. J. Stevenson survey. Contract - Apr. 25, 1881.

T 3 N, R 15 W, S.B.M.

From fractional Southeast corner of township

Var. 14°E

x x x

North true line East side of Sec 36.

x x x

- 70 00 To corner of Secs 25 and 36.
Deposited charred stake. Set granite 18 x 12 x 6, 14 in deep and raised stone mound on North slope of a low ridge.

x x x x x x x

North between secs 24 and 23.

Var. 14°E

x x x

- 80 00 Set granite 18 x 12 x 8, 12 in deep on West face of a hill.
Deposited chrd stake and raised stone mound for corner to Secs 13, 14, 23 and 24.

M. G. Wheeler, Deputy Surveyor
Contract - Sept. 4, 1874.

T 3 N, R 15 W, S.B.M.

Begin at the established corner to Secs 24-25- in the E Bdy of the Tp. which agrees with the description furnished by the Surveyor General.
North on a random line.

Var. 14°30'E

I set temp. half mile and mile posts at 40.00 and 80.00 chains.
At 240.60 chains to a point 13 lks East of the corner to Secs 1-12-6 and 7.

The correction for the true line will therefore be 20 lks N and 4 1/3 lks W per mile.

From the corner to Secs 1-12-6-7 I run S 0°02'E on a true line on E Bdy of Sec 12.

Var 14°30'E

- 3.10 To canon 100 ft deep course NW.
40.10 Set a fir post 4 in dia. & 3 ft long in mound of rock 2 ft high for 1/4 sec. cor.
63.10 Begin to descend S slope of Mt.
80.20 Set granite rock 20 x 12 x 9 one ft deep on S slope of mountain for the cor to Secs 12-13-7-18.
Land principally sloping to NW very rough and broken.
Timber and fir. Undergrowth scrub oak.

July 28, 1881.

S 0°02'E on true line on E Bdy Sec 13.

Var 14°30'E

- 40.10 Set oak post 3 in dia. 3 ft long in mound of rock 2 ft high, for 1/4 sec corner.
47.00 To deep ravine course East.
74.00 Descend.

50.20 Set oak post 4 in. dia., 3 ft. long properly marked in mound of rock, 2 ft. high, for the corner to Secs. 13-24-18-19. Land principally sloping to the NW., very rough & broken. Timber fir, pine & scrub oak.

 S. 0° 02' E. on a true line on E. Bdy. Sec. 24. Var. 14° 30' E.

Descend from corner.
 12.50 To canon of the Paccima Creek.
 12.80 To Paccima Creek 10 lks. wide & 4 in. deep, Course comes from the NE. & runs W.
 12.93 Marked a sycamore tree 1 ft. dia. "R. 14 W., T. 3 N., S. 19" on the E. side & on the W. side I marked said tree "R. 15 W., T. 3 N., S. 24".
 13.00 Begin to ascend steep rocky mountain.
 22.00 To top of steep ascent.
 40.11 Set a sycamore post 4 in. dia. & 3 ft. long in mound of rock 2 ft. high for 1/2 sec. corner.
 57.00 Begin the descent.
 80.20 To corner.
 Land very broken & rocky. Timber, sycamore & oak.
 July 29, 1881.

 West on a true line between Secs. 25-36. Var. 14° 30' E.

5.30 Ravine 20 ft. deep course SW.
 14.20 " 10 " " " SW.
 40.00 Set a sycamore post 3 ft. long in mound of rocks for 1/2 sec. cor.
 49.14 Intersected E. Bdy. of the San Fernando Apache where I set sycamore post 3 ft. long, 3 in. dia. in md. of rocks 2 ft. high for cor. to fractional secs. 25-36.
 Land sloping to the SW.
 Very gravelly and poor. Timber sycamore and small brush in places.

 West on random line bet. secs. 13-24. Var. 14° 30' E.

40.00 Set temp. 1/2 sec. cor.
 60.22 To a point 56 lks. S. of the cor. to secs. 13-14 - 23-24. S. 89° 36' E. on true line bet. secs. 13 and 24.
 5.00 To a ravine 70 ft. deep. Course SW.
 40.11 Set Oak post 3 in. dia. & 3 ft. long in md. of rock 2 ft. high for 1/2 sec. corner.
 80.22 To corner.
 Land very broken and rocky. Timber, fir and oak with dense undergrowth in places.

 West on a random line bet. secs. 12-13. Var. 14° 30' E.

5.00 To a point where it is impossible to proceed farther on this line. I therefore offset N. 10.00 chs., W. 35.00 chs., S. 10.00 chs. to a point 26 lks. E. of a pine tree marked for 1/2 sec. cor. This line is therefore E. and the distance is 40.26 to corner. Land very broken and utterly worthless. Timber, fir, pine and small oaks.
 July 30, 1881

 surveyed by H. J. Stevenson, U. S. Deputy Surveyor
 Contract dated April 25, 1881.