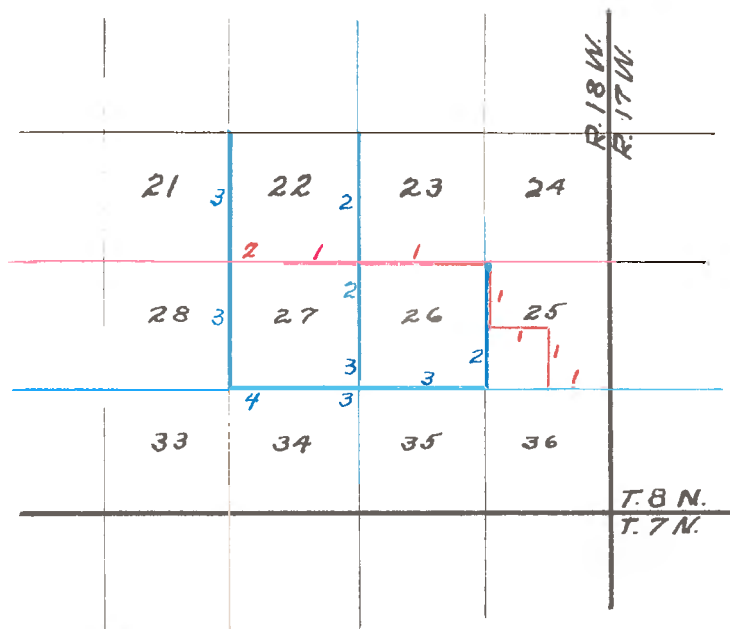


Field Notes
of
Subdivision Lines of
Sections 26 and 27
Township 8 North, Range 18 West, S. B. M.

 Certified copy of notes received from Louis
 H. Mooser, U. S. Surveyor General for Cali-
 fornia. September 1, 1921.



Red-Survey by John Goldsworthy Jan. 13, 1873

Blue-Survey by W.H. Norway Oct. 25, 1873

Additional notes on Section 25 - C.S. 9165

Subdivision lines of Township 8 North, Range 18 West, S.B.M.,
by John Goldsworthy, Deputy Surveyor.
Under his contract of January 13, 1873.

West on true line between sections 25 and 36.

Var. 14° 30' E.

40 00

To $\frac{1}{4}$ sec. cor. between secs. 25 and 36. Set post and charred
stake in mound with pits as per instructions from which a white oak
8 in. in dia. bears N. distant $4 \frac{33}{100}$. I can proceed no farther
either W. or S. on account of the steep and broken nature of the
ground.

N. thru sec. 25.

W. on a true line thru Sec. 25.

Var. 14° 30' E.

40 00

To $\frac{1}{4}$ sec. cor. between secs. 25 and 26. Set post and charred stake
in mound with pits as per instructions. Land rolling, 2nd rate.
I could not proceed S. from this point on account of the steep and
broken nature of the mountain range.

N. on random line between Secs. 25 and 26.

Var. 14° 30' E.

11 50

To ravine 1 ch. wide, course NE.

25 10

To ravine 2 chs. wide, course NE.

40 07

To point 14 lks. W. of old mound cor. to secs. 23, 24, 25 and 26.
Post had decayed, hence I reestablished the same by setting a post
and charred stake in old mound with pits as per instructions.
S. on true line between secs. 25 and 26.

Bearing S. 0° 12' W.

40 07

To $\frac{1}{4}$ sec. cor. between secs. 25 and 26.
Land very rolling. Soil 2nd rate.

W. on true line between secs. 23 and 26.

Var. 14° 30' E.

10 00

To summit of spur, course E.

20 00

To ravine, course NE.

35 00

To top of ridge, course NW.

40 00

To $\frac{1}{4}$ sec. cor. between secs. 23 and 26.

Set post and charred stake in mound with pits as per instructions.

60 00

To small ravine course NE.

73 00

To summit of ridge, course NE., SW.

80 00

To corner to sections 22, 23, 26 and 27.

Set charred stake in mound with pits as per instructions. Land
very rolling. Soil 2nd rate. Growth, clover and alfileria.

W. on random between secs. 22 and 27.

Var. 14° 30' E.

16 00

To ravine, course NW.

30 00

To summit of spur, course NW.

40 00

Set temporary $\frac{1}{4}$ sec. cor.

65 00

To ravine course NW.

75 00

To base of high hill. Course N. and S. Enter small flat.

T. 8 N., R. 18 W., S. B.M.

75.00 To base of round knoll.
80 16 To point 21 lks. N. of old mound. Cor. to secs. 21, 22, 27 and 28;
the old post being decayed, I set a post and charred stakes in old
mound with pits as per instructions.

East on true line
Bearing N. 89° 51' E.

40 08 To 1/4 sec. cor. Set post and charred stake in mound with trench and
80 16 pits as per instructions.

The corner to secs. 21, 22, 27 and 28.
Land very rolling. Soil 2nd rate. Growth of clover and wild oats.
I am unable to run farther S. from corner to secs. 21, 22, 27 and 28
on account of the rough and broken nature of the mountain range.

Part 35
Vol. 164

A portion of the Subdivision lines of fractional township 8 North,
Range 18 West, S. B. M.
by W. H. Norway, Deputy Surveyor,
Under his contract of October 25th, 1879.

(Retracing 1st 1/2 mile)

As a portion of this township has been previously surveyed, I find
it necessary to run a part of the lines South.
From the corner to secs. 23, 24, 25 and 26, which I find standing
and agreeing with field notes, I run South on a true line between
Secs. 25 and 26. Var. 14° 30' E.

Ascend.

40 00 Being unable after diligent search to find old 1/4 sec. cor. I set
post 4 in. sq. 1 ft. in earth 1 ft. above earth mound 4 ft. in dia.
at base by 2 ft. in height and dug pit 24 x 18 x 12 8 lks. E. for
1/4 sec. cor. on top of mountain sloping W.

62 00 Leave same descending gradually.

80 00 Set post 4 in. sq. 1 ft. in earth 1 ft. above stone mound 4 1/2 ft. in
dia. at base by 2 ft. in height for corner to secs. 25, 26, 35 & 36.
Timber and undergrowth of oak and chaparral. Land mountainous.
Soil 1st and 2nd rate.

RETRACING

Being unable to find any trace of old corner to secs. 22, 23, 26 &
27, in order to reestablish same, I began at corner to secs. 14,
15, 22 and 23, which I find standing and agreeing with the field
notes, and run S. on a true line between secs. 22 and 23.
Var. 14° 30' E.

80 00 Set post 4 in. sq. 1 ft. in earth 1 ft. above earth mound 4 1/2 ft. in
dia. at base by 2 ft. in height and dug pits 24 x 18 x 12 8 lks.
dist. at 4 angles for cor. to secs. 22, 23, 26 and 27.
Land mountainous.
Soil 1st and 2nd rate. Timber undergrowth of oak bunch grass and
chaparral.

S. between secs. 26 & 27.

Var. 14° 30' E.

Ascend.

19 75 Summit of ridge bears E. & W. and descend.
30 00 A spring bears E. about 9.00 chs. distant.
40 00 Set post 4 in. dia. 1 ft. in earth 1 ft. above earth mound 4 ft. in
dia. at base by 2 ft. in height and dug pit 24 x 18 x 12 8 lks. E.
for 1/4 sec. corner.
56 00 Enter Canada, bears NW. and SE.

63 00 Leave same, bears same and ascend.
 80 00 Set post 4 in. sq. 1 ft. in earth 1 ft. above earth mound $4\frac{1}{2}$ ft. in dia. at base by 2 ft. in height and dug pits 24 x 18 x 12 8 lks. dist. at 4 angles for cor. to secs. 26, 27, 34 and 35. Land mountainous.
 Soil 2nd rate, & 1st rate. * * * * *
 Timber & undergrowth of oak, chaparral & bunch grass.

 East on random line between secs. 26 & 35. Var. 14° 30' E.

Ascend.
 13 00 Top of ridge bears NE. and SW. and descend.
 40 00 Set temporary $\frac{1}{4}$ sec. cor.
 44 00 Cross ravine 10 lks. wide, course SE.
 52 50 Cross ravine 10 lks. wide, course S. and ascend.
 79 74 Intersect N. and S. line 14 lks. S. of corner to secs. 25, 26, 35 & 36, from which corner I run S. 89° 54' W. on a true line between secs. 26 & 35. Va. 14° 30' E.

~~Ascend.
 13 00 Top of ridge bears NE. and SW. and descend.
 40 00 Set temporary $\frac{1}{4}$ sec. cor.
 44 00 Cross ravine 10 lks. wide course SE.
 52 50 Cross ravine 10 lks. wide, course S. and ascend.
 79 74~~

39 87 Set post 4 in. dia. 1 ft. in earth 1 ft. above stone mound 4 ft. in dia. at base by 2 ft. in height for $\frac{1}{4}$ sec. cor.
 79 74 The corner to secs. 26, 27, 34 & 35. Land mountainous. Soil 1st & 2nd rate. Timber & undergrowth of oak, chaparral & bunch grass.

RETRACING

Being unable to find after diligent search any traces of cor. to secs. 21, 22, 27 & 28 in order to reestablish same I go to the cor. to secs. 15, 16, 21 & 22 which I find standing and agreeing with field notes and run

S. on true line between secs. 21 & 22. Var. 14° 25' E.

 80 00 Set post 4 in. sq. 1 ft. in earth 1 ft. above earth mound $4\frac{1}{2}$ ft. in dia. at base by 2 ft. in height and dug pits 24 x 18 x 12 8 lks. distant at 4 angles for cor. to secs. 21, 22, 27 & 28.

 S. between secs. 27 & 28. Var. 14° 30' E.
 Thru valley.

22 00 Leave same and descend.
 40 00 Set post 4 in. dia. 1 ft. in earth, 1 ft. above earth mound 4 ft. in dia. at base by 2 ft. in height and dug pits 24 x 18 x 12 8 lks. E. for $\frac{1}{4}$ sec. cor.

80 00 Set post 4 in. sq. 1 ft. in earth 1 ft. above earth mound $4\frac{1}{2}$ ft. in dia. at base by 2 ft. in height and dug pits 24 x 18 x 12 8 lks. distant at 4 angles for corner to secs. 27, 28, 33 & 34. Land level in valley and mountainous elsewhere. Soil 1st & 2nd rate. Timber and undergrowth of oak and chaparral.
 East on a random line between secs. 27 & 34.

Var. 14° 30' E.
 Ascend.
 24 00 Top of spur bears NW. and SE. and descend.
 40 00 Set temporary $\frac{1}{4}$ sec. cor.
 80 20 Intersect N. and S. line 20 lks. N. of corner to secs. 26, 27, 34 & 35

From which corner I run

N. 89° 51' W. on true line between secs. 27 & 34.

Var. 14° 30' E.

40 10

Set post 4 in. dia. 1 ft. in earth 1 ft. above earth mound 4 ft. in dia. at base by 2 ft. in height and dug pits 24 x 18 x 12 8 lks. N. for $\frac{1}{4}$ sec. cor.

50 20

The cor. to secs. 27, 28, 33 & 34.

Land mountainous. Soil 1st & second rate.

Timber & undergrowth of oak chaparral and bunch grass.
