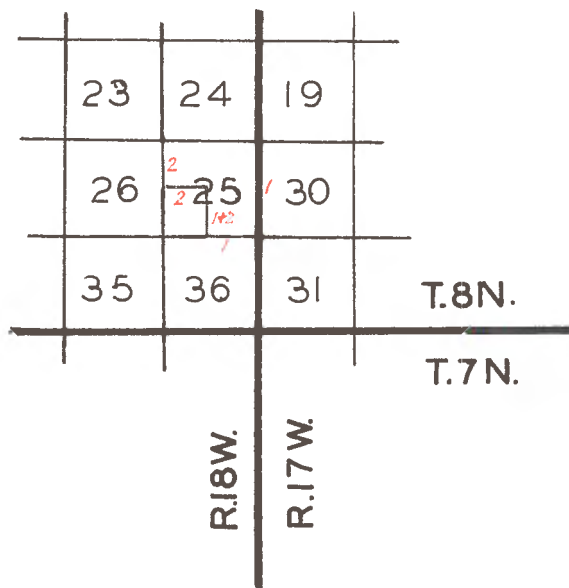


FIELD NOTES OF SURVEY OF  
SECTION 25, Township 8 North, Range 18 West, S.B.M.



— John Goldsworthy - 1873

March 26, 1873

South on range line along the east line of Section 25.

Var. 14° 30' E.

X X X X X X X X

80.00 To corner to sections 25, 30, 31 and 36.

Set a pitch pine post and charred stake in mound with pits as per instructions.

-----

West on true line between sections 25 and 36.

Var. 14° 30' E.

19.00 To ravine 150 links wide, course SW.

21.00 To summit of spur, course S.

26.00 To ravine, 1 chain wide, course SE.

32.00 To summit of spur, course S.

40.00 To  $\frac{1}{4}$  section corner between sections 25 and 36, set post and charred stake in mound with pits as per instructions from which

A white oak tree 8 inches diameter bears North, distant 4, 33-100 chains. I can proceed no farther, either west or south, on account of the steep and broken nature of the ground. 1st 19 chains, land rolling, 2nd rate; growth of clover and wild oats, good grazing. Last 21 chains, land quite broken; soil, 3rd rate, very little grass and a very scattering growth of scrub pine and live oak.

-----

North, through section 25.

Var. 14° 30' E.

4.33 To a white oak 8 inches in diameter on line.

5.00 To brow of bluff, sloping south, course N. 60° W. and S. 30° E.

15.50 To summit of ridge, course N. 33° W.

40.00 To the center of section 25, set post and charred stake

in mound with pits as per instructions, from which

A white oak tree 5 feet in diameter bears S. 52° E., distant 100 links.

Land, for the 1st 5 chains, broken, almost barren of grass, 3rd rate. A few scattering scrub pine and live oak trees. Land, for the last 35 chains, quite rolling, 2nd rate, growth of wild oats and clover.

-----

West on a true line through section 25.

Var. 14° 30' E.

20.00 To summit of spur, course NW.  
34.00 To summit of spur, course NW.  
40.00 To  $\frac{1}{4}$  section corner between sections 25 and 26, set post and charred stake in mound with pits as per instructions. Land, rolling, 2nd rate. I could not proceed south from this point, on account of the steep and broken nature of the mountain range.

-----

North on random line between sections 25 and 26.

Var. 14° 30' E.

11.50 To ravine, 1 chain wide, course N.E.  
25.10 To ravine, 2 chains wide, course N.E.  
40.07 To point 14 links west of old mound, corner to sections 23, 24, 25 and 26, post had decayed, hence I reestablished the same by setting a post and charred stake in old mound with pits, as per instructions.

South on true line between sections 25 and 26.

Bearing S. 0° 12' W.

40.07 To  $\frac{1}{4}$  section corner between sections 25 and 26. Land, very rolling; soil, 2nd rate.

-----

Survey made by John Goldsworthy,  
Deputy Surveyor, under contract  
of Jan. 13, 1873.