

Department of the Interior
Office of U.S. Surveyor-General.

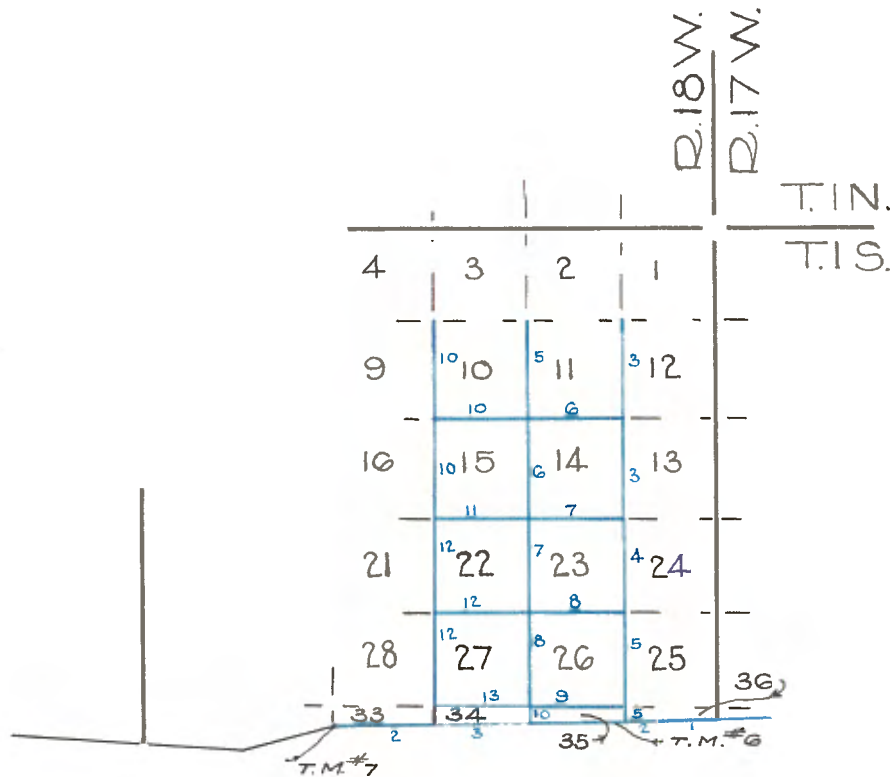
San Francisco, California
October 28, 1922

I John Plover, U.S. Surveyor-General for California, do hereby certify that the annexed transcript of the field notes of Sections 14, 15, 22, 23, 26, 27 and 35, Township 1 South, Range 18 West, San Bernardino Meridian California, is a true and literal exemplification of the same on file in this office.

In Witness Whereof, I have hereunto subscribed my name and caused the seal of this office to be affixed on the day and year above written

(Seal)

John Plover, United States Surveyor-General
for California.



Re-survey of Rancho Topango Malibu Sequit
Township 1 S, R 18 W., S.B.M.

- September 25, 1896: At 6h 45m a.m., local mean time, I set off $34^{\circ}02'N$ on the lat arc, $1^{\circ}9'S$ on the decl arc, and determine a true meridian with the Solar compass, at corner T.M.No.6 on the north boundary of Rancho Topango Malibu Sequit, which is a sycamore tree, 22 ins. diam. marked and witnessed as described by the Surveyor General and in Canada Los Americanos, 40 lks. wide, course south 500 feet below ridge. Thence I run
N $85^{\circ}45'E$ on a random line and at
- 107.50 I arrive at the closing corner to Townships 1 S.R.17 and 18 W., which is an oak post 4 ins. square, 12 ins. above ground, marked and witnessed as described by the Surveyor General, Thence I run
S $85^{\circ}45'W$ on a true line, descend
- 1.00 Cross gulch 8 lks. wide, course south and ascend
- 5.50 Top of ridge bears N. and S. + 150 feet above gulch and descend
- 8.00 Cross gulch 80 lks. wide, course south - 50 feet below ridge and ascend
- 15.00 Being 128.76 chs. S. $85^{\circ}45'W$ from corner T.M.No. 4, I set a sandstone $16 \times 12 \times 8$ ins., 11 ins. in the ground, marked $\frac{1}{2}$ M T M on side of stone facing ranch and raised a mound of stone 2 feet base, $1\frac{1}{2}$ feet high, in ranch at right angle to line.
Pits impracticable
- 31.50 Top of spur trends north + 60 feet above gulch and descend
- 43.26 Cross gulch 8 lks. wide, course south - 100 feet below ridge and ascend
- 45.00 Top of ridge, bears N. and S. + 100 feet above gulch and descend
- 46.04 Top of ridge, bears N.E. and S.W. and descend.
- 50.35 Cross gulch, 10 lks. wide, course S.E. and ascend
- 52.00 Top of ridge, bears N. and S. and descend
- 54.24 Cross gulch 8 lks. wide, with good spring, course south & ascend
- 55.00 Being 168.76 chs. S $85^{\circ}45'W$ from corner T M No. 4, I set a sandstone $16 \times 10 \times 12$ ins. 10 ins. in the ground, marked 2 M T M on side of post facing ranch and raised a mound of stone 2 feet base, $1\frac{1}{2}$ feet high in ranch, at right angles to line.
Pits impracticable
- 56.00 Cross wire fence, bears N. and S.
- 57.00 Top of ridge, bears N. and S. and descend
- 71.60 Cross gulch, 12 lks. wide, - 100 feet below ridge, course south and ascend
- 83.50 Top of ridge, bears N. and S. + 90 feet above gulch and descend
- 95.00 Being 208.76 chs. S $85^{\circ}45'W$ from corner T.M.No.9
I set a sandstone $18 \times 10 \times 8$ ins., 12 ins. in the ground, marked $\frac{1}{2}$ M T M on side post facing ranch, dug pits $24 \times 18 \times 12$ ins. on line 4 feet dist. and raised a mound of ~~stone~~ earth, 4 feet, 2 feet high, in ranch at right angle to line

Re-survey of Rancho Topanga Malibu Sequit
Township 1 Sm R 18 W. S.B.M.

98.50 Cross road, bears N. and S.
107.50 To corner T M No. 6
Land broken and mountainous
Soil 2d. and 3d rate
Timber oak
Dense undergrowth of oak and chaparral. September 25, 1896

Note: The line corners on this course were inadvertently marked respectively $\frac{3}{120}$ c $\frac{4}{160}$ and $\frac{5}{200}$ c.

September 26; At 6h 45m. a.m., l.m.t., I set off $34^{\circ}02'N.$ on the lat. arc; $1^{\circ}33' S.$ on the decl. arc; and determine a true meridian with the solar at corner T.M. No. 7

From corner T.M. No. 7, which is a sycamore tree 24 ins. diam. marked and witnessed as described by the Surveyor General in Escondido Canon, 30 lks. wide, course south and at foot of rocky precipice 400 feet high,

A fine stream of good water flowing from the point of rocks, south, Thence I run

$N 89^{\circ}15'E.$ on a random line, and at

217.70 I arrive at a point 30 lks. north of corner T M No. 6

Thence I run

$S 89^{\circ}20'W$ on a true line

Ascend steep mountain

28.50 Top of ridge bears N. and S 600 feet above canon, and descend

40.00 Set a sandstone $20 \times 12 \times 10$ ins., 15 ins. in the ground, marked $\frac{1}{2}$ M T M on side facing ranch and raised a mound of stone 2 feet base, $1\frac{1}{2}$ feet high, in ranch at right angle to line.

Pits impracticable.

46.65 Cross canon 20 lks. wide, course S.W. - 150 feet below ridge and ascend

60.50 Top of ridge, bears N. and S., + 200 feet above canon and descend

80.00 Set a sandstone $12 \times 10 \times 6$ ins., 8 ins. in the ground marked 1 M T M on side of stone facing Ranch and dug pits $24 \times 18 \times 12$ ins. on line, 4 feet dist. and raised a mound of ~~stone~~ earth, 4 feet base, 2 feet high, in ranch at right angle to line

95.00 Cross Del Sasto Canon 30 lks. wide, course - 400 feet below ridge and ascend S.W. Swinney's house, bears south 3.00 chs. dist.

120.00 Set a sandstone $20 \times 14 \times 6$ ins., 15 ins. in the ground marked $\frac{1}{2}$ M T M on side of stone facing ranch and raised a mound of stone, 2 feet base, $1\frac{1}{2}$ feet high, in ranch, at right angle to line

Pits impracticable.

Re-survey of Rancho Topanga Malibu Sequit
Township 1 S., R. 16 W., S.B.M.

- 125.60 Top of ridge, bears N.E. and SW. + 300 feet above canon and descend.
150.80 Cross gulch, 20 lks. wide, course S.W. - 150 feet below ridge and ascend.
156.26 Top of ridge bears N.E. and S.W. + 50 feet above gulch and descend.
160.00 Set a sandstone 16x14x6 ins., 10 ins. in the ground marked 2 M T M on side of stone facing ranch and raised a mound of stone, 2 feet base, 1½ feet high, in Ranch at right angle to line. Pits impracticable.
179.20 Cross canon 18 lks. wide, course S.E. - 150 feet below ridge and ascend
200.00 Set a sandstone 18x15x7 ins., 12 ins. in the ground marked ½ M T M on side of stone facing ranch and raised a mound of stone, 2 feet base, 1½ feet high in ranch at right angle line. Pits impracticable. Descend
217.70 To corner T M No. 7
Land broken and mountainous.
Soil 2d and 3d. rate. Timber oak.
Dense undergrowth of chaparral. September 26 and 28, 1896

Subdivisions of T 1 S., R. 18 W., S.B.M.

- S 0°01'E between sections 11 and 12.
x x x x x x x x
80.00 Set a sandstone 22x18x16 ins., 16 ins. in the ground for corner to sections 11, 12, 13, 14, marked with 4 notches on S. and 1 notch on E. edges; and raised a mound of stone, 2 feet base, 1½ feet high, W. of corner. Pits impracticable.
Land, precipitous, rocky and mountainous. Soil 3d. rate
Timber oak. Dense undergrowth, chaparral. September 22, 1896.
-
- S 0°01'E. between sections 13 and 14
Ascend steep ridge over rough and broken ground.
40.00 Set a sandstone 24x18x14 ins., 18 ins. in the ground for ¼ section corner marked ¼ on W. face; and raised a mound of stone, 2 feet base, 1½ feet high W. of corner.
Pits impracticable.
This ¼ section corner stands about 200 feet above corner to sections 11, 12, 13 and 14.
56.00 Summit of divide, bears E. and W. about 160 feet above ¼ section corner and descends along south slope.

Re-survey of Rancho Topanga Malibu Sequit
Township 1 S., R. 18 W., S.B.M.

Subdivisions of T 1 S., R. 18 W., S .B.M.

80.00 Set a sandstone ~~24x8x8~~ ins., 18 ins. in the ground for corner to sections 13, 14, 23 and 24, marked with 3 notches on S. and 1 notch on E. edges; and raised a mound of stone, 2 feet base, $1\frac{1}{2}$ feet high W. of corner
Pits impracticable.
This corner stands about 150 feet below summit of divide.
Land rough and mountainous. Soil 3d. rate.
Timber, oak . Dense undergrowth of same and chaparral.

x x x x x x x x x x

Thence I run

S 0°01'E. between sections 23 and 24

Descend.

9.00 Gulch, 6 lks. wide, course S 40°W 30 feet below corner and ascend
16.00 Top of spur, trends S 50°W 40 feet above gulch and descend
23.00 Gulch, 7 lks. wide, course S 30°W 75 feet below spur and ascend
32.00 Top of spur, trends S 35°W 150 feet above gulch and descend.
40.00 Set a sandstone 12x10x6 ins., 8 ins. in the ground for $\frac{1}{4}$ section corner marked $\frac{1}{4}$ on W. face and raised a mound of stone 2 feet base, $1\frac{1}{2}$ feet high W. of corner.
Pits impracticable.
This $\frac{1}{4}$ section corner is about 170 feet below spur.
41.50 Gulch, 6 lks. wide, course S 50°W and ascend
65.00 Top of spur trends S W 150 feet above gulch and descend
67.50 Gulch, 8 lks. wide, course S 70°W 45 feet below spur and ascend
78.00 Top of spur trends E 60 feet above gulch and descend
80.00 Set a sandstone 16x12x6 ins. 11 ins. in the ground for corner to sections 23, 24, 25 and 26, marked with 2 notches on S. and 1 notch on E. edges; and raised a mound of stone 2 feet base, $1\frac{1}{2}$ feet high W. of corner
Pits impracticable.
The corner is set on south slope of spur, trending east about 40 feet from top of spur.
Land rough and mountainous.
Soil 3d. rate
No timber
Dense undergrowth of oak and chaparral.

Subdivisions of T 1 S., R. 18 W., S. B. M.

S 0°01'E. between sections 25 and 26
Descend into chaparral.

- 1.00 Gulch, 5 lks. wide, course east and ascend
6.50 Top of ridge, 50 feet above gulch, bears E. and W. descend
22.00 Gulch, 10 lks. wide, 100 feet below gulch, course S. 20°W ascend
39.00 Top of ridge, 125 feet above gulch, bears E. and W. Descend
40.00 Set a sandstone 16x12x10 ins. 11 ins. in the ground for $\frac{1}{4}$ section corner, marked $\frac{1}{4}$ on W. face, and raised a mound of stone, 2 feet base $1\frac{1}{2}$ feet high W. of corner. Pits impracticable.
This $\frac{1}{4}$ section corner stands about 50 feet below top of ridge.
65.90 Gulch, 5 lks. wide, course west, 300 feet below top of ridge; ascend.
72.50 Top of ~~ridge~~ spur, 75 feet above gulch, bears S 40°W and N 40°E descend.
80.00 Set a sandstone 24x8x6 ins., 18 ins. in the ground for corner to sections 25, 26, 35 and 36, marked with 1 notch on S. and 1 notch on E. edges; raised a mound of stone, 2 feet base, $1\frac{1}{2}$ feet high W. of corner. Pits impracticable.
Land, mountainous and brushy. Soil 3d. rate,
Timber sycamore. Dense undergrowth of oak and chaparral.
September 24, 1896

S 0°01'E. between sections 35 and 36
Descend east slope of spur

- 10.75 Wire fence bears E. and W.
12.64 Intersect Rancho Topanga Sequit, at a point N 85° 48'E 25.93 chs. dist. from corner T M No. 6, which is a sycamore 22 ins. diam. marked and witnessed as described by the Surveyor General, and set a sandstone 20x16x6 ins., 14 ins. in the ground for closing corner to fractional sections 35 and 36, marked C.C. on N. with 1 ~~notch~~ groove on E.; dug pits 24x18x12 ins. S 85°48'W and N 85°48'E 4 feet distant and raised mound of earth 4 feet base 2 feet high, N 0°01'W. of corner.
Land rough and mountainous. Soil 3d. rate Timber sycamore
Dense undergrowth oak and chaparral. October 17, 1896

S 0°01'E. between sections 10 and 11
Ascend over precipitous rocks.

- 27.00 Top of ridge, 300 feet above corner to sections 2, 3, 10, 11, bears N.W. and S.E.
Descend over rough and broken ground
36.25 Creek 100 lks. wide, course E 400 feet below top of ridge and ascend
39.37 Set a sandstone 25x16x12 ins. 19 ins. in the ground for $\frac{1}{4}$ section corner marked $\frac{1}{4}$ on W. face, from which
A scrub oak 18 ins. diam. bears S 40°W 235 lks. dist. marked $\frac{1}{4}$ S B T

Subdivisions of T 1 S, R. 18 W. S. B. M.

- No other tree within limits, and raised a mound of stone 2 feet base, $1\frac{1}{2}$ feet high, W. of corner. Pits impracticable.
- 41.50 Thomas N. Menderhall's house, bears S 80°W 3.50 lks. dist.
John R. Grant's house bears S 85°E 965 lks. dist.
- 79.97 The point for section corner falls on a point of a ridge which point is a rock in place 8x6x4 feet above ground, on which I cut a cross (X) at the exact corner point, for corner to sections 10, 11, 14 and 15, marked with 4 grooves on S. and 2 grooves on E. sides; and raised a mound of stone 2 feet base, $1\frac{1}{2}$ feet high W. of corner. Pits impracticable.
Land mountainous and rough. Soil 3d. rate
Timber Oak. Undergrowth chaparral.
X X X X X X X X
-
- East on a random line between sections 11 and 14
- 40.00 Set temporary $\frac{1}{4}$ section corner
- 79.86 Intersect N. and S. line 22 lks. S. of corner to sections 11, 12, 13 & 14.
Thence I run
S 89°51'W. on a true line between sections 11 and 14. Descend
- 22.50 Gulch, 6 lks. wide, course N.W. 300 feet below section corner.
Over rolling ground.
- 34.65 Gulch 10 lks. wide, course N.W. Ascend.
- 39.93 Set a sandstone 20x12x8 ins., 15 ins. in the ground for $\frac{1}{4}$ section corner marked $\frac{1}{4}$ on N. face, dug pits 18x18x12 ins. E. and W. of stone, 3 feet dist. and raised a mound of earth, $3\frac{1}{2}$ feet base $1\frac{1}{2}$ feet high N. of corner.
- 50.00 Top of ridge, 250 feet above gulch, bears N. and S.
Descend.
- 75.00 Gulch, 10 lks. wide, course N.E. 250 feet below top of ridge, ascend
- 79.86 The corner to sections 10, 11, 14 and 15.
Land rough and mountainous. Soil 3d. rate.
Timber, oak. Undergrowth oak and chaparral. October 19, 1896
-
- X X X X X X X X X
- S 0°01'E. between sections 14 and 15.
Descend.
- 3.10 Gulch, 8 lks. wide, course N.E.
Ascend steep mountain over rough and rolling ground.
- 40.00 Set a sandstone 24x16x8 ins. 18 ins. in the ground for $\frac{1}{4}$ section corner marked $\frac{1}{4}$ on W. face, and raised a mound of stone, 2 feet base, $1\frac{1}{2}$ feet high, W. of corner. Pits impracticable.
- 40.50 Summit of divide, bears S 60°E and N X 60°W. and descend
- 62.50 Gulch, 600 feet below summit of divide, course S. 45°E. ascend.

Subdivisions of T 1 S, R. 18 W., S. B. M.

- 74.00 Top of spur, 100 feet above gulch, bears S 40°E. and N 40°W.
Descend
- 80.00 Set a sandstone 30x20x6 ins. 22 ins. in the ground for corner to sections 14, 15, 22 and 23, marked with 3 notches on S. and 2 notches on E. edges; dug pits 18x18x12 ins. in each section, 5½ feet dist. and raised a mound of earth, 4 feet base, 2 feet high W. of corner
Land mountainous. Soil 3d. rate. Timber oak.
Dense undergrowth same and chaparral.
-
- E. on a random line between sections 14 and 23
- 40.00 Set temporary ¼ section corner.
- 80.22 Intersect N. and S. line, 16 lks. N. of corner to sections 13, 14, 23 & 24
Thence I run
N 89°53'W. on a true line between sections 14 and 23. Descend
- 6.94 Gulch, 10 lks. wide, course S 10°W. Ascend
- 15.50 Top of high spur, 125 feet above gulch, bears S 12°W and N 12°E
Descend
- 28.89 Gulch, 10 lks. wide, course south 200 feet below spur; ascend
- 40.11 Set a sandstone 18x14x9 ins., 12 ins. in the ground for ¼ section corner marked ¼ on N. face; dug pits 18x18x12 ins. E. and W. of stone, 3 feet dist. and raised a mound of earth, 3½ feet base 1½ feet high N. of corner.
This ¼ section corner stands 150 feet above gulch.
- 49.00 Top of spur, 70 feet above ¼ section corner bears N. and S.
Descend
- 62.04 Gulch, 8 lks. wide, course south, 80 feet below top of spur, ascend
- 69.30 Top of ridge, 90 feet above gulch, bears N. and S. descend
- 74.50 Gulch, 6 lks. wide, course S 10°E 150 feet below ridge; ascend
- 80.22 The corner to sections 14, 15, 22 and 23.
Land rough and mountainous. Soil 3d. rate. Timber, oak.
Dense undergrowth same and chaparral. October 20, 1896.

X X X X X X X X X X

Thence I run

S 0°01'E. between sections 22 and 23

- 1.00 Gulch, 8 lks. wide, course S 60°E ascend.
- 4.00 Top of ~~gulch~~ spur, 75 feet above gulch, bears S 60°E and N 60°W
Ascend
- 8.06 Gulch, 7 lks. wide, course S 20°E 50 feet below top of spur, ascend
- 12.00 Top of rocky spur, 80 feet above gulch, bears E. and W. Descend
- 30.10 Canon, 20 lks. wide, course S 80°E 150 feet below top of spur.
Ascend steep slope.
- 39.00 Top of spur, 175 feet above canon, bears E. and W. and descend

Subdivisions of T 1 S., R. 18 W., S.B.M.

40.00 Set a sandstone 30x10x4 ins., 22 ins. in the ground, for $\frac{1}{4}$ section corner marked $\frac{1}{4}$ on W. face, from which
 A live oak, 20 ins. diam. bears N $77\frac{1}{4}^{\circ}$ W. 180 lks. distant marked $\frac{1}{4}$ S B T
 A live oak 24 ins. diam. bears S 9° E 190 lks. dist. marked $\frac{1}{4}$ S.B.T.
 This corner stands 30 feet below top of spur

45.50 Gulch, 8 lks. wide, course east about 75 feet below $\frac{1}{4}$ section corner
 Enter timber of oak, ascend

54.50 Top of spur, 150 feet above gulch, bears S 85° E. and 85° W. descend

60.00 Gulch, 8 lks. wide, course east 125 feet below top of spur; ascend

80.00 Set a sandstone 30x8x4 feet 22 ins. in the ground for corner to sections 22, 23, 26 and 27, marked with 2 notches on S. and E. edges; dug pits 18x18x12 ins. in each section, $5\frac{1}{2}$ feet dist. and raised a mound of earth, 4 feet base, 2 feet high W. of corner.
 Land ^{rough &} mountainous. Soil 3d. rate. Timber oak.
 Dense undergrowth of chaparral.

E. on a random line between sections 23 and 26.

40.00 Set temporary $\frac{1}{4}$ section corner

80.36 Intersect N. and S. line 34 lks. N. of corner to sections 23, 24, 25 and 26. Thence I run
 S $89^{\circ}45'$ W. on a true line between sections 23 and 26
 Descend

13.00 Gulch, 8 lks. wide, course S 20° W

26.00 Canon del Carrol, 18 lks. wide, course south, ascend

40.18 Set a sandstone 18x5x5 ins. 12 ins. in the ground for $\frac{1}{4}$ section corner marked $\frac{1}{4}$ on N. face dug pits 18x18x12 ins. E. and W. of stone 3 feet dist. and raised a mound of earth, $3\frac{1}{2}$ feet base $1\frac{1}{2}$ feet high, N. of corner.

44.10 Top of spur, 75 feet above $\frac{1}{4}$ section corner bears N. and S.
 Descend.

48.08 Gulch, 8 lks. wide, course S 40° E 150 feet below top of spur, ascend.

60.00 Top of high bank and ascend.

75.00 Top of spur, 300 feet above gulch, bears N 10° E and S 10° W. descend

80.36 The corner to sections 22, 23, 26 and 27
 The corner is about 15 feet below top of spur
 Land mountainous and broken. Soil 3d. rate.
 Timber sycamore. Dense undergrowth of oak and chaparral.
 October 21, 1896

Thence I run
 S $0^{\circ}01'$ E. between sections 26 and 27
 Gulch 10 lks. wide, course S 60° E 200 feet below

13.00

Subdivisions of T 1 S., R. 18 W., S.B.M.

- corner to sections 22, 23, 26 and 27, ascend
- 32.00 Top of ridge, 100 feet above gulch, bears S 10°E and N 10°W and descend.
- 36.00 Gulch, 8 lks. wide, course N 80°E 100 feet below top of ridge Ascend.
- 40.00 Set a sandstone 30x12x5 ins., 22 ins. in the ground for $\frac{1}{4}$ section corner marked $\frac{1}{4}$ on W. face and raised a mound of stone, 2 feet base $1\frac{1}{2}$ feet high W. of corner. Pits impracticable. This $\frac{1}{4}$ section corner stands 75 feet above gulch
- 60.00 High point on east slope of ridge, 50 feet above $\frac{1}{4}$ sections corner, descend.
- 80.00 Set a sandstone 20x8x5 ins. 15 ins. in the ground, for corner to sections 26, 27, 22 and 23 marked with 1 notch on S. and 2 notches on E. edges; dug pits 18x18x12 ins. in each section, $5\frac{1}{2}$ feet dist. and raised a mound of earth, 4 feet base, 2 feet high W. of corner. This corner stands 200 feet below top of ridge. Land rough and mountainous. Soil 3d. rate. Timber sycamore Dense undergrowth of oak and chaparral.
-
- East on a random line between sections 26 and 35
- 40.00 Set temporary $\frac{1}{4}$ section corner
- 80.24 Intersect N. and S. line 28 lks. N. of corner to sections 25, 26, 35 and 36 Thence I run N 89°48'W. on a true line between sections 26 and 35 Ascend.
- 3.50 Top of spur, 50 feet above corner to sections 25, 26, 35 and 36, bears S 20°E and N 20°W. Descend
- 19.50 Cross road to Prichard's house, bears N. and S.
- 21.40 Canon, 20 lks. wide, course S 10°W about 300 feet below top of spur. Ascend
- 40.12 Set a sandstone 20x12x12 ins. 15 ins. in the ground for $\frac{1}{4}$ section corner marked $\frac{1}{4}$ on N. face; and raised a mound of stone, 2 feet base, $1\frac{1}{2}$ feet high. Pits impracticable. This $\frac{1}{4}$ section corner stands on east side of spur, 200 feet ~~below~~ above canon.
- 50.00 Top of ridge 150 feet above $\frac{1}{4}$ section corner bears N. and S. Descend.
- 65.80 Canon del Carrol, 20 lks. wide, course south, 150 feet below top of ridge. Ascend.
- 78.50 Top of spur, 90 feet above canon bears S 40°W and N 40°E. Descend.
- 80.24 The corner to sections 26, 27, 34 and 35. Land rough and mountainous. Soil 3d. rate. Timber oak. Undergrowth chaparral.

Subdivisions of T 1 S., R. 18 W., S. B. M.

- S 0°01'E. between sections 34 and 35
 Ascend west slope.
- 2.00 Gulch, 6 lks. wide, course S 15°E 40 feet below corner to sections 25, 26, 35 and 36, descend
- 15.18 Intersect Rancho Topanga Malibu Sequit S 89°20'W 14.30 chs. dist. from corner $\frac{1}{4}$ M T M which is a sandstone 20x10 5 ins. above ground, marked and witnessed as described by the Surveyor General, and set a sandstone 14x12x8 ins. 9 ins. in the ground, for closing corner to fractional sections 34 and 35, marked C. C. on N. and 2 grooves on E. face and raised a mound of stone 2 feet base, 1 $\frac{1}{2}$ feet high, N 0°01'W. of corner. Pits impracticable.
 This closing corner stands 75 feet below corner to sections 25, 26, 34 and 35.
 Land rough and mountainous. Soil 2d. and 3d. rate.
 Timber oak. Undergrowth, chaparral. October 22, 1896.
-
- X X X X X X X X
 S 0°02'E. between sections 9 and 10
 X X X X X X X X
- 80.00 Set a sandstone 30x10x4 ins., 22 ins. in the ground for corner to sections 9, 10, 15 and 16, marked with 4 notches on S. and 3 notches on E. edges; dug pits 18x18x12 ins. in each section, 5 $\frac{1}{2}$ feet dist. and raised a mound of earth, 4 feet base, 2 feet high W. of corner.
 Land, rough and mountainous. Soil 3d. rate. Timber, oak.
 Undergrowth same and chaparral.
-
- 40.00 E. on a random line between sections 10 and 15
 Set temporary $\frac{1}{4}$ section corner
- 80.28 Intersect N. and S. line 30 lks. N. of corner to sections 10, 11, 14 and 15. Thence I run
 N 89°47'W. on a true line between sections 10 and 15.
 Ascend.
- 19.00 Top of spur, bears N.E. and S.W. descend
- 38.36 Head of gulch, course North. Ascend N.E. slope
- 40.14 Set a sandstone 18x16x12 ins. 12 ins. in the ground for $\frac{1}{4}$ section corner, marked $\frac{1}{4}$ on N. face and raised a mound of stone, 2 feet base, 1 $\frac{1}{2}$ feet high N. of corner. Pits impracticable.
- 80.28 The corner to sections 9, 10, 15 and 16
 Land mountainous. Soil 3d. rate.
 Timber, oak. Undergrowth chaparral. October 24, 1896
-
- X X X X X X X X
 Thence I run
 S 0°02' E. between sections 15 and 16
 Ascend.

Subdivisions of T 1 S. R. 18 W., S. B. M.

- 2.50 Top of divide, bears E. and W.
Descend over rough and broken ground
- 38.14 Gulch, 8 lks. wide, course S. E. ascend.
- 40.00 Set a sandstone 24x18x10 ins., 18 ins. in the ground for $\frac{1}{4}$ section corner, marked $\frac{1}{4}$ on W. face, and raised a mound of stone, 2 feet base, $1\frac{1}{2}$ feet high W. of corner.
Pits impracticable.
This $\frac{1}{4}$ section corner stands 300 feet below top of divide.
Descend.
- 61.00 Canon, 12 lks. wide, course S 30°E 175 feet below $\frac{1}{4}$ section corner, ascend.
- 78.70 Top of spur, 200 feet above canon, bears S 80°W and N 80°E
descend
- 80.00 Set a sandstone 20x10x8 ins., 15 ins. in the ground, for corner to sections 15, 16, 21 and 22, marked with 3 notches of the S. and 3 notches on E. edges; dug pits 18x18x12 ins. in each section $5\frac{1}{2}$ feet dist. and raised a mound of earth, 4 feet base 2 feet high W. of corner.
Land mountainous. Soil 3d. rate. Timber, oak.
Undergrowth same and chaparral.
-
- E. on a random line between sections 15 and 22
- 40.00 Set temporary $\frac{1}{4}$ section corner
- 80.05 Intersect N. and S. line 13 lks. S. of corner to sections 14, 15, 22 and 23. Thence I run
S 89°54'W. on a true line between sections 15 and 22.
Descend.
- 1.00 Gulch, 5 lks. wide, course S. E. ascend.
- 5.50 Top of spur, bears N. W. and S. E. Descend.
- 8.00 Gulch, 5 lks. wide, course S. E. Ascend.
- 26.07 Top of ridge, bears N. and S. descend.
- 38.00 Gulch, 6 lks. wide, course south, ascend
- 40.03 Set a sandstone 20x16x14 ins. 15 ins. in the ground, for $\frac{1}{4}$ section corner, marked $\frac{1}{4}$ on N. face; dug pits 18x18x12 ins. E. and W. of stone, 3 feet dist. and raised a mound of stone, $3\frac{1}{2}$ feet base, $1\frac{1}{2}$ feet high, N. of corner
- 46.00 Top of spur, 50 feet above $\frac{1}{4}$ section corner bears N. and S.
descend.
- 54.20 Gulch, 10 lks. wide, course S 60°E 60 feet below top of ~~XXXXXX~~ spur; ascend.
- 73.50 Top of ridge, 125 feet above gulch, bears N. W. and S. E. descend
- 80.05 The corner to sections 15, 16, 21 and 22
Land mountainous. Soil 3d. rate. Timber, oak.
Undergrowth same and dense chaparral.
-

Subdivisions of T 1 S., R. 18 W., S. B. M.

S 0°02'E. between sections 21 and 22
Descend.

- 14.52 Canon 20 lks. wide, course S. E. Ascend.
21.00 Top of spur, 50 feet above canon, bears E. and W.; descend
40.00 Set a sandstone 20x12x8 ins., 15 ins. in the ground for $\frac{1}{4}$ section corner marked $\frac{1}{4}$ on W. face; from which
A live oak 18 ins. diam. bears N 43°E 52 lks. dist. marked $\frac{1}{4}$ S B T
A live oak 10 ins. diam. bears S 24 $\frac{1}{2}$ °E 54 lks. dist. marked $\frac{1}{4}$ S B T
50.00 Along dry arroyo, ascend eas^t slope of hill
77.00 Top of high spur, 200 feet above $\frac{1}{4}$ section corner, bears E. and W. Descend.
80.00 Set a sandstone 20x12x8 ins., 15 ins. in the ground for corner to sections 21, 22, 27 and 28, marked with 2 notches on S. and 3 on E. edges; and raised a mound of stone, 2 feet base, 1 $\frac{1}{2}$ feet high W. of corner. Pits impracticable.
Land mountainous. Soil 2d. and 3d. rate.
Timber oak. Undergrowth chaparral.

East on a random line between sections 22 and 27.

- 40.00 Set temporary $\frac{1}{4}$ section corner
79.88 Intersect N. and S. line 20 lks. south of corner to sections 22, 23, 26 and 27; Thence I run
S 89°51'W. on a true line between sections 22 and 27
Ascend
19.50 Top of ridge, bears N. and S. Descend
30.00 Gulch, 10 lks. wide, course S 20°W 175 feet below gulch, ascend.
39.94 Set a sandstone 16x6x12 ins., 11 ins. in the ground for $\frac{1}{4}$ section corner marked $\frac{1}{4}$ on N. face; and raised a mound of stone, 2 feet base, 1 $\frac{1}{2}$ feet high N. of corner. Pits impracticable.
45.50 Top of spur, 100 ft. above gulch, bears S 50°E 50°W. Descend
50.00 Cross low sag, ascend
55.50 Top of edge 50 feet above spur, bears N. and S. descend
62.50 Canon, 30 lks. wide, course S 20°E 175 feet below top of ridge, ascend.
79.88 The corner to sections 21, 22, 27 and 28.
This corner is about 200 feet above canon
Land mountainous. Soil 3d. rate. Timber Oak.
Undergrowth same and chaparral. October 26, 1896.

X X X X X X X

Thence I run

- 28.00 S 0°02'E. between sections 27 and 28. Descend.
Canon, 15 lks. wide, course S 15°E 200 feet below corner to sections 21, 22, 27 and 28, ascend